

Study Definitions

Inclusion Criteria:

- Any adult >18 years-old who presented to the emergency department or urgent care with suspected SARS-CoV-2-related illness and underwent investigation via a nasal PCR.
- In other words, any PUI with symptoms suspicious enough for COVID-19 to warrant a nasal RT-PCR.
- Note: The CDC no longer has criteria for who should get tested and leaves it to individual provider discretion.

Exclusion Criteria:

- Persons <18 years of age
- Persons who did not receive a lung ultrasound during the time period of the composite primary outcome (currently defined as 28 days from initial triage).

Counting Findings:

- Count the rib space with the most amount of B-lines in a given zone.
- ANY rib space with subpleural consolidations, effusions, or pleural thickening in a given zone should be accounted for, regardless if that was the zone with the most B-lines.

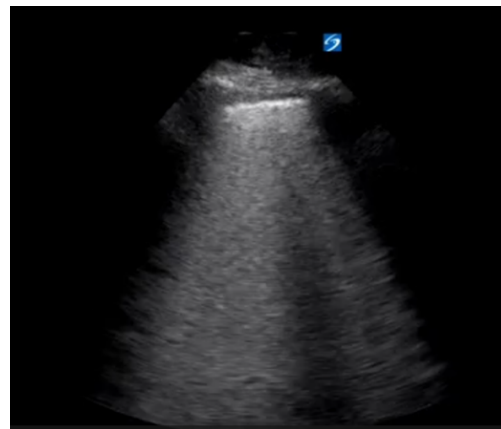
B-Line Definition: Vertically oriented lines that fulfill the following criteria: (1) extend from the pleural surface to the maximum depth of the image (at least 13-16cm) and (2) move in conjunction with lung sliding, and (3) erases A-lines as it moves over them.

***Note: B-lines must come from the pleural line. In instances of a subpleural consolidation, the underlying lung may appear brighter, but this does not represent a B-line

Confluent B-Lines: B-lines with a width of >50% rib space that emanate from multiple points from the pleural line. In the example below, the left image is not confluent (B-lines come from one point); the right image is confluent (the B-lines come from multiple points, merge, and take up >50% of the space).



Not confluent



Confluent

Pleural Thickening: Defined as $>0.3\text{mm}$, with irregularity to the pleural line. This finding can co-occur with subpleural consolidations or B-lines. (Reuss J: Sonography of the pleura. Ultraschall Med 2010; 31: pp. 8-22)

Normal pleural line



Thick pleural line

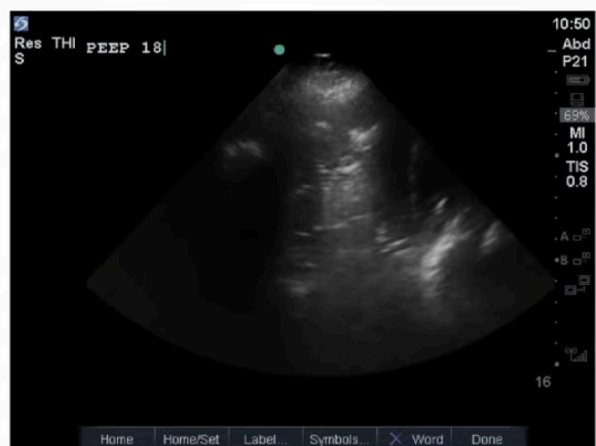


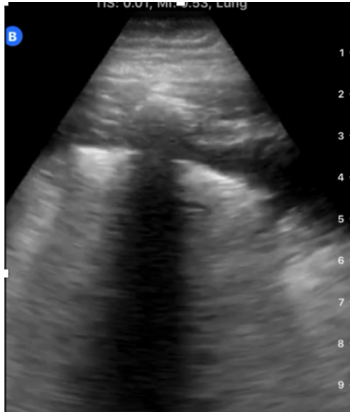
Consolidation: There are two types of consolidation specified in this study: subpleural and translobar. A subpleural consolidation is characterized by a broken/highly irregular pleural line and associated increased echogenicity below the consolidation. A translobar consolidation is characterized by a dense (sometimes called “hepaticized”) lung that appears more solid. This can be a more qualitative assessment.

Sub-pleural



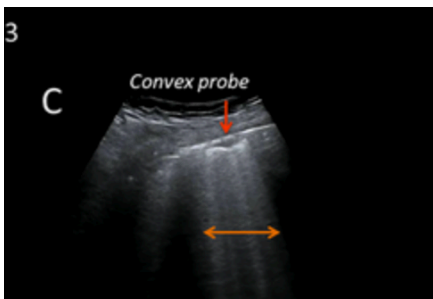
Translobar





***Note: B-lines must come from the pleural line. In instances of a subpleural consolidation, the underlying lung may appear brighter, but this does not represent a confluent B-line. Here is an example above.

*Some consolidations may have an associated pleural effusion, as shown here.



Here is another example of a sub-pleural consolidation. The increased echogenicity below the consolidation would NOT be counted as B-lines

Sources:

<https://www.atsjournals.org/doi/full/10.1513/AnnalsATS.201308-288OT#.VxJzDhMrKb8>

<https://onlinelibrary.wiley.com/doi/full/10.1002/jum.15285>

Reuss J: Sonography of the pleura. *Ultraschall Med* 2010; 31: pp. 8-22

<https://onlinelibrary.wiley.com/doi/full/10.1002/jum.15285>