

Supplementary material

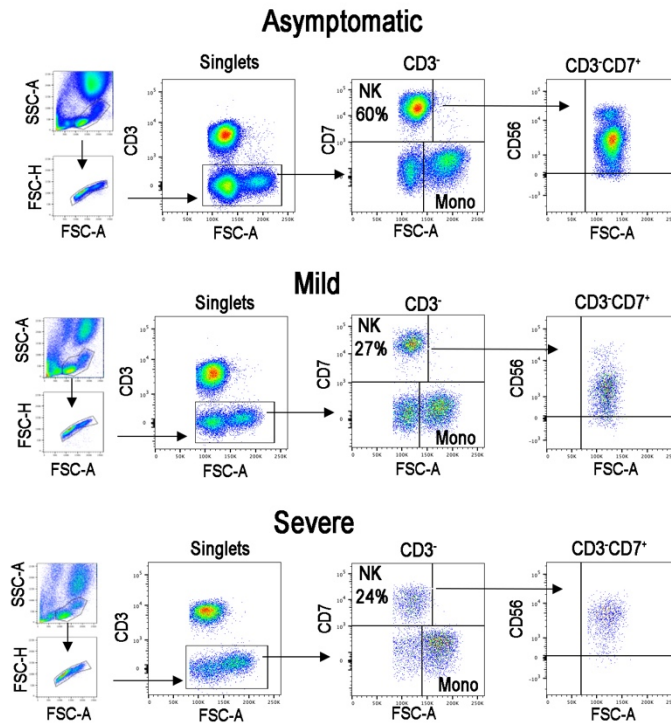


Figure S1

Figure S1: The lymphomonocyte gate was designed based on physical characteristics (FSC-A vs SSC-A). Singlets are identified by FSC-H vs FSC-A parameters. Gating strategy for the analysis of NK cells ($CD3^-CD7^+FSC-A^{low}$) and monocytes ($CD3^-CD7^-FSC-A^{high}$). NK cells identified as $CD7^+$ in the $CD3^-$ gate also express $CD56^+$.

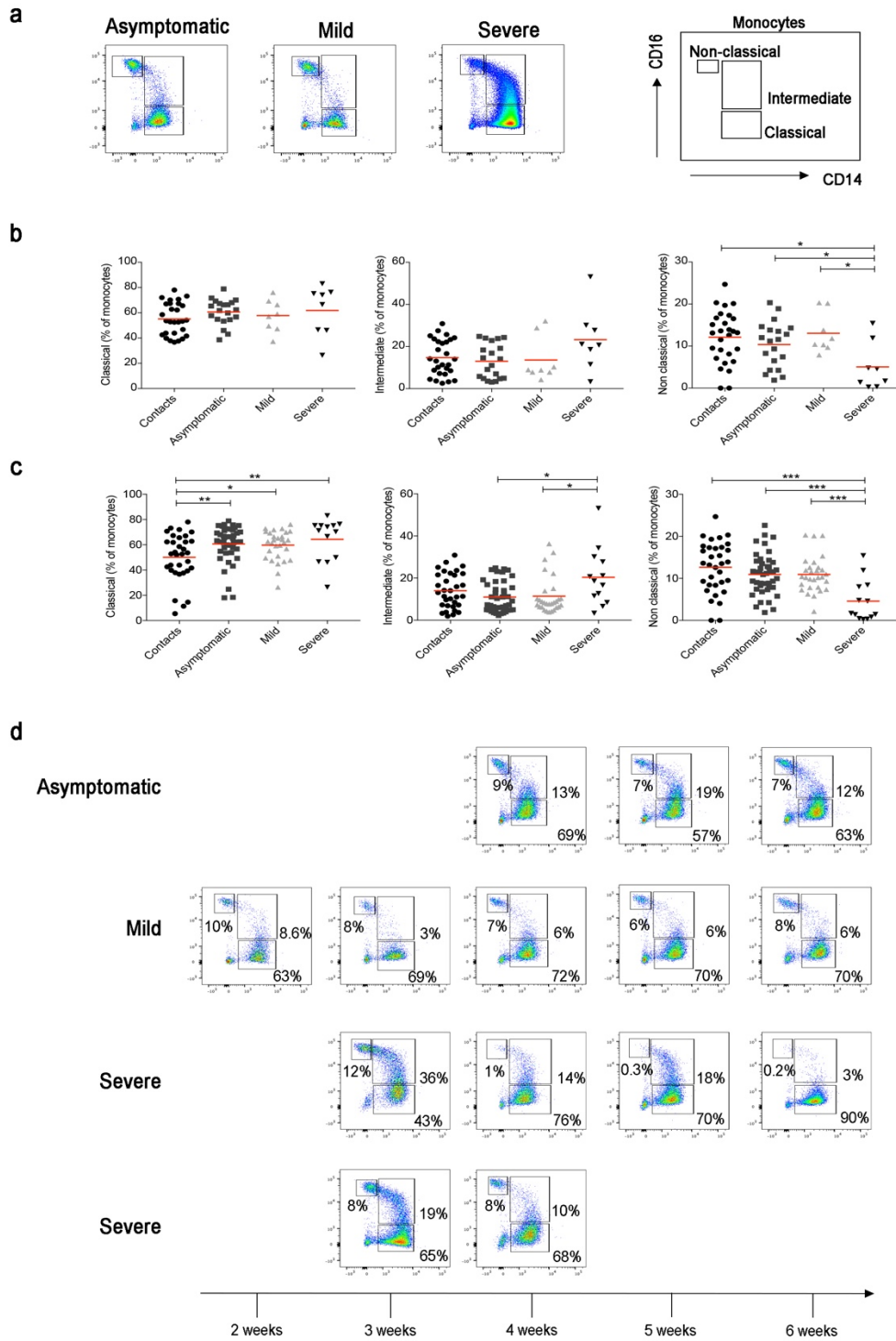


Figure S2

Figure S2: (a) Flow-cytometry analysis of monocytes in the blood of three representative patients with asymptomatic, mild and severe disease. Monocytes were gated as CD3-FSC-A^{high}. Monocytes were divided as follow: classical (CD14⁺⁺CD16⁻), intermediate (CD14⁺CD16⁺) and non-classical (CD14⁺CD16⁺⁺). (b-c) Scatter plots indicate the percentage of classical, intermediate and non-classical monocytes in each group of patients reported as single value (b) or as collective data (c). Midlines indicate mean. Statistical significances were determined using unpaired, two-tailed Mann-Whitney *U*-tests. **p*≤0.05, ***p*<0.01, ****p*<0.001. (d) FACS plots show the different distribution of monocytes populations in four representative patients (one asymptomatic, one mild and two severe) during the course of the disease (2-6 weeks).

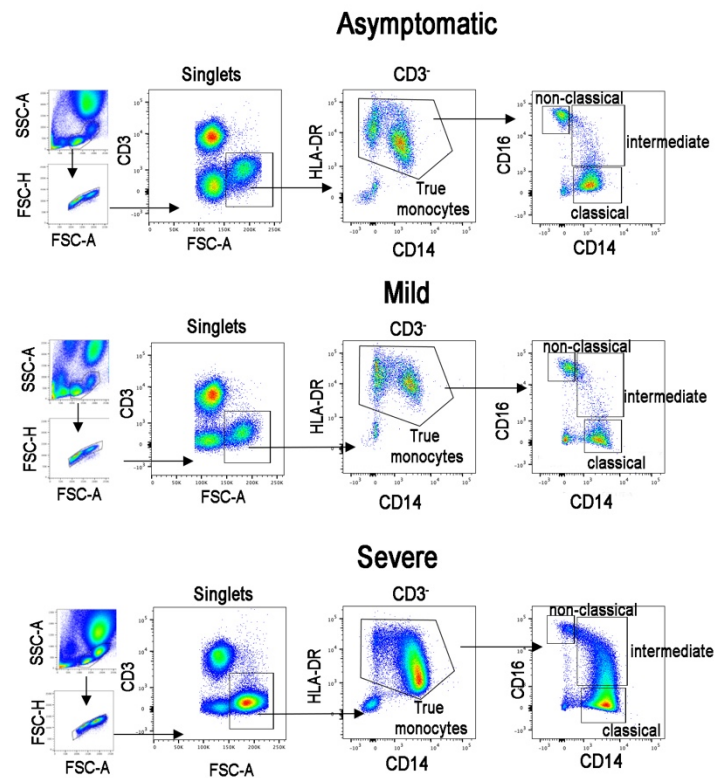


Figure S3

Figure S3: FACS plot show the gating strategy for the identification of monocytes (CD3⁺FSC-A^{high}). True monocytes are double positive for HLA-DR and CD14. In the true monocytes gate, we identified the classical (CD14⁺⁺CD16⁻), intermediate (CD14⁺CD16⁺) and non-classical (CD14⁺CD16⁻) populations.

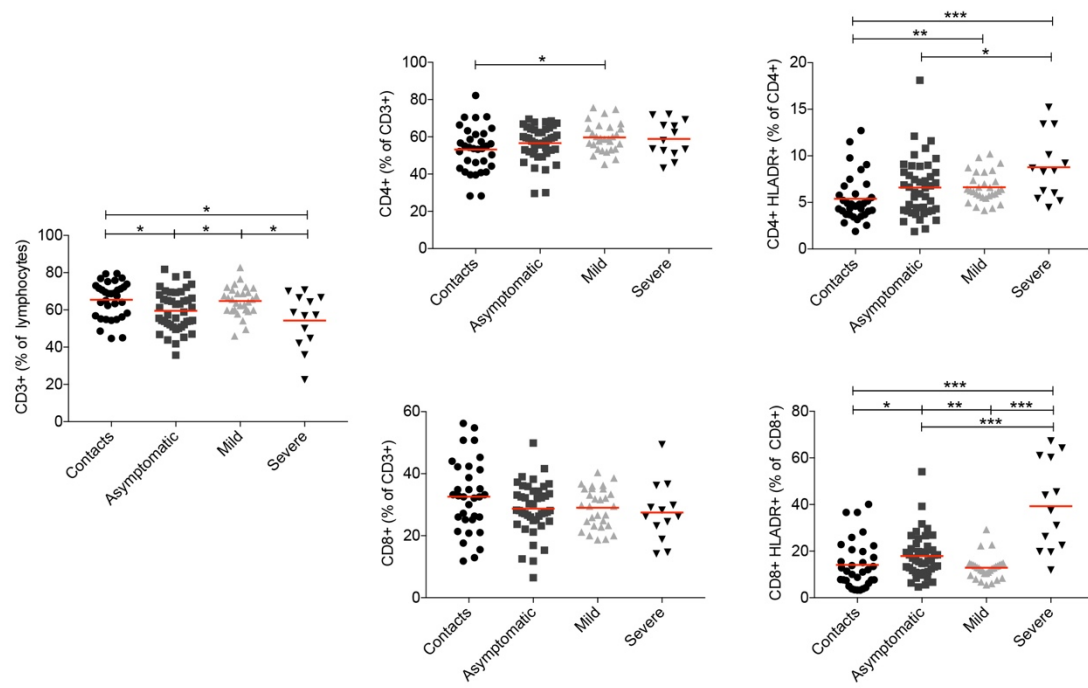


Figure S4

Figure S4: Scatter plots show percentage of T cells ($CD3^+$), $CD4^+$, $CD4^+HLA-DR^+$, $CD8^+$ and $CD8^+HLA-DR^+$ T cells in all sample analyzed in the study. Midlines indicate mean. Statistical significances were determined using unpaired, two-tailed Mann-Whitney U -tests. * $p < 0.05$, ** $p < 0.01$, *** $p < 0.001$.

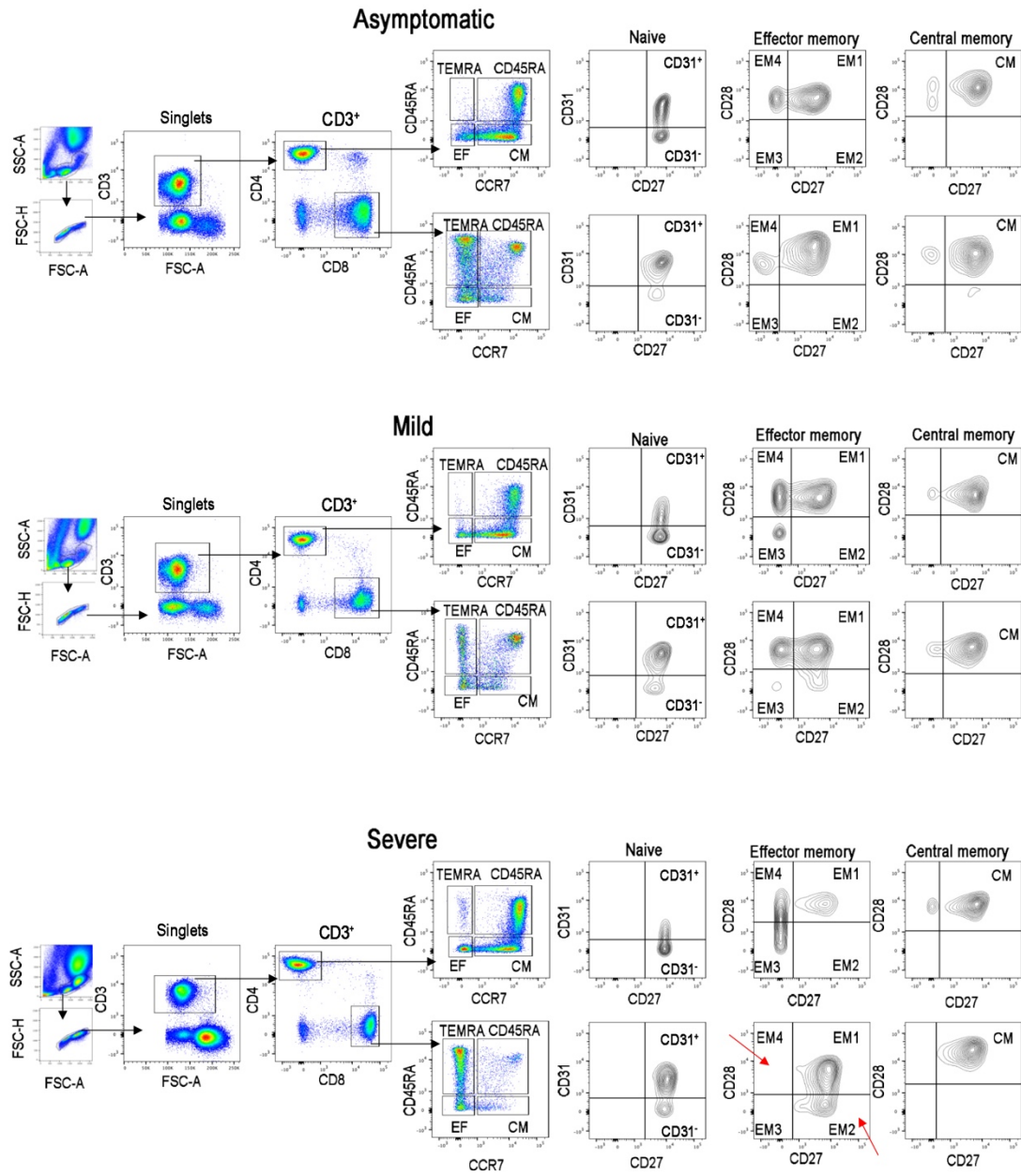


Figure S5

Figure S5: The CD8⁺ and CD4⁺T cells were subdivided into the main T cell subsets using CD45RA and CCR7: naïve (CD45RA⁺CCR7⁺), central memory (CM CD45RA⁻CCR7⁺), effector memory (EM CD45RA⁻CCR7⁻) and TEMRA (CD45RA⁺CCR7⁻) T cells. Naïve T cells were further divided based on CD31 expression (CD31⁺ and CD31⁻). CM and EM were separated based on the expression of CD27 and CD28.

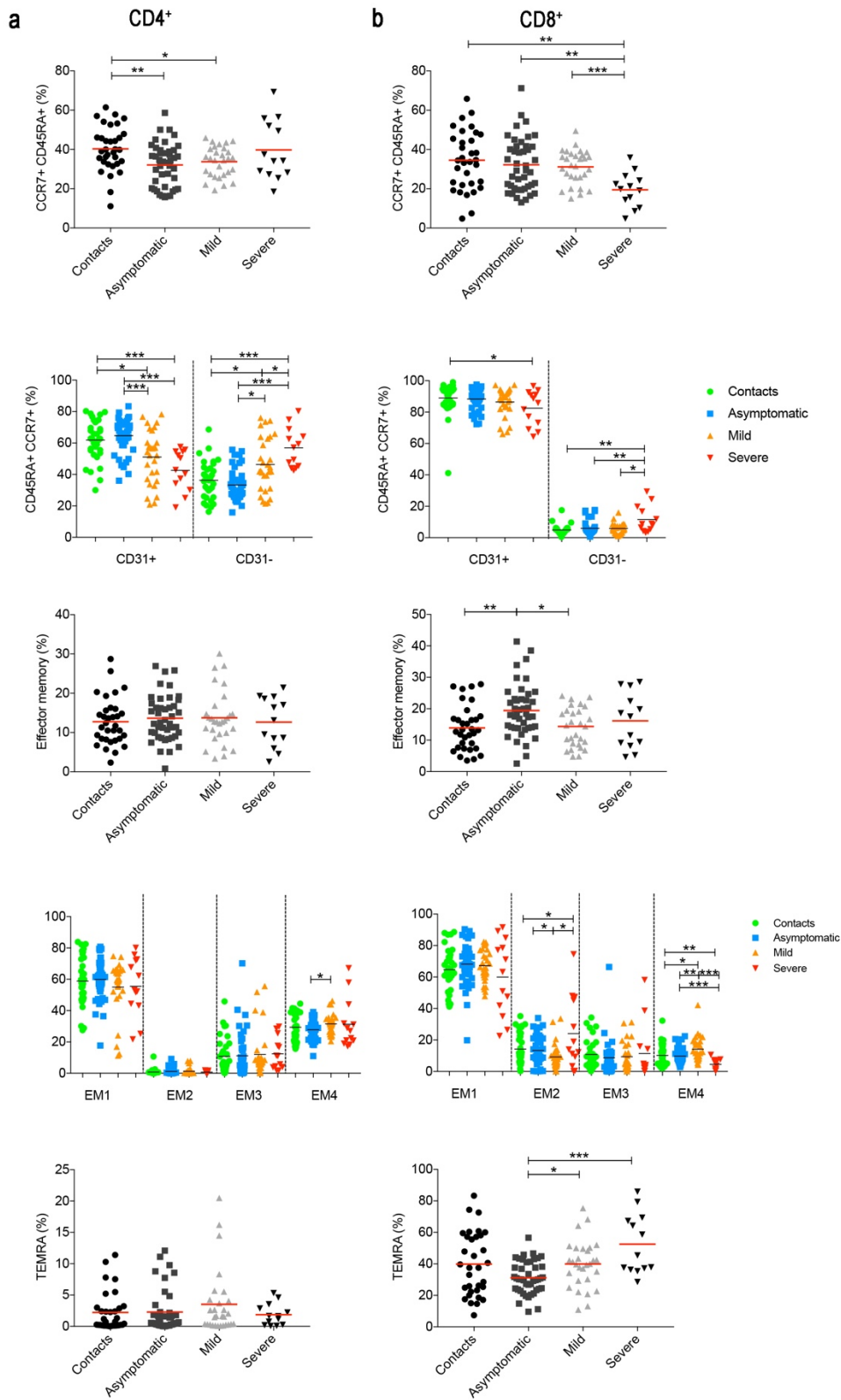


Figure S6

Figure S6: (a-b) We separately show the results obtained by the analysis of cumulative data from all samples of CD4⁺ (Plots a) and CD8⁺ T cells (Plots b). Graphs show the percentage of naive T cells (CD3⁺CCR7⁺CD45RA⁺) that either expressed or lack CD31 (CD31⁺ and CD31⁻). Effector memory T cells (CD3⁺CCR7⁻CD45RA⁻) can be separated in EM1, EM2, EM3 and EM4. TEMRA T cells are CD3⁺CCR7⁻CD45RA⁺. Midlines indicate mean. Statistical significances were determined using unpaired, two-tailed Mann-Whitney *U*-tests. **p*≤0.05, ***p*<0.01, ****p*<0.001.

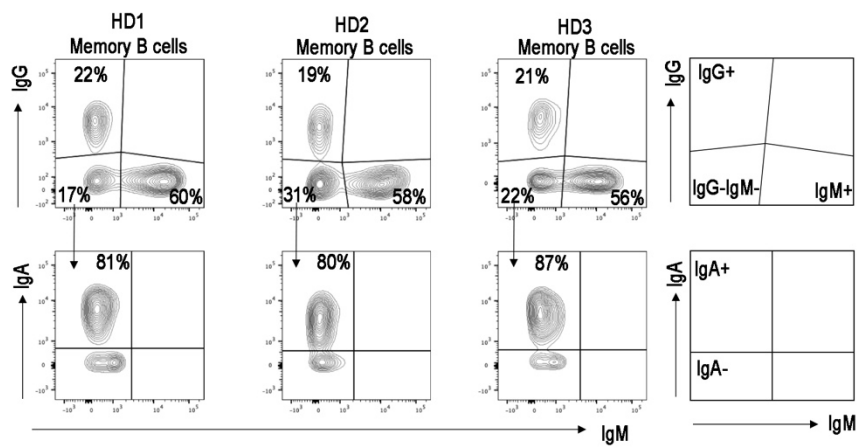


Figure S7

Figure S7: FACS plot in three healthy donors indicates that most of IgG⁺IgM⁻ MBCs correspond to IgA expressing memory B and minimal part of these cells are IgA⁻IgG⁺IgM⁻ MBCs.

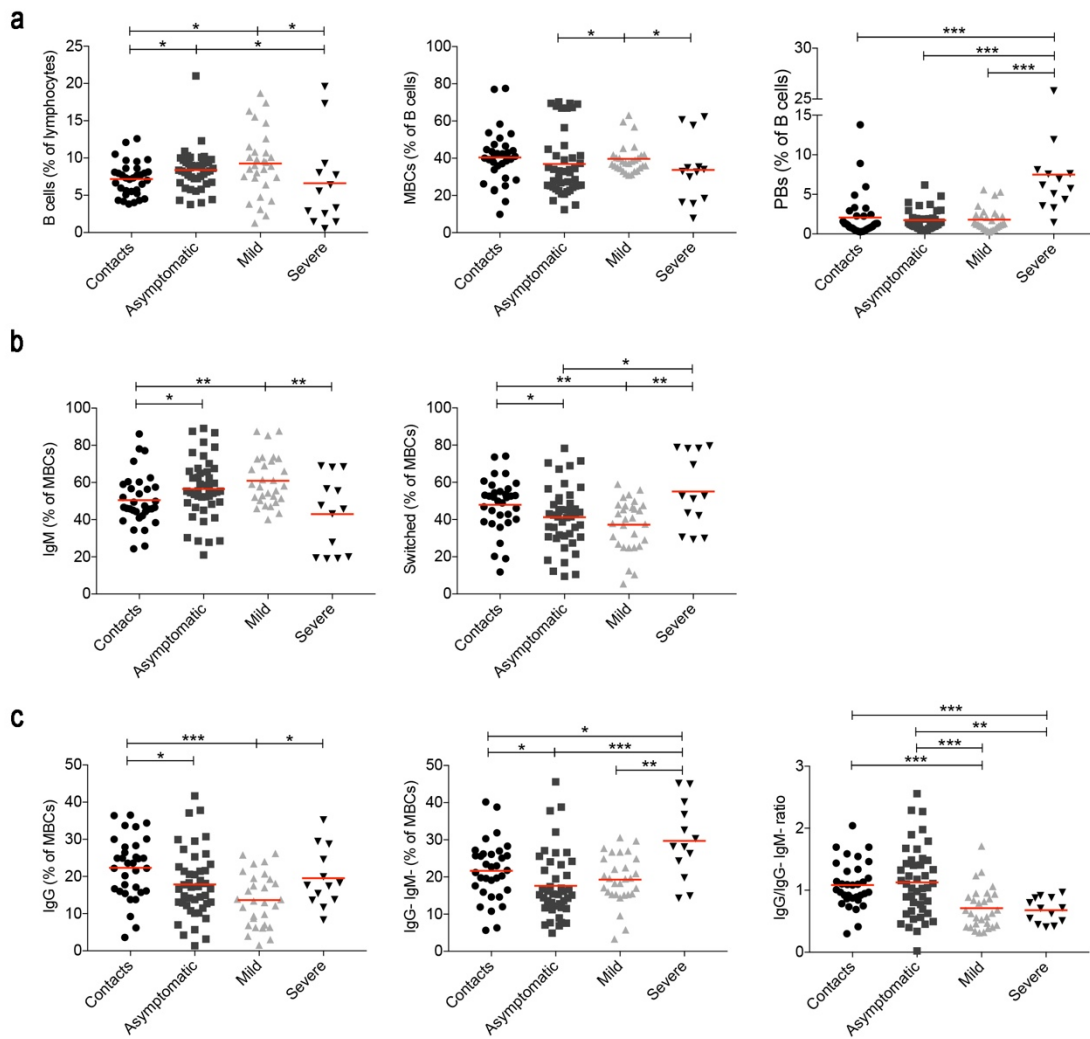


Figure S8

Figure S8:(a) Plots indicates the percentage of B cells, MBCs and plasmablasts. In b we show the frequencies of IgM and switched MBCs. In c we show the frequency of IgG⁺, IgG⁻IgM⁻MBCs. The ratio between IgG⁺ and IgG⁻IgM⁻ is also shown. Midlines indicate mean. Statistical significances were determined using unpaired, two-tailed Mann-Whitney *U*-tests. * $p \leq 0.05$, ** $p < 0.01$, *** $p < 0.001$.

Supplementary Table 1: Characteristics of the study population

Study Group	COVID-19 severe	COVID-19 mild	SARS-Cov-2 asymptomatic	SARS-Cov-2 contacts
number of patients	8	8	20	28
age, mean \pm SD (range)	65 \pm 20.1 (30-90)	55.2 \pm 7.2 (48-64)	40.4 \pm 10.9 (27-64)	40.8 \pm 10.9 (27-68)
sex (M/F)	6/2	5/3	4/16	8/20

Supplementary Table 2: Antibody panel

	Antibodies	Source	Identifier
T cell panel	CD45RA (Clone HI100) FITC	BD Biosciences	555488
	CCR7 (Clone CD197) PE	BD Pharmingen	566741
	CD3 (Clone SK7) PerCP	BD Biosciences	345766
	CD4 (Clone RPA-T4) PE-Cy7	Immunological Sciences	MAB-19522PC7
	CD27 (Clone M-T271) APC	BD Pharmingen	558664
	CD8 (Clone SK1) APC-Cy7	BD Biosciences	348793
	CD28 (Clone CD28.2) BV421	BD Horizon	562613
	CD31 (Clone WM59) BV605	BD Horizon	562855
B cell panel	CD45 (Clone 2D1) V500	BD Biosciences B-cell tube	626220
	CD19 (Clone SJ25C1) PE-Cy7		
	CD24 (Clone ML5) PE		
	CD27 (Clone L128) APC		
	CD38 (Clone HIT2) PercP-Cy5.5		
	IgM (Clone G20-127) FITC		
	IgG (Clone G18-145) APC-H7		
	IgD (Clone IA6-2) V450		
	CD21 (Clone B-ly4) BV605	BD OptiBuild	740395
Monocyte panel	CD45 (Clone 2D1) V500	BD Biosciences	655873
	CD3 (Clone UCHT1) BV605	BD OptiBuild	742623
	CD14 (Clone M5E2) PE	BD Pharmingen	555398
	CD16 (Clone LNK16) FITC	Immunological Sciences	MAB-1810F
	CD4 (Clone RPA-T4) PE-Cy7	Immunological Sciences	MAB-19522PC7
	CD8 (Clone SK1) APC-H7	BD Biosciences	641400
	CD38 (Clone HIT2) PerCP	Immunological Sciences	MAB-938PCP
	HLA-DR (Clone L243) V450	BD Biosciences	655874
	CD33 (Clone P67.6) APC	BD Biosciences	345800
NK cell panel	CD45 (Clone 2D1) V500	BD Biosciences	655873
	CD3 (Clone SK7) PerCP	BD Biosciences	345766
	CD4 (Clone RPA-T4) PE-Cy7	Immunological Sciences	MAB-19522PC7

Supplementary Table 3: Monocytes mean values

Patients group	Contacts	Asymptomatic	Mild	Severe
	mean \pm SD	mean \pm SD	mean \pm SD	mean \pm SD
Monocytes (% of lymphocytes)	13.1 \pm 6.1	13.3 \pm 5.8	17.5 \pm 6.2	37.1 \pm 19.2
Classical (% monocytes)	55.1 \pm 12.8	60.6 \pm 10.2	57.8 \pm 12.8	61.8 \pm 19.8
Intermediate (% monocytes)	14.8 \pm 8.5	13 \pm 8.2	13.6 \pm 10.6	23.3 \pm 14.8
Non Classical (% monocytes)	12.1 \pm 6.2	10.4 \pm 5.4	13.1 \pm 4.8	5 \pm 5.7

Supplementary Table 4: Monocytes total mean values

Patients group	Contacts	Asymptomatic	Mild	Severe
	mean \pm SD	mean \pm SD	mean \pm SD	mean \pm SD
Monocytes (% of lymphocytes)	12.8 \pm 6.1	14.6 \pm 6.6	14.4 \pm 5.3	29.2 \pm 18
Classical (% monocytes)	54.3 \pm 14.3	63.4 \pm 9.5	59.7 \pm 11.8	64.3 \pm 16.6
Intermediate (% monocytes)	14 \pm 8.2	11 \pm 7.2	11.5 \pm 8.7	20.4 \pm 13.5
Non Classical (% monocytes)	11.7 \pm 6.3	10.7 \pm 5	10.9 \pm 4.2	4.6 \pm 4.9

Supplementary Table 5: NK cells mean values

Patients group	Contacts	Asymptomatic	Mild	Severe
	mean \pm SD	mean \pm SD	mean \pm SD	mean \pm SD
NK (% of CD3-)	38.9 \pm 14.2	38.8 \pm 10.7	29 \pm 9.3	14.6 \pm 13.1
Monocytes (% of CD3-)	30.3 \pm 9.9	28.5 \pm 8.5	39.5 \pm 8.5	62.3 \pm 20.1
Monocytes/NK ratio	0.9 \pm 0.6	0.8 \pm 0.4	1.5 \pm 0.6	10.6 \pm 10.3
Monocytes/Lymphocytes ratio	0.2 \pm 0.09	0.2 \pm 0.08	0.2 \pm 0.1	0.8 \pm 0.8

Supplementary Table 6: NK cells total mean values

Patients group	Contacts	Asymptomatic	Mild	Severe
	mean \pm SD	mean \pm SD	mean \pm SD	mean \pm SD
NK (% of CD3-)	38.3 \pm 13.5	41 \pm 10.5	29.3 \pm 11.1	17.5 \pm 12.7
Monocytes (% of CD3-)	30.7 \pm 9.3	29.3 \pm 8.2	34.7 \pm 10.8	55.4 \pm 18.6
Monocytes/NK ratio	1 \pm 0.5	0.8 \pm 0.4	1.4 \pm 0.9	7.5 \pm 8.9
Monocytes/Lymphocytes ratio	0.1 \pm 0.08	0.2 \pm 0.09	0.2 \pm 0.08	0.6 \pm 0.6

Supplementary Table 7: T cells mean values

Patients group	Contacts	Asymptomatic	Mild	Severe
	mean \pm SD	mean \pm SD	mean \pm SD	mean \pm SD
CD3+ (% of lymphocytes)	70 \pm 8.3	67.2 \pm 8.1	69.2 \pm 7.9	55.4 \pm 16.1
CD4+ (% of CD3+)	60 \pm 11.7	62.3 \pm 7.8	64.4 \pm 8.8	66.4 \pm 10.9
CD4+ HLADR (% of CD4+)	5.3 \pm 2.4	6.9 \pm 3.9	7.1 \pm 1.8	9.5 \pm 3.4
CD4+ central memory (% of CD4+)	42.7 \pm 7.5	46.9 \pm 8.9	50.3 \pm 5.4	42.7 \pm 12.3
CD4+ effector memory (% of CD4+)	13.4 \pm 6.2	14.2 \pm 6.5	11.7 \pm 4.1	13.3 \pm 6.1
CD4+ effector memory 1 (% of CD4+ effector memory)	61.4 \pm 14.5	59 \pm 13.4	55.7 \pm 14.8	54.6 \pm 16.3
CD4+ effector memory 2 (% of CD4+ effector memory)	0.9 \pm 2	2.1 \pm 2.4	0.5 \pm 0.6	0.5 \pm 0.5
CD4+ effector memory 3 (% of CD4+ effector memory)	9.1 \pm 9.5	11.7 \pm 16.8	10.7 \pm 12.9	14.4 \pm 10.7
CD4+ effector memory 4 (% of CD4+ effector memory)	28.7 \pm 9	27.2 \pm 6.3	33.1 \pm 6.3	30.5 \pm 14.2
CCR7+ CD45RA+ (% of CD4+)	39.3 \pm 11.3	34.2 \pm 10.6	31.9 \pm 6.6	39.3 \pm 16.7
CCR7+ CD45RA+ CD31- (% of CD4+ naive)	35.7 \pm 12.6	34.9 \pm 10.3	48.1 \pm 17.1	57.3 \pm 14.5
CCR7+ CD45RA+ CD31+ (% of CD4+ CCR7+ CD45RA+)	62.9 \pm 13.1	63 \pm 11.4	46.6 \pm 14.6	42.4 \pm 14.5
CD4+ TEMRA (% of CD4+)	1.7 \pm 2.4	2 \pm 3.5	2.7 \pm 3.1	1.7 \pm 1.8
CD8+ (% of CD3+)	31.6 \pm 10.3	28.9 \pm 7.2	28.9 \pm 6.6	27.8 \pm 9.3
CD8+ HLADR (% of CD8+)	14 \pm 9.8	19.5 \pm 12.1	14.3 \pm 5.9	45.1 \pm 17.5
CD8+ central memory (% of CD8+)	7.7 \pm 4.7	10.8 \pm 5.2	11.8 \pm 6.2	7.5 \pm 5.1
CD8+ effector memory (% of CD8+)	14.7 \pm 7.1	19.6 \pm 8.7	13.7 \pm 6.2	17.5 \pm 10.1
CD8+ effector memory 1 (% of CD8+ effector memory)	67 \pm 13.7	62.8 \pm 14.8	66.2 \pm 11.4	56.7 \pm 21.6
CD8+ effector memory 2 (% of CD8+ effector memory)	13.2 \pm 8.8	15.8 \pm 10.1	11.2 \pm 9.9	34.6 \pm 23.5
CD8+ effector memory 3 (% of CD8+ effector memory)	10.1 \pm 9.4	12.2 \pm 14.1	9.2 \pm 7.3	5.9 \pm 5.8
CD8+ effector memory 4 (% of CD8+ effector memory)	9.7 \pm 5.8	9.2 \pm 5.1	13.4 \pm 5.8	2.7 \pm 2.6
CCR7+ CD45RA+ (% of CD8+)	35.8 \pm 15.5	35.3 \pm 14.7	29.9 \pm 8.4	16.8 \pm 8.5
CCR7+ CD45RA+ CD31- (% of CD8+ CCR7+ CD45RA+)	5.3 \pm 3.2	5.8 \pm 4.4	6.6 \pm 2.8	12.4 \pm 9.1
CCR7+ CD45RA+ CD31+ (% of CD8+ CCR7+ CD45RA+)	90.4 \pm 5.6	89.2 \pm 6.3	79.2 \pm 10.5	85.3 \pm 9
CD8+ TEMRA (% of CD8+)	37.5 \pm 20.2	29.7 \pm 12.3	40 \pm 14.3	55.2 \pm 22.7

Supplementary Table 8: T cells total mean values

Patients group	Contacts	Asymptomatic	Mild	Severe
	mean \pm SD	mean \pm SD	mean \pm SD	mean \pm SD
CD3+ (% of lymphocytes)	70.4 \pm 8	64.8 \pm 8.6	72.4 \pm 6.5	61.7 \pm 15.4
CD4+ (% of CD3+)	57.8 \pm 12.1	62.1 \pm 6.8	63.8 \pm 7.6	64.7 \pm 9.6
CD4+ HLADR (% of CD4+)	5.4 \pm 2.5	6.6 \pm 3.1	6.6 \pm 1.6	8.8 \pm 3.5
CD4+ central memory (% of CD4+)	41.8 \pm 8.4	49 \pm 8.6	45.9 \pm 7.4	42.7 \pm 10.4
CD4+ effector memory (% of CD4+)	12.7 \pm 6	13.7 \pm 5.8	13.8 \pm 6.8	12.7 \pm 6.4
CD4+ effector memory 1 (% of CD4+ effector memory)	58.9 \pm 15.5	59.9 \pm 12.7	55.1 \pm 17.2	55.6 \pm 18.6
CD4+ effector memory 2 (% of CD4+ effector memory)	0.8 \pm 1.9	1.2 \pm 1.9	1.3 \pm 2.2	0.7 \pm 0.7
CD4+ effector memory 3 (% of CD4+ effector memory)	10.9 \pm 11.5	11.2 \pm 14.2	12.1 \pm 14.9	12.5 \pm 10.2
CD4+ effector memory 4 (% of CD4+ effector memory)	29.4 \pm 8.9	27.8 \pm 5.7	31.6 \pm 6.2	31.3 \pm 15.8
CCR7+ CD45RA+ (% of CD4+)	40.3 \pm 11.4	32.1 \pm 10.9	33.7 \pm 7.7	39.8 \pm 15.2
CCR7+ CD45RA+ CD31- (% of CD4+ naive)	36.3 \pm 12	33.3 \pm 9.9	46.3 \pm 17	56.9 \pm 12.6
CCR7+ CD45RA+ CD31+ (% of CD4+ CCR7+ CD45RA+)	61.9 \pm 13	64.7 \pm 10.9	51.1 \pm 17	42.6 \pm 12.8
CD4+ TEMRA (% of CD4+)	2.2 \pm 3.1	2.3 \pm 3.3	3.5 \pm 5.2	1.9 \pm 1.7
CD8+ (% of CD3+)	33.3 \pm 10.5	29.3 \pm 5.6	29.3 \pm 6.1	28.6 \pm 7.4
CD8+ HLADR (% of CD8+)	14.1 \pm 10.2	17.9 \pm 9.5	12.9 \pm 5	39.3 \pm 19.2
CD8+ central memory (% of CD8+)	7.4 \pm 4.5	12.2 \pm 5.6	10.2 \pm 5.2	7.4 \pm 4.5
CD8+ effector memory (% of CD8+)	13.9 \pm 7.1	19.5 \pm 8.4	14.3 \pm 6.2	16.2 \pm 8.7
CD8+ effector memory 1 (% of CD8+ effector memory)	64.8 \pm 13.9	68.2 \pm 13.4	67.3 \pm 10.4	60 \pm 24.1
CD8+ effector memory 2 (% of CD8+ effector memory)	14.2 \pm 10.1	13.3 \pm 9.5	9.2 \pm 8.2	24.1 \pm 23
CD8+ effector memory 3 (% of CD8+ effector memory)	10.8 \pm 9.3	8.7 \pm 10.5	9.4 \pm 8.9	11.4 \pm 17.6
CD8+ effector memory 4 (% of CD8+ effector memory)	10.2 \pm 7	9.8 \pm 4.6	14.2 \pm 7.9	4.6 \pm 3.3
CCR7+ CD45RA+ (% of CD8+)	34.5 \pm 14.9	32.2 \pm 13.5	31.2 \pm 8.6	19.5 \pm 8.8
CCR7+ CD45RA+ CD31- (% of CD8+ CCR7+ CD45RA+)	4.9 \pm 3.1	5.9 \pm 4.3	5.9 \pm 3.3	11.6 \pm 8.4
CCR7+ CD45RA+ CD31+ (% of CD8+ CCR7+ CD45RA+)	89.1 \pm 10.2	88.4 \pm 6.7	86.4 \pm 8.9	82.5 \pm 11.1
CD8+ TEMRA (% of CD8+)	39.9 \pm 20.1	31.2 \pm 10.4	39.9 \pm 15.1	52.6 \pm 19.1

Supplementary Table 9: B cells mean values

Patients group	Contacts	Asymptomatic	Mild	Severe
	mean \pm SD	mean \pm SD	mean \pm SD	mean \pm SD
B cells (% of lymphocytes)	7.2 \pm 2.3	8.4 \pm 3.7	9.1 \pm 4.4	5.6 \pm 6.3
B transitional (% of B cells)	4.6 \pm 2.6	5.7 \pm 3.2	4.8 \pm 2.7	3.2 \pm 2.5
Naive B cells (% of B cells)	52.3 \pm 16.8	55 \pm 17.2	54.1 \pm 12.3	52.4 \pm 25.1
Memory B cells (% of B cells)	40.7 \pm 15.4	38.7 \pm 16.4	39.8 \pm 10.2	32.4 \pm 19.6
Atypical memory B cells (% of B cells)	3.1 \pm 2.1	2.7 \pm 2	3.2 \pm 4.4	4.5 \pm 4.2
Plasmablasts (% of B cells)	2.1 \pm 3	1.9 \pm 1.3	1.8 \pm 1.5	8 \pm 7.9
IgM memory B cells (% of memory B cells)	49.8 \pm 14.8	54.1 \pm 17.3	61.1 \pm 14	37.7 \pm 19
Switched memory B cells (% of memory B cells)	48.7 \pm 15.2	43.5 \pm 17.7	37.3 \pm 14.3	60 \pm 18.9
IgG memory B cells (% of memory B cells)	22.7 \pm 8.9	16.7 \pm 10.1	12.9 \pm 6	19.9 \pm 6.8
IgG- IgM- memory B cells (% of memory B cells)	21.8 \pm 8.2	21.9 \pm 14	20 \pm 6.3	32.3 \pm 10.2
Ratio IgG/IgG- IgM-	1.1 \pm 0.4	0.9 \pm 0.5	0.6 \pm 0.2	0.6 \pm 0.2

Supplementary Table 10: B cells total mean values

Patients group	Contacts	Asymptomatic	Mild	Severe
	mean \pm SD	mean \pm SD	mean \pm SD	mean \pm SD
B cells (% of lymphocytes)	7.2 \pm 2.3	8.4 \pm 2.7	9.3 \pm 4.4	6.6 \pm 6
B transitional (% of B cells)	4.6 \pm 2.6	6.8 \pm 3.5	5 \pm 2.3	3.3 \pm 2.1
Naive B cells (% of B cells)	52.8 \pm 15.6	56.7 \pm 18	54.3 \pm 10.4	52.4 \pm 21.8
Memory B cells (% of B cells)	40.4 \pm 14.3	36.9 \pm 17.3	39.6 \pm 8	33.7 \pm 17.5
Atypical memory B cells (% of B cells)	3.1 \pm 2	2.1 \pm 1.6	2.7 \pm 3.3	3.9 \pm 3.6
Plasmablasts (% of B cells)	2.1 \pm 2.8	1.7 \pm 1.2	1.8 \pm 1.4	7.5 \pm 6.1
IgM memory B cells (% of memory B cells)	50.5 \pm 13.9	56.5 \pm 16.1	60.9 \pm 13.2	43 \pm 20
Switched memory B cells (% of memory B cells)	47.9 \pm 14.3	41.2 \pm 16.3	37.2 \pm 13.7	55.1 \pm 19.7
IgG memory B cells (% of memory B cells)	22.3 \pm 8.3	17.9 \pm 9.1	13.7 \pm 7.1	19.5 \pm 7.8
IgG- IgM- memory B cells (% of memory B cells)	21.7 \pm 8	18.7 \pm 11.6	19.3 \pm 6.6	29.7 \pm 10.2
Ratio IgG/IgG- IgM-	1.1 \pm 0.4	1.1 \pm 0.6	0.7 \pm 0.3	0.7 \pm 0.2