

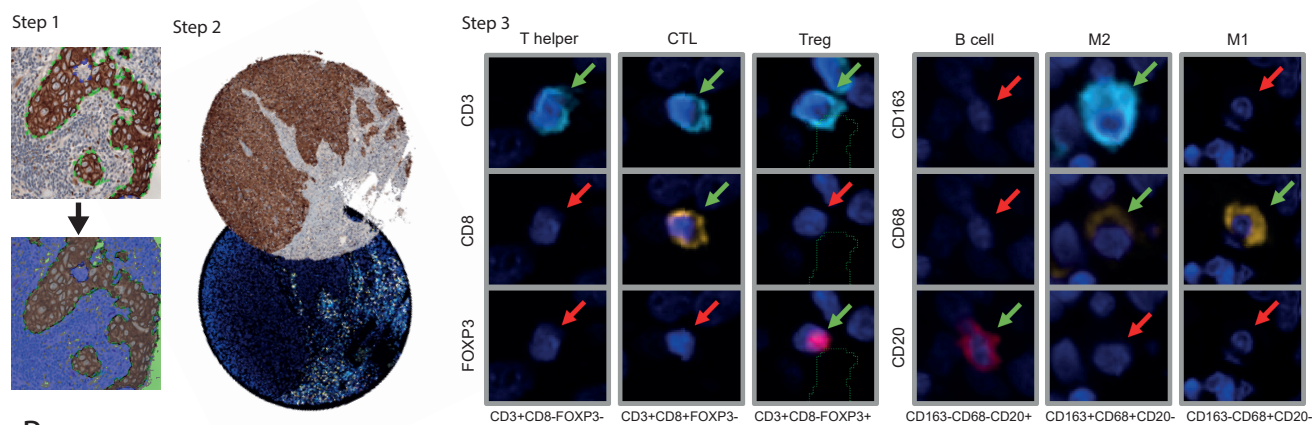
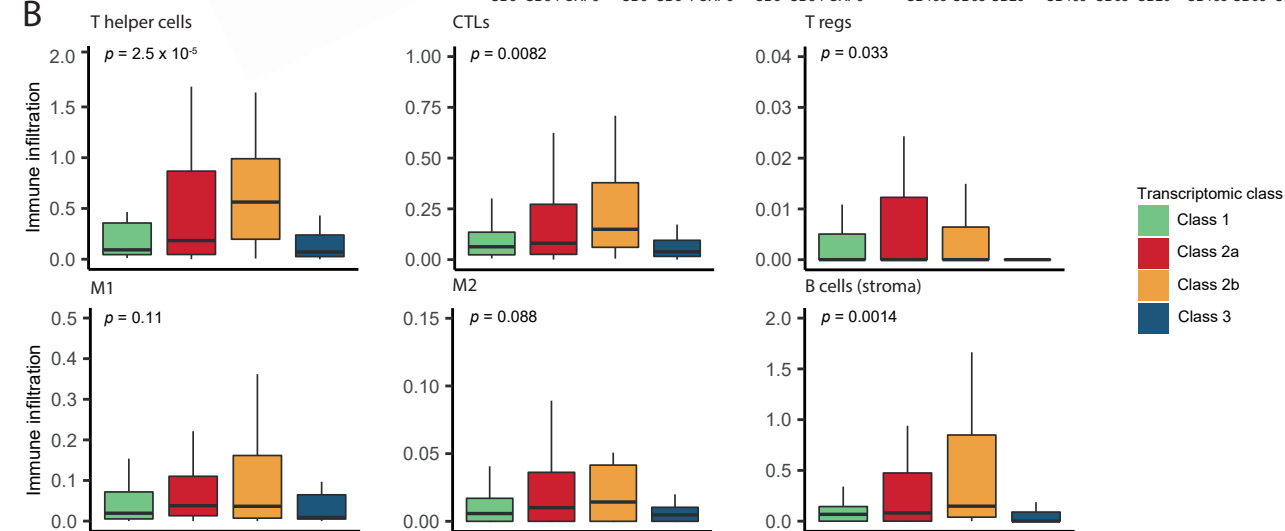
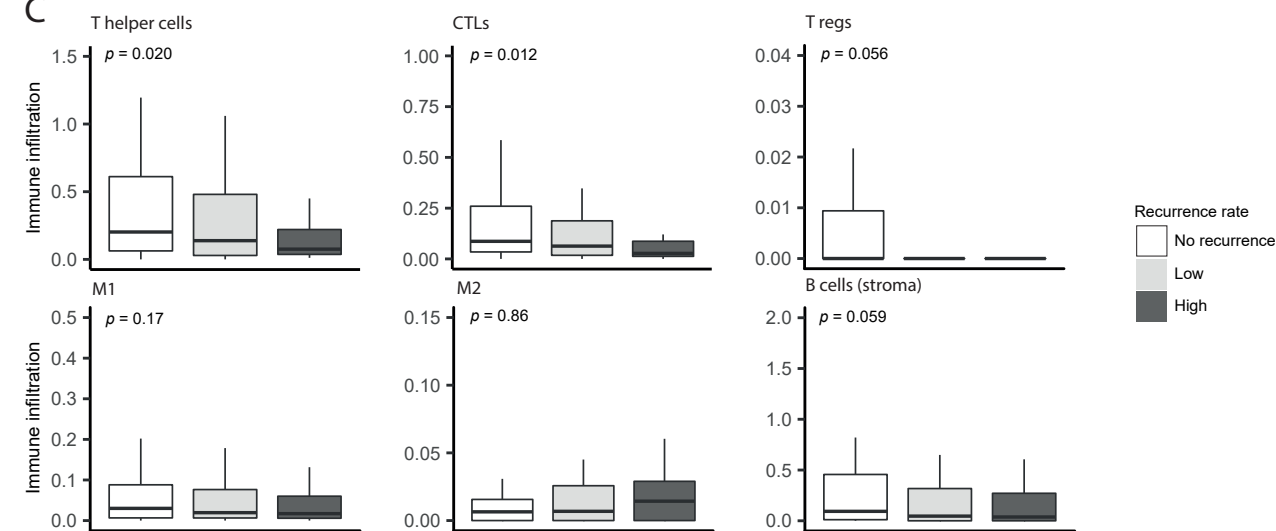
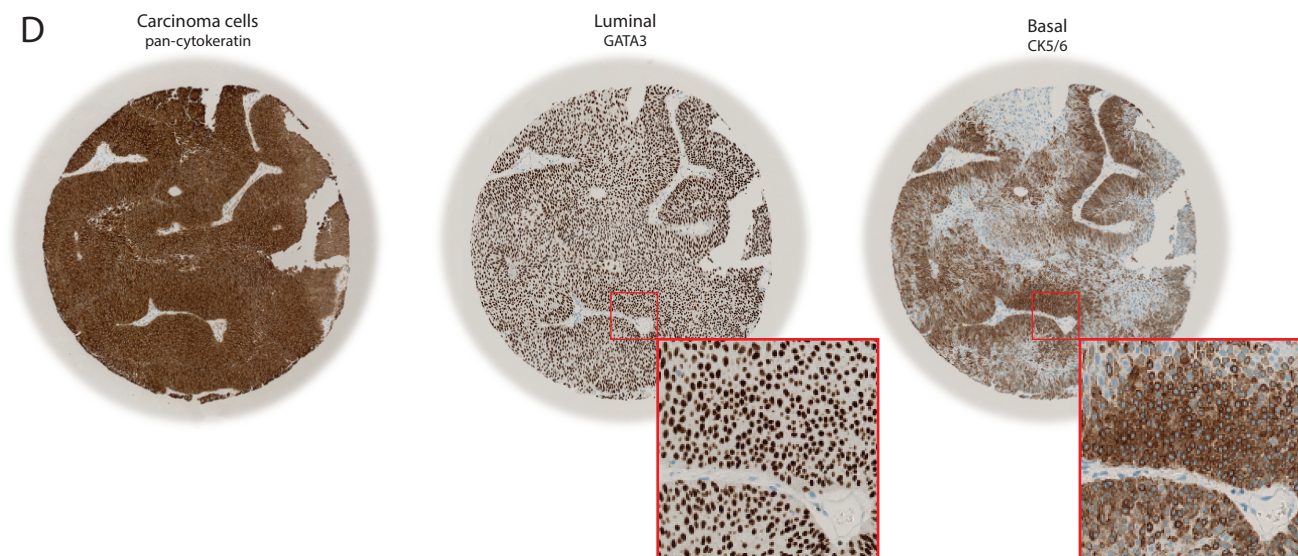
A**B****C****D**

Figure S5. Spatial proteomics analysis of tumor immune contexture, Related to Figure 4

a Digital pathology workflow. Step 1: Automated detection of the tumor parenchyma and stroma with a pan-cytokeratin IHC staining. Step 2: Alignment of this staining with mIF stainings of immune cell markers. Step 3: Automated detection of immune cells in the different regions (stroma and parenchyma) based on coexpression. **b** Immune cell infiltration according to transcriptomic class. Immune infiltration is defined as the percentage of cells in the parenchyma classified as the different immune cells. B cells were quantified in the stroma due to a low infiltration. **c** Immune cell infiltration according to recurrence rate. **d** Illustration of a tumor with both luminal (GATA3) and basal (CK5/6) characteristics.