

Supplementary Materials

News from the front: Estimation of excess mortality and life expectancy in the major epicenters of the COVID-19 pandemic in Italy

Authors

Simone Ghislandi¹, Raya Muttarak^{*2}, Markus Sauerberg³, Benedetta Scotti^{*1}

Affiliations

¹ Department of Social and Political Sciences, Bocconi University, Via Roentgen 1, 20136, Milan, Italy

² Wittgenstein Centre for Demography and Global Human Capital (Univ. Vienna, IIASA, VID/ÖAW), International Institute for Applied Systems Analysis, Schlossplatz 1, A-2361 Laxenburg, Austria

³ Wittgenstein Centre for Demography and Global Human Capital (Univ. Vienna, IIASA, VID/ÖAW), Vienna Institute of Demography, Austrian Academy of Sciences, Vordere Zollamtsstrasse 3, 1030 Vienna, Austria

Corresponding authors:

* Raya Muttarak

Address: International Institute for Applied Systems Analysis, Schlossplatz 1, A-2361 Laxenburg, Austria

Email: muttarak@iiasa.ac.at; Tel: +43 2236 807 329

* Benedetta Scotti

Address: Department of Social and Political Sciences, Bocconi University, Via Roentgen 1, 20136, Milan, Italy

Email: benedetta.scotti@unibocconi.it

This PDF file includes:

Figures S1 to S5

Tables S1

SI References

Supplementary figures

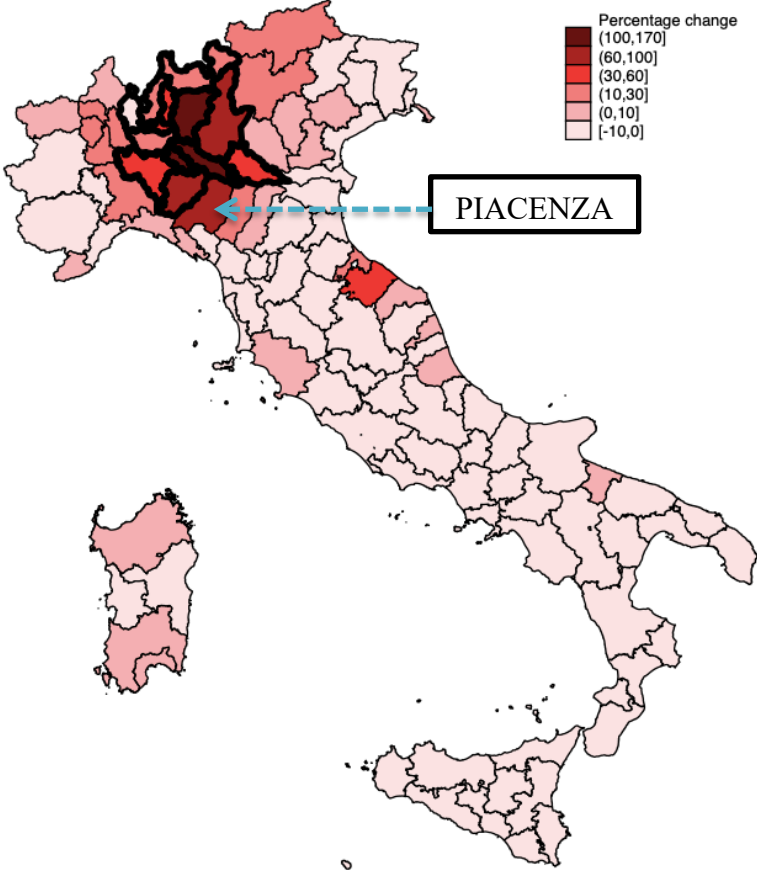


Figure S1: Excess mortality distribution across Italian provinces. The provinces in Lombardy are highlighted by the bold black line. The province of Piacenza is indicated by the blue arrow.

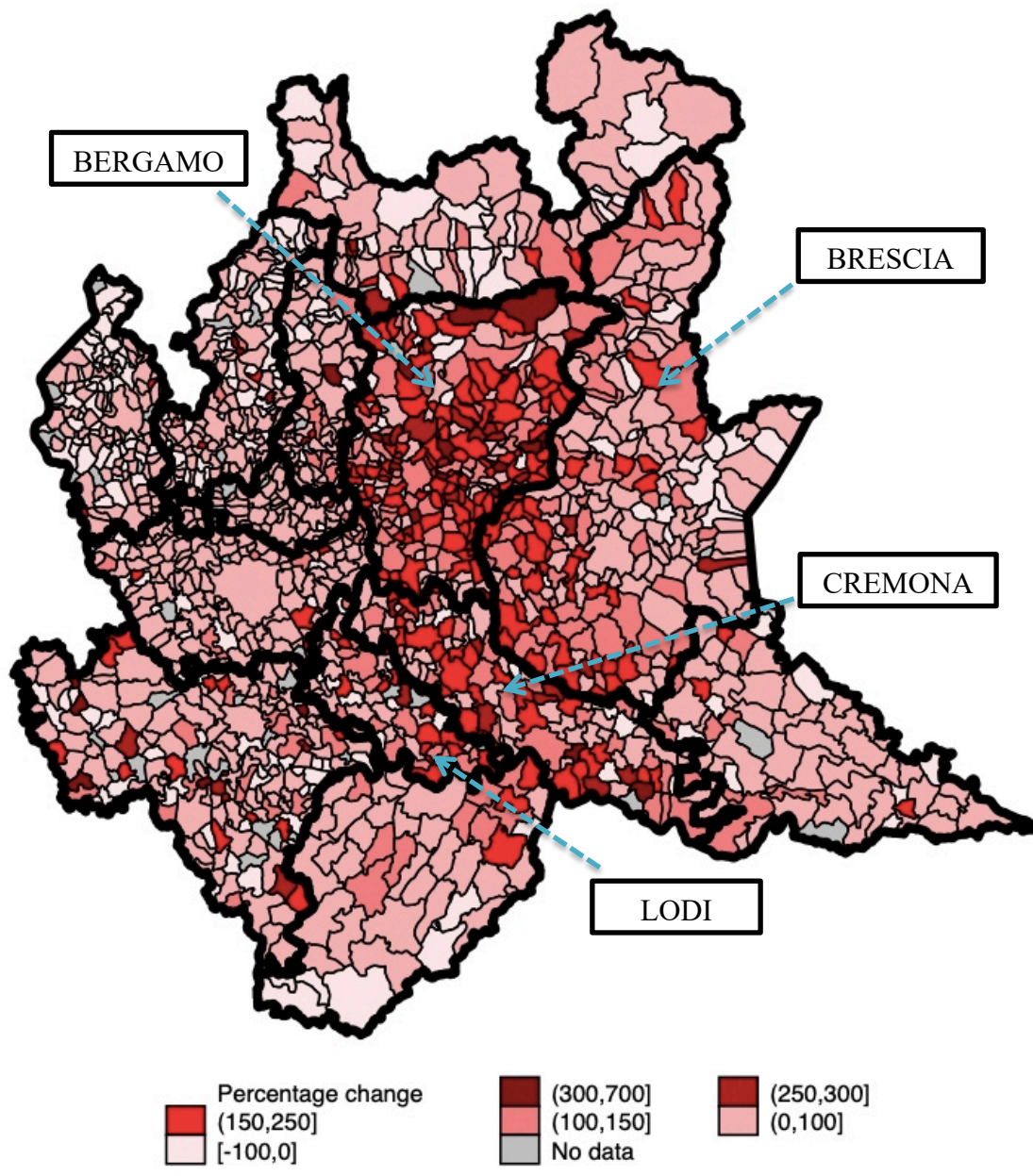


Figure S2: Excess mortality distribution in Municipalities in Lombardy. In bold, the borders of the provinces in Lombardy. The provinces of Bergamo, Brescia, Cremona and Lodi (included in the analysis) are highlighted.

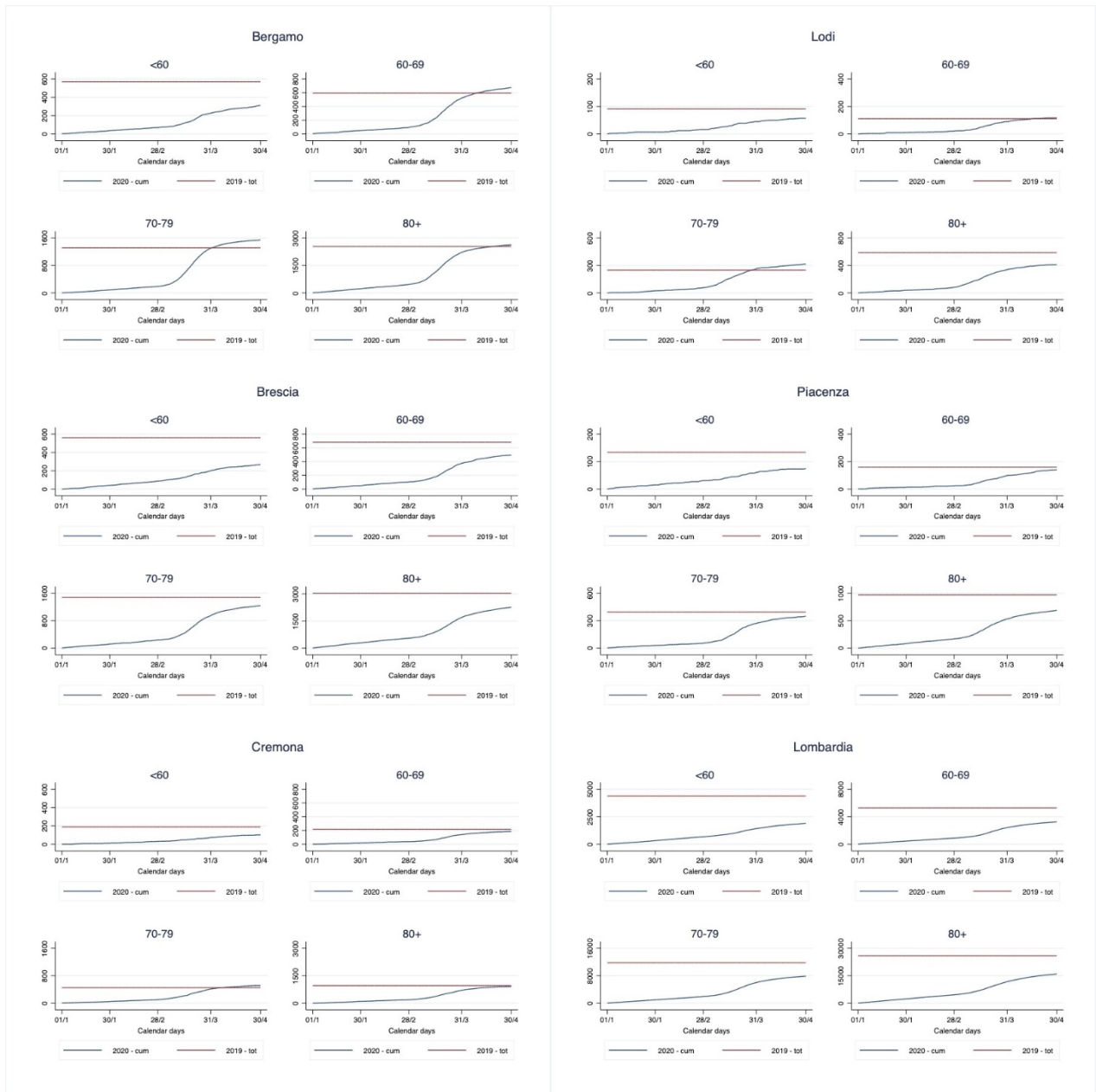


Figure S3A: Cumulative number of deaths (1 January – 30 April 2020) in the five provinces and in Lombardy for men. The red line represents the total number of death in 2019.

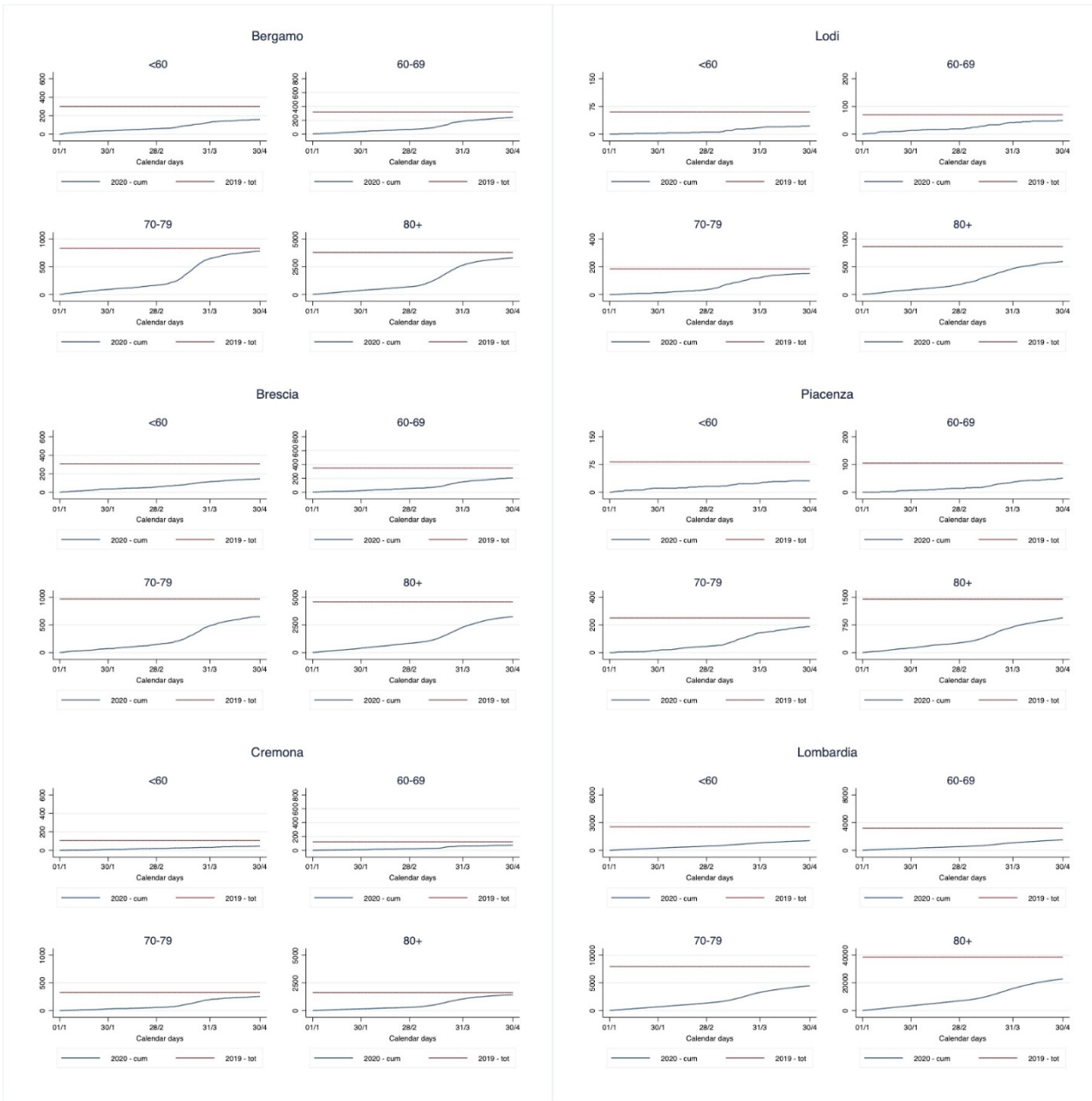


Figure S3B: Cumulative number of deaths (1 January – 30 April 30 2020) in the five provinces and in Lombardy for women. The red line represents the total number of death in 2019.

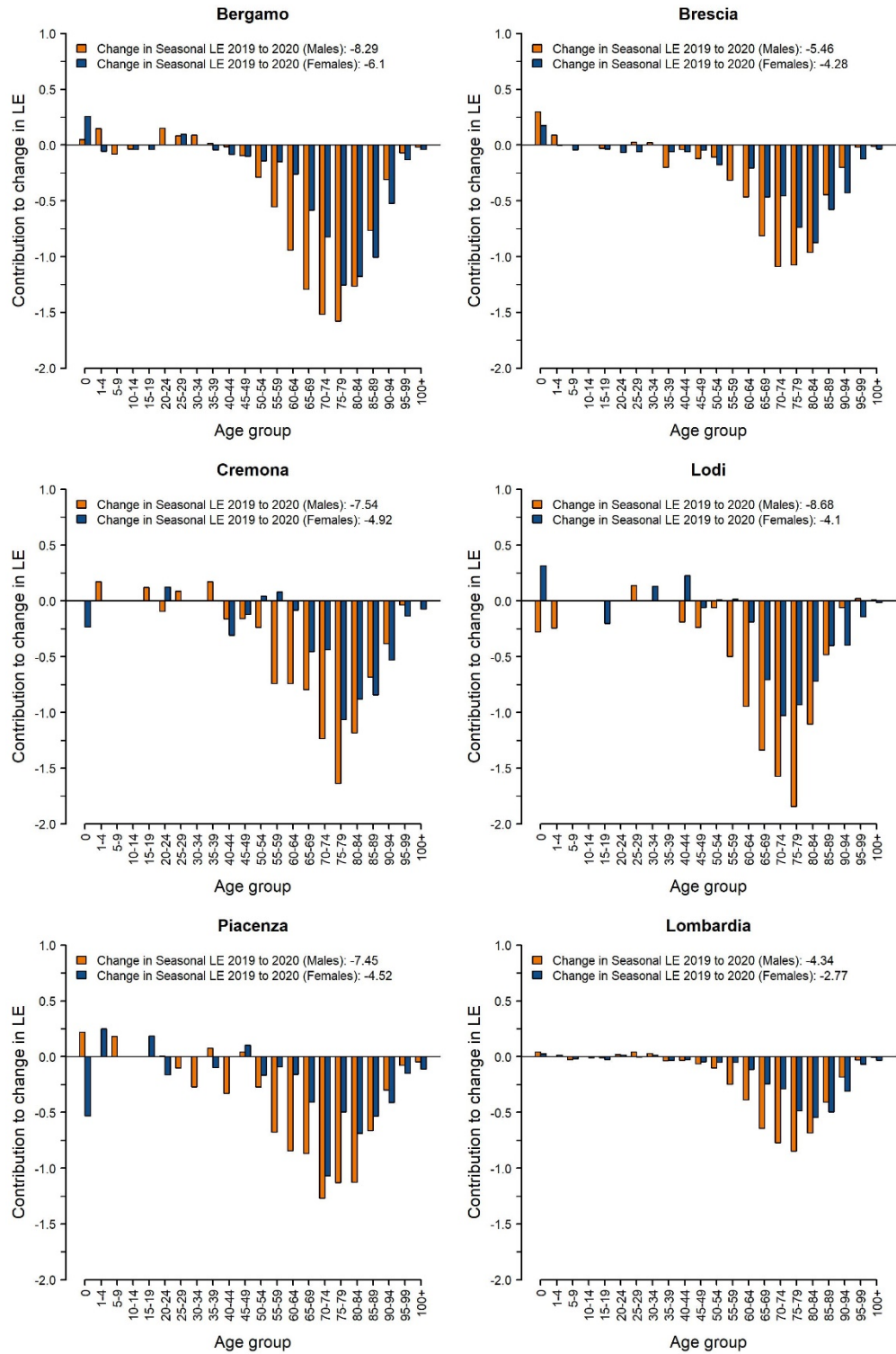


Figure S4: Decomposition of the loss of life expectancy in the first quadrimester, by age and sex and province.

Note: For decomposing changes in life expectancy into age-specific contributions, the method proposed by Arriaga ¹ is applied. This approach is used to assess which age-groups have primary contributed to the change in the first quadrimester life expectancy between 2019 and 2020.

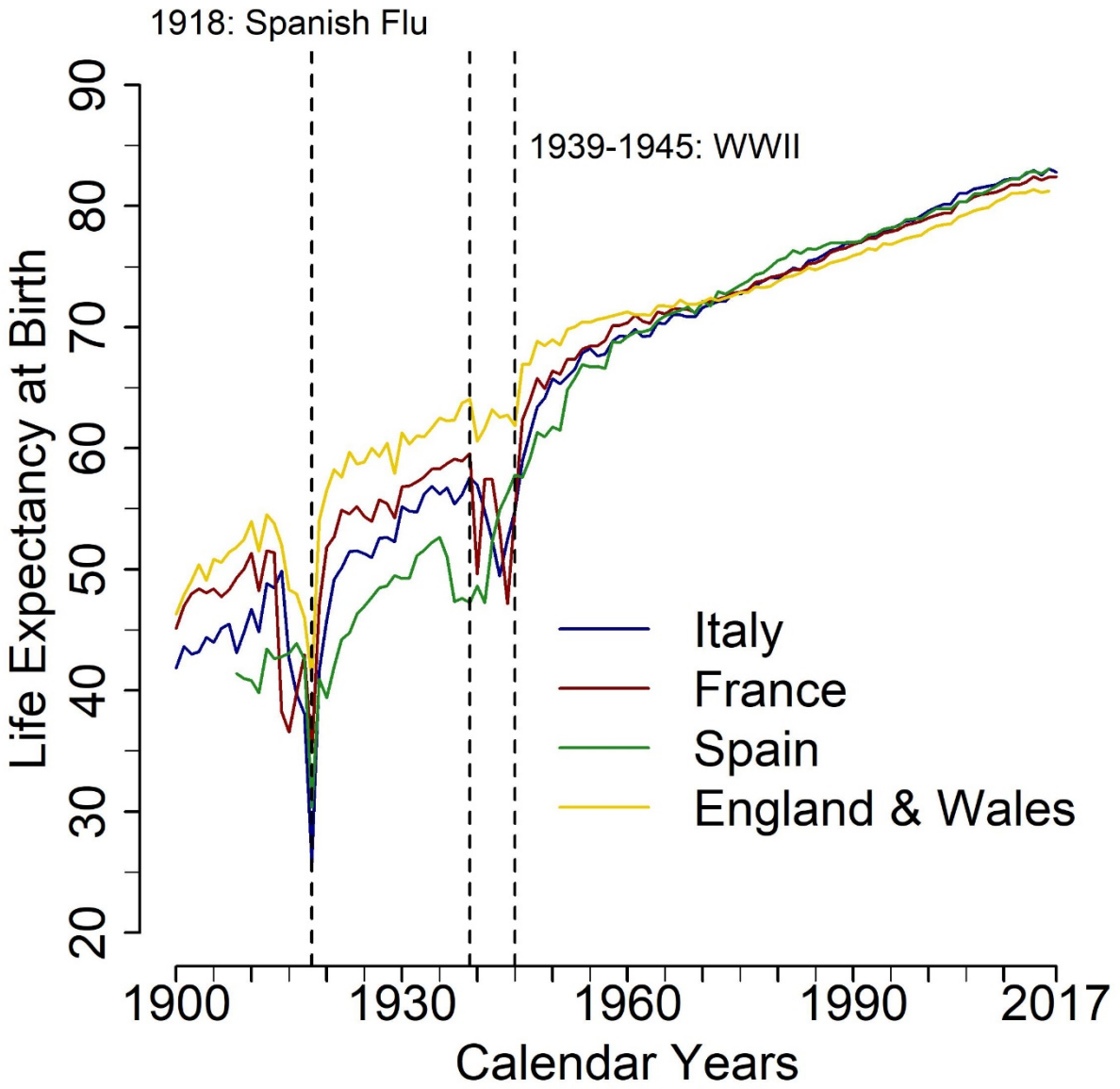


Figure S5: Trends in life expectancies by countries since 1900.

Note: Own elaborations from the Human Mortality Database.

Supplementary material: Data

Table S1. Data coverage (number of municipalities) by province and for Lombardy

Province/Region	# of municipalities	Data until 30 April 2020		
		# of municipalities	% of municipalities	% of population
Bergamo	243	241	99,2%	99,5%
Brescia	205	203	99,0%	99,7%
Cremona	113	112	99,1%	99,8%
Lodi	60	58	96,7%	98,9%
Piacenza	46	46	100,0%	100,0%
Lombardia	1506	1466	97,3%	98,6%

Supplementary material: Methods

Population and births projections

We estimate the resident population by age and sex for each of the selected five provinces on 1 January 2020 in the following steps. First, we aggregate resident population data by year, age class and sex at the province level. Then, we estimate the female and male resident population in each age class at the provincial level on 1 January 2020 by means of linear extrapolation based on the years 2015 to 2019. Likewise, we use available data on monthly live births between January 2015 and December 2019 to estimate monthly births over 2020 in each province.

Estimate procedures for excess mortality

Excess mortality is measured at any time t in 2020 as the difference between the observed and the expected number of deaths in 2020 in t . The expected number of deaths in t is defined as the average number of deaths observed in t over the period 2015-2019:

$${}_n D_x^{excess}(t_{2020}) = {}_n D_x^{observed}(t_{2020}) - {}_n D_x^{expected}(t_{2020})$$

with

$${}_n D_x^{expected}(t_{2020}) = \frac{1}{k} \sum_{i=1}^k {}_n D_x(t_{2020-i})$$

where the number of deaths in the age interval x to $x+n$ at time t are defined as ${}_n D_x(t)$.

Estimate procedures for life expectancy

(A) First quadrimester life expectancy

We calculate seasonal life expectancy for the period 1 January 1 to 30 April for the years 2015-2020 (separated for men and women). To do so, seasonal age-specific mortality rates are calculated for each year. We aggregate the daily death counts (the numerators) over the period 1 January 1 and 30 April at the provincial level (and at the regional level for Lombardy).

The corresponding exposures (i.e., the denominators) were estimated as follows. Starting from the estimated resident population on 1 January in 2020, we counted age-specific person-days up to 30 April. Theoretically, these counts are a function of four demographic events, namely births, ageing, migration, and dying. The daily inflow of births is estimated by using monthly birth data and assuming that these births are uniformly distributed throughout the month. The effect of ageing, i.e. individuals might be in transition in- and out of a given age interval, is modeled by giving each individual the probability of 1/365 for turning one year older during the observation period. The outflows due to deaths are straightforward as age-specific death counts are known on a daily basis. We assume no migration because the population being studied is under quarantine.

Formally, the exposed population at day t in age group x is given by the population alive at day $t-1$ in age group x plus those who age into age group x at day t minus those who either die in age group x or age out of the age group x in day t :

$${}_n E_x(t) = {}_n P_x(t-1) + {}_n Age_in_x(t) - {}_n D_x(t) - {}_n Age_out_x(t)$$

We express the obtained daily exposure values in terms of person-years by multiplying them by 1/365 (1/366 for leap years). Then, we derive age-specific mortality rates for the period 1 January 1 to 15 April by dividing ${}_n D_x(t)$ by ${}_n E_x(t)$. Finally, life tables are built following standard procedures outlined by the Human Mortality Database protocol ². Life expectancy at birth (seasonal or annual) can be expressed as:

$$e_0(t) = \frac{1}{l_0} \sum_{x=0}^{\infty} {}_n L_x(t)$$

with ${}_n L_x$ being the number of person-years lived between age x and $x+n$ in a life table for the period t and l_0 the life table radix (i.e., 100,000 newborns).

We estimate confidence intervals for life expectancies by bootstrapping using Monte Carlo simulation methods, assuming death counts follow a binomial distribution ^{3,4}.

(B) Annual life expectancy

When estimating life expectancy at the end of calendar year 2020, harvesting (i.e. the reduction in mortality rates following peak mortality associated to shock events) should be taken into consideration ⁵. Here life expectancy for the entire 2020 is estimated considering two alternative scenarios: 1) optimistic scenario; and 2) business-as-usual scenario.

In the optimistic scenario (full harvesting), we assume the mortality rate at the end of the year will be the same as in 2019. In this approach, the main effect of COVID-19 would be to anticipate mortality to the first quarter of the year 2020. In the business-as-usual scenario, harvesting is set to zero and we assume that after the end of the epidemic, mortality rates will go back to the average levels recorded in the previous years.

After 30 April, we project mortality until the end of the year based on the two scenarios.

In the optimistic scenario, we assume that after the end of the COVID-19 epidemics, deaths in each age class will occur such that the total number of deaths in 2020 equals the total number of deaths registered in 2019. If the cumulative number of deaths by the end of the epidemics in any age class exceeds the total number of deaths registered in 2019, we assume zero deaths will occur after the end of the epidemics in that age class.

In the business-as-usual scenario, we assume that mortality will return to the average levels recorded in 2015-2019, the most recent years for which data on annual death counts are available. Thus, it is possible to derive the number of deaths occurring after 30 April as the difference between the annual death counts and deaths registered up to 30 April for the years 2015-2019. As we do not know the daily distribution of deaths after 30 April, we make two assumptions based on empirical evidence ⁶. For age groups <50, we assume that deaths occur uniformly over the period 1 May – 31 December 2020. For age groups ≥ 50 , we assume that deaths between May and December 2020 occur following the 2015-2019 average distribution of monthly deaths. We then assume that deaths distribute uniformly within each month between May and December 2020.

We then proceed with the estimation of population exposure for each day between 1 January and 31 December 2020 under both scenarios following the same procedure detailed above. Finally, we aggregate death counts and population exposure values over the entire year to derive age-specific mortality rates and life expectancies under both scenarios.

For calendar years 2015-2019, we compute age-specific mortality rates by dividing total annual death counts over mid-year population, and derive life expectancies accordingly.

SI References

- 1 Arriaga EE. Measuring and Explaining the Change in Life Expectancies. *Demography* 1984; **21**: 83–96.
- 2 Wilmoth JR, Andreev K, Jdanov D, Gleijer A, Riffe T. Methods Protocol for the Human Mortality Database. The Human Mortality Database, 2019
<https://www.mortality.org/Public/Docs/MethodsProtocol.pdf>.
- 3 Andreev EM, Shkolnikov V. Spreadsheet for calculation of confidence limits for any life table or healthy-life table quantity. Rostock: Max Planck Institute for Demographic Research, 2010
https://www.demogr.mpg.de/en/publications_databases_6118/publications_1904/mpidr_technical_reports/spreadsheet_for_calculation_of_confidence_limits_for_any_life_table_or_healthy_life_table_quantity_3853 (accessed April 28, 2020).
- 4 Chiang CL. *The Life Table and Its Applications*, Original edition. Malabar, FL: Krieger Publishing Company, 1984.
- 5 Luy M, Di Giulio P, Di Leggio V, Lazarevič P, Sauerberg M. Life Expectancy: Frequently Used, but Hardly Understood. *Gerontology* 2019. DOI:10.1159/000500955.
- 6 Ho T, Noymer A. Summertime, and the livin' is easy: Winter and summer pseudoseasonal life expectancy in the United States. *Demographic Research* 2017; **37**: 1445–76.