

Supplementary figures

Scaling diagnostics in times of COVID-19: Colorimetric Loop-mediated Isothermal Amplification (LAMP) assisted by a 3D-printed incubator for cost-effective and scalable detection of SARS-CoV-2

Everardo González-González^{1,2}, Itzel Montserrat Lara-Mayorga^{1,3}, Iram Pablo Rodríguez-Sánchez^{4,5}, Felipe Yee-de León⁶, Andrés García-Rubio^{1,3}, Carlos Ezio Garciaméndez-Mijares^{1,3,7}, Gilberto Emilio Guerra-Alvarez^{1,3}, Germán García-Martínez^{1,3,7}, Juan Andrés Aguayo-Hernández^{1,3}, Eduardo Márquez-García⁸, Yu Shrike Zhang⁷, Sergio O. Martínez-Chapa³, Joaquín Zúñiga^{9,10}, Grissel Trujillo-de Santiago^{1,3,*}, Mario Moisés Alvarez^{1,2*}

¹ Centro de Biotecnología-FEMSA, Tecnológico de Monterrey, CP 64849, Monterrey, NL, México

² Departamento de Bioingeniería, Tecnológico de Monterrey, CP 64849, Monterrey, NL, México

³ Departamento de Ingeniería Mecatrónica y Eléctrica, Tecnológico de Monterrey, CP 64849, Monterrey, NL, México

⁴ Universidad Autónoma de Nuevo León, Facultad de Ciencias Biológicas, Laboratorio de Fisiología Molecular y Estructural. 66455, San Nicolás de los Garza, NL, México.

⁵ Alfa Medical Center, Guadalupe, CP 67100, NL, México.

⁶ Delee Corp. Mountain View 94041, CA, USA

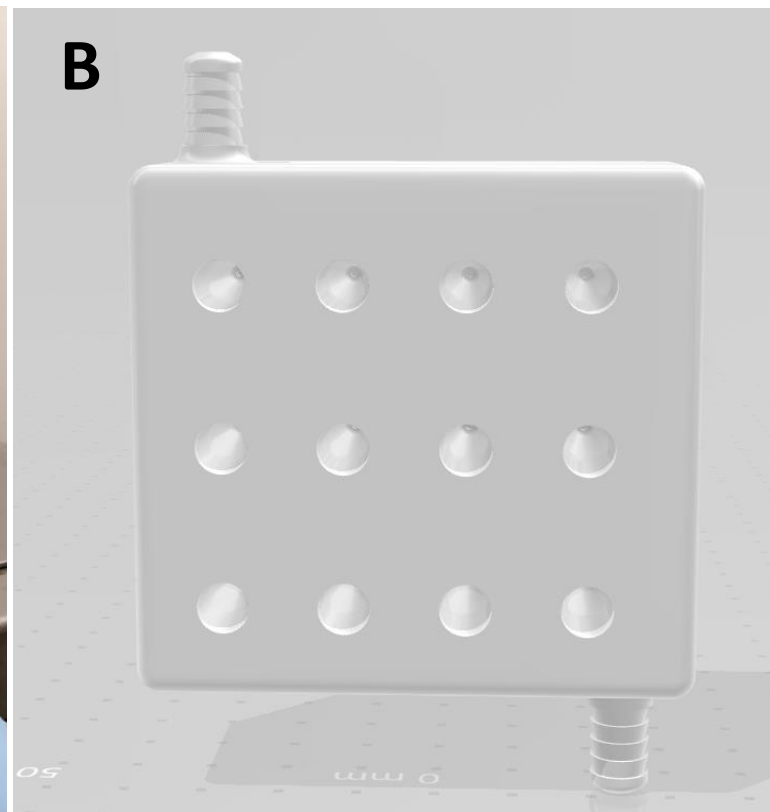
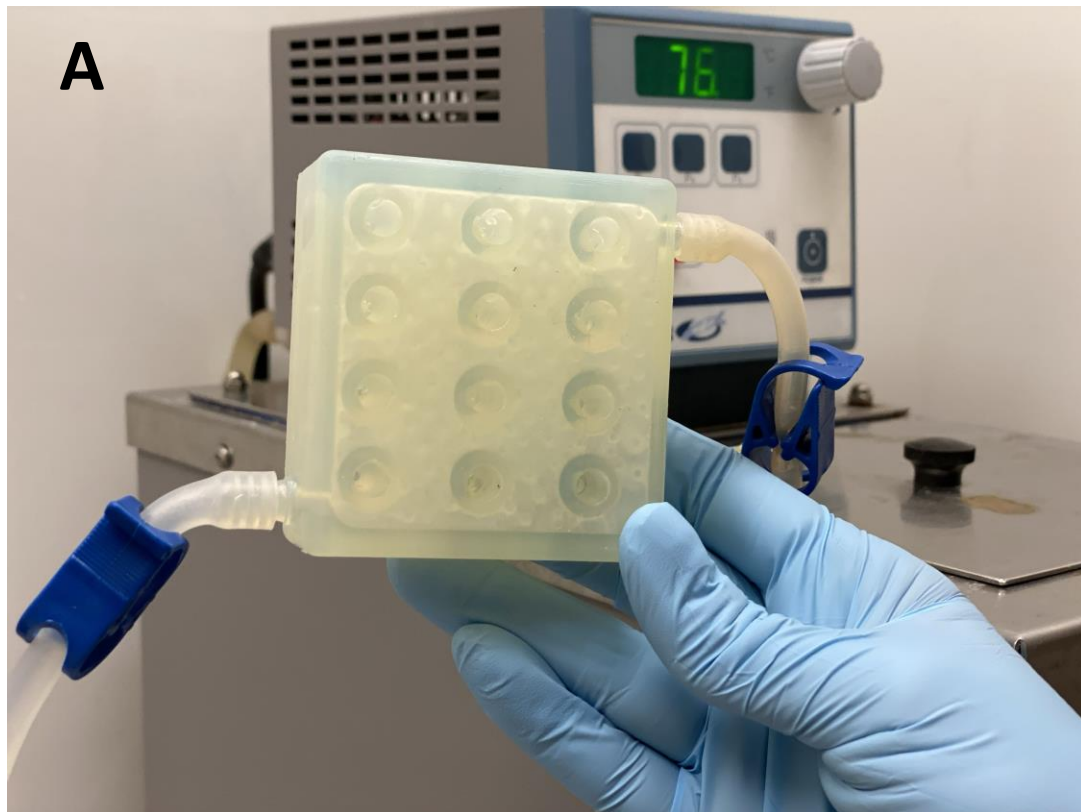
⁷ Division of Engineering in Medicine, Department of Medicine, Brigham and Women's Hospital, Harvard Medical School, Cambridge 02139, MA, USA

⁸ Laboratorio de Inmunobiología y Genética, Instituto Nacional de Enfermedades Respiratorias Ismael Cosío Villegas, Cd. de México, México.

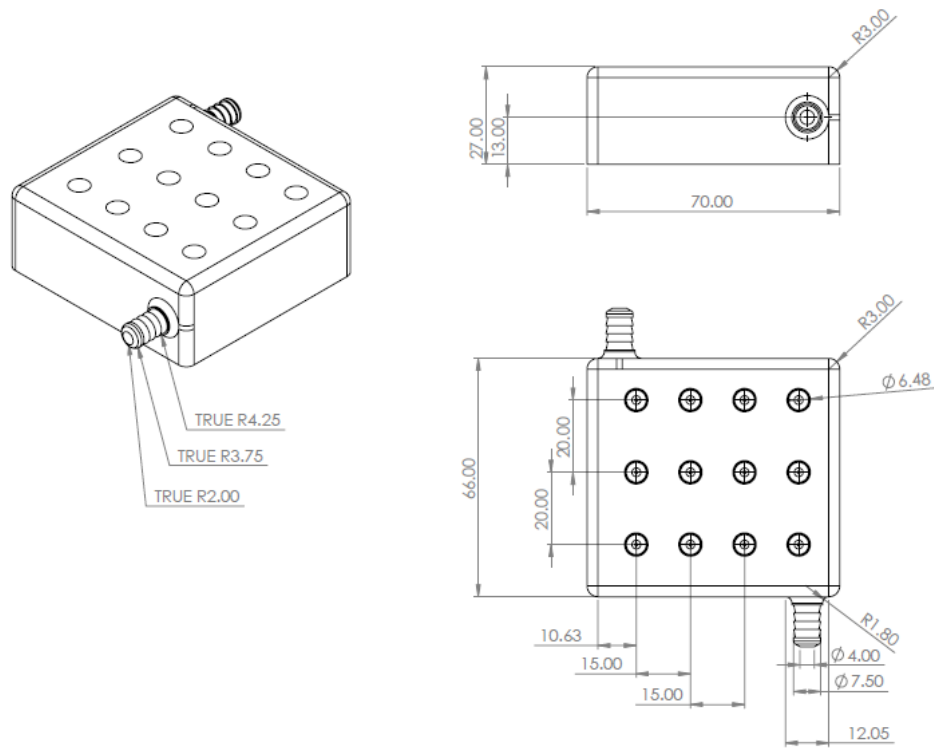
⁹ Unidad de Biología Molecular, Instituto Nacional de Enfermedades Respiratorias Ismael Cosío Villegas, Cd. de México, México.

¹⁰ Escuela de Medicina y Ciencias de la Salud, Tecnológico de Monterrey, CP 14380, Cd. de México, México

*Corresponding authors. E-mails: mario.alvarez@tec.mx; grissel@tec.mx;



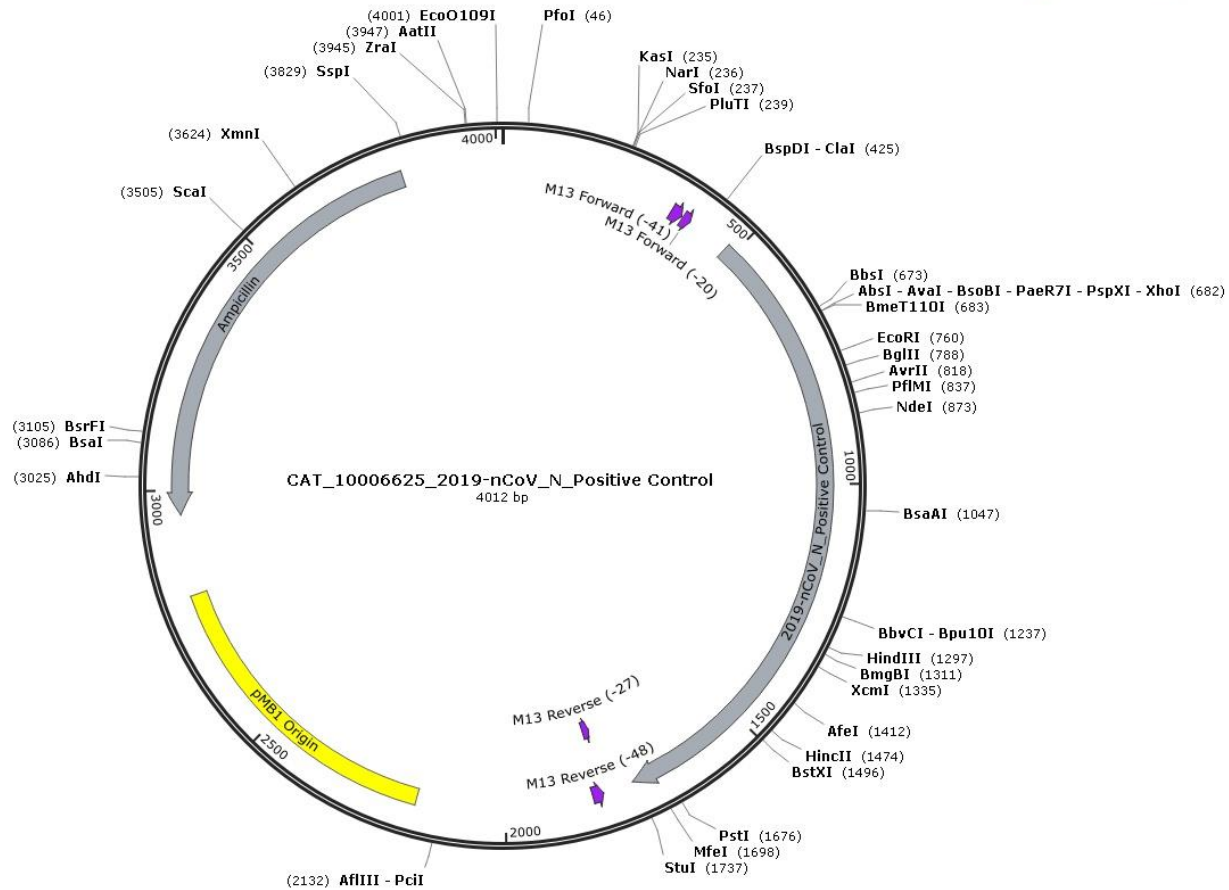
Supplementary Figure 1



Supplementary Figure 2

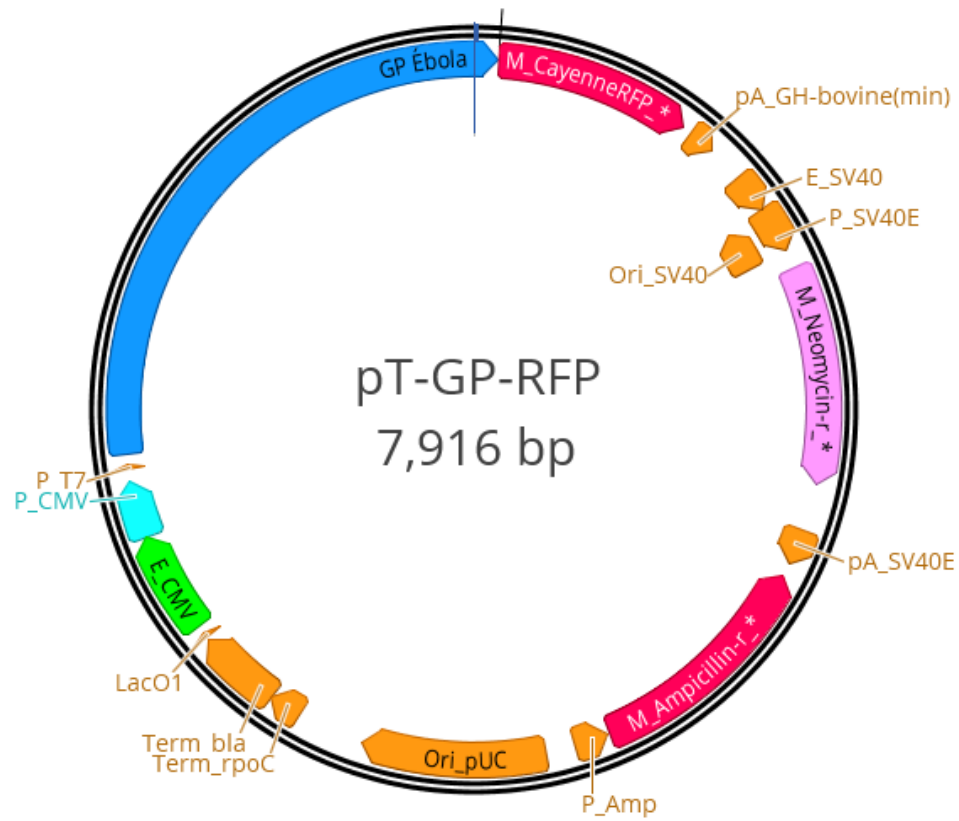
Positive Control: 2019-nCoV_N

Created with SnapGene®

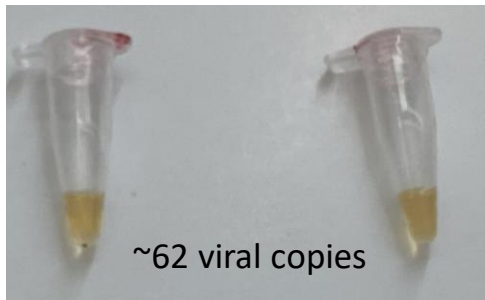


Supplementary Figure 3

Negative Control: GP EBOV



Supplementary Figure 4

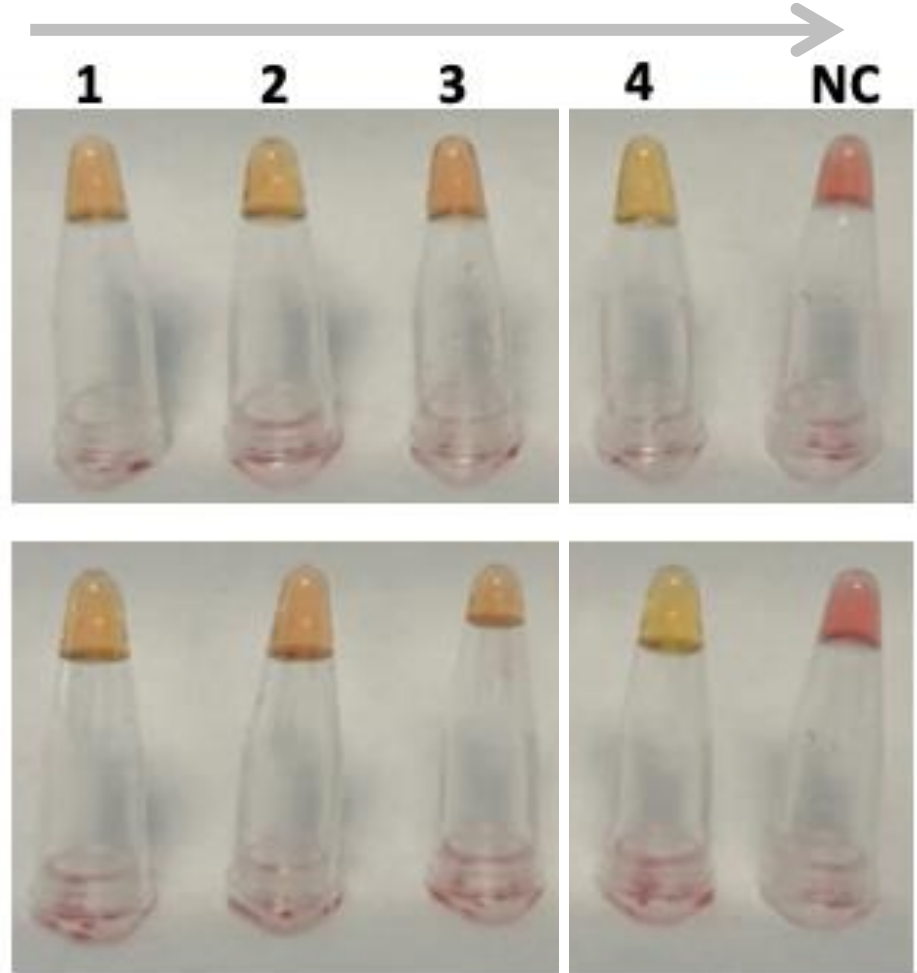
ASet α Set β **B**

Storage temperature

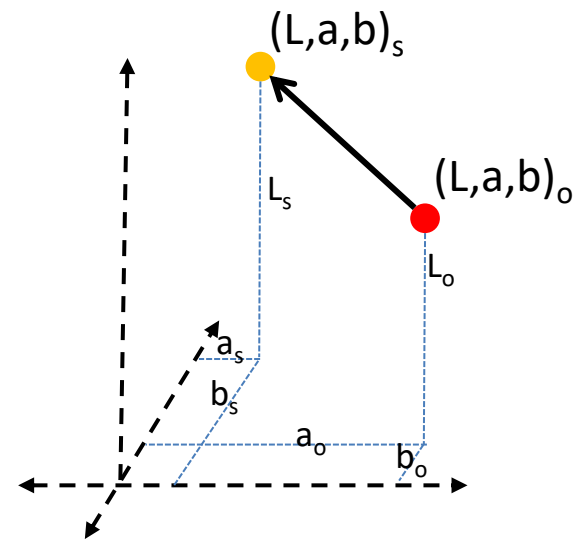
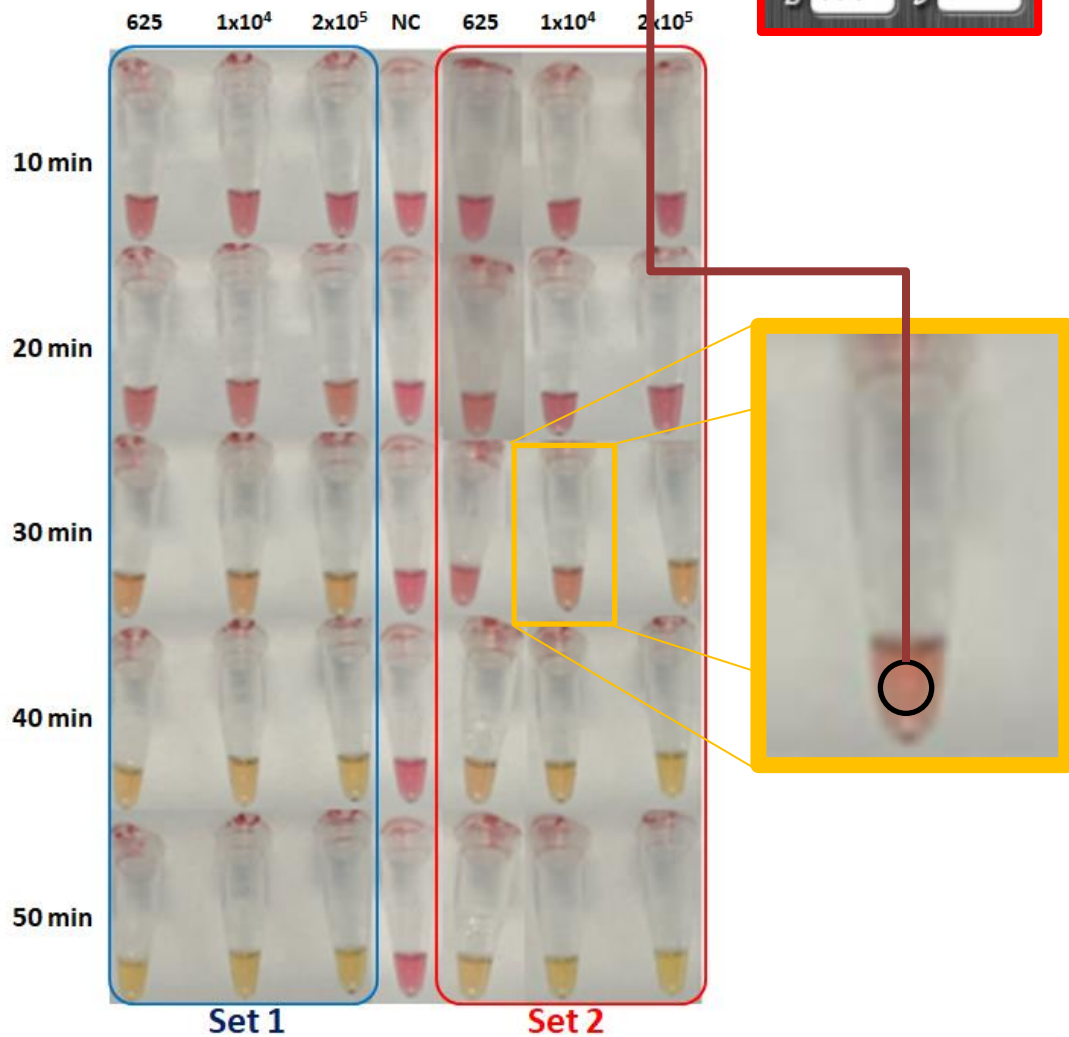
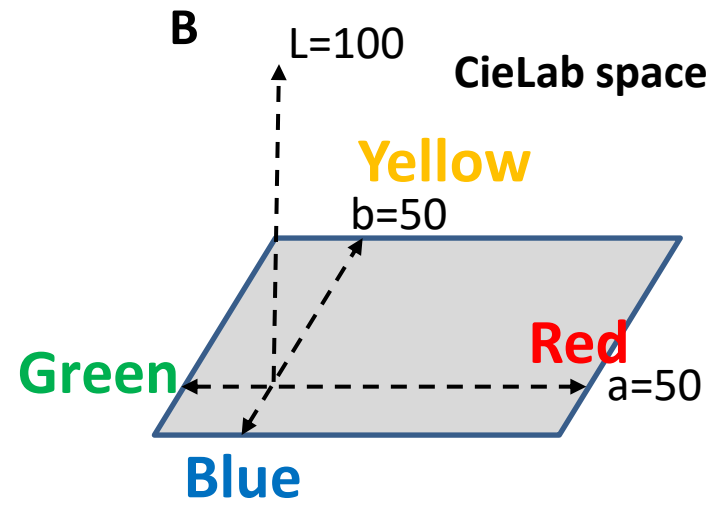
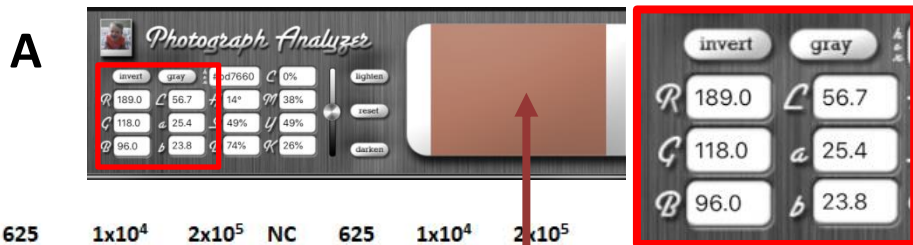
4 °C

20 °C

Storage time (days)

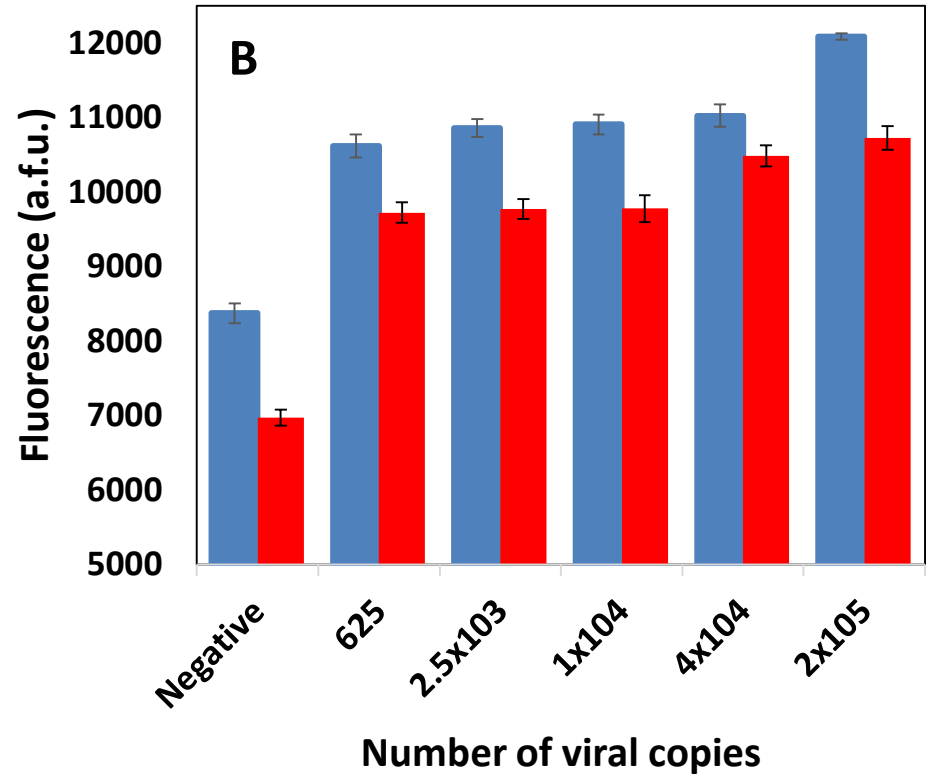


Supplementary Figure 5

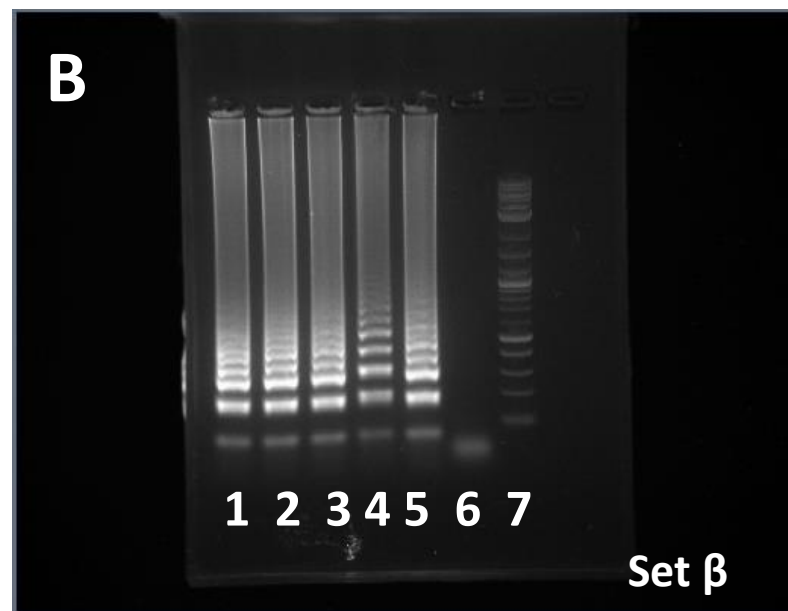
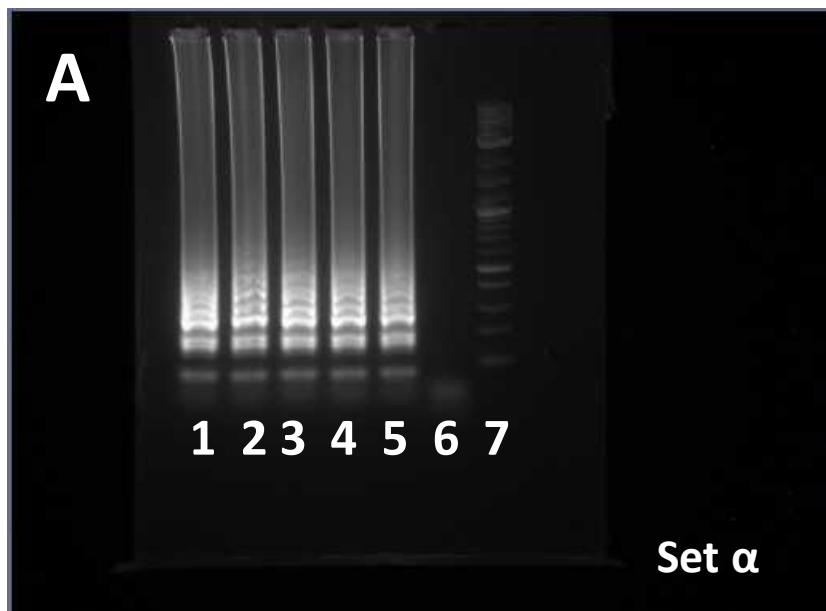


Supplementary Figure 6

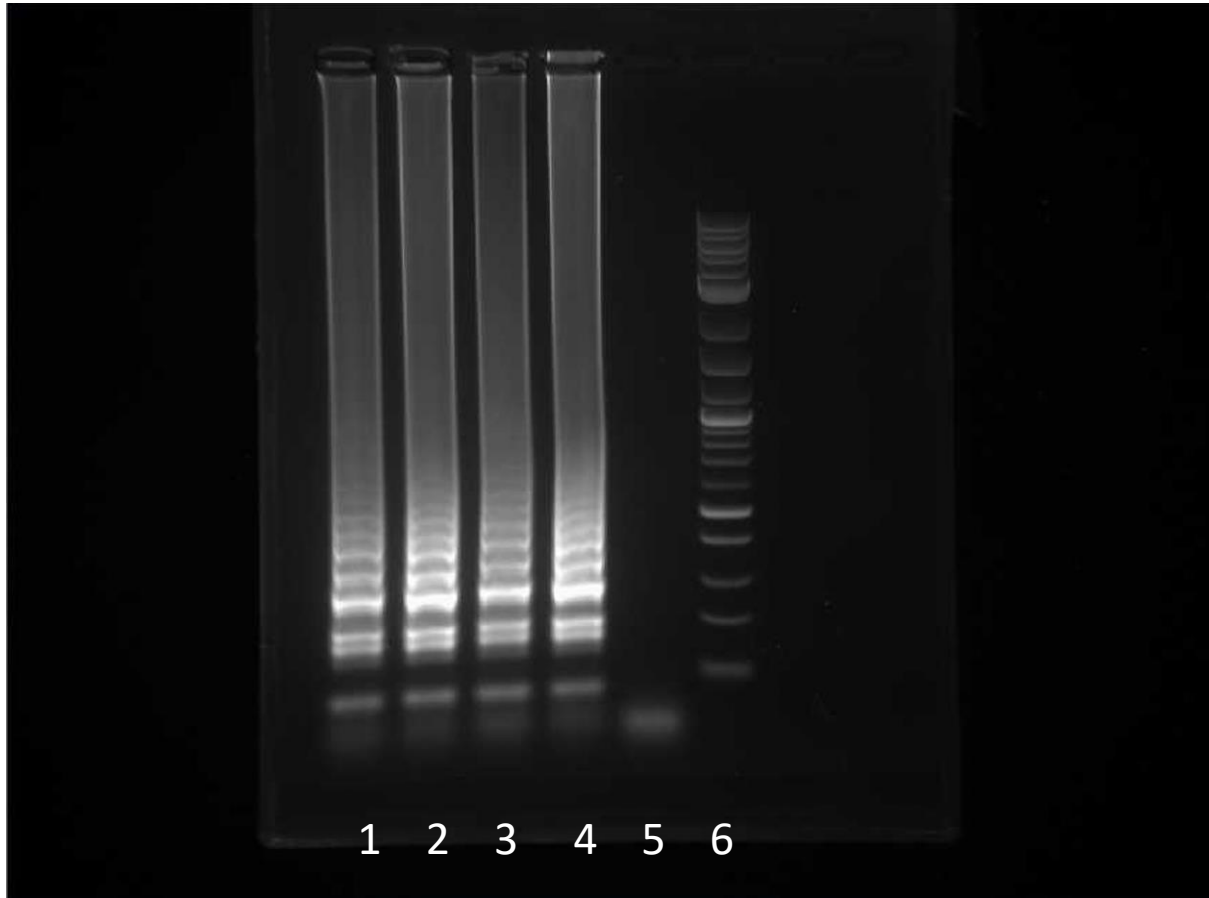
A



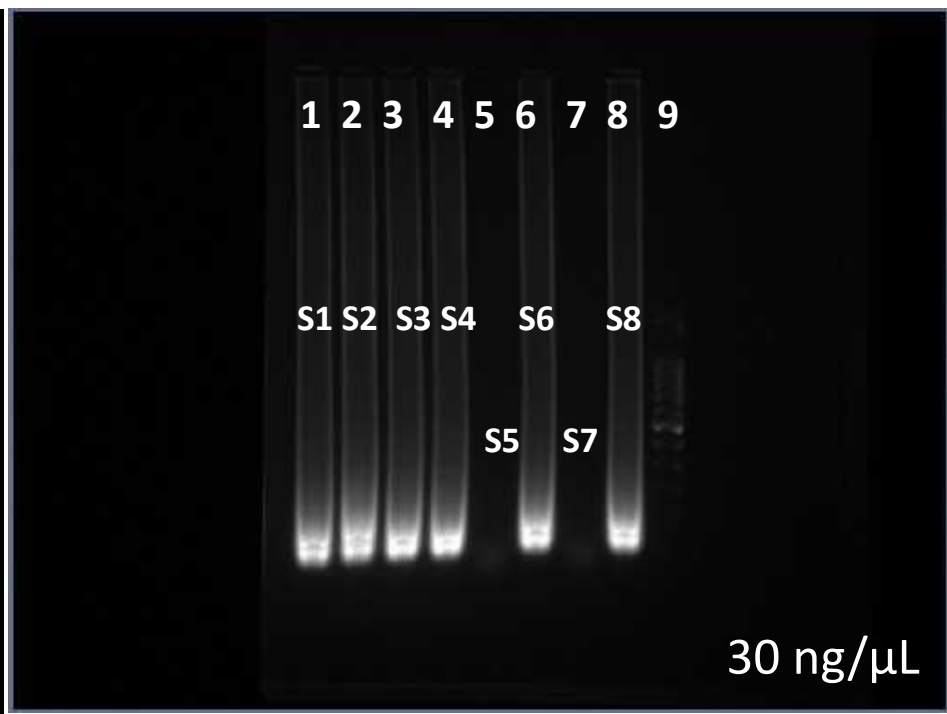
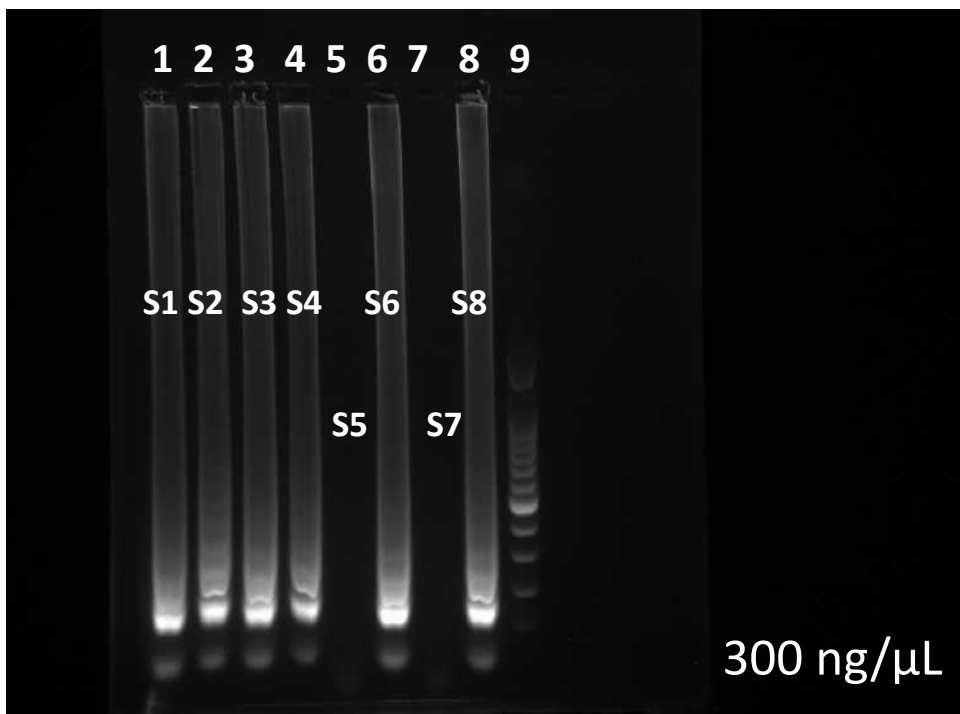
Supplementary Figure 7



Supplementary Figure 8



Supplementary Figure 8



Supplementary Figure 10