

Supplementary File

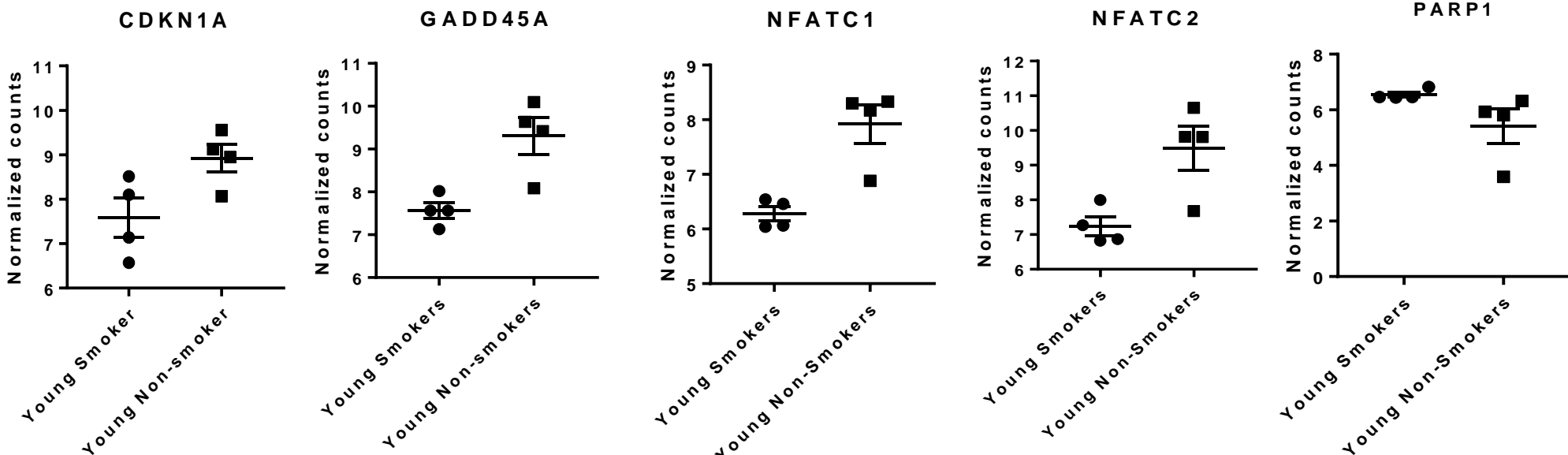
Age-dependent assessment of genes involved in cellular senescence, telomere and mitochondrial pathways in human lung tissue of smokers, COPD and IPF: Associations with SARS-CoV-2 COVID-19 ACE2-TMPRSS2-Furin-DPP4 axis

Krishna P. Maremanda¹, Isaac K. Sundar¹, Dongmei Li² and Irfan Rahman^{1*}

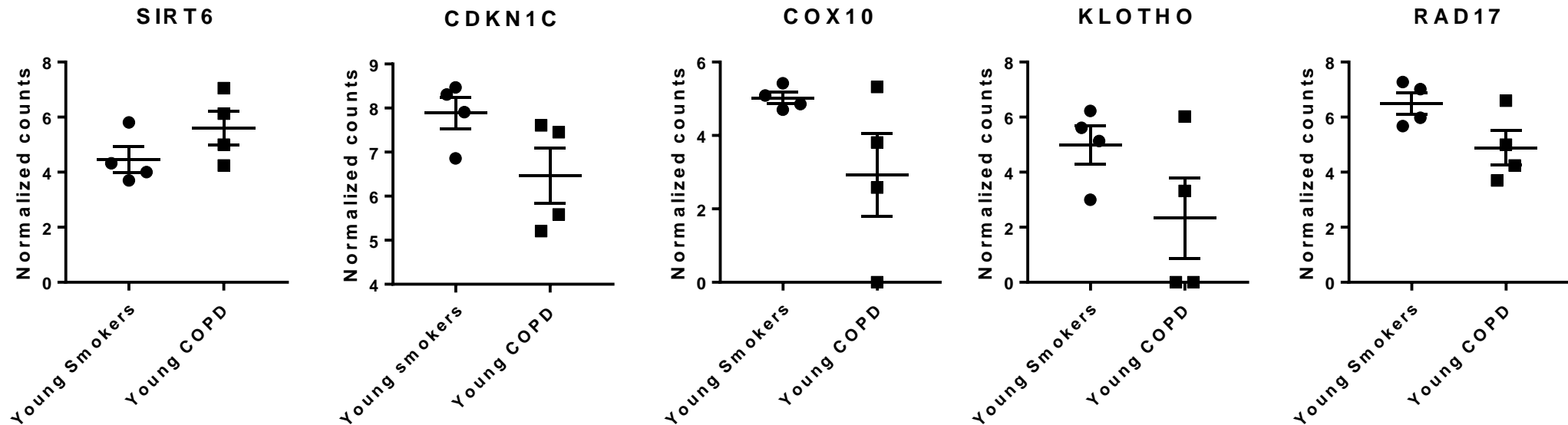
¹Department of Environmental Medicine, ² Department of Clinical & Translational Research,
University of Rochester Medical Center,
Rochester, NY, USA

Supplementary figure 1.

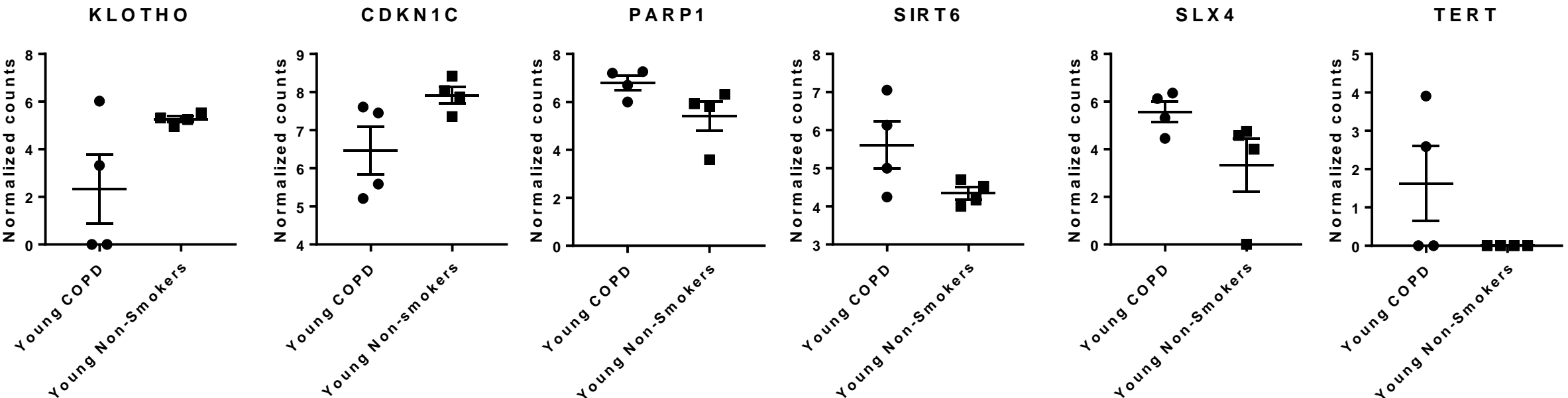
Young (Smokers vs. Non-smokers)



Young (Smokers vs. COPD)

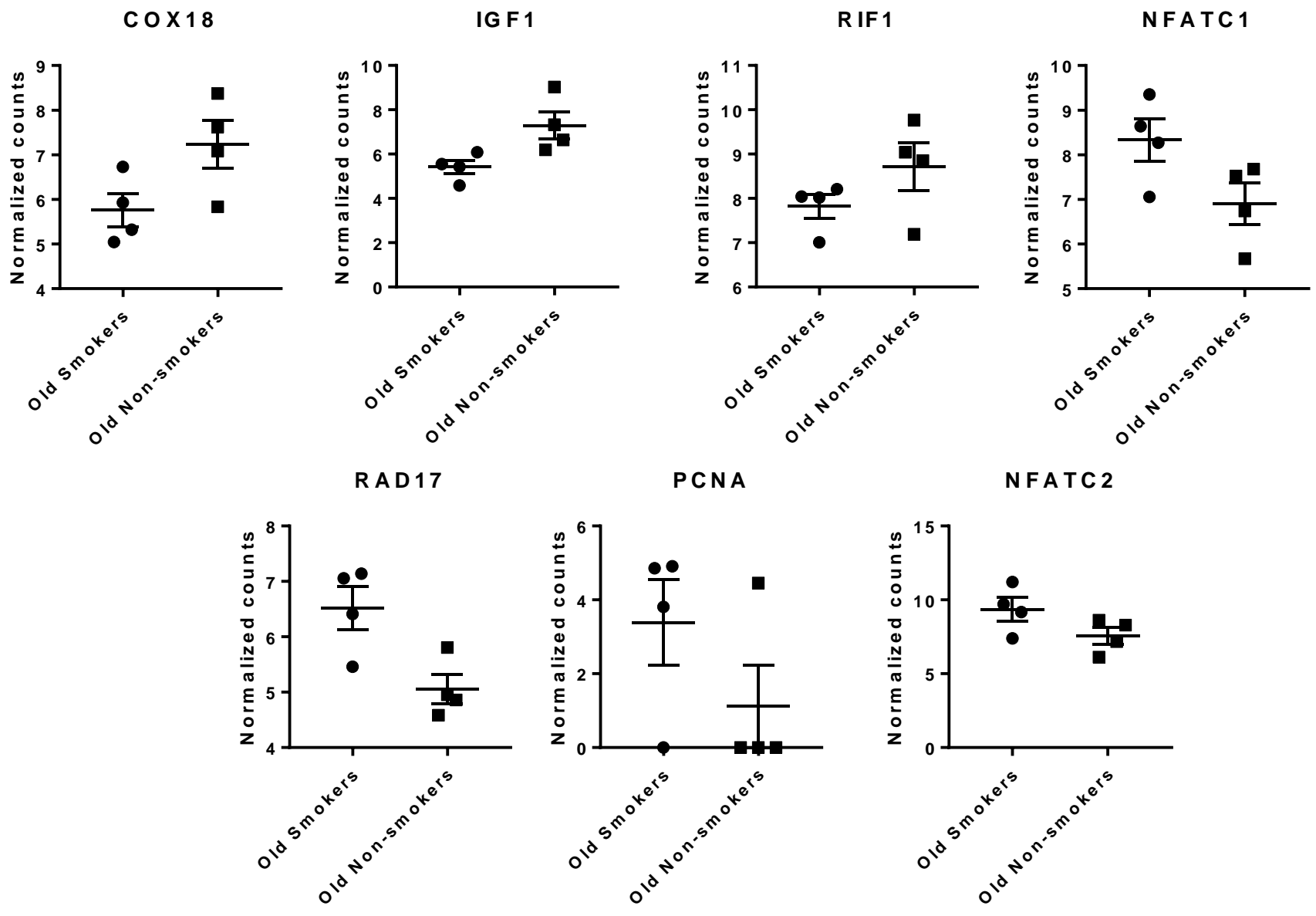


Young (COPD vs. Non-smokers)

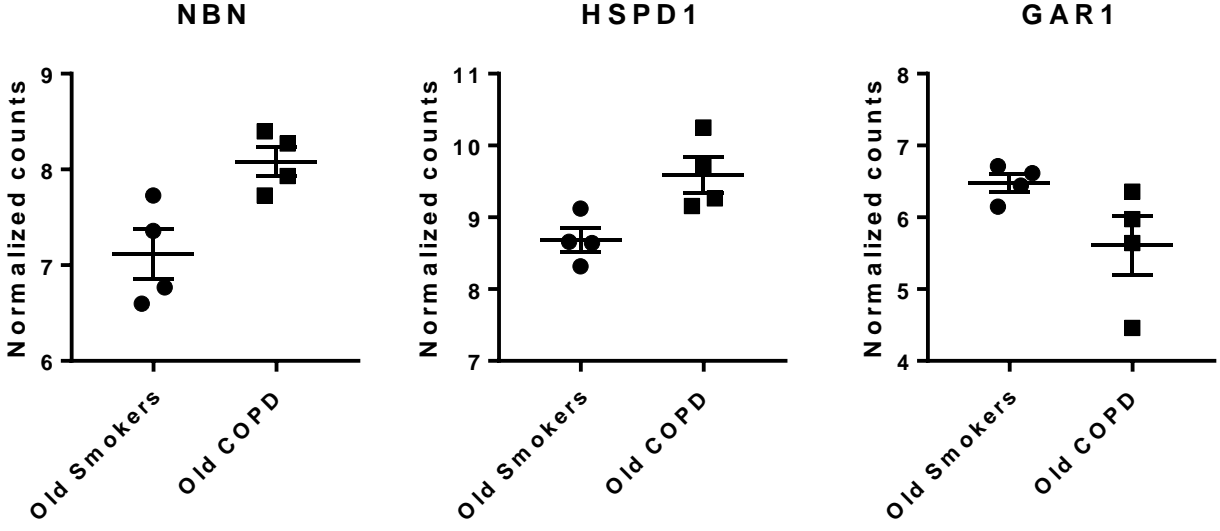
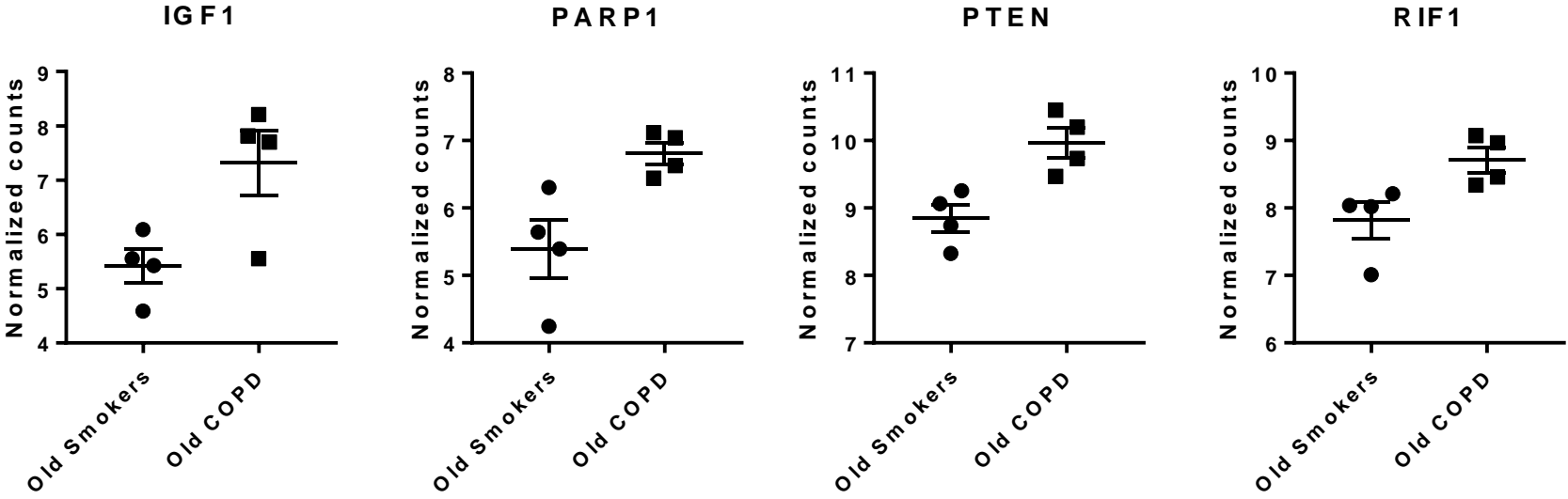


Supplementary figure 2.

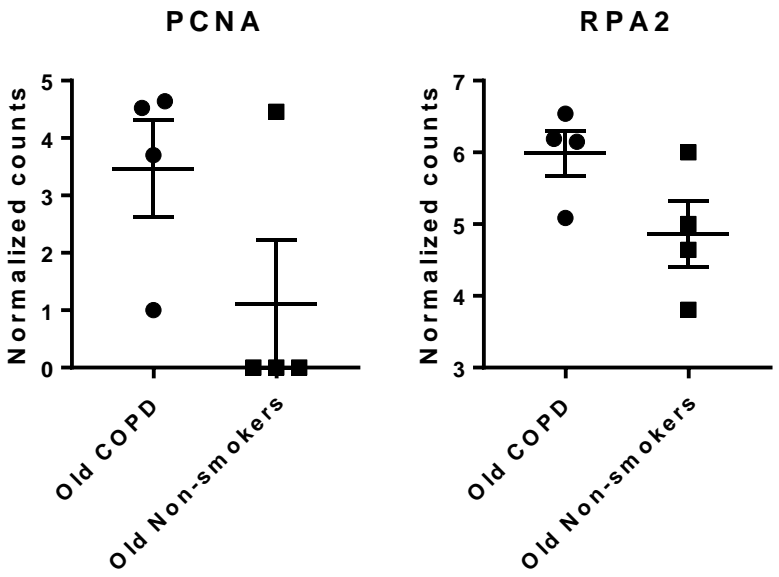
Old (Smokers vs. Non-smokers)



Old (Smokers vs. COPD)

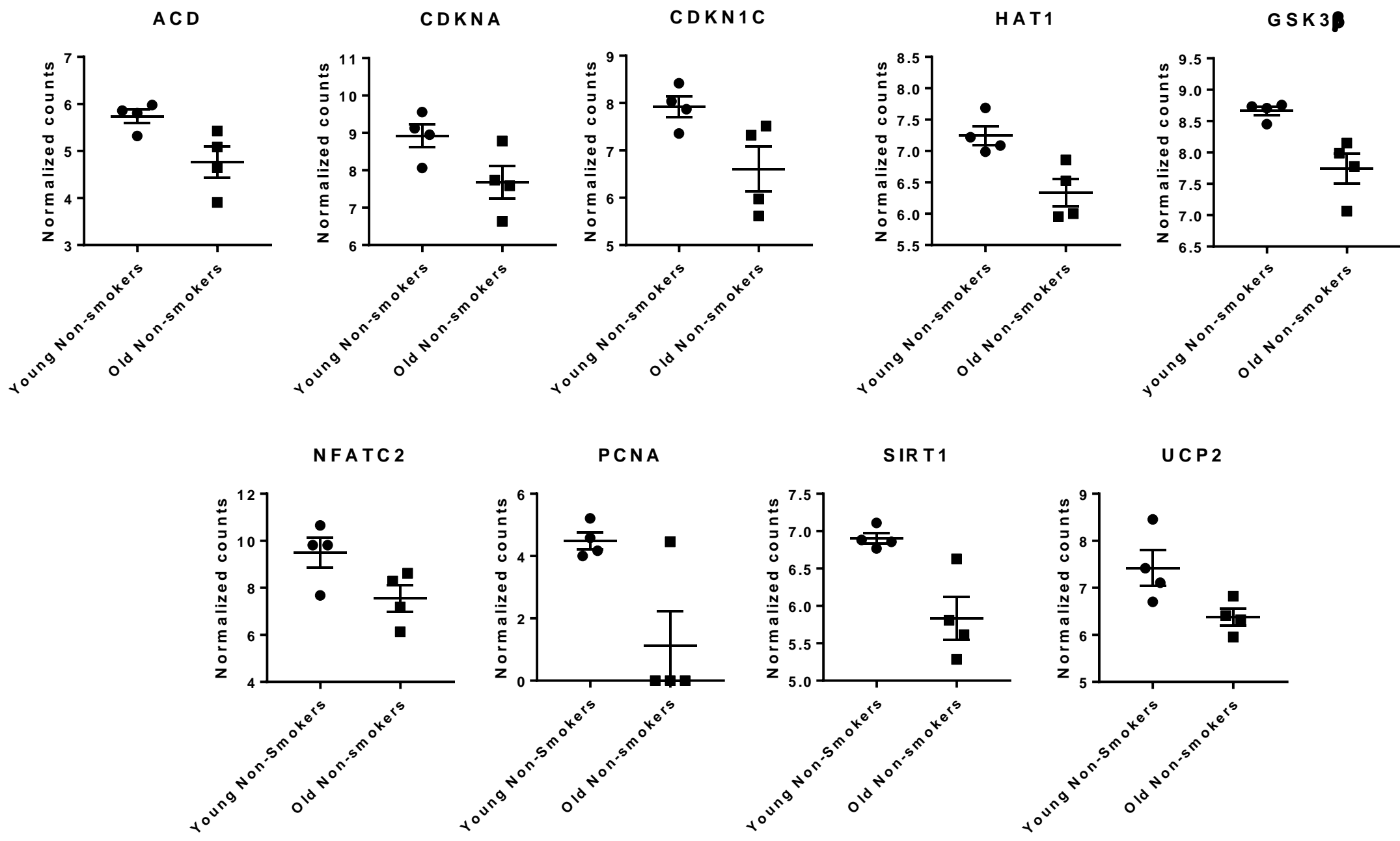


Old (COPD vs. Non-smokers)



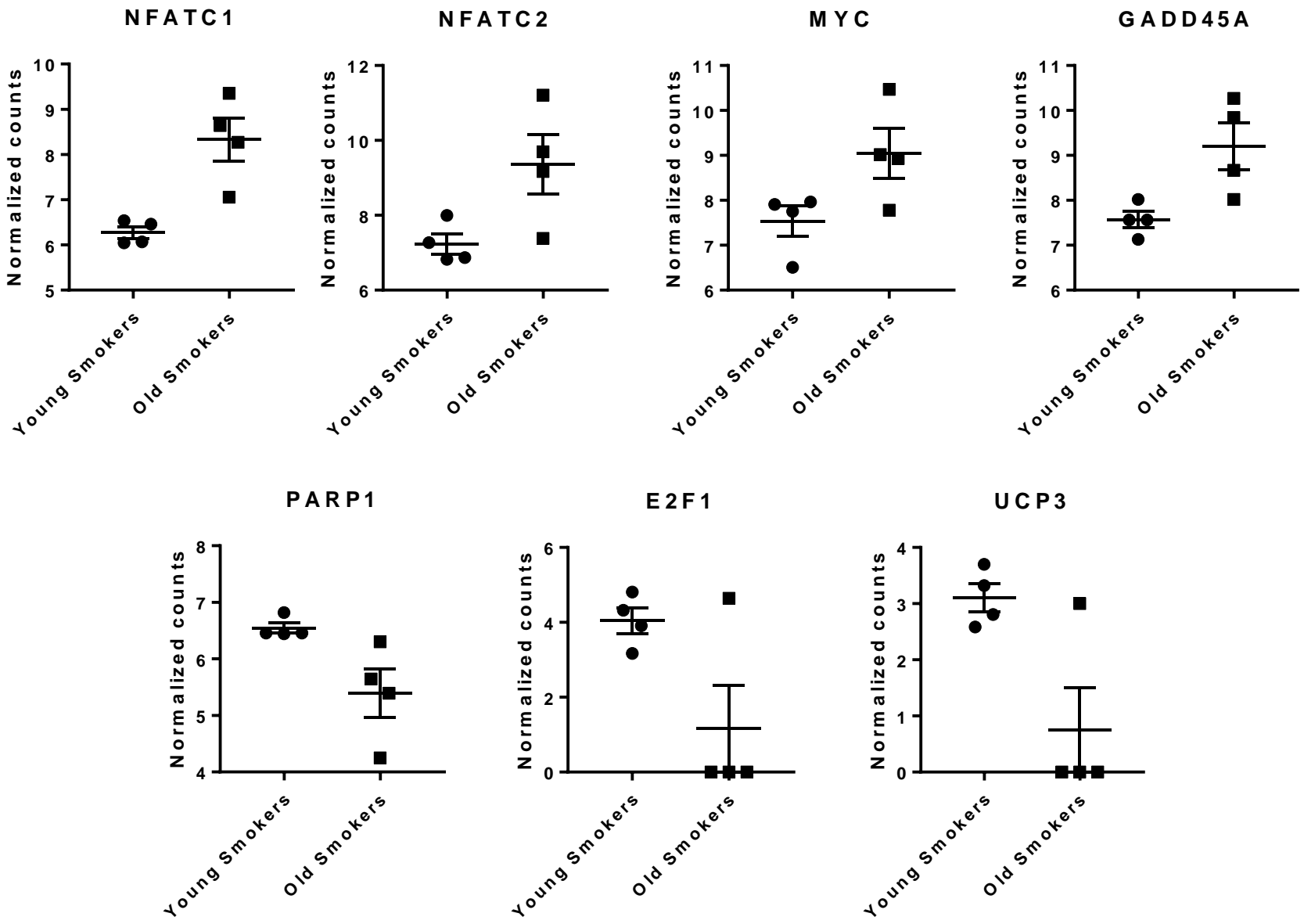
Supplementary figure 4.

Young Non-smokers vs. Old Non-smokers



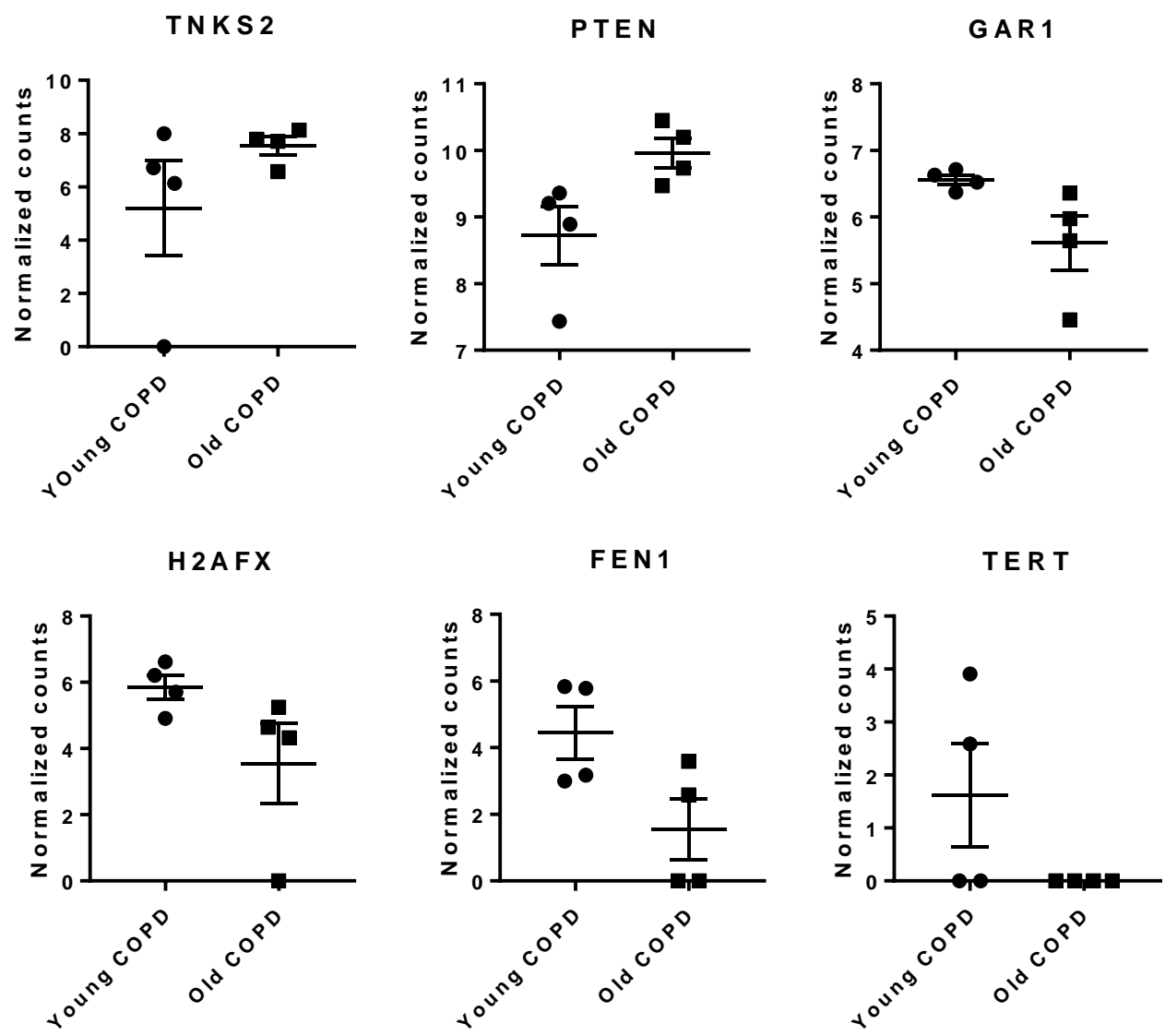
Supplementary figure 5.

Young Smokers vs. Old Smokers



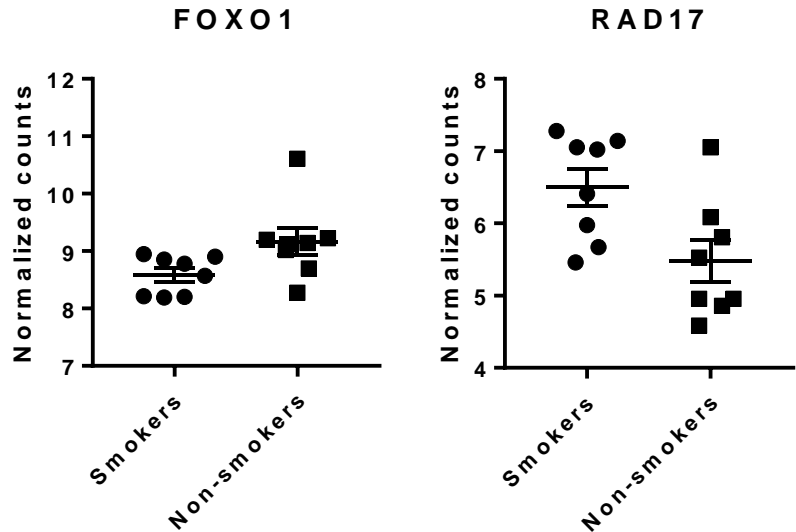
Supplementary figure 6.

Young COPD vs. Old COPD

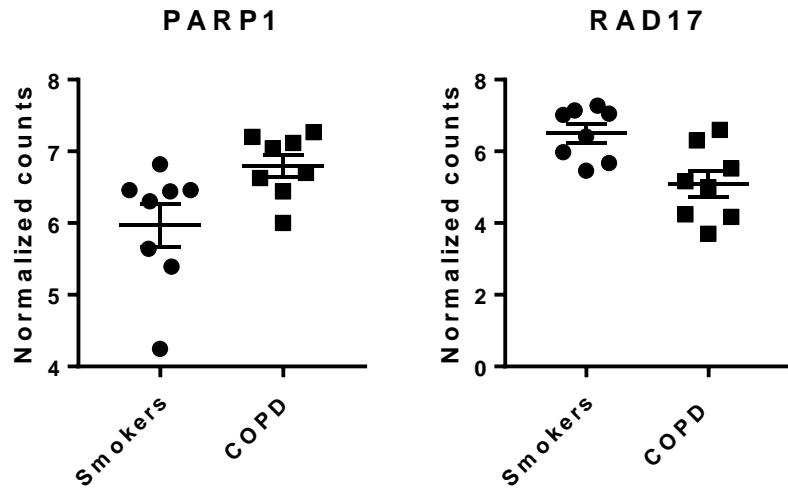


Supplementary figure 7.

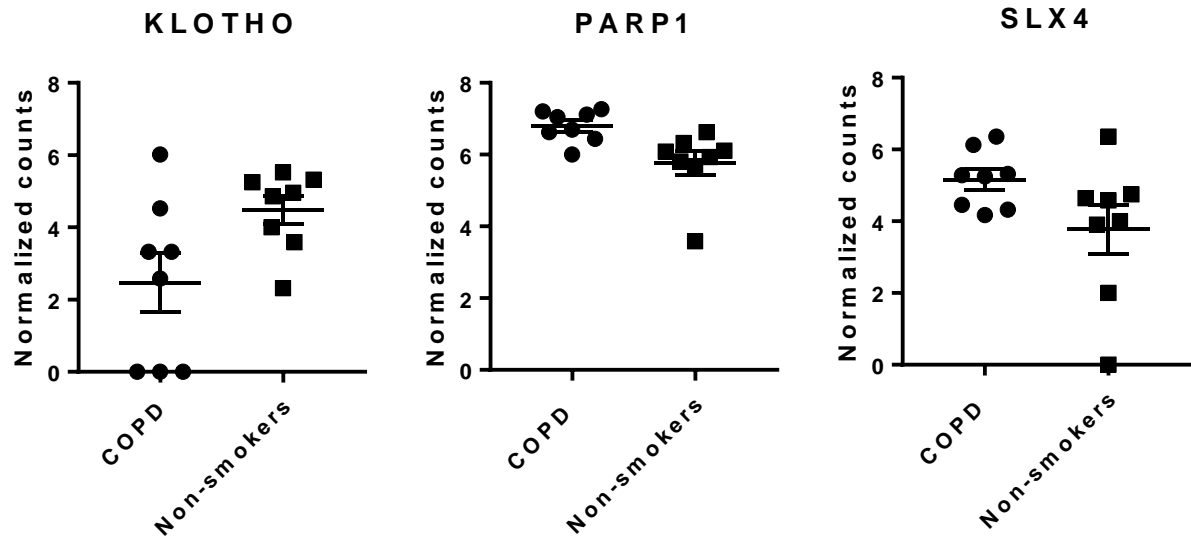
Smokers vs. Non-smokers



Smokers vs. COPD

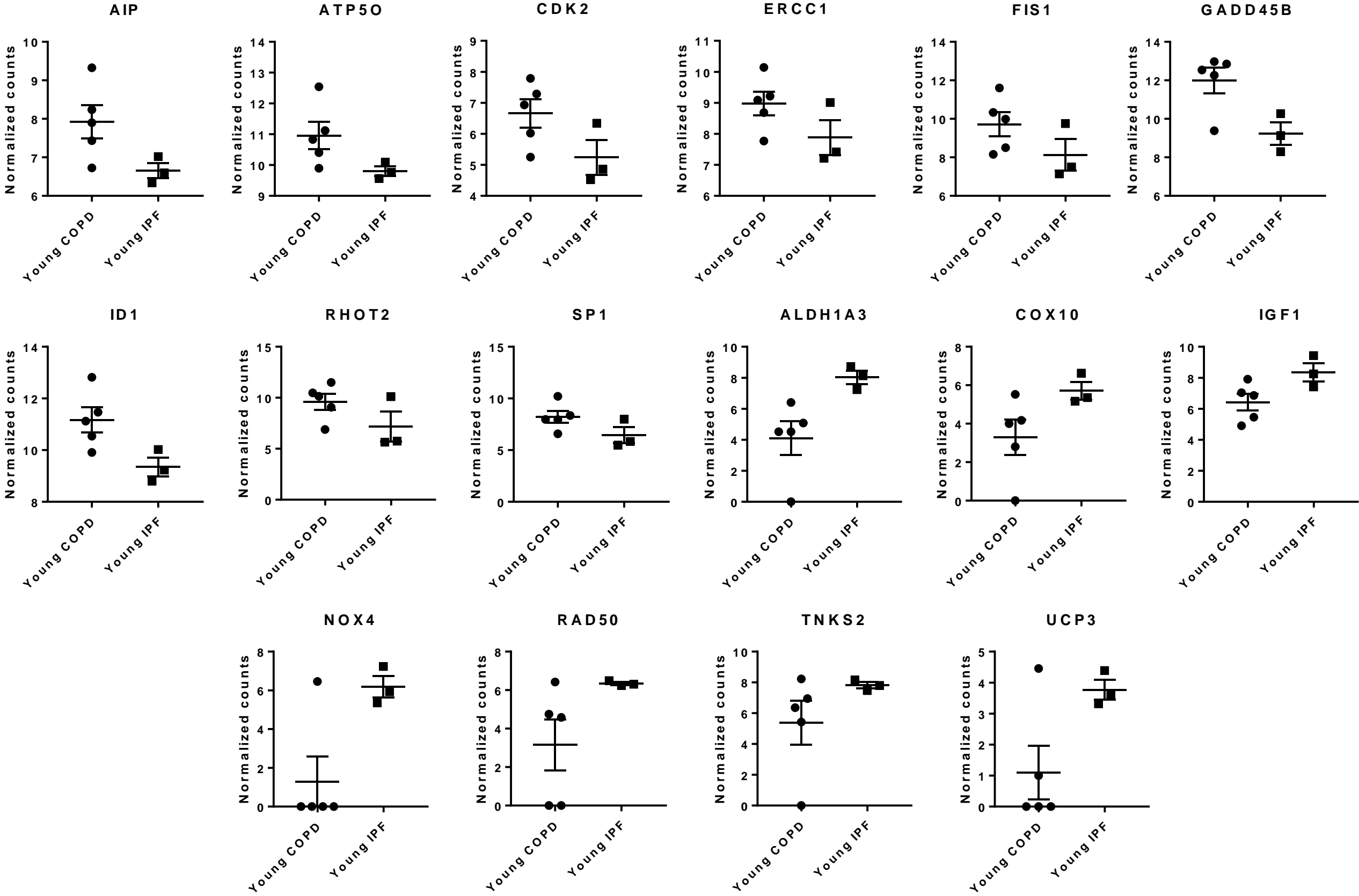


COPD vs. Non-smokers

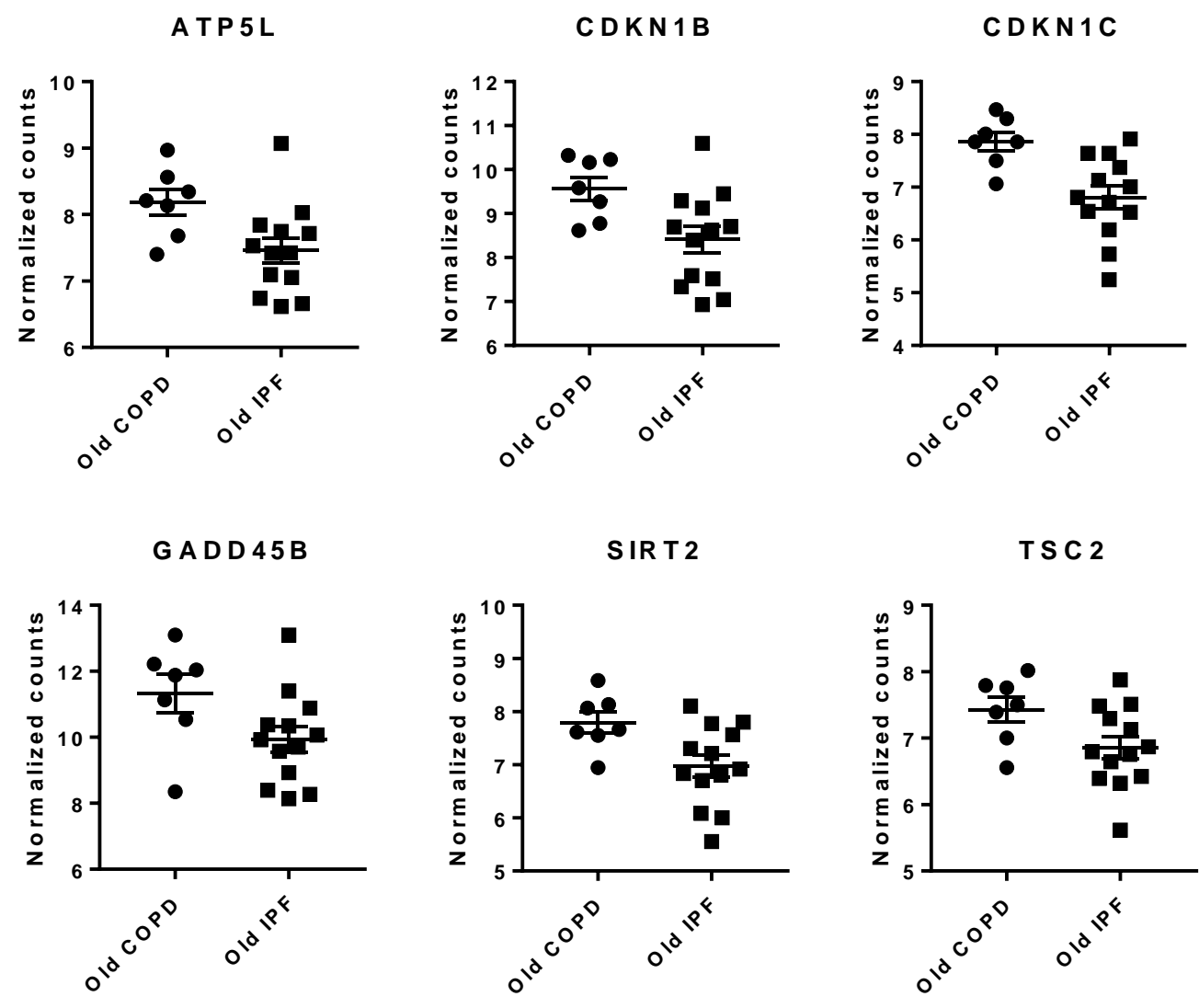


Supplementary figure 8.

Young (COPD vs. IPF)

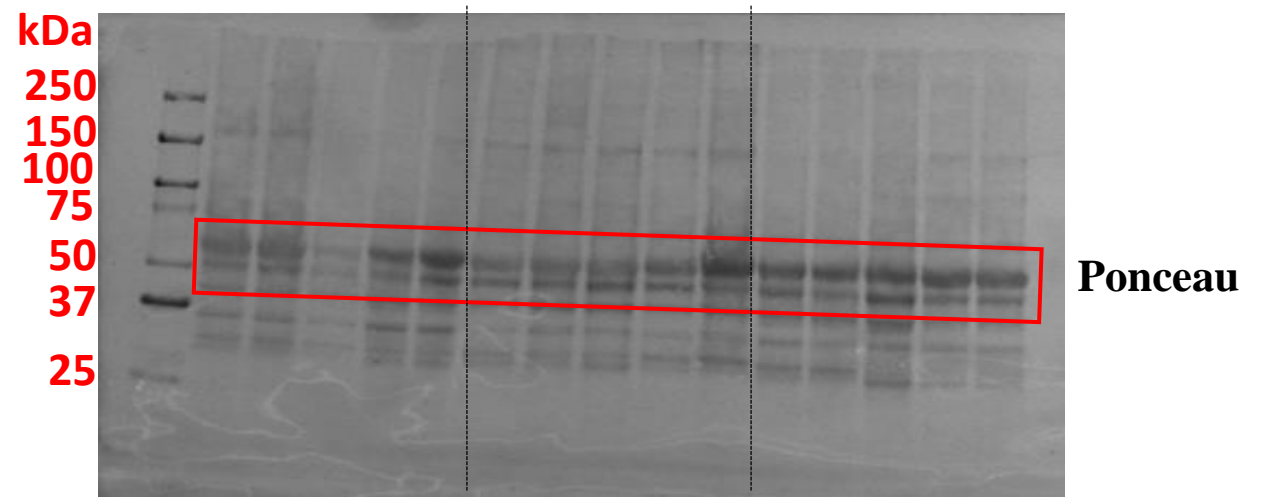
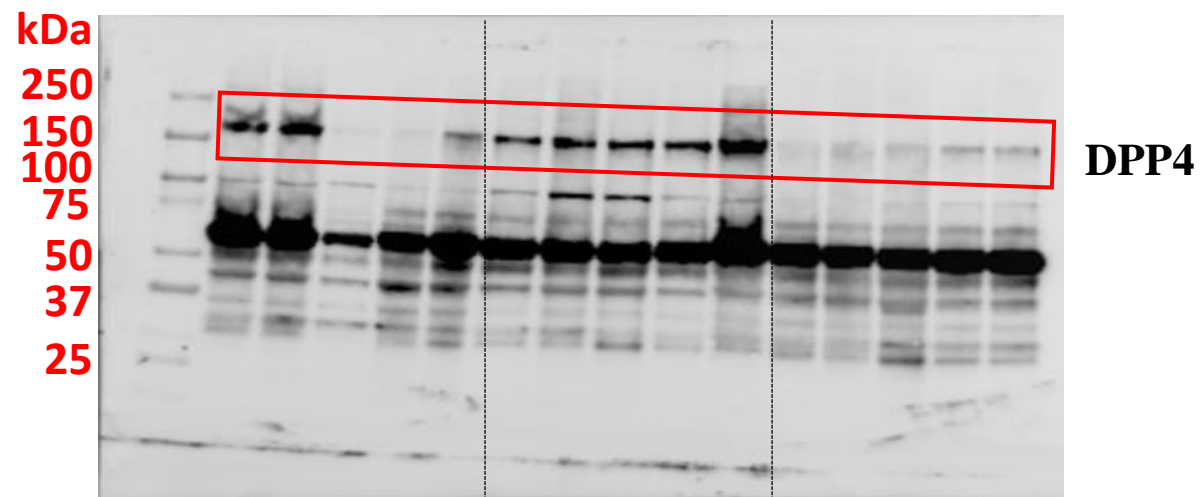
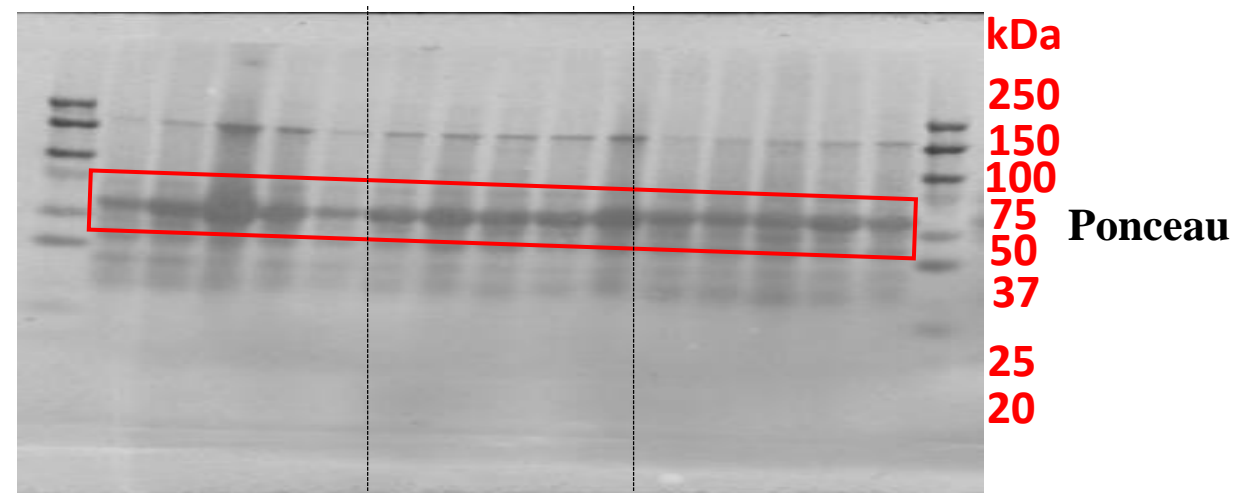
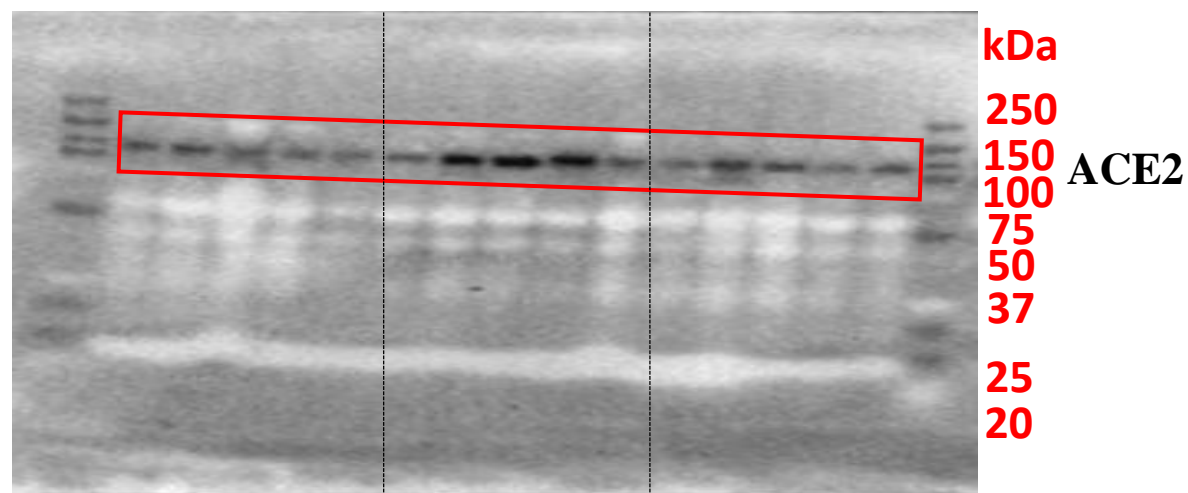
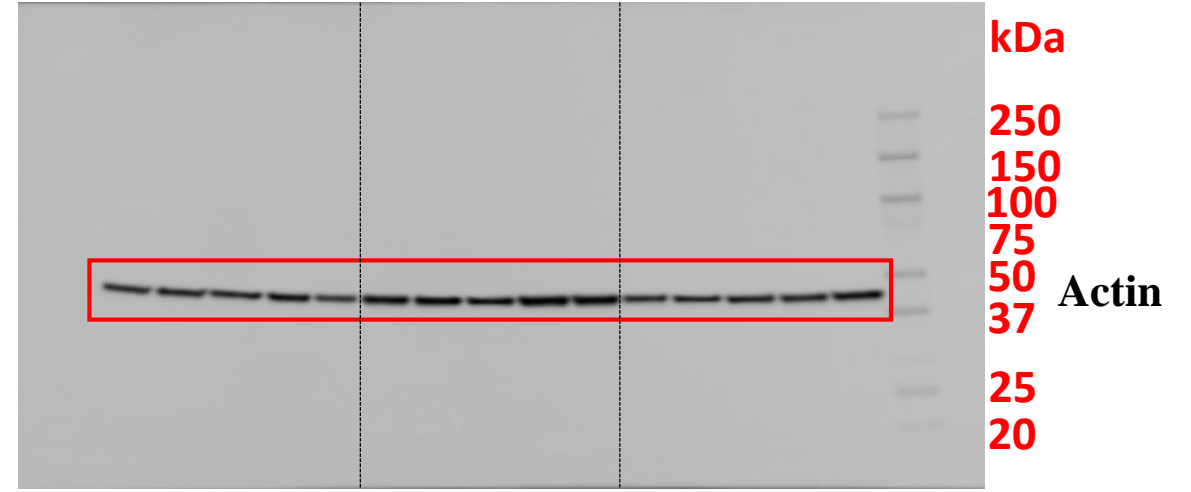
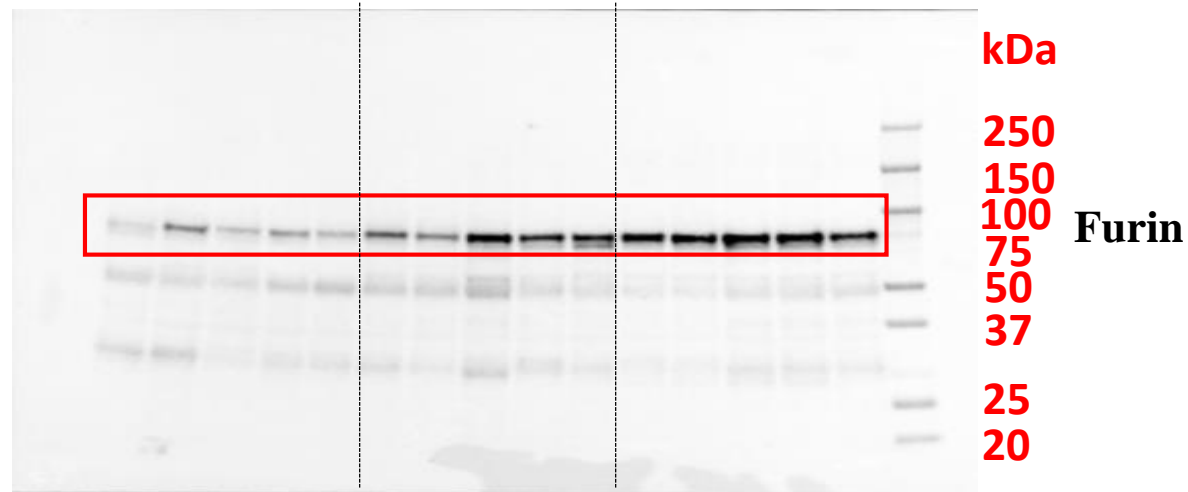
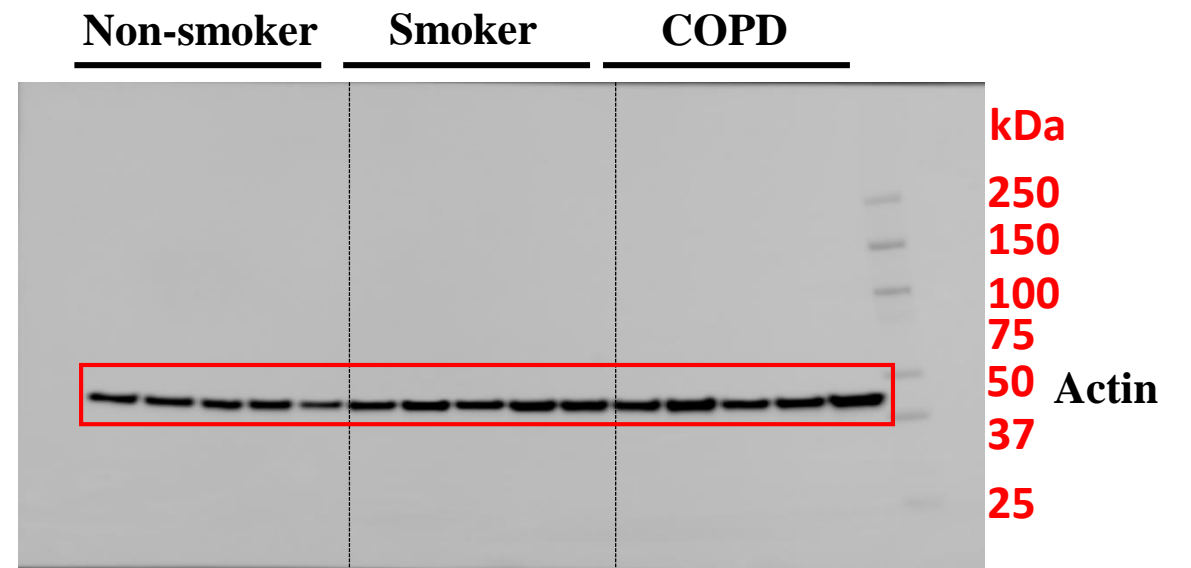
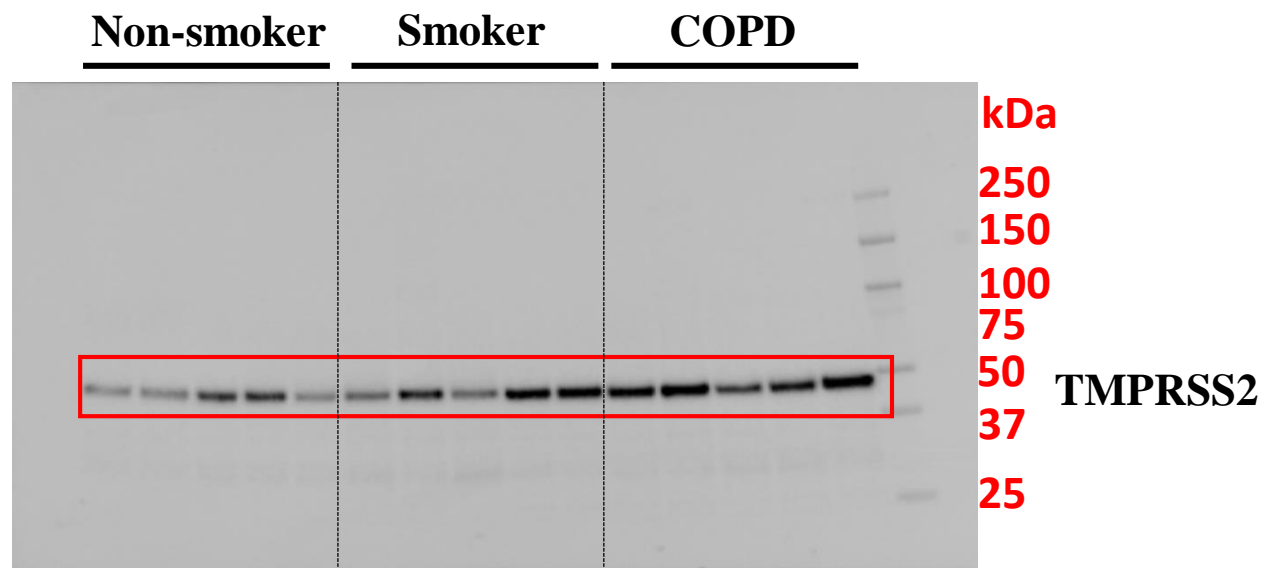


Old (COPD vs. IPF)



Supplementary Figure 10.

Full unedited gels/blots for Fig. 10 (original and unprocessed)



Supplementary Figure 11.

Full unedited gels/blots for Fig. 11 (original and unprocessed)

