

SUPPORTING INFORMATION

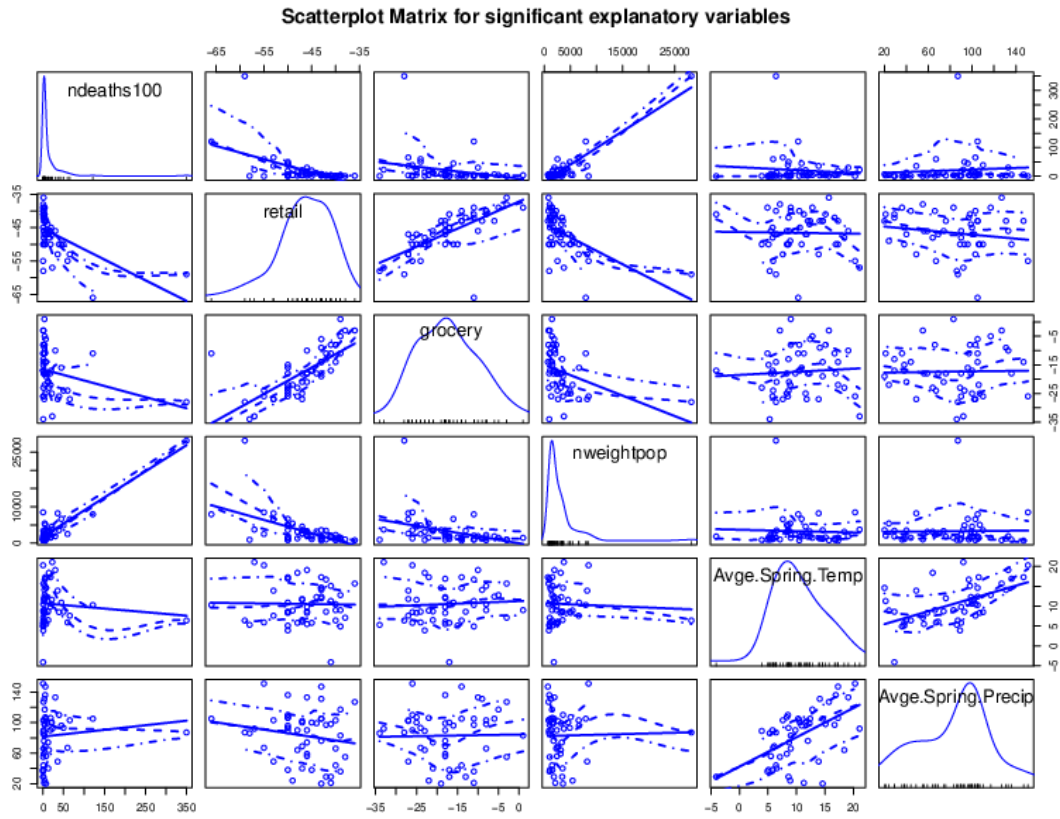


Fig. S1. **Scatterplot matrix of five significant explanatory variables for the number of deaths per 100,000 in each state.** Panels show: Number of deaths per 100,000, retail mobility index, grocery mobility index, PWD, average spring temperature, and average spring precipitation. Data are shown by the circles, regression lines are solid, smoothed mean values are shown by the dashed line, and variances are shown by the dashed-dotted lines.

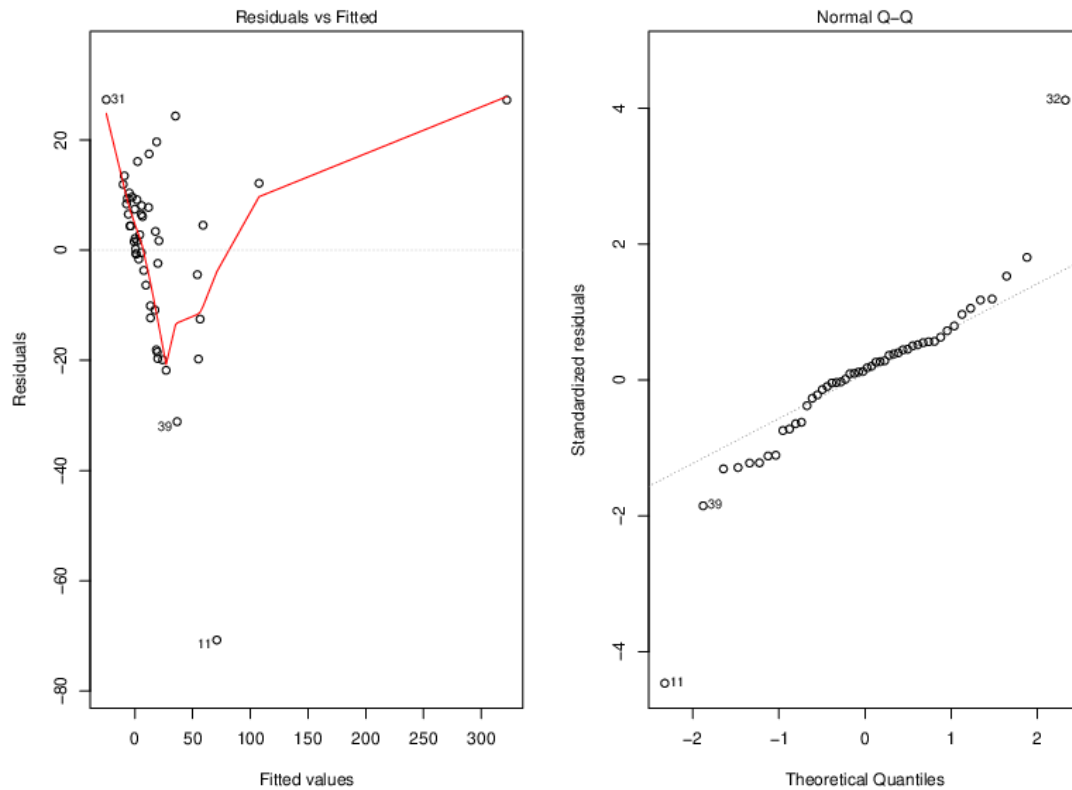


Fig. S2. (Left) **Residuals versus fitted values.** (Right) **Q-Q plot of standardized residuals.** Used as a diagnostic, the residuals versus fitted plot should be approximately random, while the Q-Q plot (a normal probability plot) should be approximately straight if the errors are distributed normally.

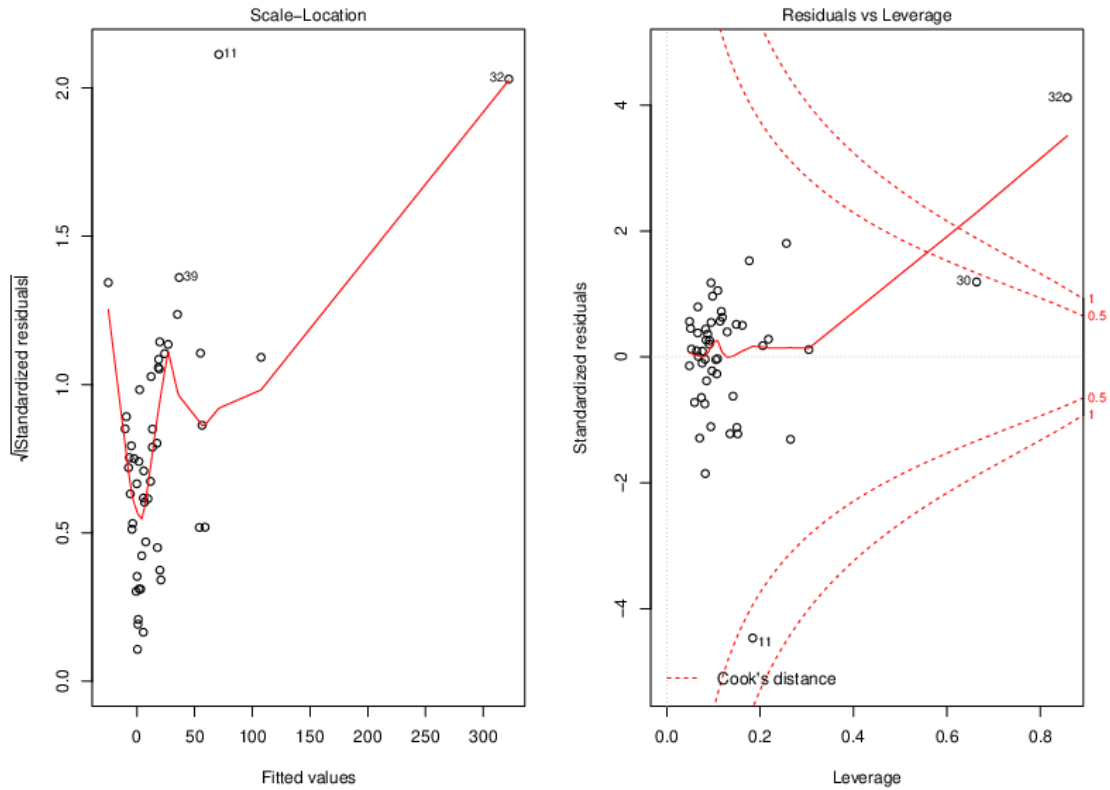


Fig. S3. **(Left) Scale-location. (Right) Residuals versus leverage.** As a diagnostic, the points in the scale-location plot should be distributed randomly, while the last residuals versus leverage suggests which point have the greatest influence on the model. See text for more details on interpretation.

Table S1. Summary of multiple-regression analysis on 28 explanatory variables described in Table 1.

	<i>Dependent variable:</i>
	ndeaths100
retail	−2.545*** (0.870)
grocery	0.842 (0.579)
parks	0.085 (0.097)
transit	0.665 (0.587)
workplaces	−0.505 (0.930)
residential	−1.852 (4.689)
age	−2.736 (4.279)
low.indust.toxins	−0.146 (0.310)
low.pollution.health.risk	0.056 (0.262)
Chron.Low.Resp.Death.Rate	0.639 (0.545)
age.65.years.and.over	2.218 (4.373)
Race.param.1	1.405 (1.181)
Race.param.2	0.286 (1.538)
Race.param.3	0.292 (0.553)
Race.param.4	0.641 (1.011)
Obesity.Rates	0.137 (1.373)
Average.Relative.Humidity	−0.413 (0.435)

Table S2. Summary of the five most significant explanatory variables for predicting the number of deaths per 100,000 in each state.

	<i>Dependent variable:</i>
	ndeaths100
retail	-1.625** (0.750)
grocery	1.382*** (0.507)
PWD	0.011*** (0.001)
Avge.Spring.Temp	-1.438** (0.683)
Avge.Spring.Precip	0.172* (0.102)
Constant	-67.055** (27.940)
Observations	50
R ²	0.875
Adjusted R ²	0.861
Residual Std. Error	19.544 (df = 44)
F Statistic	61.753*** (df = 5; 44)
<i>Note:</i>	*p<0.1; **p<0.05; ***p<0.01

Table S3. step-wise regression using the MASS package.

	<i>Dependent variable:</i>
	ndeaths100
retail	−2.389*** (0.502)
grocery	0.814** (0.348)
parks	0.107 (0.065)
transit	0.765** (0.306)
Chron.Low.Resp.Death.Rate	0.570** (0.272)
Race.param.1	0.986*** (0.284)
Race.param.4	0.460* (0.228)
Average.Relative.Humidity	−0.505** (0.222)
Average.Annual.Temperature..C.	−2.110*** (0.670)
Average.Annual.Precipitation.mm	0.096*** (0.022)
State.of.emergency.declared	0.828 (0.504)
Avge.Spring.Precip	−0.901*** (0.232)
UV.Index	2.208** (0.977)
PWD	0.012*** (0.001)
dateDeath1	−0.692** (0.318)
Constant	12,564.970** (5,852.469)
Observations	50
R ²	0.271

Table S4. Random Forest Method for relative importance of parameters.

Parameter	Overall
retail	6.70932241
grocery	1.65334776
parks	0.40933968
transit	-1.05140388
workplaces	-1.63133731
residential	3.44869838
age	0.44395140
low.indust.toxins	0.94348756
low.pollution.health.risk	-1.89831370
Chron.Low.Resp.Death.Rate	5.42687854
age.65.years.and.over	-1.76708823
Race.param.1	1.61188454
Race.param.2	1.29263755
Race.param.3	2.82938257
Race.param.4	0.98131658
Obesity.Rates	2.08230701
Average.Relative.Humidity	-0.59747647
Average.Dew.Point	1.72889125
Average.Annual.Temperature..C.	0.06729476
Average.Annual.Precipitation.mm	1.02933029
State.of.emergency.declared	-0.79372186
Avge.Spring.Temp	2.06492880
Avge.Spring.Precip	-1.01229332
relative.humidity.morning	-0.80503322
relative.humidity.afternoon	3.06231970
UV.Index	0.68373784
PWD	7.16775890
dateDeath1	1.48484773

Table S5. Xgboost Method for relative importance of parameters. Top-20 shown.

Parameter	Overall
retail	100.00000
PWD	31.50172
workplaces	11.96575
grocery	9.92375
Race.param.1	3.09216
relative.humidity.afternoon	2.92808
dateDeath1	2.57557
Avge.Spring.Temp	1.85285
Average.Dew.Point	1.39623
Chron.Low.Resp.Death.Rate	1.18016
parks	0.72053
low.pollution.health.risk	0.47567
UV.Index	0.38364
Average.Annual.Precipitation.mm	0.23422
transit	0.22316
age.65.years.and.over	0.14004
relative.humidity.morning	0.13864
Race.param.4	0.13657
Race.param.2	0.10647
low.indust.toxins	0.08646

Table S6. MARS Method for relative importance of parameters.

Parameter	nsubsets	gcv	rss
PWD	6	100.0	100.0
Race.param.2	5	29.0	31.3
retail	4	20.4	22.8
grocery	3	10.9	14.8
Average.Annual.Precipitation.mm	1	4.5	7.4

Table S7. Step-wise Regression Method for relative importance of parameters.

Parameter	Df	Sum of Sq	RSS	AIC
none		16807	302.88	
Avge.Spring.Precip	1	1088	17895	304.01
Avge.Spring.Temp	1	1694	18501	305.68
retail	1	1795	18603	305.95
grocery	1	2842	19649	308.69
PWD	1	72961	89768	384.65

Table S8. Step-wise Regression Method for relative importance of parameters.

No.	variable	mean dropout loss	label
1	full model	614479.0	randomForest
2	State	614479.0	randomForest
3	ndeaths100	614479.0	randomForest
4	relative.humidity.morning	617600.1	randomForest
5	low.indust.toxins	618002.4	randomForest
6	Obesity.Rates	618421.8	randomForest
7	Average.Annual.Precipitation.mm	619321.7	randomForest
8	UV.Index	620157.1	randomForest
9	age.65.years.and.over	620374.4	randomForest
10	age	622894.6	randomForest
11	low.pollution.health.risk	623242.5	randomForest
12	Avge.Spring.Precip	623606.0	randomForest
13	State.of.emergency.declared	625839.0	randomForest
14	Race.param.3	626778.1	randomForest
15	parks	628155.8	randomForest
16	Race.param.4	629312.3	randomForest
17	Avge.Spring.Temp	629676.5	randomForest
18	Average.Annual.Temperature..C.	633470.7	randomForest
19	Average.Dew.Point	637143.8	randomForest
20	dateDeath1	639675.7	randomForest
21	relative.humidity.afternoon	640153.5	randomForest
22	transit	643169.1	randomForest
23	Race.param.2	646339.4	randomForest
24	residential	649959.4	randomForest
25	Race.param.1	654734.9	randomForest
26	grocery	669505.6	randomForest
27	Average.Relative.Humidity	742232.9	randomForest
28	Chron.Low.Resp.Death.Rate	773875.2	randomForest
29	workplaces	778847.0	randomForest
30	retail	948946.8	randomForest
31	PWD	1084427.7	randomForest
32	baseline	3952434.6	randomForest