
SUPPLEMENTARY MATERIAL
MODELING THE IMPACT OF RELAXATION ASSUMING A
PROLONGED VIRAL SHEDDING FOR COVID-19

A PREPRINT

Burcu Tepekule

Department of Infectious Diseases
and Hospital Epidemiology
University Hospital Zurich, University of Zurich
Zurich, Switzerland
burcu.tepekule@usz.ch

Anthony Hauser

Institute of Social and Preventive Medicine
University of Bern
Bern, Switzerland
anthony.hauser@ispm.unibe.ch

Viacheslav N. Kachalov

Department of Infectious Diseases
and Hospital Epidemiology
University Hospital Zurich, University of Zurich
Zurich, Switzerland
viacheslav.kachalov@usz.ch

Sara Andresen

Department of Infectious Diseases
and Hospital Epidemiology
University Hospital Zurich, University of Zurich
Zurich, Switzerland
sara.andresen@uzh.ch

Thomas Scheier

Department of Infectious Diseases
and Hospital Hygiene
University Hospital Zurich
Zurich, Switzerland
thomas.scheier@usz.ch

Peter W. Schreiber

Department of Infectious Diseases
and Hospital Epidemiology
University Hospital Zurich, University of Zurich
Zurich, Switzerland
peterwerner.schreiber@usz.ch

Huldrych F. Günthard

Department of Infectious Diseases
and Hospital Epidemiology
University Hospital Zurich
Zurich, Switzerland
huldrych.guenthard@usz.ch

Roger D. Kouyos

Department of Infectious Diseases
and Hospital Epidemiology
University Hospital Zurich, University of Zurich
Zurich, Switzerland
roger.kouyos@usz.ch

June 12, 2020

1 Possibility of a chronically infectious population : additional results

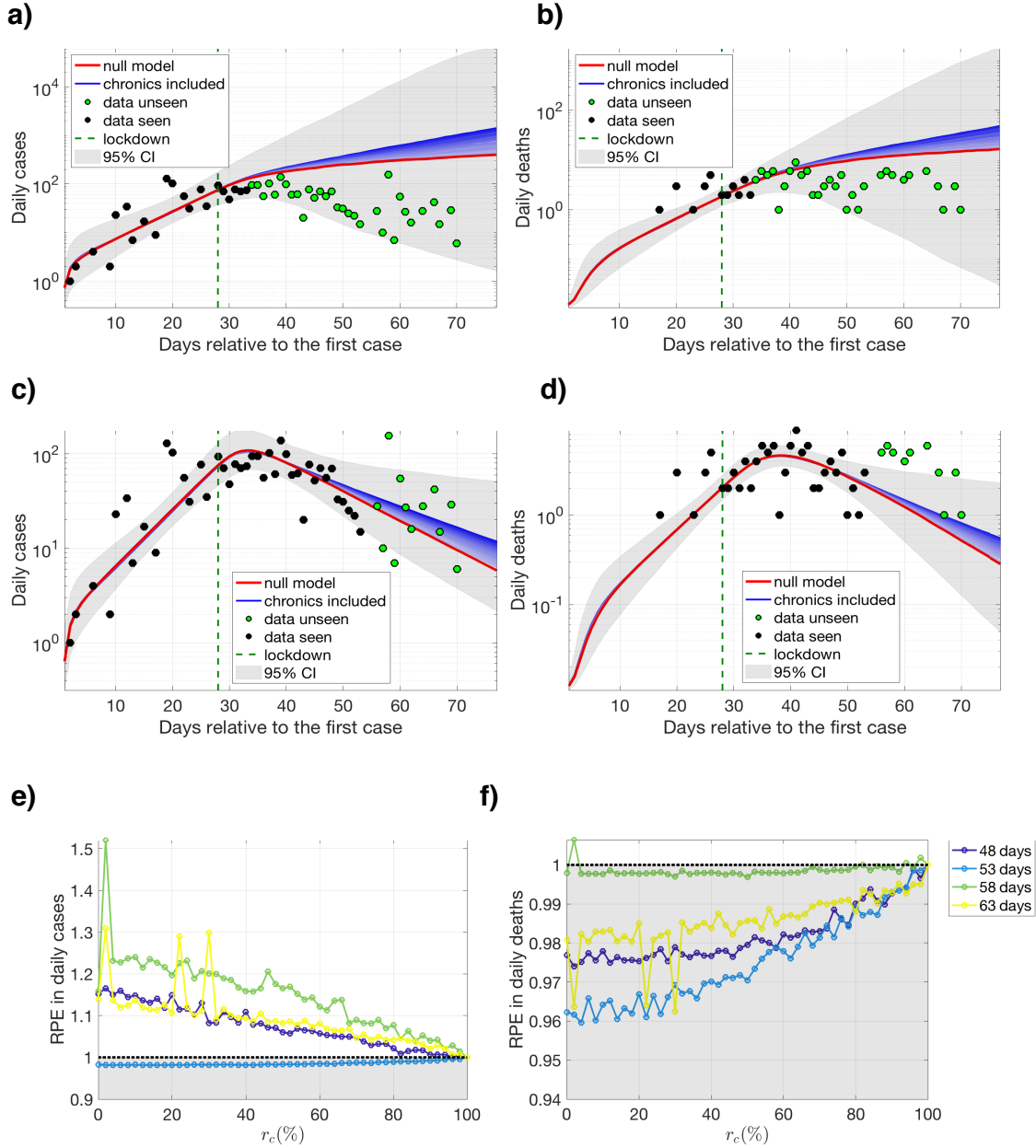


Figure 1: Fitting, prediction, and relative prediction error (RPE) results for Greece, calculated using different levels of infectiousness for the chronically infectious class and different sizes of datasets. Model outcomes for the number of daily confirmed cases (a, c) and daily deaths (b, d) where fitting is done using an additional 5 and 30 days of observed data, respectively. Predictions drawn in darker shades of blue represent the fitting results with increased infectiousness of the chronically infectious class, i.e., lower r_c values, and the predictions for the null model ($r_c = 100\%$) are drawn in red. Data points that are used for fitting are drawn in black whereas the datapoints that are excluded from fitting but used for prediction error calculations are drawn in green. Gray areas around the model outcomes represent the union of the confidence intervals calculated for different levels of infectiousness. Relative prediction error (RPE) e) for the number of daily cases and f) the number of daily deaths for a given r_c value and a given dataset size used for fitting, where $r_c = 100\%$ represents the results for the null model, and values below 1 are shaded in gray for a better visualization.

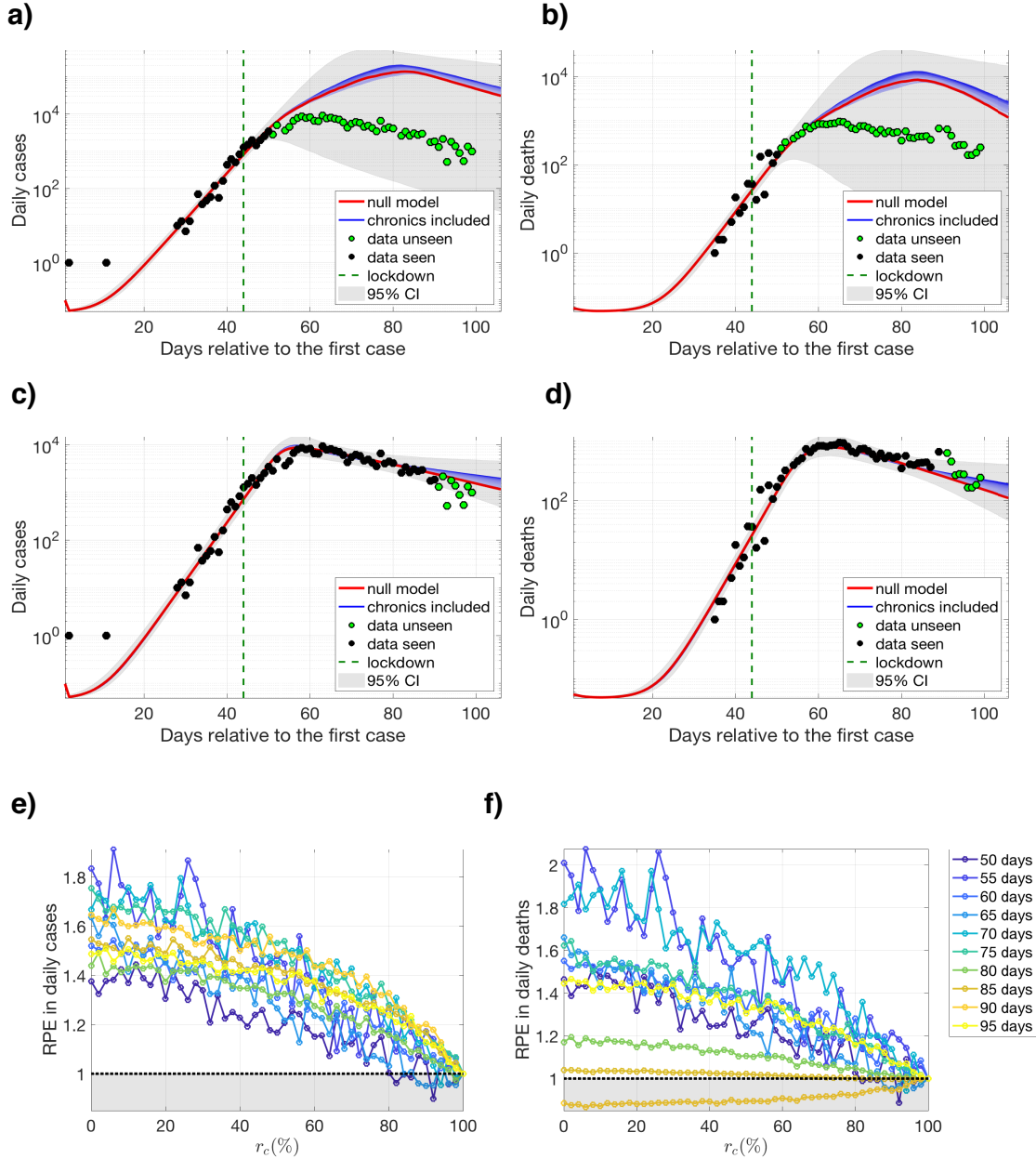


Figure 2: Fitting, prediction, and relative prediction error (RPE) results for Spain, calculated using different levels of infectiousness for the chronically infectious class and different sizes of datasets. Model outcomes for the number of daily confirmed cases (a, c) and daily deaths (b, d) where fitting is done using an additional 5 and 30 days of observed data, respectively. Predictions drawn in darker shades of blue represent the fitting results with increased infectiousness of the chronically infectious class, i.e., lower r_c values, and the predictions for the null model ($r_c = 100\%$) are drawn in red. Data points that are used for fitting are drawn in black whereas the datapoints that are excluded from fitting but used for prediction error calculations are drawn in green. Gray areas around the model outcomes represent the union of the confidence intervals calculated for different levels of infectiousness. Relative prediction error (RPE) (e) for the number of daily cases and (f) the number of daily deaths for a given r_c value and a given dataset size used for fitting, where $r_c = 100\%$ represents the results for the null model, and values below 1 are shaded in gray for a better visualization.

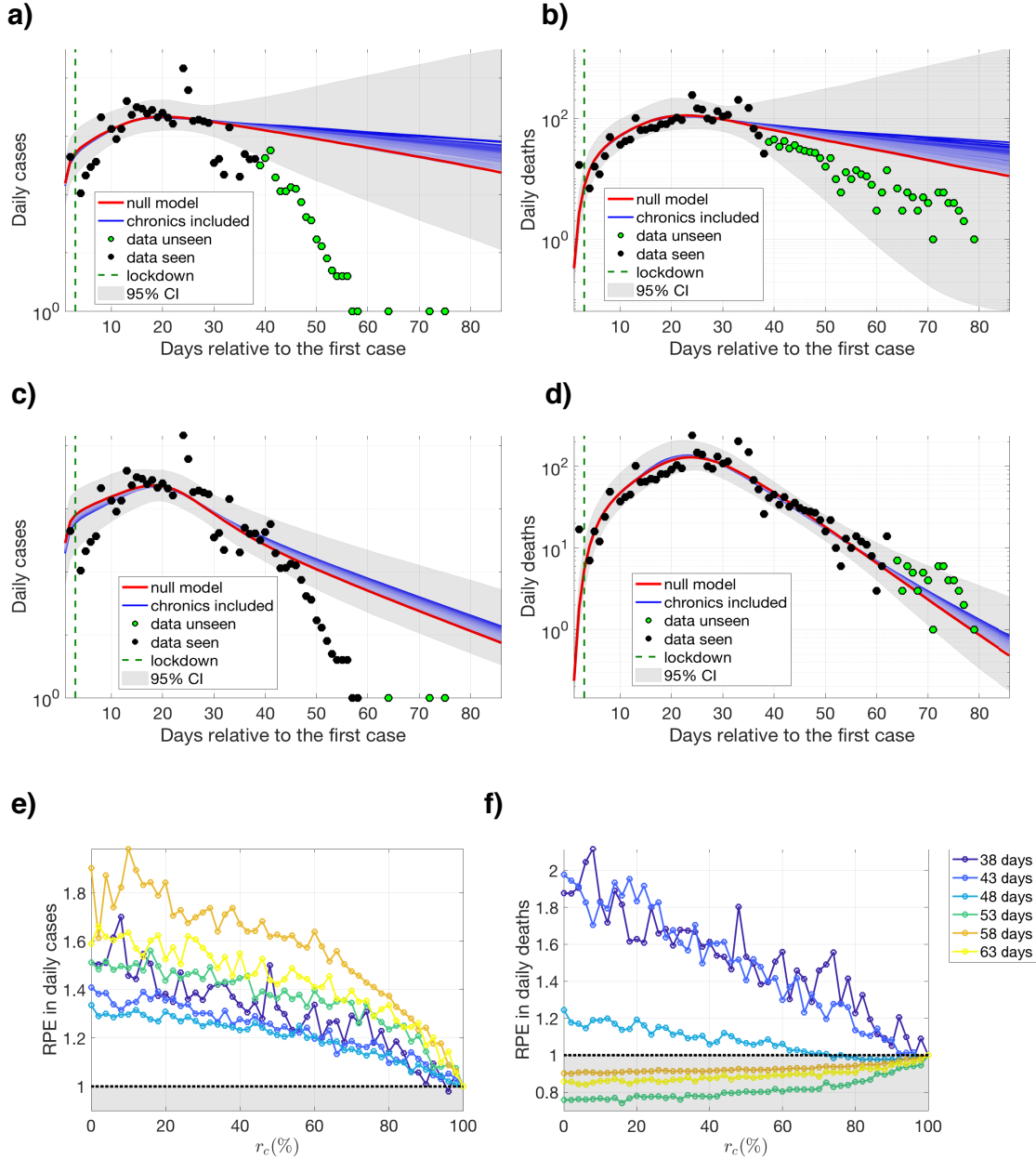


Figure 3: Fitting, prediction, and relative prediction error (RPE) results for Hubei, calculated using different levels of infectiousness for the chronically infectious class and different sizes of datasets. Model outcomes for the number of daily confirmed cases (a, c) and daily deaths (b, d) where fitting is done using an additional 35 and 60 days of observed data, respectively. Predictions drawn in darker shades of blue represent the fitting results with increased infectiousness of the chronically infectious class, i.e., lower r_c values, and the predictions for the null model ($r_c = 100\%$) are drawn in red. Data points that are used for fitting are drawn in black whereas the datapoints that are excluded from fitting but used for prediction error calculations are drawn in green. Gray areas around the model outcomes represent the union of the confidence intervals calculated for different levels of infectiousness. Relative prediction error (RPE) e) for the number of daily cases and f) the number of daily deaths for a given r_c value and a given dataset size used for fitting, where $r_c = 100\%$ represents the results for the null model, and values below 1 are shaded in gray for a better visualization.

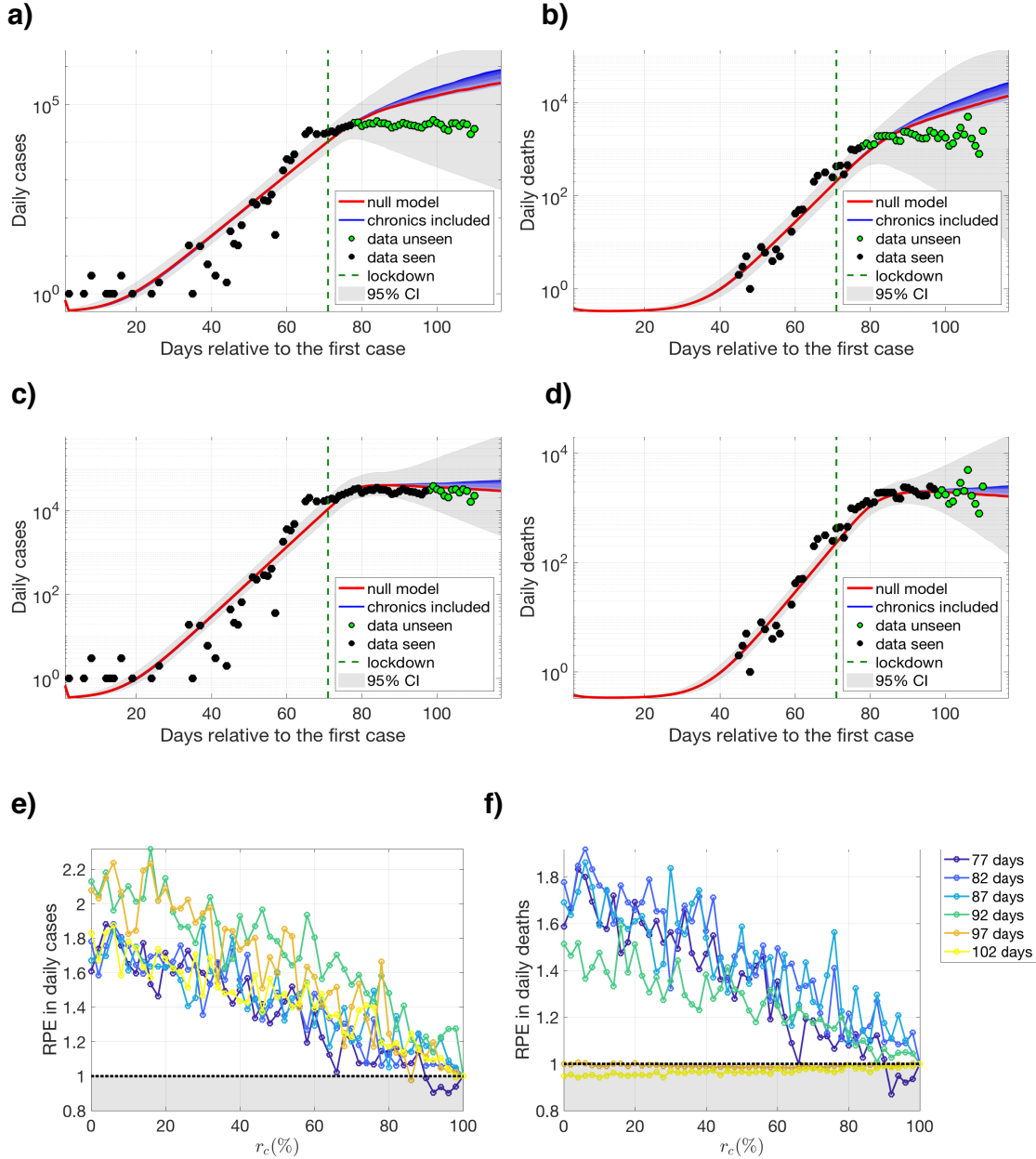


Figure 4: Fitting, prediction, and relative prediction error (RPE) results for the U.S.A, calculated using different levels of infectiousness for the chronically infectious class and different sizes of datasets. Model outcomes for the number of daily confirmed cases (a, c) and daily deaths (b, d) where fitting is done using an additional 5 and 30 days of observed data, respectively. Predictions drawn in darker shades of blue represent the fitting results with increased infectiousness of the chronically infectious class, i.e., lower r_c values, and the predictions for the null model ($r_c = 100\%$) are drawn in red. Data points that are used for fitting are drawn in black whereas the datapoints that are excluded from fitting but used for prediction error calculations are drawn in green. Gray areas around the model outcomes represent the union of the confidence intervals calculated for different levels of infectiousness. Relative prediction error (RPE) e) for the number of daily cases and f) the number of daily deaths for a given r_c value and a given dataset size used for fitting, where $r_c = 100\%$ represents the results for the null model, and values below 1 are shaded in gray for a better visualization.

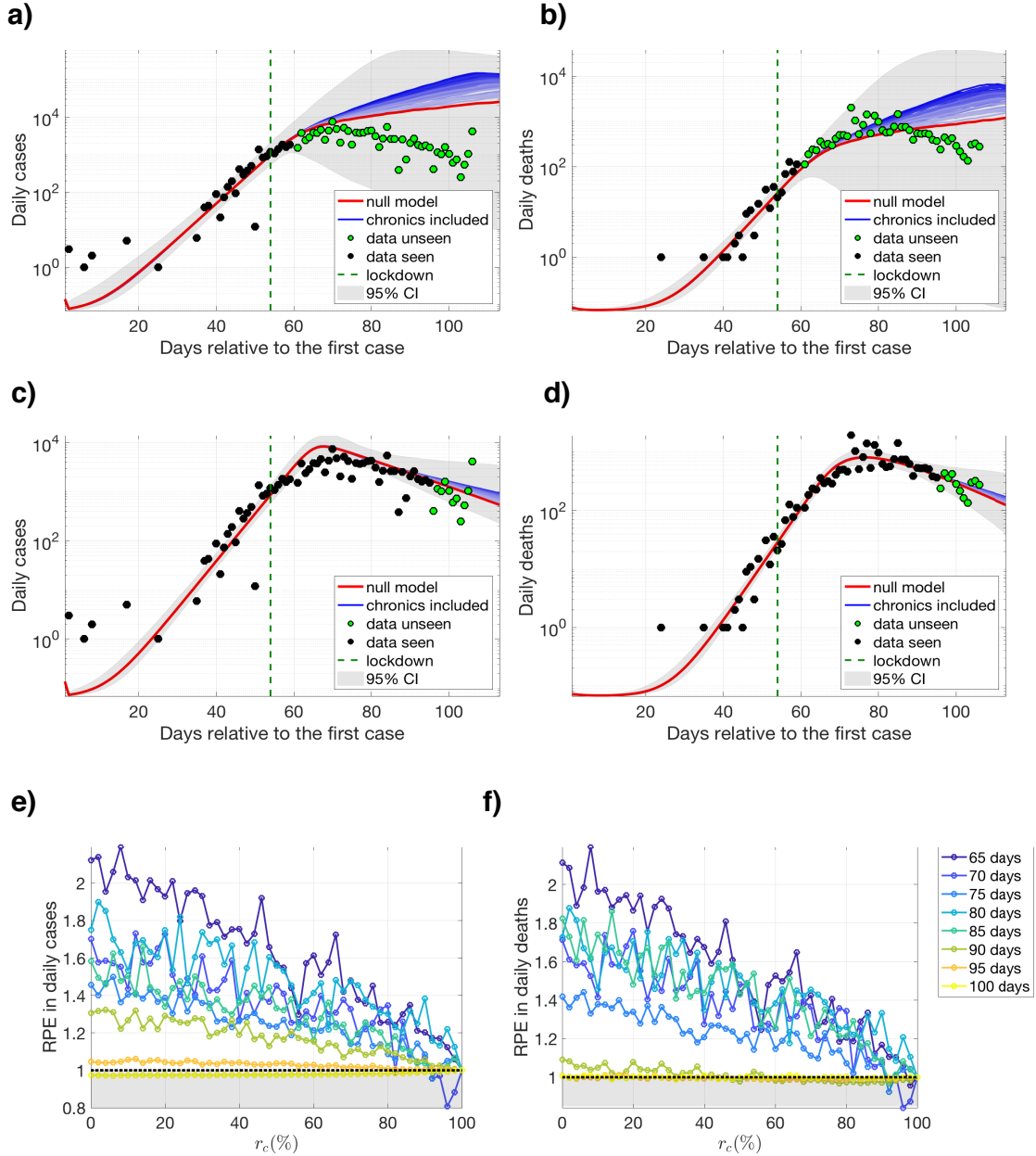


Figure 5: Fitting, prediction, and relative prediction error (RPE) results for France, calculated using different levels of infectiousness for the chronically infectious class and different sizes of datasets. Model outcomes for the number of daily confirmed cases (a, c) and daily deaths (b, d) where fitting is done using an additional 5 and 30 days of observed data, respectively. Predictions drawn in darker shades of blue represent the fitting results with increased infectiousness of the chronically infectious class, i.e., lower r_c values, and the predictions for the null model ($r_c = 100\%$) are drawn in red. Data points that are used for fitting are drawn in black whereas the datapoints that are excluded from fitting but used for prediction error calculations are drawn in green. Gray areas around the model outcomes represent the union of the confidence intervals calculated for different levels of infectiousness. Relative prediction error (RPE) (e) for the number of daily cases and (f) the number of daily deaths for a given r_c value and a given dataset size used for fitting, where $r_c = 100\%$ represents the results for the null model, and values below 1 are shaded in gray for a better visualization.

2 Results for the chronic-free model

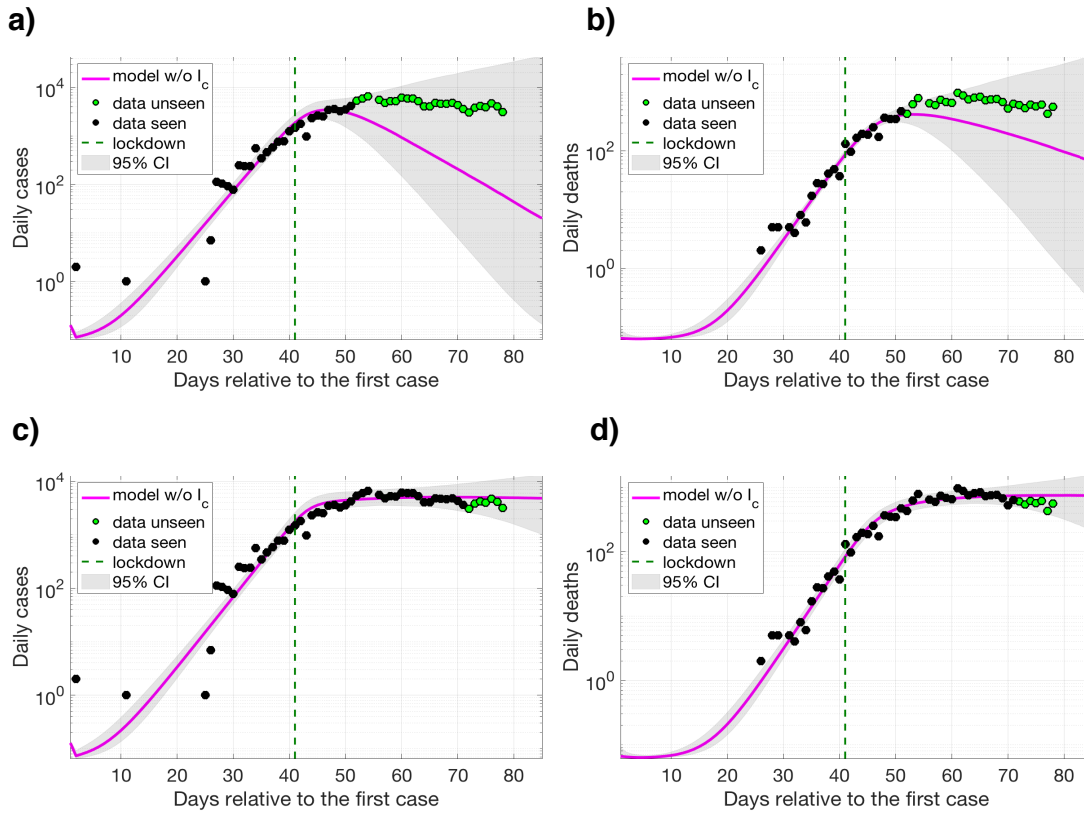


Figure 6: Fitting and prediction results for Italy, calculated using the chronic-free model (model w/o I_c) for different sizes of datasets. Model outcomes for the number of daily confirmed cases (**a**, **c**) and daily deaths (**b**, **d**) where fitting is done using an additional 10 and 30 days of observed data, respectively. Data points that are used for fitting are drawn in black whereas the datapoints that are excluded from fitting but used for prediction error calculations are drawn in green. Gray areas around the model outcomes represent the confidence intervals calculated for the model output.

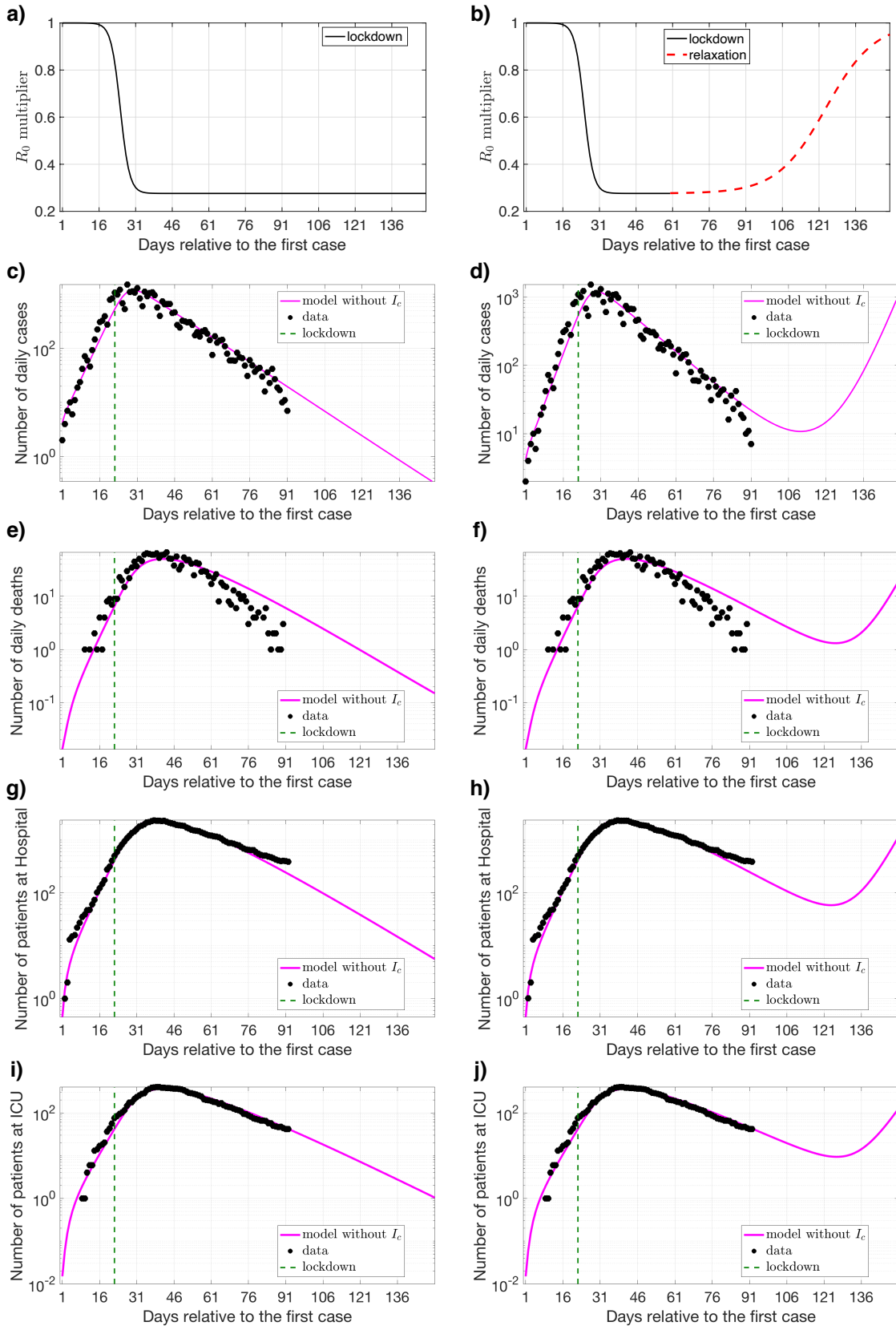


Figure 7: Fitting results and predictions for Switzerland, calculated using the chronic-free model (model w/o I_c), (a), (c), (e), (g), and (i)) assuming the lockdown measures continue, and (b), (d), (f), (h), and (j)) assuming a gradual easing on the lockdown measures (relaxation). Time dependent effects of the lockdown and the relaxation are illustrated in (a) and (b), respectively.

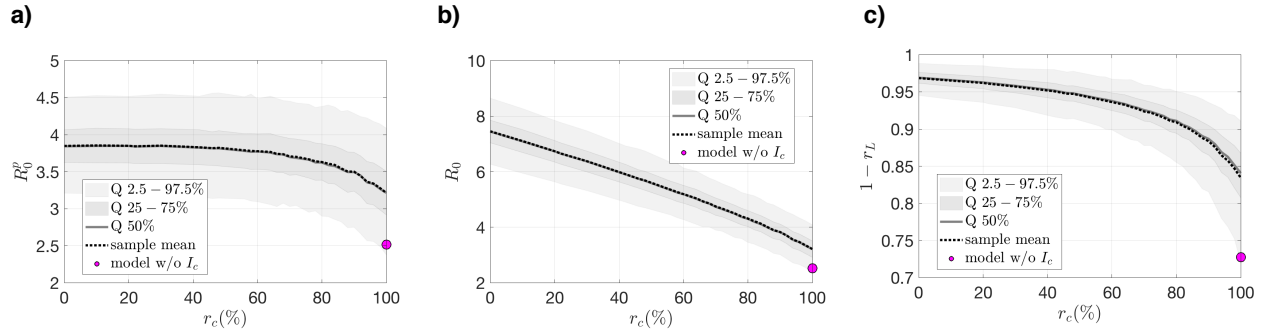


Figure 8: Posterior distributions of the **a)** basic reproduction number of the primarily infectious population (R_0^p), **b)** total basic reproduction number ($R_0 = R_0^p + (1 - \epsilon_H)R_0^c$), and **c)** the final reduction in infectiousness due to lockdown ($1 - r_L$), for a given r_c value for the models with prolonged viral shedding, **where the sample mean of the results for the chronic-free model (model w/o I_c) are included on top (violet circle) for comparison.** Note that both the basic reproduction number and the lockdown effect are estimated to be substantially lower when the I_c compartment is removed from the model compared to the model including prolonged viral shedding with $r_c = 100\%$.