

Supplementary Material

1.1 Methods

Box S1: Mathematical formulations for estimation of cost of input resources

$$TC_{\text{Testing}} = ((P_{\text{covid-19}} * \rho * \phi_{\text{screening}} * C_{\text{screening}}) + (P_{\text{covid-19}} * \rho * \phi_{\text{confirmatory}} * C_{\text{confirmatory}})) \dots\dots\dots(1)$$

$$TC_{\text{CT}} = (P_{\text{covid-19}} * \rho * C_{\text{CT}}) \dots\dots\dots(2)$$

$$TC_{\text{Iso}} = ((P_{\text{covid-19}} * \rho * \tau_{\text{mild}}) + (P_{\text{covid-19}} * (1-\rho) * \tau_{\text{mild}})) * \pi_{\text{Iso}} * C_{\text{Iso}} \dots\dots\dots(3)$$

$$TC_{\text{ICU}} = ((P_{\text{covid-19}} * \rho * \tau_{\text{severe}}) + (P_{\text{covid-19}} * (1-\rho) * \tau_{\text{severe}})) * \pi_{\text{ICU}} * C_{\text{ICU}} \dots\dots\dots(4)$$

$$TC_{\text{ICU+Vent}} = ((P_{\text{covid-19}} * \rho * \tau_{\text{critical}}) + (P_{\text{covid-19}} * (1-\rho) * \tau_{\text{critical}})) * \pi_{\text{ICU+Vent}} * C_{\text{ICU+Vent}} \dots\dots\dots(5)$$

- TC_{Testing} = Total cost of testing COVID-19 infected population
- TC_{CT} = Total cost of contract tracing
- TC_{Iso} = Total cost of isolating COVID-19 infected mild cases
- TC_{ICU} = Total cost of treatment in ICU for COVID-19 severely infected severe cases
- TC_{ICU+Vent} = Total cost of treatment in ICU with ventilator for COVID-19 critically infected cases
- P_{covid-19} = Total COVID-19 infected population
- ρ = Proportion of COVID-19 infected population diagnosed
- φ_{screening} = Number of screening tests (Rapid test) done to find one positive case of COVID-19
- φ_{confirmatory} = Number of confirmatory tests (RT-PCR) done to find one positive case of COVID-19
- ρτ_{mild} = Proportion of COVID-19 infected cases mild among diagnosed cases
- (1-ρ)τ_{mild} = Proportion of COVID-19 infected cases mild among undiagnosed cases
- ρτ_{severe} = Proportion of COVID-19 infected cases severe among diagnosed cases
- (1-ρ)τ_{severe} = Proportion of COVID-19 infected cases severe among undiagnosed cases
- ρτ_{critical} = Proportion of COVID-19 infected cases critical among diagnosed cases
- (1-ρ)τ_{critical} = Proportion of COVID-19 infected cases critical among undiagnosed cases
- π_{Iso} = Average length of isolation (days)
- π_{ICU} = Average length of stay in ICU (days)
- π_{ICU+Vent} = Average length of stay in ICU with ventilator support (days)
- C_{screening} = Unit cost of screening test
- C_{CT} = Unit cost of contract tracing
- C_{confirmatory} = Unit cost of confirmatory test
- C_{Iso} = Per bed day cost of isolation
- C_{ICU} = Per bed day cost of in ICU
- C_{ICU+Vent} = Per bed day cost of in ICU with ventilator support

Using (1), (2), (3), (4) and (5)

Total cost

- TC = [TC_{Testing} + TC_{CT}] + [TC_{Iso} + TC_{ICU} + TC_{ICU+Vent}]
- TC_{Testing} = Total cost of testing COVID-19 infected cases
- TC_{CT} = Total cost of contact tracing of COVID-19 infected cases
- TC_{Iso} = Total cost of isolating COVID-19 infected mild cases
- TC_{ICU} = Total cost of treatment in ICU for COVID-19 severely infected severe cases
- TC_{ICU+Vent} = Total cost of treatment in ICU with ventilator for COVID-19 critically infected cases

Box S2: Mathematical formulations for SEIR model

Exposed Population

$$dE/dt = E + \{ [\beta * S * (1 - \theta) * (1 - \mu_{(all\ cause)}) * ((I - I_H) * \rho)] + [\beta * S * (1 - \theta) * (1 - \mu_{(all\ cause)}) * ((I - (1 - I_H)) * \rho)] \} - [\phi * E * (1 - \mu_{(all\ cause)})] - (\mu_{(all\ cause)} * E) + (I_{m(t)} * p)$$

Susceptible Population

$$dS/dt = S - [\beta * S * (1 - \mu_{(all\ cause)}) * I] - [S * (1 - \mu_{(all\ cause)})]$$

Infected Population

$$dI/dt = I + \{ [\beta * E * (1 - \mu_{(all\ cause)})] - [\gamma * I * (1 - (\mu_{(disease)} + \mu_{(all\ cause)})] \} - (\mu_{(all\ cause)} * I) - (\mu_{(disease)} * I) + [I_{m(t)} * (1 - p)]$$

Recovered Population

$$dR/dt = R + [\gamma * I * (1 - \mu_{(all\ cause)})] - (\mu_{(all\ cause)} * R)$$

E = Exposed population

S = Susceptible population

I = Infected population

R = Recovered population

β = Probability of effective contact between 2 individuals per cycle

θ = Effectiveness of lockdown

I_H = Proportion of COVID-19 positive detected and hospitalised (or isolated)

ρ = COVID-19 positive cases detection rate

ϕ = Average rate of disease onset per cycle

γ = Average recovery rate per cycle

$\mu_{(all\ cause)}$ = All-cause mortality

$\mu_{(disease)}$ = All-cause mortality

I_m = Newly imported transmissions

p = proportion of imported transmissions in latent period

Box S3: Mathematical formulations for computation of under-reporting factor

As per the methodology given by Lachman A¹¹ to compute the country-specific under-reporting factor for COVID-19 positive cases;

$$\alpha_{TB}(O_{Ti}) = \frac{O_{Ti}}{V_{TB} * D_B}$$

α_{TB} = Adjusted cases

O_{Ti} = Original cases

V_{TB} = Vulnerability factor

D_B = Fixed average death rate of benchmark country (South Korea)

Countries	Reported cases	Adjusted cases	Adjustment Factor
China	80932	702518	8.7
France	3667	7940	2.2
Iran	11364	154853	13.6
Italy	17660	112182	6.4
Spain	5232	13556	2.6
US	2179	6085	2.8
All	121034	997134	8.2
India (Computed)	-	-	5.3

Health System Costing

We estimated the cost of managing the COVID pandemic in India for 3 major groups of activities – testing/diagnostics, contact tracing and management of those detected positive. For the testing, we estimated the number of persons who will be screened using a rapid test as per the latest guidelines by the Indian Council of Medical Research¹, as well as the number of persons who will be tested using confirmatory RT-PCR based test. In order to estimate the number of those who are tested for confirmation, we used the number of persons who will be diagnosed among the total estimated cases in each scenario. The coverage of detection was found to be 18.5% as per our model results in the counterfactual and lockdown scenarios, and 60% in case of intensified public health measures scenario. We further scaled up this number of total cases who will require confirmatory test, based on the specificity of the screening rapid test (90%)², as there will be few false positives from the screening test. We applied the price of confirmatory RT-PCR test, recently set by the Government of India³, for estimating the cost of confirmatory test. In order to estimate the cost of screening, we assumed that a total of 25 screening tests would be done for every 1 COVID case detected.⁴ This was based on the fact that a total of 101,068 tests have been conducted so far which have resulted in 4135 COVID cases in India as of 6th April 2020.

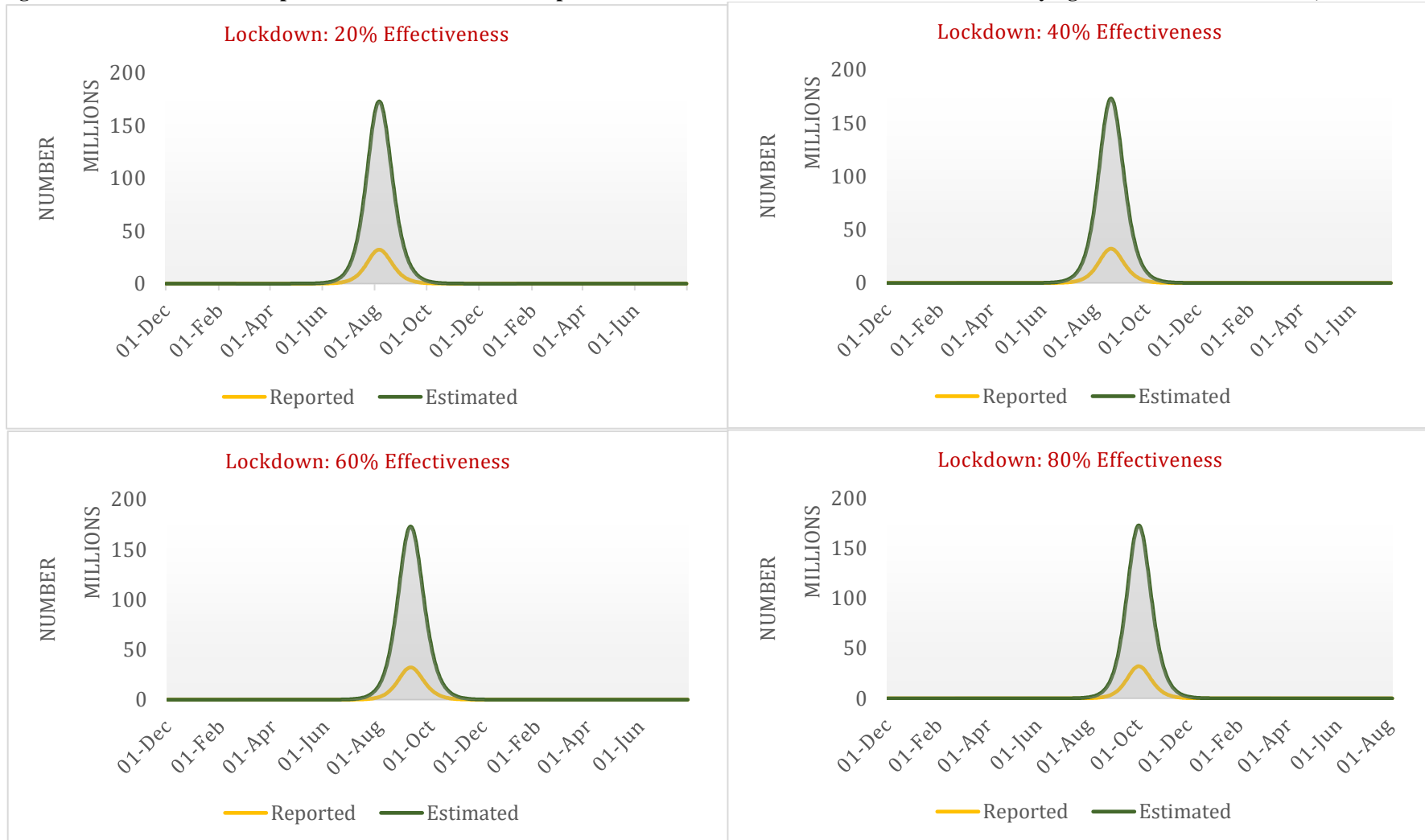
The cost of the contact tracing was based on a model which is led by health workers. This is as per the Indian Ministry of Health and Family Welfare guidelines⁵, as well as what has been Based on existing pattern, we assumed a 1-day staff-time of full time equivalent (FTE) of multipurpose health worker (MPW) per every detected case for the purpose of contact tracing. In order to estimate the cost of 1-day staff time for MPW FTE, we used the data from National Health System Costs Database⁶, which is comprised of data for more than 100 subcentres from 6 states in India.

For the cost of treatment, we used the number of mild, moderate, severe and critical cases among those cases who are diagnosed, as well as those which are likely to be undiagnosed – depending on the scenario of intervention and counterfactual. As per the Government of India guidelines for management of COVID cases, we assumed that the mild and very mild cases will be isolated in the COVID care centres (CCC), moderate cases will be treated in dedicated COVID Health Centres (CHC), while the severe and critical cases will be treated in COVID hospitals.⁷ Among the 94% of non-severe (and non-critical) cases, we assumed that 3.3% would be of moderate severity and rest would be mild infections. This is again as per the reported severity level of Indian patients as per reported data so far.⁷ In order to determine the unit costs of CCC, we applied the unit per-bed-day cost of at the level of a district hospital, with only 20% of the human resource cost. This was assumed in view of

the fact that such facilities would be managed by AYUSH doctors, with guidance from allopathic doctor, but would continue to provide the same supportive care as to a general patient in a district hospital. The unit cost was derived from the national health system cost database.⁶ For moderate cases, we used the full average per-bed-day cost of a district hospital. For the severe and critical case, we used the per-bed-day cost of an ICU stay or ICU with ventilator respectively. These unit costs were derived from the estimates of the Cost of Health Services in India (CHSI) study⁸, which have been used to set the provider payment rates under the Ayushman Bharat Prime Minister's Jan Arogya Yojana (AB-PMJAY)⁹ for treatment of COVID patients. The average length of stay for mild or moderate case was assumed to be 14 days, while a total of 30 days¹⁰ was assumed as the duration of hospital stay for severe and critical cases. Among the undiagnosed COVID cases in the community, we assumed that no hospitalization would be needed for the mild cases. However, the 1% of severe and critical cases will eventually be hospitalized and will incur cost of health care.

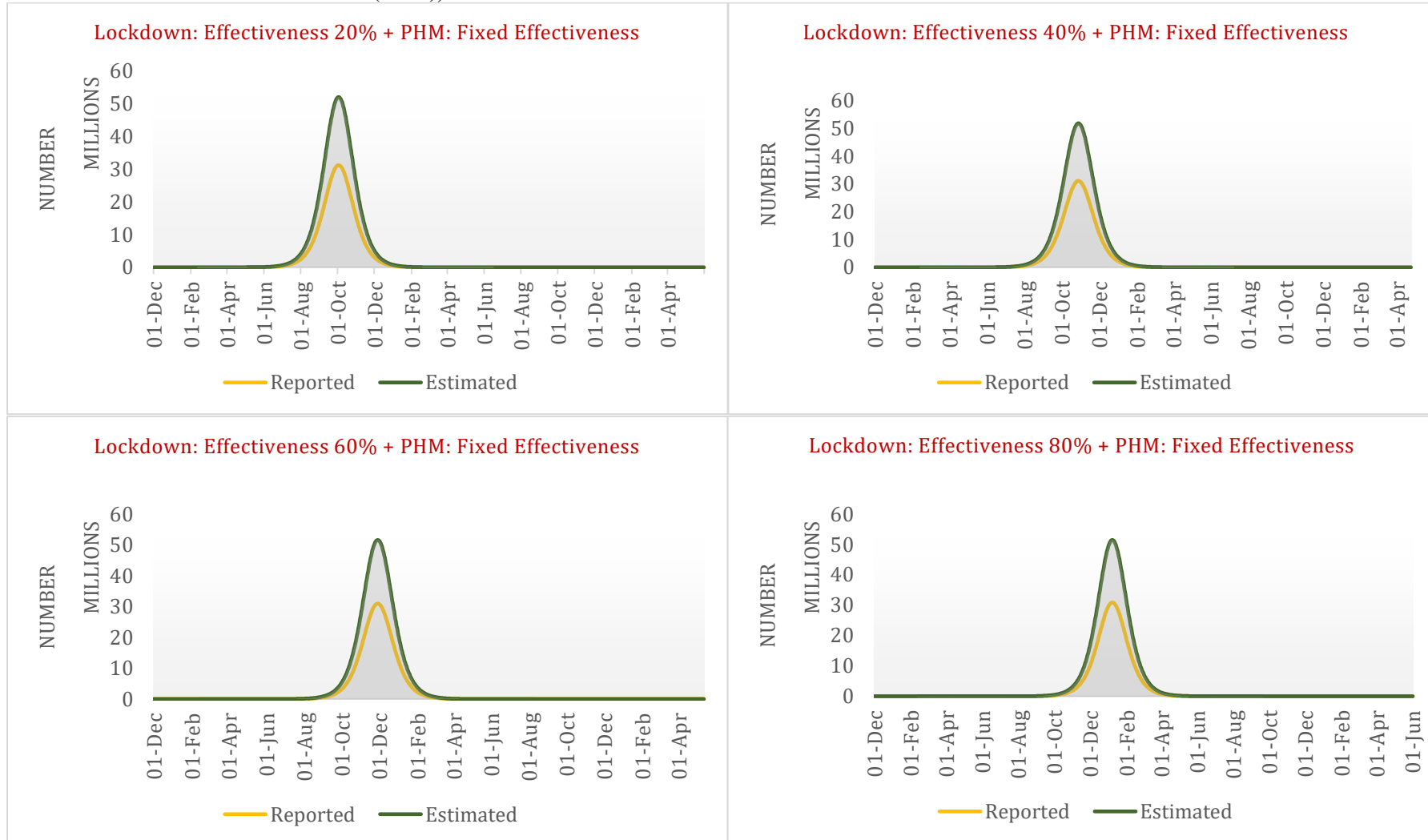
1.2 Results

Figure S1A: Estimated and Reported COVID-19 Infected Population in Potential Intervention Scenarios with varying effectiveness of lockdown, India.



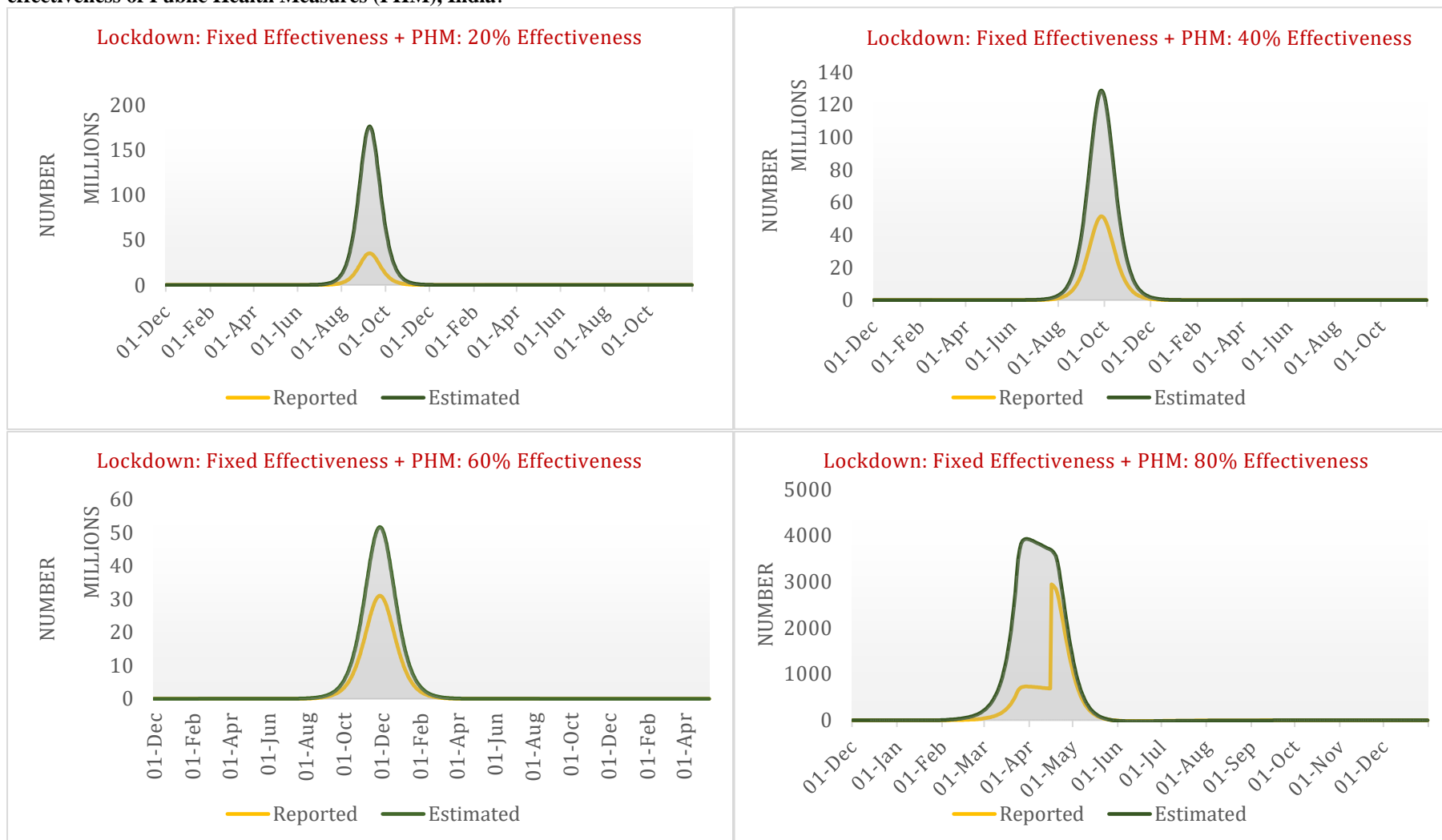
Note: Model cycle starts from Dec 1, 2019, Lockdown effectiveness varied @20%, 40%, 60% and 80%

Figure S1B: Estimated and Reported COVID-19 Infected Population in Potential Intervention Scenarios with varying effectiveness of lockdown and fixed effectiveness of Public Health Measures (PHM), India.



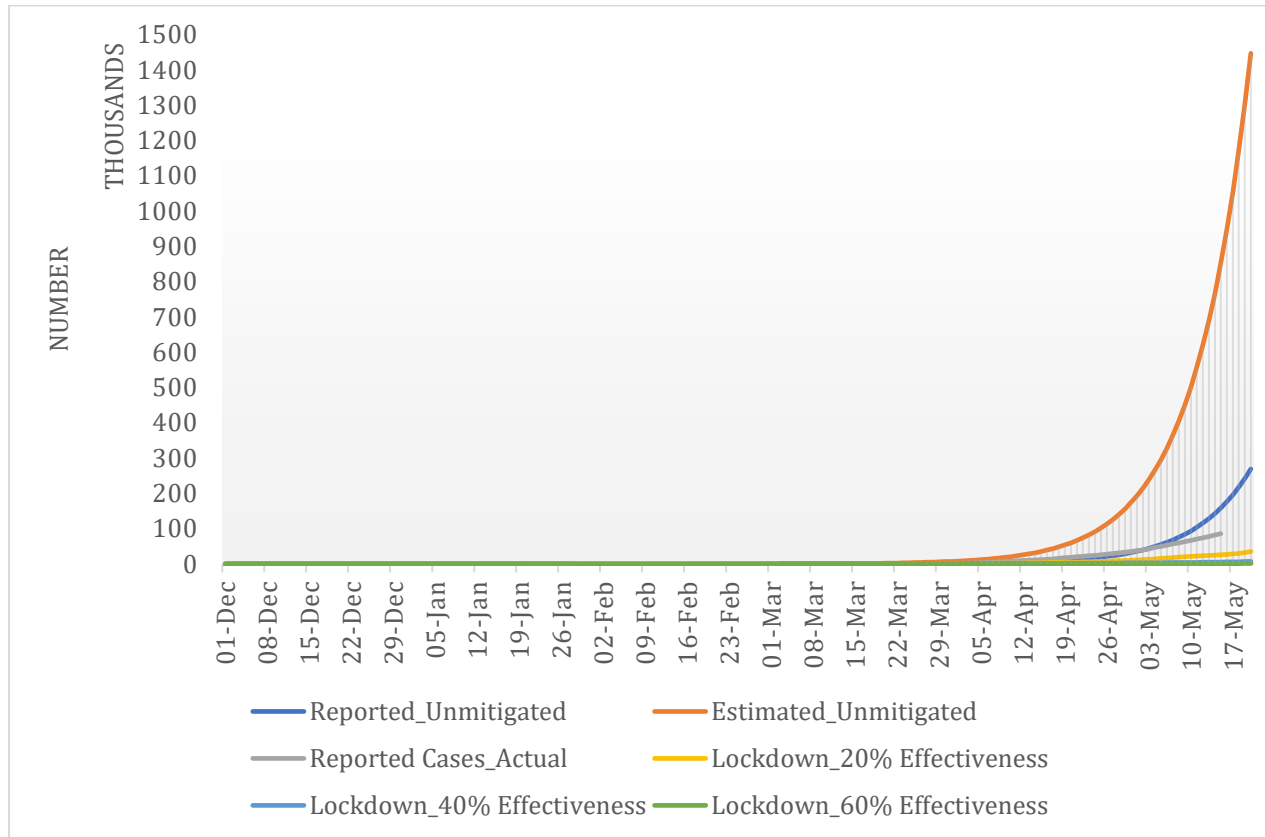
Note: Model cycle starts from Dec 1, 2019, Lockdown effectiveness varied @20%, 40%, 60% and 80%
 PHM= Public Health Measures (Includes intensified testing, isolation, treatment for 60% COVID Positive population)

Figure S1C: Estimated and Reported COVID-19 Infected Population in Potential Intervention Scenarios with fixed effectiveness of lockdown and varying effectiveness of Public Health Measures (PHM), India.



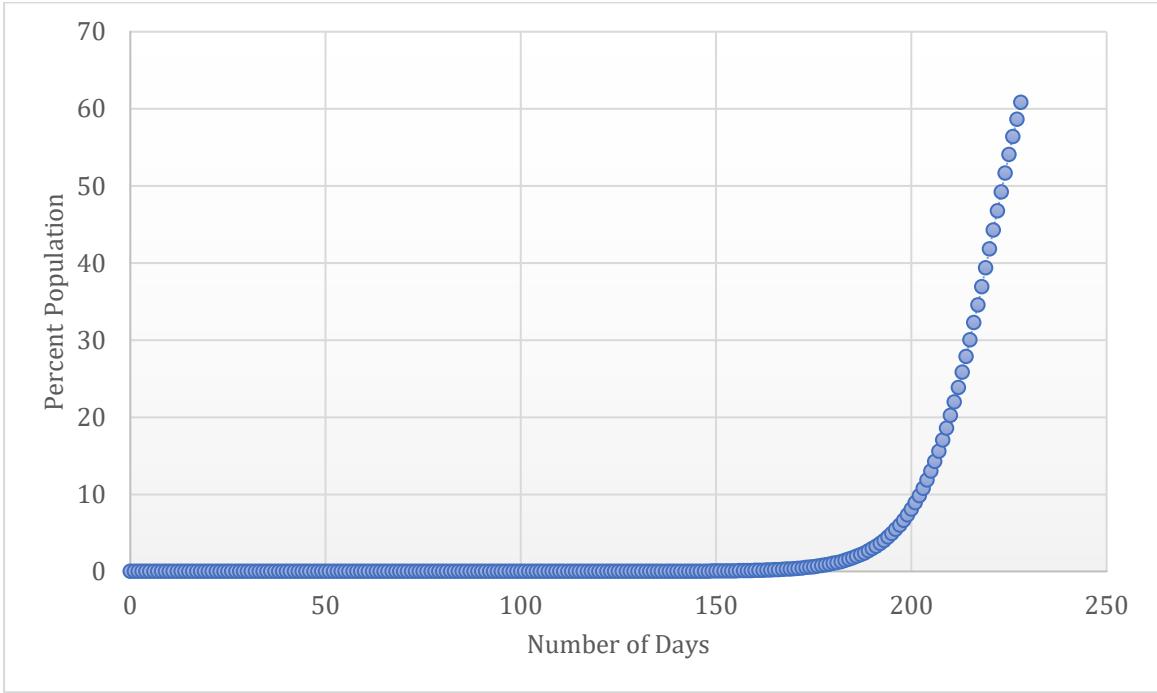
Note: Model cycle starts from Dec 1, 2019, Lockdown effectiveness varied @60%
 PHM= Public Health Measures (Includes intensified testing, isolation, treatment for 20%, 40%, 60% and 80% COVID Positive population)

Figure S2: Comparison of Reported Cases (Actual vs Model Estimated) of COVID-19 in Counterfactual, India



Note: Model cycle starts from Dec 1, 2019

Figure S3: Infected Population (%) at different points of Epidemic in Counterfactual Scenario, India



Note: Model cycle starts from Dec 1, 2019

References:

1. Indian Council of Medical Research. Advisory to start rapid antibody-based blood test for COVID-19. New Delhi: Department of Health Research; 2020.
2. Saw Swee Hock School of Public Health. COVID-19 Science Report: Diagnostics [Internet]. Singapore: National University Singapore; 2020. Available from: <https://sph.nus.edu.sg/wp-content/uploads/2020/04/COVID-19-Science-Report-Diagnostics-6-Apr.pdf>
3. Ministry of Health and Family Welfare, Government of India. Guidelines for COVID-19 testing in private laboratories in India. New Delhi; 2020
4. Icmr.nic.in. 2020 [cited 7 April 2020]. Available from: https://icmr.nic.in/sites/default/files/whats_new/ICMR_testing_update_06April_9PM_IST.pdf
5. Ministry of Health and Family Welfare. Containment Plan Novel Coronavirus Disease 2019 (COVID 19). New Delhi: Government of India; 2020.
6. Department of Community Medicine and School of Public Health PGIMER Chandigarh [Internet]. Healthconomics.pgisph.in. 2020 [cited 7 April 2020]. Available from: https://www.healthconomics.pgisph.in/costing_web/
7. Dey S. Only 1.5% of 1.3 lakh beds in Covid hospitals used. Times of India [Internet]. 2020 [cited 13 May 2020];. Available from: <https://timesofindia.indiatimes.com/india/only-1-5-of-1-3-lakh-beds-in-covid-hospitals-used/articleshow/75653088.cms>
8. Personal communication. Dr Maninder Pal Singh. Costing of Healthcare Services in India. Postgraduate Institute of Medical Education and Research. Chandigarh. India
9. Personal communication. Dr. Praveen Gedam, Additional Chief Executive Officer, National Health Authority, Govt of India. Costing for COVID Hospitals (E-mail). 2020 March 30.
10. World Health Organisation. Report of the WHO-China Joint Mission on Coronavirus Disease 2019 (COVID-19) [Internet]. World Health Organisation; 2020 p. 40. Available from: <https://www.who.int/docs/default-source/coronaviruse/who-china-joint-mission-on-covid-19-final-report.pdf>
11. Lachmann A. Correcting under-reported COVID-19 case numbers. medRxiv. 2020 Jan 1.