

Supplementary material

State heterogeneity of human mobility and COVID-19 epidemics in the European Union

By Yuan X, Hu K, Xu J, Zhang X, Bao W, Lynch CF, Zhang L.

Supplementary Table 1. The epidemics of laboratory-confirmed coronavirus disease 2019 (COVID-19) cases in the European Union by states between Jan. 15 and May 9, 2020.

State	Neighboring Group	Segment 1 Beta	Segment 2 Beta	Segment 3 Beta	TP 1 date	TP 2 date	Difference in TP (day)	Peak daily incidence (per mil)	Peak daily new case	Total cases	Social distance date	Lock-down date	Lift date
Austria	1	0.013	0.113	-0.037	3/1	3/24	23	126.688	1141	15586	3/17	3/16	5/1
Belgium	2	-0.771	0.092	-0.014	2/7	3/30	52	211.741	2454	50509	3/18	3/17	4/19
Bulgaria	2	0.136	0.044	0.008	3/14	3/23	9	13.096	91	1689	3/13	3/17	8/4
Croatia	1	-0.005	0.100	-0.030	3/9	3/29	20	23.385	96	2112	3/9	3/17	5/11
Cyprus	3	-0.384	0.039	-0.030	3/10	4/5	26	66.218	58	878	3/13	3/24	5/4
Czechia	2	-0.447	0.088	-0.023	3/1	3/28	27	38.099	408	7896	3/10	3/16	4/12
Denmark	3	0.160	0.027	-0.011	3/13	4/6	24	67.332	390	9821	3/16	3/11	4/13
Estonia	3	-0.460	0.057	-0.030	2/28	3/30	30	101.015	134	1711	3/13	NA	NA
Finland	3	-0.016	0.078	0.000	2/23	3/24	30	48.189	267	5412	3/12	3/27	4/16
France	1	-0.001	0.098	-0.021	2/19	3/26	37	116.096	7578	132967	3/4	3/17	5/11
Germany	2	-0.001	0.111	-0.019	2/20	3/25	34	75.122	6294	164897	3/14	3/23	5/10
Greece	2	-0.012	0.063	-0.022	2/16	3/26	39	14.967	156	2642	3/8	3/23	5/4
Hungary	3	-0.456	0.075	0.002	3/1	3/29	28	21.738	210	3111	3/12	3/28	4/10
Ireland	3	-0.452	0.102	0.000	3/1	3/28	27	236.745	1169	21983	3/12	3/12	5/18
Italy	0	0.078	0.016	-0.014	3/18	3/28	10	108.449	6557	213013	3/17	3/9	5/4
Latvia	3	-0.458	0.080	-0.015	3/1	3/25	24	37.642	71	896	3/12	NA	NA
Lithuania	3	-0.458	0.089	-0.027	3/1	3/30	29	44.815	122	1423	3/14	3/16	4/27

Luxembourg	2	-0.457	0.112	-0.033	3/1	3/26	25	373.816	234	3840	3/13	3/18	5/25
Malta	2	-0.445	0.021	-0.033	3/1	4/9	39	117.77	52	482	NA	NA	NA
Netherlands	2	-0.027	0.105	-0.012	2/18	3/25	36	77.911	1335	41087	3/10	3/16	4/28
Poland	3	-0.454	0.100	0.002	3/1	3/28	27	14.4	545	14431	3/10	3/13	4/11
Portugal	3	-0.453	0.117	-0.014	3/1	3/28	27	148.675	1516	25702	3/16	3/19	4/2
Romania	3	0.151	0.084	0.001	2/24	3/31	36	27.186	523	13837	3/6	3/23	5/15
Slovakia	3	-0.446	0.038	-0.041	3/1	4/10	40	20.88	114	1421	3/12	3/16	4/22
Slovenia	1	-0.445	0.059	-0.027	3/1	3/26	25	28.38	59	1445	3/12	NA	NA
Spain	2	0.000	0.123	-0.024	2/21	3/25	33	197.242	9222	220325	3/14	3/14	5/9
Sweden	3	-0.023	0.149	0.013	2/25	3/14	18	80.402	812	23216	3/17	NA	NA
Median*		-0.236	0.089	-0.017	3/1	3/28	28	67.332	390	7896			
Q1*		-0.455	0.058	-0.028	2/23	3/25	24	27.186	114	1689			
Q3*		-0.001	0.107	0.000	3/1	3/30	36	117.77	1335	25702			

Note: TP, Turning point; Beta1, Beta2 and Beta3 were the coefficients of segments 1, 2 and 3, respectively; NA, not applicable; Q1, 25% quartile; Q3, 75% quartile; *, summary of all states. The neighboring groups were classified according to their neighboring relationship to Italy, with the immediate neighboring states in the group 1

Supplementary Table 2. The *P* values for the trend difference in the laboratory-confirmed coronavirus disease 2019 (COVID-19) in the European Union by states between Jan. 15 and May 6, 2020.

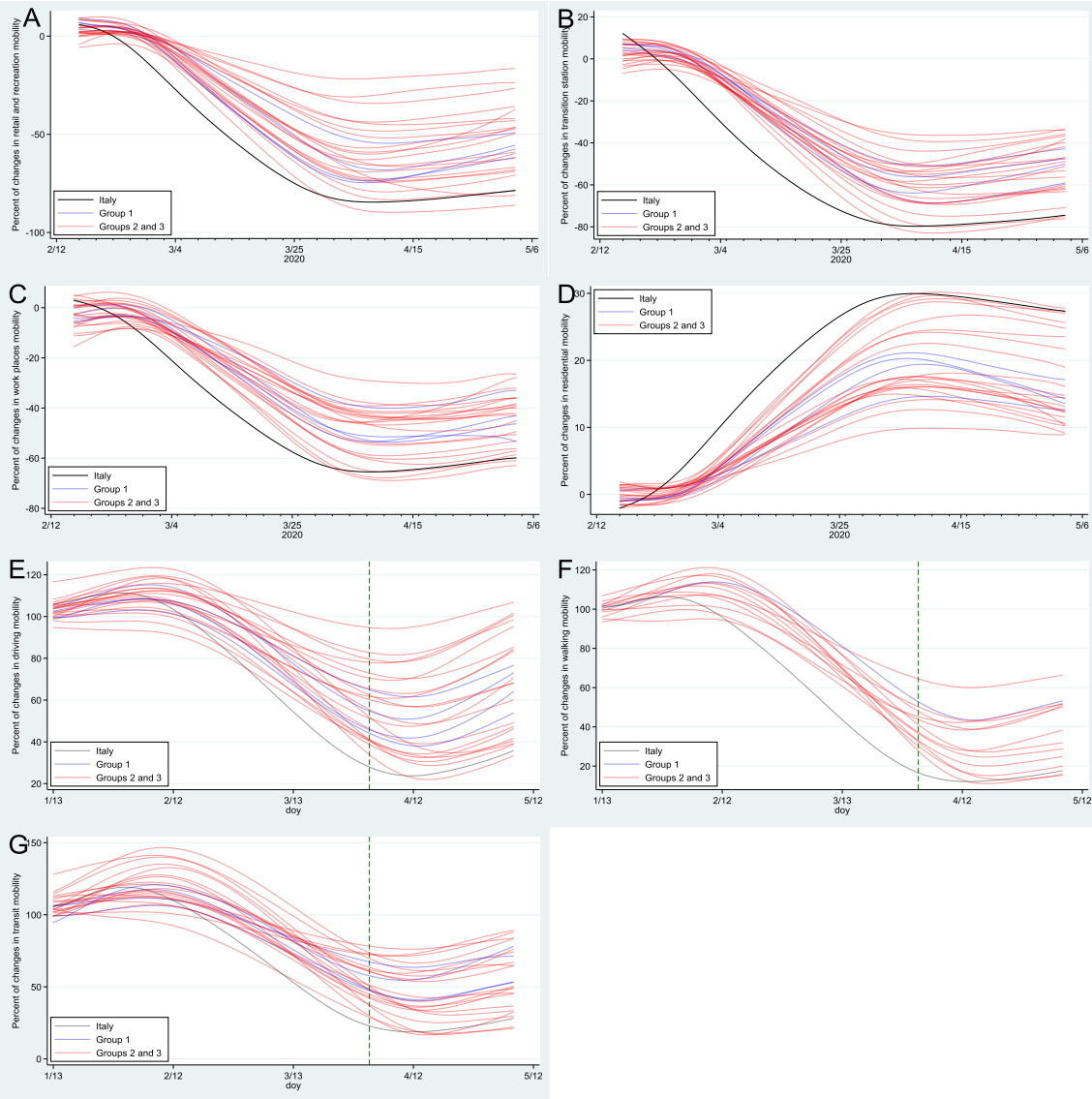
	Segment 1 Beta, median (interquartile)	Segment 2 Beta, median (interquartile)	Segment 3 Beta, median (interquartile)	P value for Segment 2 Beta vs Italy Segment 1 Beta	P value for Segment 2 Beta vs Italy Segment 2 Beta	P value for Segment 3 Beta vs Italy Segment 3 Beta
Group 1	-0.003 (-0.335 to 0.009)	0.099 (0.069 to 0.110)	-0.028 (-0.035 to -0.023)	0.302	0.007	0.020
Group 2	-0.027 (-0.452 to -0.001)	0.092 (0.053 to 0.112)	-0.022 (-0.028 to -0.013)	0.598	<0.001	0.239
Group 3	-0.452 (-0.457 to -0.019)	0.080 (0.048 to 0.101)	-0.011 (-0.028 to 0.001)	0.858	<0.001	0.584

Note: The 26 non-Italy European Union states were classified into 3 groups based the neighboring relationship to Italy, including Group 1 (Austria, Croatia, France and Slovenia), Group 2 (Belgium, Bulgaria, Czechia, Germany, Greece, Luxembourg, Malta, Netherlands and Spain) and Group 3 (the rest).

Supplementary Table 3. Summary of the human mobility in the European Union during February to May, 2020.

	Segment 1 Beta	Segment 2 Beta	Segment 3 Beta	Segment 2 Length (day)	Lowest mobility	Highest mobility
Google mobility (Feb. 15 to May 9, 2020)						
Retail and recreation	-0.11 (-0.26 to 0.07)	-7.43 (-12.71 to -6.01)	0.25 (0.16 to 0.37)	10 (6 to 11)	-86.0 (-91.3 to -71.0)	14.0 (8.0 to 18.8)
Parks	-0.35 (-1.05 to 0.97)	-3.92 (-11.29 to 0.04)	0.69 (0.29 to 1.33)	14 (5 to 29)	-64.0 (-71.5 to -38.3)	66.0 (44.8 to 112.5)
Residential	0.02 (-0.02 to 0.05)	1.70 (1.26 to 2.86)	-0.11 (-0.18 to -0.07)	12 (9 to 15)	-2.0 (-3.0 to -1.0)	32.5 (27.0 to 37.0)
Grocery and pharmacy	0.38 (0.28 to 0.53)	-7.52 (-11.98 to -4.28)	0.23 (0.11 to 0.30)	5 (4 to 8)	-88.0 (-93.0 to -51.0)	27.5 (22.8 to 37.8)
Workplace	0.17 (0.08 to 0.36)	-4.24 (-8.19 to -3.48)	0.13 (0.07 to 0.22)	12 (8 to 14)	-86.0 (-88.0 to -84.0)	3.5 (2.5 to 6.0)
Transit station	-0.14 (-0.24 to 0.20)	-6.24 (-8.02 to -4.80)	0.24 (0.16 to 0.38)	10 (9 to 13)	-77.0 (-85.0 to -71.5)	14.0 (10.0 to 16.0)
Apple mobility (Jan. 15 to May 7, 2020)						
Walking	0.34 (0.19 to 0.70)	-8.26 (-10.39 to -6.18)	0.48 (0.31 to 0.61)	11 (10 to 14)	19.2 (16.1 to 33.8)	166.4 (147.9 to 196.4)
Driving	0.19 (0.08 to 0.30)	-5.76 (-7.05 to -5.30)	0.58 (0.49 to 0.79)	13 (11 to 15)	25.6 (18.8 to 37.9)	140.2 (130.4 to 146.7)
Transit ^a	0.37 (0.17 to 0.55)	-8.78 (-9.63 to -5.95)	0.25 (0.19 to 0.43)	12 (11 to 13)	18.2 (10.3 to 26.4)	131.9 (121.4 to 146.8)

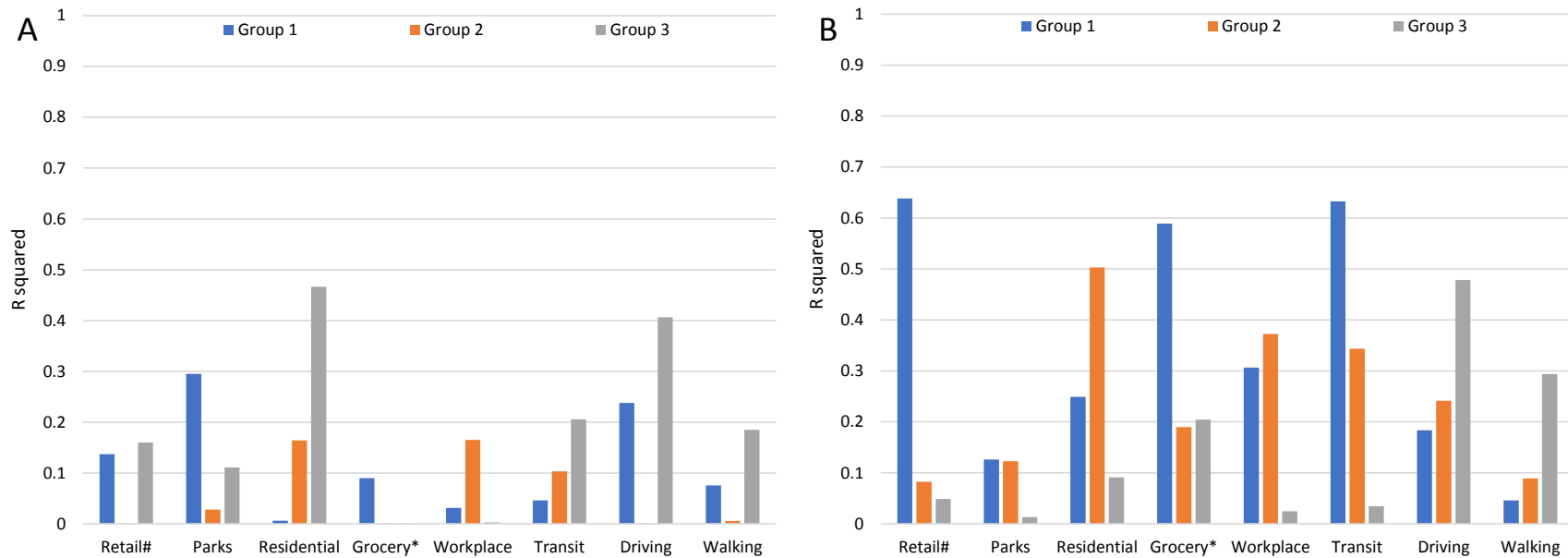
Note: All data shown in median (interquartile); ^a Data of transit mobility by Apple, Inc were available in 16 of the 27 European Union states.



Supplementary Figure 1. The percentage changes of human mobilities in the 27 European Union states.

The mobility data of retails and recreation (A), transit station (B), work places (C) and residential (D) were extracted from the Google mobility website with 0 as the baseline. The mobility data of driving (E), walking (F) and transit (G) were extracted from the Apple mobility website, with 100 as the baseline. The state groups were classified according to their neighboring relationship to Italy, with the immediate neighboring states in the group 1.

Supplementary Figure 2. Associations of the social-distance starting dates with the turning points in human mobility during Feb. to May, 2020.



The association of dates in implementing social distancing with second turning points in human mobility (A) and that with first turning points (B) in human mobility by state groups. Despite moderately high R-squared values in the three state groups, dates in implementing social distancing were inversely associated with the residential, driving and walking mobilities, except the positive association of driving mobility with first turning points in group 3 and that of residential mobility with first turning points in group 2 (B). However, the association of dates in implementing social distancing with first turning points in human mobility appeared stronger in the states closer to Italy (group 1, blue bars). The larger R-squared values indicate

stronger inverse or positive associations. The state groups were classified according to their neighboring relationship to Italy. #, also included pharmacy mobility; *, also included recreation mobility.