

Supporting Information: Heterogeneity is essential for contact tracing

Bjarke Frost Nielsen,¹ Kim Sneppen,¹ Lone Simonsen,² and Joachim Mathiesen¹

¹*Niels Bohr Institute, University of Copenhagen, 2100 Copenhagen, Denmark*

²*Department of Science and Environment,
Roskilde University, 4000 Roskilde, Denmark*

(Dated: June 5, 2020)

I. TWO TESTING SCHEMES

As mentioned in the main text, the two simplest assumptions regarding the *regular testing* scheme are that symptomatic individuals are tested at a constant *rate* (throughout their illness), *or* that they have a *fixed probability* of being tested when first developing symptoms. In the main text, we have assumed fixed probability throughout. The two schemes turn out to perform quite similarly in practice, as figure 1 shows.

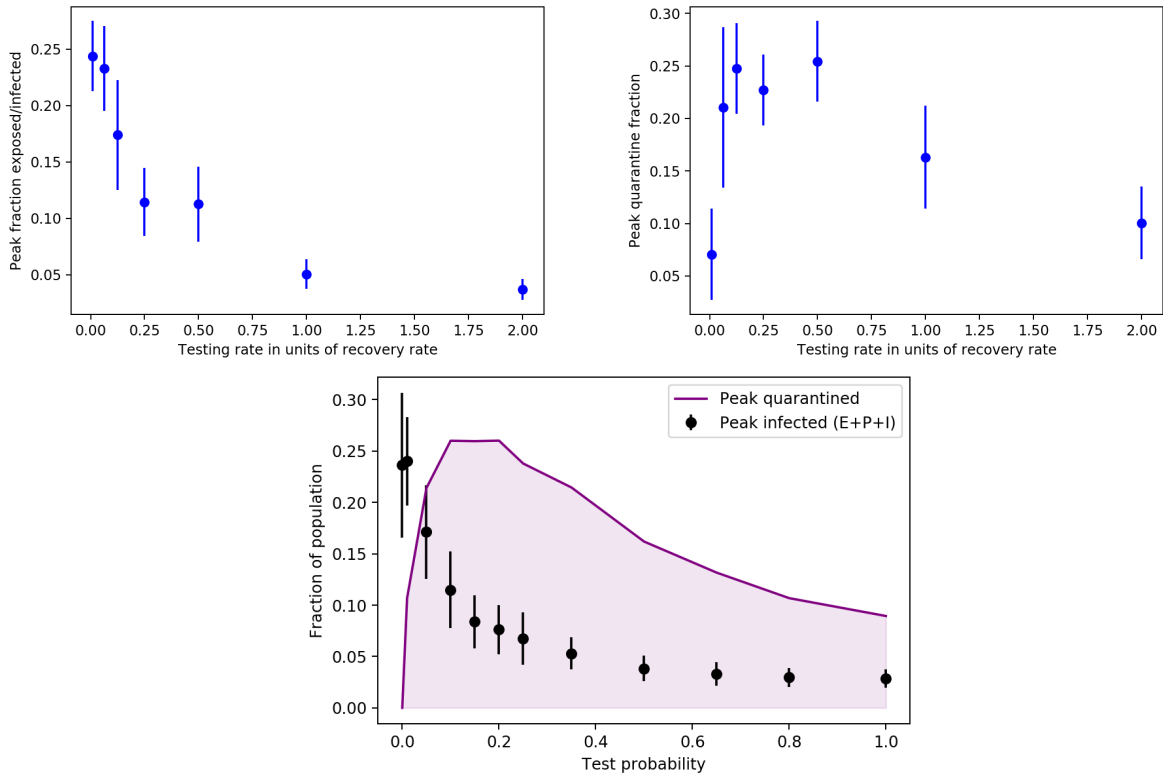


FIG. 1. Contact tracing effectiveness in the two schemes. The two upper panels show results in the "rate of testing" scheme, while the lower panel shows the corresponding data for the "fixed probability" scheme. In all cases, the contact threshold is set at 125 minutes. Note that a testing *rate* of 1 corresponds to a testing probability of 50%, so the horizontal axes are scaled so as to be directly comparable.