

**Supplementary information**

**for**

**CoVID-19 in Singapore: Impact of Contact Tracing and Self-awareness  
on Healthcare Demand**

## 1, Details of distribution models used in our parameter estimation.

For the serial interval and the different types of delay (e.g., tracing delay, onset to isolation delay for 4 different classes, and isolation to confirmation delay in all cases), we tested their best-fit results with different distributions as list in Table 1.

**Table 1.** Distribution function.

Distribution	Function	Notes
Normal	$f(x) = \frac{\exp(-x^2/2)}{\sqrt{2\pi}}$	$x$ is real number.
Skewed norm	$f(x, a) = 2 \cdot \text{norm. pdf}(x) \cdot \text{norm. cdf}(ax)$	<i>pdf</i> and <i>cdf</i> represent probability density and cumulative distribution.
Lognormal	$f(x, s) = \frac{1}{sx\sqrt{2\pi}} \exp\left(-\frac{\log^2(x)}{2s^2}\right)$	$x > 0, s > 0$ .
Weibull	$f(x, c) = cx^{c-1} \exp(-x^c)$	$x \geq 0, c > 0$ .
Exponentiated Weibull	$f(x, a, c) = ac[1 - \exp(-x^c)]^{a-1} \exp(-x^c)x^{c-1}$	$x > 0, a > 0, c > 0$
Fold Cauchy	$f(x, c) = \frac{1}{\pi(1 + (x - c)^2)} + \frac{1}{\pi(1 + (x + c)^2)}$	$x \geq 0$ .
Gamma	$f(x, a) = \frac{x^{a-1} \exp(-x)}{\Gamma(a)}$	$x \geq 0, a > 0$ . Here $\Gamma(a)$ refers to the gamma function.
Logistic	$f(x, A1, A2, p, x0) = A2 + \frac{(A1 - A2)}{1 + (x/x0)^p}$	

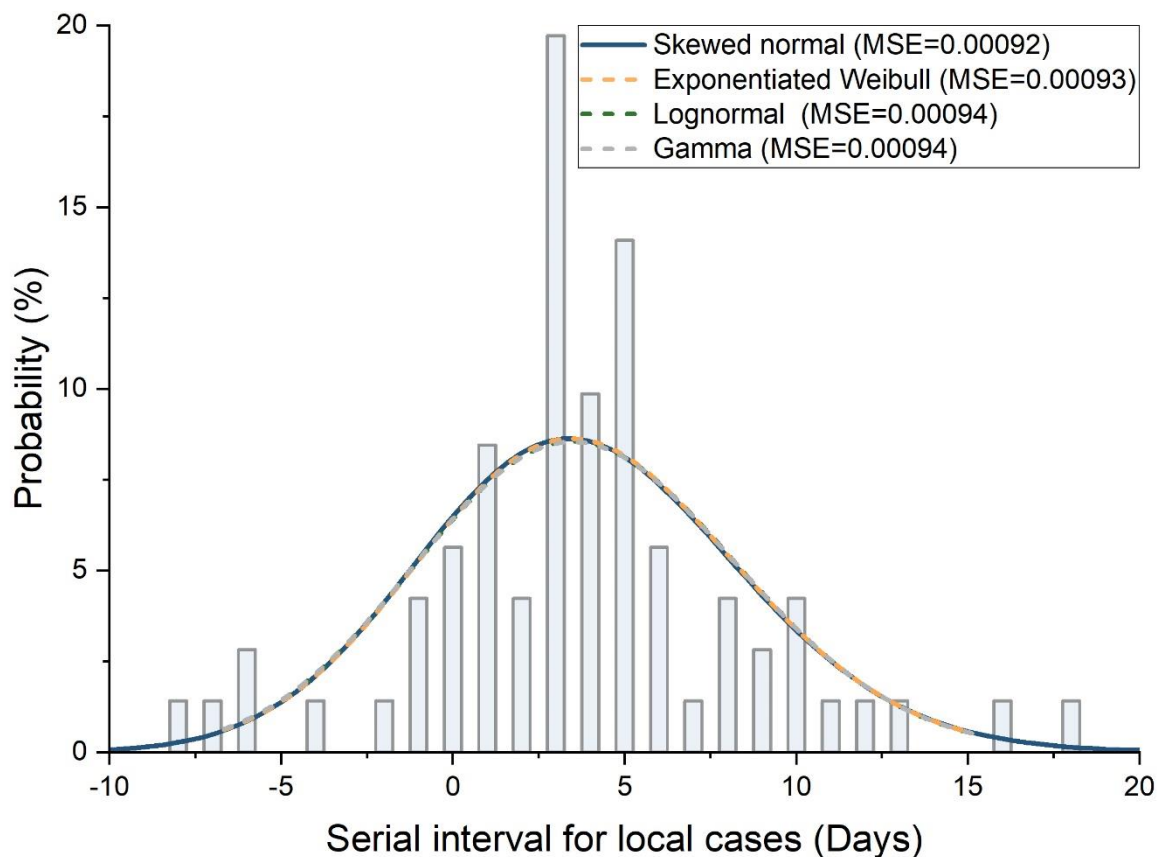
\* The probability density above is defined in the “standardized” form. To shift and/or scale the distribution use the loc and scale parameters. Specifically,  $f(x, loc, scale)$  is identically equivalent to  $f(y) / scale$  with  $y = (x - loc)/scale$ .

## 2, Serial interval estimation.

We counted the delay between the symptom-onset time of infector and infectee of 72 pairs of linked cases, then tested the best-fit result with different distributions as list in Table 1. It can be observed that both of the skewed normal distribution, exponentiated Weibull distribution, lognormal distribution and gamma distribution have quit a good fit for serial interval, but the skewed normal distribution provided the best fit.

**Table 2.** The parameters and MSE of the top four best fit distributions for serial interval based on 72 pairs reported linked transmission events in Singapore between January 23, 2020 and March 16, 2020.

	Distribution	Parameters	MSE
Serial interval	Skewed normal	$a=1.1122, loc=-0.3588, scale=5.8032$	<b>0.00092</b>
	Exponentiated Weibull	$a=11.0015, c=6.5081, loc=-71.8939, scale=64.5313$	0.00093
	Lognormal	$s=0.0427, loc=-105.6226, scale=109.3115$	0.00094
	Gamma	$a=234.9348, loc=-67.9853, scale=0.3055$	0.00094



**Figure 1:** Maximum likelihood distributions fit to the serial interval for local cases. To have clear illustrations, only the top four best fit distributions are presented for each case.

### 3, The estimations of different delays.

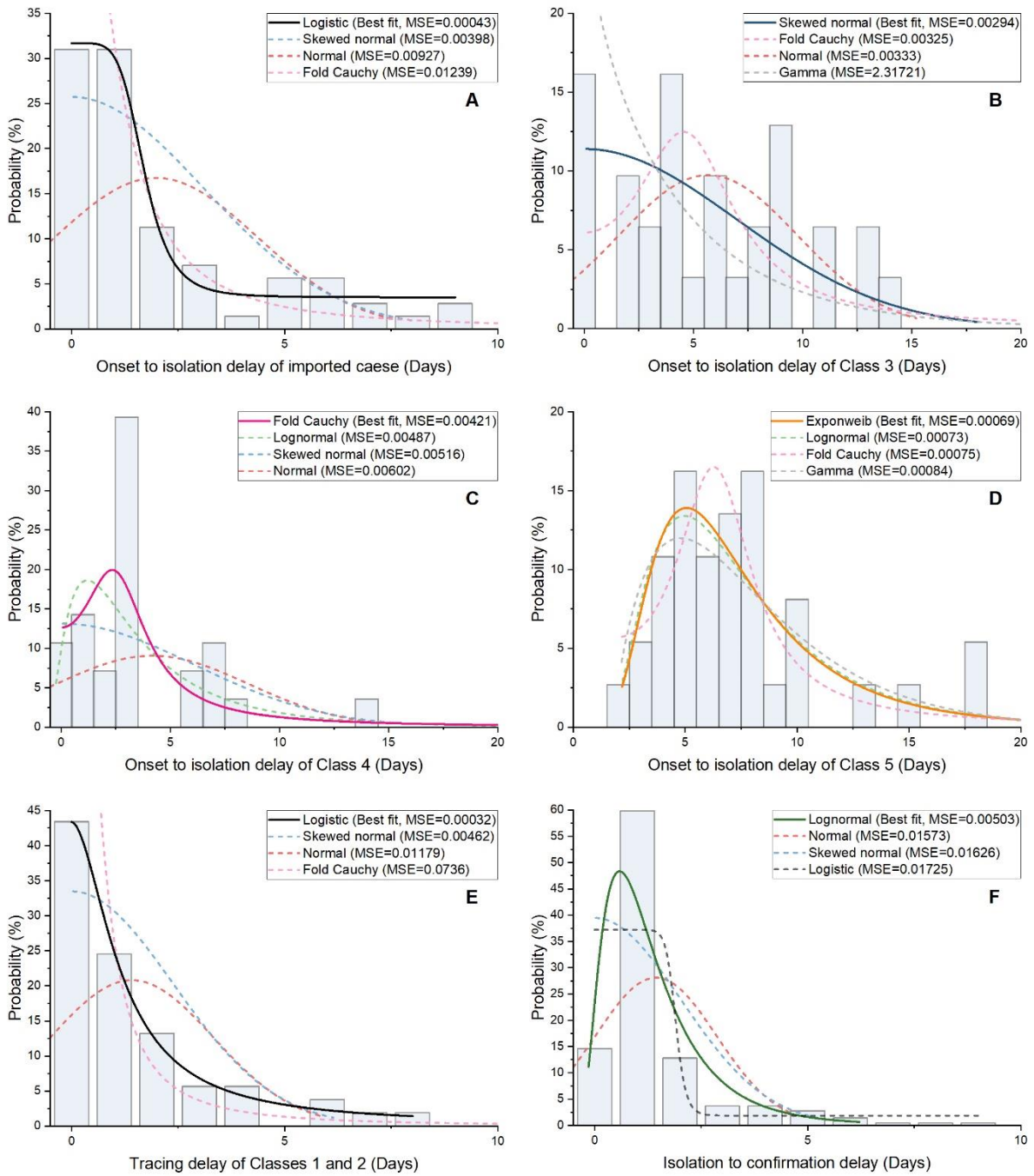
For each of the different types of delay, we tested their best-fit results with different distributions such as norm, skewed normal, lognormal, Weibull, exponentiated Weibull, fold Cauchy, logistic and gamma distributions (as shown in Table 1). It is found that the logistic distribution provided the best fit for onset to isolation delay for imported cases and tracing delay. The lognormal distribution provided the best fit for isolation to confirmation delay. The skewed normal distribution provided the best fit for the onset to isolation delay for Class 3, while the fold Cauchy and exponentiated Weibull distributions fitted onset to isolation delay for Classes 4 and 5 best, respectively.

**Table 3.** The parameters and MSE of the top 4 best fit distributions for the delay from onset to isolation of imported cases and cases in Classes 3-5 respectively, based on 247 reported transmission events in Singapore between January 23, 2020 and March 16, 2020.

	<b>Distribution</b>	<b>Parameters</b>	<b>MSE</b>
Imported cases	Logistic	A1=0.31689, A2=0.0351, x0=1.70214, p=5.35513	<b>0.00043</b>
	Skewed normal	a=18855325.0091, loc=0, scale=3.1015	0.00398
	Normal	loc=1.9859, scale=2.3824	0.00927
	Fold Cauchy	c=0.0002, loc=0, scale=0.9999	0.01239
Class 3	Skewed normal	a=15958514.6804, loc=0, scale=7.0027	<b>0.00294</b>
	Fold Cauchy	c=1.6711, loc=0, scale=2.7604	0.00325
	Normal	loc=5.6774, scale=4.0987	0.00333
	Gamma	a=0.9049, loc=0, scale=4.8627	2.31721
Class 4	Fold Cauchy	c=1.3474, loc=0, scale=1.7909	<b>0.00421</b>
	Lognormal	s=0.7765, loc=-0.8484, scale=3.7317	0.00487
	Skewed normal	a=23068404.5626, loc=0, scale=6.0683	0.00516
	Normal	loc=4.1786, scale=4.4001	0.00602
Class 5	Exponentiated Weibull	a=145.3763, c=0.4752, loc=-0.8282, scale=0.2194	<b>0.00069</b>
	Lognormal	s=0.5792, loc=0.6142, scale=6.0806	0.00073
	Fold Cauchy	c=2.1146, loc=2.0000, scale=2.0315	0.00075
	Gamma	a=2.0148, loc=1.6906, scale=3.0511	0.00084

**Table 4.** The parameters and MSE of the top four best fit distributions for tracing delay (for cases belonging to Classes 1 and 2) and isolation to confirmation delay, based on 247 reported transmission events in Singapore between January 23, 2020 and March 16, 2020.

	<b>Distribution</b>	<b>Parameters</b>	<b>MSE</b>
Tracing delay	Logistic	A1=0.43346, A2=0.00108, x0=1.17568, p=1.80693	<b>0.00032</b>
	Skewed normal	a=5818014.6979, loc=0, scale=2.3836	0.00462
	Normal	loc=1.4151, scale=1.9175	0.01179
	Fold Cauchy	c=0.0003, loc=0, scale=0.5319	0.0736
Isolation to confirmation delay	Lognormal	s=0.6110, loc=-0.5353, scale=1.6279	<b>0.00503</b>
	Normal	loc=1.4384, scale=1.4205	0.01573
	Skewed normal	a=12356208.5594, loc=0, scale=2.0215	0.01626
	Logistic	A1=0.37214, A2=0.01822, x0=1.90346, p=16.17124	0.01725



**Figure 2:** Maximum likelihood distributions fit to the delay from onset to isolation for imported cases and cases in Classes 3-5, tracing delay for cases belonging to Classes 1 and 2, and the delay from isolation to confirmation for all cases. To have clear illustrations, only the top four best fit distributions are presented for each case.

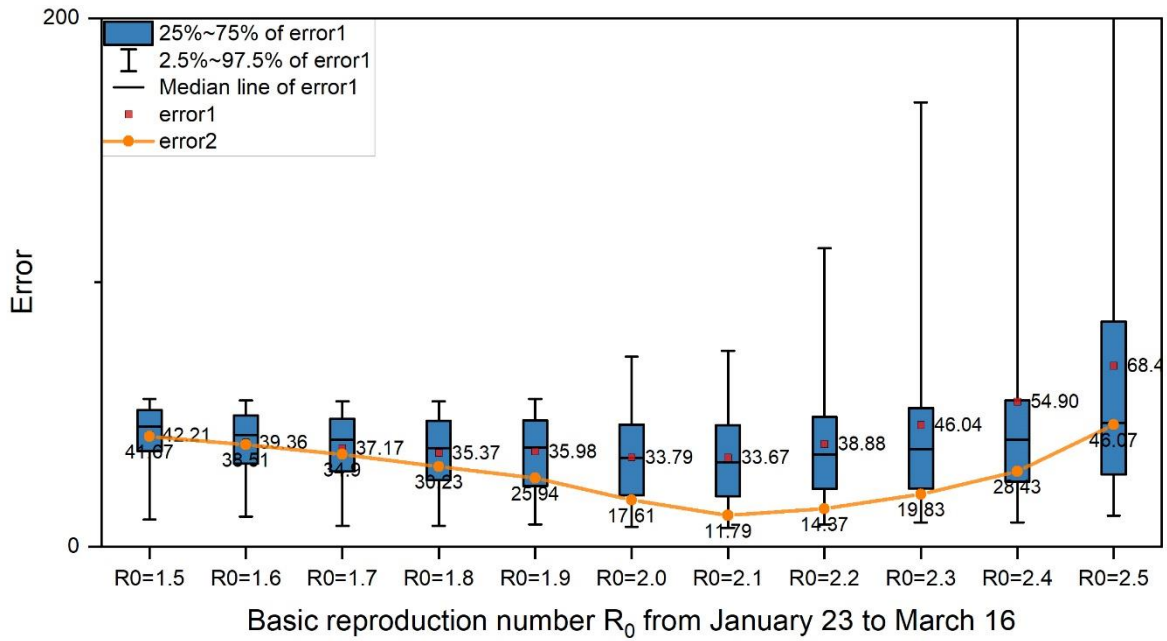
#### 4, The basic reproduction number estimation.

We defined two error evaluation metrics to measure the performance of our model:

$$error1 = \frac{1}{N} \sum_{n=1}^N \left( \frac{1}{D} \sum_{d=1}^D |\hat{y}_{n,d} - y_d| \right) \quad (1)$$

$$error2 = \frac{1}{D} \sum_{d=1}^D \left( \left| \frac{1}{N} \sum_{n=1}^N \hat{y}_{n,d} - y_d \right| \right) \quad (2)$$

where  $y_d$  represents the cumulative number of confirmed cases on the d-th day (the first day is January 23), and the  $\hat{y}_{n,d}$  represents the n-th simulation result on the d-th day,  $D$  is the number of days and  $N$  is the number of repetitive simulations.  $error1$  and  $error2$  represent the stability and accuracy of the model, respectively. By varying  $R_0$  from 1.5 to 2.5, we estimated the basic reproduction number for both imported cases and local cases from January 23 to March 16, it can be observed from Figure S3 that when  $R_0 = 2.1$ , the model has the minimum errors,  $error1=33.67$  and  $error2=11.79$ .



**Figure 3:** The errors of each  $R_0$ . The whiskers and the blue boxes represent 95% and 50% confidence range, respectively. The red dots in the blue box represent  $error1$ , while the orange dots represent  $error2$ .