

SUPPLEMENTARY FILE 1

iSCAN: An RT-LAMP-coupled CRISPR-Cas12 module for rapid, sensitive detection of SARS-CoV-2

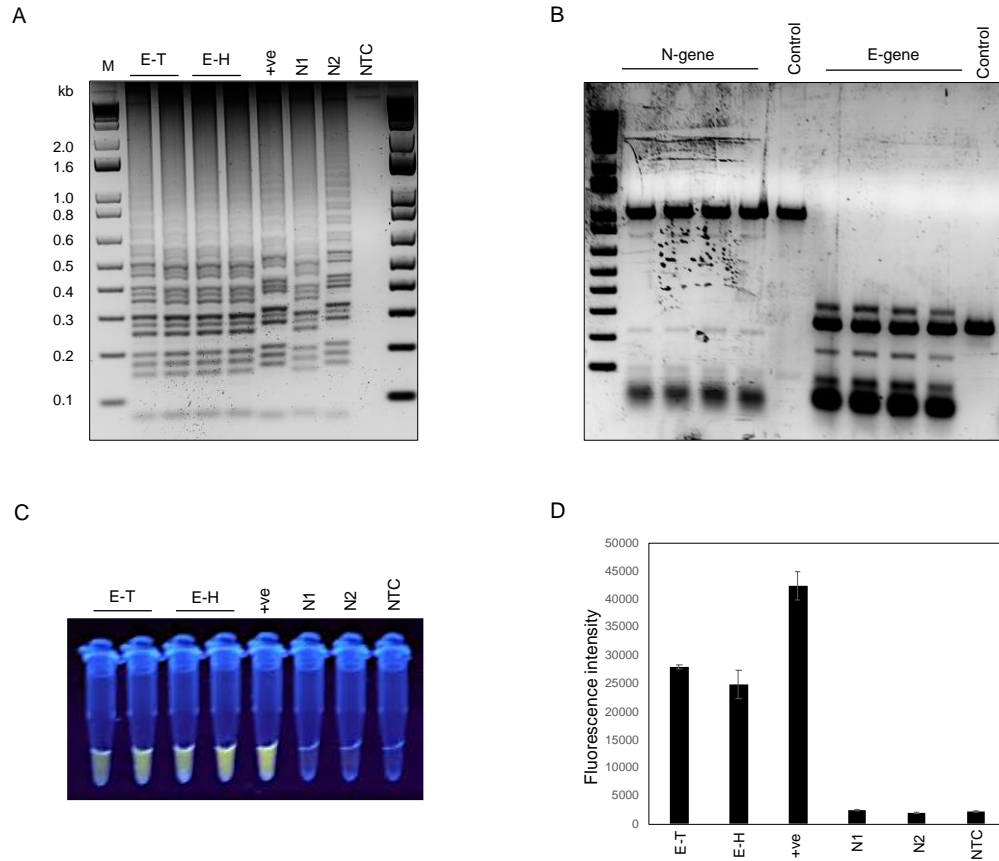
Zahir Ali^{1,*}, Rashid Aman^{1,*}, Ahmed Mahas^{1,*}, Gundra Sivakrishna Rao¹, Muhammad Tehseen³, Tin Marsic¹, Rahul Salunke², Amit K. Subudhi, Sharif M. Hala, Samir M. Hamdan³, Arnab Pain², Norhan Hassan¹, and Magdy M. Mahfouz^{1,†}

¹Laboratory for Genome Engineering and Synthetic Biology, Division of Biological Sciences, 4700 King Abdullah University of Science and Technology, Thuwal 23955-6900, Saudi Arabia. ²Pathogen Genomics Laboratory, BESE Division, King Abdullah University of Science and Technology (KAUST), Thuwal, Saudi Arabia. ³Laboratory of DNA Replication and Recombination, Biological and Environmental Sciences and Engineering Division, King Abdullah University of Science and Technology (KAUST), Thuwal 23955-6900, Saudi Arabia.

[†]**Correspondence:** Magdy M. Mahfouz (magdy.mahfouz@kaust.edu.sa)

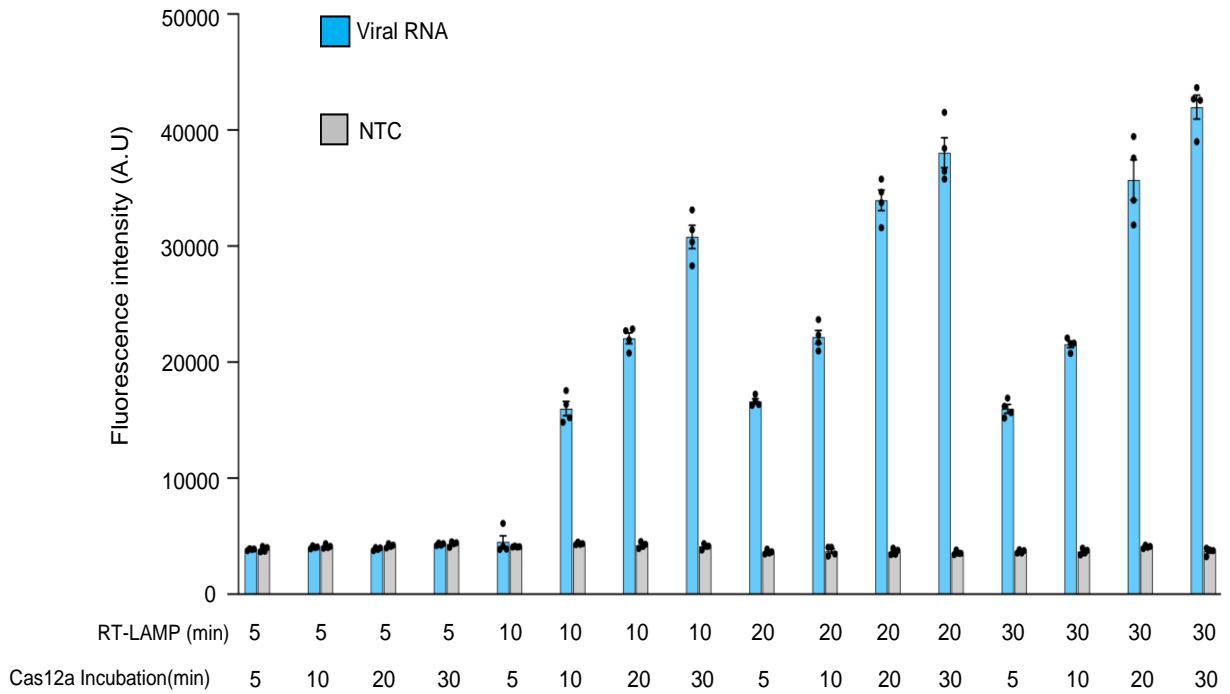
*These authors contributed equally: Zahir Ali, Rashid Aman, and Ahmed Mahas

Key words: COVID-19, SARS-CoV-2, RT-LAMP, CRISPR-Cas12, nucleic acid detection, biosensors, diagnostics



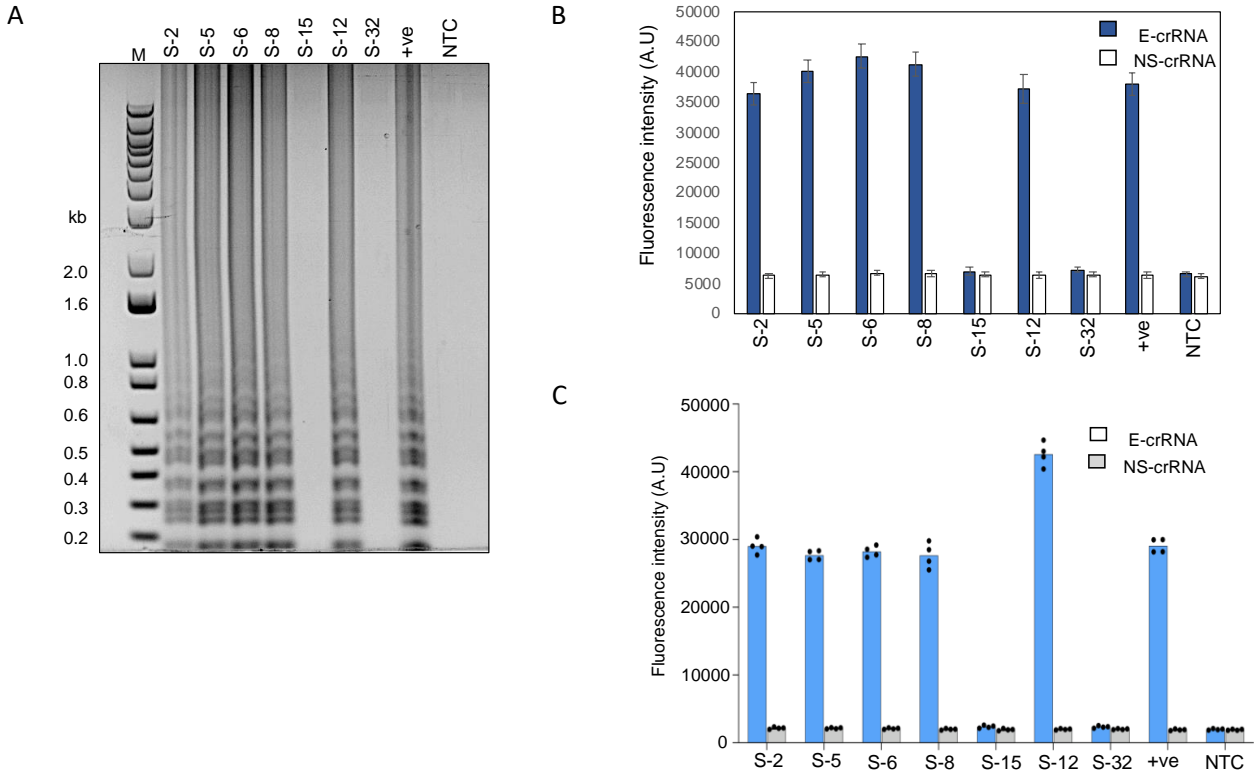
Supplementary Figure 1: Assessment of enzyme activity and performance of the in-house produced proteins.

- A) Visualization of the amplicons in agarose gel after RT-LAMP amplification of E-gene; E-T: E-gene detection in Tris buffer, E-H: E-gene detection in HEPES buffer, +ve: E-gene detection with commercial enzymes, N1: sample without crRNA, N2: sample with NS-crRNA, NTC: No template control.
- B) Cas12a based restriction of target dsDNA. Visualization of the fragments generated by Cas12a cis-cleavage of the target regions in agarose gel.
- C) Visual fluorescence readout after Cas12a collateral activity; E-T: E-gene detection in Tris buffer, E-H: E-gene detection in HEPES buffer, +ve: E-gene detection with commercial enzymes, N1: sample without crRNA, N2: sample with NS-crRNA, NTC: sample without template.
- D) Quantification of fluorescence signal after Cas12a collateral cleavage of reporters; E-T: E-gene detection in Tris buffer, E-H: E-gene detection in HEPES buffer, +ve: E-gene detection with commercial enzymes, N1: sample without crRNA, N2: sample with NS-crRNA, NTC: sample without template. Values are shown as mean \pm SD (n=3).



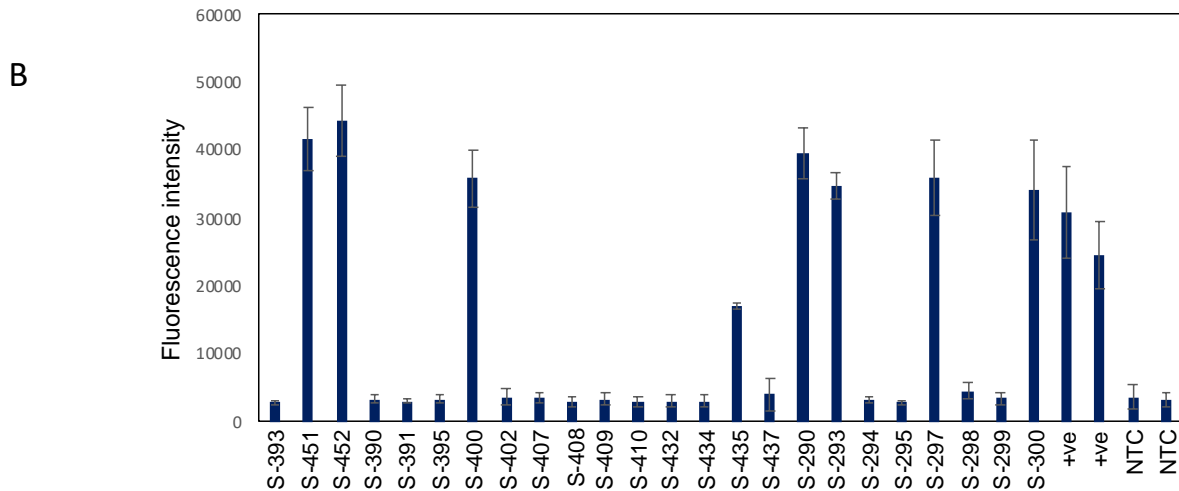
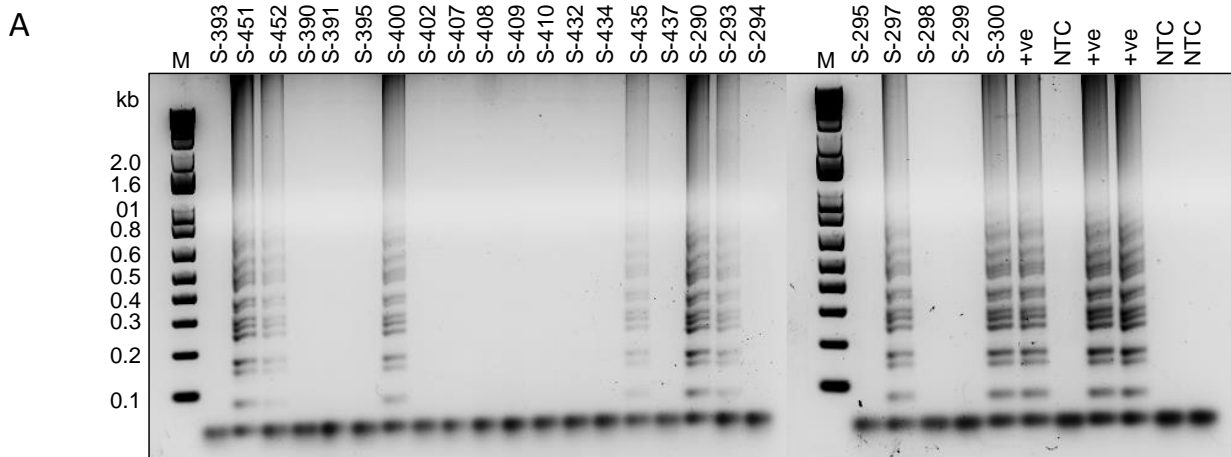
Supplementary Figure 2: RT-LAMP and Cas12a time course optimization of detection assay duration.

The figure depicts different combinations of RT-LAMP assay and Cas12a duration times. Synthetic SARS-CoV-2 RNA was used at 10 Copies per reaction. NTC: no template control. Values are shown as mean \pm SD (n=4).



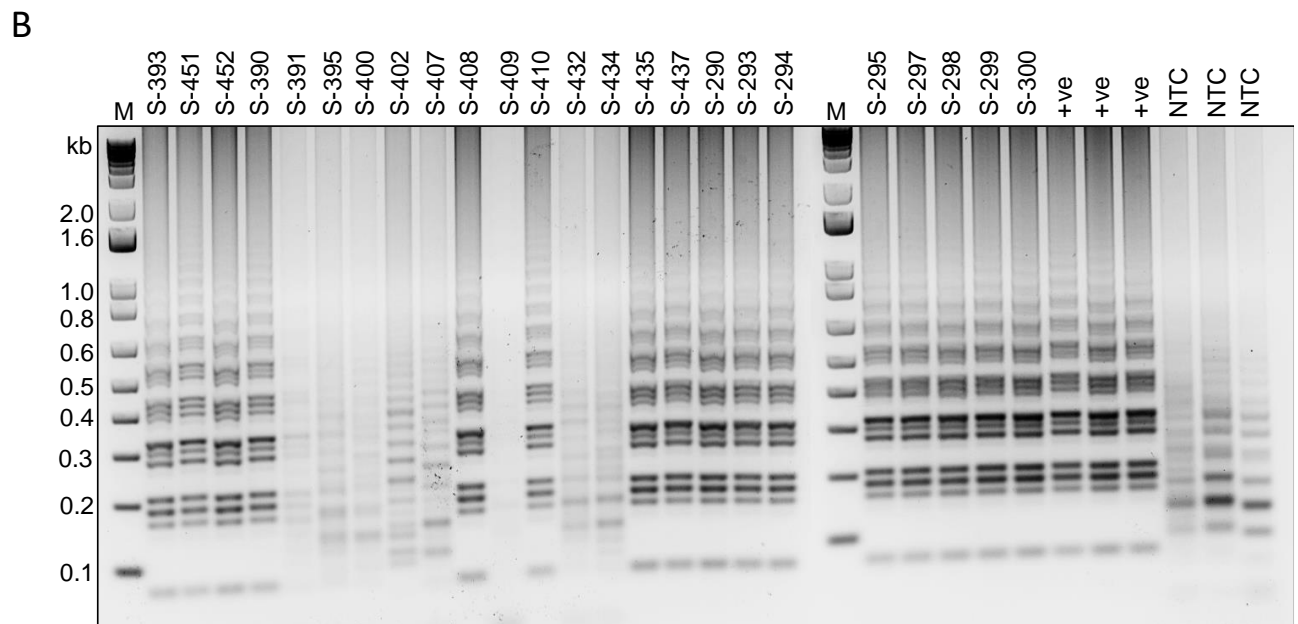
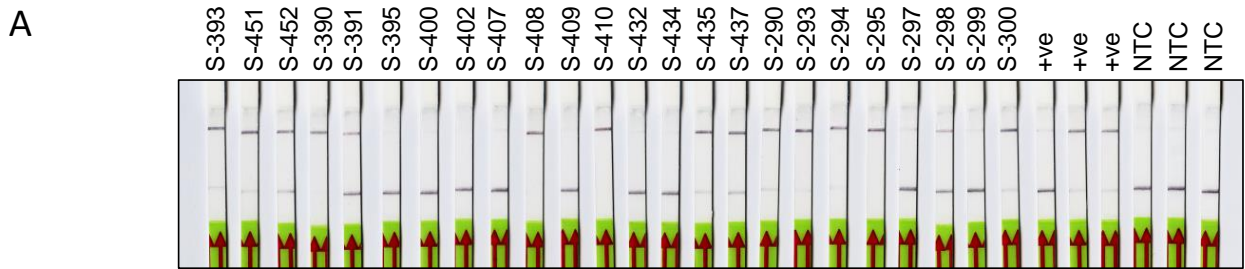
Supplementary Figure 3: Detection of SARS-CoV-2 RNA extracted from patient samples

- A) RT-LAMP generated amplification products with primer set targeting E-gene in agarose gel. S - RNA isolated from different clinical samples: +ve: synthetic SARS-CoV-2 RNA; NTC: no template control. M: Marker.
- B) Fluorescence signal of different clinical samples after Cas12a-based detection assay using FAM- Q reporter; E-crRNA: assay performed with E-gene crRNA, NS-crRNA: assay performed with non-specific crRNA. Values are shown as mean \pm SD (n=3).
- C) Fluorescence signal of the samples after Cas12a-based detection assay using commercial HEX reporter; E-crRNA: assay performed with E-gene crRNA, NS-crRNA: assay performed with non-specific crRNA. Values are shown as mean \pm SD (n=4).



Supplementary Figure 4: Cas12a detection of SARS-CoV-2 RNA extracted from 24 patient samples using *E* gene assay

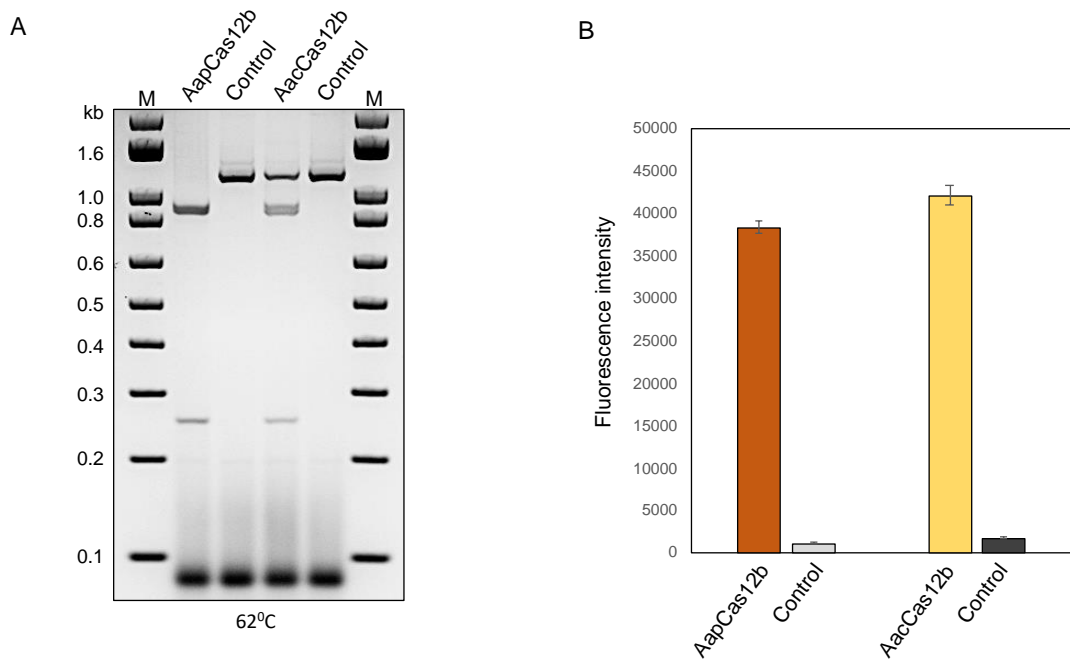
- A) RT-LAMP amplification product of E-gene. Positive control: RT-LAMP with synthetic RNA. NTC: No template control.
- B) Cas12a-based fluorescence detection performed with E-gene crRNA. Values are shown as mean \pm SD (n=3).



Supplementary Figure 5: Cas12a detection of SARS-CoV-2 RNA extracted from 24 patient samples using the *N* gene assay

A) Visual readout of the results using lateral flow strips

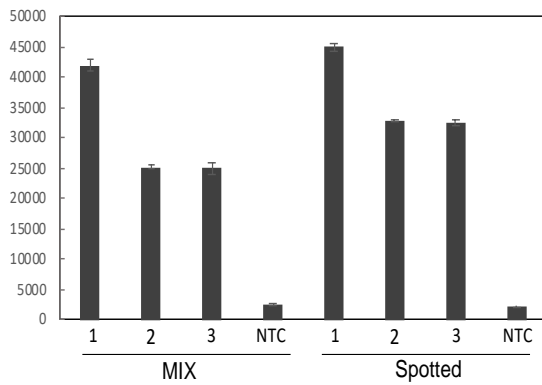
B) Visualization of RT-LAMP generated amplification products in agarose gel.



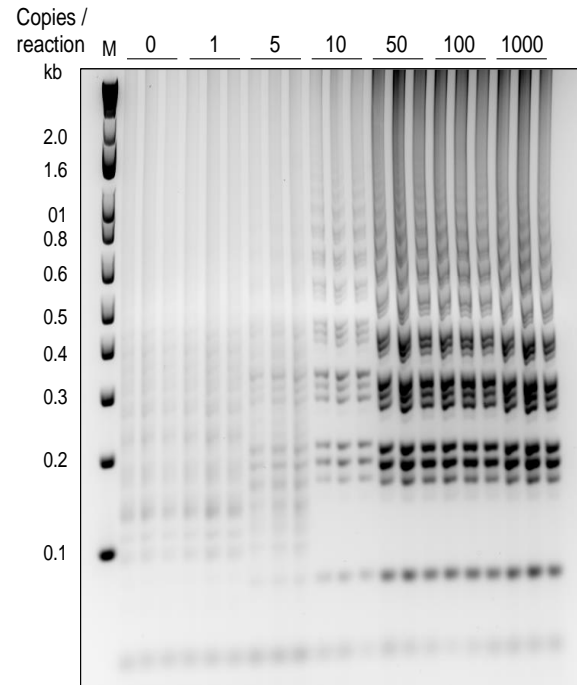
Supplementary Figure 6: AapCas12b and AacCas12b cis- and trans cleavage activity assay

- A) AapCas12b and AacCas12b cis cleavage activity assay performed at 62°C for 30 minutes
- B) AapCas12b and AacCas12b trans cleavage activity assay. Values shown as mean \pm SD (n=3).

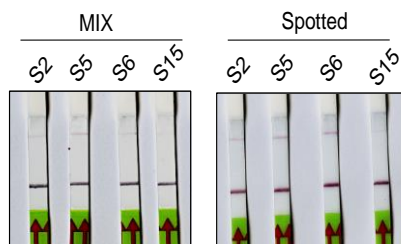
A



B



C



Supplementary Figure 7: Optimization of Cas12b detection activity

- A) Comparison between the spotted one-pot and all mixed one-pot reactions for detection of SARS-CoV-2 synthetic RNA. NTC: No template control. Values are shown as mean \pm SD (n=3).
- B) Determination of Cas12b spotted one-pot LoD using synthetic RNA in a serial dilution series.
- C) Representatives of lateral flow readouts for detection of SARS-CoV-2 in 4 clinical samples with spotted one-pot Cas12b detection.

Supplementary Table 1: LAMP Primers

Primer Name	Sequence	Targeted region
Gene N-B-F3 *	ACCGAAGAGCTACCAGACG	N gene-1
Gene N-B-B3 *	TGCAGCATTGTTAGCAGGAT	N gene-1
Gene N-B-FIP *	TCTGGCCCAGTTCCTAGGTAGTTCGTGGTGGTGACGGTAA	N gene-1
Gene N-B-BIP*	AGACGGCATCATATGGGTTGCACGGGTGCCAATGTGATCT	N gene-1
Gene N-B-LF *	CCATCTTGGACTGAGATCTTTCATT	N gene-1
Gene N-B-LB *	ACTGAGGGAGCCTTGAATACA	N gene-1
F3-N3-1	CCGAAGAGCTACCAGACGAA	N gene-2
B3-N3-1	TGTAGCACGATTGCAGCATT	N gene-2
FIP-N3-1	TCTGGCCCAGTTCCTAGGTAGTGGTGGTGACGGTAAAATGAAAG	N gene-2
BIP-N3-1	AGACGGCATCATATGGGTTGCACGGGTGCCAATGTGATCT	N gene-2
LF-N3-1	AGAAATACCATCTTGGACTGAG	N gene-2
LB-N3-1	ACTGAGGGAGCCTTGAATACAC	N gene-2
F3-E-2	GTA CTCATTTCGTTTCGGAAG	E gene
B3-E-1	AGGAACTCTAGAAGAATTCAGAT	E gene
FIP-E-2	GGATGGCTAGTGTA ACTAGCAAGGGTACGTTAATAGTTAATAGCGT	E gene
BIP-E-2	CGCTTCGATTGTGTGCGTACGAGAGTAAACGTAAAAAGAAGGTT	E gene
LF-E-2	ACCACGAAAGCAAGAAAAAG	E gene
LB-E-1	GCTGCAATATTGTTAACGTGAGTCT	E gene

* Primers used in [1].

Supplementary Table 2: Primers used to for *in vitro* transcription and PCR amplification of target genes.

Primer Name	Sequence	Purpose
N gene-F	GAAATTAATACGACTCACTATAGGGAG GCTTCTAAGAAGCCTCGGC	To PCR amplify N gene-2 out of IDT kit control.
N gene-R	GGCTCTGTTGGTGGGAATG	To PCR amplify N gene-2 out of IDT kit control.
T7-3G IVT primer	GAAATTAATACGACTCACTATAGGG	<ul style="list-style-type: none"> - To anneal with Cas12a crRNA oligos for <i>in vitro</i> transcription - To use as F primer to amplify Cas12b sgRNAs

Supplementary Table 3: SARS-CoV-2 gBlocks targeted sequences

E gene	<p>gaaattaatacgactcactataggGGGAACCAATTTATGATGAACCGACGACGACTA CTAGCGTGCCCTTTGTAAGCACAAAGCTGATGAGTACGAACTTATGTACTCA TTCGTTTCGGAAGAGACAGGTACGTTAATAGTTAATAGCGTACTTCTTTT TCTTGCTTTCGTGGTATTCTTGCTAGTTACACTAGCCATCCTTACTGCGCT TCGATTGTGTGCGTACTGCTGCAATATTGTTAACGTGAGTCTTGTA AAACCTTCTTTTACGTTACTCTCGTGTTAAAAATCTGAA</p>
---------------	---

Supplementary Table 4: LbCas12a crRNAs and Cas12b sgRNAs

Cas Enzyme	gRNA Sequence 5`-3`	Genomic Region
LbCas12a	GTA ACTAGCAAGAATACCACATCTACACTTAGTAGAA ATTACCCTATAGTGAGTCGTATTAATTTC	E gene
	GGACTTCCCTATGGTGCTAAATCTACACTTAGTAGAA ATTACCCTATAGTGAGTCGTATTAATTTC	N gene
Cas12b	ATATTGCAGCAGTACGCACAGTGCCACTTCTCAGATT TGAG	E gene
	GCTGGACTTCCCTATGGTGCGTGCCACTTCTCAGATT GAG	N gene
Cas12b scaffold-F	GAAATTAATACGACTCACTATAGGGTCTAGAGGACA GAATTTTTCAACGGGTGTGCCAATGGCCACTTTCCAG GTGGCAAAGCCCGTTGAGCTTc _t caaatctgaGAAGTGGCA C	
Cas12b scaffold-R	GTGCCACTTc _t cagatttgaGAAGCTCAACGGGCTTTGCCA CCTGGAAAGTGGCCATTGGCACACCCGTTGAAAAATT CTGTCCTCTAGACCCTATAGTGAGTCGTATTAATTTC	

Reference

1. Zhang, Y., et al., *Rapid Molecular Detection of SARS-CoV-2 (COVID-19) Virus RNA Using Colorimetric LAMP*. medRxiv, 2020.