

Fig. S1

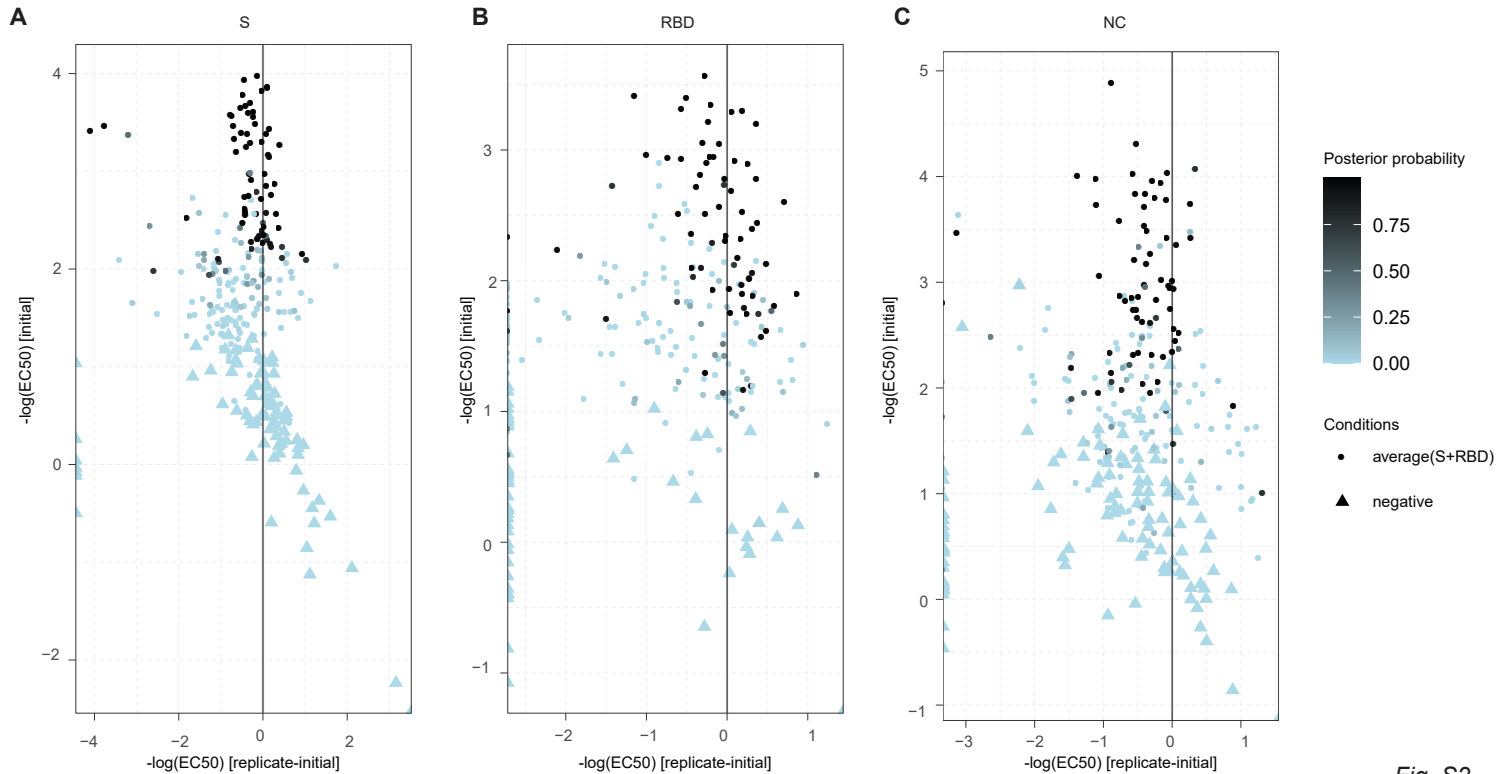


Fig. S2

Immobilization with NC

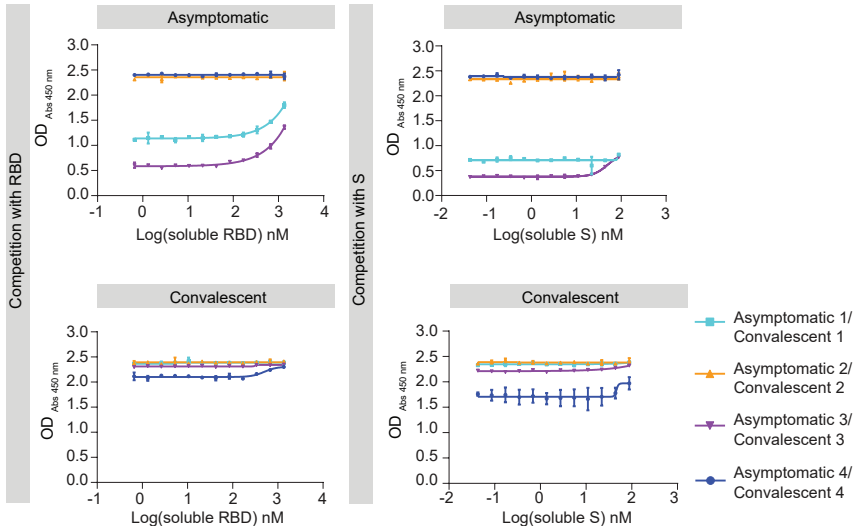


Fig. S3

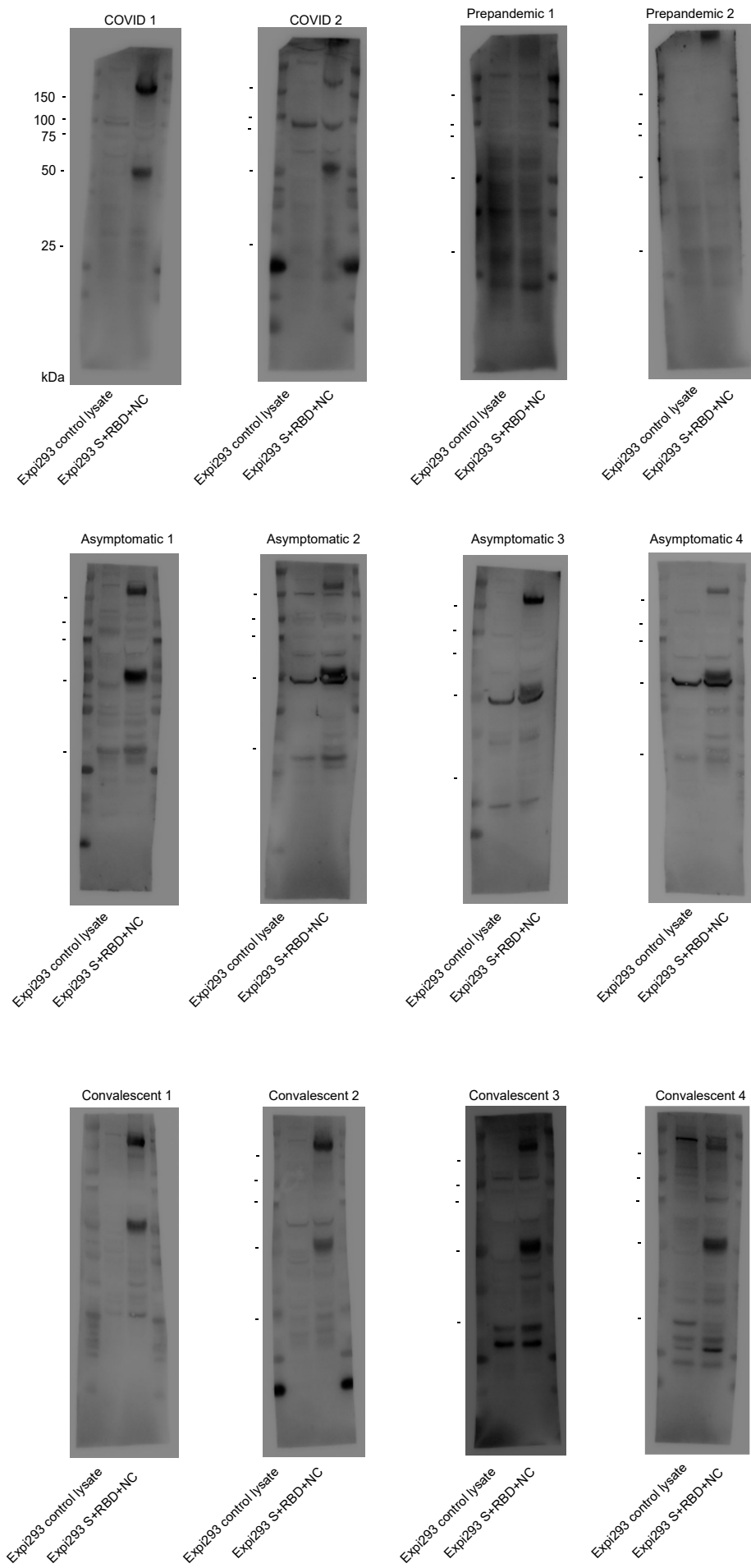


Fig. S4

Cohort	Characteristic	P>0.5			P≤0.5			Total		
		M	F	Tot	M	F	Tot	M	F	Tot
USZ Samples*	Sample analysed - no.	30	14	44	5,701	4,944	10,645	5,731	4,958	10,689
	Median Age (IQR) - yr.	58 (51 - 62)	58 (40 - 62)	58 (49 - 62)	59 (45 - 70)	53 (38 - 67)	56 (41 - 69)	59 (45 - 70)	53 (38 - 67)	56 (41 - 69)
USZ Patients	Patient analysed -no.	24	14	38	5,206	4,566	9,772	5,230	4,580	9,810
	Median Age (IQR) - yr.	59 (53 - 64)	58 (40 - 62)	59 (51 - 63)	59 (45 - 70)	52 (38 - 67)	56 (41 - 69)	59 (45 - 70)	52 (38 - 67)	56 (41 - 69)
BDS Samples**	Sample analysed - no. (%)	39	11	50	1,049	784	1,833	1,088	795	1,883
	Median Age (IQR) - yr.	37 (25 - 49)	42 (24 - 54)	38 (24 - 51)	46 (32 - 55)	39 (26 - 52)	43 (29 - 54)	45 (32 - 55)	39 (26 - 52)	43 (29 - 54)
USZ test cohort	Sample analysed - no. (%)	35	21	56	-	-	90	-	-	146
	Median Age (IQR) - yr.	63 (52 - 67)	70 (55 - 80)	63 (53 - 73)	-	-	NA	-	-	NA

*10,689 / 11,220 samples with data (gender and age of the patient) available

**Age and gender of 1,883 donors of April, May, and of convalescents available

IQR = interquartile range

Table S1