

## Legionnaires' disease on the rise in Switzerland: A denominator-based analysis of national diagnostic data, 2007-2016

Fabienne B. Fischer<sup>1,2</sup>, Claudia Schmutz<sup>1,2</sup>, Valeria Gaia<sup>3</sup>, Daniel Mäusezahl<sup>1,2,\*</sup>

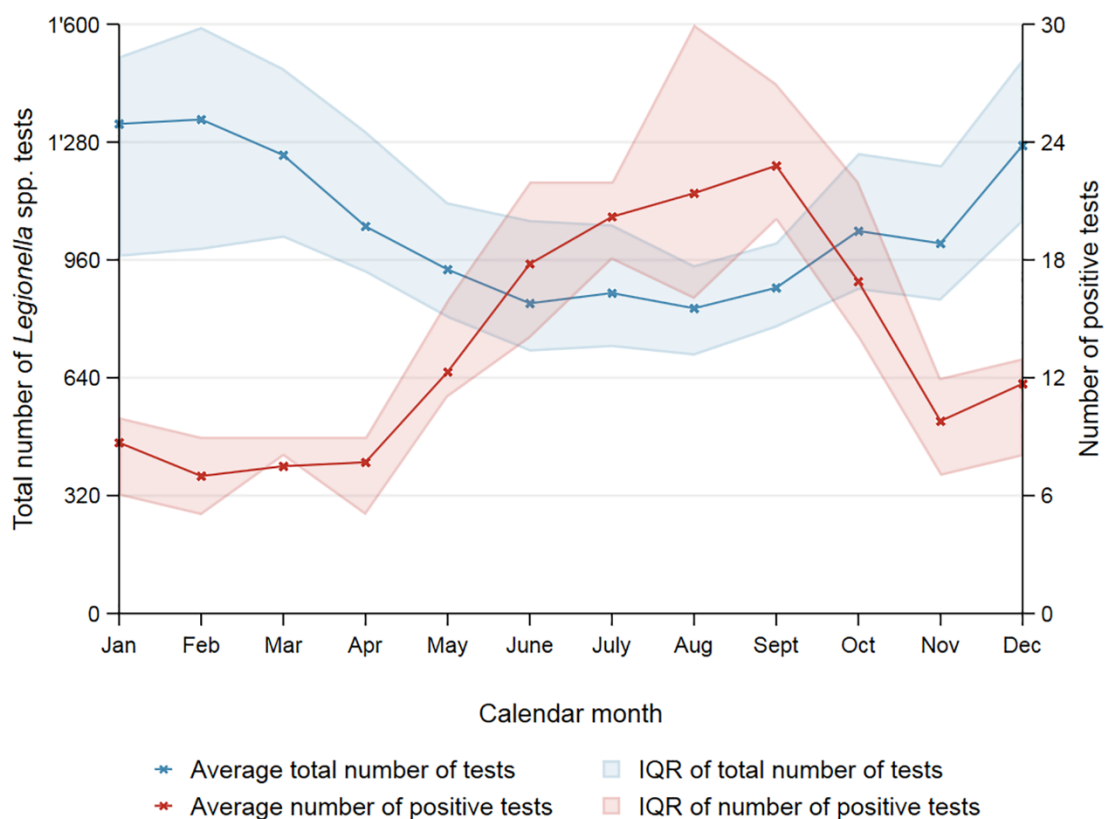
<sup>1</sup> Swiss Tropical and Public Health Institute, Basel, Switzerland

<sup>2</sup> University of Basel, Switzerland, Switzerland

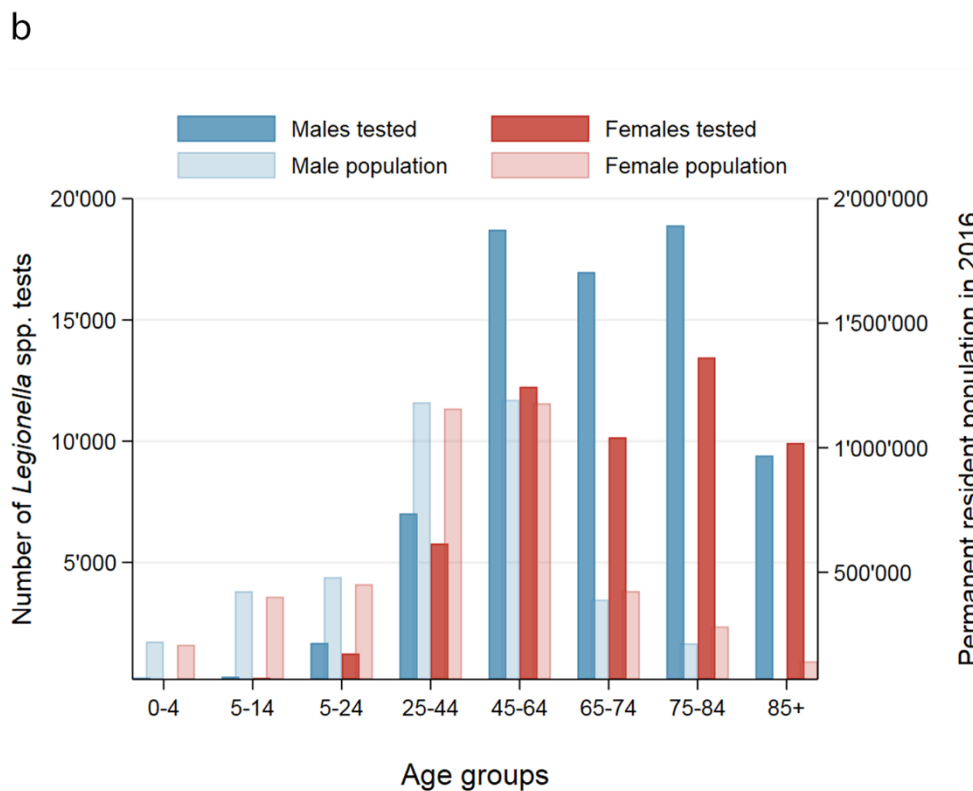
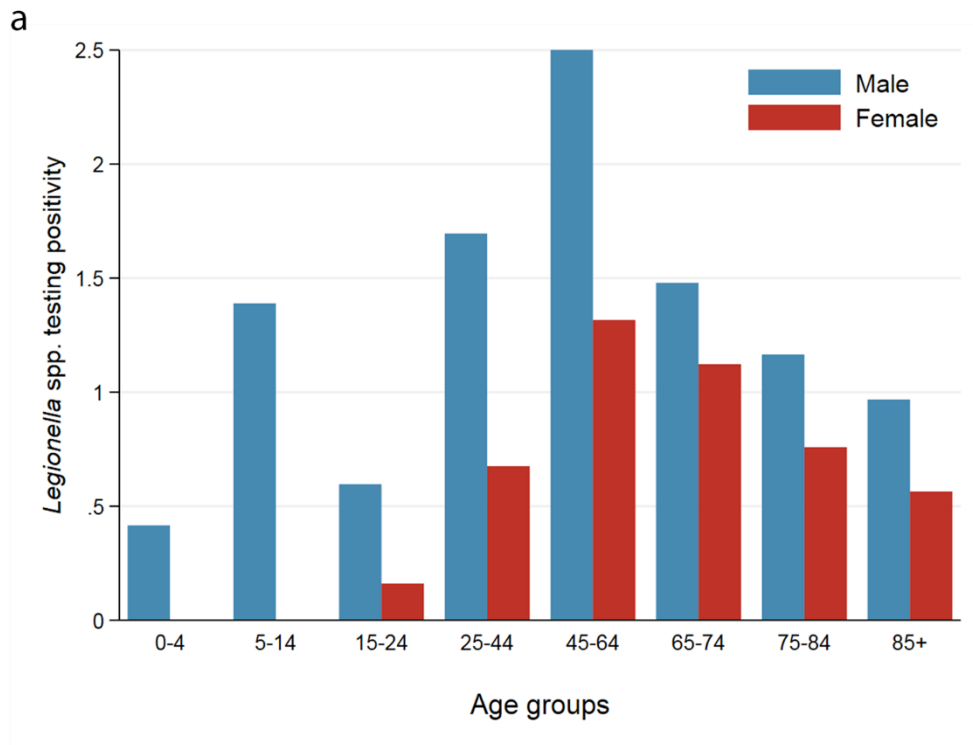
<sup>3</sup> National Reference Center for Legionella, Service of microbiology, Ente Ospedaliero Cantonale, Bellinzona, Switzerland

\* Author for correspondence: Dr Daniel Mäusezahl; E-mail: [daniel.maeusezahl@unibas.ch](mailto:daniel.maeusezahl@unibas.ch); Tel.: +41 61 284 8178

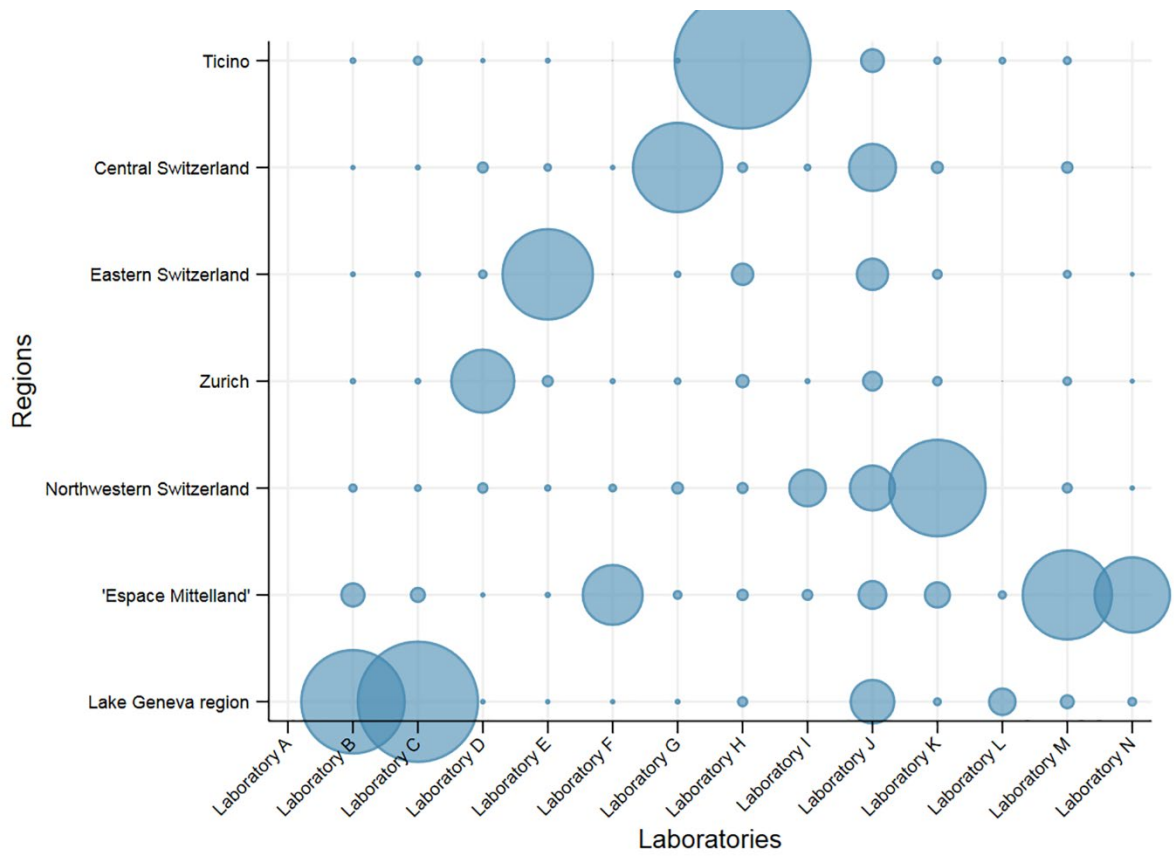
### SUPPLEMENTARY MATERIAL: ADDITIONAL FIGURES



**Supplementary Fig 1 Seasonality in test volume and cases** The average and interquartile range (IQR) per calendar month of the total number of Legionella spp. tests and number of positive tests, Switzerland, 2007-2016



**Supplementary Fig 2 Age distribution in test volume and positivity** a: Positivity of Legionella spp. testing by sex and age groups, Switzerland, 2007-2016. b: Number of Legionella spp. tests performed by sex and age groups in Switzerland (2007-2016) and permanent resident population in Switzerland (2016) by sex and age groups



**Supplementary Fig 3 Correlation of laboratories and region** Correlation between the variables “greater region” and “laboratory” included in the *Legionella* spp. positivity study, Switzerland, 2007-2016