

APPENDIX: SUPPLEMENTARY FIGURES AND RESULTS

Title: Adherence to home-based videogame treatment for amblyopia in children and adults

Authors: Tina Y. Gao, Joanna M. Black, Rajju J. Babu, William R. Bobier, Arijit Chakraborty, Shuan Dai, Cindy X. Guo, Robert F. Hess, Michelle Jenkins, Yannan Jiang, Lisa S. Kearns, Lionel Kowal, Carly S. Y. Lam, Peter C. K. Pang, Varsha Parag, Roberto Pieri, Rajkumar Nallour Raveendren, Jayshree South, Sandra Elfride Staffieri, Angela Wadham, Natalie Walker, Benjamin Thompson, on behalf of the BRAVO study team.

Table of contents:

Figure S1: Average game scores

Figure S2: Training days proportion

Figure S3: Training days adherence

Figure S4: Adherence across the 6-week training period for the Children 7-12 years age group.

Figure S5: Adherence across the 6-week training period for the Teenagers 13-17 years age group.

Figure S6: Adherence across the 6-week training period for the Adults ≥ 18 years age group.

Figure S7: Videogame training adherence across the week.

Figure S8: Detailed videogame training adherence patterns across times of day.

For **Figures S1-S3**:

- The box-plots show the range, quartiles, and median for each group.
- Black crosses indicate the mean value for each group.
- Circles or diamonds represent individual participant data.
- Two-way ANOVA with factors of Treatment Group (Active versus Placebo) and Age Group (Children, Teenager, Adult) were conducted for each variable illustrated. Statistically significant differences are labelled by their p-values.

Figure S1: Average game scores

Scores achieved per game of Tetris, averaged across the 6-week training period.

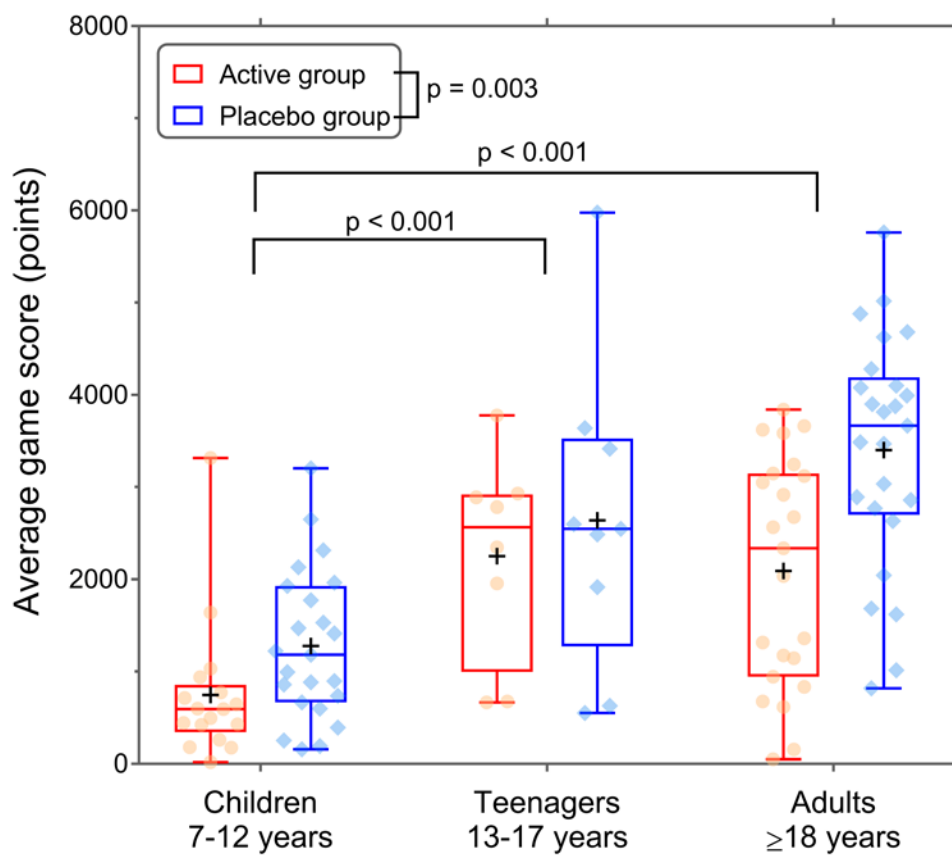


Figure S2: Training days proportion

Proportion of days within the 6-week training period that the game was played (for any length of time).

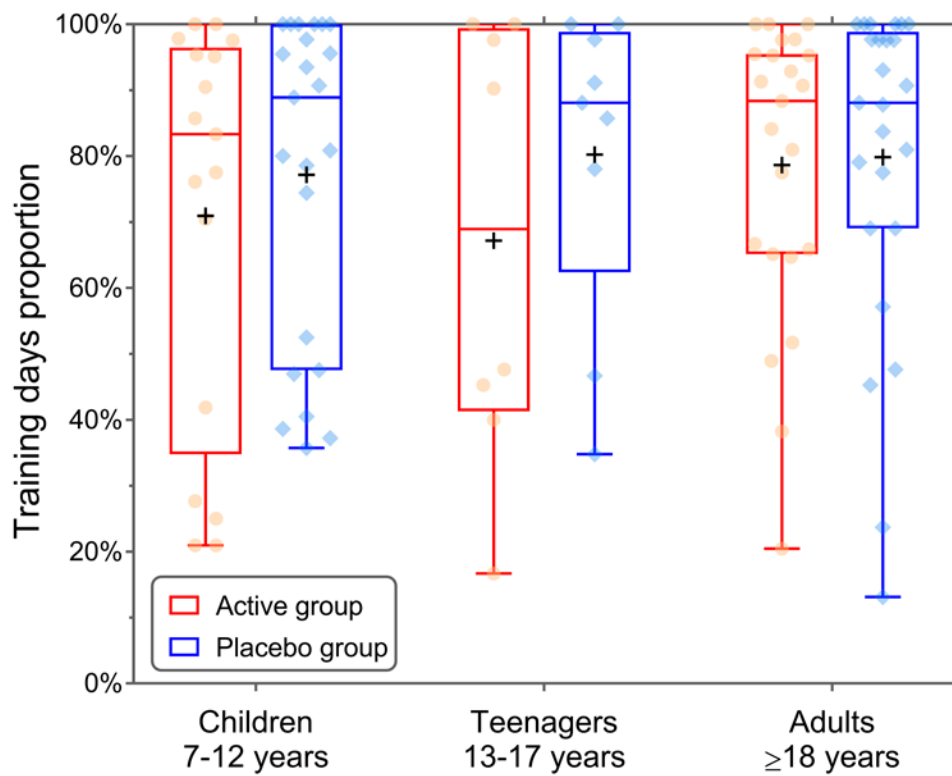
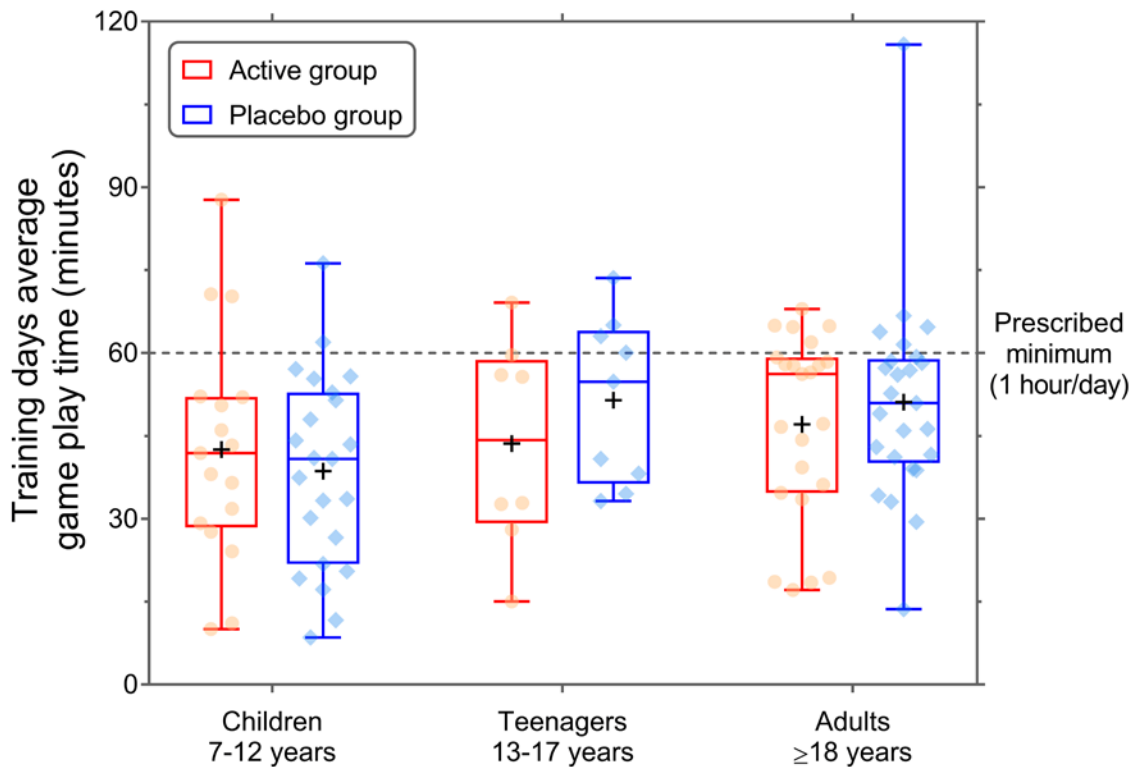


Figure S3: Training days adherence

Average adherence on days when participants played the game.



Figures S4-S6 show the daily videogame adherence patterns across the 6-week training period for the three age groups.

- **Panels A, Daily adherence:** Cumulative game playing time per day. The dashed grey line indicate the minimum prescribed dose of 1 hour (60 minutes) per day. The 6-week training period formally began from day 2 from randomization and continued to day 43 inclusive.

Participants were not required to play the minimum of 1 hour on day 1 as they may have only collected their allocated game device in the afternoon or evening that day, which did not allow sufficient time to complete 1 hour of gameplay. A number of participants also had their initial assessment conducted on day 1 and collected their allocated game device immediately after, but were unable to play due to blurry vision from the cycloplegic eye drops used during the vision assessment. The effects of the eye drops wore off within 24 hours, so these participants were instructed to begin playing the game from day 2.

- **Panels B, Proportion Trained:** Proportion trained shows the percentage of participants who played their training game on the day.
- **Panels C, Training Days Adherence:** Adherence in minutes of game play for only the participants who did perform training on that day.
- In Panels A and C, the blue line indicate the daily mean values. Box-plots show quartiles and medians, and the whiskers extend for the full range of the data.

Figure S4: Adherence across the 6-week training period for the Children 7-12 years age group.

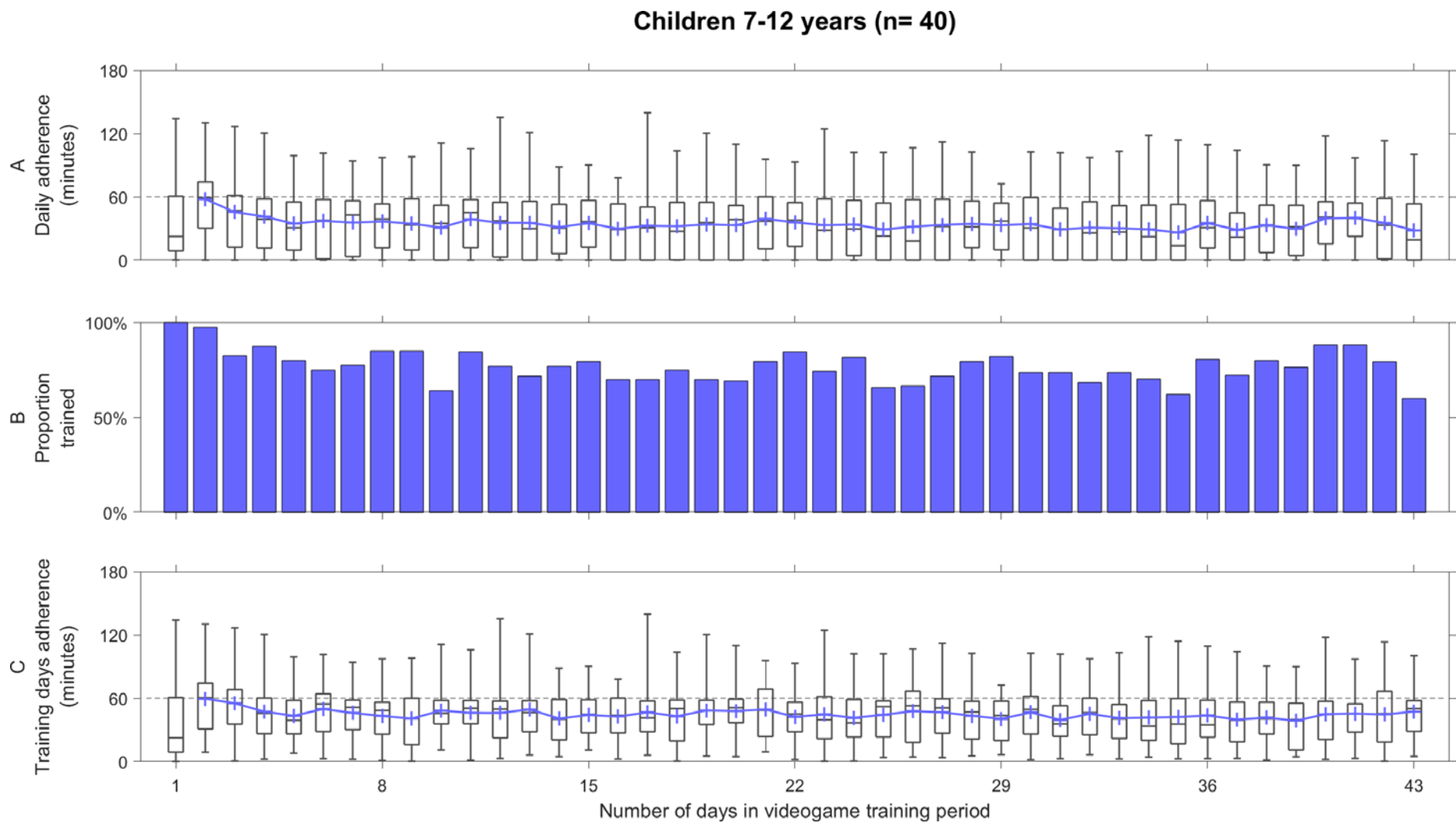


Figure S5: Adherence across the 6-week training period for the Teenagers 13-17 years age group.

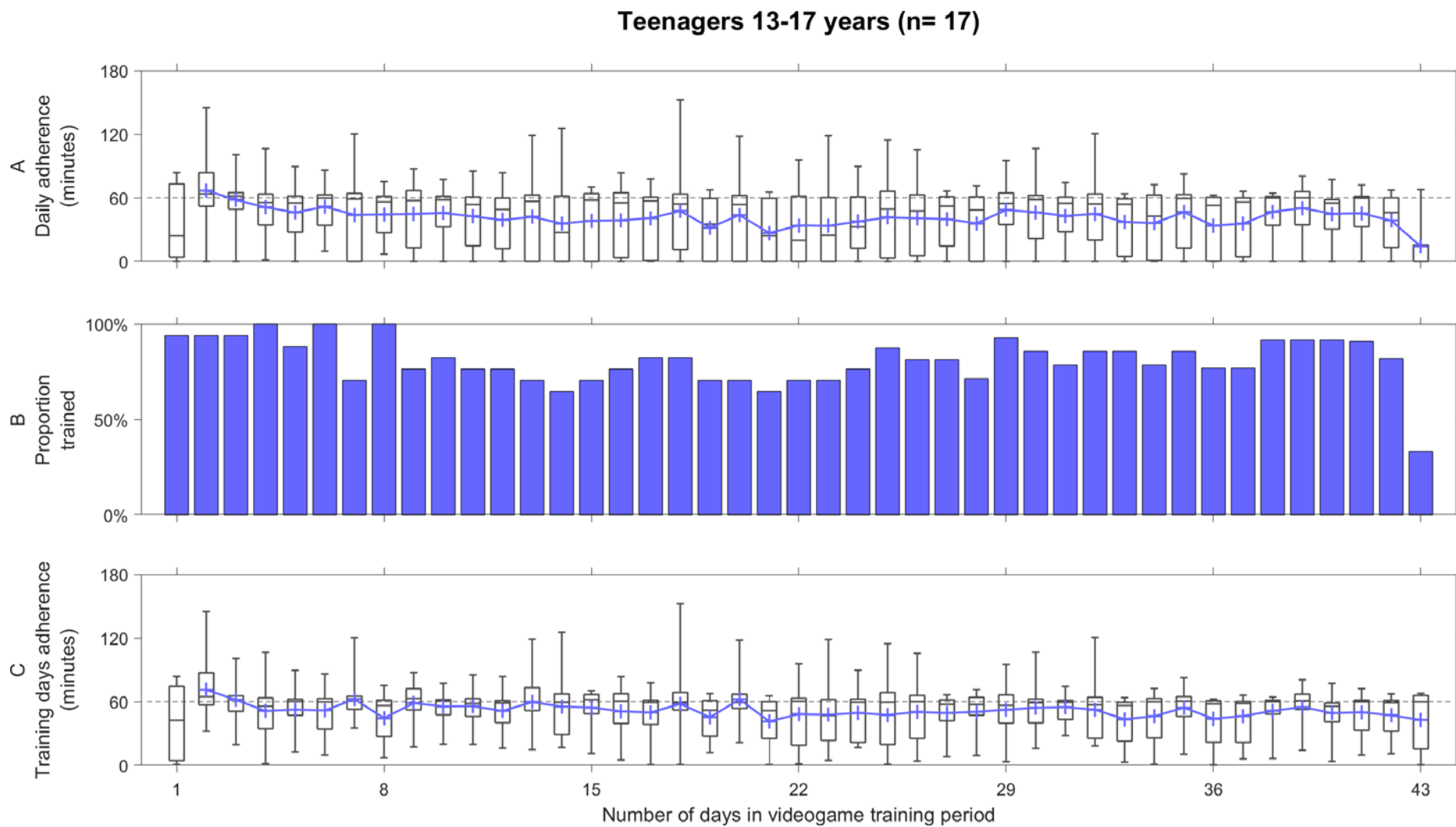


Figure S6: Adherence across the 6-week training period for the Adults ≥ 18 years age group.

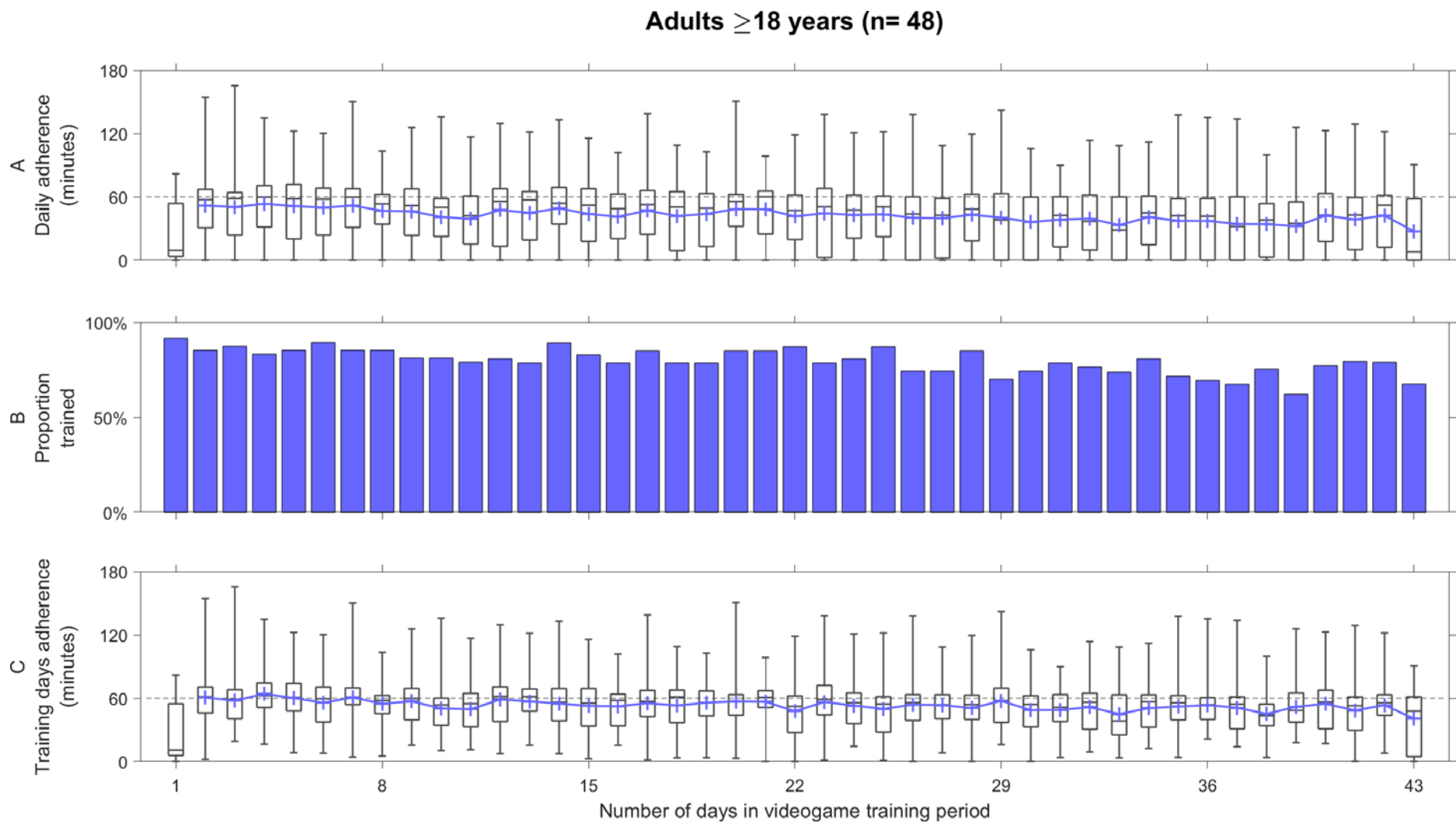


Figure S7: Videogame training adherence across the week.

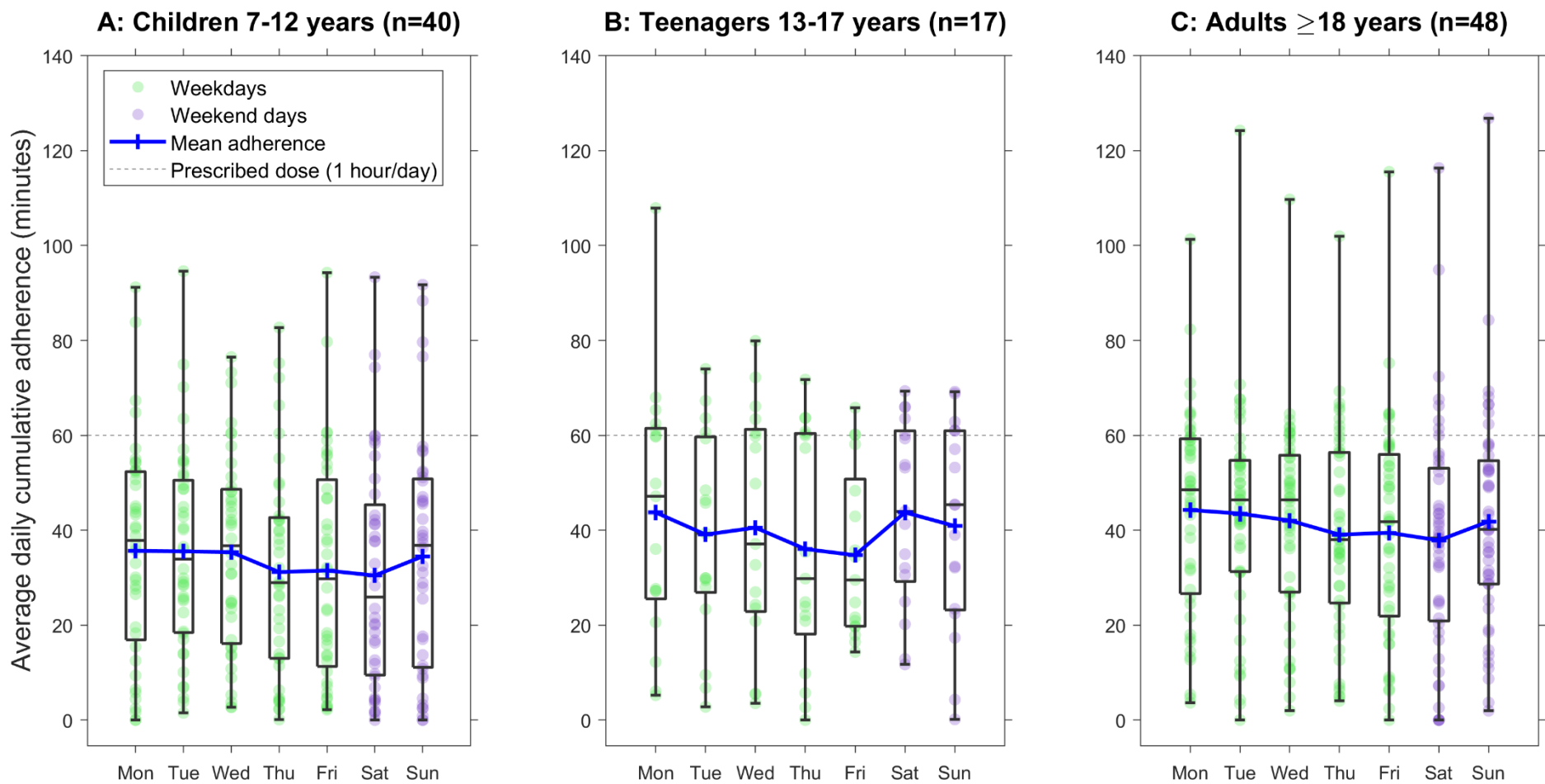


Figure S8: Detailed videogame training adherence patterns across times of day.

