

Supplement

Impact of Proactive Integrated Care on Chronic Obstructive Pulmonary Disease

Patricia B. Koff, RRT, MEd^{1*}, Sung-joon Min, PhD^{2*}, Debora L. P. Diaz¹, Tammie J. Freitag, RN, BSN¹, Shannon S. James, RN, BSN¹, Norbert F. Voelkel, MD¹, Derek J. Linderman, MD¹, Fernando Diaz del Valle, MD¹, Richard K. Albert MD¹, Todd M. Bull MD¹, Arne Beck, PhD³, Thomas J. Stelzner, MD³, Debra P. Ritzwoller, PhD³, Christine M. Kveton, RRT³, Stephanie Carwin, RRT³, Moumita Ghosh, PhD⁴, Robert L. Keith, MD^{1, 5}; John M. Westfall, MD⁶ and R. William Vandivier, MD¹.

¹Division of Pulmonary Sciences and Critical Care Medicine, Colorado Pulmonary Outcomes Research Group (CPOR) and ²Division of Health Care Policy and Research, Department of Medicine, University of Colorado Denver, Anschutz Medical Campus, Aurora, CO; ³Institute for Health Research, Kaiser Permanente Colorado, Denver, Colorado; ⁴National Jewish Health, Denver, CO, ⁵Denver Veterans Administration Medical Center, Denver, Colorado; ⁶Department of Family Medicine, High Plains Research Network, University of Colorado Denver, Anschutz Medical Campus.

*Authors contributed equally to the study.

TABLES

Supplementary Table 1. Completers Versus Non-Completers*

Characteristics	Non-Completers N = 122	Completers N = 389
Age, yr	68.0 (9.8)	68.4 (8.6)
Gender, % female	41.0	38.8
Race & Ethnicity		
Caucasian, %	87.7	92.8
Non-Caucasian, %	12.3	7.2
BMI	26.4 (5.4)	26.4 (6.0)
FEV ₁ , % predicted	36.9 (13.7)	36.7 (13.4)
mMRC dyspnea score	2.0 (1.0)	1.9 (1.0)
Six minute walk distance, m	255.7 (117.5)	274.9 (116.2)
BODE index	4.9 (2.1)	4.7 (2.0)
Current smoker, %	32.0	17.7
Smoking history, pack-yr	56.8 (31.4)	58.9 (33.3)
Current or prior pulmonary rehabilitation, %	21.3	35.7
Lives alone, %	27.0	30.1
Education, yr	13.0 (2.5)	13.5 (2.5)
Influenza vaccination, %	89.3	94.3
Pneumococcal vaccination, %	76.2	83.8
Long-term O ₂ therapy, %	82.0	81.5
Resting O ₂ , L	1.8 (1.5)	1.8 (1.6)

Post-exercise O ₂ , L	2.5 (2.1)	2.7 (2.0)
Sleep O ₂ , L	2.1 (1.3)	2.1 (1.5)
Resting SpO ₂ , %	93.3 (2.9)	92.7 (2.9)
Post-exercise SpO ₂ , %	87.6 (5.4)	87.8 (4.9)
Medications		
SABA, %	90.2	92.3
LABA, %	54.1	56.0
SAMA, %	54.1	40.1
LAMA, %	39.3	46.5
ICS, %	63.1	72.2
Theophylline, %	4.1	9.0
Co-morbidities		
Hypertension, %	54.9	56.3
Congestive heart failure, %	27.9	15.4
Diabetes, %	16.4	15.2
Obstructive sleep apnea, %	16.4	16.5
Prior year healthcare utilization (COPD)		
ED visits, visits/patient	1.07 (1.91)	0.58 (1.20)
Hospitalizations, visits/patient	0.79 (1.53)	0.42 (1.07)
ICU hospitalizations, visits/patient	0.19 (0.54)	0.10 (0.41)
ICU hospitalizations with ventilation, visits/patient	0.15 (0.57)	0.07 (0.32)
Hospital LOS, days	3.70 (7.75)	1.97 (5.36)
Urgent office visits, visits/patient	1.17 (2.45)	0.99 (1.99)
Prior year healthcare utilization (non-COPD)		
ED visits, visits/patient	0.18 (0.56)	0.21 (0.52)
Hospitalizations, visits/patient	0.15 (0.49)	0.13 (0.40)
Hospital LOS, days	0.64 (2.71)	0.61 (2.71)
Urgent office visits, visits/patient	0.39 (1.31)	0.25 (0.65)
SGRQ Scores		
Total	49.3 (16.8)	47.7 (16.4)
Symptom	57.2 (21.2)	56.0 (21.0)
Activity	67.4 (20.4)	67.6 (19.7)
Impact	36.5 (19.0)	33.7 (17.2)

*The only significant differences in baseline characteristics between the two groups were the proportion of patients who were current smokers ($p = 0.0008$), had been treated with pulmonary rehabilitation ($p = 0.003$), used short-acting muscarinic antagonists ($p = 0.007$), had congestive heart failure ($p = 0.002$), and measures of education ($p = 0.04$), resting SpO₂, % ($p = 0.049$), and prior year COPD-related emergency department visits ($p = 0.003$), hospitalizations ($p = 0.002$), ICU hospitalizations ($p = 0.03$) and hospital length of stay ($p = 0.002$). Data are presented as mean (SD) unless otherwise stated.

Definition of abbreviations: mMRC = modified medical research council, 6MWD = 6 minute walk distance, LAMA = long-acting muscarinic antagonist, SAMA = short-acting muscarinic antagonist, LABA = long-acting beta-agonist, ICS = inhaled corticosteroid, ED = emergency department, ICU = intensive care unit, LOS = length of stay, SGRQ = St. Georges Respiratory Questionnaire

T-tests (or Wilcoxon tests) were used for continuous variables and chi-square tests (or Fisher's exact tests) were used for categorical variables.

Supplementary Table 2. Baseline Characteristics for Completers*

Characteristics	Usual Care N = 140	Proactive iCare N = 249
Age, yr	68.8 (9.0)	68.2 (8.5)
Gender, % female	32.9	42.2
Race & Ethnicity		
Caucasian, %	93.6	92.4
Non-Caucasian, %	6.4	7.6
BMI, units	26.1 (5.4)	26.6 (6.3)
FEV ₁ , % predicted	37.5 (14.2)	36.3 (13.0)
mMRC dyspnea score, units	1.9 (1.0)	1.9 (1.0)
Six minute walk distance, m	276.8 (128.3)	273.8 (109.1)
BODE index, units	4.6 (2.1)	4.8 (2.0)
Current smoker, %	16.4	18.5
Smoking history, pack-yr	56.4 (34.6)	58.6 (32.6)
Current or prior pulmonary rehabilitation, %	31.4	38.2
Lives alone, %	28.6	30.9
Education, yr	13.5 (2.6)	13.5 (2.5)
Influenza vaccination, %	94.3	94.4
Pneumococcal vaccination, %	87.1	81.9
Long-term O ₂ therapy, %	76.4	84.3
Resting O ₂ , L	1.8 (1.7)	1.8 (1.6)
Post-exercise O ₂ , L	2.5 (2.0)	2.8 (2.0)
Sleep O ₂ , L	2.0 (1.5)	2.2 (1.5)
Resting SpO ₂ , %	92.6 (2.4)	92.8 (3.2)
Post-exercise SpO ₂ , %	87.9 (4.7)	87.7 (5.1)
Medications		
SABA, %	90.7	93.2
LABA, %	50.0	59.4
SAMA, %	49.3	34.9
LAMA, %	38.6	51.0
ICS, %	63.6	77.1
Theophylline, %	9.3	8.8
Co-morbidities		
Hypertension, %	55.7	56.6
Congestive heart failure, %	18.6	13.7
Diabetes, %	14.3	15.7
Obstructive sleep apnea, %	12.9	18.5
Prior year healthcare utilization (COPD)		
ED visits, visits/patient	0.47 (1.19)	0.63 (1.20)
Hospitalizations, visits/patient	0.34 (0.79)	0.47 (1.19)
ICU hospitalizations, visits/patient	0.08 (0.42)	0.12 (0.41)
ICU hospitalizations with ventilation, visits/patient	0.07 (0.39)	0.07 (0.27)
Hospital LOS, days	1.64 (4.57)	2.17 (5.76)
Urgent office visits, visits/patient	0.67 (1.15)	1.16 (2.32)
Prior year healthcare utilization (non-		

COPD)

ED visits, visits/patient	0.23 (0.57)	0.20 (0.49)
Hospitalizations, visits/patient	0.13 (0.38)	0.12 (0.41)
Hospital LOS, days	0.46 (1.76)	0.69 (3.12)
Urgent office visits, visits/patient	0.26 (0.68)	0.25 (0.63)

SGRQ Scores

Total	45.4 (18.2)	48.9 (15.2)
Symptom	53.7 (22.7)	57.3 (20.0)
Activity	65.4 (21.2)	68.8 (18.7)
Impact	31.5 (18.9)	35.0 (16.1)

*The only significant differences in baseline characteristics between the two trial groups were the proportion of patients using short-acting muscarinic antagonists ($p = 0.006$), long-acting muscarinic antagonists ($p = 0.02$) or inhaled corticosteroids ($p = 0.004$), and prior year COPD-related emergency department visits ($p = 0.03$) and urgent office visits ($p = 0.03$). Data are presented as mean (SD) unless otherwise stated.

Definition of abbreviations: mMRC = modified medical research council, 6MWD = 6 minute walk distance, LAMA = long-acting muscarinic antagonist, SAMA = short-acting muscarinic antagonist, LABA = long-acting beta-agonist, ICS = inhaled corticosteroid, ED = emergency department, ICU = intensive care unit, LOS = length of stay, SGRQ = St. Georges Respiratory Questionnaire

T-tests (or Wilcoxon tests) were used for continuous variables and chi-square tests (or Fisher's exact tests) were used for categorical variables.

Supplementary Table 3. Comparison of Urban and Rural Baseline Differences*

Characteristics	Urban N = 403	Rural N = 108
Age, yr	68.3 (9.0)	68.4 (8.8)
Gender, % female	39.2	39.8
Race & Ethnicity		
Caucasian, %	90.8	94.4
Non-Caucasian, %	9.2	5.6
BMI, units	26.5 (5.9)	26.3 (5.8)
FEV ₁ , % predicted	36.7 (13.1)	37.1 (14.8)
mMRC dyspnea score, units	1.9 (0.9)	1.9 (1.1)
Six minute walk distance, m	272.9 (115.0)	261.0 (123.1)
BODE index, units	4.7 (2.0)	4.8 (2.3)
Current smoker, %	19.6	26.9
Smoking history, pack-yr	58.1 (32.6)	59.5 (33.9)
Current or prior pulmonary rehabilitation, %	35.7	19.4
Lives alone, %	26.8	38.9
Education, yr	13.6 (2.3)	12.5 (3.0)
Influenza vaccination, %	94.3	88.9
Pneumococcal vaccination, %	81.9	82.4
Long-term O ₂ therapy, %	82.4	78.7
Resting O ₂ , L	1.8 (1.6)	1.7 (1.5)
Post-exercise O ₂ , L	2.7 (2.0)	2.3 (1.9)
Sleep O ₂ , L	2.2 (1.4)	2.0 (1.5)
Resting SpO ₂ , %	93.0 (2.6)	92.5 (3.8)
Post-exercise SpO ₂ , %	87.8 (4.9)	87.5 (5.5)
Medications		
SABA, %	93.5	85.2
LABA, %	56.1	53.7
SAMA, %	46.9	30.6
LAMA, %	44.4	46.3
ICS, %	71.7	63.9
Theophylline, %	7.9	7.4
Co-morbidities		
Hypertension, %	56.3	54.6
Congestive heart failure, %	17.1	23.1
Diabetes, %	16.1	13.0
Obstructive sleep apnea, %	15.1	21.3
Prior year healthcare utilization (COPD)		
ED visits, visits/patient	0.69 (1.35)	0.69 (1.64)
Hospitalizations, visits/patient	0.49 (1.00)	0.59 (1.77)
ICU hospitalizations, visits/patient	0.14 (0.49)	0.05 (0.21)
ICU hospitalizations with ventilation, visits/patient	0.10 (0.43)	0.04 (0.19)
Hospital LOS, days	2.33 (5.74)	2.60 (7.12)
Urgent office visits, visits/patient	1.04 (1.99)	0.98 (2.50)
Prior year healthcare utilization (non-		

COPD)

ED visits, visits/patient	0.18 (0.47)	0.28 (0.69)
Hospitalizations, visits/patient	0.12 (0.36)	0.17 (0.59)
Hospital LOS, days	0.50 (2.20)	1.04 (4.06)
Urgent office visits, visits/patient	0.32 (0.92)	0.16 (0.53)

SGRQ Scores

Total	48.1 (16.4)	47.8 (16.9)
Symptom	55.6 (21.4)	59.0 (19.7)
Activity	68.2 (19.5)	65.1 (21.0)
Impact	34.3 (17.7)	34.6 (17.8)

*The only significant differences in baseline characteristics between the two groups were the proportion of patients who had been treated with pulmonary rehabilitation ($p = 0.001$), living alone ($p = 0.01$), influenza vaccination ($p = 0.048$), use of short-acting beta-agonists ($p = 0.005$) or short-acting muscarinic antagonists ($p = 0.002$), measures of education ($p = 0.0003$), post-exercise O_2 (0.04), and prior year non-COPD-related urgent office visits ($p = 0.03$). Data are presented as mean (SD) unless otherwise stated.

Definition of abbreviations: mMRC = modified medical research council, 6MWD = 6 minute walk distance, LAMA = long-acting muscarinic antagonist, SAMA = short-acting muscarinic antagonist, LABA = long-acting beta-agonist, ICS = inhaled corticosteroid, ED = emergency department, ICU = intensive care unit, LOS = length of stay, SGRQ = St. Georges Respiratory Questionnaire

T-tests (or Wilcoxon tests) were used for continuous variables and chi-square tests (or Fisher's exact tests) were used for categorical variables.

Supplementary Table 4. Urban Baseline Characteristics*

Characteristics	Usual Care N = 130	Proactive iCare N = 273
Age, yr	68.1 (9.5)	68.4 (8.7)
Gender, % female	32.3	42.5
Race & Ethnicity		
Caucasian, %	92.3	90.1
Non-Caucasian, %	7.7	9.9
BMI, units	26.0 (5.4)	26.7 (6.1)
FEV ₁ , % predicted	36.7 (14.3)	36.7 (12.6)
mMRC dyspnea score, units	1.9 (0.9)	2.0 (0.9)
Six minute walk distance, m	274.2 (133.2)	272.2 (105.5)
BODE index, units	4.7 (2.1)	4.8 (1.9)
Current smoker, %	22.3	18.3
Smoking history, pack-yr	56.3 (31.9)	59.0 (33.0)
Current or prior pulmonary rehabilitation, %	35.4	35.9
Lives alone, %	24.6	27.8
Education, yr	13.6 (2.3)	13.7 (2.3)
Influenza vaccination, %	94.6	94.1
Pneumococcal vaccination, %	83.9	81.0
Long-term O ₂ therapy, %	76.9	85.0
Resting O ₂ , L	1.9 (1.8)	1.8 (1.5)
Post-exercise O ₂ , L	2.7 (2.2)	2.8 (2.0)
Sleep O ₂ , L	2.2 (1.5)	2.2 (1.4)
Resting SpO ₂ , %	92.7 (2.6)	93.2 (2.7)
Post-exercise SpO ₂ , %	88.0 (4.5)	87.8 (5.1)
Medications		
SABA, %	92.3	94.1
LABA, %	51.5	58.2
SAMA, %	56.2	42.5
LAMA, %	36.2	48.4
ICS, %	63.9	75.5
Theophylline, %	10.0	7.0
Co-morbidities		
Hypertension, %	56.9	56.0
Congestive heart failure, %	21.5	15.0
Diabetes, %	16.2	16.1
Obstructive sleep apnea, %	13.1	16.1
Prior year healthcare utilization (COPD)		
ED visits, visits/patient	0.55 (1.25)	0.76 (1.40)
Hospitalizations, visits/patient	0.39 (0.85)	0.54 (1.06)
ICU hospitalizations, visits/patient	0.11 (0.45)	0.16 (0.50)
ICU hospitalizations with ventilation, visits/patient	0.09 (0.41)	0.11 (0.44)
Hospital LOS, days	1.87 (4.71)	2.55 (6.17)
Urgent office visits, visits/patient	0.73 (1.27)	1.19 (2.24)
Prior year healthcare utilization (non-		

COPD)

ED visits, visits/patient	0.22 (0.56)	0.17 (0.43)
Hospitalizations, visits/patient	0.12 (0.35)	0.12 (0.37)
Hospital LOS, days	0.34 (1.25)	0.53 (2.53)
Urgent office visits, visits/patient	0.25 (0.69)	0.35 (1.02)

SGRQ Scores

Total	45.6 (18.1)	49.3 (15.5)
Symptom	53.6 (22.7)	56.6 (20.7)
Activity	65.7 (21.1)	69.3 (18.6)
Impact	31.7 (19.2)	35.6 (16.9)

*The only significant differences in baseline characteristics between the two trial groups were the proportion of patients using long-term oxygen therapy ($p = 0.047$), short-acting muscarinic antagonists ($p = 0.01$), long-acting muscarinic antagonists ($p = 0.02$) or inhaled corticosteroids ($p = 0.02$), and measures of prior year COPD-related urgent office visits ($p = 0.04$) and the SGRQ impact score ($p = 0.04$). Data are presented as mean (SD) unless otherwise stated.

Definition of abbreviations: mMRC = modified medical research council, 6MWD = 6 minute walk distance, LAMA = long-acting muscarinic antagonist, SAMA = short-acting muscarinic antagonist, LABA = long-acting beta-agonist, ICS = inhaled corticosteroid, ED = emergency department, ICU = intensive care unit, LOS = length of stay, SGRQ = St. Georges Respiratory Questionnaire

T-tests (or Wilcoxon tests) were used for continuous variables and chi-square tests (or Fisher's exact tests) were used for categorical variables.

Supplementary Table 5. Baseline Characteristics for Urban Completers*

Characteristics	Usual Care N = 115	Proactive iCare N = 191
Age, yr	68.8 (9.0)	68.4 (8.5)
Gender, % female	31.3	41.9
Race & Ethnicity		
Caucasian, %	94.8	91.1
Non-Caucasian, %	5.2	8.9
BMI, units	26.1 (5.5)	26.5 (6.2)
FEV ₁ , % predicted	36.0 (13.7)	36.4 (12.5)
mMRC dyspnea score, units	1.9 (0.9)	2.0 (0.9)
Six minute walk distance, m	277.9 (130.6)	275.9 (106.1)
BODE index, units	4.7 (2.0)	4.8 (1.9)
Current smoker, %	18.3	14.7
Smoking history, pack-yr	56.8 (33.3)	59.8 (32.3)
Current or prior pulmonary rehabilitation, %	37.4	41.4
Lives alone, %	26.1	27.2
Education, yr	13.6 (2.4)	13.8 (2.3)
Influenza vaccination, %	94.8	94.2
Pneumococcal vaccination, %	87.0	82.2
Long-term O ₂ therapy, %	76.5	85.9
Resting O ₂ , L	1.8 (1.8)	1.8 (1.5)
Post-exercise O ₂ , L	2.6 (2.1)	2.9 (2.0)
Sleep O ₂ , L	2.1 (1.5)	2.2 (1.4)
Resting SpO ₂ , %	92.6 (2.5)	93.0 (2.7)
Post-exercise SpO ₂ , %	87.8 (4.4)	87.8 (5.1)
Medications		
SABA, %	91.3	95.8
LABA, %	50.4	59.7
SAMA, %	53.9	37.7
LAMA, %	36.5	51.8
ICS, %	64.3	79.6
Theophylline, %	10.4	8.4
Co-morbidities		
Hypertension, %	54.8	56.0
Congestive heart failure, %	18.3	10.5
Diabetes, %	14.8	16.2
Obstructive sleep apnea, %	12.2	16.8
Prior year healthcare utilization (COPD)		
ED visits, visits/patient	0.50 (1.28)	0.764(1.09)
Hospitalizations, visits/patient	0.34 (0.82)	0.45 (0.94)
ICU hospitalizations, visits/patient	0.09 (0.45)	0.14 (0.45)
ICU hospitalizations with ventilation, visits/patient	0.08 (0.42)	0.08 (0.30)
Hospital LOS, days	1.63 (4.60)	2.04 (4.69)
Urgent office visits, visits/patient	0.70 (1.15)	1.14 (2.06)
Prior year healthcare utilization (non-COPD)		

ED visits, visits/patient	0.23 (0.56)	0.19 (0.46)
Hospitalizations, visits/patient	0.13 (0.36)	0.13 (0.40)
Hospital LOS, days	0.38 (1.32)	0.69 (2.89)
Urgent office visits, visits/patient	0.28 (0.72)	0.29 (0.66)
SGRQ Scores		
Total	45.2 (18.3)	49.3 (15.0)
Symptom	53.4 (22.6)	56.5 (20.2)
Activity	65.4 (21.7)	69.8 (17.9)
Impact	31.2 (19.1)	35.3 (16.1)

*The only significant differences in baseline characteristics between the two trial groups were the proportion of patients using long-term oxygen therapy ($p = 0.04$), short-acting muscarinic antagonists ($p = 0.006$), long-acting muscarinic antagonists ($p = 0.009$) or inhaled corticosteroids ($p = 0.003$), and measures of prior year COPD-related emergency department visits ($p = 0.03$), urgent office visits ($p = 0.049$) and the total SGRQ score ($p = 0.047$). Data are presented as mean (SD) unless otherwise stated.

Definition of abbreviations: mMRC = modified medical research council, 6MWD = 6 minute walk distance, LAMA = long-acting muscarinic antagonist, SAMA = short-acting muscarinic antagonist, LABA = long-acting beta-agonist, ICS = inhaled corticosteroid, ED = emergency department, ICU = intensive care unit, LOS = length of stay, SGRQ = St. Georges Respiratory Questionnaire

T-tests (or Wilcoxon tests) were used for continuous variables and chi-square tests (or Fisher's exact tests) were used for categorical variables.

Supplementary Table 6. Urban Quality of Life Measured by the St. George's Respiratory Questionnaire

Variable	Usual Care Group			Proactive iCare Group			Between Group Difference		p-value	
	N	Baseline Score	Time-point Score	N	Baseline Score	Time-point Score	Change from Baseline	Difference		
Total Score										
3-mth	120	45.9 (17.9)	48.3 (17.1)	2.34 (0.05, 4.63)	224	48.9 (15.1)	42.9 (15.1)	-5.96 (-7.35, -4.56)	-8.29 (-10.97, -5.62)	<0.0001
6-mth	110	45.5 (17.9)	47.6 (18.9)	2.14 (-0.49, 4.78)	196	49.4 (14.9)	41.4 (15.0)	-8.05 (-9.63, -6.48)	-10.20 (-13.26, -7.14)	<0.0001
9-mth	115	45.2 (18.3)	47.4 (18.4)	2.12 (-0.30, 4.55)	191	49.3 (15.0)	41.6 (14.8)	-7.69 (-9.26, -6.12)	-9.82 (-12.70, -6.94)	<0.0001
Symptom										
3-mth	120	53.6 (22.3)	54.3 (21.7)	0.68 (-2.60, 3.95)	224	56.4 (20.4)	47.5 (20.5)	-8.91 (-11.38, -6.43)	-9.58 (-13.71, -5.45)	<0.0001
6-mth	110	53.7 (22.8)	51.8 (22.3)	-1.83 (-5.71, 2.05)	196	56.0 (20.6)	45.3 (20.1)	-10.66 (-13.40, -7.93)	-8.83 (-13.48, -4.19)	<0.001
9-mth	115	53.4 (22.6)	53.1 (21.8)	-0.36 (-4.19, 3.48)	191	56.5 (20.2)	46.9 (18.4)	-9.57 (-12.47, -6.68)	-9.22 (-13.97, -4.47)	<0.001
Activity										
3-mth	120	66.3 (20.6)	68.7 (19.2)	2.41 (-0.48, 5.30)	224	69.1 (18.0)	64.6 (18.3)	-4.56 (-6.36, -2.76)	-6.97 (-10.20, -3.74)	<0.0001
6-mth	110	65.4 (20.6)	65.8 (21.5)	0.40 (-2.76, 3.56)	196	70.1 (17.8)	62.8 (18.5)	-7.33 (-9.32, -5.34)	-7.73 (-11.45, -4.01)	<0.0001
9-mth	115	65.4 (21.7)	65.9 (20.1)	0.49 (-2.35, 3.32)	191	69.8 (17.9)	62.2 (20.0)	-7.53 (-9.51, -5.56)	-8.02 (-11.37, -4.67)	<0.0001
Impact										
3-mth	120	31.9 (19.2)	34.8 (18.3)	2.84 (0.29, 5.38)	224	35.1 (16.4)	29.2 (15.9)	-5.83 (-7.34, -4.32)	-8.67 (-11.62, -5.72)	<0.0001
6-mth	110	31.6 (19.2)	36.0 (19.7)	4.37 (1.43, 7.32)	196	35.5 (16.1)	28.0 (15.8)	-7.50 (-9.31, -5.68)	-11.87 (-15.31, -8.43)	<0.0001
9-mth	115	31.2 (19.1)	35.0 (20.4)	3.81 (0.89, 6.74)	191	35.3 (16.1)	28.1 (15.3)	-7.27 (-9.03, -5.51)	-11.08 (-14.49, -7.68)	<0.0001

Baseline and time-point scores are presented as mean (SD), and changes and differences are presented as mean (95% CI). P-values shown for the comparison between Proactive iCare and Usual Care groups. T-tests were used.

Supplementary Table 7. Urban Smoking, Symptoms, Exercise Capacity and Guideline-based Care

Measurement/ Treatment	Usual Care			Proactive iCare			Inter-group Difference	
	Baseline	9 Months	Change from Baseline	Baseline	9 Months	Change from Baseline	Difference	p- value
FEV ₁ , % predicted	36.0 (13.7)	35.9 (14.3)	-0.38 (-2.12, 1.37)	36.4 (12.5)	32.9 (13.0)	-3.52 (-4.88, -2.16)	-3.14 (-5.37, -0.92)	0.006
mMRC dyspnea scale	1.9 (0.9)	2.1 (1.0)	0.22 (0.05, 0.39)	2.0 (0.9)	1.9 (0.9)	-0.03 (-0.15, 0.10)	-0.24 (-0.45, -0.04)	0.02
6MWD, m	277.9 (130.6)	284.5 (126.8)	4.00 (-16.26, 24.18)	275.9 (106.1)	328.1 (132.4)	50.27 (35.40, 65.14)	46.31 (21.41, 71.22)	0.0003
BODE index	4.7 (2.0)	4.8 (2.1)	0.19 (-0.06, 0.45)	4.8 (1.9)	4.5 (2.0)	-0.26 (-0.48, -0.04)	-0.45 (-0.79, -0.11)	0.009
Sputum, %	44.3	51.3		46.6	40.8			0.03
Post-exercise SpO ₂ , %	87.8 (4.4)	87.9 (4.0)	-0.02 (-0.79, 0.75)	87.8 (5.1)	89.6 (3.3)	1.53 (0.78, 2.30)	1.56 (0.49, 2.63)	0.005

Baseline and 9-month data are presented as mean (SD), and changes and differences are presented as mean (95% CI) unless otherwise stated.

Definition of abbreviations: mMRC = modified medical research council, 6MWD = 6 minute walk distance, LAMA = long-acting muscarinic antagonist, SAMA = short-acting muscarinic antagonist, LABA = long-acting beta-agonist, ICS = inhaled corticosteroid.

P-values shown for the comparison between Proactive iCare and Usual Care groups. T-tests were used for continuous variables, and logistic regression and chi-square tests were used for dichotomous variables.

Supplementary Table 8. Urban Healthcare Utilization Pre-post Difference in 9-month Rate, per Patient

Variable	Usual Care N=115	Proactive iCare N=191	Difference	p-value
COPD Healthcare				
Hospitalizations, visits/patient	-0.08 (-0.24, -0.08)	-0.16 (-0.31, -0.02)	-0.08 (-0.30, 0.14)	0.51
ICU hospitalizations, visits/patient	-0.01 (-0.10, 0.09)	-0.11 (-0.18, -0.05)	-0.11 (-0.22, 0.00)	0.053
ICU hospitalizations with ventilation, visits/patient	-0.02 (-0.10, 0.06)	-0.08 (-0.12, -0.03)	-0.06 (-0.15, 0.04)	0.17
Hospital LOS, days	-0.38* (-1.51, 0.75)	-1.02 (-1.64, -0.40)	-0.64 (-1.92, 0.64)	0.27
ED visits, visits/patient	-0.18 (-0.38, 0.02)	-0.30 (-0.47, -0.14)	-0.12 (-0.39, 0.01)	0.12
Urgent office visits, visits/patient	0.15 (-0.10, 0.40)	-0.62 (-0.99, -0.32)	-0.77 (-1.16, -0.39)	<0.0001
Non-COPD Healthcare				
Hospitalizations, visits/patient	0.03 (-0.08, 0.15)	0.05 (-0.03, 0.13)	0.02 (-0.12, 0.15)	0.75
Hospital LOS, days	0.49 (-0.29, 1.26)	-0.04 (-0.54, 0.47)	-0.52 (-1.44, 0.40)	0.81
ED visits, visits/patient	-0.02 (-0.13, 0.10)	0.16 (0.02, 0.29)	0.17 (-0.00, 0.35)	0.29
Urgent office visits, visits/patient	0.15 (-0.01, 0.31)	0.15 (-0.01, 0.30)	-0.01 (-0.23, 0.21)	0.74

Data are presented as mean (95% CI).

Definition of abbreviations: ED = emergency department, ICU = intensive care unit, LOS = length of stay.

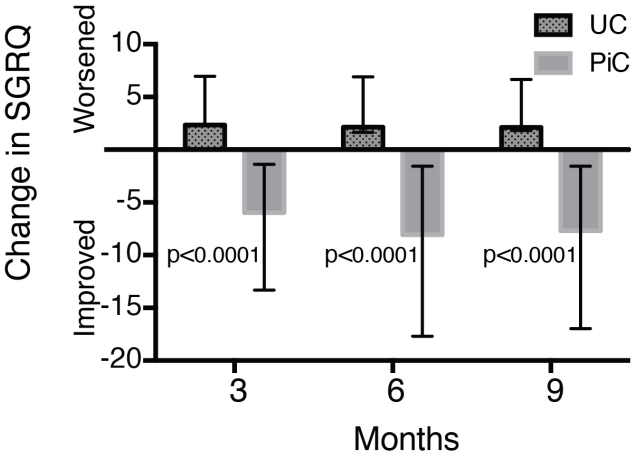
*Excluding one patient with pre-post difference = 195 days

P-values shown for the comparison between Proactive iCare and Usual Care groups. Wilcoxon tests were used for continuous variables.

Supplementary Figure 1

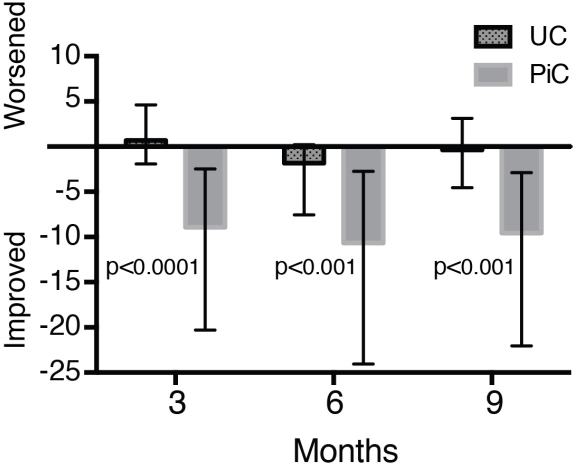
A

Total SGRQ



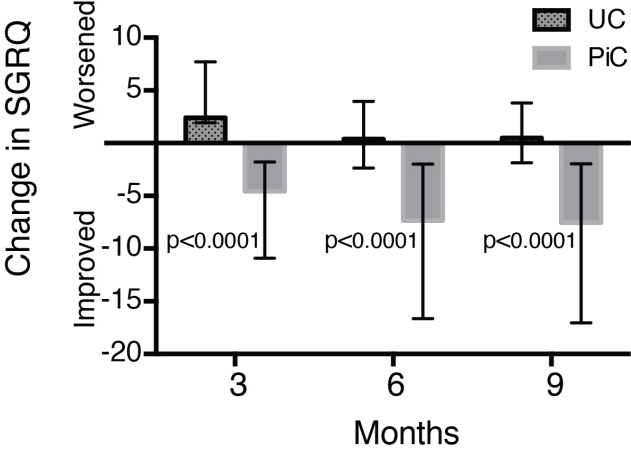
B

Symptom SGRQ



C

Activity SGRQ



D

Impact SGRQ

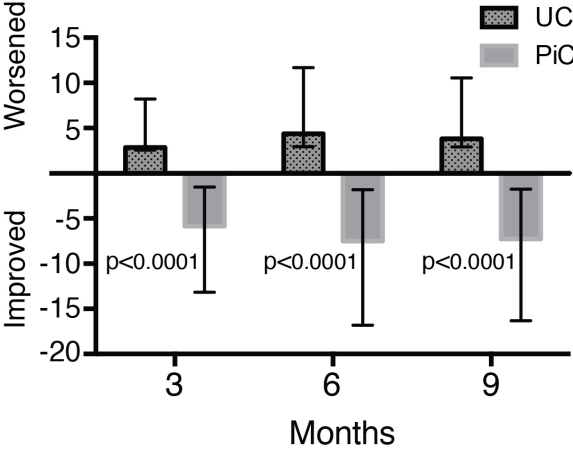


FIGURE LEGENDS

Supplementary Figure 1. Urban Cohort Quality of Life. This figure shows how quality of life changed from baseline at 3, 6 and 9 months in the Usual Care (UC) and Proactive Integrated Care (PiC) groups of the urban cohort. Quality of life measured by the A) total, B) symptom, C) activity and D) impact domains of the St. George's Respiratory Questionnaire (SGRQ) are shown \pm 95% CI. T-tests were used to compare differences in the change from baseline for the UC and PiC groups at each time-point.