

Supplemental Table 1. Subgroup analysis of patients with and without hypertension or coronary heart disease

	Hypertension		<i>P</i> value	Coronary heart disease		<i>P</i> value
	Without (n=294, 88.6%)	With (n=38, 11.4%)		Without (n=321, 96.7%)	With (n=11, 3.3%)	
Sex						
Male, n (%)	112(38.1)	20(52.6)	0.085	127 (39.6)	5 (45.5)	0.759
Female, n (%)	182(61.9)	18(47.4)	0.085	194 (60.4)	6 (54.5)	0.759
Age, median (IQR)	50 (39-59)	56 (49-60)	0.009	51(40-59)	56(45-64)	0.174
Symptoms						
Fever, n (%)	156(64.2)	21(56.8)	0.382	169 (62.8)	8 (72.7)	0.751
Cough, n (%)	93(38.3)	15(39.5)	0.887	104(32.4)	4(36.4)	0.885
Fatigue, n (%)	29(11.9)	10(27.0)	0.014	34(12.6)	5(45.5)	0.002
Chest Tightness , n (%)	18(7.4)	14(38.9)	<0.001	26(9.7)	6(54.5)	<0.001
Diarrhea, n (%)	9(3.7)	2(5.4)	0.644	10(3.1)	1(9.1)	0.362
Headache, n (%)	5(2.1)	2(5.4)	0.233	7(2.6)	0(0.0)	1.000
Sore throat, n (%)	4(1.7)	0(0.0)	1.000	4(1.5)	0(0.0)	1.000
Rhinorrhea, n (%)	4(1.7)	0(0.0)	1.000	4(1.5)	0(0.0)	1.000
Myalgia, n (%)	9(3.7)	3(8.1)	0.233	11(4.1)	1(9.1)	0.388
Toothache, n (%)	2 (0.7)	0 (0.0)	1.000	1(0.3)	1(9.1)	0.065
Comorbidity						
Diabetes, n (%)	7(2.4)	4(10.5)	0.027	11(34.3)	0(0.0)	0.532
Lung disease , n	5(1.7)	2(5.3)	0.185	5(1.6)	2(18.2)	0.019

(%)

Radiologic abnormality, n (%)	185 (66.3)	16 (57.1)	0.331	199(66.6)	2(25.0)	0.022
Positive SARS-CoV-2 testing by RT-PCR						
Twice or more, n (%)	64(22.5)	8(28.6)	0.463	69 (22.6)	3 (37.5)	0.391
Once, n (%)	221(77.5)	20(71.4)	0.463	236 (77.4)	5 (62.5)	0.391
Laboratory findings						
Red-blood cell count*10 ¹² /L, median (IQR)	4.37 (4.02-4.69)	4.51 (4.16-4.90)	0.094	4.39 (4.05-4.74)	4.28 (4.00-4.54)	0.506
White-cell count *10 ⁹ /L, median (IQR)	5.25 (4.48-6.37)	5.55 (4.74-6.35)	0.875	5.25 (4.49-6.37)	5.19 (4.60-5.93)	0.816
Neutrophil count *10 ⁹ /L, median (IQR)	3.21 (2.58-4.12)	3.23 (2.55-3.80)	0.828	3.24 (2.58-4.08)	2.85 (2.25-3.69)	0.392
Lymphocyte count*10 ⁹ /L, median (IQR)	1.58 (1.26-1.91)	1.73 (1.26-1.92)	0.397	1.61 (1.26-1.91)	1.58(1.20-2.39)	0.683
NLR, median (IQR)	2.07 (1.57-2.69)	2.04 (1.65-2.37)	0.729	2.07 (1.61-2.67)	1.66(1.11-3.06)	0.340
Platelet count*10 ⁹ /L, median (IQR)	261 (216-313)	255 (204-289)	0.325	259 (216-312)	221(193-270)	0.254
Hemoglobin, g/L, median (IQR)	135 (125-144)	139 (131-146)	0.154	135 (125-145)	135(125-143)	0.869
C-reactive protein,						

<10.00 mg/L	236(85.2)	25(83.3)	0.788	255(85.3)	6(75.0)	0.421
≥10.00 mg/L	41(14.8)	5(16.7)	0.788	44(14.7)	2(25.0)	0.421
Median length of symptoms onset to admission, days (IQR)	12 (7-17)	13 (7-17)	0.942	12(8-16)	17(7-26)	0.131
Median length of hospital stay, days (IQR)	14 (10-19)	15 (7-20)	0.730	14(10-19)	15(2-18)	0.487
Clinical outcomes at data cutoff						
Discharge, n (%)	253 (86.1)	21 (55.3)	0.001	273(85.0)	1(9.1)	0.001
Require intensive care, n (%)	41 (13.9)	17 (44.7)	0.001	48(15.0)	10(90.9)	0.001

Abbreviation: IQR, interquartile range; NLR, neutrophil to lymphocyte ratio.

Supplemental Table 2. Univariable analyses of the risk factors between stable group and intensive group

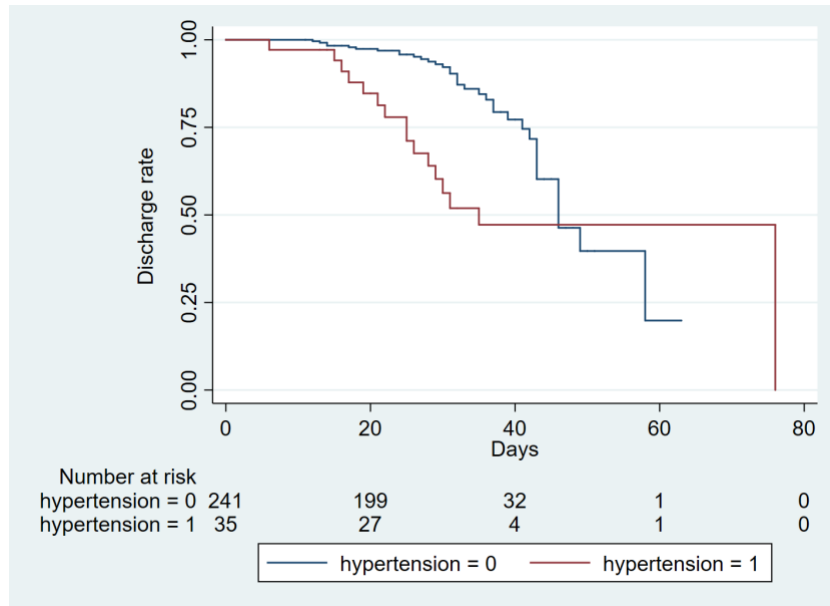
Characteristic	Stable group (n=274, 82.5%)	Intensive group (n=58, 17.5%)	β	<i>OR</i>	<i>CI</i>	<i>P</i> Value
Sex						
Male, n (%)	105 (38.3)	27 (46.6)	0.337	1.402	0.792-2.480	0.246
Age, median (IQR)	50.5 (40-59)	52 (42-60)	0.006	1.006	0.983-1.030	0.604
Symptoms						
Fever, n (%)	142 (63.4)	35 (62.5)	-0.038	0.962	0.525-1.763	0.901
Cough, n (%)	88 (39.1)	20 (35.7)	-0.145	0.865	0.471-1.590	0.640
Fatigue, n (%)	28 (12.5)	11 (19.6)	0.537	1.711	0.793-3.692	0.171
Chest Tightness, n (%)	15 (6.7)	17 (29.3)	1.799	6.044	2.788-13.107	<0.001
Diarrhea, n (%)	8 (3.6)	3 (5.4)	0.424	1.528	0.392-5.957	0.541
Headache, n (%)	6(2.7)	1(1.8)	-0.415	0.661	0.078-5.601	0.704
Sore throat, n (%)	2(0.9)	2(3.4)	1.409	4.093	0.564-29.713	0.164
Rhinorrhea, n (%)	4(1.8)	0(0.0)	0	1		
Myalgia, n (%)	9(4.0)	3(5.4)	0.302	1.352	0.354-5.168	0.659
Comorbidity						
CVD, n (%)	25(7.5)	23(39.7)	1.879	6.545	3.357-12.762	<0.001
Coronary heart disease, n (%)	1(0.4)	10(17.2)	4.040	56.875	7.117-454.518	<0.001
Hypertension, n (%)	21 (7.7)	16 (27.9)	1.609	4.995	2.433-10.258	<0.001
Diabetes, n (%)	7 (2.6)	4 (6.9)	1.039	2.825	0.799-9.987	0.107
Lung disease, n (%)	4 (1.5)	3 (5.2)	1.303	3.682	0.801-16.915	0.094
Radiologic abnormality, n (%)	183 (70.1)	18 (36.7)	-1.436	0.238	0.125-0.451	<0.001
Positive SARS-CoV-2 testing by RT-PCR						
Twice or more, n (%)	48 (18.3)	24 (48.0)	1.419	4.135	2.187-7.817	<0.001

Once, n (%)	215 (81.7)	26 (74)	1.419	4.135	2.187-7.817	<0.001
Laboratory findings						
Red-blood cell count*10 ¹² /L, median (IQR)	4.39(4.05-4.73)	4.42(4.02-4.76)	-0.959	0.909	0.532-1.552	0.726
White-cell count *10 ⁹ /L, median (IQR)	5.19(4.47-6.33)	5.62(4.88-6.58)	0.192	1.212	1.010-1.453	0.058
Neutrophil count *10 ⁹ /L, median (IQR)	3.18(2.55-3.98)	3.49(2.67-4.27)	0.191	1.211	0.957-1.532	0.111
Lymphocyte count, *10 ⁹ /L, median (IQR)	1.58(1.26-1.86)	1.80(1.26-2.17)	0.634	1.886	1.073-3.314	0.027#
NLR, median (IQR)	2.1 (1.6-2.7)	2.1 (1.5-2.8)	-0.027	0.973	0.716-1.324	0.863
Platelet count*10 ⁹ /L, median (IQR)	267(218-324)	223(194-269)	-0.009	0.991	0.987-0.996	0.001
Hemoglobin, g/L, median (IQR)	135(126-144)	135(122-145)	-0.006	0.994	0.977-1.011	0.497
C-reactive protein ≥10.00 mg/L	40 (15.6)	6 (12.0)	-0.301	0.740	0.296-1.851	0.520
Median length of symptoms onset to admission, days (IQR)	12 (8-15)	13 (6-21)	0.025	1.025	0.991-1.061	0.157
Median length of hospital stay, days (IQR)	14 (10-19)	15 (11-21.5)	0.023	1.024	0.979-1.070	0.303

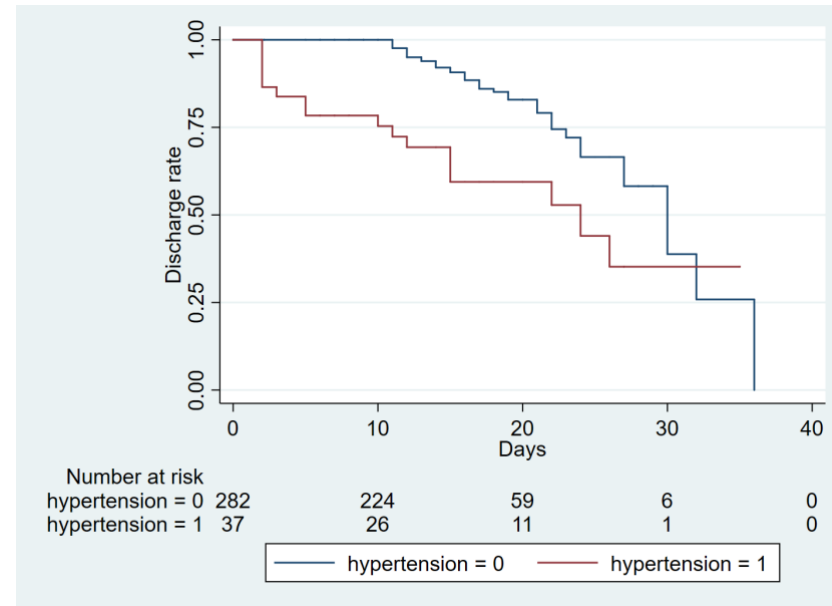
Abbreviation: IQR, interquartile range; NLR, neutrophil to lymphocyte ratio.

Supplemental Figure 1 Discharge rate during hospitalization between patients with vs without hypertension

A. Time from onset



B. Time from admission

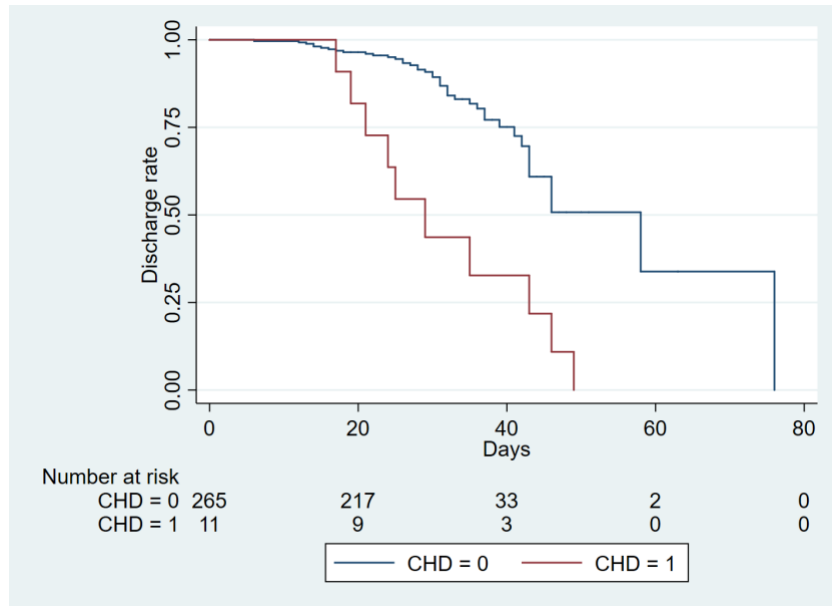


C. Comparisons of outcomes

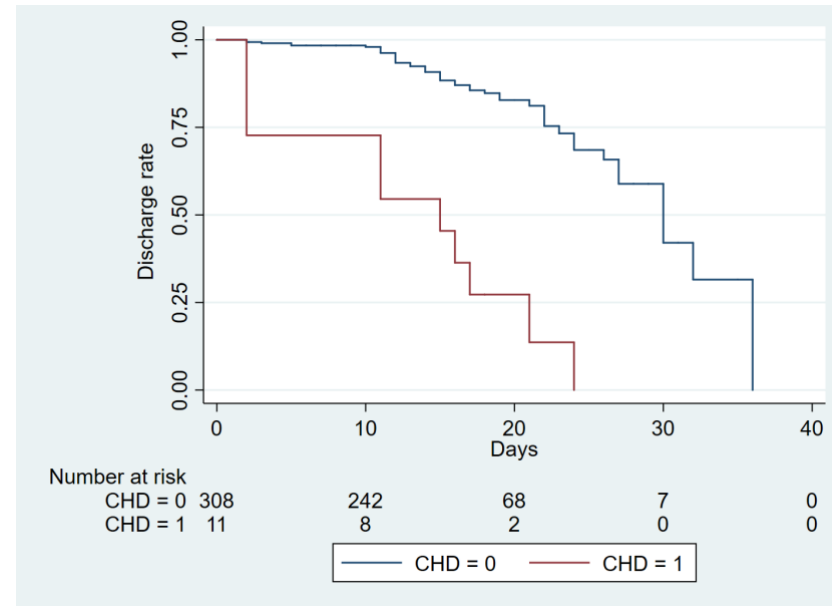
Groups	No. of events/ No. of patients	time from onset	P value log-rank	Groups	No. of events/ No. of patients	time from admission	P value log-rank
		Duration, Mean (range), d				Duration, Mean (range), d	
Without hypertension	36/241	33(12-58)	P<0.001	Without hypertension	39/282	18(11-36)	P<0.001
With hypertension	16/35	26(6-76)		With hypertension	17/37	10(2-26)	

Supplemental Figure 2 Discharge rate during hospitalization between patients with vs without coronary heart disease (CHD)

A. Time from onset



B. Time from admission



C. Comparisons of outcomes

Groups	No. of events/ No. of patients	time from onset	P value log-rank	Groups	No. of events/ No. of patients	time from admission	P value log-rank
		Duration, Mean (range), d				Duration, Mean (range), d	
Without CHD	42/265	13(6-76)	P<0.001	Without CHD	46/308	17(2-36)	P<0.001
With CHD	10/11	31(17-49)		With CHD	10/11	12(2-24)	