

Supplementary

Supplementary Table 1. ICD-10- and ATC-codes used to define drug and comorbidity.

	Coding system	Codes
<i>Current drug use¹</i>		
Antihypertensive drugs	ATC	C03A C07 C08 C09
ACE/ARBs	ATC	C09
Calcium channel blockers	ATC	C08
Beta-blockers	ATC	C07
Thiazides	ATC	C03A
Loop-diuretics	ATC	C03C
Glucose-lowering drugs	ATC	A10A A10B
Non-insulin glucose lowering drugs	ATC	A10B
Insulin	ATC	A10A
Insulin monotherapy	ATC	A10A, not A10B
Antiplatelets	ATC	B01AC
Anticoagulant therapy	ATC	B01AA, B01AE07, B01AF
Opioids	ATC	N02A
Benzodiazepines and derivates	ATC	N05BA N05CD-F
Antipsychotics	ATC	N05AA N05AB N05AC N05AD N05AE N05AF N05AG N05AH N05AX N05AL01 N05AL05
Antidepressants	ATC	N06A
Systemic glucocorticoids	ATC	H02AB
Inhaled corticosteroids	ATC	R03AK R03AL R03BA
Lipid modifying agents	ATC	C10
NSAIDs	ATC	M01A (excluding M01AX)
Methotrexate	ATC	L04AX03
Biologics	SKS ATC	BOHJ16A BOHJ18A1-5 BOHJ18B1-8 BOHJ18C1 BOHJ19H4 BOHJ19H6 BOHJ26 BWHB84 L04AA21 L04AA23-6 L04AA28 L04AA33 L04AA34 L04AA36 L04AB01 L04AB02 L04AB04 L04AB05 L04AC02 L04AC03 L04AC05 L04AC07 L04AC08 L04AC10-4 L04AC16 L04AC17 D11AH05 L01XC02
<i>Medical history²</i>		
Chronic lung disease	ICD-10 ATC	J41-J47 R03AK, R03AL, R03BA, R03AC12, R03AC13, R03AC18, R03AC19, R03CC12, R03BB04, R03BB05, R03BB06, R03BB07
Hypertension	ICD-10	I10 I11 I12 I13 I15

	ATC	C08, C03A, C07, C09
Ischemic heart disease	ICD-10 ATC	I20 I21 I22 I23 I24 I25 N02BA C01DA B01AC24
Heart failure	ICD-10	I099A I110 I130 I132 I50
Atrial fibrillation	ICD-10	I48
Stroke	ICD-10	I60 I61 I62 I63 I64 I69
Diabetes	ICD-10 ATC	E10 E11 E13 E14 A10
Dementia	ICD-10 ATC	F00 F01 F02 F03 F1073 F1173 F1273 F1373 F1473 F1573 F1673 F1873 F1973 N06D
Any cancer	ICD-10	C00-C97, excluding C44
Chronic liver disease	ICD-10	K700-K704 K709 K71-K74 K760 K766 B150 B160 B162 B18 B190 I85
Hospital-diagnosed kidney disease	ICD-10	I12 I13 N00-N05 N07 N08 N11 N14 N18 N19 E102 E112 E142
Alcohol abuse	ICD-10 ATC	F10 E244 G312 G621 G721 I426 K292 K70 K852 K860 Q860 Z502 Z714 Z721 N07BB
Substance abuse	ICD-10 ATC	F11-F19 N07BC
Organ transplantation	ICD-10	Z94
Overweight and obesity	ICD-10 ATC	E66 A08
Severe mental illness (schizophrenia, schizoaffective disorder, or bipolar disorder)	ICD-10 ATC	F20 F25 F30 F31 N05AN

¹Current drug use is defined as at least one filled prescription within 6 months prior to the test date. Of note, there is a lag of 15 days on prescription data.

²Medical history is based on an ever-recording of hospital discharge diagnoses, with or without combination with drug redemption data.

ACE: angiotensin-converting enzyme inhibitor; ARB: angiotensin receptor blocker; NSAID: non-steroidal anti-inflammatory drugs.

Supplementary Table 2. Baseline characteristics for SARS-CoV-2 PCR positive cases with a fatal course within 30 days, stratified by whether cases were managed in the community or hospitalized prior to their death.

Characteristic	SARS-CoV-2 PCR positive cases with fatal course				
	All N=524 (100%)	Community- managed** N=115 (22%)	Hospitalized N=409 (78%)	Non-ICU admission N=330 (63%)	ICU admission N=79 (15%)
Age years, median (IQR)	82 (75-89)	87 (79-92)	81 (74-87)	82 (75-88)	73 (68-77)
0-29	0 (-)***	0 (-)***	0 (-)***	0 (-)***	0 (-)***
30-59	15 (2.9%)***	(n<5)***	_***	_***	6 (7.6%)***
60-69	51 (9.7%)	6 (5.2%)	45 (11%)	27 (8.2%)	18 (23%)
70-79	149 (28%)	22 (19%)	127 (31%)	86 (26%)	41 (52%)
80-89	197 (38%)	42 (37%)	155 (38%)	141 (43%)	14 (18%)
90+	112 (21%)	44 (38%)	68 (17%)	68 (21%)	0 (-)
Sex					
Female	225 (43%)	67 (58%)	158 (39%)	146 (44%)	12 (15%)
Male	299 (57%)	48 (42%)	251 (61%)	184 (56%)	67 (85%)
Authorized health care workers	(n<5)	0 (-)	(n<5)	0 (-)	(n<5)
Nurse	0 (-)	0 (-)	0 (-)	0 (-)	0 (-)
Physician	(n<5)	0 (-)	(n<5)	0 (-)	(n<5)
Other	(n<5)	0 (-)	(n<5)	0 (-)	(n<5)
Number of comorbidities¹					
Median [IQR]	3 (2-4)	3 (2-4)	3 (2-4)	3 (2-5)	3 (1-4)
0	24 (4.6%)	8 (7.0%)	16 (3.9%)	11 (3.3%)	5 (6.3%)
1	75 (14%)	20 (17%)	55 (13%)	39 (12%)	16 (20%)
2	103 (20%)	27 (23%)	76 (19%)	58 (18%)	18 (23%)
3	114 (22%)	22 (19%)	92 (22%)	73 (22%)	19 (24%)
4+	208 (40%)	38 (33%)	170 (42%)	149 (45%)	21 (27%)
Hospital contacts within the last year²					
Median [IQR]	1 (0-2)	0 (0-1)	1 (0-2)	1 (0-2)	0 (0-1)
0	252 (48%)	61 (53%)	191 (47%)	143 (43%)	48 (61%)
1	136 (26%)	32 (28%)	104 (25%)	88 (27%)	16 (20%)

2	59 (11%)	11 (9.6%)	48 (12%)	40 (12%)	8 (10%)
3	37 (7.1%)	7 (6.1%)	30 (7.3%)	-	(n<5)
4+	40 (7.6%)	(n<5)	-	-	5 (6.3%)
Current drug use³					
Antihypertensive drugs	317 (60%)	53 (46%)	264 (65%)	216 (65%)	48 (61%)
ACE/ARBs	187 (36%)	26 (23%)	161 (39%)	128 (39%)	33 (42%)
Calcium channel blockers	94 (18%)	10 (8.7%)	84 (21%)	70 (21%)	14 (18%)
Beta-blockers	166 (32%)	26 (23%)	140 (34%)	116 (35%)	24 (30%)
Thiazides	49 (9.4%)	12 (10%)	37 (9.0%)	29 (8.8%)	8 (10%)
Loop-diuretics	174 (33%)	35 (30%)	139 (34%)	121 (37%)	18 (23%)
Glucose-lowering drugs	101 (19%)	13 (11%)	88 (22%)	69 (21%)	19 (24%)
Non-insulin glucose lowering drugs	82 (16%)	8 (7.0%)	74 (18%)	57 (17%)	17 (22%)
Insulin	55 (10%)	8 (7.0%)	47 (11%)	40 (12%)	7 (8.9%)
Insulin monotherapy	19 (3.6%)	5 (4.3%)	14 (3.4%)	-	(n<5)
Antiplatelets	180 (34%)	31 (27%)	149 (36%)	120 (36%)	29 (37%)
Anticoagulant therapy	147 (28%)	31 (27%)	116 (28%)	101 (31%)	15 (19%)
Opioids	187 (36%)	51 (44%)	136 (33%)	120 (36%)	16 (20%)
Benzodiazepines and derivates	103 (20%)	27 (23%)	76 (19%)	68 (21%)	8 (10%)
Antipsychotics	63 (12%)	22 (19%)	41 (10%)	-	(n<5)
Antidepressants	155 (30%)	49 (43%)	106 (26%)	93 (28%)	13 (16%)
Systemic glucocorticoids	71 (14%)	15 (13%)	56 (14%)	50 (15%)	6 (7.6%)
Inhaled corticosteroids	83 (16%)	13 (11%)	70 (17%)	60 (18%)	10 (13%)
Leukotriene receptor antagonist	(n<5)	(n<5)	(n<5)	(n<5)	(n<5)
Lipid modifying agents	174 (33%)	25 (22%)	149 (36%)	115 (35%)	34 (43%)
NSAID	50 (9.5%)	(n<5)	-	-	16 (20%)
Methotrexate	5 (1.0%)	0 (-)	5 (1.2%)	(n<5)	(n<5)
Biologics	(n<5)	0 (-)	(n<5)	(n<5)	0 (-)
Medical history⁴					
Chronic lung diseases*	143 (27%)	22 (19%)	121 (30%)	99 (30%)	22 (28%)
Hypertension*	378 (72%)	75 (65%)	303 (74%)	253 (77%)	50 (63%)
Ischemic heart disease*	157 (30%)	33 (29%)	124 (30%)	101 (31%)	23 (29%)
Heart failure	98 (19%)	18 (16%)	80 (20%)	73 (22%)	7 (8.9%)

Atrial fibrillation	157 (30%)	38 (33%)	119 (29%)	107 (32%)	12 (15%)
Stroke	126 (24%)	31 (27%)	95 (23%)	87 (26%)	8 (10%)
Diabetes*	134 (26%)	21 (18%)	113 (28%)	90 (27%)	23 (29%)
Dementia*	112 (21%)	41 (36%)	71 (17%)	71 (22%)	0 (-)
Any cancer	128 (24%)	22 (19%)	106 (26%)	87 (26%)	19 (24%)
Chronic liver disease	14 (2.7%)	0 (-)	14 (3.4%)	-	(n<5)
Hospital-diagnosed kidney disease	74 (14%)	9 (7.8%)	65 (16%)	56 (17%)	9 (11%)
Alcohol abuse*	33 (6.3%)	(n<5)	-	-	6 (7.6%)
Substance abuse*	19 (3.6%)	(n<5)	-	-	(n<5)
Major psychiatric disorder	12 (2.3%)	(n<5)	-	-	(n<5)
Organ transplantation	6 (1.1%)	0 (-)	6 (1.5%)	(n<5)	(n<5)
Overweight and obesity*	53 (10%)	7 (6.1%)	46 (11%)	36 (11%)	10 (13%)
Rheumatoid arthritis/connective tissue disease	48 (9.2%)	9 (7.8%)	39 (9.5%)	32 (9.7%)	7 (8.9%)

¹Number of comorbidities is the total number of coexisting conditions listed under 'Medical history'.

²Hospital admissions of more than 12 hours, from 365 days to 14 days prior to the index date.

³Current drug use is defined as at least one filled prescription within 6 months prior to the test date. Of note, there is a lag of 15 days on prescription data.

⁴Medical history is based on an ever-recording of hospital discharge diagnoses. Comorbidities marked by * are defined by hospital discharge diagnoses in combination with drug use for the comorbidity (i.e. filled prescription within 6 months prior to the test date). For details on definitions, see **Supplementary Table 1**.

** These patients died without having a recorded hospital admission (defined as hospitalizations lasting 12 hours or more) within 14 days of the index date. Of note, 15 of these patients were recorded as being admitted to hospital at time of death (mainly due to death occurring very shortly after admission).

***Age categories (0-29, 30-59) collapsed to ensure anonymity.

IQR: interquartile range; SARS-CoV-2: Severe acute respiratory syndrome coronavirus 2. ICU: intensive care unit; ACE: angiotensin-converting enzyme inhibitor; ARB: angiotensin receptor blocker; NSAID: non-steroidal anti-inflammatory drugs.

Supplementary Table 3. Predictors of hospitalization and having a fatal course within 30 days among SARS-CoV-2 PCR positive cases, when adjusting single comorbidities for age-, sex-, and additionally for total number of comorbidities.

Characteristic	Hospitalization	Death within 30 days²
	Age-, sex., and number of comorbidities adjusted OR (95%CI)	Age-, sex., and number of comorbidities adjusted OR (95%CI)
Medical history¹		
Chronic lung diseases*	1.2 (1.0-1.4)	1.1 (0.9-1.4)
Hypertension*	1.0 (0.9-1.2)	0.7 (0.5-0.9)
Ischemic heart disease*	0.9 (0.7-1.1)	0.7 (0.6-1.0)
Heart failure	1.4 (1.1-1.9)	1.1 (0.8-1.5)
Loop-diuretics	1.8 (1.4-2.3)	1.5 (1.2-2.0)
Atrial fibrillation	0.9 (0.7-1.1)	1.1 (0.9-1.4)
Stroke	0.9 (0.7-1.1)	1.0 (0.8-1.3)
Diabetes*	1.2 (1.0-1.4)	1.1 (0.9-1.5)
Non-insulin glucose lowering drugs	1.2 (0.9-1.4)	1.0 (0.7-1.3)
Insulin	1.3 (1.0-1.8)	1.4 (1.0-2.0)
Insulin monotherapy	1.4 (0.9-2.2)	1.1 (0.6-2.0)
Dementia*	0.4 (0.3-0.5)	1.6 (1.2-2.1)
Any Cancer	1.0 (0.8-1.2)	1.0 (0.8-1.3)
Chronic liver disease	1.5 (1.1-2.2)	1.1 (0.6-2.1)
Hospital-diagnosed kidney disease	1.7 (1.3-2.3)	1.4 (1.0-2.0)
Alcohol abuse*	1.1 (0.8-1.5)	1.2 (0.8-1.9)
Substance abuse*	0.8 (0.6-1.2)	1.2 (0.7-2.2)
Major psychiatric disorder*	1.4 (0.8-2.5)	1.9 (0.9-3.9)
Benzodiazepines and derivates	1.5 (1.2-1.8)	1.8 (1.4-2.4)
Antipsychotics	1.1 (0.8-1.5)	3.2 (2.2-4.7)
Antidepressants	1.1 (0.9-1.3)	1.5 (1.2-1.9)
Organ transplantation	1.4 (0.7-2.8)	1.8 (0.7-4.8)
Overweight and obesity*	1.3 (1.0-1.6)	1.0 (0.7-1.4)
Rheumatoid arthritis/connective tissue disease	1.0 (0.8-1.3)	0.8 (0.6-1.2)

¹Medical history is based on an ever-recording of hospital discharge diagnoses. Comorbidities marked by * are defined by hospital discharge diagnoses in combination with drug redemptions (i.e. filled prescription within 6 months prior to the test date. Of note, there is a lag of 15 days on prescription data). For details on definitions, see **Supplementary Table 1**.

²Death was defined as all-cause mortality within 30 days from the index date.

OR: odds ratio; SARS-CoV-2: Severe acute respiratory syndrome coronavirus 2.

Supplementary Table 4. Clinical characteristics of SARS-CoV-2 PCR positive cases during subperiods of the epidemic, i.e. containment phase, mitigation phase, and during reopening of the society.

	Containment phase ¹ 27 th Feb to 11 th Mar	Mitigation phase ² 12 th Mar to 14 th Apr	During re-opening ³ 15 th Apr onwards
All individuals tested (N)	2559	71631	144,968
PCR positive cases (N)	N=756	N=6,059	N=2,704
Age, median [IQR]	43 (32-50)	52 (38-66)	45 (29-61)
≤18 years	30 (4.0%)	183 (3.0%)	215 (8.0%)
19-59 years	671 (89%)	3,759 (62%)	1,734 (64%)
60-74 years	49 (6.5%)	1,155 (19%)	383 (14%)
≥75 years	6 (0.8%)	962 (16%)	372 (14%)
Sex			
Female	243 (32%)	3,598 (59%)	1,668 (62%)
Male	513 (68%)	2,461 (41%)	1,036 (38%)
Health care workers (N)	50 (6.6%)	1,482 (24%)	637 (24%)
Number of comorbidities	0 (0-1)	1 (0-2)	0 (0-1)
0	552 (73%)	2,929 (48%)	1,458 (54%)
1	160 (21%)	1,403 (23%)	598 (22%)
2	35 (4.6%)	705 (12%)	279 (10%)
3	9 (1.2%)*	469 (7.7%)	155 (5.7%)
4+		553 (9.1%)	214 (7.9%)

¹Test strategy during the containment phase: mainly testing of suspected symptomatic COVID-19 cases with a relevant travel history (mainly from China and Italy)

²Test strategy during the mitigation phase: Initially testing of individuals with suspected COVID-19 requiring hospital admission, and testing of symptomatic frontline health care workers in critical functions (e.g. ICU personnel). From late-March onwards, upscaled to include testing of individuals with mild to moderate respiratory symptoms suspicious of COVID-19, as well as broader screening of healthcare professionals

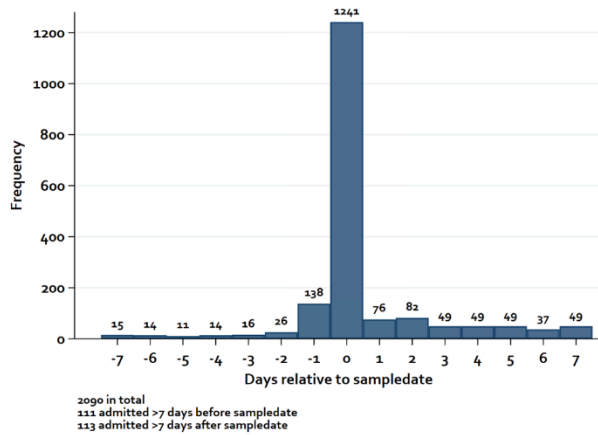
³Test strategy during re-opening: Gradually upscaled to include testing of any individuals with mild to severe symptoms suspicious of COVID-19.

*Number of comorbidities (3 and 4+) collapsed to ensure anonymity.

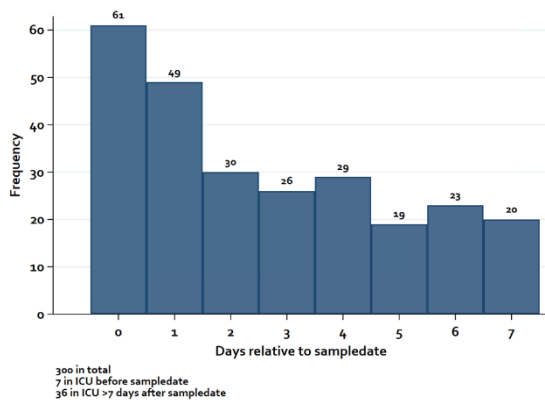
SARS-CoV-2: Severe acute respiratory syndrome coronavirus 2.

Supplementary Figure 1. Hospitalization (A), ICU admission (B) and death in timely relation to the date of having a positive test for SARS-CoV-2 (C).

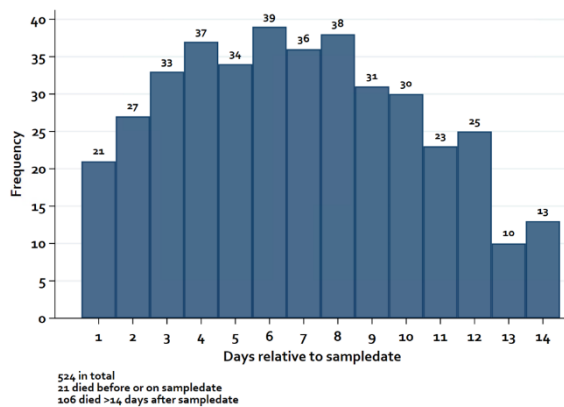
A) SARS-CoV-2 PCR positive cases who were hospitalized: date of hospital admission relative to sample date



B) SARS-CoV-2 PCR positive cases who were admitted to ICU: date of ICU admission relative to sample date



C) SARS-CoV-2 PCR positive cases who died: date of death relative to sample date



STROBE Statement—checklist of items that should be included in reports of observational studies

	Item No	Recommendation	Page No
Title and abstract	1	(a) Indicate the study's design with a commonly used term in the title or the abstract	1
		(b) Provide in the abstract an informative and balanced summary of what was done and what was found	2
Introduction			
Background/rationale	2	Explain the scientific background and rationale for the investigation being reported	3
Objectives	3	State specific objectives, including any prespecified hypotheses	3
Methods			
Study design	4	Present key elements of study design early in the paper	3
Setting	5	Describe the setting, locations, and relevant dates, including periods of recruitment, exposure, follow-up, and data collection	3-5
Participants	6	(a) <i>Cohort study</i> —Give the eligibility criteria, and the sources and methods of selection of participants. Describe methods of follow-up <i>Case-control study</i> —Give the eligibility criteria, and the sources and methods of case ascertainment and control selection. Give the rationale for the choice of cases and controls <i>Cross-sectional study</i> —Give the eligibility criteria, and the sources and methods of selection of participants	4 Descriptive study
		(b) <i>Cohort study</i> —For matched studies, give matching criteria and number of exposed and unexposed <i>Case-control study</i> —For matched studies, give matching criteria and the number of controls per case	NA
Variables	7	Clearly define all outcomes, exposures, predictors, potential confounders, and effect modifiers. Give diagnostic criteria, if applicable	4-5
Data sources/measurement	8*	For each variable of interest, give sources of data and details of methods of assessment (measurement). Describe comparability of assessment methods if there is more than one group	4-5
Bias	9	Describe any efforts to address potential sources of bias	5
Study size	10	Explain how the study size was arrived at	3-5
Quantitative variables	11	Explain how quantitative variables were handled in the analyses. If applicable, describe which groupings were chosen and why	
Statistical methods	12	(a) Describe all statistical methods, including those used to control for confounding	5
		(b) Describe any methods used to examine subgroups and interactions	NA
		(c) Explain how missing data were addressed	NA
		(d) <i>Cohort study</i> —If applicable, explain how loss to follow-up was addressed <i>Case-control study</i> —If applicable, explain how matching of cases and controls was addressed	NA

Cross-sectional study—If applicable, describe analytical methods taking account of sampling strategy

(e) Describe any sensitivity analyses

4-5

Continued on next page

Results			
Participants	13*	(a) Report numbers of individuals at each stage of study—eg numbers potentially eligible, examined for eligibility, confirmed eligible, included in the study, completing follow-up, and analysed	4
		(b) Give reasons for non-participation at each stage	
		(c) Consider use of a flow diagram	
Descriptive data	14*	(a) Give characteristics of study participants (eg demographic, clinical, social) and information on exposures and potential confounders	5-7
		(b) Indicate number of participants with missing data for each variable of interest	
		(c) <i>Cohort study</i> —Summarise follow-up time (eg, average and total amount)	
Outcome data	15*	<i>Cohort study</i> —Report numbers of outcome events or summary measures over time	
		<i>Case-control study</i> —Report numbers in each exposure category, or summary measures of exposure	
		<i>Cross-sectional study</i> —Report numbers of outcome events or summary measures	
Main results	16	(a) Give unadjusted estimates and, if applicable, confounder-adjusted estimates and their precision (eg, 95% confidence interval). Make clear which confounders were adjusted for and why they were included	5-7
		(b) Report category boundaries when continuous variables were categorized	
		(c) If relevant, consider translating estimates of relative risk into absolute risk for a meaningful time period	
Other analyses	17	Report other analyses done—eg analyses of subgroups and interactions, and sensitivity analyses	
Discussion			
Key results	18	Summarise key results with reference to study objectives	8
Limitations	19	Discuss limitations of the study, taking into account sources of potential bias or imprecision. Discuss both direction and magnitude of any potential bias	9-10
Interpretation	20	Give a cautious overall interpretation of results considering objectives, limitations, multiplicity of analyses, results from similar studies, and other relevant evidence	10
Generalisability	21	Discuss the generalisability (external validity) of the study results	9-10
Other information			
Funding	22	Give the source of funding and the role of the funders for the present study and, if applicable, for the original study on which the present article is based	14

*Give information separately for cases and controls in case-control studies and, if applicable, for exposed and unexposed groups in cohort and cross-sectional studies.