

Data supplement

The role of asymptomatic SARS-CoV-2 infections: rapid living systematic review and meta-analysis

Diana C Buitrago-Garcia (0000-0001-9761-206X),^{1,2} Dianne Egli-Gany (0000-0002-4725-0475),¹ Michel J Counotte (0000-0003-1039-6873),¹ Stefanie Hossmann (0000-0003-1600-5925),¹ Hira Imeri (0000-0002-0412-1649),¹ Aziz Mert Ipekci (0000-0002-0260-9691),¹ Georgia Salanti (0000-0002-3830-8508),¹ Nicola Low (0000-0003-4817-8986).¹

1. Institute of Social and Preventive Medicine, University of Bern, Bern, Switzerland
2. Graduate School of Health Sciences, University of Bern, Bern, Switzerland

Contents

Text S1. Search strings	3
Figure S1. Flow chart	5
Figure S2a. Review question 1, forest plot of included studies, by study precision	6
Figure S2b: Review question 1, sub-group analysis comparing studies of hospitalised patients with all other settings.....	7
Figure S3a: Review question 2, forest plot of included studies, by study precision	8
Figure S3b: Review question 2, sub-group analysis, according to risk of selection bias	9
Table S1. Review question 2, characteristics of methods and risk of selection bias in studies examining proportion of pre-symptomatic SARS-CoV-2 infection, ordered as in Figure S3b	10
Figure S4. Risk of bias in studies included in review question 1 and review question 2	13
Figure S5. Assessment of credibility of mathematical modelling studies.....	14
References	15

Text S1. Search strings

From: Living Evidence on COVID-19 (<https://ispmbern.github.io/covid-19/living-review/collectingdata.html>, accessed 09.05.2020)

We retrieve data from [EMBASE](#) via OVID, [MEDLINE](#) via PubMed, BioRxiv and MedRxiv.

Search terms

When searches are updated, references that are identified that were not in the database before, are inserted by date (**date_entrez**) they were indexed in remote database, the date they are inserted in OUR database is formatted as the '**strategydate**' (raw data is available [here](#)).

01.05.2020

EMBASE:

```
(SARS coronavirus/ or middle east respiratory syndrome/ or severe acute respiratory syndrome/ or (coronavirus* or corona virus* or HCoV* or ncov* or covid or covid19 or sars-cov* or sarscov* or Sars-coronavirus* or Severe Acute Respiratory Syndrome Coronavirus*).mp.) and 20191201:20301231.(dc).
```

29.04.2020

MEDLINE:

```
("coronavirus"[MH] OR "coronavirus infections"[MH] OR "coronavirus"[TW] OR "corona virus"[TW] OR "HCoV"[TW] OR "nCov"[TW] OR "covid"[TW] OR "covid19"[TW] OR "Severe Acute Respiratory Syndrome Coronavirus 2"[TW] OR "SARS-CoV2"[TW] OR "SARS-CoV 2"[TW] OR "SARS Coronavirus 2"[TW] OR "MERS-CoV"[TW]) AND (2019/1/1:3000[PDAT])
```

01.04.2020

From 01.04.2020, we retrieve the currate BioRxiv/MedRxiv dataset [Link](#)

26.03.2020

MEDLINE:

```
("Wuhan coronavirus" [Supplementary Concept] OR "COVID-19" OR SARS-CoV-2 OR "2019 ncov"[tiab] OR (("novel coronavirus"[tiab] OR "new coronavirus"[tiab]) AND (wuhan[tiab] OR 2019[tiab])) OR 2019-nCoV[All Fields] OR (wuhan[tiab] AND coronavirus[tiab]))
```

EMBASE:

```
(nCov or 2019-nCoV or ((new or novel or wuhan) adj3 coronavirus) or covid19 or covid-19 or SARS-CoV-2).mp.
```

BioRxiv/MedRxiv:

ncov or corona or wuhan or COVID or SARS-CoV-2

With the kind support of the [Public Health & Primary Care Library PHC](#), and following guidance of the [Medical Library Association](#)

01.01.2020

MEDLINE:

```
("Wuhan coronavirus" [Supplementary Concept] OR "COVID-19" OR "2019
ncov"[tiab] OR (("novel coronavirus"[tiab] OR "new coronavirus"[tiab]) AND
(wuhan[tiab] OR 2019[tiab])) OR 2019-nCoV[All Fields] OR (wuhan[tiab] AND
coronavirus[tiab]))))
```

EMBASE:

ncov OR (wuhan AND corona) OR COVID

BioRxiv/MedRxiv:

ncov or corona or wuhan or COVID

We retained publications that used the keywords listed below in the title or abstract.

"asyp*" OR "pre-syp*" OR "presyp*" OR "preclinical" OR "pre-clinical" OR "without symptoms"
OR "no symptoms" OR "free of symptoms" OR "non-syp*" OR "nonsyp*" OR "symptom-free" OR
"symptomfree"

Figure S1. Flow chart

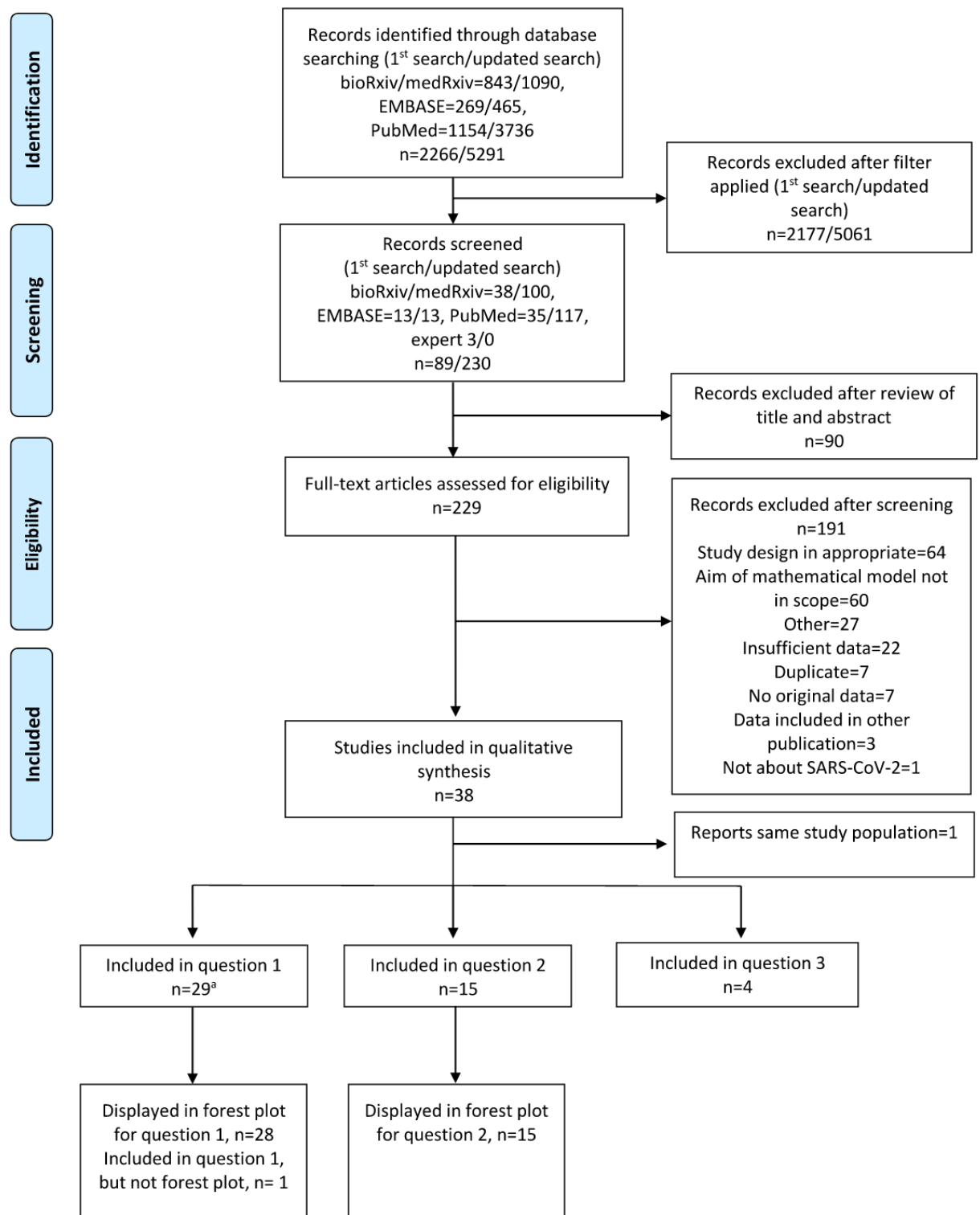


Figure 1. Flow chart of identified, excluded and included records as of 20 April 2020

^a Study by Mizumoto K, et al not included in forest plot

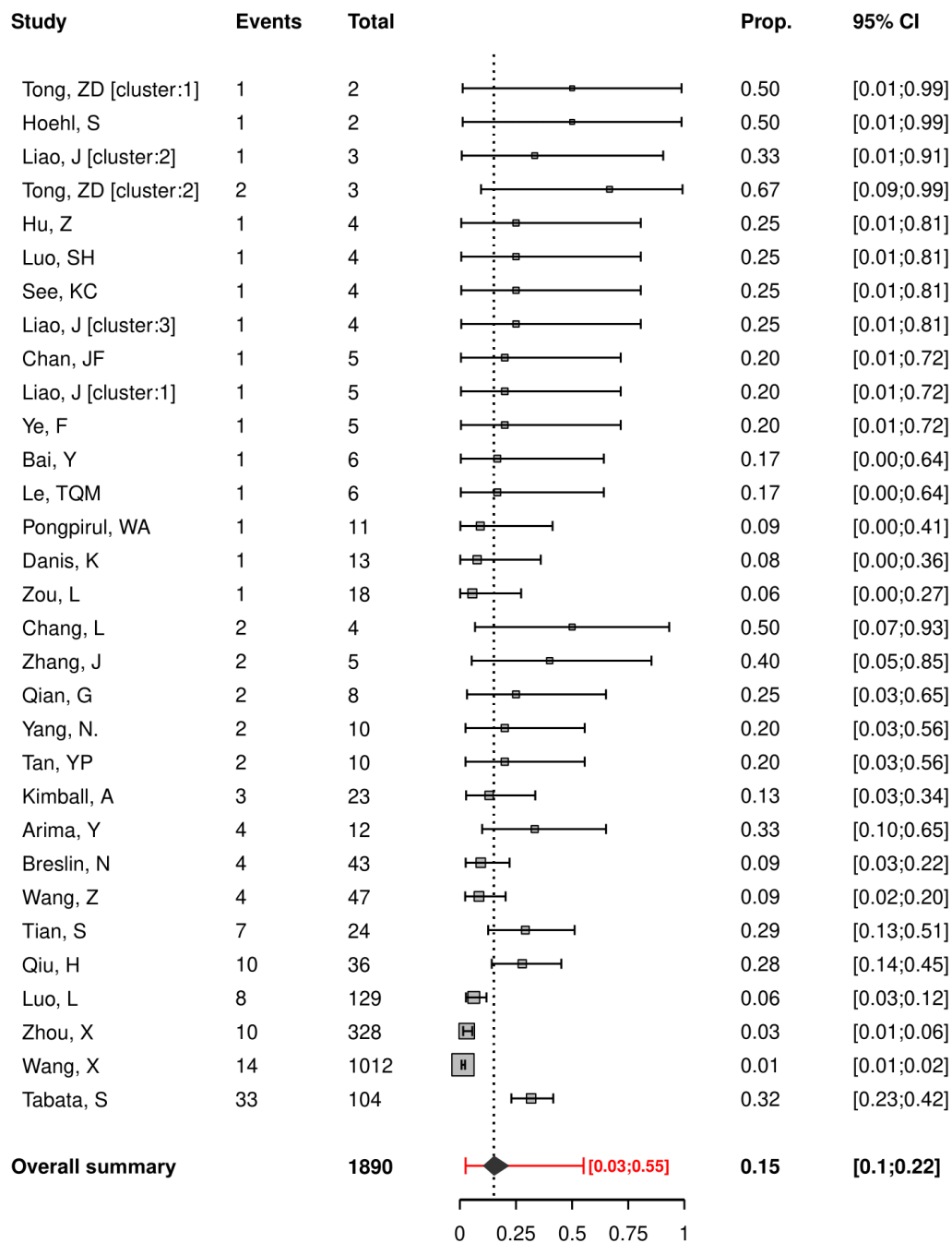


Figure S2a. Review question 1, forest plot of included studies, by study precision

The size of the shaded square is proportional to study size; solid diamond is the summary proportion and 95% confidence interval, estimated from random effects meta-analysis; red line is the prediction interval; reference list of studies on p15.

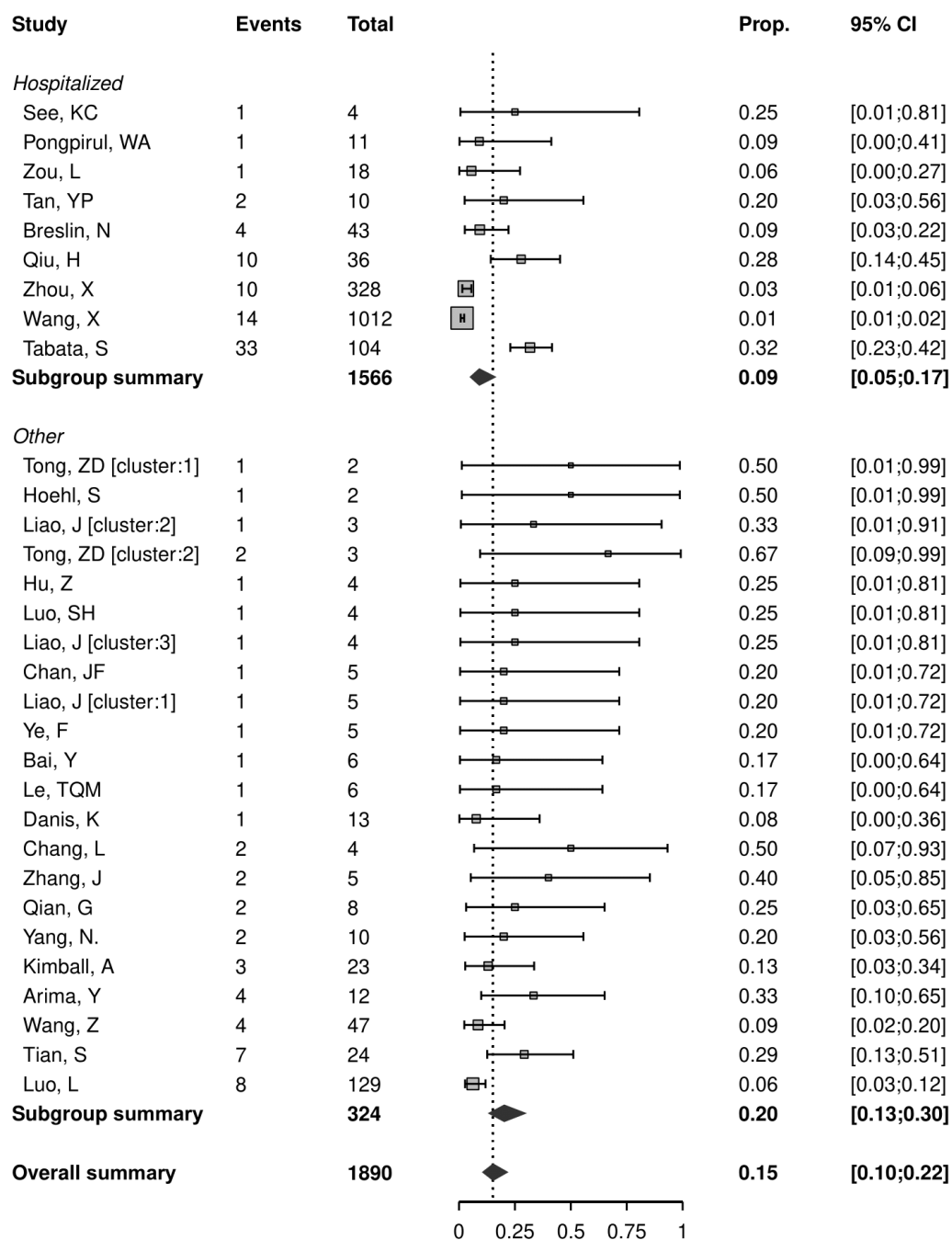


Figure S2b: Review question 1, sub-group analysis comparing studies of hospitalised patients with all other settings

The size of the shaded square is proportional to study size; solid diamond is the summary proportion and 95% confidence interval, estimated from random effects meta-analysis; red line is the prediction interval; reference list of studies on p15.

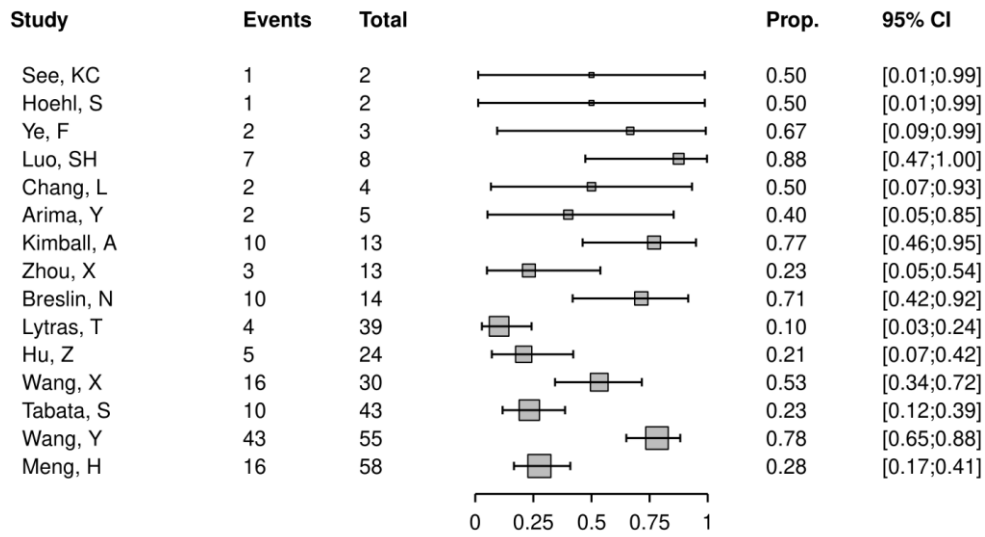


Figure S3a: Review question 2, forest plot of included studies, by study precision
The size of the shaded square is proportional to study size; reference list of studies on p15.

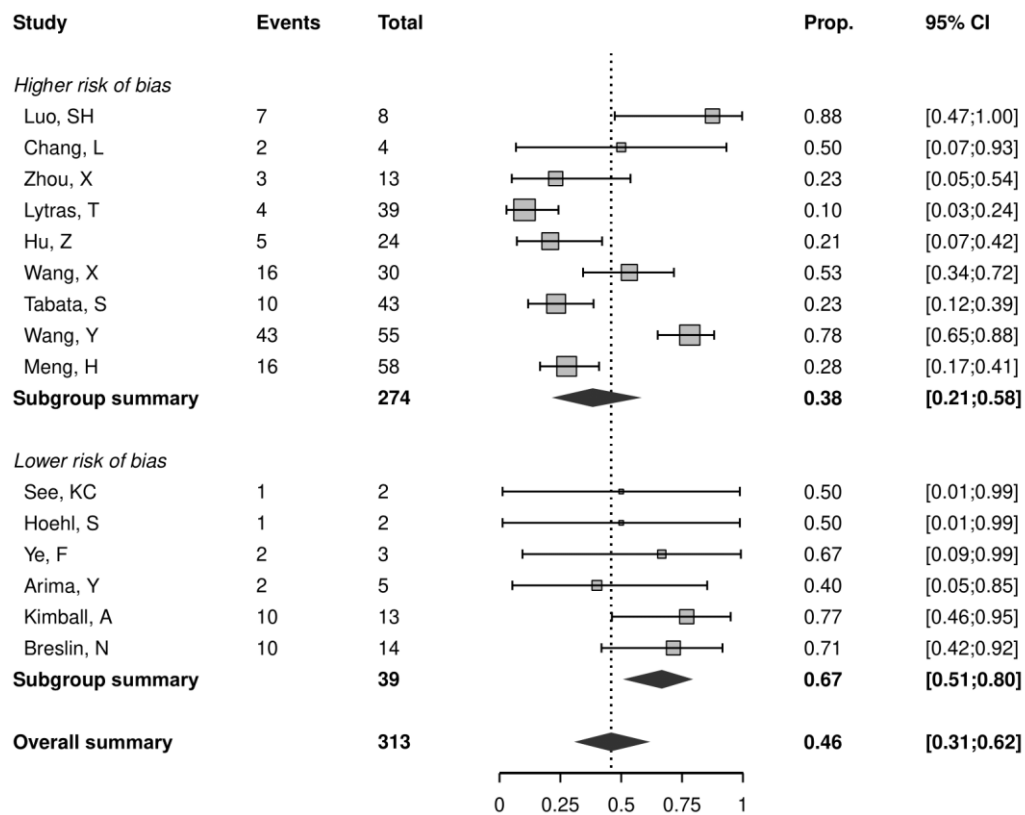


Figure S3b: Review question 2, sub-group analysis, according to risk of selection bias

The size of the shaded square is proportional to study size; solid diamond is the summary proportion and 95% confidence interval, estimated from random effects meta-analysis; red line is the prediction interval; reference list of studies on p15.

Table S1. Review question 2, characteristics of methods and risk of selection bias in studies examining proportion of pre-symptomatic SARS-CoV-2 infection, ordered as in Figure S3b

Author ^a	Study setting	Interpretation	Direction of potential selection bias on estimate of proportion pre-symptomatic
Luo SH ⁴⁴	Hospital-based study. Not reported whether data collection was retrospective or prospective. "By February 21, 2020, among the 83 cases of confirmed 2019-nCoV infection in Anqing, we found 8 cases asymptomatic at confirmation. Among them, 7 cases developed symptoms afterward, during hospitalization."	No details of how asymptomatic cases were detected. Detailed information provided for the one case who remained asymptomatic.	Unclear. Insufficient information
Chang L ²⁰	Blood donation centre, "Wuhan Blood Centre began screening for severe acute respiratory syndrome coronavirus 2 on January 25, 2020." "By March 4, we had screened 2,430 donations in real-time..." One positive donation on January 28 (negative on Dec 12, 26 2019, and Jan 13). Retrospective testing of 4,995 donations Dec 21 2019 to Jan 22 2020) - one positive donation from Jan 19.	Study was early in Wuhan epidemic. Two positive donations in 7,425 (0.03%). Blood donors might be healthier than general population and unlikely to give blood if unwell. If they give blood, likely to be asymptomatic. So neither source population, or study population is an adequate sample of the target population.	Underestimate
Zhou X ⁴³	Hospital-based study. Not reported whether data collection was retrospective or prospective. As of March 4, 2020, 328 COVID-19 cases in Shanghai. Of these, 13 asymptomatic at diagnosis and reported no symptoms in 2 weeks before admission. Tested as close contacts of confirmed symptomatic cases. Mean age 51.8 years (range 25-80).	Contacts of diagnosed COVID-19 cases. Total number of index cases and number of symptomatic contacts not reported. Data reported in a letter with very few details. If none reported symptoms in the two weeks before admission, people with pre-symptomatic infection would have been excluded.	Underestimate
Lytras ⁴⁵	Greek nationals evacuated from France, Spain, UK on flights. Young adults (mean 27 years). Only one reported symptoms on arrival. RT-PCR on arrival.	Might have been required to be asymptomatic before being cleared for flying. Young, healthy adults might be more likely to have asymptomatic infection than older people.	Underestimate
Hu Z ²²	Hospital-based study, retrospective record review. "All screening-identified asymptomatic COVID-19 cases in Nanjing were admitted to the Second Hospital of Nanjing,	Appears to be consecutive series of all asymptomatic SARS-CoV-2 positive found through contact investigations. No time since last exposure reported. Retrospective review of	Unclear. Insufficient information

	the only hospital to admit for COVID-19 patients of the city, from Jan 28 to Feb 9, 2020." "Nucleic acid test was performed on the same day when the contacts were tracked." Median age 33 years (interquartile range 5-95).	medical records, so development of symptoms might not have been documented.	
Wang X ³⁹	Hospital-based study, retrospective review of electronic medical records. Patients in a Fancang hospital in Wuhan February, 7-12, 2020, a temporary hospital for non-critically ill people with COVID-19. Selection criteria for admission are age 16+ and able to self-care.	Very low proportion of asymptomatic patients during period of rapid increase in case numbers in Wuhan. Not clear if people with asymptomatic diagnosed SARS-CoV-2 would be in hospital or at home.	Unclear. Insufficient information
Tabata S ³³	Hospital-based study, retrospective review of medical records. Passengers from Diamond Princess cruise ship. Around 700 had SARS-CoV-2 positive test result by March 1, 2020. Of these, 107 were taken to a military hospital in Japan from February 11-25. Not a random sample of those diagnosed. Median age 68 years (interquartile range 47-75). More likely to be "relatively healthy individuals... several clinical signs and symptoms, which have occurred and disappeared before the patients were referred to our hospital, may be included or excluded"	Selected population, with preferential inclusion of those remaining well. People who had been asymptomatic at start of illness but had already developed symptoms would not be included.	Underestimate
Wang Y ³⁷	Hospital-based study, retrospective review of medical records. "We included in the study asymptomatic patients who had laboratory-confirmed positive results for SARS-CoV-2 (based on nucleic acid testing of pharyngeal swab samples) after the diagnosis of COVID-19 in a family member and who were admitted to the Third People's Hospital of Shenzhen from 11 January 2020 to 29 February 2020."	No time since last exposure reported. Retrospective review of medical records so development of symptoms might not have been documented. Authors were contacted to clarify inconsistent number of patients asymptomatic at the end of follow-up in publication.	Unclear. Insufficient information
Meng H ⁴⁵	Hospital-based study. Not reported whether data collection was retrospective of prospective. Patients admitted to hospital" All patients had a clear exposure to COVID19. All 58 patients were asymptomatic at admission." Study designed to examine value of computerised tomography (CT) scans for COVID-19 in patients with negative RT-PCR results.	No information about dates of exposure. Study objectives aimed towards patients with uncertain diagnosis. Patients who developed symptoms soon after admission might not have been enrolled. Few patients with subjective symptoms but all had CT abnormalities.	Underestimate

See K ^{C32}	Hospital-based study. Not reported whether data collection was retrospective or prospective. First four paediatric cases of COVID-19 in Malaysia, up to end of February 2020. Aged 20 months, 4, 9 and 11 years.	Very small number of cases, insufficient to draw conclusions.	Low risk of selection bias, but low precision
Hoehl S ⁴⁷	Mostly German nationals who had stayed in Hubei province, evacuated to Frankfurt, Germany on February 1, 2020. "Screening for symptoms and clinical signs of infection was performed before their departure."	Allowed to board flights even if symptomatic. One passenger had a faint rash.	Low risk of selection bias, but low precision
Ye F ⁴¹	Contact investigation involving screening of 44 close contacts of a symptomatic index case. Five cases in Luzhou. All admitted and observed in hospital. Three of four infected contacts initially asymptomatic. Ages 23-51 years.	Asymptomatic cases found through screening of a large number of contacts of a symptomatic index case. Careful documentation of exposure and clinical follow-up.	Low risk of selection bias, but low precision
Arima Y ¹⁶	Japanese residents in Wuhan, evacuated on January 29-31 2020, early in Wuhan epidemic). "A total of 566 Japanese nationals..." (not clear if any were left behind). All tested. Population relatively young; 406/566 (72%) <50 years.	Study was early in Wuhan epidemic. 4/12 asymptomatic after 14 days. Younger population, not representative of Japanese population, or of population with SARS-CoV-2. But complete population of those asked to participate.	Low risk of selection bias, but low precision
Kimball A ²³	Outbreak investigations in a nursing home, Washington, USA. One health care provider worked while symptomatic, February 26, 28 2020. By March 6, 7 residents SARS-CoV-2 positive. March 13, 76/92 residents tested, 23/76 SARS-CoV-2 positive, mean age 80.7 years (SD 8.4). 13/23 initially asymptomatic, 10 had developed symptoms.	High participation. Careful documentation of proportion initially asymptomatic that developed symptoms. Testing was 17 days after symptoms in index case. Time from exposure to symptom onset for each secondary case not reported so not clear if outbreak was propagated. Symptom reporting was difficult because of cognitive impairment in many of the elderly.	Low risk of selection bias
Breslin N ¹⁸	Hospital-based study, retrospective review of medical records. Two hospitals with labour wards, New York, USA. Pregnant women included from retrospective notes review for 15 days from first RT-PCR +ve patient on March 13, 2020. Prospective universal screening from March 13-21 of all women 20+ week's gestation.	Universal testing of pregnant women is less biased than testing of symptomatic people. Should capture a cross-section of people at all stages of SARS-CoV-2 infection. Pregnant women are a segment of the younger adult population.	Low risk of bias

a. Reference numbers as per the main text. References listed on p15

Author ^a	1 Clear criteria for inclusion	2 SARS-CoV-2 measurement by RT-PCR for all	3 Asymptomatic status at start of follow-up	4 Consecutive inclusion of participants	5 Complete inclusion of participants	6 Reporting of the demographics of participants	7 Reporting of clinical information	8a Symptom status of cases at the end of follow-up	8b Adequate follow-up	9 Reporting of the site/clinic demographics	10 Numerator and denominator available	11a Study population adequate sample of the source population	11b Study population adequate sample of the target population
Arima Y ¹⁶	Yes	Yes	Yes	Yes	Yes	No	No	Yes	Yes	Yes	Yes	No	No
Bai Y ¹⁷	Yes	Yes	Yes	Yes	Yes	No	Yes	Yes	Yes	Yes	Yes	Yes	No
Breslin N ¹⁸	Yes	Yes	Yes	Yes	Yes	Yes	Yes	Yes	Yes	Yes	Yes	Yes	No
Chan JF ¹⁹	Yes	Yes	Yes	Yes	Yes	Yes	Yes	Yes	Yes	Yes	Yes	Yes	No
Chang L ²⁰	Yes	Yes	Yes	Yes	Yes	No	No	Yes	Yes	No	Yes	Yes	No
Danis K ²¹	Yes	Yes	Yes	Yes	Yes	No	Yes	Yes	Yes	Yes	Yes	Yes	No
Hoehl S ⁴⁷	Yes	Yes	Yes	Yes	Yes	No	No	Yes	Yes	Yes	Yes	Yes	No
Hu Z ²²	Yes	Yes	Yes	Yes	Yes	Yes	Yes	Yes	Yes	Yes	Yes	Yes	No
Kimball A ²³	Yes	Yes	Yes	Yes	No	Yes	Yes	Yes	Yes	Yes	Yes	Yes	No
Le TQM ²⁴	Yes	Yes	Yes	Yes	Yes	Yes	No	Yes	Yes	Yes	Yes	Yes	No
Liao J ²⁵	Yes	Yes	Yes	Yes	Yes	Yes	Yes	Yes	Yes	Yes	Yes	Yes	No
Luo L ²⁶	Yes	Yes	Yes	Yes	Yes	Yes	Yes	Yes	Yes	Yes	Yes	Yes	Yes
Luo SH ⁴⁴	Yes	Yes	Yes	Yes	No	No	Yes	Yes	Yes	Yes	Yes	Yes	No
Lytras T ⁴⁵	Yes	Yes	No	Yes	Yes	No	Yes	Yes	Yes	Yes	Yes	Yes	No
Meng H ²⁷	Yes	Yes	Yes	Yes	Unclear	Yes	Yes	Yes	Yes	Yes	Yes	Yes	No
Pongpirul WA ²⁹	Yes	Yes	Yes	Yes	Yes	Yes	Yes	Yes	Yes	Yes	Yes	Yes	No
Qian G ³⁰	Yes	Yes	Yes	Yes	Yes	No	Yes	Yes	Yes	No	Yes	Yes	No
Qiu H ³¹	Yes	Yes	Yes	Yes	Yes	Yes	Yes	Unclear	Unclear	Yes	Yes	Yes	No
See KC ³²	Yes	Yes	Yes	Yes	Yes	Yes	Yes	Yes	Yes	Yes	Yes	Unclear	No
Tabata S ³³	Yes	Yes	Yes	Yes	Yes	Yes	Yes	Yes	No	Yes	Yes	No	No
Tan YP ³⁴	Yes	Yes	Yes	Yes	Yes	Yes	Yes	Yes	Yes	Yes	Yes	Yes	No
Tian S ³⁵	Yes	Yes	Yes	Yes	Yes	Yes	Yes	Yes	Yes	Yes	Yes	Yes	Yes
Tong ZD ³⁶	Yes	Yes	Yes	Yes	Yes	Yes	Yes	Yes	Yes	Yes	Yes	Yes	No
Wang X ³⁹	Yes	Yes	Yes	Yes	Yes	Yes	Yes	Yes	Yes	Yes	Yes	Yes	No
Wang Y ³⁷	Yes	Yes	Yes	Yes	Yes	Yes	No	No	Yes	Yes	Yes	Yes	No
Wang Z ³⁸	No	Yes	Yes	Unclear	No	No	Yes	Unclear	Unclear	Yes	Yes	Unclear	No
Yang N ⁴⁰	Yes	Yes	Yes	Yes	No	Yes	Yes	Yes	Yes	Yes	Yes	No	No
Ye F ⁴¹	Yes	Yes	Yes	Yes	Yes	Yes	Yes	Yes	Yes	Yes	Yes	Yes	No
Zhang J ⁴²	Yes	Yes	Yes	Yes	Yes	No	Yes	Yes	Yes	Yes	Yes	Yes	No
Zhou X ⁴³	Yes	Yes	Yes	Yes	Yes	Yes	Yes	Yes	Yes	Yes	Yes	Yes	No
Zou L ⁴⁸	Yes	Yes	Yes	Yes	Unclear	Yes	Yes	Yes	Yes	Yes	Yes	Unclear	No

a. Reference numbers as per the main text

Figure S4. Risk of bias in studies included in review question 1 and review question 2

Risk of bias assessed using an adaptation of the Joanna Briggs Institute Critical Appraisal Checklist for Case Series (reference 10 in main text) The adapted tool included items about inclusion criteria, measurement of asymptomatic status, follow-up of course of disease, and availability of numerator and denominator. We added items about selection biases affecting the study, source and target populations from a tool for the assessment of risk of bias in prevalence studies (reference 11 in main text)

AUTHOR ^a	1	2	3	4	5	6	7	8	9	10	11	12	13
	Is the population relevant?	Are any critical interventions missing?	Is the context (settings and circumstances) applicable?	Is external validation of the model sufficient to make its results credible for your decision?	Is internal verification of the model sufficient to make its results credible for your decision?	Does the model have sufficient face validity to make its results credible for your decision?	Is the design of the model adequate for your decision problem?	Are the data used in populating the model suitable for your decision problem?	Were the analyses performed using the model adequate to inform your decision problem?	Was there an adequate assessment of the effects of uncertainty?	Was the reporting of the model adequate to inform your decision problem?	Was the interpretation of results fair and balanced?	Were there any potential conflicts of interest?
Ferreti L⁵⁰	PY	NA	YES	NO	YES	YES	YES	PY	YES	YES	YES	NO	NO
Ganyani T⁴⁹	PY	NA	YES	NO	YES	YES	YES	PY	YES	PY	YES	PY	NO
He X⁵²	PY	NA	YES	NO	YES	YES	YES	PY	YES	YES	PY	YES	NO
Zhang W⁵¹	PY	NA	YES	NO	YES	NO	PY	PY	NO	NO	NO	NO	UNCLEAR
a. Reference numbers as per the main text													
PY: Partially yes													
NA: Not applicable													

Figure S5. Assessment of credibility of mathematical modelling studies

Credibility of modelling studies assessed using a tool developed by the International Society for Pharmacoeconomics and Outcomes Research (ISPOR) (reference 12 in main text)

References

- Arima Y, Shimada T, Suzuki M, et al. Severe Acute Respiratory Syndrome Coronavirus 2 Infection among Returnees to Japan from Wuhan, China, 2020. *Emerg Infect Dis* 2020;26(7) doi: 10.3201/eid2607.200994 [published Online First: 2020/04/11]
- Bai Y, Yao L, Wei T, et al. Presumed Asymptomatic Carrier Transmission of COVID-19. *JAMA* 2020;54(0):E017. doi: 10.1001/jama.2020.2565
- Breslin N, Baptiste C, Gyamfi-Bannerman C, et al. COVID-19 infection among asymptomatic and symptomatic pregnant women: Two weeks of confirmed presentations to an affiliated pair of New York City hospitals. *Am J Obstet Gynecol MFM* 2020:100118. doi: 10.1016/j.ajogmf.2020.100118 [published Online First: 2020/04/16]
- Chan JF, Yuan S, Kok KH, et al. A familial cluster of pneumonia associated with the 2019 novel coronavirus indicating person-to-person transmission: a study of a family cluster. *Lancet* 2020;395(10223):514-23. doi: 10.1016/S0140-6736(20)30154-9 [published Online First: 2020/01/28]
- Chang L, Zhao L, Gong H, et al. Severe Acute Respiratory Syndrome Coronavirus 2 RNA Detected in Blood Donations. *Emerg Infect Dis* 2020;26(7) doi: 10.3201/eid2607.200839 [published Online First: 2020/04/04]
- Danis K, Epaulard O, Benet T, et al. Cluster of coronavirus disease 2019 (Covid-19) in the French Alps, 2020. *Clin Infect Dis* 2020 doi: 10.1093/cid/ciaa424 [published Online First: 2020/04/12]
- Hoehl S, Rabenau H, Berger A, et al. Evidence of SARS-CoV-2 Infection in Returning Travelers from Wuhan, China. *N Engl J Med* 2020;382(13):1278-80. doi: 10.1056/NEJMc2001899 [published Online First: 2020/02/19]
- Hu Z, Song C, Xu C, et al. Clinical characteristics of 24 asymptomatic infections with COVID-19 screened among close contacts in Nanjing, China. *Sci China Life Sci* 2020;63(5):706-11. doi: 10.1007/s11427-020-1661-4 [published Online First: 2020/03/09]
- Kimball A, Hatfield KM, Arons M, et al. Asymptomatic and Presymptomatic SARS-CoV-2 Infections in Residents of a Long-Term Care Skilled Nursing Facility - King County, Washington, March 2020. *MMWR Morb Mortal Wkly Rep* 2020;69(13):377-81. doi: 10.15585/mmwr.mm6913e1 [published Online First: 2020/04/03]
- Le TQM, Takemura T, Moi ML, et al. Severe Acute Respiratory Syndrome Coronavirus 2 Shedding by Travelers, Vietnam, 2020. *Emerg Infect Dis* 2020;26(7) doi: 10.3201/eid2607.200591 [published Online First: 2020/04/03]
- Liao J, Fan S, Chen J, et al. Epidemiological and clinical characteristics of COVID-19 in adolescents and young adults. *medRxiv* 2020 doi: 10.1101/2020.03.10.20032136
- Luo L, Liu D, Liao X-l, et al. Modes of contact and risk of transmission in COVID-19 among close contacts. *medRxiv* 2020 doi: 10.1101/2020.03.24.20042606
- Luo SH, Liu W, Liu ZJ, et al. A confirmed asymptomatic carrier of 2019 novel coronavirus. *Chin Med J (Engl)* 2020;133(9):1123-25. doi: 10.1097/CM9.0000000000000798 [published Online First: 2020/03/10]
- Lytras T, Dellis G, Flountzi A, et al. High prevalence of SARS-CoV-2 infection in repatriation flights to Greece from three European countries. *J Travel Med* 2020 doi: 10.1093/jtm/taaa054 [published Online First: 2020/04/17]
- Meng H, Xiong R, He R, et al. CT imaging and clinical course of asymptomatic cases with COVID-19 pneumonia at admission in Wuhan, China. *J Infect* 2020 doi: 10.1016/j.jinf.2020.04.004 [published Online First: 2020/04/16]
- Pongpirul WA, Mott JA, Woodring JV, et al. Clinical Characteristics of Patients Hospitalized with Coronavirus Disease, Thailand. *Emerg Infect Dis* 2020;26(7) doi: 10.3201/eid2607.200598 [published Online First: 2020/04/09]
- Qian G, Yang N, Ma AHY, et al. A COVID-19 Transmission within a family cluster by presymptomatic infectors in China. *Clin Infect Dis* 2020 doi: 10.1093/cid/ciaa316

Qiu H, Wu J, Hong L, et al. Clinical and epidemiological features of 36 children with coronavirus disease 2019 (COVID-19) in Zhejiang, China: an observational cohort study. *Lancet Infect Dis* 2020 doi: 10.1016/S1473-3099(20)30198-5 [published Online First: 2020/03/30]

See KC, Liew SM, Ng DCE, et al. COVID-19: Four Paediatric Cases in Malaysia. *Int J Infect Dis* 2020;94:125-27. doi: 10.1016/j.ijid.2020.03.049 [published Online First: 2020/04/19]

Tabata S, Imai K, Kawano S, et al. Non-severe vs severe symptomatic COVID-19: 104 cases from the outbreak on the cruise ship 'Diamond Princess' in Japan. *medRxiv* 2020 doi: 10.1101/2020.03.18.20038125

Tan YP, Tan BY, Pan J, et al. Epidemiologic and clinical characteristics of 10 children with coronavirus disease 2019 in Changsha, China. *J Clin Virol* 2020;127:104353. doi: 10.1016/j.jcv.2020.104353 [published Online First: 2020/04/18]

Tian S, Wu M, Chang Z, et al. Epidemiological investigation and intergenerational clinical characteristics of 24 COVID-19 patients associated with supermarket cluster. *medRxiv* 2020 doi: 10.1101/2020.04.11.20058891

Tong ZD, Tang A, Li KF, et al. Potential Presymptomatic Transmission of SARS-CoV-2, Zhejiang Province, China, 2020. *Emerg Infect Dis* 2020;26(5):1052-54. doi: 10.3201/eid2605.200198 [published Online First: 2020/02/25]

Wang X, Fang J, Zhu Y, et al. Clinical characteristics of non-critically ill patients with novel coronavirus infection (COVID-19) in a Fangcang Hospital. *Clin Microbiol Infect* 2020 doi: 10.1016/j.cmi.2020.03.032 [published Online First: 2020/04/07]

Wang Y, Liu Y, Liu L, et al. Clinical outcome of 55 asymptomatic cases at the time of hospital admission infected with SARS-Coronavirus-2 in Shenzhen, China. *J Infect Dis* 2020 doi: 10.1093/infdis/jiaa119 [published Online First: 2020/03/18]

Wang Z, Ma W, Zheng X, et al. Household transmission of SARS-CoV-2. *J Infect* 2020 doi: 10.1016/j.jinf.2020.03.040 [published Online First: 2020/04/14]

Yang N, Shen Y, Shi C, et al. In-flight Transmission Cluster of COVID-19: A Retrospective Case Series. *medRxiv* 2020 doi: 10.1101/2020.03.28.20040097

Zhang J, Tian S, Lou J, et al. Familial cluster of COVID-19 infection from an asymptomatic. *Crit Care* 2020;24 doi: 10.1186/s13054-020-2817-7

Zhou X, Li Y, Li T, et al. Follow-up of asymptomatic patients with SARS-CoV-2 infection. *Clin Microbiol Infect* 2020 doi: 10.1016/j.cmi.2020.03.024 [published Online First: 2020/04/03]

Zou L, Ruan F, Huang M, et al. SARS-CoV-2 Viral Load in Upper Respiratory Specimens of Infected Patients. *N Engl J Med* 2020;382(12):1177-79. doi: 10.1056/NEJMc2001737 [published Online First: 2020/02/20]

Ferretti L, Wymant C, Kendall M, et al. Quantifying SARS-CoV-2 transmission suggests epidemic control with digital contact tracing. *Science* 2020;368(6491):2020.03.08.20032946. doi: 10.1126/science.abb6936 [published Online First: 2020/04/03]

Ganyani T, Kremer C, Chen D, et al. Estimating the generation interval for coronavirus disease (COVID-19) based on symptom onset data, March 2020. *Euro Surveill* 2020;25(17):2020.03.05.20031815. doi: 10.2807/1560-7917.ES.2020.25.17.2000257 [published Online First: 2020/05/07]

He X, Lau EHY, Wu P, et al. Temporal dynamics in viral shedding and transmissibility of COVID-19. *Nat Med* 2020 doi: 10.1038/s41591-020-0869-5 [published Online First: 2020/04/17]

Zhang W. Estimating the presymptomatic transmission of COVID19 using incubation period and serial interval data. *medRxiv* 2020 doi: 10.1101/2020.04.02.20051318