

## **Supplementary material**

### **The potential impact of the COVID-19 pandemic on the tuberculosis epidemic – a modelling analysis**

Lucia Cilloni<sup>1\*</sup>, Han Fu<sup>1\*</sup>, Juan F Vesga<sup>1</sup>, David Dowdy<sup>2</sup>, Carel Pretorius<sup>3</sup>, Sevim Ahmedov<sup>4</sup>, Sreenivas A.Nair<sup>5</sup>, Andrei Mosneaga<sup>5</sup>, Enos Masini<sup>5</sup>, Suvanand Sahu<sup>5</sup>, Nimalan Arinaminpathy<sup>1</sup>

<sup>1</sup> MRC Centre for Global Infectious Disease Analysis, School of Public Health, Imperial College London, United Kingdom

<sup>2</sup> Department of Epidemiology, Johns Hopkins Bloomberg School of Public Health, Baltimore, Maryland, United States of America

<sup>3</sup> Avenir Health, Glastonbury, Connecticut, United States of America

<sup>4</sup> Bureau for Global Health, Office of HIV/AIDS, United States Agency for International Development, Washington, DC, United States of America

<sup>5</sup> Stop TB Partnership, Geneva, Switzerland

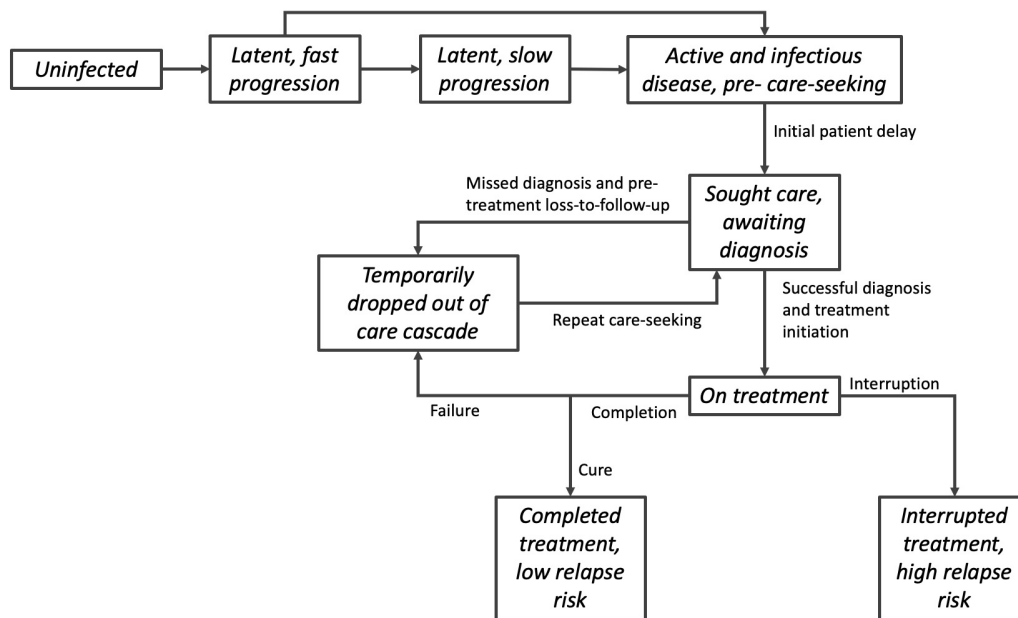
#### **Table of contents**

|   |    |
|---|----|
| 1. Model overviews .....  | 2  |
| Figure S1. Schematic illustration of the basic model framework. ....  | 2  |
| Table S1. Calibration targets for each country, per 100,000 population.....   | 3  |
| Figure S2. Results of model calibration for India .....   | 4  |
| Figure S3. Results of model calibration for Kenya .....   | 5  |
| Figure S4. Results of model calibration for Ukraine.....  | 6  |
| 2. Additional supplementary figures.....  | 7  |
| Figure S5. Projection of long-term TB trends in India .....   | 7  |
| Figure S6. Sensitivity analysis to the duration of the lockdown, and of the restoration period in India .....           | 8  |
| 3. Sensitivity analysis to alternative scenarios for transmission.....  | 9  |
| Figure S7. Sensitivity analysis to the assumption of reduced transmission in India .....                                | 10 |
| 4. An approach for extrapolating country-specific estimates to the Global level.....                                    | 11 |
| Table S2: Excess global TB cases and deaths between 2020 and 2025.....  | 12 |
| Table S3: Estimates for incremental global impact on TB burden by each additional month of lockdown or restoration..... | 12 |
| Table S4. Parameter table for the India model. ....   | 13 |
| Table S5. Parameters in the Kenya model. ....   | 15 |
| References.....   | 19 |

## 1. Model overviews

Our three focal countries reflect contrasting epidemiologies. In India, as with many countries in South- and South-East Asia, tuberculosis (TB) care is dominated by a large private healthcare sector. India also has the world's largest burden of TB, accounting in 2018 for an estimated 27% of global TB incidence.<sup>1</sup> In Kenya, infection of human immunodeficiency virus (HIV) plays a strong role in driving the TB epidemic, with an estimated 27% of incident TB cases in 2018 being HIV coinfected.<sup>1</sup> Ukraine has a high burden of drug-resistant TB (DR-TB), with an estimated 29% of new cases and 46% of previously treated cases in 2018 being resistant to at least rifampicin.<sup>1</sup>

Governing equations for each of these countries are provided in Vesga and colleagues,<sup>2</sup> and the same were used in the current study. However, for the current analysis we adapted the Moldova model in that earlier study to Ukraine, a country having a similar burden of drug resistance but - being a more populous country than Moldova - having a larger TB epidemic in absolute terms.<sup>1</sup> While keeping the same model equations as for Moldova, we fitted the model to World Health Organization (WHO) estimates for TB burden, from Ukraine. Table S1 shows these calibration targets, along with those used for India and Kenya.



**Figure S1. Schematic illustration of the basic model framework.**

While this figure illustrates flows in the underlying model structure, as described above, for each country this framework was further stratified to reflect the difference between public and private sectors (for India); the role of HIV in driving TB (for Kenya); and the co-circulation of drug-sensitive and rifampicin-resistant TB, along with distinct features of the second-line care cascade, including drug sensitivity testing (Ukraine). Full governing equations are provided in Vesga and colleagues.<sup>2</sup>

Figure S1 shows a schematic illustration of the basic framework on which each country model was developed. We assumed that, following reactivation of latent infection, incident TB cases undergo an initial ‘patient delay’, a period of active, infectious TB prior to first presentation for care (calibrated, as with other model parameters, to the available data - see Table S1). Once presented for care, we assumed that a proportion  $p_{Dx}$  would be successfully diagnosed, and further that a proportion  $p_{Tx}$  of diagnosed cases would initiate treatment. Of those presenting for diagnosis, the overall proportion successfully initiating treatment is thus  $(p_{Tx} \times p_{Dx})$ . We assumed that the remaining proportion temporarily drops out of the care cascade, before presenting for care once again after a certain delay (Tables S4 - S6). In this way, the models capture the effect of missed diagnoses and initial loss-to-follow up (through their effects on  $p_{Dx}$  and  $p_{Tx}$  respectively), on the delay to treatment initiation. Amongst those who have initiated treatment, we assumed that those completing treatment and bring cured would enter a compartment with low relapse risk; those failing treatment would temporarily drop out of the care cascade; and those interrupting treatment would enter a state of temporary bacteriological suppression, with high relapse risk.

This basic framework was developed further to reflect the epidemiological conditions and respective care cascades in each country, as described in Vesga and colleagues,<sup>2</sup> and in brief: for India, by stratifying diagnosis and treatment by public and private providers; for Kenya, by stratifying the whole care cascade and natural history by status of HIV and antiretroviral treatment (ART); and for Ukraine, by stratifying the whole care cascade and natural history by drug resistance status, as well as by new- and previously-treated cases.

As described in the main text, calibrations were performed by Markov Chain Monte Carlo (MCMC) simulation. In particular, we constructed log-normal likelihoods capturing the central estimates and uncertainty ranges of each of the calibration targets listed in Table S1. We constructed the overall posterior density straightforwardly as a product over these likelihood terms (equivalently, a summation over log-likelihoods). Certain model parameters have little systematic data, for example, the degree to which the quality of TB diagnosis in the private sector in India compares to that in the public sector.<sup>3</sup> For these parameters we adopted prior distributions with broad ranges. Adopting uniform distributions for these and other model parameters over the ranges shown in Tables S4 - S6, we sampled from the posterior density using an adaptive MCMC algorithm, as described in Haario, Saksman, and Tamminen.<sup>4</sup> The resulting calibrations are shown in Figures S2 - S4.

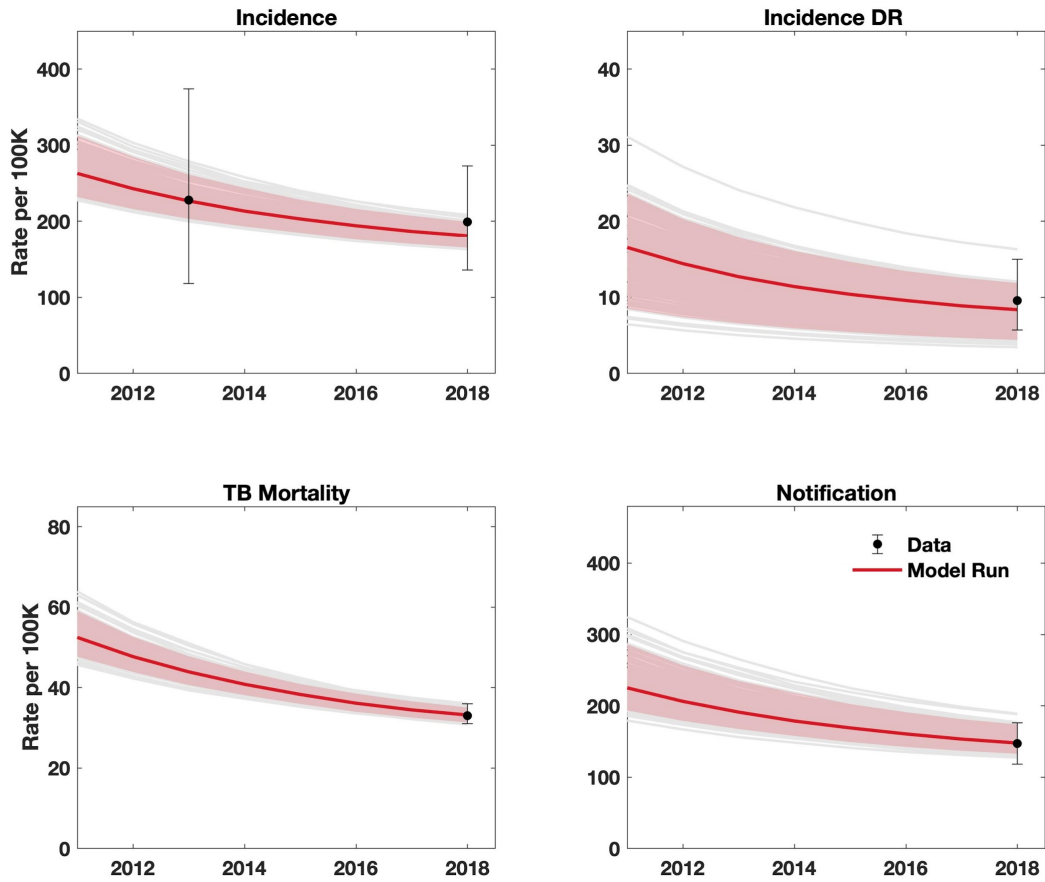
To simulate the lockdown impact, we assumed all disruptions listed in Table 1 to be in full effect during the period of the lockdown (2 months for a moderate scenario, and 3 months for a severe scenario). Following the lifting of the lockdown, we assumed that all TB services would be gradually restored to normal (pre-lockdown) levels in a linear fashion, over the course of a restoration period (2 months for a moderate scenario, and 10 months for a severe scenario). However, overall transmission rates depend not on the readiness of the TB programme, but on the pace at which normal community contact rates are restored. In high-burden, low-income settings, any gradual easing of a lockdown would be complicated by economic pressure, particularly on the most disadvantaged in society to return to their livelihoods. Accordingly, in the main text we assumed that contact rates in the community return to normal at the same time as lifting the lockdown. However, in section 3 below we present some sensitivity analysis to this assumption, showing that it does not substantially affect the overall practical implications of our analysis.

**Table S1. Calibration targets for each country, per 100,000 population**

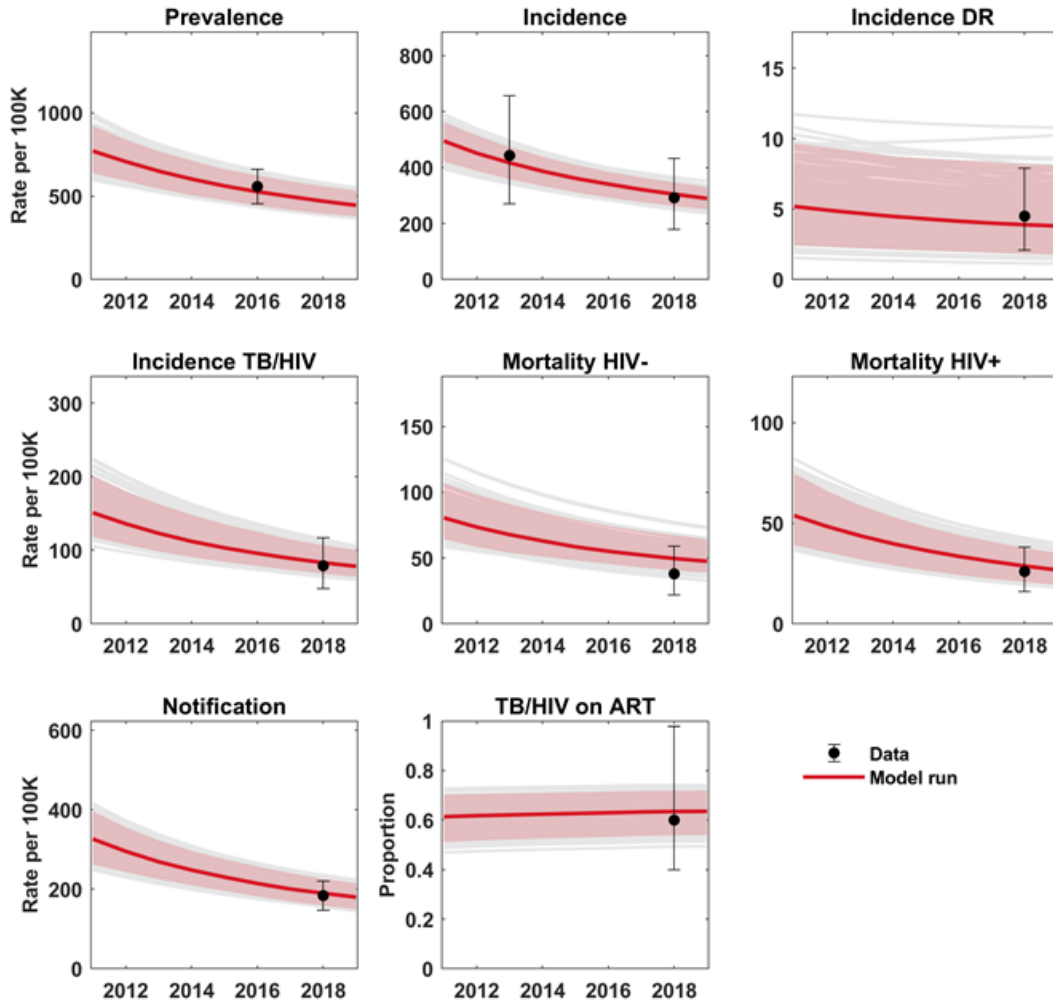
| Country   | Calibration target                          | Value<br>[95% uncertainty range] | Source                   |
|---|---|----------------------------------|--------------------------|
| India   | TB incidence (2013)                         | 228 [118-374]                    | WHO <sup>1</sup>         |
|   | TB incidence (2018)                         | 199 [136-273]                    |                          |
|   | TB incidence, DR (2018)                     | 9.6 [5.7-15]                     |                          |
|   | TB mortality (2018)                         | 33 [31-36]                       |                          |
|   | TB notification (2018)                      | 147 [+/-20%]                     |                          |
| Kenya   | TB prevalence (2016)                        | 558 [455-662]                    | Enos et al. <sup>5</sup> |
|   | TB incidence (2013)                         | 443 [271-656]                    | WHO <sup>1</sup>         |
|   | TB incidence (2018)                         | 292 [179-432]                    |                          |
|   | TB incidence, DR (2018)                     | 4.5 [2.1-7.9]                    |                          |
|   | TB incidence, HIV-positive (2018)           | 79 [48-117]                      |                          |
|   | TB mortality, HIV-positive (2018)           | 26 [16-38]                       |                          |
|   | TB mortality, HIV-negative (2018)           | 38 [22-59]                       |                          |
|   | TB notification (2018)                      | 184 [+/-20%]                     |                          |
| Antiretroviral therapy coverage among HIV-positive incident TB cases (2018) | 60% [40-98%]                                |                                  |                          |
| Ukraine   | TB incidence (2018)                         | 80 [52-155]                      | WHO <sup>1</sup>         |
|   | TB incidence, DR (2018)                     | 29 [18-41]                       |                          |
|   | TB mortality (2018)                         | 13 [11-15]                       |                          |
|   | TB notification (2018)                      | 60 [+/-20%]                      |                          |
|   | DR-TB among new cases (2018)                | 29% [28-30%]                     |                          |
|   | DR-TB among previously treated cases (2018) | 46% [45-48%]                     |                          |

Central estimates are presented with corresponding 95% uncertainty intervals in square brackets. We assigned +/- 20% of central estimates as uncertainty ranges when the original data source is not available. Rates per 100,000

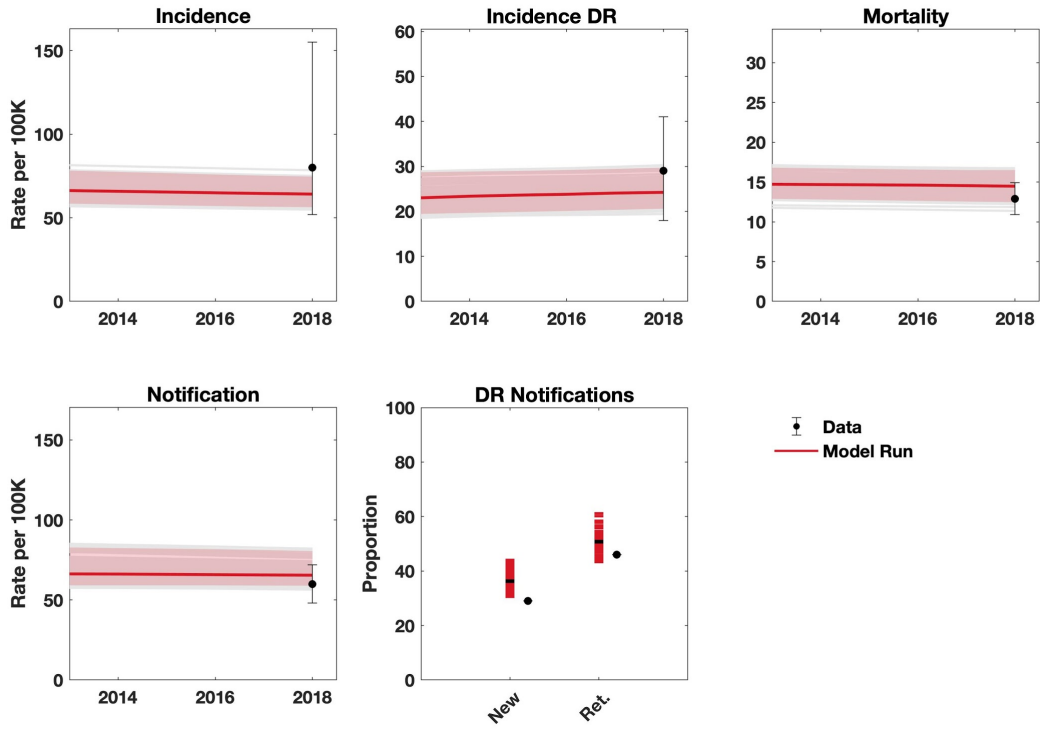
population are presented if otherwise stated. Abbreviations: HIV: human immunodeficiency virus, DR: rifampicin-resistant/multi-drug-resistant, TB: tuberculosis, WHO: World Health Organization.



**Figure S2. Results of model calibration for India.** Points in black show data, while red lines show model simulations. Shaded areas show 95% Bayesian credible intervals.

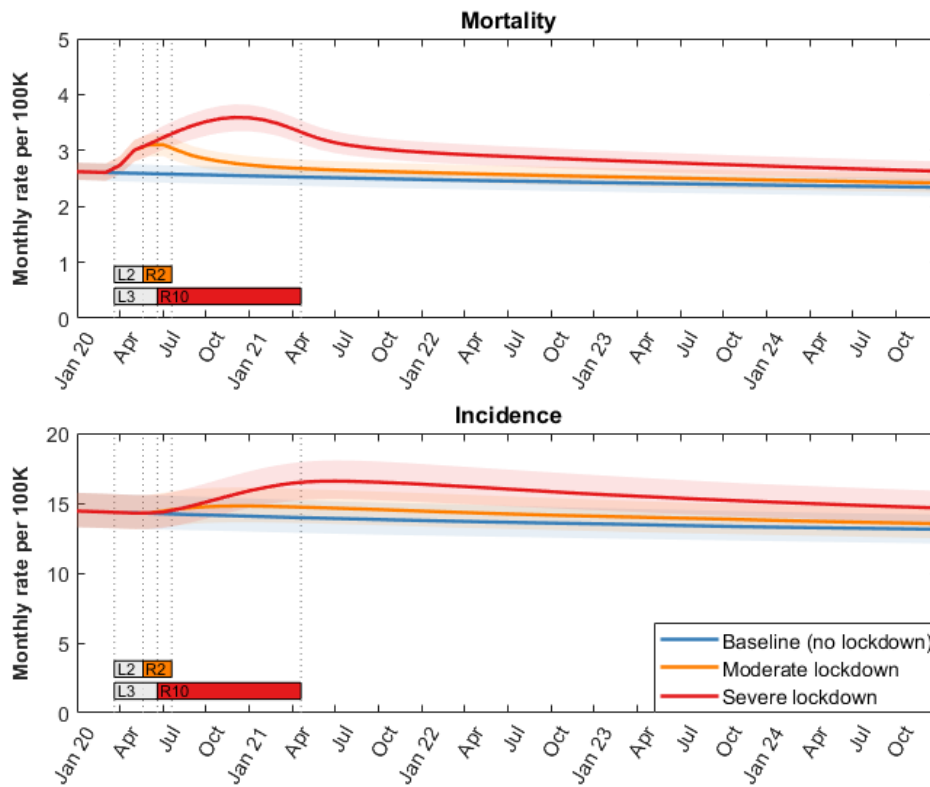


**Figure S3. Results of model calibration for Kenya.** Points in black show data, while red lines show model simulations. Shaded areas show 95% Bayesian credible intervals.

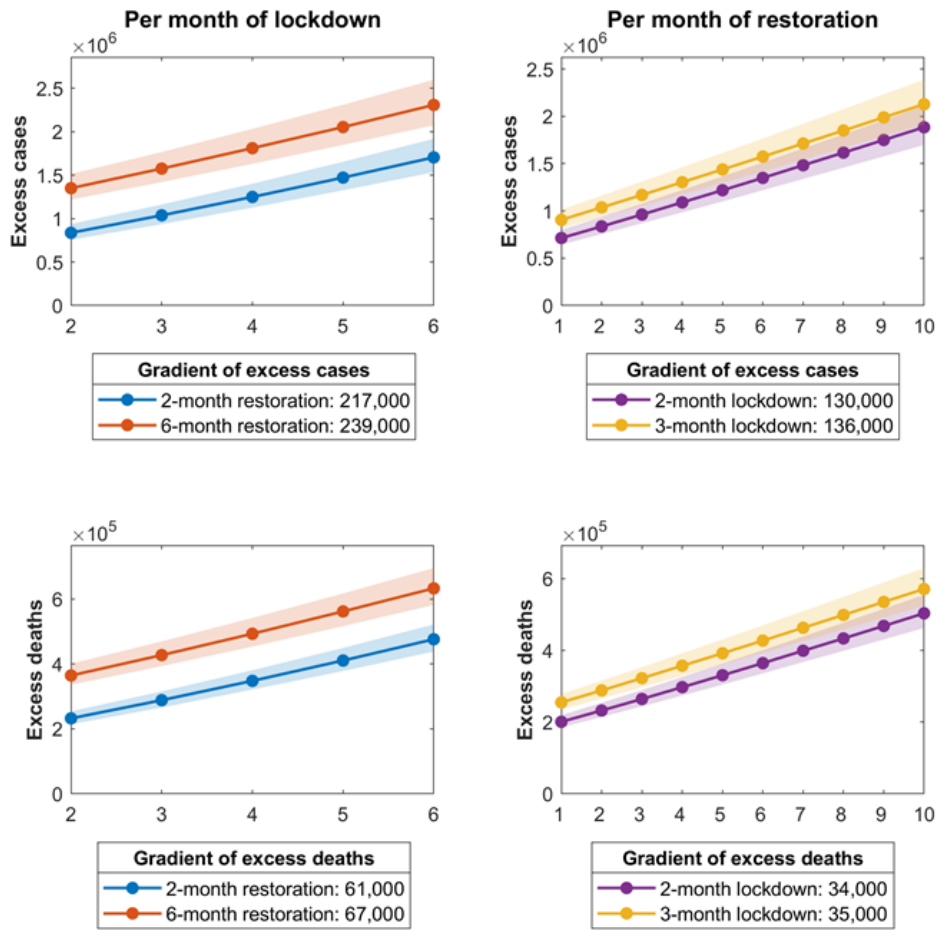


**Figure S4. Results of model calibration for Ukraine.** Points in black show data, while red lines show model simulations. Shaded areas show 95% Bayesian credible intervals.

## 2. Additional supplementary figures



**Figure S5. Projection of long-term TB trends in India**, as a result of the lockdown. The figure illustrates a pronounced short-term increase in TB mortality (upper panel), followed in the longer term by a ‘tail’ that is fueled by a persistent increase in incidence (lower panel). As mentioned in the main text, even in the moderate lockdown scenario (red curve), incidence remains at least 4% higher than the baseline, for a period of 32 months following the lockdown.



**Figure S6. Sensitivity analysis to the duration of the lockdown, and of the restoration period in India.** Shaded intervals show 95% credible intervals, and the different lines show different scenarios for the duration being held fixed. Numbers in legends show central estimates for the per-month gradients of each of these lines. For example, in the top right panel, when the restoration period is held fixed at 2 months (blue line), each additional month of lockdown would cause an additional 254,000 cases between 2020 and 2025. Within each plot, the gradients of these lines are within 10% variation of their average: for the results in the main text, we therefore estimated the average gradient across each pair of scenarios.



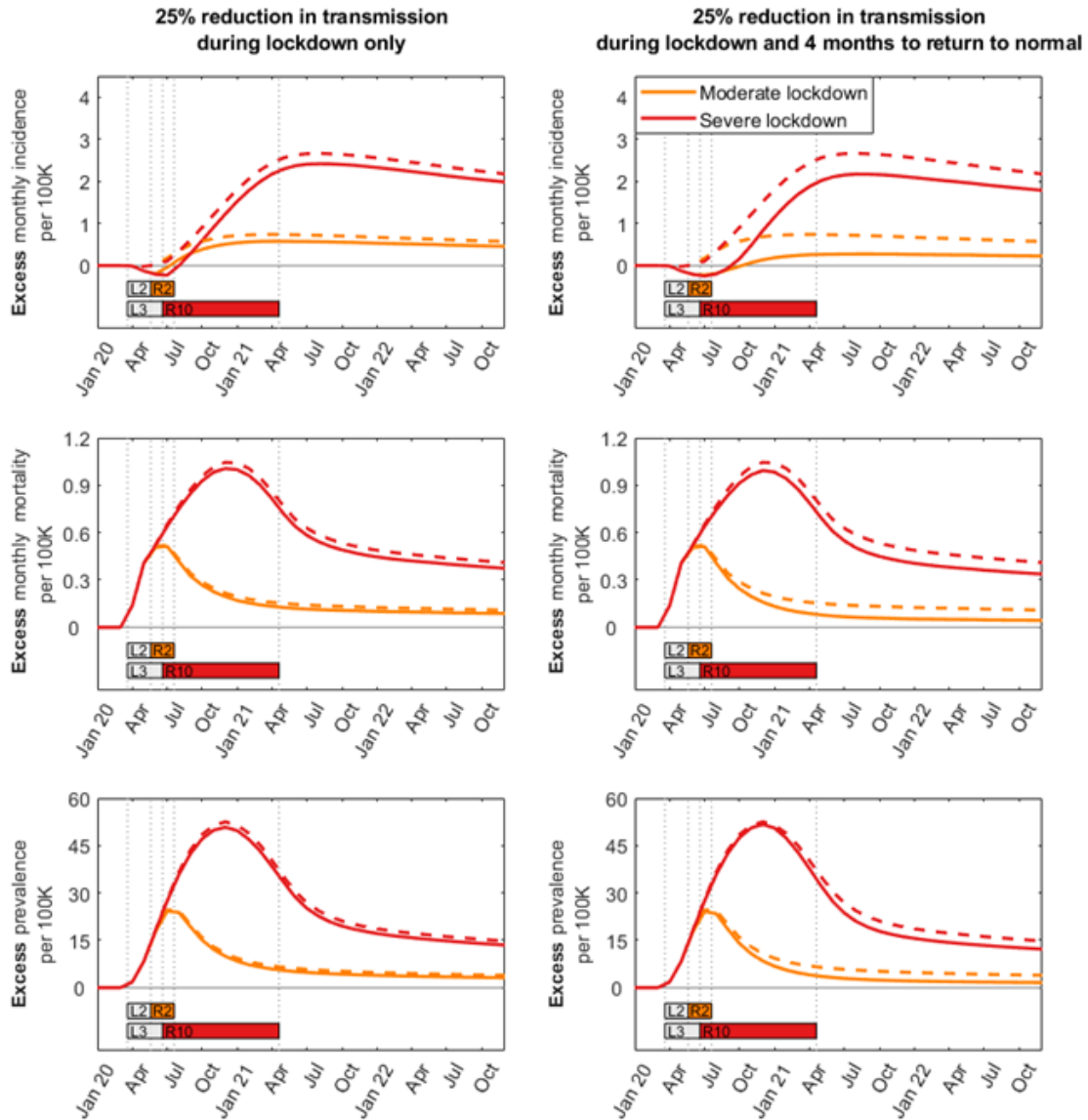
### 3. Sensitivity analysis to alternative scenarios for transmission

In results presented in the main text, we assumed the following conditions for TB transmission, during and after a lockdown: (i) that the net effect of decreased community transmission and increased household transmission would be to lower overall transmission by 10% and (ii) that this reduction is lifted immediately upon lifting of the lockdown. Given uncertainty in these scenarios, Figure S7 shows additional scenarios testing both of these assumptions. For ease of comparison with the baseline (no lockdown) scenario, these plots show the excess monthly incidence, mortality and undetected TB, relative to that baseline. Dashed lines show these excess quantities under the scenario adopted in the main text (Table 1).

Left-hand panels show a stronger lockdown-related reduction in TB transmission, of 25%, that is relaxed as soon as the lockdown is lifted. They illustrate a transient reduction in incidence (top panel) during the lockdown period, that is followed by an increase in incidence over the subsequent months. However, the accumulation of undetected TB (bottom panel) arises from lengthened care-seeking delays, and missed opportunities for diagnosis and treatment initiation: it is thus less affected than incidence, by short-term reductions in transmission. As a result, short-term reductions in mortality remain as pronounced as those illustrated in Figure 2.

Right-hand panels show a scenario where, in addition to a 25% reduction in transmission, we assume that it takes 4 months for community contact rates to return to normal. The figures illustrate that, for long-term incidence, the important factor is whether TB services can be restored more or less rapidly than the rate at which community transmission returns to normal. Under a moderate lockdown scenario with a 2-month restoration (yellow curve), the long-term impact on incidence appears minimised. By contrast, under a severe lockdown scenario with a 4-month restoration (red curve), incidence increases are as enduring as those illustrated in the main text.

We caution that the models do not include households or any other type of population structure. As with any models assuming such ‘well-mixed’ populations, these simulations are therefore likely to overestimate the rate-of-change in TB incidence over short timescales, such as the drop in TB incidence shown during the lockdown period. Nonetheless, these results are illustrative of the overall importance of changes in transmission. As discussed in the main text, they also underscore the practical implications of the overall analysis.



**Figure S7. Sensitivity analysis to the assumption of reduced transmission in India.** In the main text we assumed a reduction of 10% in transmission, reflecting the potential net effect of decreased infection in the community, and increased infection in the household. Given the uncertainty around this parameter, here we present dynamics in the alternative case of a 25% decline, assumed to apply during the lockdown. Unlike Figures 1 and 2 in the main text, these figures present the *excess* incidence, mortality and undetected TB per month (compared to the baseline). For comparison, dashed lines show the scenario presented in the main text (10% reduction in transmission, lifted at same time as lockdown being released). Left-hand panels show the scenario where (as in the main text) transmission rates return immediately to normal after lifting the lockdown, and right-hand panels show an alternative scenario where transmission rates take 4 months to return to normal. For clarity, plots show only central estimates and not uncertainty intervals. Model projections that appear *robust* to these scenarios are: the short-term increases in TB mortality (middle panels); and the accumulation of undetected TB (bottom panels). Model projections that appear *sensitive* to these scenarios are: the reduction in incidence during the lockdown period; and the long-term elevation in incidence, under the moderate lockdown scenario (both in top panels).

#### 4. An approach for extrapolating country-specific estimates to the Global level

The methods described for the country analyses can be extended to other country settings, as more data becomes available. Here, and in the interest of timely estimates, we adopted a simple approach to extrapolate the India, Kenya and Ukraine modelling analysis to global estimates.

First, baseline trends for key TB indicators were established: TB incidence (by HIV and DR status), notification (by DR status) and mortality (by HIV status). These trends are based on penalized B-splines, a method that is widely used for projecting trends forward in time.<sup>6</sup> We used data that is published annually by WHO for more than 200 countries.<sup>1</sup> TB prevalence data were last published by WHO in 2017 (i.e. estimates for 2016), and we obtained prevalence trends for the purposes of this analysis by applying the 2016 ratio between incidence and prevalence to the incidence trends estimated via cubic splines.

The above trends were readily available from an analysis conducted late 2019,<sup>7</sup> following the publication of the Global tuberculosis report 2019. It should be noted that interventions that define TB programs are implicitly represented in these statistical trends. There is no explicit scale-up of specific interventions modelled with this statistical method, and the resulting ~1% annual decline in TB burden (measured for example in TB incidence decline), leads to an interpretation that these trends represent ‘status quo’ TB program efforts.

Next, we applied the impact, relative to status-quo baseline, of each modelled scenario of lockdown-related disruption on TB (represented by duration of lockdown and duration of restoration post lockdown) to defined groups of countries: the India model informed projections for countries with high TB burden and private sector involvement; the Kenya model informed projections for countries where HIV is a driver of the TB epidemic; and the Ukraine model informed projections for countries with a high proportion of drug-resistant TB, and hospital-based care delivery systems. Countries not in these groups were assigned the average impact of the three country models. Impact estimates were applied to cubic spline projections of TB cases and deaths reported by WHO.

Direct adjustments of ‘status quo’ trends in TB incidence, mortality and notification were thus obtained at country level, and aggregated to the global level. Table S2 summarizes the excess TB cases and TB deaths that would result from the two scenarios examined in the main text: a ‘moderate’ scenario of 2-month lockdown and 2-month restoration and a ‘severe’ scenario of 3-month lockdown and 10-month restoration. The relative increases are, by construction, a weighted average of the same relative impacts estimated for India, Kenya and Ukraine and is thus weighted towards the results for India.

At global level, cumulative impact for 2020-2025 is significant and poses a serious challenge for global and country stakeholders in the fight against TB to address. Globally, a scenario of 3-month lockdown and 10-month restoration, could lead to an additional 6.3 million cases of TB between 2020 and 2025, and an additional 1.4 million TB deaths during this period. TB burden by 2021 could increase to levels last seen 5 years ago, posing a serious setback to recent progress in the fight against TB.

The characteristics of lockdown and restoration are likely to vary by country context, mitigation policies, economic outlook and other country-specific determinants. TB programmatic variables will therefore be impacted differently at country level, and impact on TB burden would differ too. Table S3 presents a heuristic method for relative impact on global TB burden, per month of lockdown and per month taken to restore normal TB services (that is, a global projection of Table 3 in the main text). This heuristic method can be applied to refine estimates for global TB impact as more clarity emerges regarding country lockdown and recovery approaches, particularly for those countries that contribute most to the global TB burden.

**Table S2: Excess global TB cases and deaths between 2020 and 2025, as a result of the different scenarios for COVID-related lockdowns.**

| Excess cases between 2020-2025<br>(% increase) |   | Excess deaths between 2020-2025<br>(% increase) |   |
|--|---|---|---|
| 2-month lockdown + 2-month restoration         | 3-month lockdown + 10-month restoration | 2-month lockdown + 2-month restoration          | 3-month lockdown + 10-month restoration |
| 1,826,400 (3.1%)                               | 6,331,100 (10.7%)                       | 342,500 (4.0%)                                  | 1,367,300 (16.0%)                       |

**Table S3: Estimates for incremental global impact on TB burden by each additional month of lockdown or restoration**

| Excess cases between 2020-2025<br>(% increase) |                                | Excess deaths between 2020-2025<br>(% increase) |                                |
|--|--------------------------------|---|--------------------------------|
| For every month of lockdown                    | For every month of restoration | For every month of lockdown                     | For every month of restoration |
| 608,400 (1.0%)                                 | 420,400 (0.7%)                 | 126,100 (1.5%)                                  | 83,200 (1.0%)                  |

## 5. Additional Supplementary Tables

**Table S4. Parameter table for the India model.** Entries highlighted in yellow are those that are affected by the lockdown scenarios shown in Table 1.

| Parameter  | Value                                  |   | Source/Notes  |
|--|--|---|---|
| <b>TB natural history</b>  |  |   |   |
| Mean rate of transmission per TB case                              | DS-TB                                  | 19.7<br>(95% CrI 19.5 -19.8)  | Model estimates   |
|  | DR-TB                                  | 4.92<br>(95% CrI 4.8 - 5.1)   |   |
| Relative infectivity, post vs pre-care-seeking                     | [0.8 – 1.2]                            |   | Assumed range (uniform distribution)  |
| TB disease progression rates                                       | Fast progressors                       | 0.083<br>[0.066 - 0.099]  | Ragonnet et al. <sup>8</sup>  |
|  | Slow progressors                       | $5.9 \times 10^{-4}$<br>[ $4.8 \times 10^{-4}$ - $7.1 \times 10^{-4}$ ] |   |
| Stabilisation of progression from fast to slow progressors         | 0.87<br>[0.70-1.0]                     |   | Ragonnet et al. <sup>8</sup>  |
| Relapse, per-capita hazard rates                                   | Relapse following treatment completion | 0.032   | Driver et al., <sup>9</sup> Thomas et al., <sup>10</sup> Menzies et al. <sup>11</sup>   |
|  | Relapse following treatment default    | 0.14  |   |
|  | Relapse >2 years after treatment       | 0.0015  |   |
| 'Stabilisation' of relapse risk following treatment                | 0.5                                    |   | Based on Thomas et al.: <sup>10</sup> most relapse occurs in first 2 years after treatment.   |
| TB mortality rate  | 0.26<br>[0.14 – 0.30]                  |   | Tiemersma et al., <sup>12</sup> specified together to yield 50% cure, 50% mortality in average of 3 years   |
| Spontaneous cure   | 0.16<br>[0.14 – 0.18]                  |   |   |
| Reduced susceptibility from past infection                         | [0.25 – 0.75]                          |   | Assumed range (uniform distribution)  |
| <b>Health system</b>   |  |   |   |
| Per-capita rate of initial presentation to care                    | 2.2<br>(95% CrI 2.1 - 2.4)             |   | Model estimate  |
| Per-capita rate of secondary care-seeking                          | 12<br>[9.6 – 14]                       |   | Assumed mean secondary patient delay of 1 month   |
| Proportion visiting the public sector at each care-seeking episode | 0.46<br>(95% CrI 0.41 - 0.56)          |   | Model estimate  |
| Treatment initiation delay   | 52                                     |   | Model assumption, corresponds a mean treatment delay of 1 week  |
| Probability of diagnosis per patient-provider interaction          | Public sector                          | 0.83<br>[0.8 – 0.84]  | Subbaraman et al. <sup>13</sup>   |
|  | Private sector                         | 0.58<br>[0.50 - 0.70]   | Model estimate  |
| Treatment initiation probability                                   | Public sector                          | 0.88<br>[0.86 - 0.89]   | Subbaraman et al. <sup>13</sup>   |
|  | Private sector                         | 0.42<br>[0.30 - 0.70]   | Model estimate  |
| First-line treatment outcomes (proportions)                        | Death                                  | 0.04, 0.09  | WHO global TB database <sup>14</sup> Proportions are transformed into per-capita hazard rates in the model, based on the assumption of a mean duration of 6 months for completing FL treatment completion (includes success and failure). For example, given treatment completion rate = 2 year <sup>-1</sup> , per capita hazard rate of deaths is derived using $0.04 \times (2 / (0.90 + 0.01))$ . |
|  | Loss to follow-up                      | 0.049, 0.11   |   |
|  | Failure                                | 0.01, 0.02  |   |
|  | Success                                | 0.90, 1.98  |   |

|  |                     |                               |  |
|--|---------------------|-------------------------------|--|
| Second-line treatment outcomes (proportions)   | Death               | 0.20, 0.16                    | WHO global TB database <sup>14</sup> Proportions are transformed into per-capita hazard rates in the model, based on the assumption of a mean duration of 2 years for completing SL treatment completion (includes success and failure). |
|  | Loss to follow-up   | 0.20, 0.17                    |  |
|  | Failure             | 0.09, 0.08                    |  |
|  | Success             | 0.51, 0.42                    |  |
| Treatment default rates for private sector     | FL                  | 2.1<br>[1.6 - 3.4]            | Model estimates  |
|  | SL                  | 50<br>[40 - 60]               |  |
| Probability of receiving DST                   | Public sector       | 0.30<br>(95% CrI 0.25 – 0.36) | Model estimate   |
|  | Private sector      | 0                             | Model assumption   |
| Proportion of acquiring DR during FL treatment | 0.02<br>[0.01-0.05] |                               | Model assumption   |
| <b>Demographics</b>                            |                     |                               |  |
| Birth rate                                     | 0.024               |                               | WHO GHO data <sup>15</sup> , adjusted to yield 2.4% annual population growth from 1970.  |
| Background mortality                           | 0.015               |                               | WHO GHO data <sup>15</sup> , corresponds to mean life expectancy of 67 years.  |

Abbreviations: CrI: credible interval, DR: drug-resistant (i.e. rifampicin-resistant), DS: drug-susceptible, DST: drug susceptibility test, FL: first-line, GHO: Global Health Observatory, SL: second-line, TB: tuberculosis, WHO: World Health Organization.

**Table S5. Parameters in the Kenya model.** Entries highlighted in yellow are those that are affected by the lockdown scenarios shown in Table 1.

| Parameter  | Value   |   | Source/Notes  |
|--|---|---|---|
| <b>TB natural history</b>  |   |   |   |
| Mean rate of transmission per TB case (infections per year)                | DS-TB   | 7.3<br>(95% CrI 5.7-9.1)  | Model estimates   |
|  | DR-TB   | 6.5<br>(95% CrI 5.2-8.1)  |   |
| Relative infectivity, post- vs pre-care-seeking                            | [0.80 -1.2]   |   | Model assumption  |
| Per-capita rate of progression to TB disease from latent TB                | Fast progressors                                    | 0.083<br>[0.066-0.099]  | Ragonnet et al. <sup>8</sup>  |
|  | Slow progressors                                    | $5.9 \times 10^{-4}$<br>[ $4.8 \times 10^{-4}$ - $7.1 \times 10^{-4}$ ] |   |
| Stabilisation of progression from 'fast' to 'slow' progressors             | 0.87<br>[0.70-1.05]                                 |   | Ragonnet et al. <sup>8</sup>  |
| Relapse, per-capita hazard rates   | Relapse following treatment completion              | 0.032   | Driver et al., <sup>9</sup> Thomas et al., <sup>10</sup> Menzies et al. <sup>11</sup>   |
|  | Relapse following treatment default                 | 0.14  |   |
|  | Relapse >2 years after treatment                    | 0.0015  |   |
| Stabilisation of relapse risk following treatment                          | 0.5   |   | Based on Thomas et al.: <sup>10</sup> most relapse occurs in first 2 years after treatment.   |
| TB mortality, per-capita hazard rates                                      | HIV <sup>(-)</sup>                                  | 0.17<br>[0.13 – 0.20]   | Tiemersma et al., <sup>12</sup> and assumed untreated HIV show a higher risk of TB mortality  |
|  | HIV <sup>(+)</sup>                                  | 0.22<br>(95%CrI 0.15 – 0.35)  |   |
| Per-capita rate of spontaneous cure  | 0.17<br>[0.13 – 0.20]                               |   | Tiemersma et al. <sup>12</sup>  |
| Reduced susceptibility from past infection                                 | 0.36<br>(95% CrI 0.26 – 0.50)                       |   | Model estimate  |
| Relative infectiousness, HIV <sup>(+)</sup> vs HIV <sup>(-)</sup>          | 0.96<br>(95% CrI 0.81 – 1.00)                       |   | Model estimate  |
| Increased risk of TB progression, HIV <sup>(+)</sup> vs HIV <sup>(-)</sup> | 26<br>[21-31]                                       |   | Getahun et al., <sup>16</sup> Selwyn et al. <sup>17</sup>   |
| <b>Health system</b>   |   |   |   |
| Per-capita rate of initial presentation to care                            | HIV <sup>(-)</sup> and HIV <sup>(+)</sup> untreated | 1.3<br>(95% CrI 0.78 - 1.9)   | Model estimate, corresponds to mean initial patient delay of 9.5 months (95% CrI 6.3 - 15) for HIV <sup>(-)</sup> and HIV <sup>(+)</sup> untreated and 5.0 months (95% CrI 2.1-9.3) for HIV <sup>(+)</sup> on ART |
|  | HIV <sup>(+)</sup> on ART                           | 2.4<br>(95% CrI 1.3 - 5.7)  |   |
| Per-capita rate of repeat care-seeking                                     | HIV <sup>(-)</sup> and HIV <sup>(+)</sup> untreated | 12<br>[9.6 - 14]  | Assumed mean secondary patient delay of 1 month   |
|  | HIV <sup>(+)</sup> on ART                           | 2.4<br>(95% CrI 1.3 - 5.7)  | Assumed the same rate as initial care-seeking   |
| Per-capita rate of treatment initiation                                    | 52  |   | Model assumption, corresponds to 1 week delay   |
| Probability of diagnosis per patient-provider interaction ( $p_{Dx}$ )     | HIV <sup>(-)</sup> and HIV <sup>(+)</sup> untreated | 0.30<br>(95% CrI 0.24 - 0.40)   | Model estimates, with constraint that a higher probability for HIV <sup>(+)</sup> on ART  |
|  | HIV <sup>(+)</sup> on ART                           | 0.74<br>(95% CrI 0.61 - 0.80)   |   |
| Diagnosis probability before NTP expansion, relative to after              | 0.45<br>(95% CrI 0.28 - 0.67)                       |   | Model estimate  |
| Following diagnosis, proportion initiating treatment ( $p_{Tx}$ )          | 0.80<br>[0.77 - 0.82]                               |   | Tollefson et al. <sup>18</sup>  |

|   |  |                        |   |
|---|--|------------------------|---|
| Probability of receiving drug sensitivity test (provided by Xpert)                    | 0.46<br>[0.37 - 0.55]                                      |                        | WHO Global TB Report 2019 <sup>1</sup>  |
| First-line treatment outcomes (proportions)   | Death: HIV <sup>(-)</sup> , HIV <sup>(+)</sup>             | 0.045, 0.12            | WHO global TB database <sup>14</sup><br>Proportions are transformed into per-capita hazard rates in the model, based on the assumption of a mean duration of 6 months for completing first-line treatment (includes success and failure). For example, given treatment completion rate = 2 year <sup>-1</sup> , per capita hazard rate of default in HIV <sup>(-)</sup> was derived by 0.045*(2/(0.89+0.0042)). |
|   | Loss to follow-up: HIV <sup>(-)</sup> , HIV <sup>(+)</sup> | 0.058, 0.053           |   |
|   | Success: HIV <sup>(-)</sup> , HIV <sup>(+)</sup>           | 0.89, 0.82             |   |
|   | Failure: HIV <sup>(-)</sup> , HIV <sup>(+)</sup>           | 0.0042, 0.0035         |   |
| Second-line treatment outcomes (proportions)  | Death  | 0.19                   | WHO global TB database <sup>14</sup><br>Proportions are transformed into per-capita hazard rates in the model, based on the assumption of a mean duration of 2 years for completing second-line treatment completion (includes success and failure). HIV-related risk of death was further applied based on the observations in first-line treatment.   |
|   | Loss to follow-up  | 0.083                  |   |
|   | Success  | 0.72                   |   |
|   | Failure  | 0.01                   |   |
| Per-capita hazard of acquiring DR during first-line treatment                         | [0.01-0.05]  |                        | Model assumption  |
| Probability of initiating second-line treatment after failure of first-line treatment | 0.80   |                        | Model assumption  |
| ART initiation rate   | 4.0<br>(95% CrI 2.7- 6.1)                                  |                        | Model estimate  |
| Reduced risk of TB progression, HIV <sup>(+)</sup> on ART vs untreated                | 0.35<br>[0.28-0.44]  |                        | Suthar et al. <sup>19</sup>   |
| Reduced risk of TB progression among HIV <sup>(+)</sup> on ART, with vs without IPT   | 0.63<br>(95% CrI 0.45- 0.76)                               |                        | Rangaka et al. <sup>20</sup>  |
| Fraction of newly recruited ART patients receiving IPT                                | 0.63<br>[0.50-0.76]  |                        | Kenya TB programme  |
| IPT completion rate   | 2  |                        | WHO latent TB guideline, <sup>21</sup> corresponds to 6 months of IPT   |
| Probability of receiving HIV test   | In TB care cascade   | 0.97                   | WHO Global TB Report 2019 <sup>1</sup>  |
|   | Not seeking TB care  | 0.12                   | Olney et al. <sup>22</sup>  |
| Probability of initiating ART treatment and achieving viral suppression               | In TB care cascade   | 0.95                   | UNAIDS Data 2017 <sup>23</sup>  |
|   | Not seeking TB care  | 0.64                   |   |
| ART drop-out, per-capita hazard rate  | 0.16   |                        | Olney et al. <sup>22</sup>  |
| <b>Demographics</b>   |  |                        |   |
| Population growth rate  | 0.155  |                        | WHO GHO data, <sup>15</sup> adjusted to simulate population growth from 1970  |
| Background mortality, per-capita hazard rates   | HIV <sup>(-)</sup>   | 0.015                  | WHO GHO data, <sup>15</sup> corresponds to life expectancy of 67 years old  |
|   | HIV <sup>(+)</sup> untreated                               | 0.097<br>[0.078-0.12]  | Mangal et al., <sup>24</sup> corresponds to mean survival of 10.3 years   |
|   | HIV <sup>(+)</sup> on ART                                  | 0.028<br>[0.022-0.033] | Assumed that ART extends life to as far as can be observed (36 years)   |

Abbreviations: ART: Antiretroviral treatment, CrI: credible interval, DR: drug-resistant (i.e. rifampicin-resistant), DS: drug-susceptible, DST: drug susceptibility test, GHO: Global Health Observatory, HIV: human immunodeficiency virus, IPT: isoniazid preventive therapy, NTP: National TB Programme, TB: tuberculosis, WHO: World Health Organization, USAIDS: Joint United Nations Programme on HIV/AIDS.



**Table S6. Table of parameters for the Ukraine model.** Entries highlighted in yellow are those that are affected by the lockdown scenarios shown in Table 1.

| Parameter  | Value                                     |                            | Source/Notes   |
|--|---|----------------------------|--|
| <b>TB natural history</b>  |   |                            |  |
| Mean rate of transmission per TB case                            | DS-TB                                     | 1.4<br>95% CrI 1.1 - 1.5)  | Model estimates  |
|  | DR-TB                                     | 4.2<br>(95% CrI 4.1 - 4.2) |  |
| Relative infectivity, post vs pre-care-seeking                   | [0.8 – 1.2]                               |                            | Model assumption (uniform distribution)  |
| Proportion infections being ‘fast’ progressors to active disease | 0.14<br>[0.11 – 0.17]                     |                            | Vynnycky & Fine <sup>25</sup>  |
| Breakdown to active disease                                      | 0.001                                     |                            | Horsburgh et al. <sup>26</sup>   |
| Relapse, per-capita hazard rates                                 | Relapse following treatment completion    | 0.032                      | Driver et al., <sup>9</sup> Thomas et al., <sup>10</sup> Menzies et al., <sup>11</sup>   |
|  | Relapse following treatment default       | 0.14                       |  |
|  | Relapse >2 years after treatment          | 0.0015                     |  |
|  | Relapse in DR recovered from FL treatment | 0.7                        |  |
| ‘Stabilisation’ of relapse risk following treatment              | 0.5                                       |                            | Based on Thomas et al.: <sup>10</sup> most relapse occurs in first 2 years after treatment.  |
| TB mortality rate  | 0.13<br>[0.1 – 0.18]                      |                            | Tiemersma et al., <sup>12</sup> specified together to yield 50% cure, 50% mortality in average of 3 years  |
| Spontaneous cure   | 0.16<br>[0.14 – 0.18]                     |                            |  |
| Reduced susceptibility from past infection                       | [0.25 – 0.75]                             |                            | Assumed range (uniform distribution)   |
| <b>Health system</b>   |   |                            |  |
| Per-capita rate of initial presentation to care                  | 1.10<br>(95% CrI 1.00 - 1.20)             |                            | Model estimate   |
| Secondary care-seeking, per-capita hazard rate                   | 12<br>[9.6-14.4]                          |                            | Assumed mean secondary patient delay of 1 month  |
| Treatment initiation delay                                       | 52  |                            | Model assumption, corresponds to 1 week delay.   |
| Probability of diagnosis per patient-provider interaction        | 0.84<br>[0.80 - 0.95]                     |                            | WHO Global TB Report 2019, <sup>1</sup> assumption to match average TB treatment coverage of 75% assuming that TB coverage is the product $\epsilon\omega$ . |
| Treatment initiation probability                                 | 0.93<br>[0.90 - 1]                        |                            | WHO Global TB Report 2019, <sup>1</sup> assumption to match average TB treatment coverage of 75% assuming that TB coverage is the product $\epsilon\omega$ . |
| SL treatment initiation probability                              | 0.94<br>(95% CrI 0.90 – 0.95)             |                            | Model estimate   |
| Probability of receiving DST (provided by Xpert)                 | New cases                                 | 0.74                       | ECDC surveillance report <sup>27</sup>   |
|  | Retreated cases                           | 0.47                       |  |
| Treatment default rate   | DS-TB on FL treatment                     | 0.20                       | WHO Global TB Report 2019 <sup>1</sup>   |
|  | DR-TB on SL treatment                     | 0.51                       |  |
|  | DR-TB on FL treatment                     | 0.25                       | Model assumption   |
| Treatment duration   | FL Treatment                              | 2                          | WHO treatment guideline, <sup>28</sup> corresponds to 6 months for standard FL regimen and 2 years for SL regimen  |
|  | SL treatment                              | 0.5                        |  |

|                                 |                       |      |  |
|---------------------------------|-----------------------|------|--|
| Treatment success rate          | DS-TB on FL treatment | 0.74 | For DS-TB on FL treatment this is a weighted average between new and retreated cases. WHO Global TB Report 2019 <sup>1</sup> . |
|                                 | DR-TB on SL treatment | 0.49 |  |
|                                 | DR-TB on FL treatment | 0.3  | Model assumption   |
| DR acquisition rate while on FL | [0 - 0.05]            |      | Model assumption   |
| <b>Demographics</b>             |                       |      |  |
| Birth rate                      | 0.01                  |      | WHO GHO data, <sup>15</sup> adjusted to yield 1% annual population growth from 1970  |
| Background mortality            | 0.015                 |      | WHO GHO data, <sup>15</sup> corresponds to mean life expectancy of 68 years  |

Abbreviations: CrI: credible interval, DR: drug-resistant (i.e. rifampicin-resistant), DS: drug-susceptible, DST: drug susceptibility test, ECDC: European Centre for Disease Prevention and Control, FL: first-line, GHO: Global Health Observatory, SL: second-line, TB: tuberculosis, WHO: World Health Organization

## References

- 1 World Health Organization. Global tuberculosis report 2019. Geneva, Switzerland, 2019.
- 2 Vesga JF, Hallett TB, Reid MJA, et al. Assessing tuberculosis control priorities in high-burden settings: a modelling approach. *Lancet Glob Health* 2019; **7**(5): e585-e95.
- 3 Satyanarayana S, Subbaraman R, Shete P, et al. Quality of tuberculosis care in India: a systematic review. *Int J Tuberc Lung Dis* 2015; **19**(7): 751-63.
- 4 Haario H, Saksman E, Tamminen J. An adaptive Metropolis algorithm. *Bernoulli* 2001; **7**(2): 223-42.
- 5 Enos M, Sitienei J, Ong'ang'o J, et al. Kenya tuberculosis prevalence survey 2016: Challenges and opportunities of ending TB in Kenya. *PloS one* 2018; **13**(12): e0209098.
- 6 Wood SN. Generalized Additive Models: An Introduction with R. Second ed. Boca Raton, Florida: Chapman and Hall/CRC; 2017.
- 7 Stop TB Partnership. The Global Plan to End TB 2018-2022. Geneva, Switzerland; 2019.
- 8 Ragonnet R, Trauer JM, Scott N, Meehan MT, Denholm JT, McBryde ES. Optimally capturing latency dynamics in models of tuberculosis transmission. *Epidemics* 2017; **21**: 39-47.
- 9 Driver CR, Munsiff SS, Li J, Kundamal N, Osahan SS. Relapse in persons treated for drug-susceptible tuberculosis in a population with high coinfection with human immunodeficiency virus in New York City. *Clin Infect Dis* 2001; **33**(10): 1762-9.
- 10 Thomas A, Gopi PG, Santha T, et al. Predictors of relapse among pulmonary tuberculosis patients treated in a DOTS programme in South India. *Int J Tuberc Lung Dis* 2005; **9**(5): 556-61.
- 11 Menzies D, Benedetti A, Paydar A, et al. Effect of duration and intermittency of rifampin on tuberculosis treatment outcomes: a systematic review and meta-analysis. *PLoS Med* 2009; **6**(9): e1000146.
- 12 Tiemersma EW, van der Werf MJ, Borgdorff MW, Williams BG, Nagelkerke NJ. Natural history of tuberculosis: duration and fatality of untreated pulmonary tuberculosis in HIV negative patients: a systematic review. *PloS one* 2011; **6**(4): e17601.
- 13 Subbaraman R, Nathavitharana RR, Satyanarayana S, et al. The Tuberculosis Cascade of Care in India's Public Sector: A Systematic Review and Meta-analysis. *PLoS Med* 2016; **13**(10): e1002149.
- 14 World Health Organization. WHO's global tuberculosis database.
- 15 World Health Organization. Global Health Observatory (GHO) data. Geneva, Switzerland.
- 16 Getahun H, Gunneberg C, Granich R, Nunn P. HIV infection-associated tuberculosis: the epidemiology and the response. *Clin Infect Dis* 2010; **50 Suppl 3**: S201-7.
- 17 Selwyn PA, Hartel D, Lewis VA, et al. A prospective-study of the risk of tuberculosis among intravenous drug-users with Human Immunodeficiency Virus-infection. *New Engl J Med* 1989; **320**(9): 545-50.
- 18 Tollefson D, Ngari F, Mwakala M, et al. Under-reporting of sputum smear-positive tuberculosis cases in Kenya. *Int J Tuberc Lung Dis* 2016; **20**(10): 1334-41.
- 19 Suthar AB, Lawn SD, del Amo J, et al. Antiretroviral therapy for prevention of tuberculosis in adults with HIV: a systematic review and meta-analysis. *PLoS Med* 2012; **9**(7): e1001270.
- 20 Rangaka MX, Wilkinson RJ, Boulle A, et al. Isoniazid plus antiretroviral therapy to prevent tuberculosis: a randomised double-blind, placebo-controlled trial. *Lancet* 2014; **384**(9944): 682-90.
- 21 World Health Organization. Latent tuberculosis infection: updated and consolidated guidelines for programmatic management. Geneva, Switzerland, 2018.
- 22 Olney JJ, Braitstein P, Eaton JW, et al. Evaluating strategies to improve HIV care outcomes in Kenya: a modelling study. *Lancet HIV* 2016; **3**(12): e592-e600.
- 23 Joint United Nations Programme on HIV/AIDS. UNAIDS Data 2017. Switzerland: Geneva; 2017.
- 24 Mangal TD, Unaid Working Group on CD4 Progression Mortality Amongst HIV-1 Seroconverters including the Cascade Collaboration in EuroCoord. Joint estimation of CD4+ cell progression and survival in untreated individuals with HIV-1 infection. *AIDS* 2017; **31**(8): 1073-82.
- 25 Vynnycky E, Fine PE. The natural history of tuberculosis: the implications of age-dependent risks of disease and the role of reinfection. *Epidemiol Infect* 1997; **119**(2): 183-201.
- 26 Horsburgh CR, Jr., O'Donnell M, Chamblee S, et al. Revisiting rates of reactivation tuberculosis: a population-based approach. *Am J Respir Crit Care Med* 2010; **182**(3): 420-5.
- 27 European Centre for Disease Prevention and Control. Tuberculosis surveillance and monitoring in Europe, 2018 - 2016 data. Stockholm, Sweden, 2018.
- 28 World Health Organization. Guidelines for treatment of tuberculosis. fourth ed. Geneva, Switzerland; 2010.