

Supplemental Information

SUPPLEMENTAL METHODS AND MATERIALS

Study Procedures and exclusion criteria

Patients were recruited through the Psychotic Disorders Program at the Vanderbilt Psychiatric Hospital. Healthy subjects were recruited from Nashville and surrounding area via advertisement and word-of-mouth. All subjects were provided written informed consent prior to participating.

Exclusion criteria included age less than 16 or greater than 65; estimated pre-morbid IQ less than 70; presence of a medical illness or central nervous system disorder (e.g., multiple sclerosis, epilepsy) that would affect study results; reported pregnancy or lactation; history of significant head trauma; psychotropic drug use (healthy subjects only); substance abuse within last one month (patients) or lifetime history of substance abuse/dependence (healthy subjects); first degree relative with a psychotic illness (healthy subjects only); and MRI contra-indicators (e.g. metal implants, claustrophobia).

MRI Data Acquisition and Pre-processing

During resting state fMRI scan, participants were instructed to rest quietly with their eyes closed and to remain awake. The resting-state scan was acquired immediately after the survey and high-resolution structural scan, and was not preceded by a cognitive task.

The fMRI and T1-weighted images were pre-processed using the toolbox SPM (<https://www.fil.ion.ucl.ac.uk/spm/>). First, the fMRI images were corrected for slice timing and head motion. Twenty-four motion parameters (1) and mean cerebral-spinal-fluid (CSF) signal were regressed out. The resulting rsfMRI data were filtered with passband of 0.01Hz to 0.1Hz, co-registered to the MNI space, and detrended (max order=2). Then the time-course of each voxel was normalized into a new one with zero mean and unit variance. On the other hand, three brain tissues white matter (WM), gray matter (GM) and CSF were segmented on the T1-weighted images. Then the three tissue probability maps were normalized to a common space using DARTEL method (2) for further usage.

Table S1. P-values of t-test on FC comparison in WM between CON and SCZ groups.

	Resting State			Working Memory I			Working Memory II		
	CON (mean±std)	SCZ (mean±std)	<i>p</i> (<i>t</i> -test)	CON (mean±std)	SCZ (mean±std)	<i>p</i> (<i>t</i> -test)	CON (mean±std)	SCZ (mean±std)	<i>p</i> (<i>t</i> -test)
CST. <i>l</i>	.29±.13	.27±.12	.298	.30±.12	.29±.13	.575	.31±.12	.29±.12	.424
ML. <i>l</i>	.12±.11	.12±.11	.993	.14±.12	.14±.12	.999	.14±.10	.14±.12	.852
ICBP. <i>l</i>	.18±.13	.16±.12	.341	.20±.13	.17±.11	.112	.20±.11	.18±.10	.135
SCBP. <i>l</i>	.15±.12	.15±.11	.896	.17±.12	.16±.11	.626	.17±.12	.16±.10	.522
CP. <i>l</i>	.23±.12	.23±.12	.859	.26±.12	.25±.12	.495	.27±.12	.25±.11	.437
ALIC. <i>l</i>	.35±.14	.31±.13	.127	.38±.12	.35±.13	.205	.39±.11	.36±.12	.138
PLIC. <i>l</i>	.31±.14	.28±.11	.175	.32±.10	.31±.11	.314	.34±.10	.31±.10	.078
RLIC. <i>l</i>	.26±.13	.25±.11	.622	.30±.11	.28±.10	.532	.31±.10	.29±.10	.132
ACR. <i>l</i>	.19±.11	.17±.09	.138	.19±.09	.19±.09	.953	.20±.08	.19±.09	.332
SCR. <i>l</i>	.19±.10	.19±.10	.966	.22±.08	.23±.09	.252	.22±.08	.23±.09	.682
PCR. <i>l</i>	.14±.12	.16±.11	.350	.16±.10	.19±.10	.077	.17±.09	.18±.09	.290
PTR. <i>l</i>	.10±.11	.14±.10	.031*	.13±.10	.15±.11	.159	.14±.11	.15±.11	.433
SS. <i>l</i>	.15±.11	.15±.10	.772	.15±.11	.18±.09	.154	.17±.10	.18±.08	.487
EC. <i>l</i>	.39±.14	.32±.12	<.001**	.40±.11	.34±.12	.006**	.41±.10	.35±.11	<.001**
CGG. <i>l</i>	.38±.15	.33±.12	.017*	.39±.13	.34±.11	.013*	.40±.12	.34±.11	.007**
CGH. <i>l</i>	.26±.14	.23±.11	.285	.27±.11	.25±.12	.222	.27±.11	.24±.11	.091
FXC. <i>l</i>	.15±.13	.18±.11	.123	.19±.12	.21±.09	.356	.20±.11	.21±.09	.637
SLF. <i>l</i>	.24±.12	.22±.10	.272	.27±.09	.26±.09	.870	.27±.09	.26±.09	.362
SFO. <i>l</i>	.18±.12	.17±.12	.709	.21±.11	.22±.11	.841	.22±.10	.22±.10	.989
UF. <i>l</i>	.22±.13	.16±.09	.006**	.21±.10	.17±.11	.017*	.22±.09	.18±.10	.007**
MCBP	.31±.13	.29±.11	.363	.34±.13	.32±.11	.240	.35±.12	.32±.10	.181
PCT	.27±.14	.24±.11	.087	.28±.12	.26±.12	.425	.29±.12	.26±.12	.242
GCC	.29±.13	.24±.12	.008**	.29±.11	.25±.11	.046*	.29±.10	.25±.10	.017*
BCC	.24±.15	.18±.12	.006**	.25±.13	.20±.12	.014*	.25±.12	.21±.11	.014*
SCC	.21±.12	.21±.10	.856	.22±.11	.24±.11	.243	.24±.10	.23±.10	.919
FX	.28±.12	.28±.13	.828	.27±.11	.28±.13	.515	.28±.10	.28±.12	.926
UF. <i>r</i>	.21±.10	.16±.10	.003**	.20±.10	.17±.09	.070	.21±.09	.17±.09	.011*
SFO. <i>r</i>	.18±.10	.18±.10	.678	.20±.10	.21±.11	.815	.21±.09	.21±.11	.859
SLF. <i>r</i>	.26±.12	.23±.09	.113	.27±.10	.26±.09	.464	.28±.09	.26±.09	.209
FXC. <i>r</i>	.13±.11	.13±.10	.966	.19±.11	.14±.11	.009**	.19±.10	.14±.10	.006**
CGH. <i>r</i>	.29±.14	.27±.12	.171	.31±.11	.27±.11	.013*	.32±.11	.27±.10	.005**
CGG. <i>r</i>	.38±.14	.32±.11	.013*	.38±.12	.34±.11	.020*	.40±.11	.35±.10	.007**
EC. <i>r</i>	.38±.13	.32±.12	<.001**	.39±.11	.34±.12	.017*	.39±.11	.34±.11	.006**
SS. <i>r</i>	.20±.11	.19±.11	.539	.21±.11	.19±.10	.301	.22±.10	.20±.10	.304
PTR. <i>r</i>	.18±.11	.19±.11	.681	.18±.10	.20±.10	.330	.19±.09	.20±.10	.678
PCR. <i>r</i>	.14±.11	.15±.10	.470	.14±.10	.18±.11	.026*	.15±.09	.18±.10	.099
SCR. <i>r</i>	.17±.10	.17±.10	.985	.19±.09	.20±.09	.538	.19±.08	.20±.09	.814
ACR. <i>r</i>	.18±.10	.17±.10	.898	.19±.09	.20±.09	.478	.19±.08	.20±.09	.639
RLIC. <i>r</i>	.27±.12	.25±.12	.356	.28±.12	.27±.10	.461	.30±.11	.28±.10	.235
PLIC. <i>r</i>	.27±.13	.25±.12	.270	.28±.11	.27±.12	.595	.30±.11	.27±.11	.137
ALIC. <i>r</i>	.32±.13	.28±.13	.069	.36±.12	.32±.13	.093	.37±.11	.33±.12	.045*
CP. <i>r</i>	.22±.11	.22±.12	.873	.26±.11	.23±.11	.079	.27±.11	.23±.10	.029*
SCBP. <i>r</i>	.19±.12	.17±.10	.284	.21±.12	.18±.12	.149	.21±.11	.18±.11	.123
ICBP. <i>r</i>	.20±.12	.18±.11	.312	.23±.12	.21±.10	.218	.23±.11	.20±.09	.108
ML. <i>r</i>	.16±.12	.14±.11	.373	.18±.11	.16±.11	.445	.18±.11	.16±.11	.364
CST. <i>r</i>	.31±.14	.27±.12	.070	.32±.12	.29±.13	.163	.32±.12	.29±.12	.118

Note: * Indicates $p < .05$ and ** indicates $p < .01$

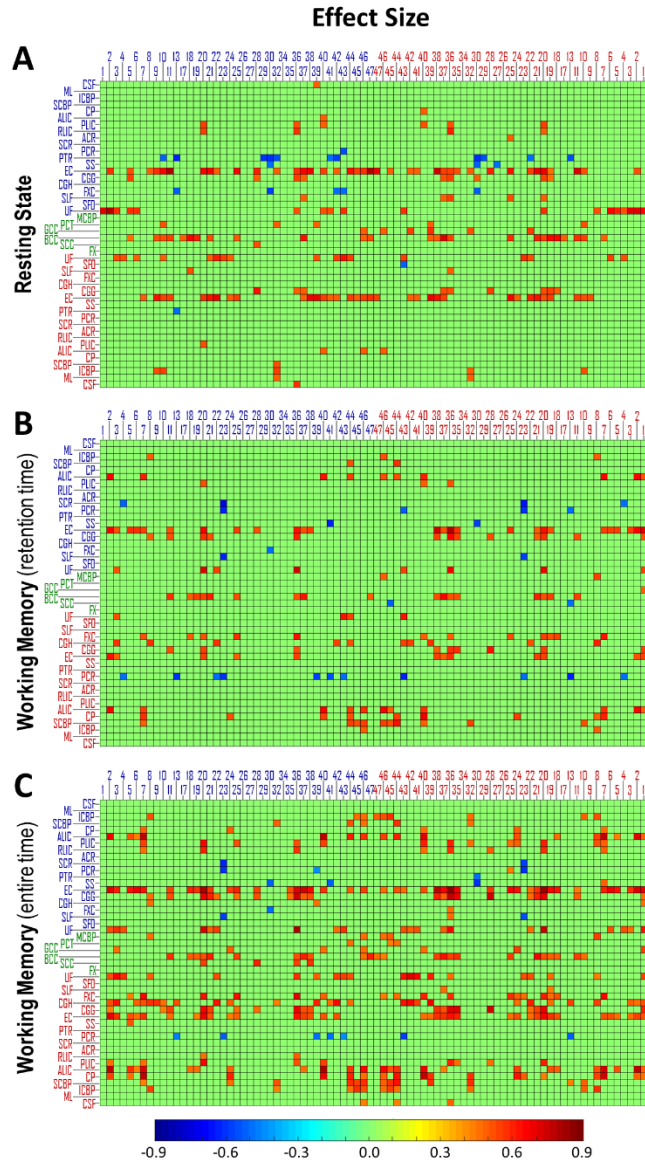


Figure S1. Effect size of FC difference in three scenarios. **(A-C)** Effect size of FC difference between CON and SCZ groups in three scenarios: **(A)** resting state, **(B)** working memory I and **(C)** working memory II. The effect sizes with $p_{FDR} > .05$ were set to zero. The blue/red indices labeling each column indicate number of Brodmann areas in left/right hemispheres. The blue/green/red abbreviations labeling each row indicate WM tracts in left/middle/right of brain. See Table 2 for lists of these ROIs.

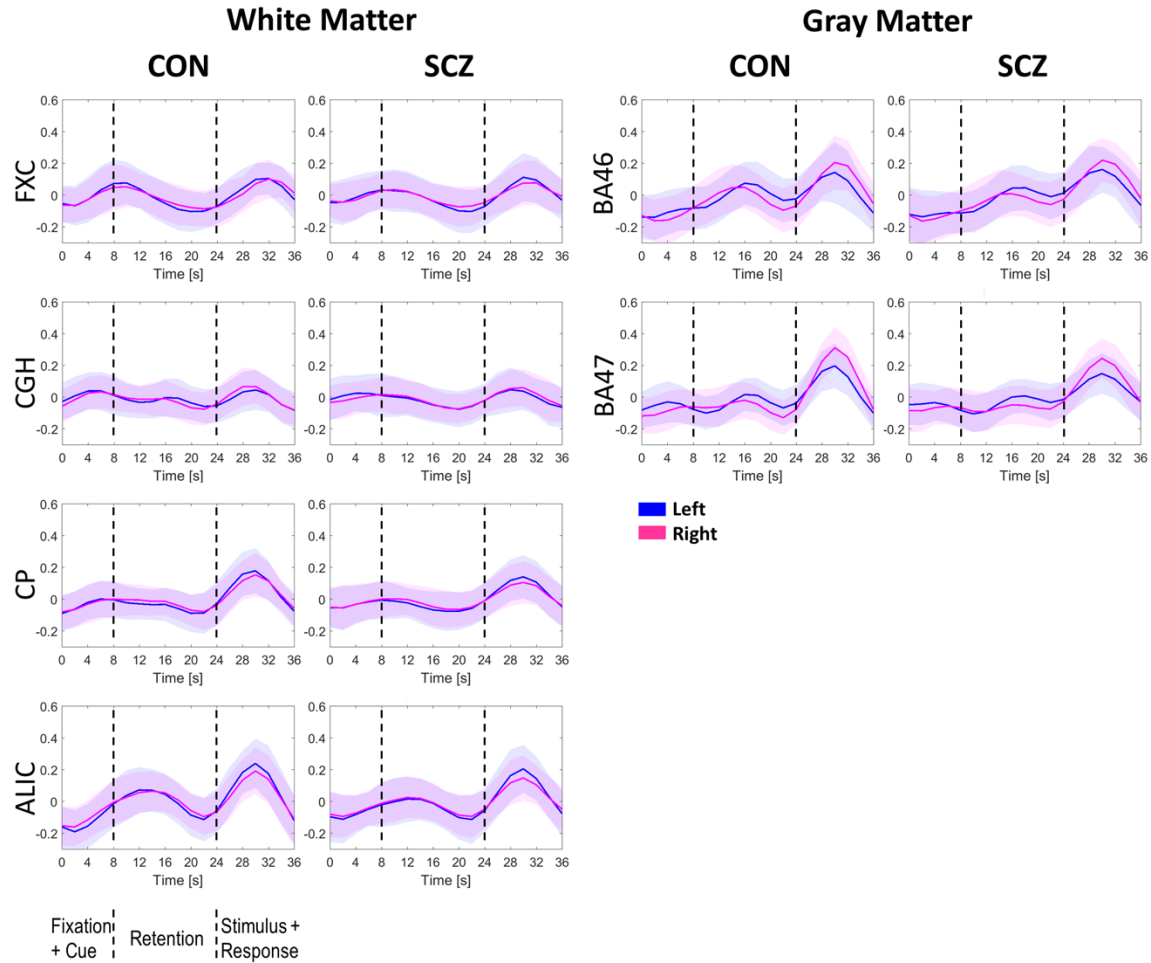


Figure S2. Average time-courses of a number of WM and GM ROIs in working memory scenarios. One working memory trial has 19 dynamics (duration=38s), in which 8 dynamics (duration=16s) between the two dotted vertical lines are retention time.

1. Friston KJ, Williams S, Howard R, Frackowiak RS, Turner R (1996): Movement-related effects in fMRI time-series. *Magn Reson Med.* 35:346-355.
2. Ashburner J (2007): A fast diffeomorphic image registration algorithm. *NeuroImage.* 38:95-113.