

## **SUPPLEMENTARY DATA**

### **Modelling the evolution of COVID-19 in high-incidence European countries and regions: estimated number of infections and impact of past and future intervention measures**

Juan Fernández-Recio

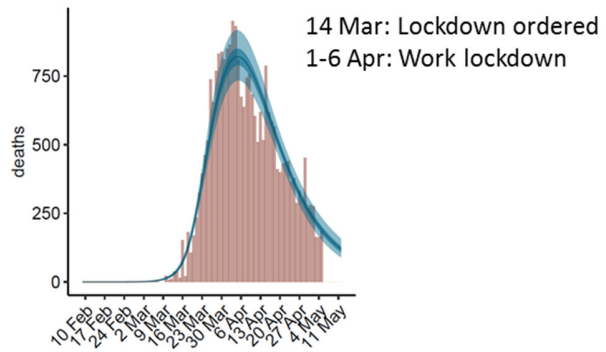
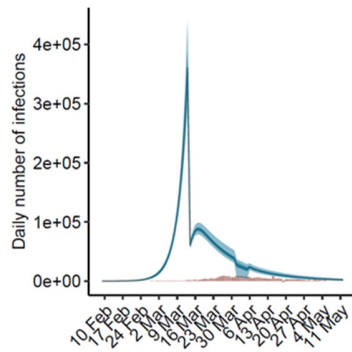
Instituto de Ciencias de la Vid y del Vino (ICVV), CSIC - Universidad de La Rioja  
- Gobierno de La Rioja, Ctra. Burgos Km. 6, 26007 Logroño, Spain.

Correspondence to: Juan Fernández-Recio (juan.fernandezrecio@icvv.es). Tel: +34 941894980. Fax: +34 941899728

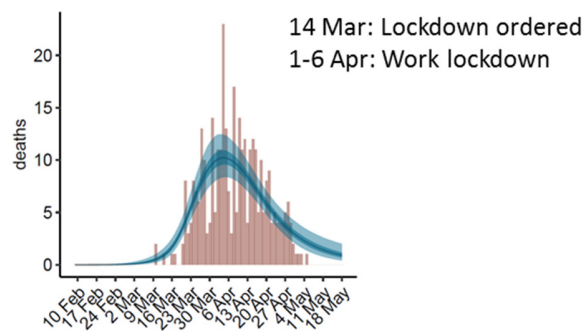
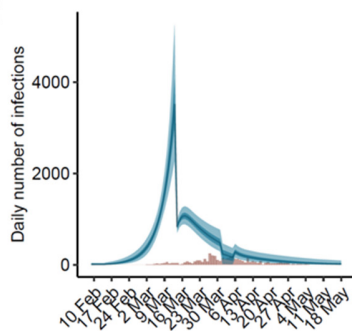
**Supplemental Table 1.** Parameters (reproduction number and initial infections) obtained by using additional interventions in the modeling

<b>Country / region</b>	<b>Mean <math>R_0</math> [95% credible interval]</b>	<b>Interventions</b>	<b>Mean <math>R_t</math> after intervention [95% credible interval]</b>	<b>Estimated infections in first 6 days [95% credible interval]</b>
Spain	4.80 [4.15-5.51]	14 Mar 1-6 Apr	0.61 [0.53-0.70] 0.46 [0.10-0.62]	401 [154-852]
La Rioja	3.22 [2.38-4.37]	14 Mar 1-6 Apr	0.63 [0.47-0.80] 0.33 [0.02-0.62]	78 [9-249]
Iceland	1.82 [1.31-2.38]	24 Mar 3 Apr	0.34 [0.02-1.05] 0.20 [0.01-0.61]	78 [25-171]

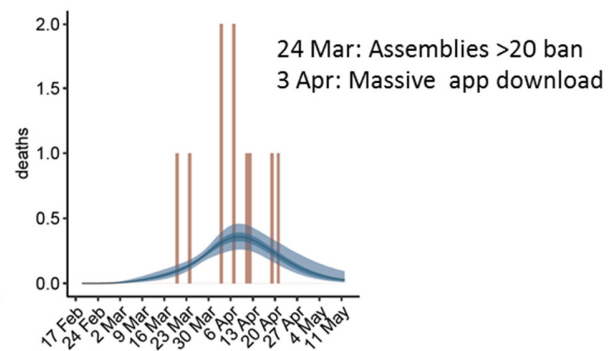
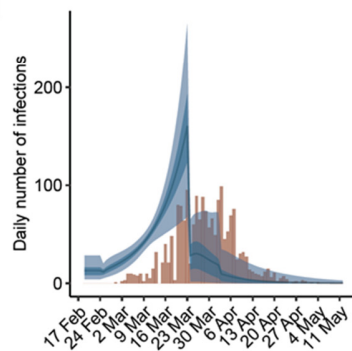
## Spain



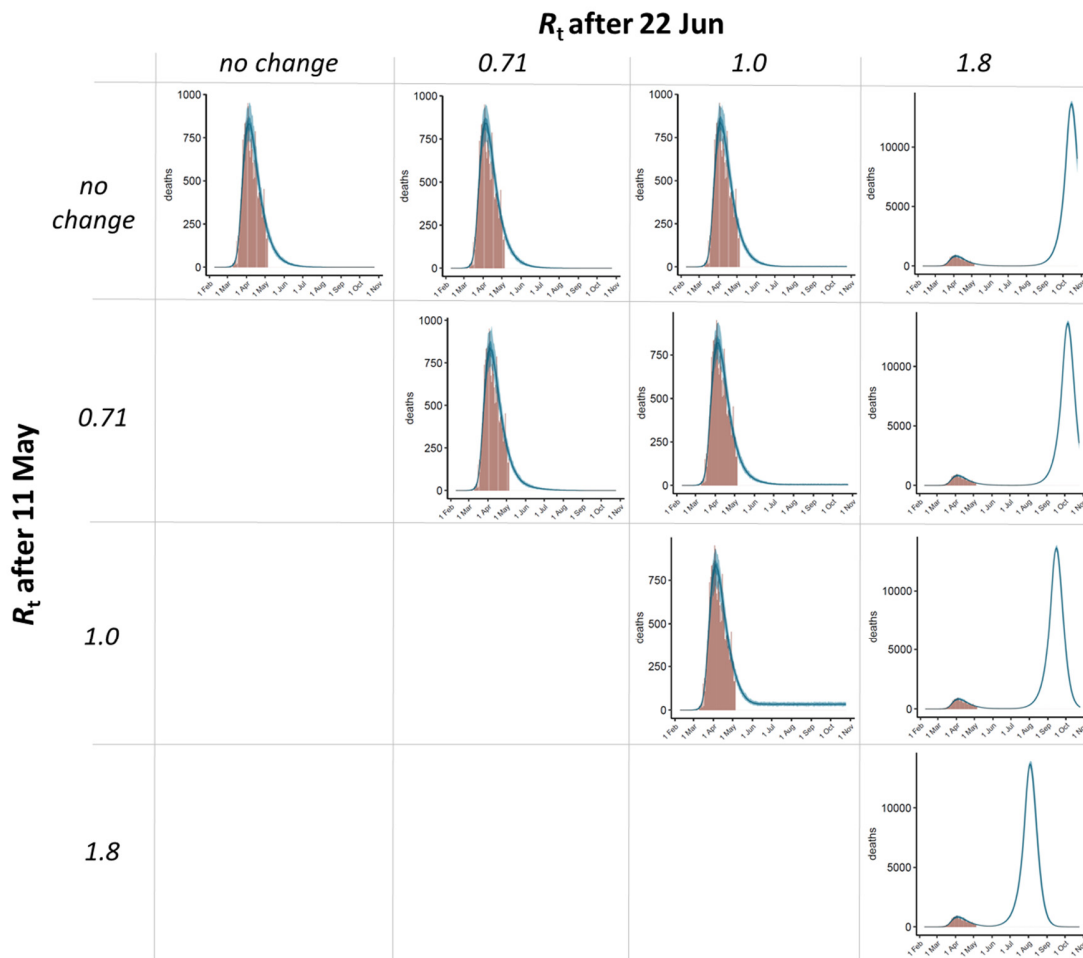
## La Rioja



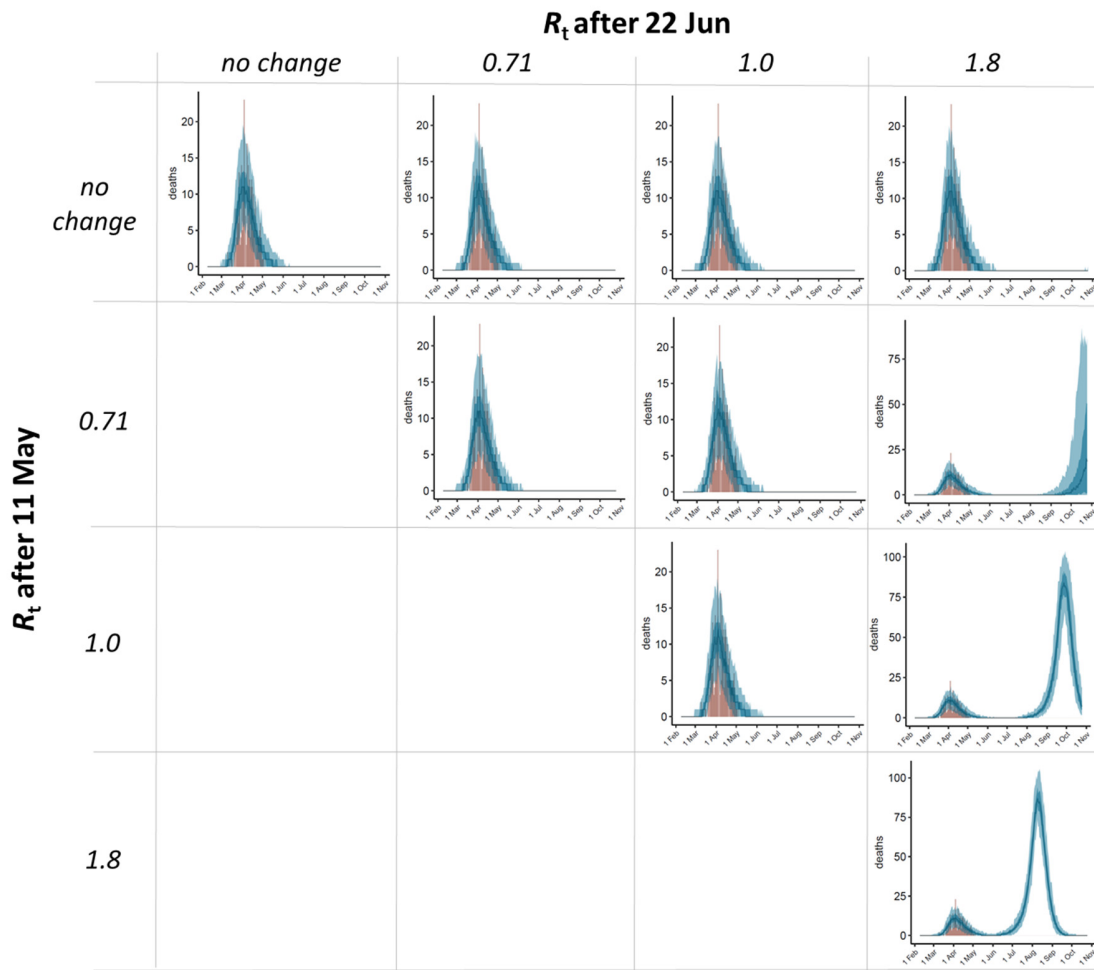
## Iceland



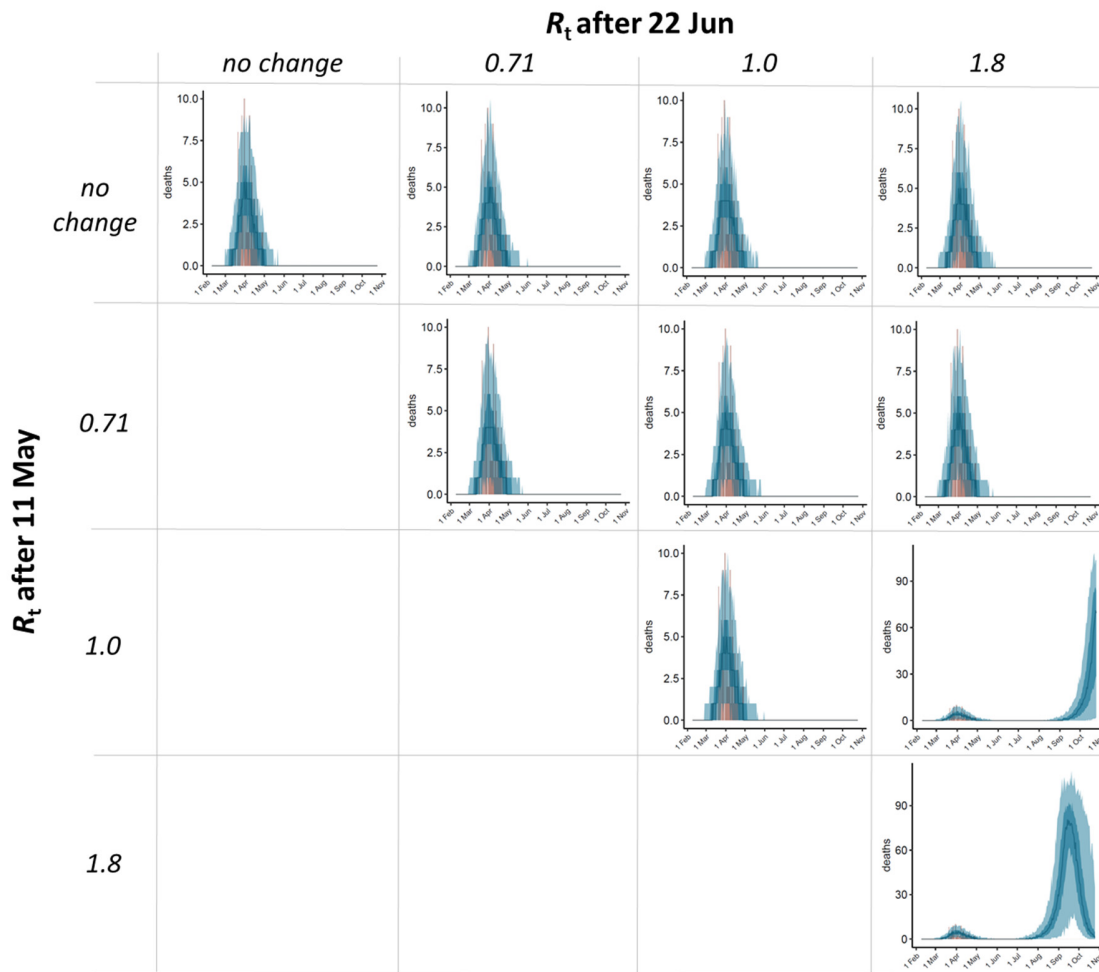
**Supplemental Figure 1.** Estimates of infections and deaths obtained by including additional interventions dates in the model (Table S1).



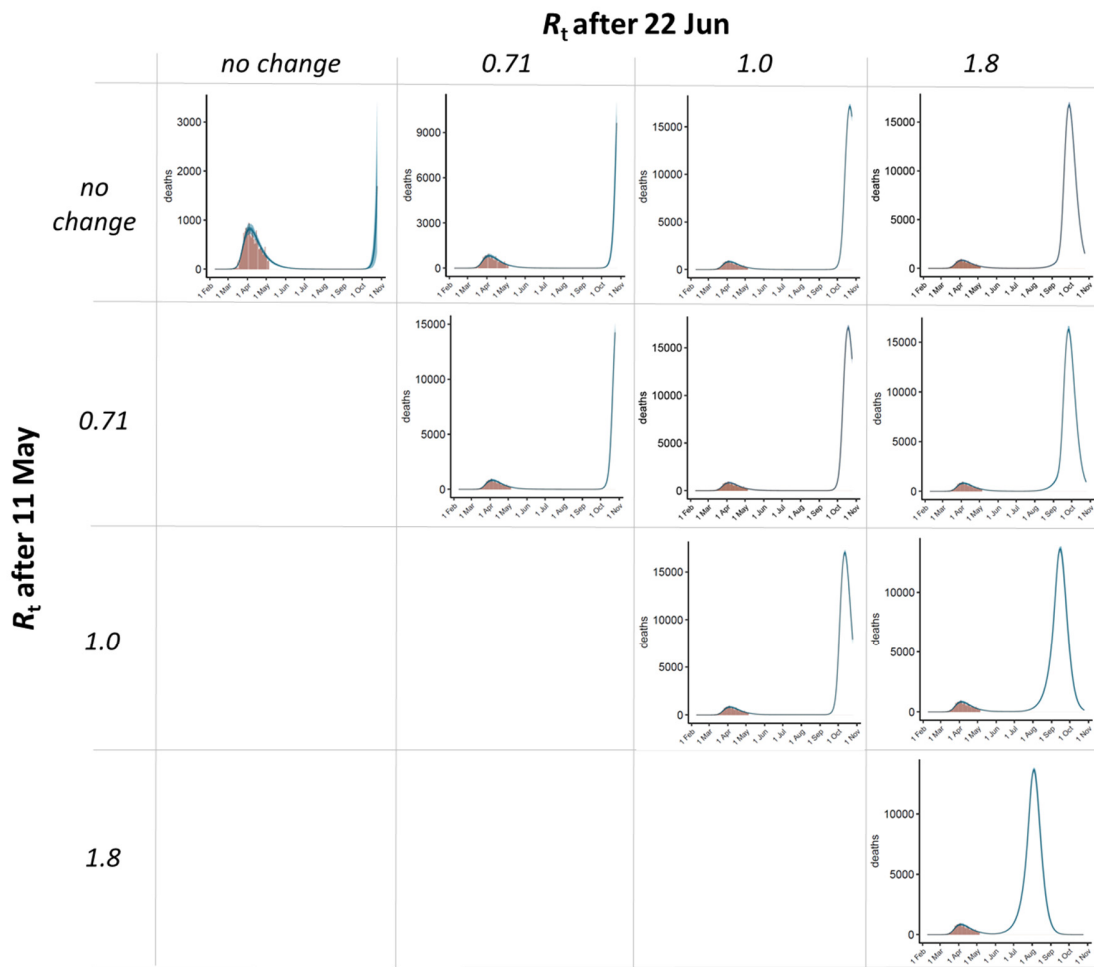
**Supplemental Figure 2.** Blue bands (light blue 95% CI; dark blue 50% CI) represent the estimated daily deaths over time in Spain, computed as 100 discrete random distributions from sets of parameters obtained by the model ( $R_0$ ,  $R_t$  after main intervention, and initial number of infections; Table 3), for different scenarios depending on possible changes in  $R_t$  after the proposed modifications in the intervention measures in two key dates (11 May and 22 June). Reported deaths to date are represented as brown bars.



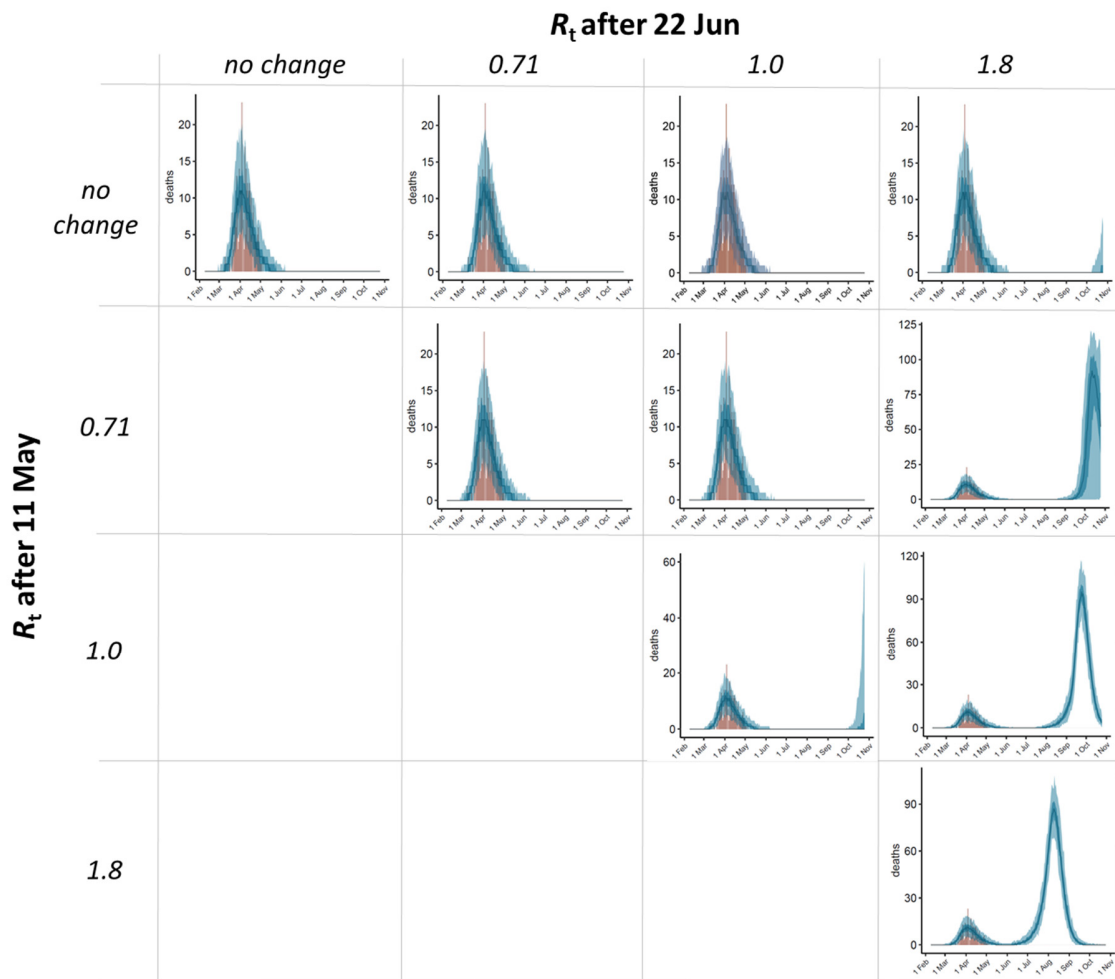
**Supplemental Figure 3.** Blue bands (light blue 95% CI; dark blue 50% CI) represent the estimated daily deaths over time in La Rioja, computed as 100 discrete random distributions from sets of parameters obtained by the model ( $R_0$ ,  $R_t$  after main intervention, and initial number of infections; Table 3), for different scenarios depending on possible changes in  $R_t$  after the proposed modifications in the intervention measures in two key dates (11 May and 22 June). Reported deaths to date are represented as brown bars.



**Supplemental Figure 4.** Blue bands (light blue 95% CI; dark blue 50% CI) represent the estimated daily deaths over time in La Rioja (after excluding data from elderly retirement homes with reported cases), computed as 100 discrete random distributions from sets of parameters obtained by the model ( $R_0$ ,  $R_t$  after main intervention, and initial number of infections; Table 3), for different scenarios depending on possible changes in  $R_t$  after the proposed modifications in the intervention measures in two key dates (11 May and 22 June). Reported deaths to date are represented as brown bars.

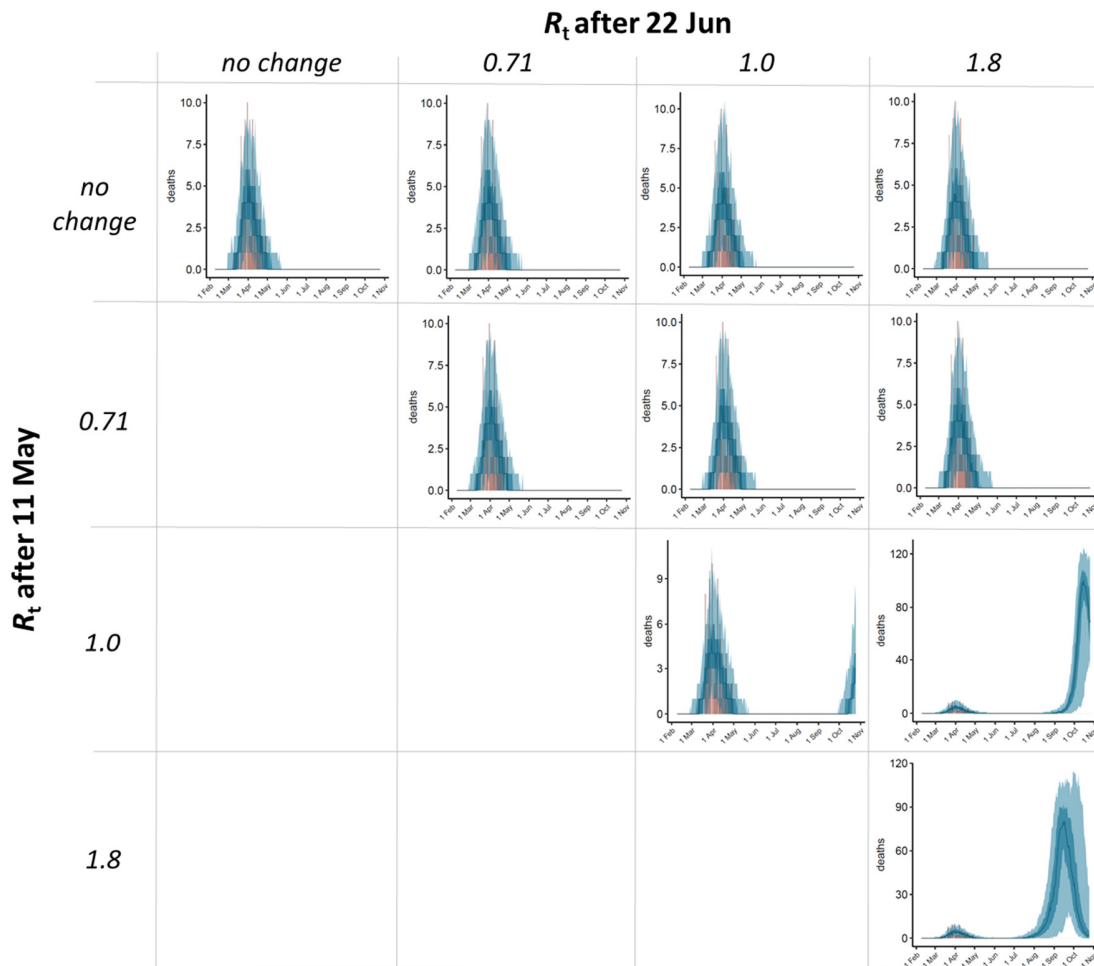


**Supplemental Figure 5.** Blue bands (light blue 95% CI; dark blue 50% CI) represent the estimated daily deaths over time in Spain, computed as 100 discrete random distributions from sets of parameters obtained by the model ( $R_0$ ,  $R_t$  after main intervention, and initial number of infections; Table 3), for different scenarios depending on possible changes in  $R_t$  after the proposed modifications in the intervention measures in two key dates (11 May and 22 June), considering return to total normality on 1 September 2020. Reported deaths to date are represented as brown bars.



**Supplemental Figure 6.** Blue bands (light blue 95% CI; dark blue 50% CI) represent the estimated daily deaths over time in La Rioja, computed as 100 discrete random distributions from sets of parameters obtained by the model ( $R_0$ ,  $R_t$  after main intervention, and initial number of infections; Table 3), for different scenarios depending on possible changes in  $R_t$  after the proposed modifications in the intervention measures in two key dates (11 May and 22 June), considering return to total normality on 1 September 2020. Reported deaths to date are represented as brown bars.





**Supplemental Figure 7.** Blue bands (light blue 95% CI; dark blue 50% CI) represent the estimated daily deaths over time in La Rioja (after excluding data from elderly retirement homes with reported cases), computed as 100 discrete random distributions from sets of parameters obtained by the model ( $R_0$ ,  $R_t$  after main intervention, and initial number of infections; Table 3), for different scenarios depending on possible changes in  $R_t$  after the proposed modifications in the intervention measures in two key dates (11 May and 22 June), considering return to total normality on 1 September 2020. Reported deaths to date are represented as brown bars.