

Suicide risk with selective serotonin reuptake inhibitors and new-generation serotonergic-noradrenergic antidepressants in adults: a systematic review and meta-analysis of observational studies

Hengartner MP, Amendola S, Kaminski JA, Kindler S, Bschor T, Plöderl M

Supplementary Material

Content

1. Search strategy page 2.
2. Pubmed search term page 4.
3. Quality (risk of bias) assessment scale page 5.
4. Qualitative synthesis of unique medical conditions page 6.
5. Characteristics of studies included in the meta-analysis page 7.
6. Quality ratings of studies included in the meta-analysis page 11.
7. Assessment of publication bias page 13.
8. Funnel plots for main results page 14.
9. Sensitivity analysis without outlier effects page 17.
10. Forest plots for fCOI subgroups page 19.
11. References page 26.

1. Search strategy

Searching databases: Medline, PsycINFO, Web of Science, PsycARTICLES and SCOPUS.

In: text, abstract, keywords.

1. antidepressants
2. antidepressant agents second generation
3. selective serotonin reuptake inhibitor
4. serotonin norepinephrine reuptake inhibitor
5. #1 OR #2 OR #3 OR #4
6. citalopram
7. escitalopram
8. fluoxetine
9. fluvoxamine
10. paroxetine
11. sertraline
12. desvenlafaxine
13. duloxetine
14. levomilnacipran
15. milnacipran
16. venlafaxine
17. vilazodone
18. vortioxetine
19. nefazodone
20. trazodone
21. reboxetine
22. bupropion
23. mianserin
24. mirtazapine
25. agomelatine

26. #6 OR #7 OR #8 OR #9 OR #10 OR #11 OR #12 OR #13 OR #14 OR #15 OR #16 OR #17
OR #18 OR #19 OR #20 OR #21 OR #22 OR #23 OR #24 OR #25

27. suicide

28. suicide attempted

29. self-harm

30. #27 OR #28 OR #29

31. #5 OR #26

32. #30 AND #31

Limits: age = **18 and older**; language = **english**; publication year = **1990-2020**

2. Pubmed search term

((("antidepressants"[Title/Abstract] OR "antidepressive agents second generation"[Title/Abstract])
OR "selective serotonin reuptake inhibitors"[Title/Abstract]) OR "serotonin norepinephrine reuptake
inhibitors"[Title/Abstract]) OR (((((((((((((((("citalopram"[Title/Abstract]) OR
"escitalopram"[Title/Abstract]) OR "fluoxetine"[Title/Abstract]) OR "fluvoxamine"[Title/Abstract])
OR "paroxetine"[Title/Abstract]) OR "sertraline"[Title/Abstract]) OR
"desvenlafaxine"[Title/Abstract]) OR "duloxetine"[Title/Abstract]) OR
"levomilnacipran"[Title/Abstract]) OR "milnacipran"[Title/Abstract]) OR
"venlafaxine"[Title/Abstract]) OR "vilazodone"[Title/Abstract]) OR "vortioxetine"[Title/Abstract])
OR "nefazodone"[Title/Abstract]) OR "trazodone"[Title/Abstract]) OR "reboxetine"[Title/Abstract])
OR "bupropion"[Title/Abstract]) OR "mianserin"[Title/Abstract]) OR "mirtazapine"[Title/Abstract])
OR "agomelatine"[Title/Abstract])) AND (("suicide"[Title/Abstract] OR "suicide
attempted"[Title/Abstract]) OR "self-harm"[Title/Abstract])

3. Quality (risk of bias) assessment scale

The following scale was adapted from the literature^{1 2} and was also applied in the previous meta-analysis by Barbui et al.³

Domains	Categories	Scoring
Population framework	Defined geographic area	2
	Hospital / Insurance database	1
	Convenience sample	0
Study design	Cohort	2
	Case-control	1
Demographic data	Complete description	1
	Inadequate description	0
Clinical data	Complete description	1
	Partial description	0
Outcome data	Complete description	2
	Partial description	1
	Inadequate description	0
Covariate adjustment	>3 variables	2
	1-3 variables	1
	None	0

4. Qualitative synthesis of unique medical conditions

Haukka et al.⁴ conducted a register-based cohort study in patients with schizophrenia in Finland (n=1611; mean age: 38; 51% men). In this cohort there was no clear association between exposure to any antidepressant and suicides (RE=0.97, 0.58-1.61). With respect to suicide attempt, the risk was slightly increased in the group exposed to antidepressants (RE=1.25, 1.06-1.47). By contrast, Tiihonen et al.,⁵ based on a largely overlapping sample derived from the same Finnish healthcare registries (n=2588; mean age: 38; 62% men), reported a considerably reduced suicide risk with any antidepressant (RE=0.15, 0.03-0.77). Reutfors et al.⁶ also focused on suicides in patients with schizophrenia. In this case-control study based on healthcare registries from Sweden (n=168; mean age: 30; 57% men), there was no clear association between exposure to SSRI and suicide (RE=0.68, 0.23-2.0). In a case-control study based on Korean healthcare registries (n=296; mean age: 40; 78% men), Park et al.⁷ found an increased risk of suicide for patients with epilepsy exposed to any antidepressant (RE=7.2, 1.5-34.1). Finally, in a cohort study from the USA based on the Veterans Affairs database (n=294,952; mean age: 80; 97% men), Seyfried et al.⁸ reported an increased risk of suicide in patients with dementia exposed to any antidepressant (RE=2.11, 1.57-2.84).

5. Characteristics of studies included in the meta-analysis

Reference (country)	Study design	Population framework (sample size)	Age range (mean)	Males	Indication and exposure description	Adjustment or matching variables	Outcome definition	Ascertainment of exposure	Financial conflicts of interest	Quality score
Bilen 2011 (Sweden) ⁹	Cohort	Stockholm emergency department register and Swedish healthcare registers (n=1524)	18-92 (40)	35%	Emergency department visit due to deliberate self-harm Any AD vs. unexposed	>3	Suicide attempt according to ICD-10, including suicide	Prescription registry	No	7
Bjorkenstam 2013 (Sweden) ¹⁰	Cohort	Swedish Causes of Death Register (n=5913)	13+ (50)	71%	Any indication SSRI vs. unexposed	>3	Suicide according to ICD-10	Prescription registry	No	9
Carlsten 2009 (Sweden) ¹¹	Case-control	Gothenburg Institute of Forensic Medicine (cases), Tax Register (controls) (n=238)	65+ (75)	55%	Any indication SSRI, any AD vs. unexposed	>3	Suicide death according to coroner's report	Post-mortem forensic analysis (cases), psychiatric interview (controls)	No	8
Castelpietra 2017 (Italy) ¹²	Case-control	Social and Health Information System of the Friuli Venezia Giulia region (n=5256)	?	65%	Any indication SSRI, SNA, TCA, other AD vs. unexposed	>3	Suicide according to ICD-9	Prescription registry	Yes	8
Chartrand 2012 (USA) ¹³	Cohort	National Epidemiologic Survey on Alcohol and Related Conditions (n=2864)	18+ (40)	33%	Depression Any AD vs. unexposed	>3	Suicide attempt according to structured interview	Structured interview	No	7
Cheung 2015 (Netherlands) ¹⁴	Cohort	Integrated Primary Care Information database (n=27,712)	10+ (50)	39%	Any indication and depression SSRI, SNA, TCA vs. unexposed (AD discontinued)	>3	Suicide attempt according to ICD-9/10, including suicide	Medical records	No	9
Coupland 2011	Cohort	UK General Practices	65-100	33%	Depression	>3	Suicide attempt	Primary care medical	No	9

(UK) ¹⁵		database (n=60,746)	(75)		SSRI, SNA, TCA vs. unexposed		according to ICD-9/10	records		
Coupland 2015* (UK) ¹⁶	Cohort	UK General Practices database (n=238,963)	20-64 (40)	39%	Depression SSRI, SNA, TCA vs. unexposed	>3	Suicide and suicide attempt according to ICD-9/10	Primary care medical records	No	9
Didham 2005 (New Zealand) ¹⁷	Case-control	Dunedin General Practitioners Research Unit database and New Zealand health record databases (n=57,361)	10-102 (46)	32%	Any indication SSRI, TCA vs. unexposed	1-3	Suicide and suicide attempt according to ICD-9	Computerized clinical records	No	6
Eikelenboom 2019 (Netherlands) ¹⁸	Cohort	Netherlands Study of Depression and Anxiety (n=1713)	18-65 (42)	31%	Depression Any AD vs. unexposed	>3	Suicide attempt according to structured interview	Inspection of medication boxes	No	9
Erlangsen 2009 (Denmark) ¹⁹	Cohort	Danish Register of Medicinal Product Statistics (n=217,123)	50+ (?)	36%	Any indication Any AD vs. unexposed (AD discontinued)	>3	Suicide according to ICD-9	Pharmacy prescription registry	No	9
Gibbons 2007 (USA) ²⁰	Cohort	Veterans Health Administration database (n=226,866)	18+ (57)	92%	Depression SSRI, SNA, TCA vs. unexposed	0	Suicide attempt according to ICD-9, including suicide or self-inflicted injury	Prescription registry	Yes	6
Leon 1999 (USA) ²¹	Cohort	National Institute of Mental Health Collaborative Depression Study (n=643)	17+ (38)	36%	Any affective disorder Fluoxetine vs. unexposed (AD discontinued)	>3	Suicide attempt according to psychiatric interview and medical records, including suicide	Structured interview and medical records	Yes	7
Martinez 2005 (UK) ²²	Case-control	UK General Practices database (n=37,652)	10-89 (40)	80% (Sui); 43% (SA)	Depression Any AD vs. unexposed (AD discontinued)	>3	Suicide and suicide attempt according to ICD-9/10	Primary care medical records	No	7

Olfson 2006 (USA) ²³	Case-control	Medicaid administrative database (n=3397)	19-64 (37)	26% (Sui); 59% (SA)	Depression SSRI, SNA, TCA vs. unexposed	>3	Suicide attempt according to ICD 9, suicide according to ICD 10	Prescription registry	Yes	8
Olfson 2008 (USA) ²⁴	Case-control	Medicaid administrative database (n=1078)	19-64 (32)	32%	Depression SSRI, other AD vs. unexposed	>3	Suicide attempt according to ICD-9	Prescription registry	Yes	8
Olmer 2012# (Israel) ²⁵	Case-control	Beer Yaakov mental health centre (n=206)	22-84 (49)	67%	Depression SSRI, SNA, TCA vs. unexposed	>3	Suicide attempt according to clinical evaluation	Medical charts	No	7
Rahman 2014 (Sweden) ²⁶	Cohort	Swedish healthcare registers (n=46,745)	18-64 (50)	34%	Disability pension due to common mental disorder Any AD vs. unexposed	>3	Suicide and suicide attempt according to ICD-10	Prescription registry	No	8
Rahme 2008 (Canada) ²⁷	Cohort	Quebec Health Care Fund administrative database (n=128,229)	65+ (75)	30%	Any indication and depression SSRI, other AD vs. unexposed (AD discontinued)	0	Suicide death according to coroner's report (ICD-9/10)	Prescription registry	Yes	8
Raja 2009# (Italy) ²⁸	Case-control	Italian psychiatric intensive care unit (n=1362)	18+ (43)	52%	Admission to psychiatric intensive care unit Any AD vs. unexposed	0	Suicide attempt according to clinical evaluation	Medical charts and interviews	No	5
Sondergard 2007 (Denmark) ²⁹	Cohort	Danish Medicinal Product Statistics and health registries (n=31,422)	18-101 (56)	33%	Depression SSRI, SNA, TCA vs. unexposed	1-3	Suicide death according to ICD-10	Prescription registry	Yes	9
Spittal 2019 (Australia) ³⁰	Case-control	Queensland Corrective Services and Australian Institute of Health and Welfare databases (n=572)	18+ (30)	17%	Any indication Any AD vs. unexposed	>3	Suicide according to ICD-9/10	Detention and case-management records	No	5

Swanson 2015 (USA) ³¹	Cohort	Medicaid administrative database (n=28,493)	12-55 (25)	0%	Depression Any AD vs. unexposed (AD discontinued)	>3	Suicide attempt according to ICD-9	Prescription registry	No	8
Termorshuizen 2016 (Netherlands) ³²	Cohort	Achmea Health Insurance Database and registers of Statistics Netherlands (n=232,561)	? (49)	36%	Any indication Any AD vs. unexposed (AD discontinued)	0	Suicide and suicide attempt according to DSM-10	Prescription registry	No	4
Tiihonen 2006 (Finland) ³³	Cohort	Finnish National Hospital Discharge register (n=15,390)	10-100 (39)	49%	Hospitalized with diagnosis of suicide attempt SSRI, SNA, TCA vs. unexposed	>3	Suicide and suicide attempt according to ICD-10	Outpatient pharmacy prescription registry	Yes	9
Valuck 2016 (USA) ³⁴	Cohort	IMS Health Life-Link database (n=52,355, excluding general population sample)	19-98 (42)	33%	Depression SSRI, SNA, TCA vs. unexposed	>3	Suicide and suicide attempt according to ICD-9	Prescription registry	Yes	8
Wang 2015 (Sweden) ³⁵	Cohort	Swedish healthcare registers (n=21,096)	16-64 (37)	40%	Depression Any AD vs. unexposed	>3	Suicide and suicide attempt according to ICD-10	Prescription registry	No	9

*Risk estimate for SNA vs. unexposed was requested from the lead-author (Carol Coupland) and generously provided by email

#Risk estimates for any antidepressant vs. unexposed were calculated based on the data from the contingency table

6. Quality ratings of studies included in the meta-analysis

	Population framework	Study design	Demographic data	Clinical data	Outcome data	Covariate adjustment
Bilen 2011	1	2	1	0	1	2
Bjorkenstam 2013	2	2	1	0	2	2
Carlsten 2009	2	1	1	0	2	2
Castelpietra	2	1	0	1	2	2
Chartrand 2012	2	2	0	0	1	2
Cheung 2014	1	2	1	1	2	2
Coupland 2011	1	2	1	1	2	2
Coupland 2015	1	2	1	1	2	2
Didham 2005	1	1	1	0	2	1
Eikelenboom 2019	2	2	1	1	1	2
Erlangsen 2009	2	2	0	1	2	2
Gibbons 2007	1	2	0	1	2	0
Leon 1999	0	2	0	1	2	2
Martinez 2005	1	1	0	1	2	2
Olfson 2006	1	1	1	1	2	2

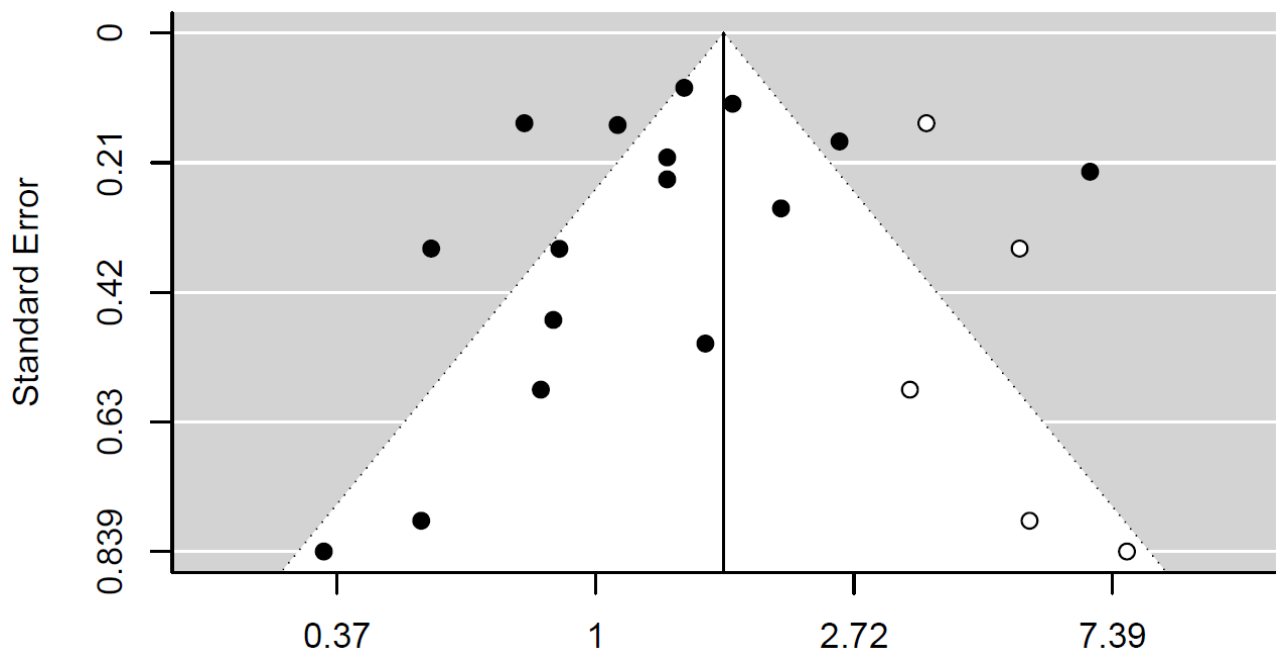
Olfson 2008	1	1	1	1	2	2
Olmer 2012	1	1	0	1	2	2
Rahman 2014	2	2	1	0	1	2
Rahme 2008	2	2	1	1	2	0
Raja 2009	1	1	0	1	2	0
Sondergard 2007	2	2	1	1	2	1
Spittal 2019	1	1	0	0	1	2
Swanson 2015	1	2	1	1	1	2
Termorshuizen 2016	1	2	0	0	1	0
Tiihonen 2006	2	2	1	0	2	2
Valuck 2016	1	2	1	1	1	2
Wang 2015	2	2	1	0	2	2

7. Assessment of publication bias

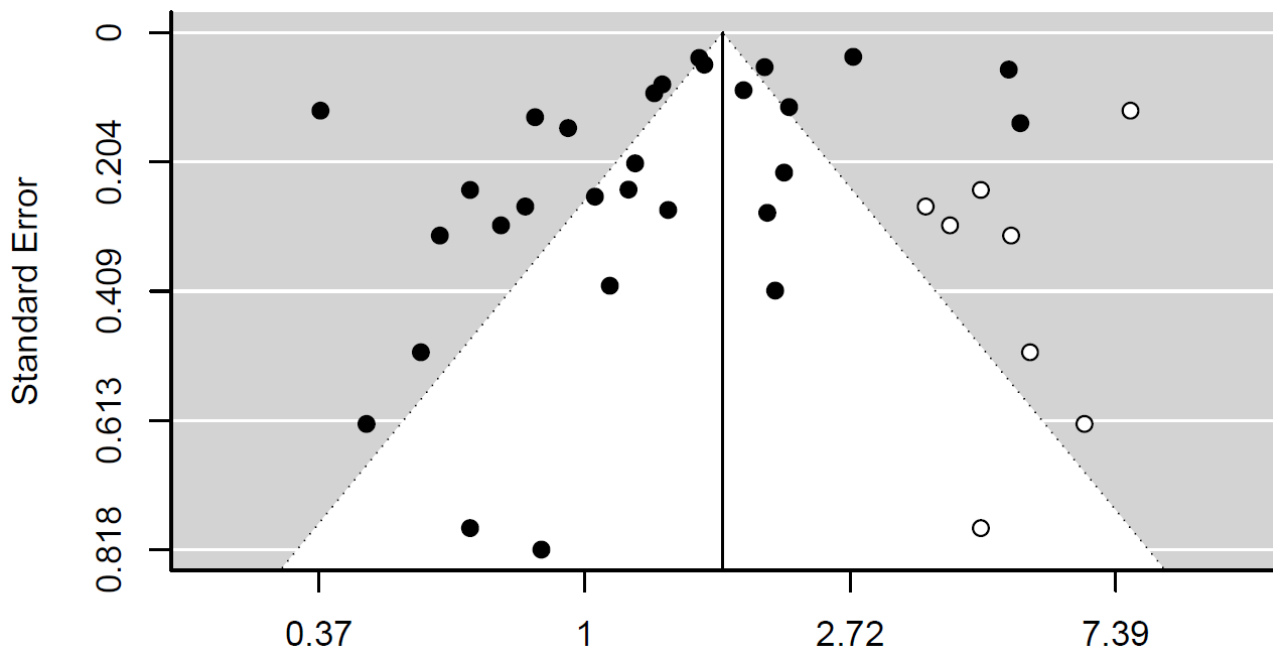
We examined possible publication bias through visual inspection of funnel-plots and formally tested for funnel-plot asymmetry using the mixed-effects version of Egger's test.³⁶ This test statistic is derived from a mixed-effects meta-regression of the standard error on the study effect sizes. Due to previously described low power of detecting funnel-plot asymmetry, Egger suggests a significance level of $p < 0.1$ for evaluating publication bias. As inspection of funnel-plot asymmetry can be challenging, we prespecified in the protocol that we would mainly base our analysis of publication bias on the trim-and-fill method.³⁷

Funnel-plots display standard error on the y-axis and the effect estimate on the x-axis. This allows for estimation of asymmetry given the hypothesized normal distribution around a true effect with larger variance and larger standard error in smaller sample size (lower part of the funnel) and smaller standard error in larger studies (upper part of the funnel). Overall, the investigated studies are large and have small standard errors (estimates cluster in the upper part of the plot). Visual inspection reveals funnel-plot asymmetry, as published studies (black circles) cluster on the left part of the summary effect estimate. We additionally display estimates for missing studies (white circles) imputed with trim-and-fill method.

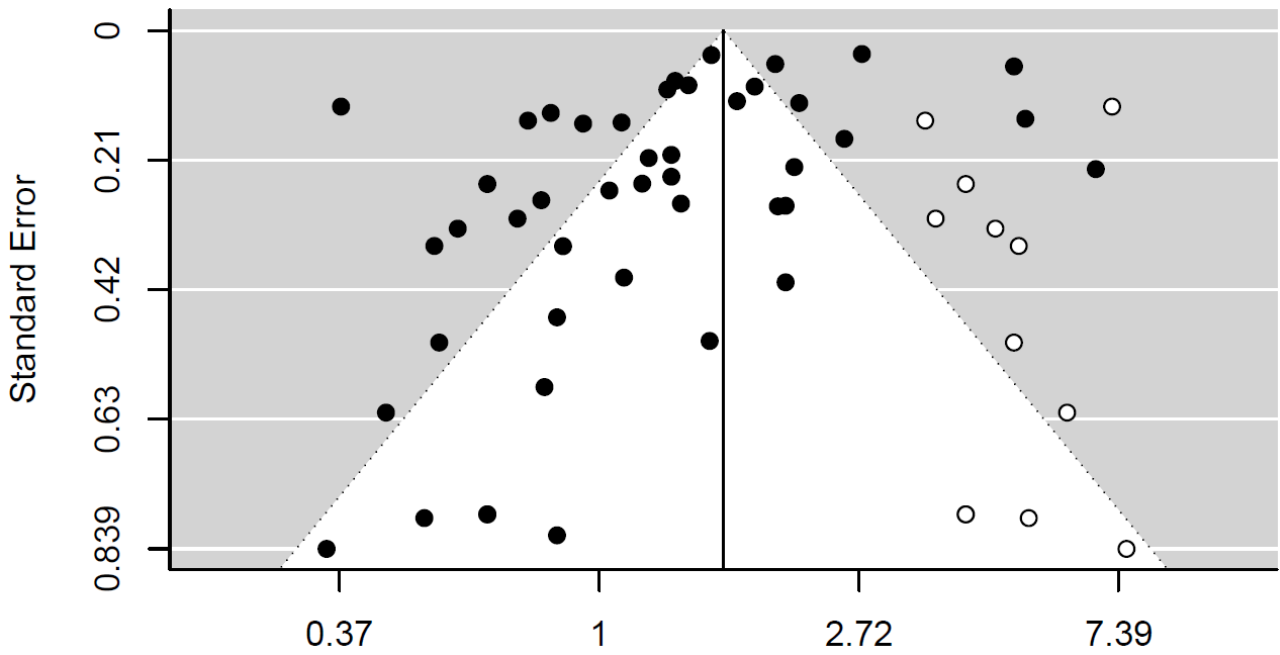
8. Funnel plots for main results



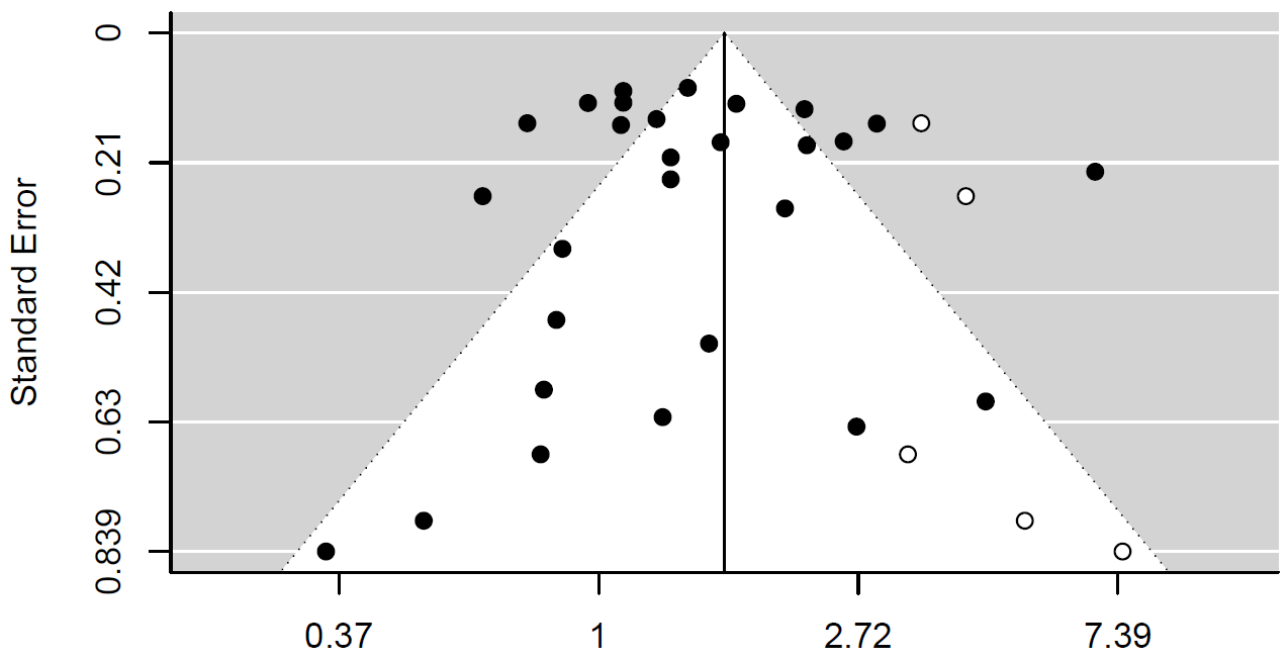
Risk of suicide with any new-generation antidepressant in studies of depression; Visual inspection and Egger's test for funnel-plot asymmetry indicate publication bias, $t = -1.95$, $df = 14$, $p = 0.072$



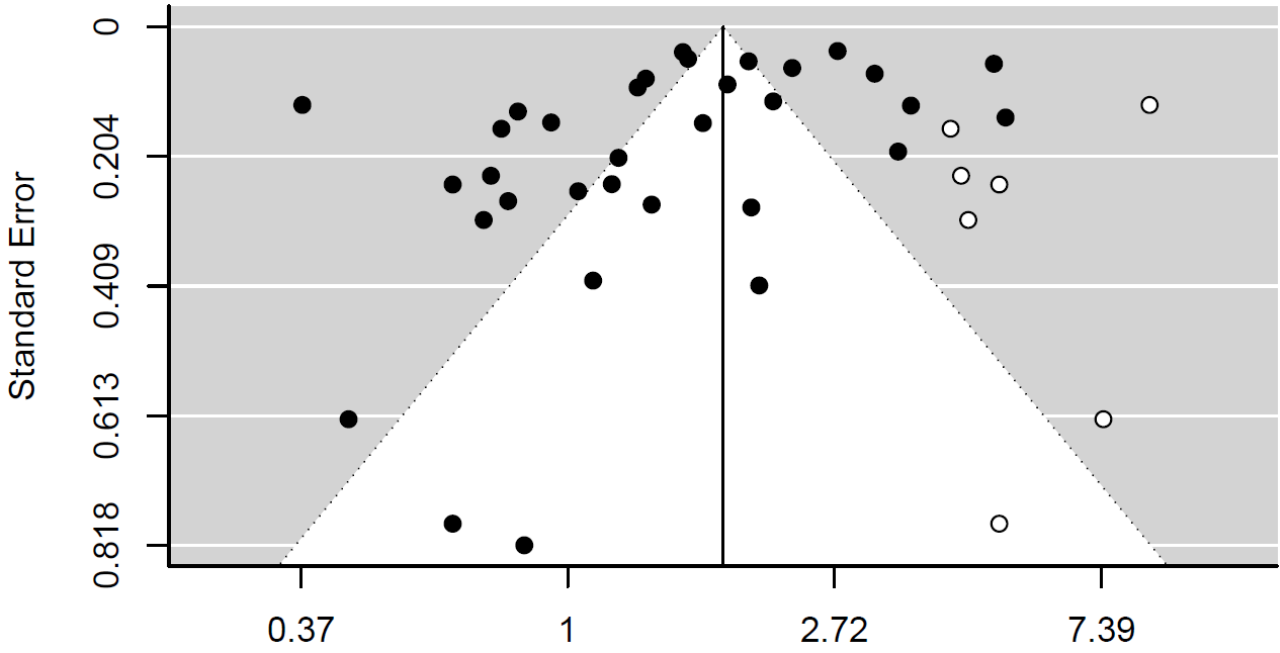
Risk of suicide attempt with any new-generation antidepressant in studies of depression; Visual inspection and Egger's test for funnel-plot asymmetry indicate publication bias, $t = -2.66$, $df = 27$, $p = 0.013$



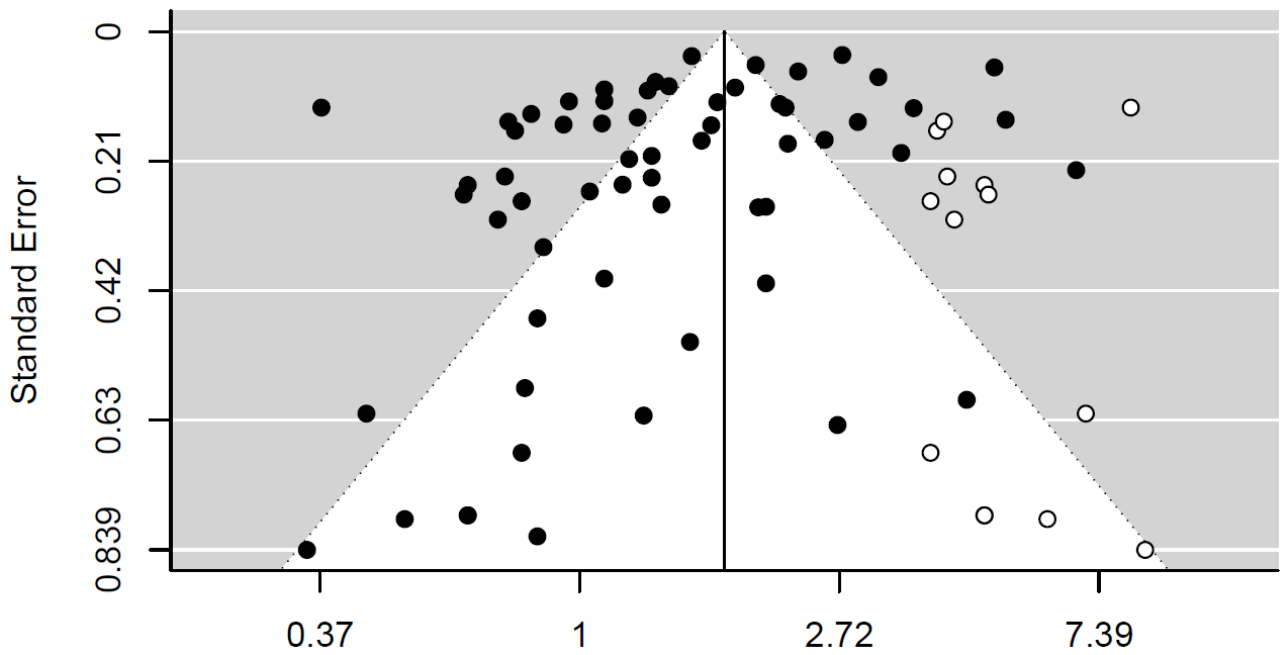
Risk of suicide and suicide attempt combined with any new-generation antidepressant in studies of depression; Visual inspection and Egger's test for funnel-plot asymmetry indicate publication bias, $t=-3.35$, $df=43$, $p=0.002$



Risk of suicide with any new-generation antidepressant in studies of all treatment indications; Visual inspection suggests asymmetry, but Egger's test for funnel-plot asymmetry indicates no publication bias, $t=-1.02$, $df=26$, $p=0.319$



Risk of suicide attempt with any new-generation antidepressant in studies of all treatment indications; Visual inspection and Egger's test for funnel-plot asymmetry indicate publication bias, $t=-2.60$, $df=31$, $p=0.014$



Risk of suicide and suicide attempt combined with any new-generation antidepressant in studies of all treatment indications; Visual inspection and Egger's test for funnel-plot asymmetry indicate publication bias, $t=-2.67$, $df=59$, $p=0.010$

9. Sensitivity analysis without outlier effects

For the detection of possible outlier effects we formally tested for possible influential data points by calculating studentized residuals.³⁸ Plotting studentized residuals revealed possible outliers (studentized residuals >2) for the SNA effect estimates in both studies by Coupland et al.^{15 16} and for the SSRI effect estimate in Gibbons et al.²⁰ Therefore, we repeated all analyses without these outlier effect estimates.

The summary effect estimates for depression without potential outliers were as follows:

The risk of suicide with any new-generation antidepressant was RE=1.18, 0.90-1.54 (for SSRI, RE=1.09, 0.51-2.33; for SNA, RE=1.09, 0.71-1.68). The funnel-plot was asymmetrical ($t=-2.17$, $df=13$, $p=0.049$) and the trim-and-fill method suggested that 5 studies were missing; the summary effect estimate with the missing studies imputed was RE=1.43, 1.05-1.96. Study fCOI was a significant moderator ($Q=6.78$, $df=1$, $p=0.009$); the risk estimates were considerably smaller in studies with fCOI (RE=1.00, 0.75-1.34) as compared to studies without fCOI (RE=1.75, 1.01-3.03).

The risk of suicide attempt with any new-generation antidepressant was RE=1.27, 1.05-1.53 (for SSRI, RE=1.17, 0.68-2.00; for SNA, RE=1.00, 0.77-1.30). The funnel-plot was asymmetrical ($t=-3.36$, $df=24$, $p=0.003$) and the trim-and-fill method suggested that 7 studies were missing; the summary effect estimate with the missing studies imputed was RE=1.49, 1.21-1.85. Study fCOI was a significant moderator ($Q=7.66$, $df=1$, $p=0.006$); the risk estimates were considerably smaller in studies with fCOI (RE=1.03, 0.84-1.27) as compared to studies without fCOI (RE=1.59, 1.21-2.08).

The risk of suicide and suicide attempt combined with any new-generation antidepressant was RE=1.22, 1.05-1.42 (for SSRI, RE=1.15, 0.80-1.65; for SNA, RE=0.98, 0.81-1.19). The funnel-plot was asymmetrical ($t=-4.11$, $df=39$, $p<0.001$) and the trim-and-fill method suggested that 12 studies were missing; the summary effect estimate with the missing studies imputed was RE=1.45, 1.22-1.74. Study fCOI was a significant moderator ($Q=19.13$, $df=1$, $p<0.001$); the risk estimates were considerably smaller in studies with fCOI (RE=0.92, 0.77-1.10) as compared to studies without fCOI (RE=1.93, 1.42-2.62).

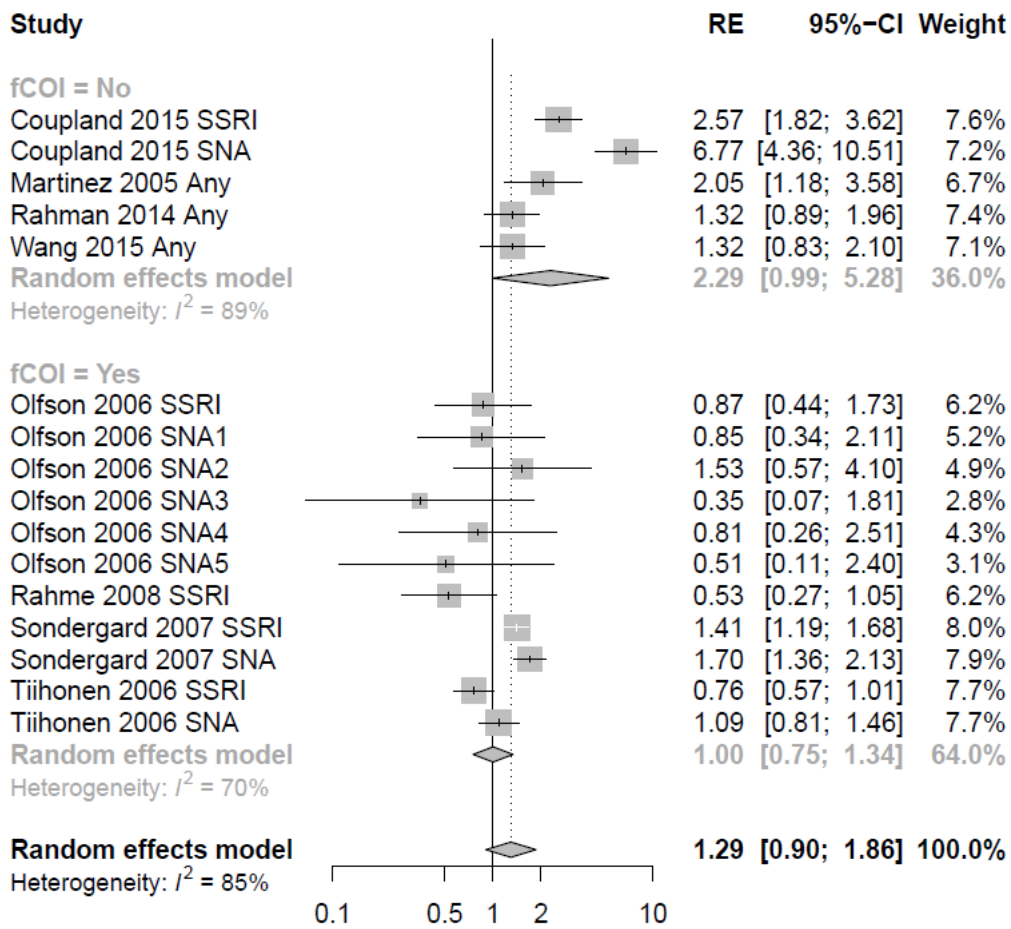
The summary effect estimates for all treatment indications without potential outliers were as follows:

The risk of suicide with any new-generation antidepressant was RE=1.36, 1.12-1.64 (for SSRI, RE=1.33, 0.86-2.04; for SNA, RE=1.12, 0.86-1.46). The funnel-plot was not found to be asymmetrical ($t=-1.02$, $df=25$, $p=0.316$), but the trim-and-fill method suggested that 3 studies were missing; the summary effect estimate with the missing studies imputed was RE=1.44, 1.17-1.79. Study fCOI was a significant moderator ($Q=10.30$, $df=1$, $p=0.001$); the risk estimates were considerably smaller in studies with fCOI (RE=1.08, 0.88-1.33) as compared to studies without fCOI (RE=1.77, 1.36-2.31).

The risk of suicide attempt with any new-generation antidepressant was RE=1.43, 1.18-1.74 (for SSRI, RE=1.27, 0.82-1.96; for SNA, RE=1.00, 0.78-1.28). The funnel-plot was asymmetrical ($t=-2.98$, $df=28$, $p=0.006$) and the trim-and-fill method suggested that 9 studies were missing; the summary effect estimate with the missing studies imputed was RE=1.77, 1.43-2.19. Study fCOI was a significant moderator ($Q=15.30$, $df=1$, $p<0.001$); the risk estimates were considerably smaller in studies with fCOI (RE=1.03, 0.84-1.27) as compared to studies without fCOI (RE=1.83, 1.44-2.33).

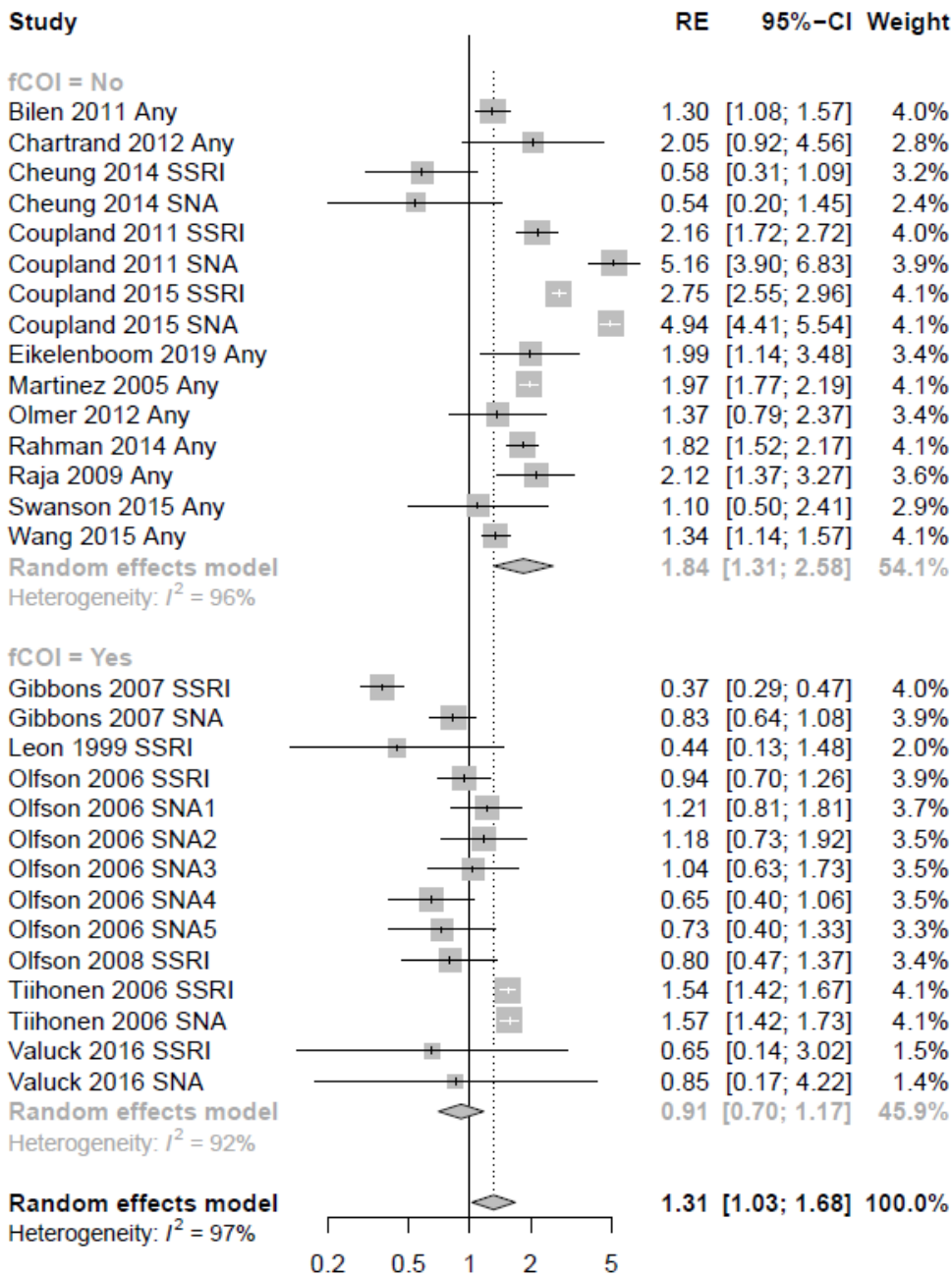
The risk of suicide and suicide attempt combined with any new-generation antidepressant was RE=1.39, 1.22-1.59 (for SSRI, RE=1.30, 0.99-1.71; for SNA, RE=1.01, 0.87-1.17). The funnel-plot was asymmetrical ($t=-2.93$, $df=55$, $p=0.005$) and the trim-and-fill method suggested that 12 studies were missing; the summary effect estimate with the missing studies imputed was RE=1.60, 1.37-1.86. Study fCOI was a significant moderator ($Q=29.64$, $df=1$, $p<0.001$); the risk estimates were considerably smaller in studies with fCOI (RE=1.03, 0.90-1.17) as compared to studies without fCOI (RE=1.81, 1.53-2.15).

10. Forest plots for fCOI subgroups

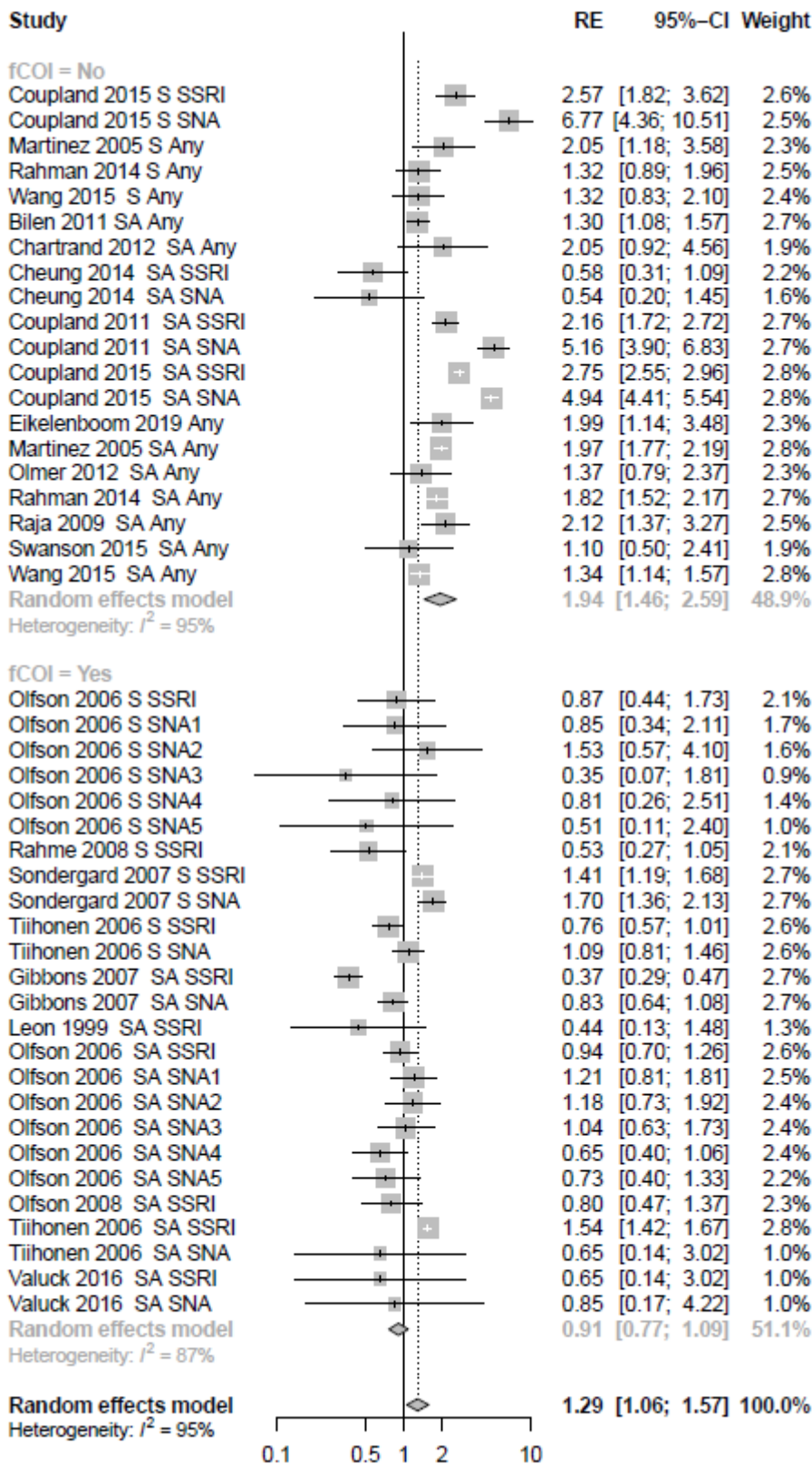


Risk of suicide with any new-generation antidepressant in studies of depression; test for subgroup difference,

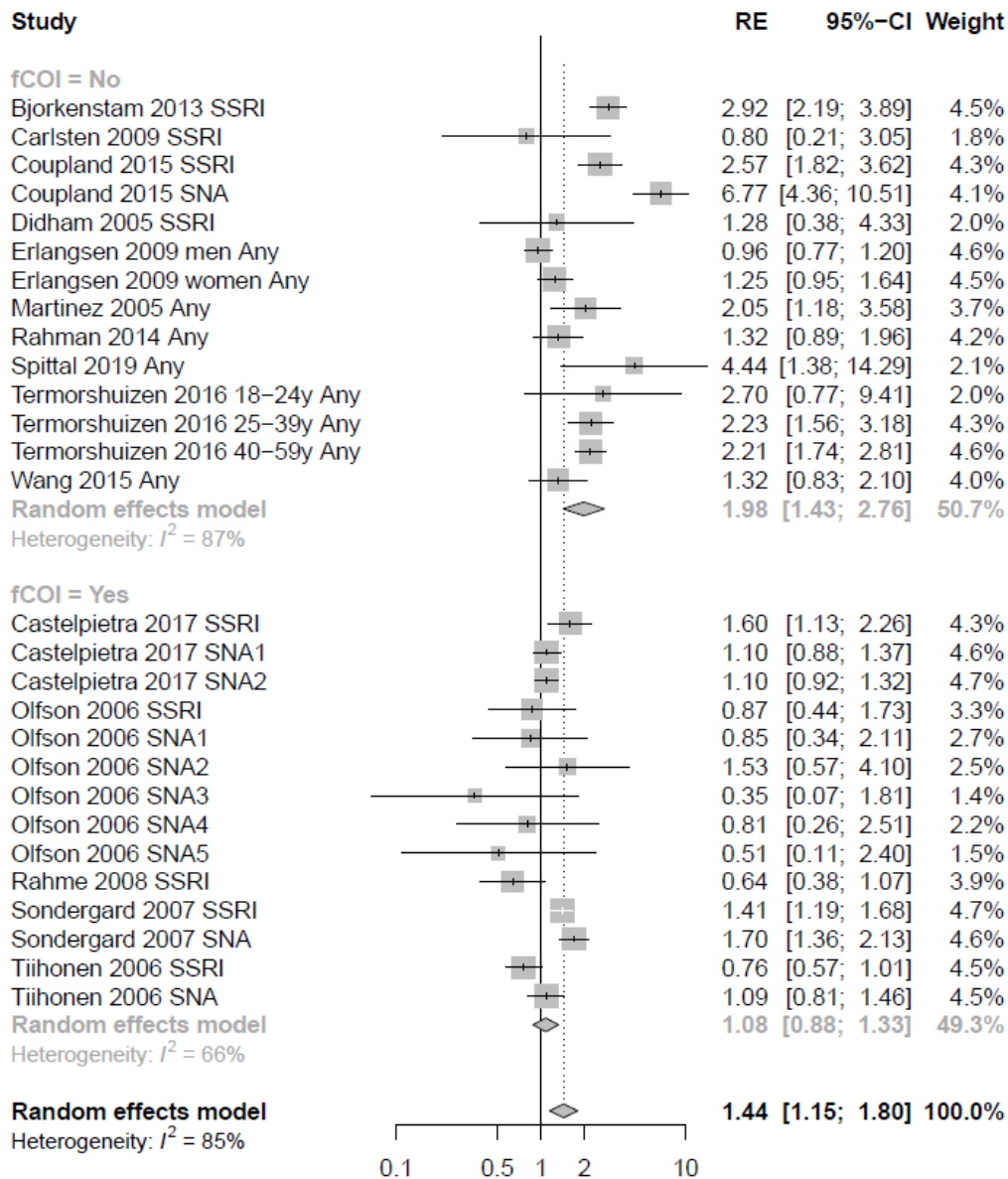
Q=6.35, df=1, p=0.012



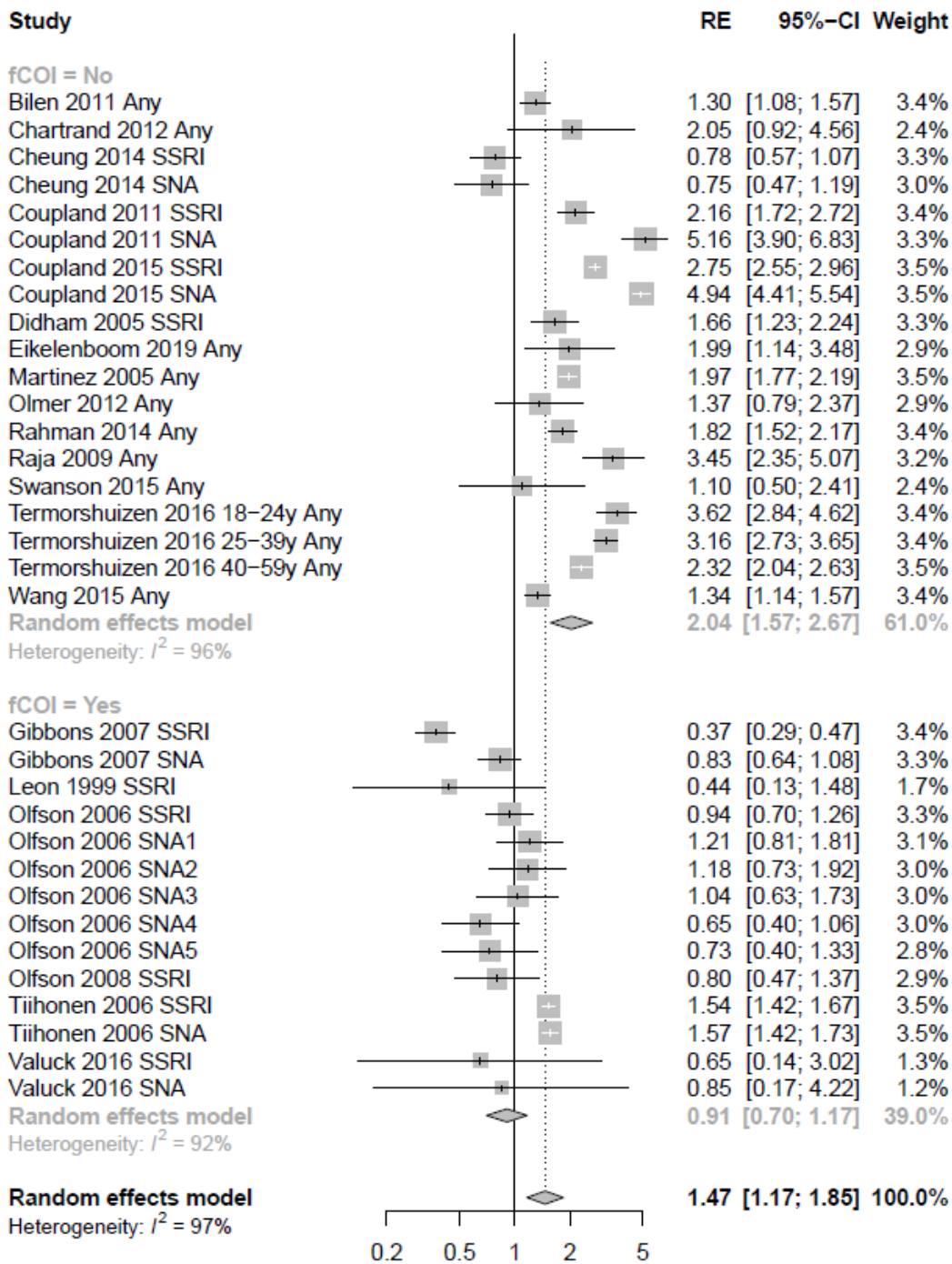
Risk of suicide attempt with any new-generation antidepressant in studies of depression; test for subgroup difference, $Q=12.86$, $df=1$, $p<0.001$



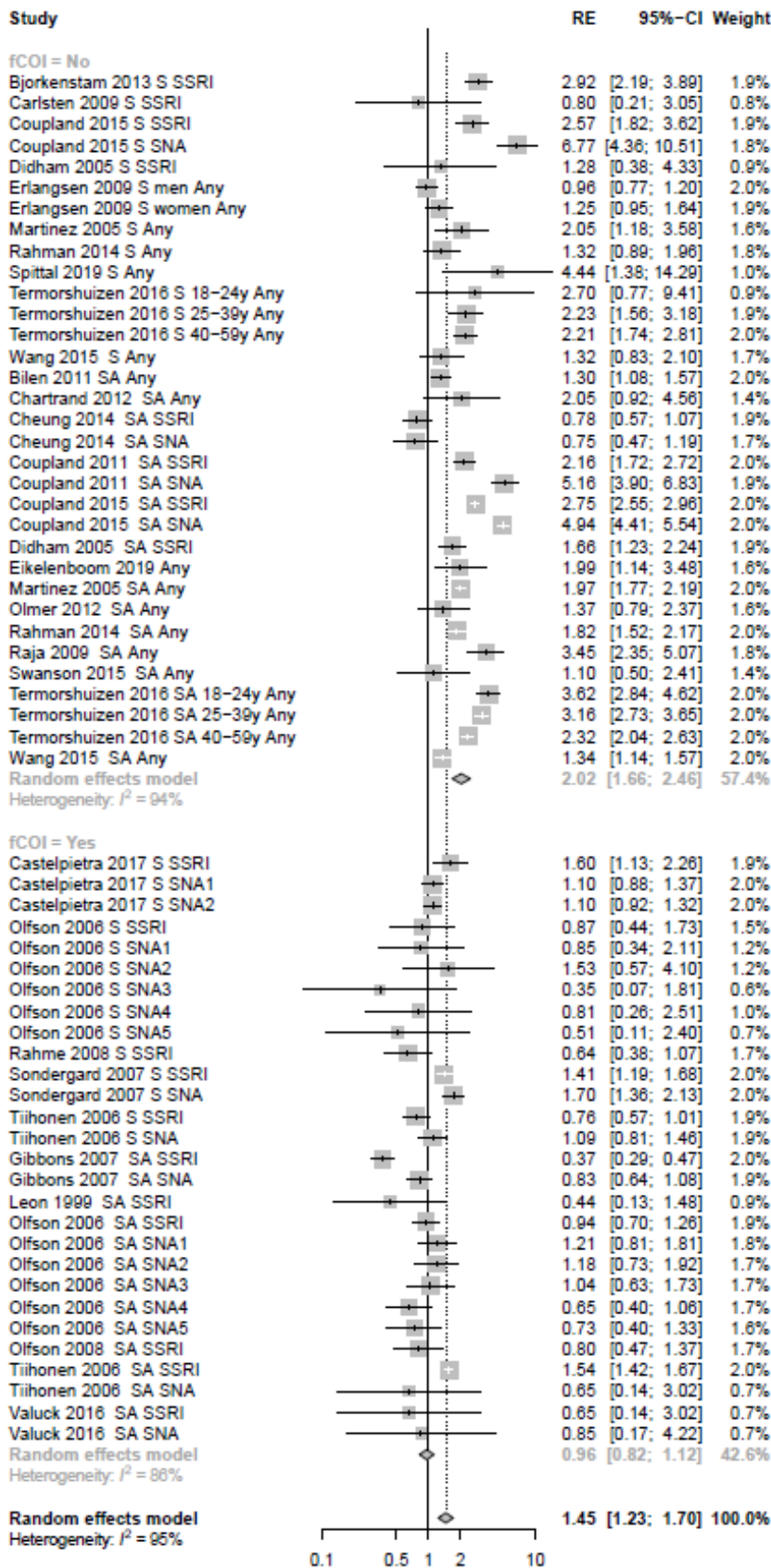
Risk of suicide and suicide attempt combined with any new-generation antidepressant in studies of depression; test for subgroup difference, $Q=21.87$, $df=1$, $p<0.001$



Risk of suicide with any new-generation antidepressant in studies of all treatment indications; test for subgroup difference, $Q=11.36$, $df=1$, $p<0.001$

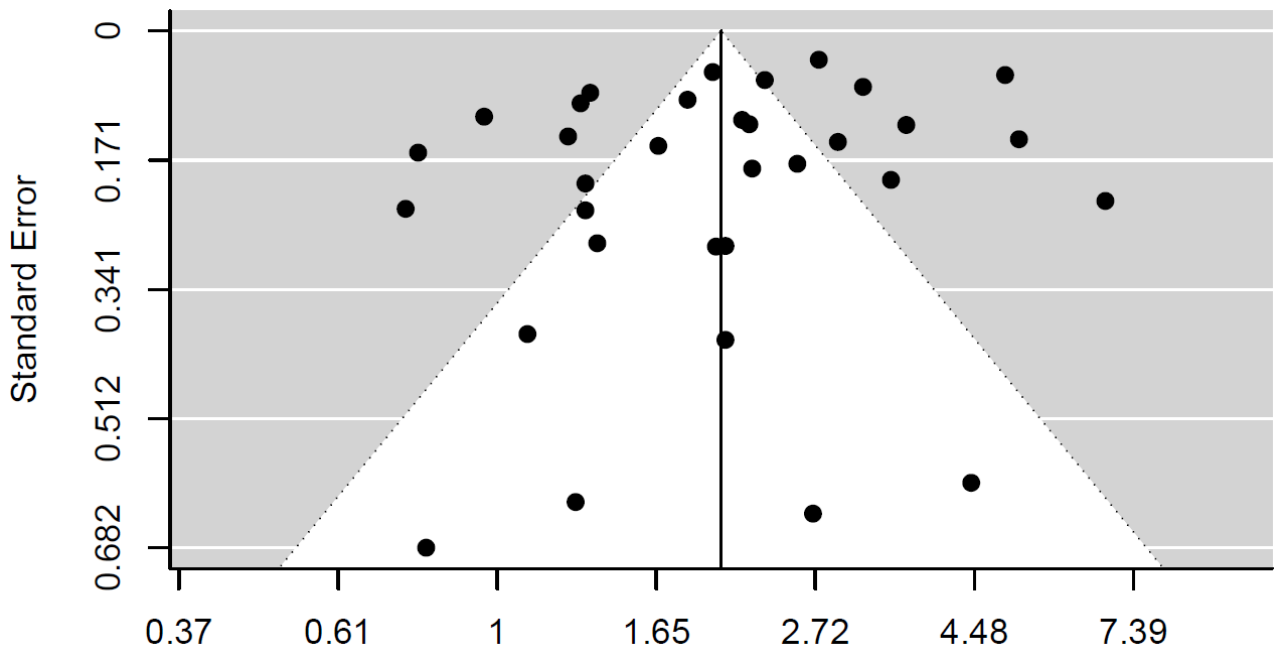


Risk of suicide attempt with any new-generation antidepressant in studies of all treatment indications; test for subgroup difference, $Q=21.97$, $df=1$, $p<0.001$

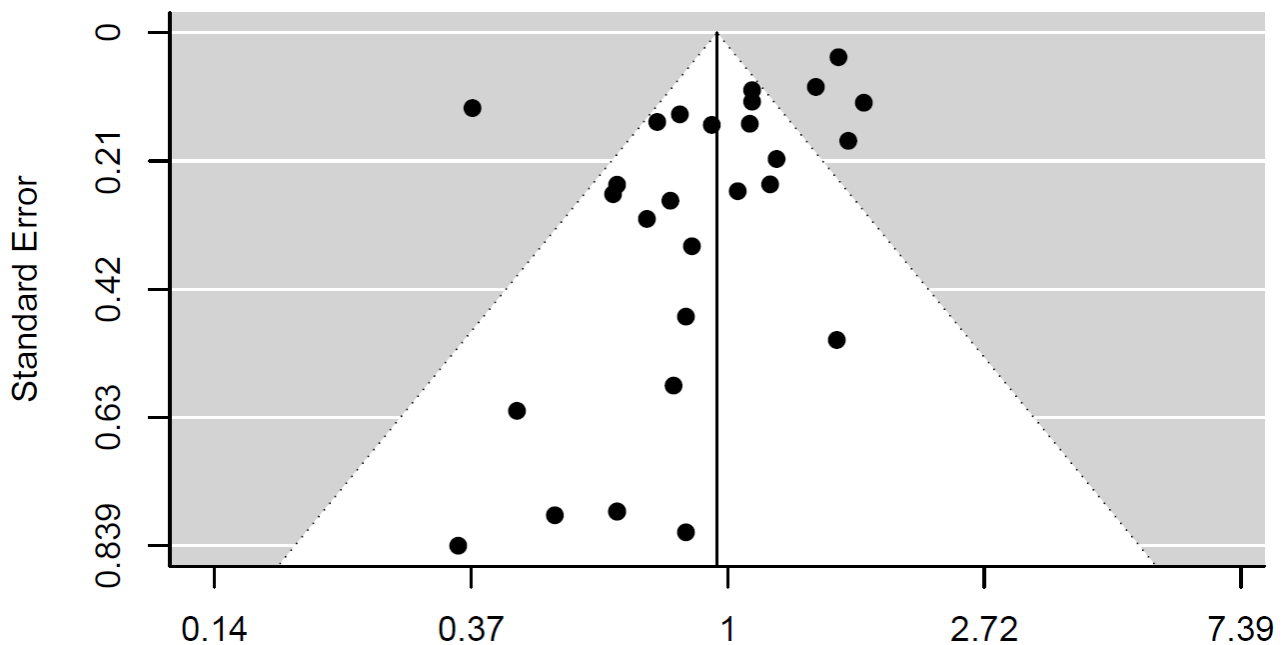


Risk of suicide and suicide attempt combined with any new-generation antidepressant in studies of all treatment indications; test for subgroup difference, $Q=37.17$, $df=1$, $p<0.001$

11. Funnel plots for fCOI subgroups



Risk of suicide and suicide attempt combined with any new-generation antidepressant in studies of all treatment indications without fCOI; Visual inspection and Egger's test for funnel-plot asymmetry indicate no publication bias, $t=-0.8456$, $df=31$, $p=0.404$



Risk of suicide and suicide attempt combined with any new-generation antidepressant in studies of all treatment indications with fCOI; Visual inspection and Egger's test for funnel-plot asymmetry indicate publication bias, $t=-2.1368$, $df=26$, $p=0.042$

12. References

1. Bhutta AT, Cleves MA, Casey PH, et al. Cognitive and behavioral outcomes of school-aged children who were born preterm: a meta-analysis. *JAMA* 2002;288(6):728-37. doi: 10.1001/jama.288.6.728
2. Etminan M, Takkouche B, Isorna FC, et al. Risk of ischaemic stroke in people with migraine: systematic review and meta-analysis of observational studies. *BMJ* 2005;330(7482):63. doi: 10.1136/bmj.38302.504063.8F
3. Barbui C, Esposito E, Cipriani A. Selective serotonin reuptake inhibitors and risk of suicide: a systematic review of observational studies. *CMAJ* 2009;180(3):291-7. doi: 10.1503/cmaj.081514
4. Haukka J, Tiihonen J, Harkanen T, et al. Association between medication and risk of suicide, attempted suicide and death in nationwide cohort of suicidal patients with schizophrenia. *Pharmacoepidemiol Drug Saf* 2008;17(7):686-96. doi: 10.1002/pds.1579
5. Tiihonen J, Suokas JT, Suvisaari JM, et al. Polypharmacy with antipsychotics, antidepressants, or benzodiazepines and mortality in schizophrenia. *Arch Gen Psychiatry* 2012;69(5):476-83. doi: 10.1001/archgenpsychiatry.2011.1532
6. Reutfors J, Bahmanyar S, Jonsson EG, et al. Medication and suicide risk in schizophrenia: a nested case-control study. *Schizophr Res* 2013;150(2-3):416-20. doi: 10.1016/j.schres.2013.09.001
7. Park SJ, Lee HB, Ahn MH, et al. Identifying clinical correlates for suicide among epilepsy patients in South Korea: A case-control study. *Epilepsia* 2015;56(12):1966-72. doi: 10.1111/epi.13226
8. Seyfried LS, Kales HC, Ignacio RV, et al. Predictors of suicide in patients with dementia. *Alzheimers Dement* 2011;7(6):567-73. doi: 10.1016/j.jalz.2011.01.006
9. Bilen K, Ottosson C, Castren M, et al. Deliberate self-harm patients in the emergency department: factors associated with repeated self-harm among 1524 patients. *Emerg Med J* 2011;28(12):1019-25. doi: 10.1136/emj.2010.102616
10. Bjorkenstam C, Moller J, Ringback G, et al. An association between initiation of selective serotonin reuptake inhibitors and suicide - a nationwide register-based case-crossover study. *PLoS One* 2013;8(9):e73973. doi: 10.1371/journal.pone.0073973
11. Carlsten A, Waern M. Are sedatives and hypnotics associated with increased suicide risk of suicide in the elderly? *BMC Geriatr* 2009;9:20. doi: 10.1186/1471-2318-9-20

12. Castelpietra G, Gobbato M, Valent F, et al. Antidepressant use in suicides: a case-control study from the Friuli Venezia Giulia Region, Italy, 2005-2014. *Eur J Clin Pharmacol* 2017;73(7):883-90. doi: 10.1007/s00228-017-2236-0
13. Chartrand H, Robinson J, Bolton JM. A longitudinal population-based study exploring treatment utilization and suicidal ideation and behavior in major depressive disorder. *J Affect Disord* 2012;141(2-3):237-45. doi: 10.1016/j.jad.2012.03.040
14. Cheung K, Aarts N, Noordam R, et al. Antidepressant use and the risk of suicide: a population-based cohort study. *J Affect Disord* 2015;174:479-84. doi: 10.1016/j.jad.2014.12.032
15. Coupland C, Dhiman P, Morriss R, et al. Antidepressant use and risk of adverse outcomes in older people: population based cohort study. *BMJ* 2011;343:d4551. doi: 10.1136/bmj.d4551
16. Coupland C, Hill T, Morriss R, et al. Antidepressant use and risk of suicide and attempted suicide or self harm in people aged 20 to 64: cohort study using a primary care database. *BMJ* 2015;350:h517. doi: 10.1136/bmj.h517
17. Didham RC, McConnell DW, Blair HJ, et al. Suicide and self-harm following prescription of SSRIs and other antidepressants: confounding by indication. *Br J Clin Pharmacol* 2005;60(5):519-25. doi: 10.1111/j.1365-2125.2005.02480.x
18. Eikelenboom M, Beekman ATF, Penninx B, et al. A 6-year longitudinal study of predictors for suicide attempts in major depressive disorder. *Psychol Med* 2019;49(6):911-21. doi: 10.1017/S0033291718001423
19. Erlangsen A, Agerbo E, Hawton K, et al. Early discontinuation of antidepressant treatment and suicide risk among persons aged 50 and over: a population-based register study. *J Affect Disord* 2009;119(1-3):194-9. doi: 10.1016/j.jad.2009.03.011
20. Gibbons RD, Brown CH, Hur K, et al. Relationship between antidepressants and suicide attempts: an analysis of the Veterans Health Administration data sets. *Am J Psychiatry* 2007;164(7):1044-9. doi: 10.1176/ajp.2007.164.7.1044
21. Leon AC, Keller MB, Warshaw MG, et al. Prospective study of fluoxetine treatment and suicidal behavior in affectively ill subjects. *Am J Psychiatry* 1999;156(2):195-201. doi: 10.1176/ajp.156.2.195

22. Martinez C, Rietbrock S, Wise L, et al. Antidepressant treatment and the risk of fatal and non-fatal self harm in first episode depression: nested case-control study. *BMJ* 2005;330(7488):389. doi: 10.1136/bmj.330.7488.389
23. Olfson M, Marcus SC, Shaffer D. Antidepressant drug therapy and suicide in severely depressed children and adults: A case-control study. *Arch Gen Psychiatry* 2006;63(8):865-72. doi: 10.1001/archpsyc.63.8.865
24. Olfson M, Marcus SC. A case-control study of antidepressants and attempted suicide during early phase treatment of major depressive episodes. *J Clin Psychiatry* 2008;69(3):425-32. doi: 10.4088/jcp.v69n0313
25. Olmer A, Iancu I, Strous RD. Exposure to antidepressant medications and suicide attempts in adult depressed inpatients. *J Nerv Ment Dis* 2012;200(6):531-4. doi: 10.1097/NMD.0b013e318257c7e7
26. Rahman S, Alexanderson K, Jokinen J, et al. Risk factors for suicidal behaviour in individuals on disability pension due to common mental disorders - a nationwide register-based prospective cohort study in Sweden. *PLoS One* 2014;9(5):e98497. doi: 10.1371/journal.pone.0098497
27. Rahme E, Dasgupta K, Turecki G, et al. Risks of suicide and poisoning among elderly patients prescribed selective serotonin reuptake inhibitors: a retrospective cohort study. *J Clin Psychiatry* 2008;69(3):349-57. doi: 10.4088/jcp.v69n0303
28. Raja M, Azzoni A, Koukopoulos AE. Psychopharmacological treatment before suicide attempt among patients admitted to a psychiatric intensive care unit. *J Affect Disord* 2009;113(1-2):37-44. doi: 10.1016/j.jad.2008.04.024
29. Sondergard L, Lopez AG, Andersen PK, et al. Continued antidepressant treatment and suicide in patients with depressive disorder. *Arch Suicide Res* 2007;11(2):163-75. doi: 10.1080/13811110701249889
30. Spittal MJ, Forsyth S, Borschmann R, et al. Modifiable risk factors for external cause mortality after release from prison: a nested case-control study. *Epidemiol Psychiatr Sci* 2019;28(2):224-33. doi: 10.1017/S2045796017000506
31. Swanson SA, Hernandez-Diaz S, Palmsten K, et al. Methodological considerations in assessing the effectiveness of antidepressant medication continuation during pregnancy using administrative data. *Pharmacoepidemiol Drug Saf* 2015;24(9):934-42. doi: 10.1002/pds.3798

32. Termorshuizen F, Smeets HM, Boks MP, et al. Comparing episodes of antidepressants use with intermittent episodes of no use: A higher relative risk of suicide attempts but not of suicide at young age. *J Psychopharmacol* 2016;30(10):1000-7. doi: 10.1177/0269881116639752
33. Tiihonen J, Lonnqvist J, Wahlbeck K, et al. Antidepressants and the risk of suicide, attempted suicide, and overall mortality in a nationwide cohort. *Arch Gen Psychiatry* 2006;63(12):1358-67. doi: 10.1001/archpsyc.63.12.1358
34. Valuck RJ, Libby AM, Anderson HD, et al. Comparison of antidepressant classes and the risk and time course of suicide attempts in adults: propensity matched, retrospective cohort study. *Br J Psychiatry* 2016;208(3):271-9. doi: 10.1192/bjp.bp.114.150839
35. Wang M, Alexanderson K, Runeson B, et al. Sick-leave measures, socio-demographic factors and health care as risk indicators for suicidal behavior in patients with depressive disorders--a nationwide prospective cohort study in Sweden. *J Affect Disord* 2015;173:201-10. doi: 10.1016/j.jad.2014.10.069
36. Egger M, Davey Smith G, Schneider M, et al. Bias in meta-analysis detected by a simple, graphical test. *BMJ* 1997;315(7109):629-34. doi: 10.1136/bmj.315.7109.629
37. Duval S, Tweedie R. Trim and fill: A simple funnel-plot-based method of testing and adjusting for publication bias in meta-analysis. *Biometrics* 2000;56(2):455-63. doi: 10.1111/j.0006-341x.2000.00455.x
38. Viechtbauer W, Cheung MW. Outlier and influence diagnostics for meta-analysis. *Res Synth Methods* 2010;1(2):112-25. doi: 10.1002/jrsm.11