

Supplementary Information for

Early transmission of COVID-19 has an optimal temperature but late transmission decreases in warm climate

Xinru Wan, Chaoyuan Cheng and Zhibin Zhang

Corresponding author: Zhibin Zhang

Email: zhangzb@ioz.ac.cn

This PDF file includes:

Correlation between the transmission severity and human/climate factors

Table S1 to S4

Figure S1 to S7

Correlation between the transmission severity and human/climate factors

Using Pearson's correlation analysis on data from 1 January to 11 March in China, we found the average daily increase rate was negative correlated with temperature ($r = -0.11, p < 0.05$), the maximum daily increase rate was positive correlated with founding population size during the initial 7 days after the first patient ($r = 0.28, p < 0.001$), the control efficiency was positive correlated with founding population size during the initial 7 days after the first patient ($r = 0.21, p < 0.001$), human population ($r = 0.19, p < 0.001$), and precipitation ($r = 0.24, p < 0.001$) (Fig. S2).

Using Pearson's correlation analysis on data from 20 January to 4 April in the USA, we found the maximum daily increase rate was positive correlated with founding population size during the initial 7 days after the first patient ($r = 0.63, p < 0.001$), the control efficiency was positive correlated with human population ($r = 0.41, p < 0.01$), and precipitation ($r = 0.40, p < 0.01$) (Fig. S3).

Using Pearson's correlation analysis on data from 20 January to 4 April in Europe, we found the maximum daily increase rate was positive correlated with founding population size during the initial 7 days after the first patient ($r = 0.49, p < 0.001$), the control efficiency was positive correlated with founding population size during the initial 7 days after the first patient ($r = -0.33, p < 0.05$) (Fig. S4).

Using Pearson's correlation analysis on data from 1 January to 4 April for the world data, we found the average daily increase rate was positive correlated with precipitation ($r = 0.11, p < 0.01$), maximum daily increase rate was positive correlated with founding population size during the initial 7 days after the first patient ($r = 0.30, p < 0.001$), but

negative correlated with human population ($r = -0.14, p < 0.01$), temperature ($r = -0.22, p < 0.001$), and precipitation ($r = -0.12, p < 0.01$), the control efficiency was positive correlated with founding population size during the initial 7 days after the first patient ($r = 0.15, p < 0.001$), temperature ($r = 0.10, p < 0.05$), and precipitation ($r = 0.19, p < 0.001$) (Fig. S5).

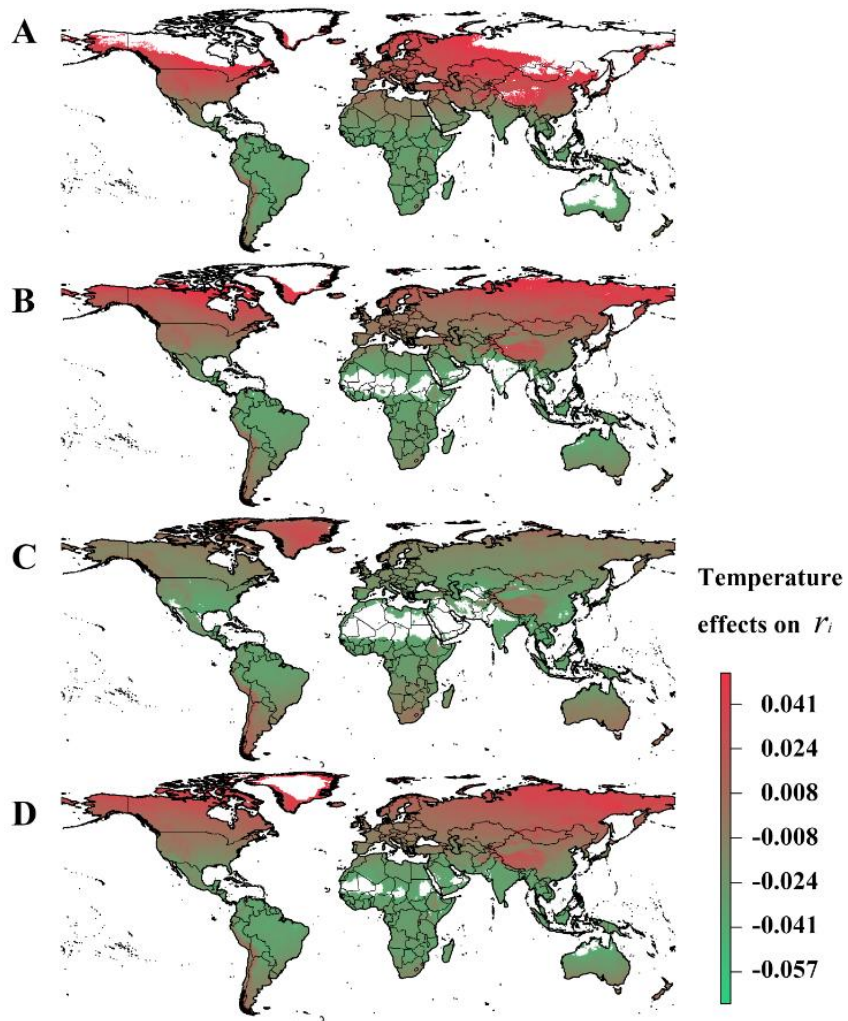


Fig. S1. Seasonal projected partial effects of air temperature on the average daily increase rate (r_i) under human intervention in January (A), April (B), July (C) and October (D). Colors (green to red: negative to positive) indicate the temperature effects on average daily increase rate (r_i).

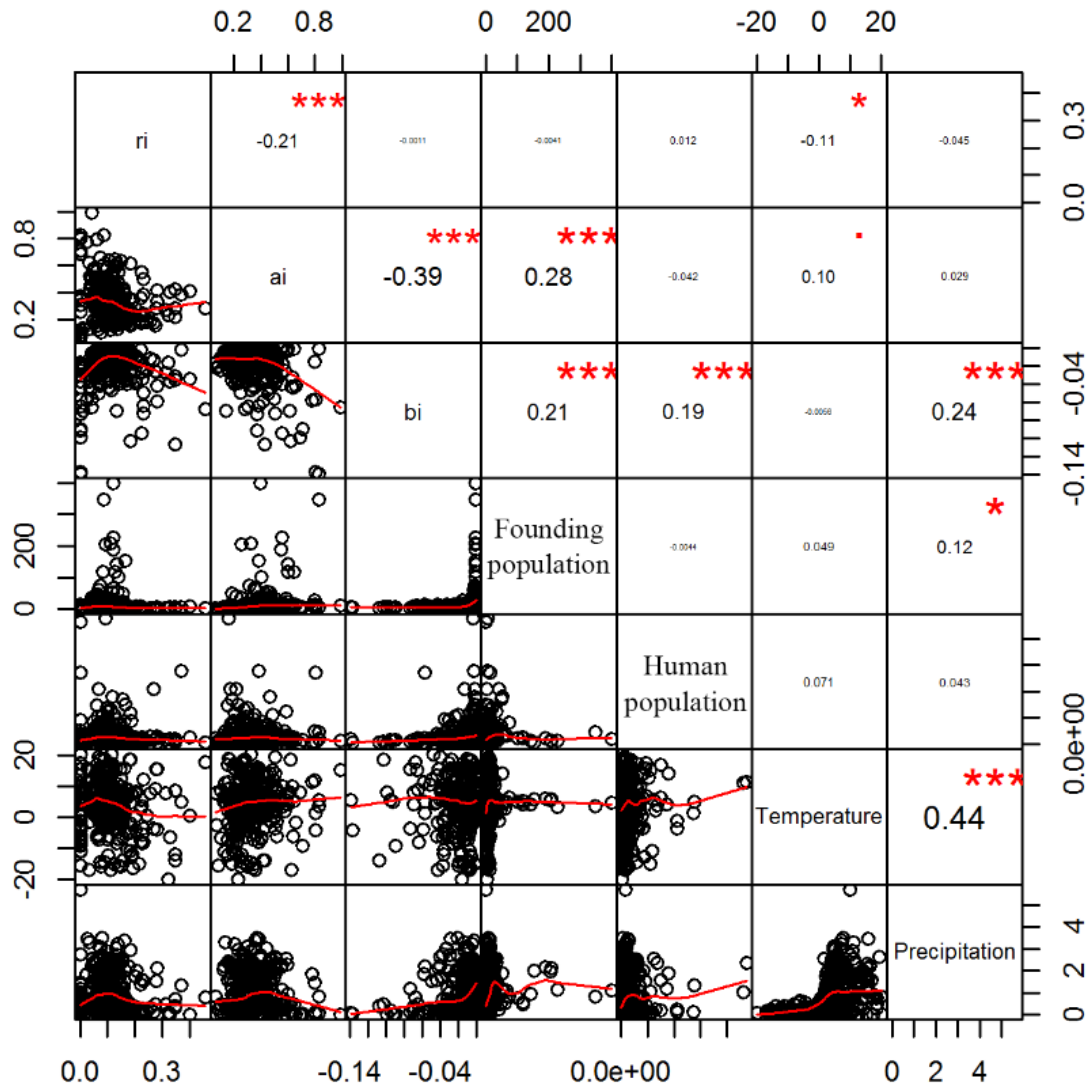


Fig. S2. Correlation of the average daily increase rate (r_i) of cumulative cases, maximum daily increase rate (a_i), and control efficiency (b_i) of COVID-19 with founding population size during the initial 7 days after the first patient, human population, and climate factors (temperature and precipitation) in China.

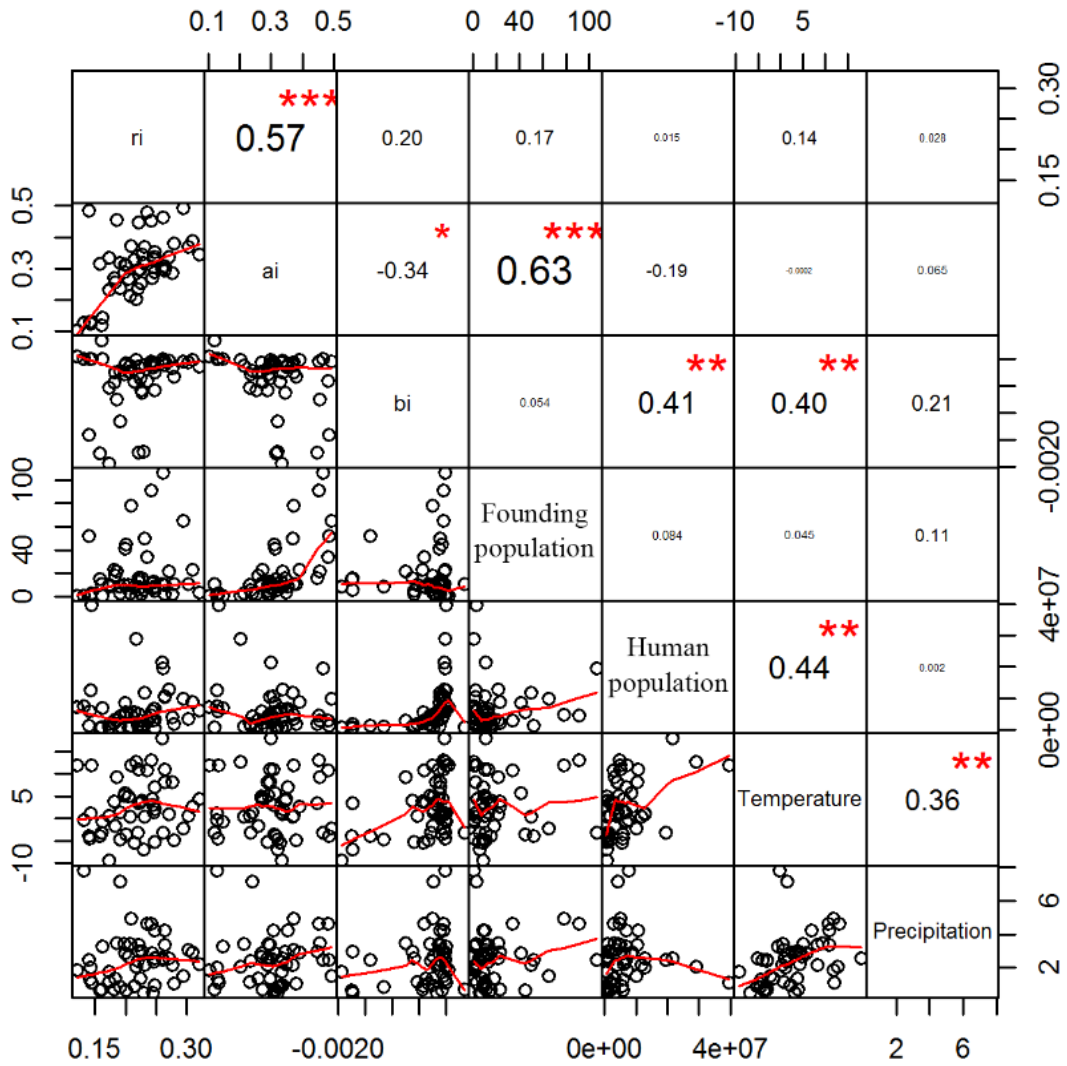


Fig. S3. Correlation of the average daily increase rate (r_i) of cumulative cases, maximum daily increase rate (a_i), and control efficiency (b_i) of COVID-19 with founding population size during the initial 7 days after the first patient, human population, and climate factors (temperature and precipitation) in the USA.

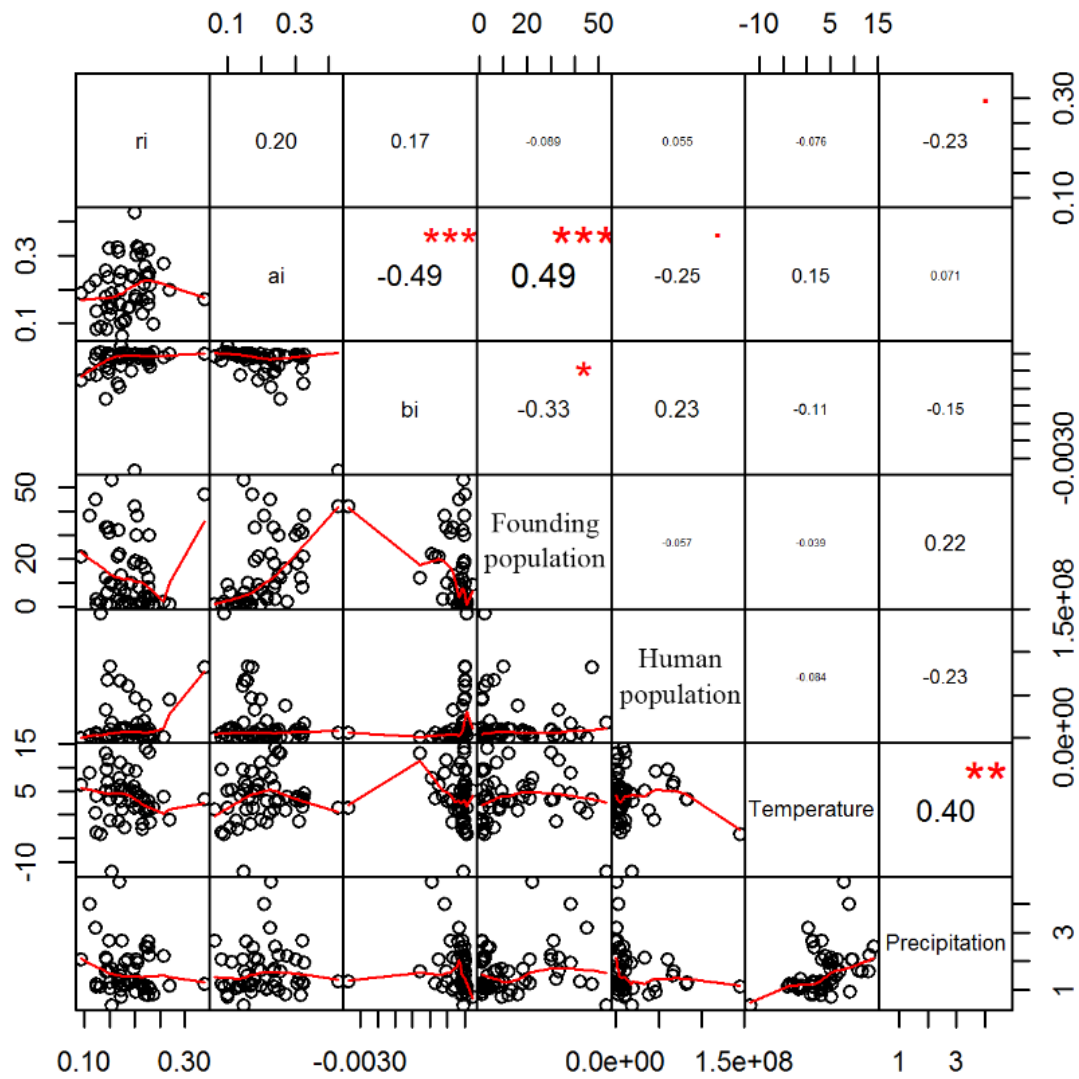


Fig. S4. Correlation the average daily increase rate (r_i) of cumulative cases, maximum daily increase rate (a_i), control efficiency (b_i) of COVID-19 with founding population size during the initial 7 days after the first patient, human population, and climate factors (temperature and precipitation) in Europe.

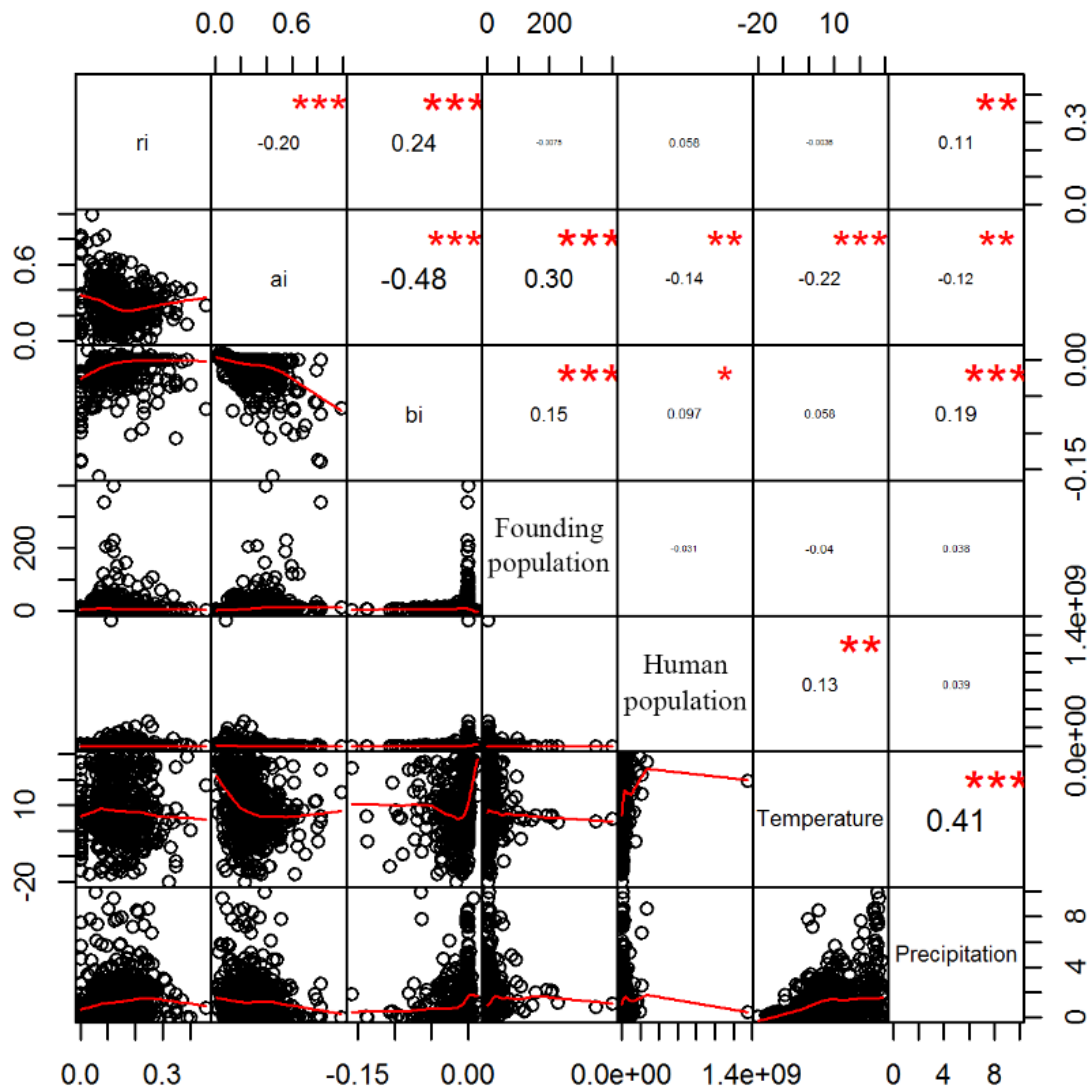


Fig. S5. Correlation of the average daily increase rate (r_i) of cumulative cases, maximum daily increase rate (a_i), control efficiency (b_i) of COVID-19 with the founding population size during the initial 7 days after the first patient, human population, and climate factors (temperature and precipitation) in the world.

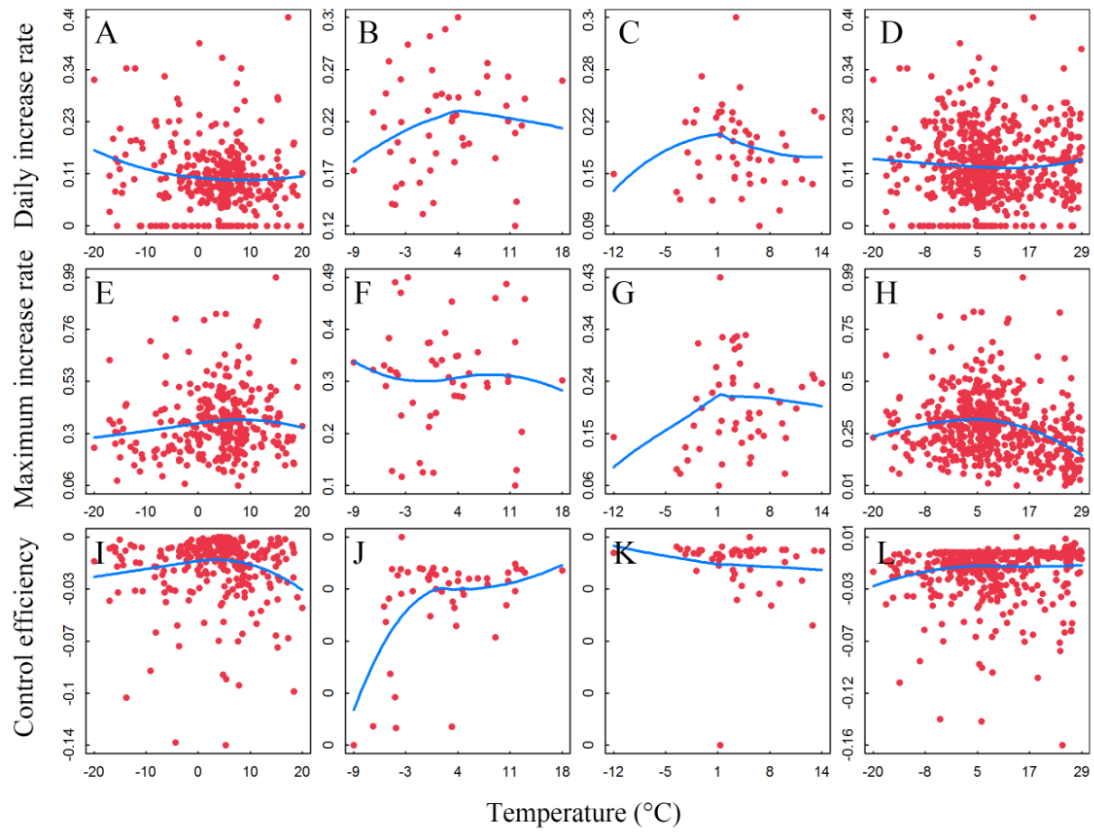


Fig. S6. Relationship of temperature with the average daily increase rate (r_i), maximum daily increase rate (a_i), control efficiency (b_i) of COVID-19 in China (A, E, I), USA (B, F, J), Europe (C, G, K), and the world (D, H, L). The blue lines indicate the loess regression with span = 1.

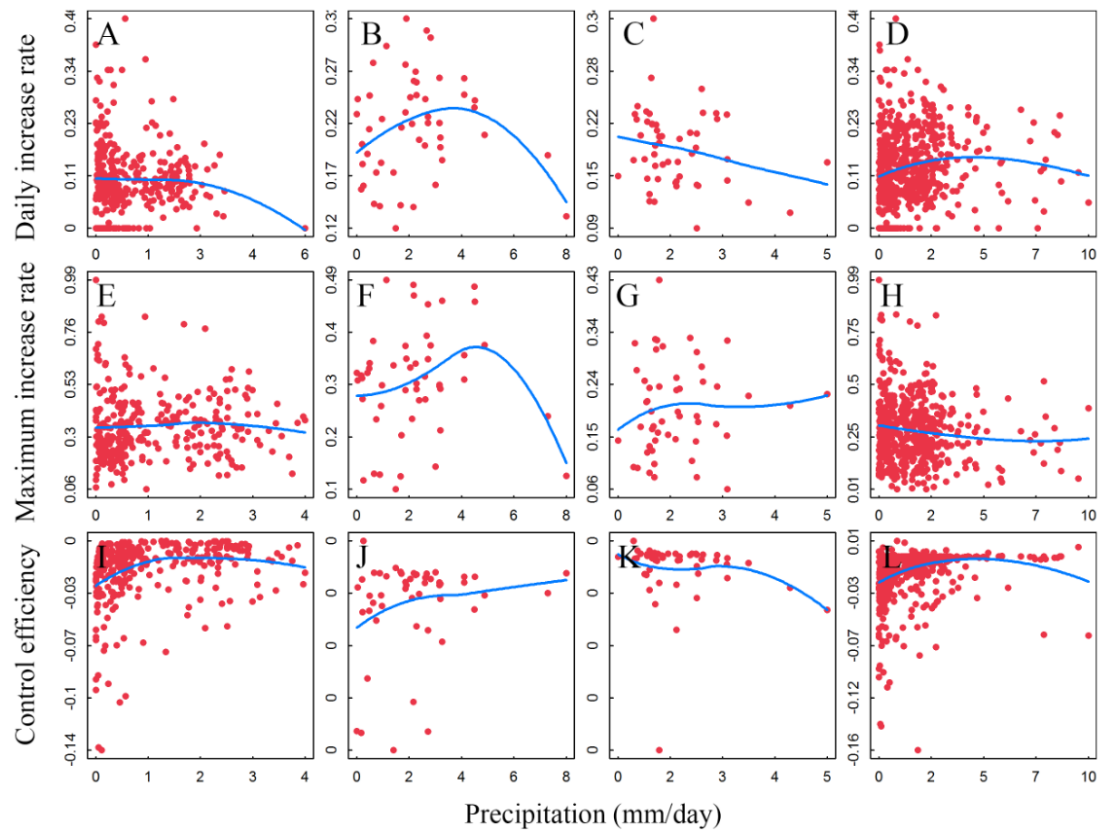


Fig. S7. Relationship of precipitation with the average daily increase rate (r_i), maximum daily increase rate (a_i), control efficiency (b_i) of COVID-19 in China (A, E, I), USA (B, F, J), Europe (C, G, K), and the world (D, H, L). The blue lines indicate loess regression with span = 1.

Table S1 Significant associations of average daily increase rate (r_i) of cumulative cases, maximum daily increase rate (a_i), control efficiency (b_i) of COVID-19 with founding population size during the initial 7 days after the first patient (F_i), human population, climate factors (temperature and precipitation), and spatial autocorrelation. Bold values indicated the coefficients represent the significant effects ($p < 0.05$). + denotes the significant effects of spatial autocorrelation or temperature ($p < 0.05$), ns denotes non-significant effects. NA denotes not available (* $p < 0.05$, ** $p < 0.01$, *** $p < 0.001$). The significant association was extracted from Table S3. Models presented here were based on the observation that human or climate variables should have significant association with the average daily increase rate (r_i), the maximum daily increase rate (a_i) or the control efficiency (b_i) in at least two repeated models from Table S3.

Cumulative cases >	Region	Transmission parameters	Founding population	Human population	Temperature	Precipitation	Spatial auto correlation	Variance explained	Sample size
0	China	Increase rate (r_i)	-1.80E-05	0.0025	***	*	***	8.48%	333
0	US	Increase rate (r_i)	0.00015	0.0052	NS	NS	NS	17.02%	51
0	Europe	Increase rate (r_i)	0.00027	0.007 *	**	NS	**	37.02%	52
0	Global	Increase rate (r_i)	-5.30E-06	0.0074 ***	**	NS	***	23.61%	578
0	China	Maximum increase rate (a_i)	0.001 ***	-0.011	NS	NS	NS	10.98%	333
0	US	Maximum increase rate (a_i)	0.0026 ***	-0.022 .	NS	NS	NS	50.91%	51

0	Europe	Maximum increase rate (a_i)	0.0035 ***	-0.00072	*	NS	NS	41.31%	52
10	Global	Maximum increase rate (a_i)	0.0011 ***	-0.0088 *	**	NS	***	27.89%	578
0	China	Control efficiency (b_i)	4.6e-05 **	0.0037 ***	***	*	*	24.39%	252
0	US	Control efficiency (b_i)	-2.70E-06	0.00028 ***	NS	NS	NS	52.14%	51
0	Europe	Control efficiency (b_i)	-8.7e-06 .	0.00011 **	NS	NS	**	54.11%	52
0	Global	Control efficiency (b_i)	8.6e-05 ***	0.0036 ***	NS	***	***	24.20%	578

Table S2 Associations of average daily increase rate (r_i) of cumulative cases, maximum daily increase rate (a_i), control efficiency (b_i), of COVID-19 with founding population size during the initial 7 days after the first patient (F_i), human population, climate factors (temperature and precipitation), and spatial autocorrelation based on analyses using Equation 2 (linear model) for locations with more than 0/10/20/30 cases. Bold values indicated the coefficients represent the significant effects ($p < 0.05$). + denotes the significant effects of spatial autocorrelation or temperature ($p < 0.05$), ns denotes non-significant effects. NA denotes not available (* $p < 0.05$, ** $p < 0.01$, * $p < 0.001$).**

Cumulative cases >	Region	Transmission parameters	Founding population	Human population	Temperature	Precipitation	Spatial auto correlation	Variance explained	Sample size
0	China	ri	-1.80E-05	0.0025	-0.0074 ***	-0.013 *	***	8.48%	333
10	China	ri	-4.70E-05	-0.0014	-0.0035 *	-0.0051	NS	6.45%	252
20	China	ri	-1.10E-05	0.0048	-0.0036 *	-0.0018	NS	7.53%	177
30	China	ri	-2.20E-06	0.0076	-0.0034 .	0.00041	NS	8.78%	134
0	USA	ri	0.00018	0.0045	0.00029	-0.0021	NS	14.76%	51
10	USA	ri	0.00018	0.0045	0.00029	-0.0021	NS	14.76%	51
20	USA	ri	0.00018	0.0045	0.00029	-0.0021	NS	14.76%	51
30	USA	ri	0.00018	0.0045	0.00029	-0.0021	NS	14.76%	51
0	Europe	ri	-0.00012	0.0062 .	-0.0066 *	-0.0091	*	23.15%	52
10	Europe	ri	-0.00012	0.0062 .	-0.0066 *	-0.0091	*	23.15%	52
20	Europe	ri	-0.00012	0.0062 .	-0.0066 *	-0.0091	*	23.15%	52
30	Europe	ri	-0.00012	0.0062 .	-0.0066 *	-0.0091	*	23.15%	52
0	Global	ri	-5.30E-06	0.0074 ***	-0.0015 **	0.0026	***	23.61%	578
10	Global	ri	-7.20E-05	0.0053 **	-0.0016 ***	0.0022	***	34.28%	467

20	Global	ri	-5.10E-05	0.0048 **	-0.0011 *	0.0024	***	43.62%	376
30	Global	ri	-6.60E-05	0.0049 **	-0.0013 **	0.0025	***	42.16%	328
0	China	ai	0.00099 ***	-0.012	0.0032	-0.019	NS	10%	333
10	China	ai	0.00092 ***	-0.008	0.0055	-0.0073	NS	11.17%	252
20	China	ai	0.00081 ***	-0.006	-0.0046	-0.018	NS	19.86%	177
30	China	ai	0.00081 ***	-0.0098	-0.011 .	-0.019	NS	21.55%	134
0	USA	ai	0.0028 ***	-0.025 .	0.0038	-0.0023	NS	45.53%	51
10	USA	ai	0.0028 ***	-0.025 .	0.0038	-0.0023	NS	45.53%	51
20	USA	ai	0.0028 ***	-0.025 .	0.0038	-0.0023	NS	45.53%	51
30	USA	ai	0.0028 ***	-0.025 .	0.0038	-0.0023	NS	45.53%	51
0	Europe	ai	0.0032 ***	-0.0014	0.0064	-0.019	NS	32.94%	52
10	Europe	ai	0.0032 ***	-0.0014	0.0064	-0.019	NS	32.94%	52
20	Europe	ai	0.0032 ***	-0.0014	0.0064	-0.019	NS	32.94%	52
30	Europe	ai	0.0032 ***	-0.0014	0.0064	-0.019	NS	32.94%	52
0	Global	ai	0.0012 ***	-0.0077 *	-0.00017	-0.00075	***	26.04%	578
10	Global	ai	0.0012 ***	-0.0088 *	-0.00047	-0.0012	***	29.54%	467
20	Global	ai	0.0011 ***	-0.0059 .	-0.0022 *	0.00034	***	38.93%	376
30	Global	ai	0.0011 ***	-0.0086 *	-0.0025 *	0.00085	***	40.65%	328
0	China	bi	8.5e-05 **	0.0094 ***	-0.00063	0.0063 ***	NS	24.79%	333
10	China	bi	5.2e-05 ***	0.0038 ***	-0.0013 ***	0.0016	**	22.25%	252
20	China	bi	3.7e-05 ***	0.0018 ***	-0.00041 *	0.0016 *	NS	24.20%	177
30	China	bi	2.6e-05 ***	0.0012 **	0.00024	0.0014 *	NS	25.15%	134
0	USA	bi	-3.50E-06	0.00029 ***	-4.60E-05	6.20E-05	*	49.06%	51
10	USA	bi	-3.50E-06	0.00029 ***	-4.60E-05	6.20E-05	*	49.06%	51
20	USA	bi	-3.50E-06	0.00029 ***	-4.60E-05	6.20E-05	*	49.06%	51
30	USA	bi	-3.50E-06	0.00029 ***	-4.60E-05	6.20E-05	*	49.06%	51

0	Europe	bi	-9.6e-06 *	9.8e-05 *	-5.5e-05 *	-4.80E-06	**	37.74%	52
10	Europe	bi	-9.6e-06 *	9.8e-05 *	-5.5e-05 *	-4.80E-06	**	37.74%	52
20	Europe	bi	-9.6e-06 *	9.8e-05 *	-5.5e-05 *	-4.80E-06	**	37.74%	52
30	Europe	bi	-9.6e-06 *	9.8e-05 *	-5.5e-05 *	-4.80E-06	**	37.74%	52
0	Global	bi	9.7e-05 ***	0.0037 ***	-6.50E-05	0.0021 ***	***	21.94%	578
10	Global	bi	5.3e-05 ***	0.0015 ***	-4.70E-05	0.00096 **	***	30.80%	467
20	Global	bi	2.8e-05 ***	0.00056 ***	2.80E-05	0.00051 ***	***	44.89%	376
30	Global	bi	1.9e-05 ***	0.00048 ***	3.80E-05	0.00028 **	***	48.38%	328

Table S3 Associations of average daily increase rate (r_i) of cumulative cases, maximum daily increase rate (a_i), control efficiency (b_i) of COVID-19 with founding population size during the initial 7 days after the first patient (F_i), human population, climate factors (temperature and precipitation), and spatial autocorrelation based on analyses using Equation 3 (non-linear model) for locations with more than 0/10/20/30 cases. Bold values indicated the coefficients represent the significant effects ($p < 0.05$). + denotes the significant effects of spatial autocorrelation or temperature ($p < 0.05$), ns denotes non-significant effects. NA denotes not available (* $p < 0.05$, ** $p < 0.01$, * $p < 0.001$).**

Cumulative cases >	Region	Transmission parameters	Founding population	Human population	Temperature	Precipitation	Spatial auto correlation	Variance explained	Sample size
0	China	ri	-1.80E-05	0.0025	***	*	***	8.48%	333
10	China	ri	-4.70E-05	-0.0014	*	NS	NS	6.45%	252
20	China	ri	-1.10E-05	0.0048	*	NS	NS	7.53%	177
30	China	ri	-2.20E-06	0.0076	NS	NS	NS	8.78%	134
0	USA	ri	0.00015	0.0052	NS	NS	NS	17.02%	51
10	USA	ri	0.00015	0.0052	NS	NS	NS	17.02%	51
20	USA	ri	0.00015	0.0052	NS	NS	NS	17.02%	51
30	USA	ri	0.00015	0.0052	NS	NS	NS	17.02%	51
0	Europe	ri	0.00027	0.007 *	**	NS	**	37.02%	52
10	Europe	ri	0.00027	0.007 *	**	NS	**	37.02%	52
20	Europe	ri	0.00027	0.007 *	**	NS	**	37.02%	52
30	Europe	ri	0.00027	0.007 *	**	NS	**	37.02%	52
0	Global	ri	-5.30E-06	0.0074 ***	**	NS	***	23.61%	578
10	Global	ri	-7.20E-05	0.0053 **	***	NS	***	34.28%	467

20	Global	ri	-5.10E-05	0.0049 **	*	NS	***	44.36%	376
30	Global	ri	-6.20E-05	0.0049 **	*	NS	***	42.36%	328
0	China	ai	0.001 ***	-0.011	NS	NS	NS	10.98%	333
10	China	ai	0.00092 ***	-0.008	NS	NS	NS	11.17%	252
20	China	ai	0.00081 ***	-0.0059	NS	NS	NS	19.88%	177
30	China	ai	0.00081 ***	-0.0098	NS	NS	NS	21.55%	134
0	USA	ai	0.0026 ***	-0.022 .	NS	NS	NS	50.91%	51
10	USA	ai	0.0026 ***	-0.022 .	NS	NS	NS	50.91%	51
20	USA	ai	0.0026 ***	-0.022 .	NS	NS	NS	50.91%	51
30	USA	ai	0.0026 ***	-0.022 .	NS	NS	NS	50.91%	51
0	Europe	ai	0.0035 ***	-0.00072	*	NS	NS	41.31%	52
10	Europe	ai	0.0035 ***	-0.00072	*	NS	NS	41.31%	52
20	Europe	ai	0.0035 ***	-0.00072	*	NS	NS	41.31%	52
30	Europe	ai	0.0035 ***	-0.00072	*	NS	NS	41.31%	52
0	Global	ai	0.0011 ***	-0.0088 *	**	NS	***	27.89%	578
10	Global	ai	0.0011 ***	-0.0094 **	**	NS	***	31.83%	467
20	Global	ai	0.0011 ***	-0.0061 .	***	NS	***	41.53%	376
30	Global	ai	0.0011 ***	-0.0087 *	**	NS	***	41.92%	328
0	China	bi	6.7e-05 *	0.0088 ***	NS	***	NS	27.87%	333
10	China	bi	4.6e-05 **	0.0037 ***	***	*	*	24.39%	252
20	China	bi	3.7e-05 ***	0.0018 ***	*	*	NS	24.20%	177
30	China	bi	2.5e-05 ***	0.0012 **	NS	*	NS	27.83%	134
0	USA	bi	-2.70E-06	0.00028 ***	NS	NS	NS	52.14%	51
10	USA	bi	-2.70E-06	0.00028 ***	NS	NS	NS	52.14%	51
20	USA	bi	-2.70E-06	0.00028 ***	NS	NS	NS	52.14%	51
30	USA	bi	-2.70E-06	0.00028 ***	NS	NS	NS	52.14%	51

0	Europe	bi	-8.7e-06 .	0.00011 **	NS	NS	**	54.11%	52
10	Europe	bi	-8.7e-06 .	0.00011 **	NS	NS	**	54.11%	52
20	Europe	bi	-8.7e-06 .	0.00011 **	NS	NS	**	54.11%	52
30	Europe	bi	-8.7e-06 .	0.00011 **	NS	NS	**	54.11%	52
0	Global	bi	8.6e-05 ***	0.0036 ***	NS	***	***	24.20%	578
10	Global	bi	4.9e-05 ***	0.0015 ***	NS	***	***	33.26%	467
20	Global	bi	2.8e-05 ***	0.00059 ***	**	***	***	48.57%	376
30	Global	bi	1.9e-05 ***	0.00048 ***	NS	*	***	48.65%	328

Table S4 Associations of the number of cumulative cases (N) of COVID-19 with founding population size during the initial 7 days after the first patient (F_i), human population, climate factors (temperature and precipitation), and spatial autocorrelation based on analyses using Equation 2 (linear model) and 3 (non-linear model) for locations with more than 0/10/20/30 cases. Bold values indicated the coefficients represent the significant effects ($p < 0.05$). + denotes the significant effects of spatial autocorrelation or temperature ($p < 0.05$), ns denotes non-significant effects. NA denotes not available (* $p < 0.05$, ** $p < 0.01$, * $p < 0.001$).**

Equation	Cumulative cases >	Region	Founding population	Human population	Temperature	Precipitation	Spatial auto correlation	Variance explained	Sample size
2 (linear)	0	China	9.6 *	420 *	-43	21	NS	3.76%	333
2 (linear)	10	China	9.9 *	650 *	-97	2.1	NS	4.51%	252
2 (linear)	20	China	10 .	970 *	-170	-18	NS	5.67%	177
2 (linear)	30	China	11	1300 *	-280	-69	NS	6.51%	134
2 (linear)	0	US	350 ***	7400 ***	-130	-570	NS	48.72%	51
2 (linear)	10	US	350 ***	7400 ***	-130	-570	NS	48.72%	51
2 (linear)	20	US	350 ***	7400 ***	-130	-570	NS	48.72%	51
2 (linear)	30	US	350 ***	7400 ***	-130	-570	NS	48.72%	51

2 (linear)	0	Europe	-400 .	8100 ***	-190	620	*	47.28%	52
2 (linear)	10	Europe	-400 .	8100 ***	-190	620	*	47.28%	52
2 (linear)	20	Europe	-400 .	8100 ***	-190	620	*	47.28%	52
2 (linear)	30	Europe	-400 .	8100 ***	-190	620	*	47.28%	52
2 (linear)	0	Global	29 *	1700 ***	16	440	***	14.08%	578
2 (linear)	10	Global	33 *	2100 ***	2.3	440	***	14.87%	467
2 (linear)	20	Global	35 *	2300 ***	-13	390	**	15.39%	376
2 (linear)	30	Global	38 *	2600 ***	-62	520	**	15.52%	328
3 (non-linear)	0	China	9.6 *	420 *	NS	NS	NS	3.76%	333
3 (non-linear)	10	China	9.9 *	650 *	NS	NS	NS	4.51%	252
3 (non-linear)	20	China	9.8 .	970 *	NS	NS	NS	5.85%	177
3 (non-linear)	30	China	9.1	1300 *	NS	NS	NS	7.83%	134
3 (non-linear)	0	US	350 ***	7400 ***	NS	NS	NS	48.72%	51
3 (non-linear)	10	US	350 ***	7400 ***	NS	NS	NS	48.72%	51

3 (non-linear)	20	US	350 ***	7400 ***	NS	NS	NS	48.72%	51
3 (non-linear)	30	US	350 ***	7400 ***	NS	NS	NS	48.72%	51
3 (non-linear)	0	Europe	-400 .	8100 ***	NS	NS	*	47.28%	52
3 (non-linear)	10	Europe	-400 .	8100 ***	NS	NS	*	47.28%	52
3 (non-linear)	20	Europe	-400 .	8100 ***	NS	NS	*	47.28%	52
3 (non-linear)	30	Europe	-400 .	8100 ***	NS	NS	*	47.28%	52
3 (non-linear)	0	Global	29 *	1600 ***	NS	NS	***	14.29%	578
3 (non-linear)	10	Global	31 *	2000 ***	NS	NS	***	15.20%	467
3 (non-linear)	20	Global	34 *	2300 ***	NS	NS	**	15.82%	376
3 (non-linear)	30	Global	37 *	2600 ***	NS	NS	**	15.87%	328

