

**Supplementary Table S1.** Characteristics of the countries included in the analysis\*

Country	Total population	Date of first case reported	Total confirmed cases	Total death	Total recovered	Test†	CRF	dCFR	Difference	Critical care beds per 100 000 hab	Proportion of habitants over 65 year	HCW (MDs) per 1 000 hab
Afghanistan	37172386	24 February	2171	64	260	0	2.9	6.3	3.4	0.5	3	0.3
Albania	2878249	8 March	773	31	470	0	4.0	5.6	1.6	NA	14	1.2
Algeria	42228429	25 February	4006	450	1779	0	11.2	18.1	6.9	1.9	6	1.8
Andorra	77006	02 March	745	42	468	0	5.6	6.5	0.9	7.1	NA	3.3
Argentina	44494502	03 March	4428	218	1256	0	4.9	7.8	2.9	18.6	11	4.0
Armenia	2951776	01 March	2066	32	929	0	1.5	2.5	0.9	4.2	11	2.9
Australia	25 203 198	26 March	6766	93	5742	1	1.4	1.5	0.1	8	16	3.6
Austria	8 840 521	25 February	15452	584	12907	1	3.8	4.3	0.5	21.8	19	5.1
Azerbaijan	9939800	29 February	1804	24	1325	1	1.3	1.9	0.5	4.7	6	3.4
Bahrain	1569439	24 February	3040	8	1500	1	0.3	0.4	0.2	2	2	0.9
Bangladesh	161356039	08 March	7667	168	160	0	2.2	5.7	3.5	0.7	5	0.5
Belarus	9483499	28 February	14027	89	2386	1	0.6	1.5	0.8	11	15	4.1
Belgium	11 539 328	04 February	48519	7594	11576	0	15.7	21.3	5.7	15.9	19	3.3
Bolivia	11,648,426	12 March	1110	59	117	0	5.3	10.4	5.1	NA	7	0.5
Bosnia and Herzegovina	3323929	05 March	1757	69	727	0	3.9	5.8	1.9	3.5	16	2.0
Brazil	211 049 527	25 February	87187	6006	35935	0	6.9	15.2	8.3	25	9	2.1
Bulgaria	7 025 037	08 March	1506	66	266	0	4.4	7.2	2.8	12.2	21	4.0
Burkina Faso	19751535	11 March	645	43	506	0	6.7	8.1	1.5	0.4	2	0.1
Cameroon	25216237	06 March	1832	61	934	0	3.3	5.6	2.3	1.3	3	0.1
Canada	37 411 047	27 January	54457	3310	21424	1	6.1	9.6	3.6	9.5	17	2.6
Chile	18729160	03 March	16023	227	8580	0	1.4	2.4	0.9	6.7	12	1.1
China	1 433 783 686	17 November*	82919	4633	77677	0	5.6	5.6	0.1	3.6	11	1.8
Colombia	49648685	06 March	6507	293	1439	0	4.5	7.9	3.4	11	8	2.1

Congo	89114668	10 March	572	31	73	0	5.4	10.0	6.6	NA	3	0.1
Costa Rica	4999441	08 March	719	6	338	0	0.8	1.0	0.2	1.2	10	1.1
Cote d'Ivoire	25069229	12 March	1275	14	574	0	1.1	1.8	0.7	0.4	3	0.2
Croatia	4 087 843	25 February	2076	69	1348	0	3.3	4.0	0.7	14.7	20	3.0
Cuba	11338138	13 March	1501	61	681	0	4.1	6.3	2.2	5.2	15	8.2
Cyprus	1189265	09 March	850	15	296	1	1.8	2.2	0.4	11.4	14	2.0
Czechia	10 629 928	01 March	7682	236	3314	1	3.1	3.6	0.5	11.6	19	4.3
Denmark	5 793 636	27 February	9158	452	6545	1	4.9	6.6	1.6	6.7	20	4.5
Diamond Princess	3800	2 February	712	13	645	1	1.8	1.8	0.0	NA	NA	NA
Djibouti	958920	14 March	1089	2	642	1	0.2	0.3	0.1	NA	5	0.2
Dominican Republic	10627165	02 March	6972	301	1301	0	4.3	6.9	2.6	1.6	7	1.6
Ecuador	17084357	29 February	24934	900	1558	0	3.6	7.3	3.7	6.7	7	2.0
Egypt	98423595	14 February	5537	392	1381	0	7.1	12.6	5.5	1.6	5	0.8
Estonia	1 321 977	27 February	1689	52	249	1	3.1	3.7	0.6	14.6	20	3.5
Finland	5 515 525	29 January	4995	211	3000	1	4.2	5.9	1.7	6.1	22	3.8
France	66 977 107	24 January	175234	24376	49476	0	13.9	18.1	4.2	11.6	20	3.2
Georgia	#####	26 February	539	6	184	0	1.1	1.7	0.6	NA	15	4.3
Germany	82 905 782	28 January	163009	6623	123500	1	4.1	5.0	0.9	29.2	21	4.2
Ghana	10 473 455	26 February	2074	17	212	0	0.8	1.8	1.0	6	3	0.2
Greece	10 731 726	26 February	2591	140	1374	0	5.4	6.5	1.1	6	22	4.6
Guatemala	17864383	13 March	599	16	66	0	2.7	5.5	2.8	NA	5	0.9
Guinea	13,075,037	13 March	1495	7	329	0	0.5	1.1	0.6	NA	3	0.1
Honduras	9,880,507	10 March	771	71	79	0	9.2	15.3	6.1	NA	5	0.6
Hong kong	7 451 000	23 January	1037	4	846	1	0.4	0.4	0.0	7.1	17	1.3
Hungary	9 775 564	04 March	2775	312	581	0	11.2	17.1	5.9	13.8	19	3.2
Iceland	339 031	24 March	1797	10	1670	1	0.6	0.6	0.1	9.1	15	4.0

India	1352617328	30 January	34863	1154	9068	0	3.3	6.6	3.3	2.3	6	0.8
Indonesia	267663435	02 March	10118	792	1522	0	7.8	12.8	4.9	2.7	6	0.4
Iran	82 913 906	19 February	94640	6028	75103	0	6.4	7.9	1.5	4.6	6	1.1
Iraq	38433600	24 February	2085	93	1375	0	4.5	6.4	1.9	1.4	3	0.8
Ireland	4867309	01 March	20612	1232	13386	0	6.0	8.9	2.9	6.5	14	3.1
Israel	8 519 377	21 February	15946	222	8561	1	1.4	1.8	0.4	3.1	12	3.2
Italy	60 421 760	29 January	205463	27967	75945	0	13.6	16.7	3.1	12.5	23	4,1
Japan	126 529 100	16 January	14088	430	2460	0	3.1	4.4	1.4	7.3	28	2.4
Kazakhstan	18272430	14 March	3402	25	866	1	0.7	1.4	0.7	21.3	7	3.3
Korea, South	51 225 308	20 January	10774	248	9072	1	2.3	2.4	0.1	10.6	14	2.4
Kosovo	1,810,366	13 March	799	22	249	0	2.8	5.4	2.6	NA	NA	NA
Kuwait	4137309	24 March	4024	26	1539	1	0.6	1.3	0.7	2	3	2.6
Kyrgyzstan	6507397	18 March	746	8	462	0	1.1	1.6	0.5	NA	4	2.0
Latvia	1 927 174	02 March	858	15	348	1	1.7	2.2	0.5	9.7	20	3.2
Lebanon	6848925	21 February	725	24	150	0	3.3	3.8	0.5	2.9	7	2.3
Lithuania	2 801 543	28 February	1385	45	589	1	3.2	3.8	0.6	15.5	20	4.3
Luxembourg	607950	01 March	3784	90	3213	1	2.4	2.7	0.4	24.8	14	3.0
Malaysia	31 949 777	25 January	6002	102	4171	0	1.7	2.1	0.4	3.4	7	1.5
Mexico	126190788	28 February	19224	1859	11423	0	9.7	20.9	11.2	2	7	2.2
Moldova	2706049	07 March	3897	116	1182	0	3.0	4.9	1.9	5.8	11	3.2
Morocco	36029138	02 March	4423	170	984	0	3.8	6.2	2.3	1.1	7	0.7
Netherlands	17 097 130	27 February	39316	4795	0	0	12.2	16.0	3.8	6.4	19	3.5
New Zealand	4841000	28 February	1479	19	1252	1	1.3	1.5	0.2	2.8	16	3.0
Niger	22442948	19 March	719	32	452	0	4.5	5.8	1.3	0.3	3	0.4
Nigeria	204630242	27 February	1932	58	319	0	3.0	7.9	4.9	NA	3	0.4
North Macedonia	2082958	26 February	1465	77	738	0	5.3	7.2	2.0	4.4	14	2.9
Norway	5 378 857	26 February	7738	210	32	1	2.7	3.2	0.4	8	17	4.6

Oman	4829483	24 February	2348	11	495	0	0.5	0.9	0.4	14.6	2	2.0
Pakistan	212215030	26 February	16817	385	4315	0	2.3	4.5	2.2	1.5	4	1.0
Panama	4176873	10 March	6532	188	576	0	2.9	4.5	1.7	9.5	8	1.6
Peru	31989256	07 March	36976	1051	10405	0	2.8	6.5	3.7	1.5	8	1.3
Philippines	106651922	30 January	8488	568	1043	0	6.7	9.8	3.1	2.2	5	1.3
Poland	37 974 750	05 March	12877	644	3236	0	5.0	7.5	2.5	6.9	18	2.4
Portugal	10 283 822	02 March	25045	989	1519	1	3.9	5.3	1.3	4.2	22	3.3
Qatar	2781677	29 February	13409	10	1372	0	0.1	0.2	0.1	1.2	1	7.7
Romania	19 466 145	26 February	12240	717	4017	0	5.9	8.8	2.9	21.4	18	2.3
Russia	144478050	31 January	106498	1073	11619	1	1.0	2.3	1.3	8.2	15	4.0
San Marino	33,562	27 February	569	41	78	0	7.2	9.6	2.2	NA	NA	5.1
Saudi Arabia	33699947	02 March	22753	162	3163	0	0.7	1.6	0.9	22.8	3	2.4
Senegal	16296364	16 March	933	9	334	0	1.0	2.1	1.2	NA	3	0.1
Serbia	6 982 604	06 March	9009	179	1343	0	2.0	3.4	1.4	2.4	18	3.1
Singapore	5 804 337	23 January	16169	15	1244	1	0.1	0.2	0.1	11.4	11	2.3
Slovakia	5 446 771	06 March	1396	23	524	1	1.6	2.2	0.6	9.2	16	2.5
Slovenia	2 073 894	04 March	1429	91	233	1	6.4	7.4	1.1	6.4	20	3.0
Somalia	11031386	16 March	601	28	31	0	4.7	12.5	7.8	NA	3	0.1
South Africa	57779622	05 March	5647	103	2073	0	1.8	3.2	1.4	8.9	5	0.9
Spain	46 736 776	31 January	213435	24543	112050	0	11.5	13.7	2.2	9.7	19	4.1
Sri Lanka	20,359,439	27 January	663	7	154	0	1.1	2.2	1.1	NA	10	0.7
Sweden	10 175 214	31 January	21092	2586	1005	0	12.3	18.9	6.6	5.8	20	5.4
Switzerland	8 591 365	25 February	29586	1737	23400	0	5.9	6.8	0.9	11	19	4.2
Thailand	69428524	08 January	2954	54	2684	0	1.8	2.1	0.3	10.4	12	0.8
Tunisia	11565204	02 March	994	41	305	0	4.1	5.2	1.1	2.3	8	1.3
Turkey	82319724	11 March	120204	3174	48886	0	2.6	4.0	1.3	46	8	1.8
Ukraine	44622516	03 March	10406	261	1238	0	2.5	4.8	2.3	8.8	16	3.0

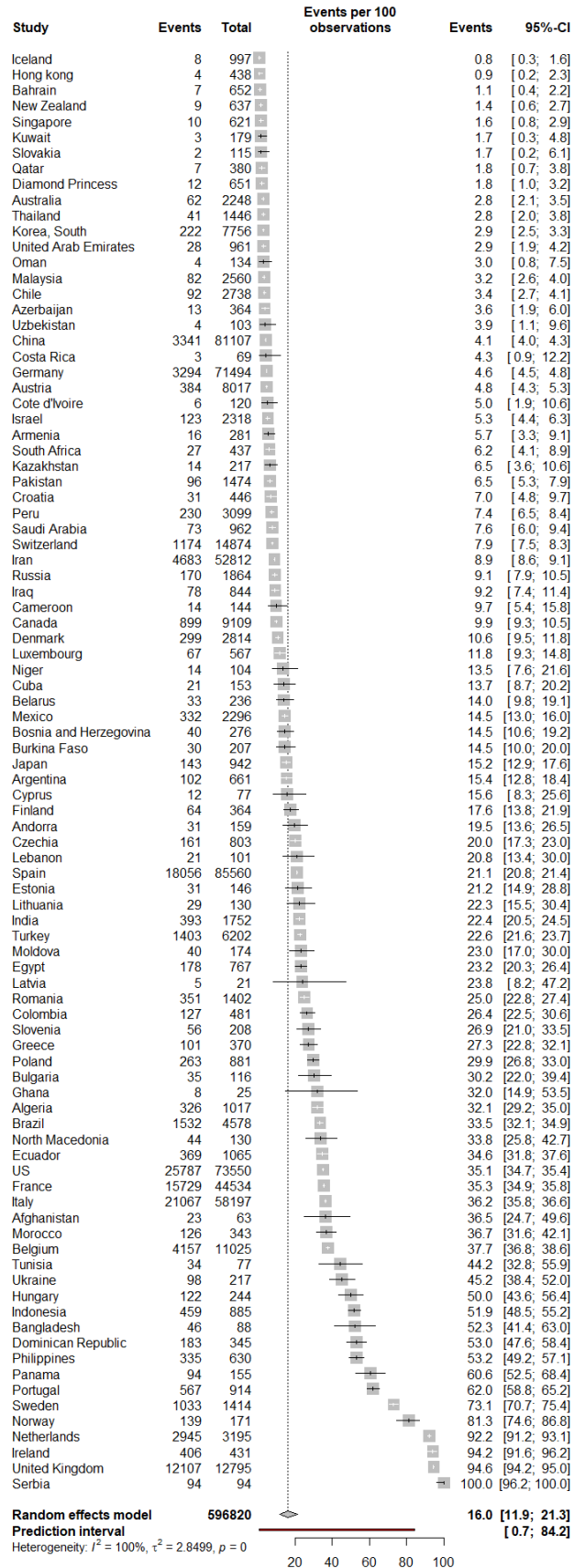
United Arab Emirates	9630959	29 January	12481	105	2429	1	0.8	1.5	0.7	1.2	1	2.4
United Kingdom	67 530 172	31 January	171253	26771	0	0	15.6	24.0	8.4	6.6	18.5	2.8
Uruguay	3,449,285	13 March	643	17	417	0	2.6	3.4	0.8	NA	15	3.7
United States	329 064 917	20 January	1069424	62996	153947	0	5.9	8.9	3.0	34.7	15.4	2.6
Uzbekistan	32955400	16 March	2039	9	1133	0	0.4	0.7	0.2	4	4	2.4

\*Include also the Passenger from the Princess Diamond cruise-ship.

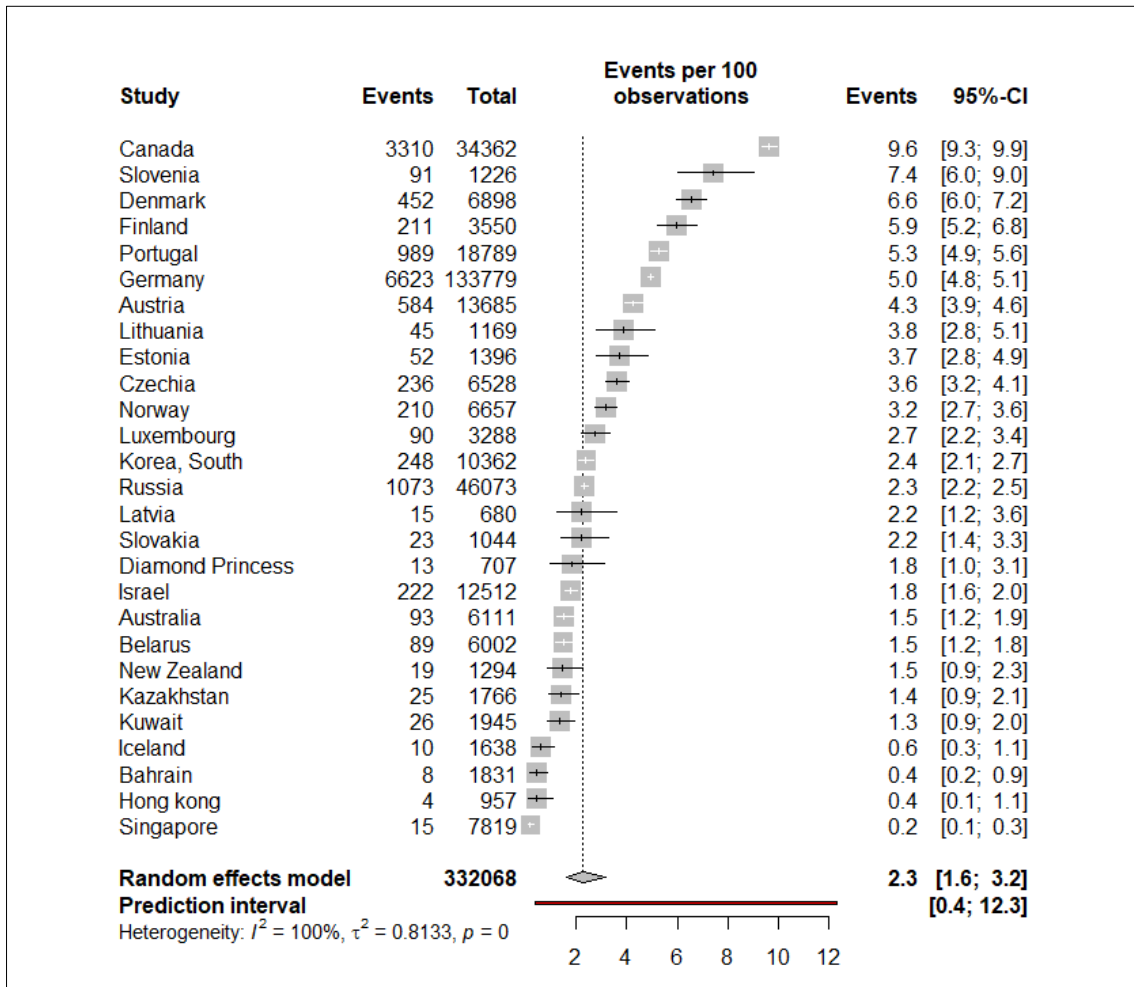
†Countries that have more than 10 tests performed per 1,000 habitants and less than 10% of positivity rate (1= Yes; 0= No)

CFR= case fatality rate; dCFR= delay adjusted case fatality rate.

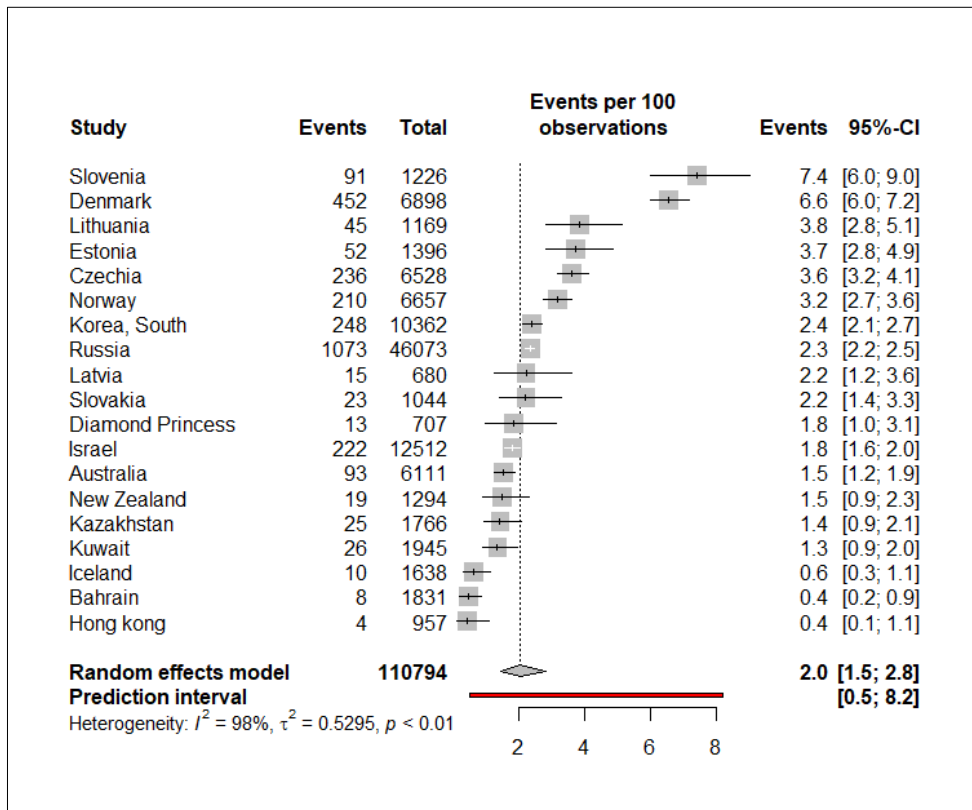
Supplementary figure S1. Meta-analysis of recovery CFR across countries



**Supplementary Figure S2.** Meta-analysis of the delay adjusted CFR across countries with high testing coverage and low positivity rate



**Supplementary Figure S2.** Meta-analysis of the delay adjusted CFR across countries with high testing coverage and low positivity rate (sensitivity analysis)\*



\*Includes countries with a positivity rate lower than 5%