

1 **Supplementary Table 1: Matched Healthy Controls Characteristics**

2 Abbreviations: PEMC: pre-existing medical conditions

ID	Gender	Age	PEMC	PEMC Details
7062	m	19	no	
7263	m	19	no	
6998	m	39	no	
7100	m	39	no	
7262	m	41	no	
7043	m	42	no	
7286	m	45	yes	Hypertension
7542	m	45	no	
6992	m	47	yes	Hypertension
7248	m	47	yes	Asthma
7059	m	48	no	
7268	m	48	no	
7051	m	51	no	
7211	m	51	no	
7553	m	51	no	
7578	m	51	no	
7278	m	53	yes	Hypothyroidism
7254	m	54	no	
7007	m	56	no	
7050	m	56	no	
7055	m	56	no	
7126	m	56	yes	Hypertension, hypercholesterolemia
7136	m	56	no	
7252	m	56	yes	Hypertension, hypothyroidism
7270	m	56	no	
7288	m	56	no	
7557	m	56	yes	Asthma
7027	m	57	yes	Hypertension
7057	m	57	no	
7061	m	57	yes	Hypertension, hypothyroidism
7094	m	57	no	
7117	m	58	no	
7118	m	58	yes	Hypertension
7044	m	59	yes	Hypercholesterolemia, glaukoma
7096	m	59	no	
7008	m	60	no	
7028	m	60	yes	Hypertension
7099	m	60	yes	Hypercholesterolemia
7026	m	61	no	
7016	m	62	no	
7267	m	62	no	
7213	m	63	no	
7624	m	63	yes	Prostatahyperplasia
7078	m	65	no	
7180	m	65	no	
7013	m	67	yes	Hypertension
7032	m	68	yes	Hypertension
7284	m	69	no	
7185	f	47	no	
7433	f	47	no	
7562	f	47	no	
7547	f	48	no	
6987	f	56	yes	Hypertension

7049	f	56	no	
7095	f	56	no	
7004	f	59	no	
7002	f	60	no	
7227	f	61	yes	Hypertension
7246	f	62	yes	Hypertension, hypothyroidism
7189	f	69	no	

4 **Supplementary Table 2: Antibodies and Reagents**

Total Count Assay: Antibodies and Reagents					
Fluorochrome	Antigen	Cat-No	Lot-No	Clone	Dilution
APC	CD3	555335	8316946	UCHT1	1:200
APC-H7	CD8	641400	9225077	SK1	1:200
APC-R700	CD127	565185	9220640	HIL-7R-M21	1:100
BV421	CD25	562442	9095648	M-A251	1:100
BV510	Vg9	744035	9086901	B3	1:200
BV605	CD20	747736	9308431	2H7	1:200
FITC	CD4	345768	9008510	SK3	1:200
PE	TCRgd	333141	9191485	11F2	1:200
PE	CD19	555413	8235921	HIB19	1:50
PE-Cy7	CD56	335826	9196215	NCAM16.2	1:100
PerCP	CD45	345809	9007823	2D1	1:200
BD FACS-Lysing Solution		349202	9141933		
BD Trucount™ Tubes		340334	19207		
Memory Marker Assay: Antibodies and Reagents					
APC	CD3	555335	8316946	UCHT1	1:200
APC-H7	CD8	641400	9225077	SK1	1:200
APC-R700	CD127	565185	9220640	HIL-7R-M21	1:100
BV421	CD25	562442	9095648	M-A251	1:100
BV510	CD45RA	563031	9014627	HI100	1:200
BV605	CD62L	562719	8173613	DREG-56	1:100
FITC	CD4	345768	9008510	SK3	1:200
PE	TCRgd	333141	9191485	11F2	1:200
PE	CD19	555413	8235921	HIB19	1:50
PE-Cy7	CD56	335826	9196215	NCAM16.2	1:100
PerCP	ViaProbe	555816	9052709		1:10
Ammonium Chloride Lysis		House made			0,83%

19 **Figure legends**

20 Supplementary Figure 1: Lymphopenia in COVID-19 patients is inversely correlated with
21 disease severity. Lines represent median. Statistical analysis was performed by Mann-
22 Whitney U-test or Student's t test where applicable. * $p < 0.05$, **** $p < 0.0001$; HC: Healthy
23 Control. MD: Mild Disease; SD: Severe Disease.

24 Supplementary Figure 2: Gating strategy

25 (A) Gating strategy for analysis of total cell counts. (B) Gating strategy for analysis of
26 memory markers. Arrows indicate gating hierarchy. Antibody specifications are listed in
27 Supplementary Table 2.

28 Supplementary Figure 3: Mild COVID-19 disease is paralleled by increased absolute counts
29 of effector and memory T cells.

30 (A) Gated on $CD4_{conv}$. (B) Gated on $CD8^+$ T cells. Lines represent median. Statistical
31 analysis was performed by Mann-Whitney U-test or Student's t test where applicable. * $p <$
32 0.05 , ** $p < 0.01$, *** $p < 0.001$, **** $p < 0.0001$; HC: Healthy Control. MD: Mild Disease;
33 SD: Severe Disease.

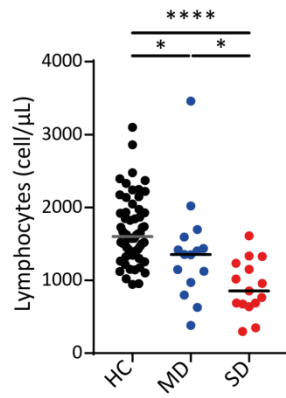
34 Supplementary Figure 4: Longitudinal distribution of $\gamma\delta$ T cells memory markers in
35 convalescing and non-convalescing patients.

36 Y axis displays the percentage of all $\gamma\delta$ T cells; Blue diamonds represent mild disease and red
37 diamonds severe disease patients upon admission. ns: not significant.

38

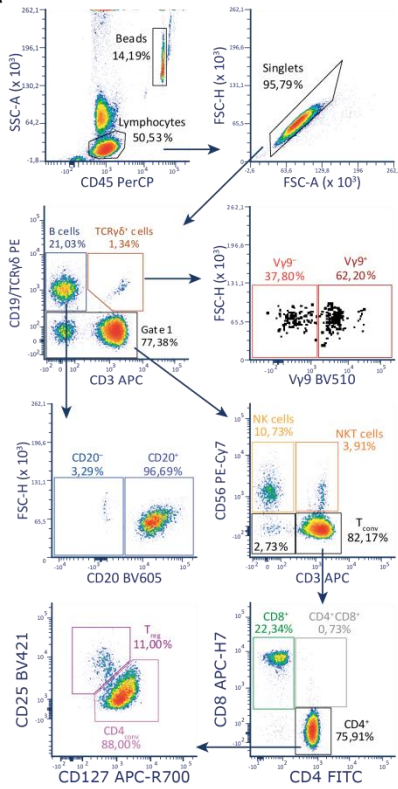
39 Supplementary Figures:

Sup. Figure 1



Sup. Figure 2

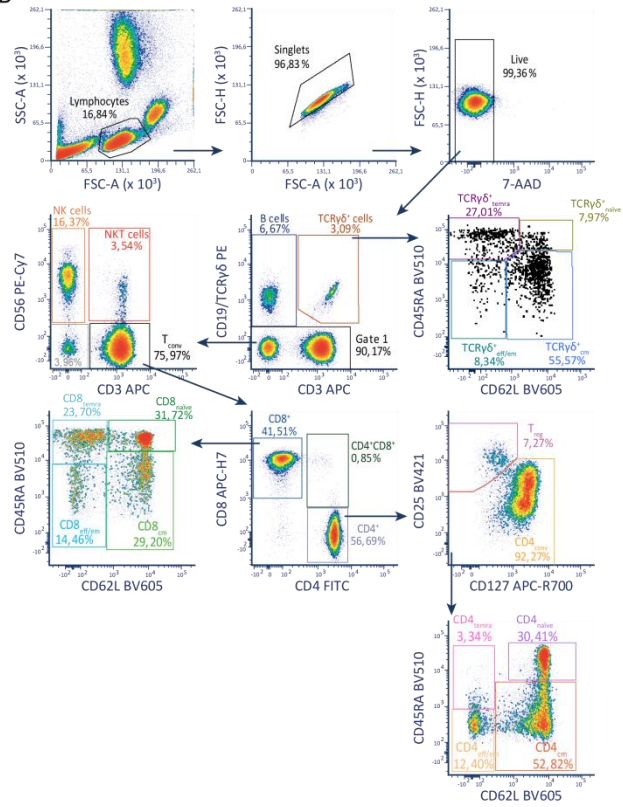
A



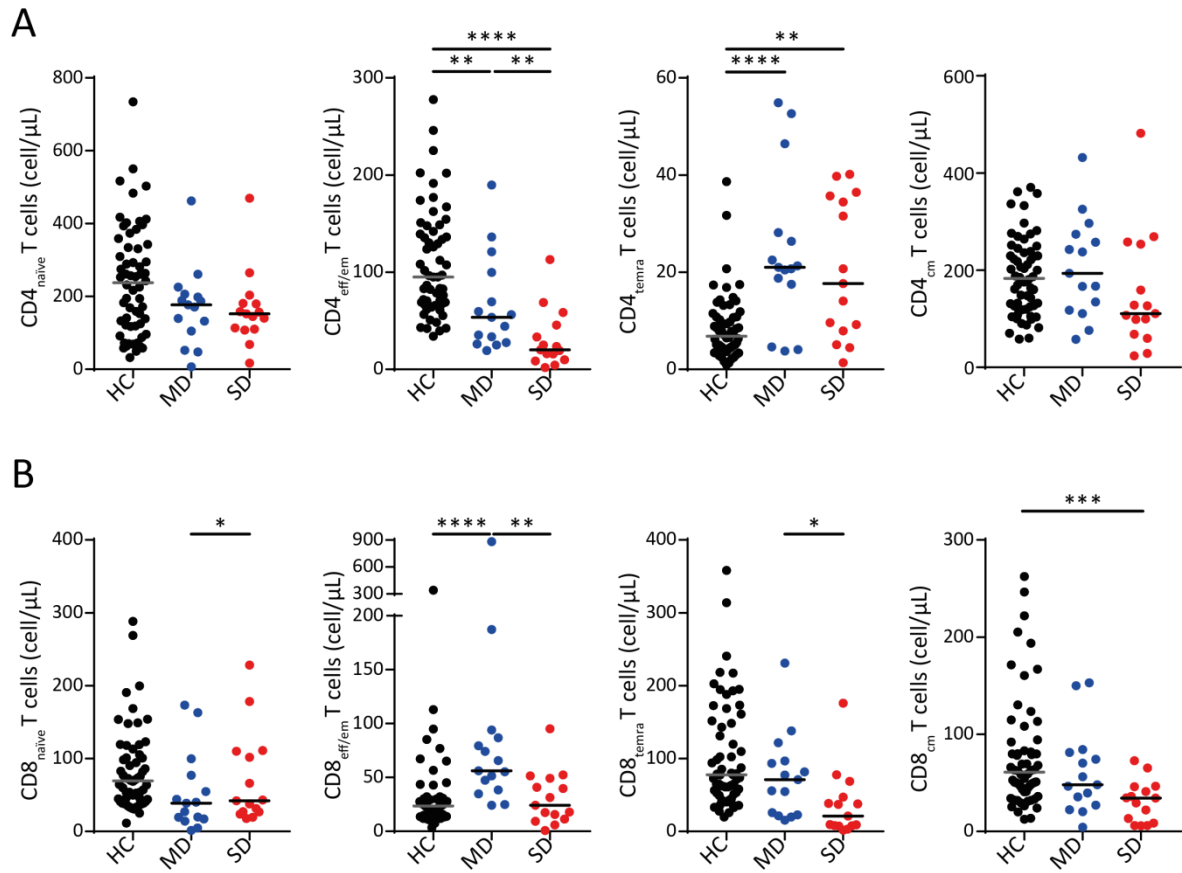
41

42

B



Sup. Figure 3



Sup. Figure 4

