

## **SUPPLEMENTARY DATA**

### **Modelling the evolution of COVID-19 in high-incidence European countries and regions: estimated number of infections and impact of past and future intervention measures**

Juan Fernández-Recio

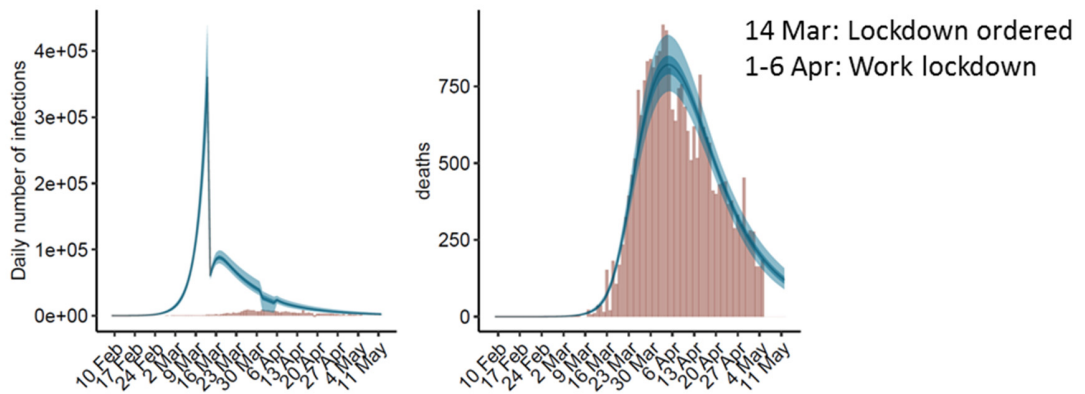
Instituto de Ciencias de la Vid y del Vino (ICVV), CSIC - Universidad de La Rioja  
- Gobierno de La Rioja, Ctra. Burgos Km. 6, 26007 Logroño, Spain.

Correspondance to: Juan Fernández-Recio ([juan.fernandezrecio@icvv.es](mailto:juan.fernandezrecio@icvv.es)). Tel: +34 941894980. Fax: +34 941899728

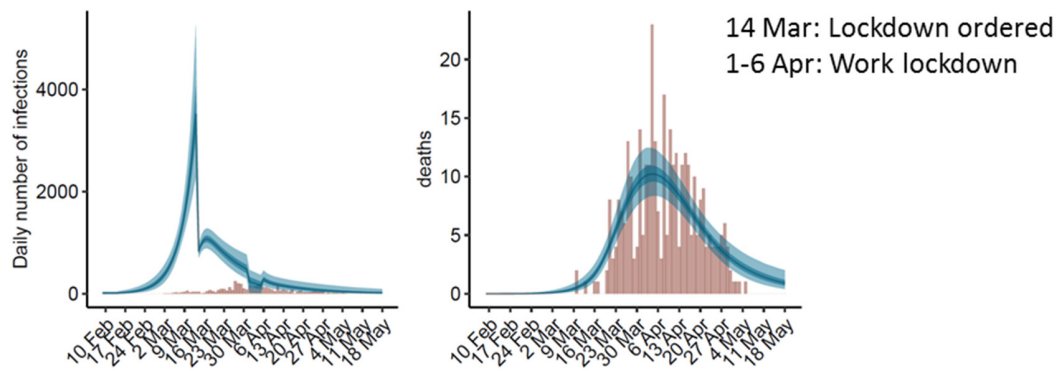
**Supplemental Table 1.** Parameters (reproduction number and initial infections) obtained by using additional interventions in the modeling

<b>Country / region</b>	<b>Mean <math>R_0</math> [95% credible interval]</b>	<b>Interventions</b>	<b>Mean <math>R_t</math> after intervention [95% credible interval]</b>	<b>Estimated infections in first 6 days [95% credible interval]</b>
Spain	4.80 [4.15-5.51]	14 Mar 1-6 Apr	0.61 [0.53-0.70] 0.46 [0.10-0.62]	401 [154-852]
La Rioja	3.22 [2.38-4.37]	14 Mar 1-6 Apr	0.63 [0.47-0.80] 0.33 [0.02-0.62]	78 [9-249]
Iceland	1.82 [1.17-2.54]	24 Mar 3 Apr	1.13 [0.67-1.62] 0.38 [0.31-0.45]	92 [8-385]

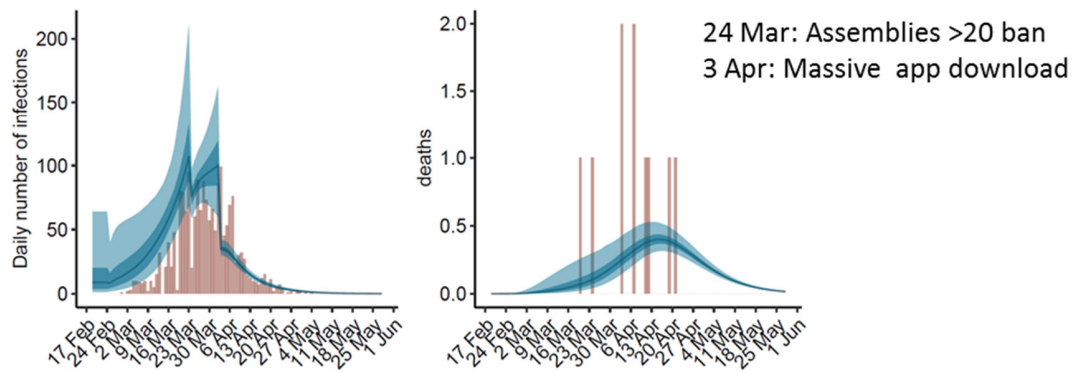
## Spain



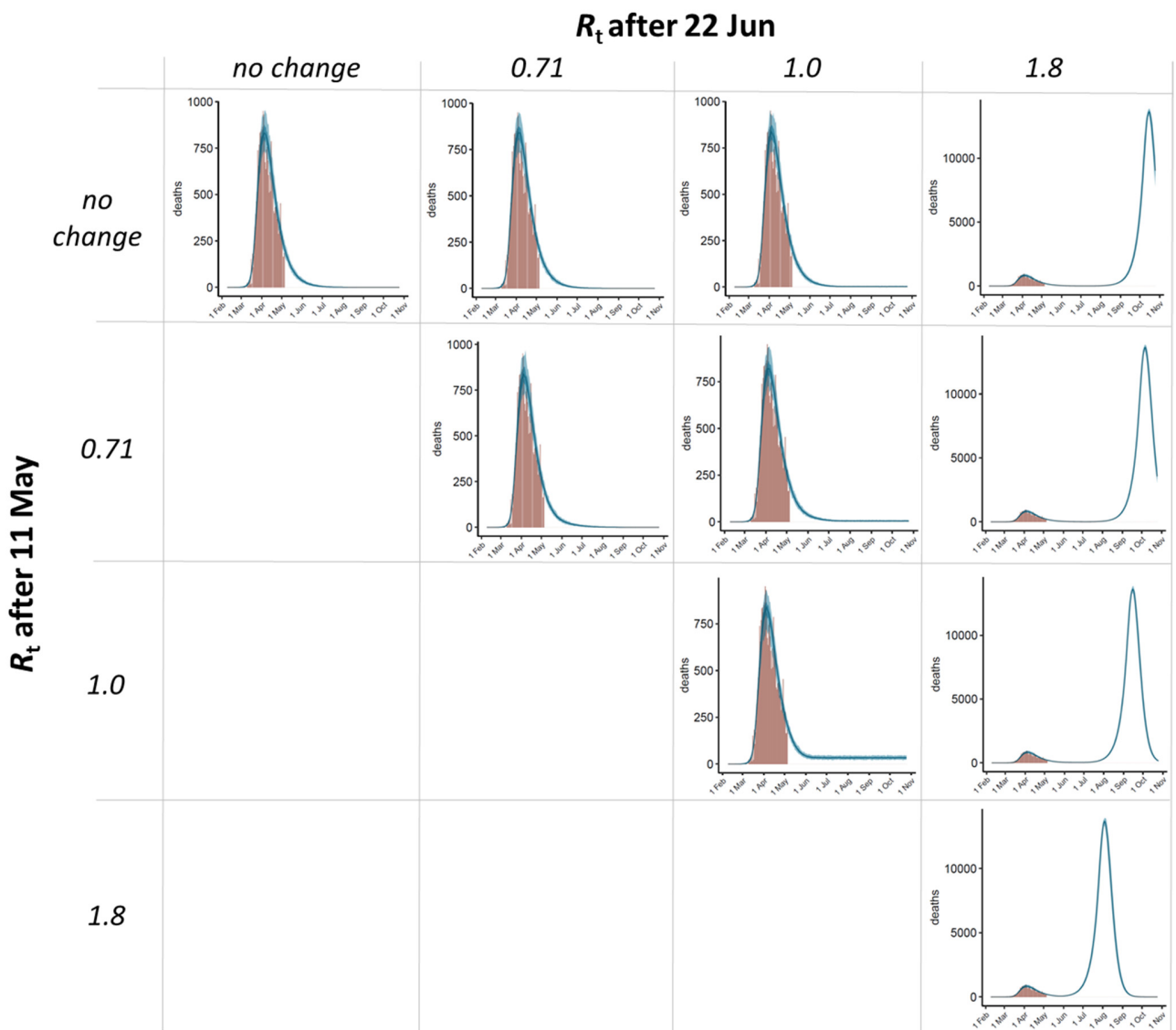
## La Rioja



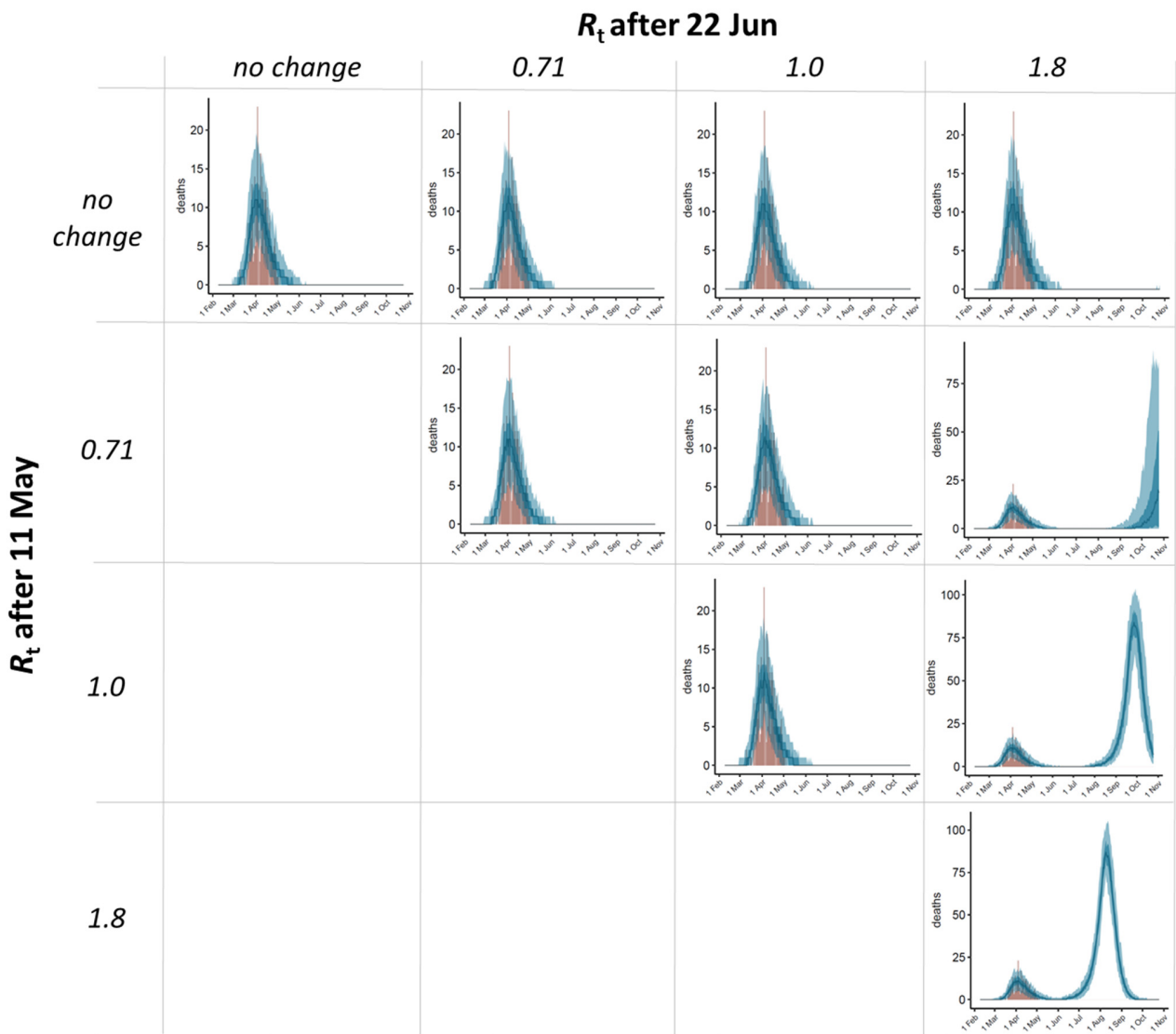
## Iceland



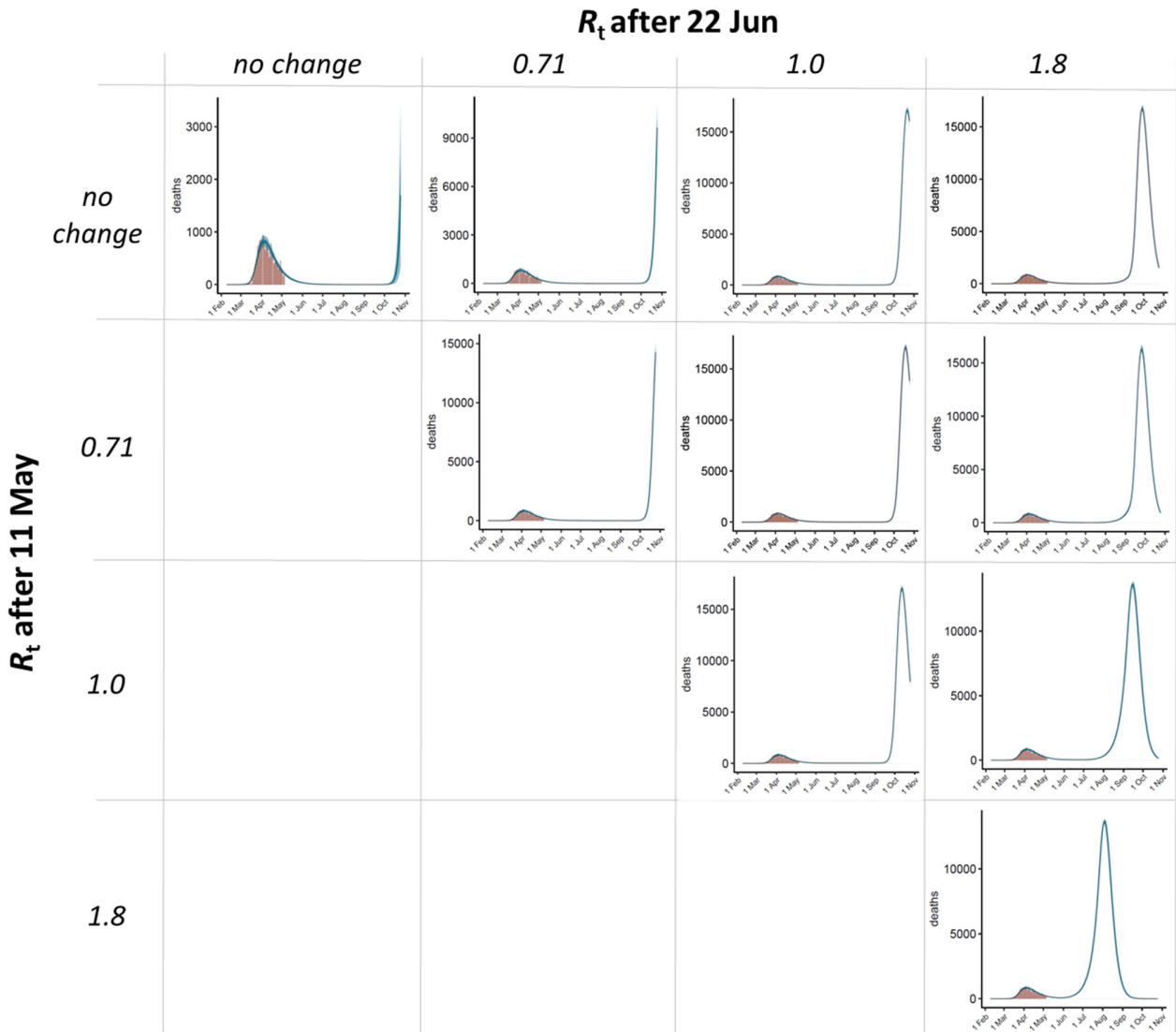
**Supplemental Figure 1.** Estimates of infections and deaths obtained by using additional interventions in the model (Table S1).



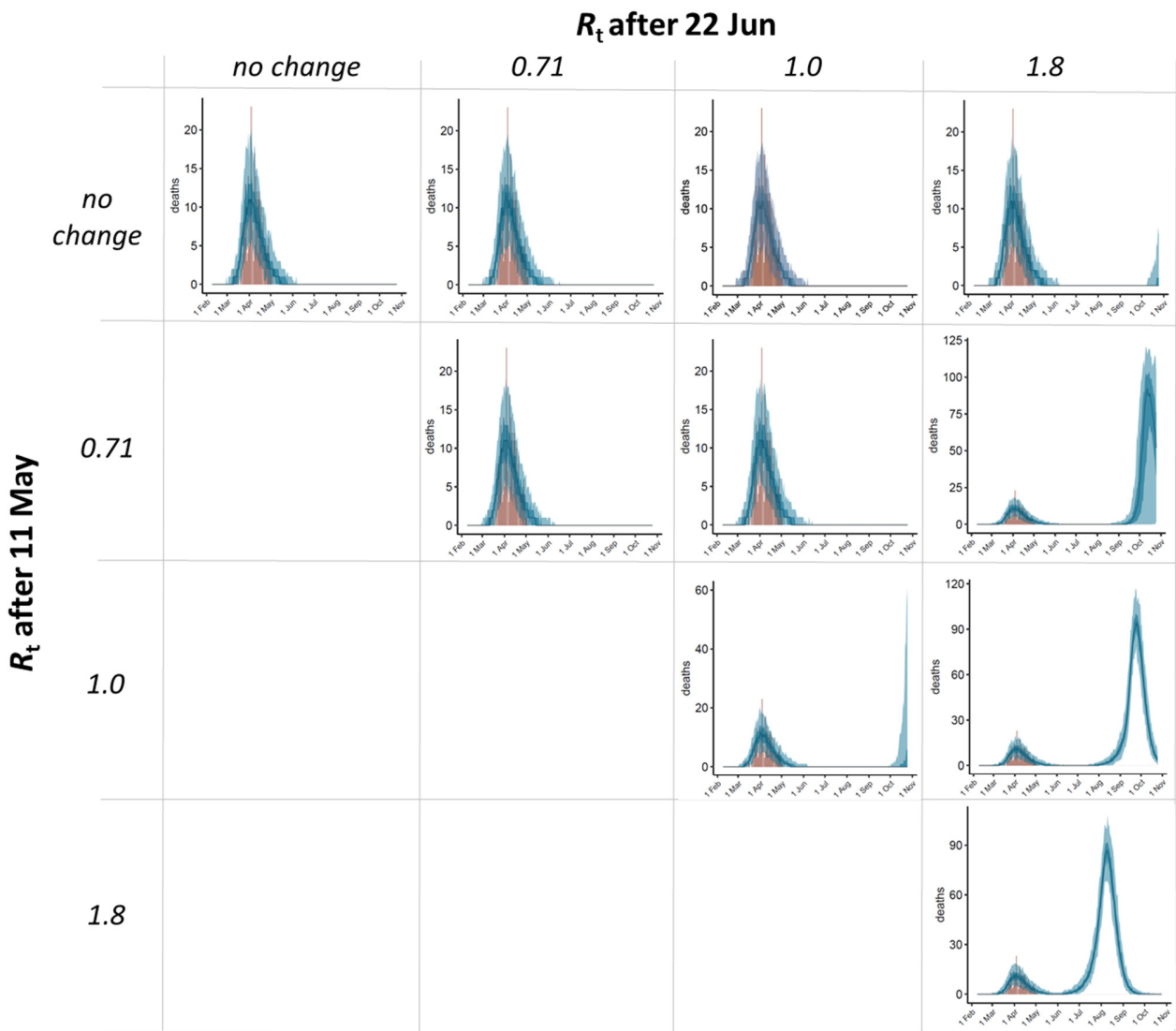
**Supplemental Figure 2.** Estimated evolution of daily deaths over time in Spain for different scenarios according to current model, depending on the potential effects on  $R_t$  of the planned changes in the intervention measures in two key dates (11 May and 22 June)



**Supplemental Figure 3.** Estimated evolution of daily deaths over time in La Rioja for different scenarios according to current model, depending on the potential effects on  $R_t$  of the planned changes in the intervention measures in two key dates (11 May and 22 June).



**Supplemental Figure 4.** Estimated daily deaths over time in Spain for different scenarios according to current model, depending on the potential effects on  $R_t$  of the planned changes in the intervention measures in two key dates (11 May and 22 June), considering return to total normality on 1 September 2020.



**Supplemental Figure 5.** Estimated daily deaths over time in La Rioja for different scenarios according to current model, depending on the potential effects on  $R_t$  of the planned changes in the intervention measures in two key dates (11 May and 22 June), considering return to total normality on 1 September 2020.