

Supplementary Appendix

Table S1. Detail information of Celebrex adjunctive therapy for COVID-19 patients

Case No.	Gender	Age	Admission date	Stage Classification †	Celebrex adjunctive therapy					Discharged date
					Enrolled date	Administration by oral #	Ended date	Outcomes after discontinuation of Celebrex	Side effects	
Celebrex group (Full dose)										
E1	Female	71	2020/2/2	Severe	2020/2/4	0.2g bid	2020/2/15	Remission	Non	2020/3/19
E2	Female	60	2020/2/2	Severe	2020/2/4	0.2g bid	2020/2/15	Remission	Non	2020/2/17
E3	Female	47	2020/1/23	Severe	2020/2/4	0.2g bid	2020/2/9	Remission	Sweating	2020/2/15
E4	Male	64	2020/1/31	Severe	2020/2/4	0.2g bid	2020/2/15	Remission	Non	2020/3/4
E5	Male	54	2020/1/29	Severe	2020/2/13	0.2g bid	2020/2/27	Remission	Mental disorder ‡	2020/3/8
E6	Female	58	2020/2/6	Severe	2020/2/6	0.2g bid	2020/2/15	Remission	Non	2020/2/18
E7	Male	50	2020/1/23	Ordinary	2020/2/13	0.2g bid	2020/2/21	Remission	Non	2020/2/21
E8	Male	26	2020/1/28	Ordinary	2020/2/4	0.2g bid	2020/2/10	Remission	Non	2020/2/10
E9	Female	63	2020/1/29	Ordinary	2020/2/4	0.2g bid	2020/2/15	Remission	Non	2020/2/29
E10	Male	33	2020/2/15	Ordinary	2020/2/15	0.2g bid	2020/2/25	Remission	Non	2020/2/25
E11	Female	43	2020/1/30	Ordinary	2020/2/4	0.2g bid	2020/2/17	Remission	Non	2020/2/18 ¶
E12	Male	33	2020/1/31	Ordinary	2020/2/9	0.2g bid	2020/2/25	Remission	Non	2020/2/28
E13	Female	62	2020/2/5	Ordinary	2020/2/10	0.2g bid	2020/2/13	Remission	Non	2020/2/13 ¶
E14	Female	37	2020/2/7	Ordinary	2020/2/10	0.2g bid	2020/2/17	Remission	Non	2020/2/17
E15	Male	43	2020/2/8	Ordinary	2020/2/10	0.2g bid	2020/2/27	Remission	Non	2020/3/5
E16	Male	44	2020/2/8	Ordinary	2020/2/8	0.2g bid	2020/2/17	Remission	Non	2020/2/17
E17	Female	31	2020/2/8	Ordinary	2020/2/11	0.2g bid	2020/2/14	Remission	Non	2020/2/21
E18	Female	33	2020/2/9	Ordinary	2020/2/10	0.2g bid	2020/2/16	Remission	Non	2020/3/8
E19	Female	41	2020/2/10	Ordinary	2020/2/11	0.2g bid	2020/2/25	Remission	liver dysfunction	2020/3/7
E20	Male	45	2020/2/13	Ordinary	2020/2/13	0.2g bid	2020/2/27	Remission	Non	2020/3/3
E21	Male	24	2020/2/9	Ordinary	2020/2/11	0.2g bid	2020/2/18	Remission	Non	2020/3/5
E22	Female	58	2020/2/9	Ordinary	2020/2/10	0.2g bid	2020/2/18	Remission	Non	2020/2/21
E23	Female	45	2020/2/15	Ordinary	2020/2/16	0.2g bid	2020/2/27	Remission	Non	2020/3/3
E24	Male	47	2020/2/14	Ordinary	2020/2/15	0.2g bid	2020/2/27	Remission	Non	2020/3/3
E25	Female	33	2020/2/14	Ordinary	2020/2/15	0.2g bid	2020/2/24	Remission	Non	2020/2/26

Celebrex group (Half dose)										
E26 §	Female	55	2020/1/26	Critical	2020/2/9	0.2g qd	2020/2/16	Exacerbation	Non	ICU care
E27	Male	67	2020/1/30	Ordinary	2020/2/5	0.2g qd	2020/3/2	Remission	Non	2020/3/2
E28	Male	73	2020/1/30	Ordinary	2020/2/6	0.2g qd	2020/2/7	Remission	Non	2020/2/25
E29	Female	78	2020/2/1	Ordinary	2020/2/4	0.2g qd	2020/2/10	Remission	Non	2020/2/27
E30	Male	37	2020/2/1	Ordinary	2020/2/5	0.2g qd	2020/2/29	Remission	Non	2020/2/29
E31 §	Male	57	2020/2/1	Severe	2020/2/11	0.2g qd	2020/2/14	Exacerbation	Non	2020/2/29
E32	Female	62	2020/2/2	Ordinary	2020/2/4	0.2g qd	2020/2/8	Remission	Non	2020/2/10
E33	Male	30	2020/2/3	Ordinary	2020/2/5	0.2g qd	2020/2/14	Remission	Non	2020/2/20
E34	Male	59	2020/2/3	Ordinary	2020/2/5	0.2g qd	2020/2/10	Remission	Non	2020/3/2
E35	Female	53	2020/2/3	Ordinary	2020/2/5	0.2g qd	2020/2/14	Remission	Non	2020/2/24
E36	Female	81	2020/2/4	Ordinary	2020/2/10	0.2g qd	2020/2/12	Remission	Non	2020/2/21
E37 *	Male	35	2020/1/29	Ordinary	2020/2/2	ibuprofen suspension 8ml bid	2020/2/19	Remission	Non	2020/2/19 ¶
Control group										
C1	Female	65	2020/2/2	Ordinary	/	/	/	Exacerbation	/	2020/2/15
C2	Male	82	2020/2/1	Ordinary	/	/	/	Exacerbation	/	2020/2/28
C3	Female	50	2020/2/2	Ordinary	/	/	/	Remission	/	2020/2/12
C4	Female	33	2020/2/2	Ordinary	/	/	/	Exacerbation	/	2020/2/16
C5	Male	43	2020/2/1	Ordinary	/	/	/	Remission	/	2020/2/14
C6	Male	30	2020/2/6	Ordinary	/	/	/	Remission	/	2020/2/13
C7	Male	44	2020/2/1	Ordinary	/	/	/	Remission	/	2020/2/8

†Severity of illness, **mild**: the clinical symptoms are mild and no pneumonia manifestation can be found in CT imaging; **Ordinary**: Fever and respiratory tract symptoms, etc. and pneumonia manifestation can be seen in CT imaging; **Severe**: Meeting any of the following: 1) Respiratory distress, RR≥30 breaths/min; 2) Oxygen saturation ≤ 93% at a rest state; 3) Arterial partial pressure of oxygen (PaO₂)/oxygen concentration (FiO₂) ≤ 300mmHg; **Critical**: Meeting any of the following: 1) Respiratory failure occurs and mechanical ventilation is required; 2) Shock occurs; 3) Complicated with other organ failure that requires Intensive care unit (ICU) care.

bid: twice a day; qd: once a day.

‡The case E5 in the experimental group also administrated with chloroquine phosphate, 0.5 g per day from February 13 to 22.

¶The case E11, E13 and E37 in the experimental group had the SARS-CoV-2 returned to be positive after discharged and re-hospitalized on February 22, 21 and 28 respectively. Recently, three of them were discharged on March 4, 5 and 6.

§The case E26 and E31 in the experimental group were already in the ICU while received the half dose and 8 or 4 days Celebrex treatment, respectively.

* Celebrex group case E37 was used ibuprofen treatment as a special case, and experienced less therapeutic effect comparison to Celebrex.

Interpretation of Table S1

In the experimental group, case E3 presented with excessive sweating as a suspected side effect of the treatment. The Celebrex treatment was terminated on day 5. In another case, the patient case E5 with a mental disorder was found also taking chloroquine phosphate, 0.5 g per day for nine days. The patient case E19 had a liver dysfunction and found no obvious clues related to this adverse effect (Table S1).

Under routine treatment, there were two cases that progressed to severe type and were transferred into the intensive care unit (ICU). While in the ICU, they received half doses of Celebrex for 4 and 8 days. The Celebrex intervention could not improve the exacerbation status, however, one of them was cured and discharged after two weeks, and the other remained in ICU care (Table S1).

There was a special case in the experimental group, patient case E37 first took Ibuprofen and continued for 17 days without Celebrex. Compared to the Celebrex treatment, this patient experienced that Ibuprofen also aided in the recovery of COVID-19 infection, but had an overall less curative effect than Celebrex (Table S1).

Through March 19, 2020, 36 of 37 cases (97.3%) were recovered and discharged and one critical case (2.7%) was still hospitalized (Table S1).

Figure S1

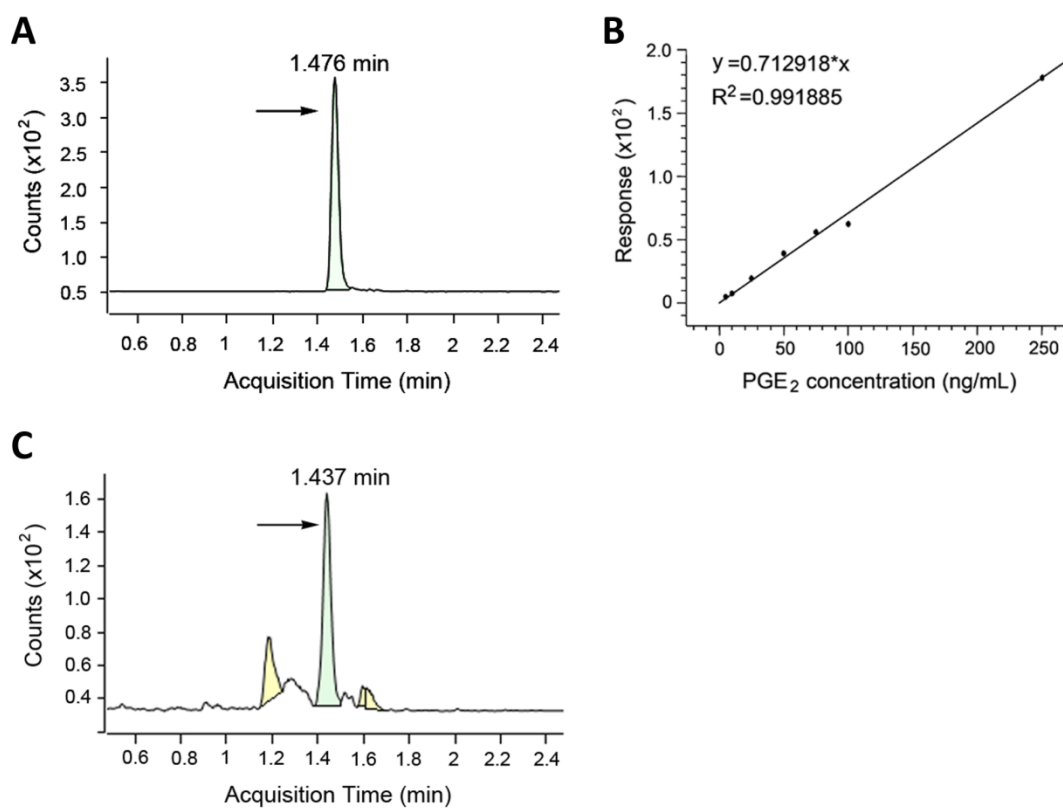


Figure S1: The measurement of urinary PGE₂ in COVID-19 patients by mass spectrometry. A: The specific peak of PGE₂ detected by liquid mass spectrometry (the acquisition time was 1.476 min); B: Standard curve of PGE₂ was linearized (the goodness of fit was $R^2 > 0.99$); C: The urine samples of COVID-19 patients showed a specific peak of PGE₂ (the acquisition time was 1.437 min), and the integral area of this specific peak represented the concentration of PGE₂ (arrow).

Figure S2

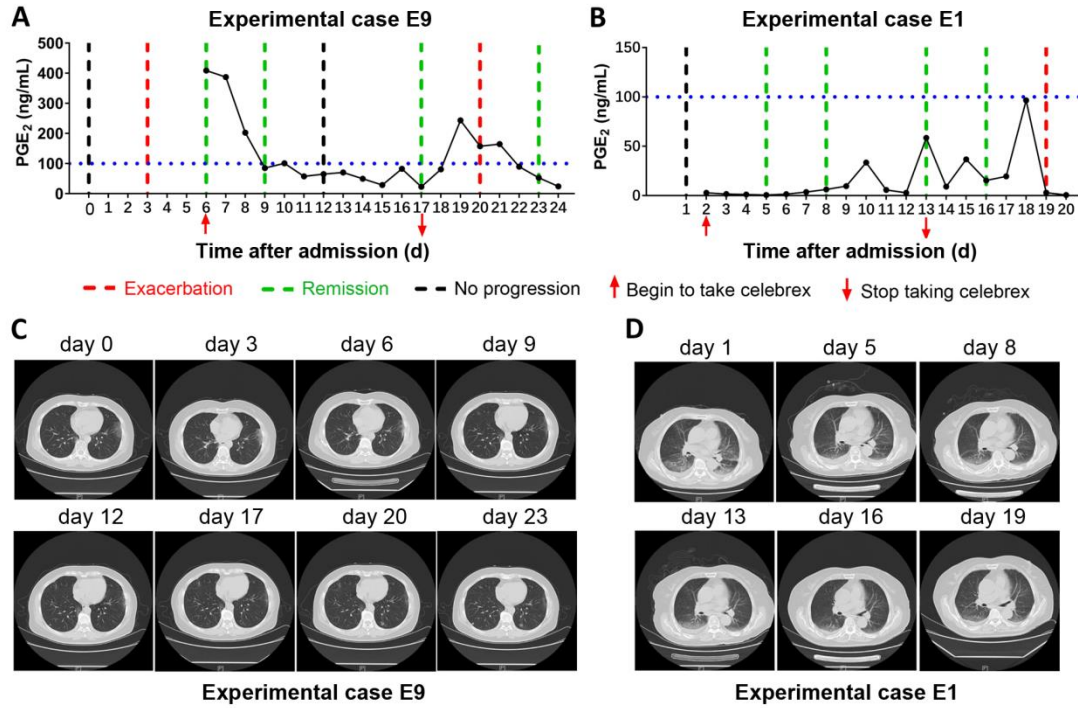


Figure S2. Withdraw of Celebrex caused PGE₂ elevation and CIVOD-19 condition fluctuation. A and B: Two represented cases upon the Celebrex termination (case E9 on day 17; case E1 on day 13), followed with increased urinary PGE₂ (case E9 from day 17-20; case E1 from day 13-18); C and D: The representation of the chest CT images (case E 9 on day 19; case E1 on day 20) illustrated exacerbated outcomes upon withdraw of Celebrex.