

Supplementary Figure 1.

p.L605F variant impairs FANCI stability and functions. A) HeLa FANCI^{+/+} cells were transfected with siRNA control (siCTL) or targeting FANCI (siFANCI) and then complemented with Flag-FANCI or empty vector (EV). They were then treated with 50 ng/ml MMC for 18 hours. The ubiquitination of FANCI and FANCD2 (upper band, H) after treatment was assessed by western blot. L=lower band, corresponds to non-ubiquitinated FANCI or FANCD2. B) HeLa FANCI^{-/-} cells, clone 1 and 2, were complemented with increasing amounts of FANCI p.L605F plasmid. Protein expression was assessed by western blot, using the indicated antibodies. C) HeLa FANCI^{+/+} cells were transfected with siRNA targeting FANCI and then complemented with EV or Flag-FANCI siRNA resistant constructs. After treatment with MMC (50 ng/ml, 18 hours), FANCD2 immunofluorescence staining was performed and FANCD2 foci were counted in Flag positive cells. Mean with SEM are shown, and a Kruskal-Wallis test was performed. P-values are shown. D) HeLa FANCI^{+/+} cells were transfected with siRNA targeting FANCI and then complemented with Flag-FANCI siRNA resistant constructs. Cells were treated with CHX with or without DNA damaging agents for the indicated times. At each time point, whole cell extracts were analyzed by western blot to assess protein levels. E) HeLa FANCI^{-/-} cells, clone 2, were complemented with indicated constructs of Flag-FANCI variants and plated in triplicate in a 96 well plate and were transfected with EV or the indicated Flag-FANCI constructs. Cell viability was monitored following cisplatin or Olaparib treatments for 72 hours. Cell viability was assessed by counting remaining nuclei.

Supplementary Figure 2.

Pedigrees of *FANCI* c.1813C>T; p.L605F OC and BC carrier families. Cancer type (ovarian [Ov], breast [Br], cervical [Cx], colon [Co], rectal [Rec], stomach [St], kidney [Kdn], prostate [Pro], lung [Lg], peritoneum [Perit], uterine [Ut], larynx [Lar], Hodgkin's lymphoma [Hod], lymphoma [Lym], and primary site unknown [PSU]) and age of diagnosis. BRCA1 and BRCA2 carrier status is shown for mutation-positive families. All other families are BRCA1 and BRCA2 mutation negative.

Supplementary Figure 3.

FANCI protein expression analyzed by IHC of HGSC (a), normal fallopian tube (a, black box), and *FANCI* c.1813C>T OC carrier (b) tissue cores. TMAs were stained with anti-FANCI antibody on the same slide.

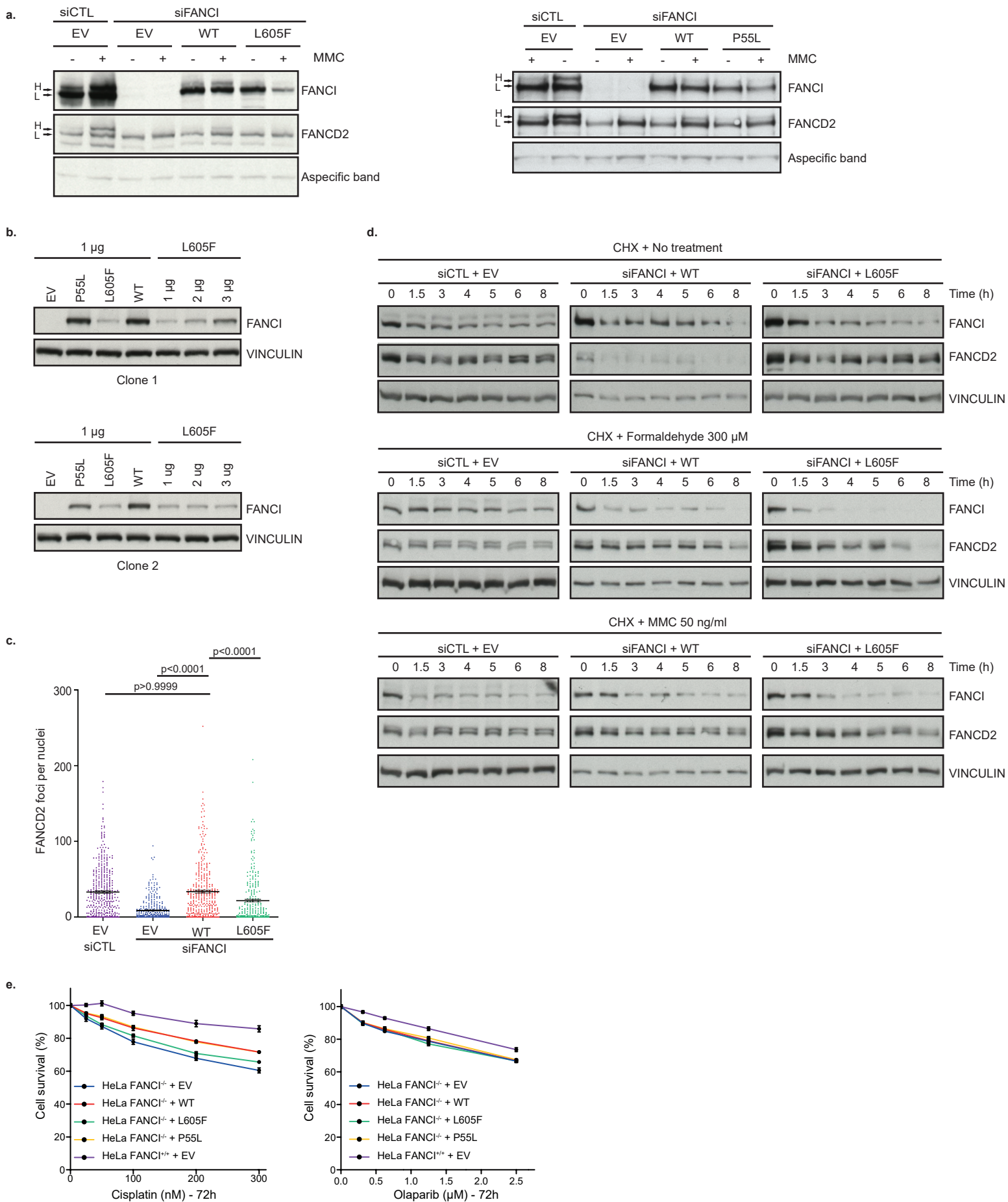
Supplementary Figure 4.

Mutation analysis of *FANCI* c.1813C>T and *TP53* in FC HGSC cases. A) DNA sequencing chromatogram showing the region containing c.1813C>T corresponding to (top to bottom): PT0003 blood showing the heterozygous variant, PT0003 right tumor (FFPE) showing loss of the wild-type allele, PT0003 left tumor (FFPE) showing loss of the wild-type allele, PT0002 blood showing the heterozygous variant, and PT0002 left tumor (FFPE) showing loss of the wild-type allele. The forward sequence is shown. B) DNA sequencing chromatogram showing the region containing identified *TP53* variants corresponding to (top to bottom): PT0003 left tumor (FF) showing *TP53* variant c.559+1C>T and PT0002 right tumor (FF) showing *TP53* variant c.659A>G. The reverse sequence is shown. FFPE: formalin-fixed paraffin-embedded tumor tissue; FF: fresh frozen tumor tissue

Supplementary Figure 5.

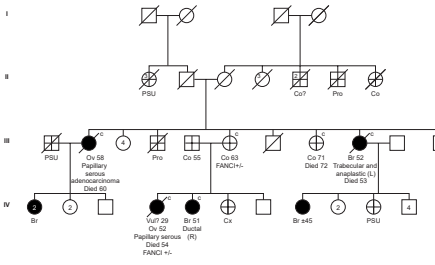
Rare (VAF<1%) *FANCI* variants found in BC (a) and other cancers (b) in the literature.

Supplementary Figure 1.

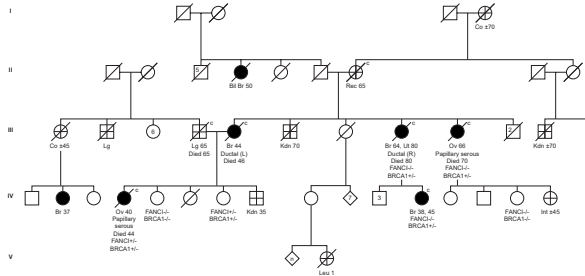


Supplementary Figure 2.

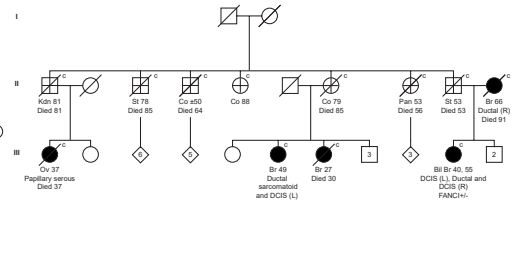
Family 1480



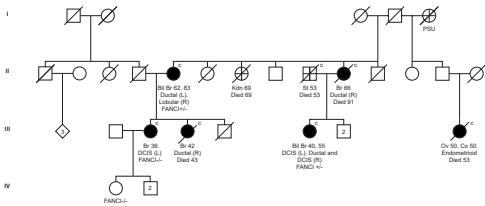
Family 1553
BRCA1 c.2834_2835delG/TGAGC; p.S945Rfs*6



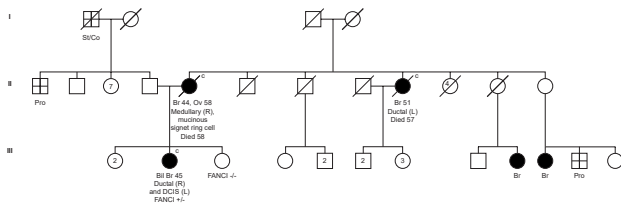
Family 1465



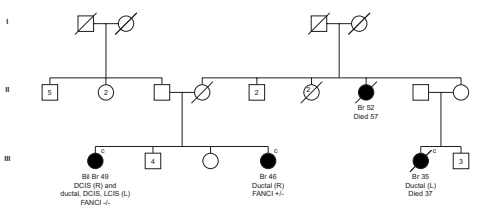
Family 1442



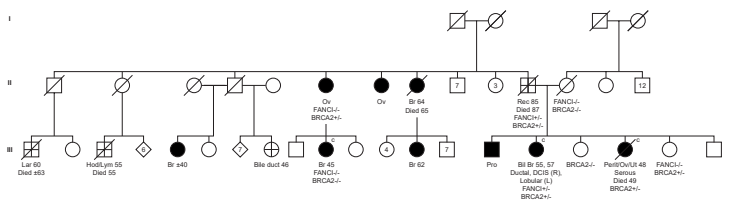
Family 1501



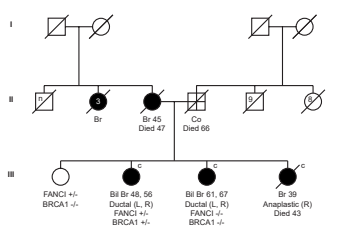
Family 1522



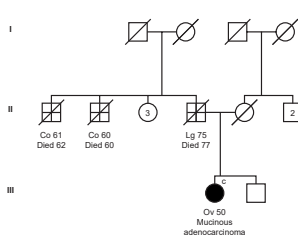
Family 762
BRCA2 c.3170_3174delAGAAA; p.K1057fs*8



Family 1520
BRCA1 c.2125_2126insA; p.F709Yfs*3

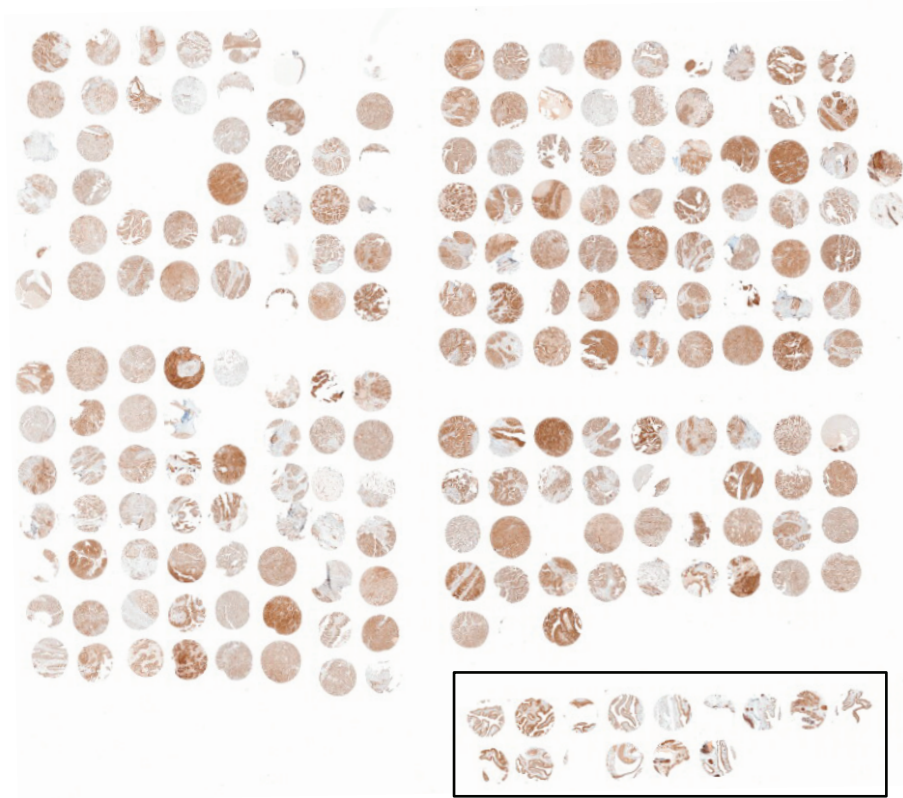


Family 1023

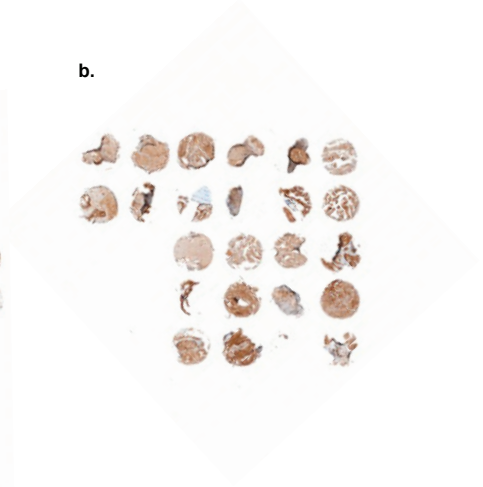


Supplementary Figure 3.

a.

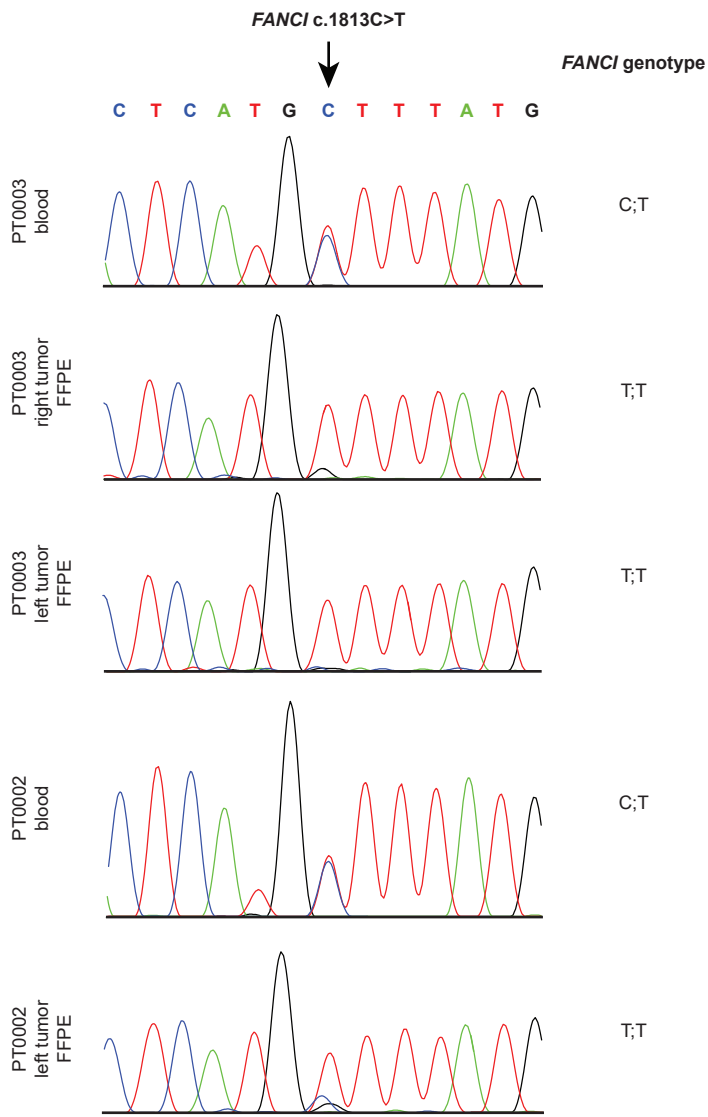


b.

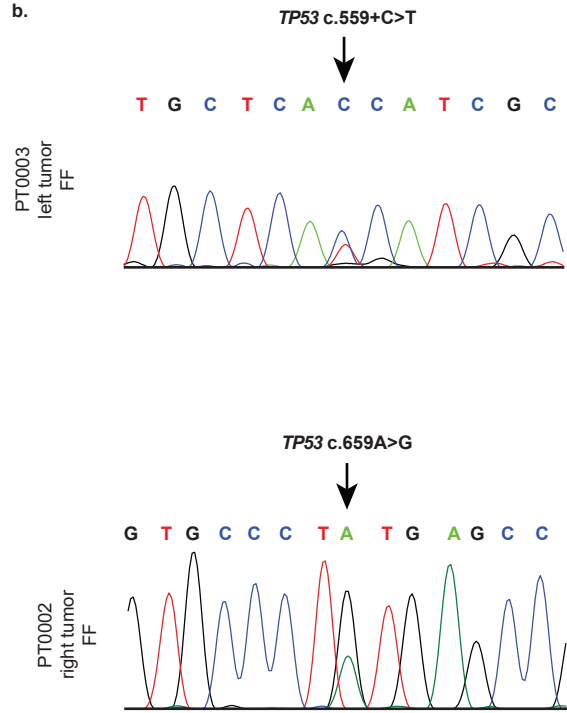


Supplementary Figure 4.

a.



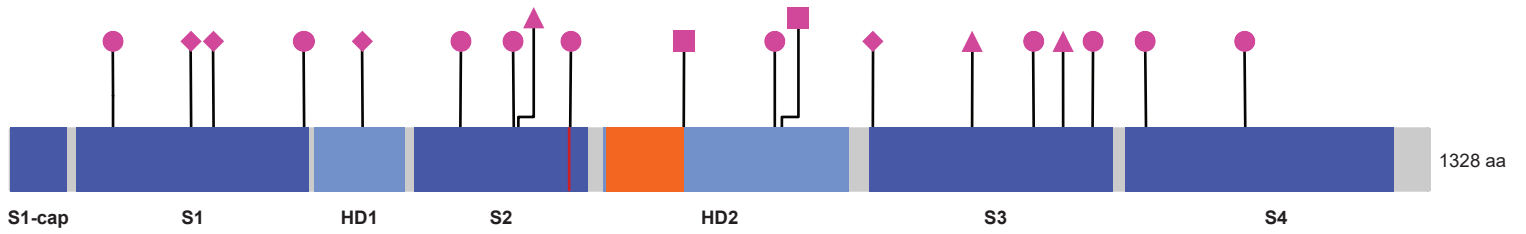
b.



Supplementary Figure 5.

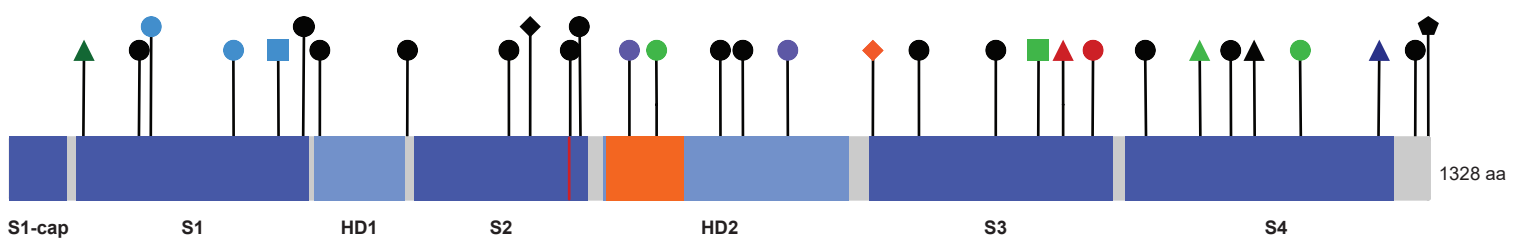
a.

Breast cancer



b.

Other cancers



Solenoid domain

Helical domain

Ubiquitination site, K523

S/TQ cluster

Variant effect

◇ Nonsense ⬠ Stop loss

△ Frameshift ○ Missense

□ Splicing ⬡ In-frame deletion

Cancer type

■ Breast cancer⁹⁹⁻¹⁰⁶

■ Prostate¹⁰⁴

■ Prostate¹⁰⁷

■ Prostate¹⁰⁷

■ Sarcoma¹⁰⁹

■ Malignant pleural mesothelioma¹¹⁰

■ Acute myeloid leukemia¹¹¹

■ Head and neck carcinoma¹¹²

■ Colorectal¹¹³

1 **Supplementary Note**

2
3 To further characterize the germline genomic landscape of *FANCI* c.1813C>T carriers,
4 we performed WES analysis of all seven carriers identified in the sporadic FC OC cases and
5 compared it with WES data from five carriers identified in OC families (**Table 1**). We
6 investigated DNA repair pathways genes (n=276⁸⁴) rationalizing that aberrant DNA repair is a
7 hallmark of cancer and other variants in these genes may contribute to risk if shared among
8 *FANCI* c.1813C>T carriers. Bioinformatic analyses of WES data identified a rare DNA
9 polymerase γ (*POLG*) c.2492A>G; p.Y831C variant in the heterozygous state in all *FANCI*
10 c.1813C>T carriers. *POLG* encodes the catalytic subunit for polymerase γ , the only known
11 mitochondrial DNA polymerase, and has not been reported in association with cancer⁸⁵. *POLG*
12 c.2492A>G has not been reported in association with a disease. Interestingly, *POLG*
13 c.2492A>G is predicted to be damaging in 10/13 *in silico* tools (data not shown). Unlike *FANCI*,
14 *POLG* is transcribed on the negative strand immediately downstream of *FANCI* where its 3'
15 UTR is encoded in part by a genetic region shared in common with *FANCI*. As the estimated
16 distance between *FANCI* c.1813C>T and *POLG* c.2492A>G is 36.6 kilobase pairs, it is possible
17 that these alleles are in linkage disequilibrium in the FC population due to common ancestry^{25,26}.
18 To investigate this possibility, all FC cancer cases were genotyped for *POLG* c.2492A>G carrier
19 status. Only one case was found not to carry co-occurring *FANCI*-*POLG* variants: a *FANCI*
20 variant carrying mucinous OC case. We also investigated available genotyping data from
21 CARTaGENE for cancer-free FCs and found that *FANCI* c.1813C>T tended to co-occur with
22 *POLG* c.2492A>G (Log2 Odds Ratio=15.2) suggesting that these rare alleles are likely in
23 linkage disequilibrium in FCs.