

Supplementary Information

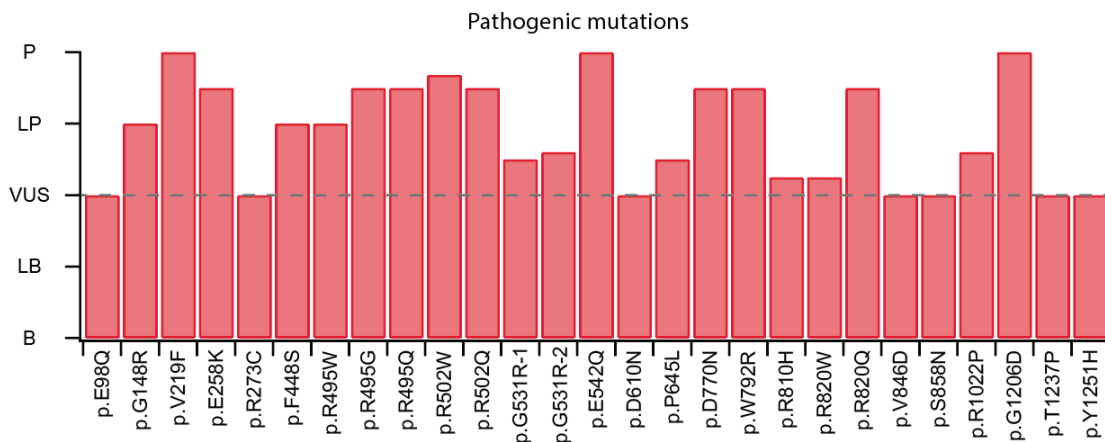
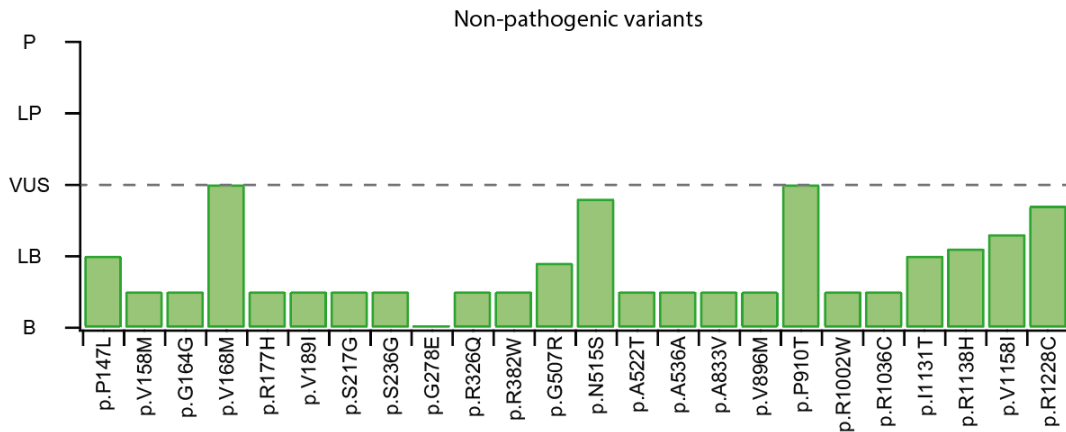
Protein haploinsufficiency drivers identify *MYBPC3* mutations that cause hypertrophic cardiomyopathy

Carmen Suay-Corredera[¶], Maria Rosaria Pricolo[¶], Elías Herrero-Galán, Diana Velázquez-Carreras, David Sánchez-Ortiz, Diego García-Giustiniani, Javier Delgado, Juan José Galano-Frutos, Helena García-Cebollada, Silvia Vilches, Fernando Domínguez, María Sabater Molina, Roberto Barriales-Villa, Giulia Frisso, Javier Sancho, Luis Serrano, Pablo García-Pavía, Lorenzo Monserrat, Jorge Alegre-Cebollada*

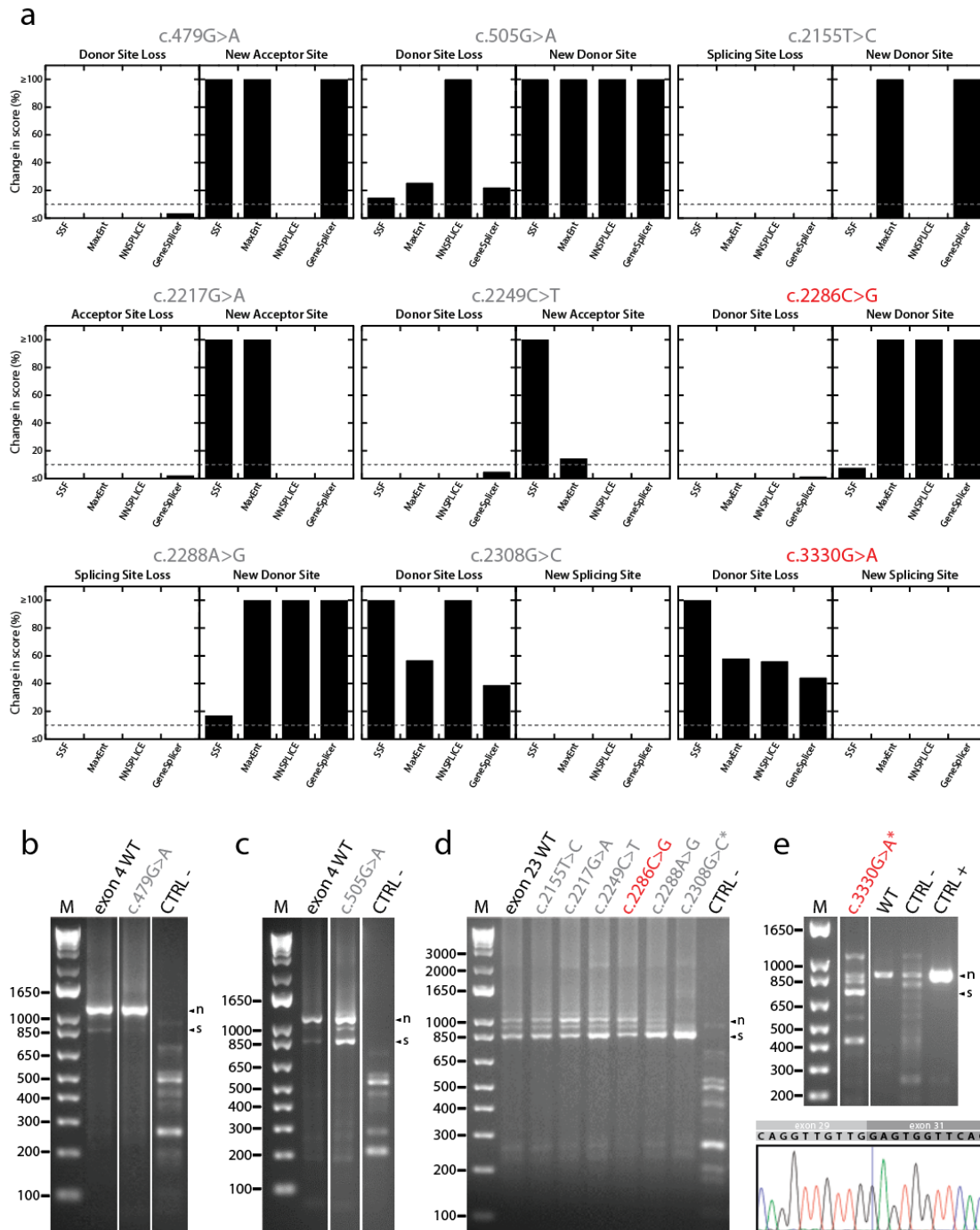
- **Supplementary Files S1-S4 (separate excel files)**
- **Supplementary Figures S1-S8 (this document)**
- **Supplementary Notes S1-S2 (this document)**
- **Supplementary Tables S1-S3 (this document)**
- **Supplementary References (this document)**

[¶] These authors contributed equally to this work

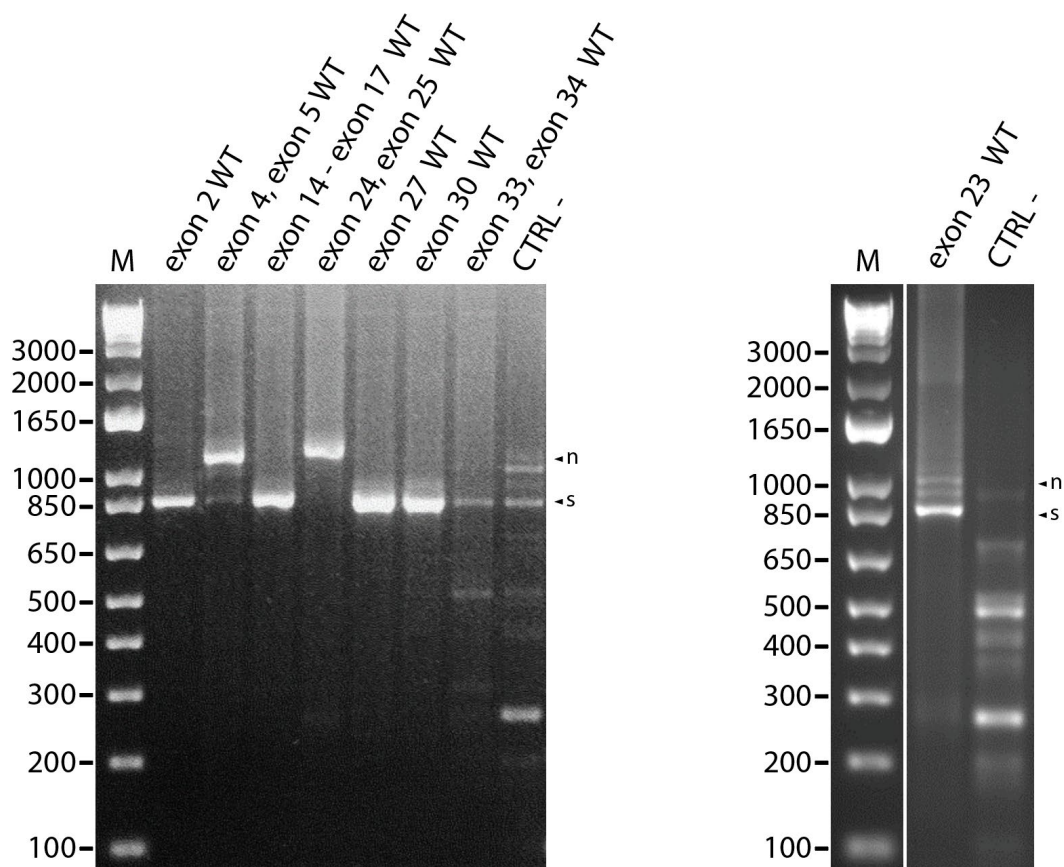
*To whom correspondence should be addressed: jalegre@cnic.es (@AlegreCebollada)



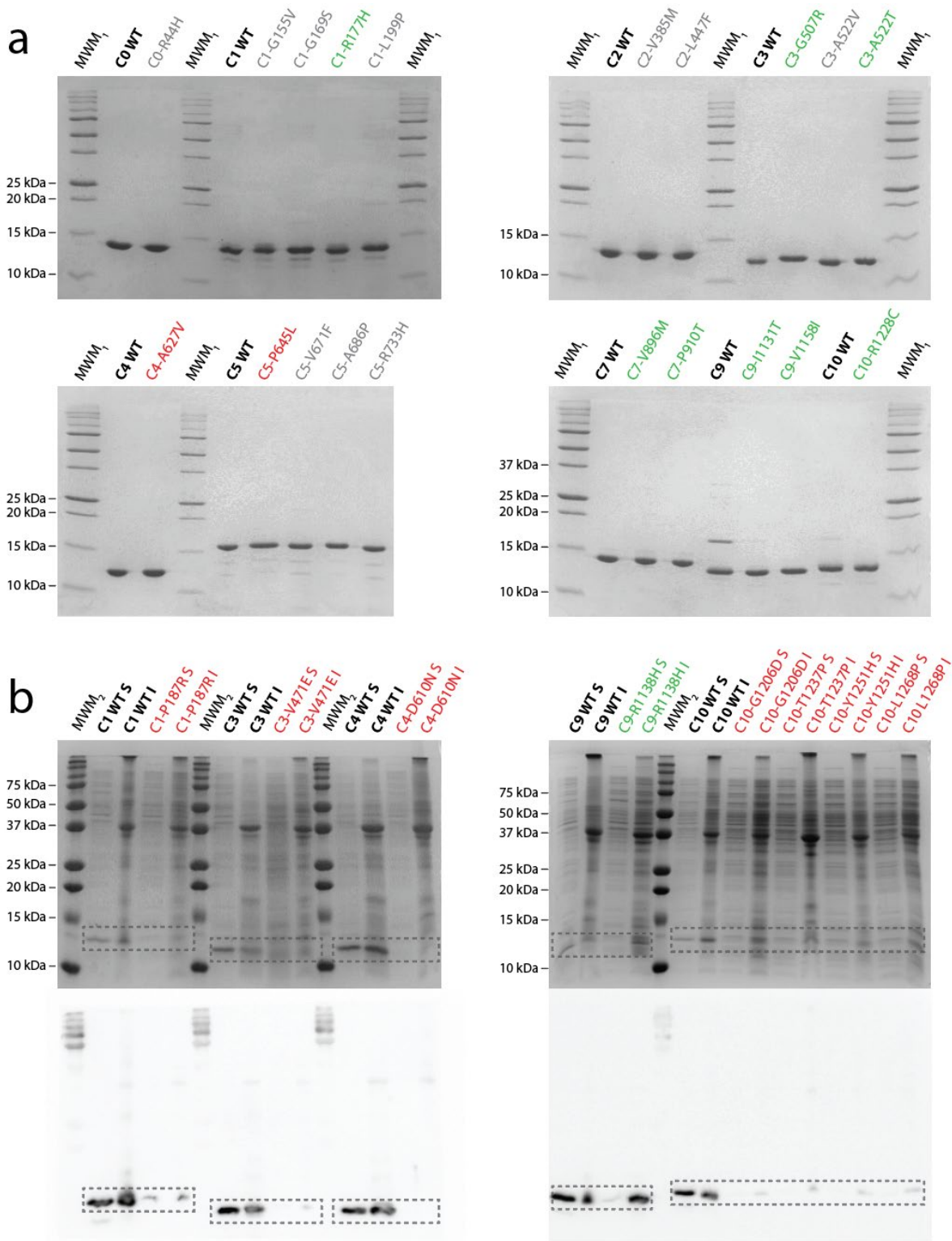
Supplementary Figure S1. Pathogenicity assignment of *MYBPC3* variants according to information in ClinVar. Each variant is given an average score from 0 to 4 based on the information that was available in ClinVar for 24 non-pathogenic variants and 27 pathogenic mutants. B: benign (score = 0), LB: likely benign (score = 1), VUS (score = 2), LP: likely pathogenic (score = 3), P: pathogenic (score = 4). The pathogenic mutations p.G531R-1 and p.G531R-2 correspond to c.1591G>C and c.1591G>A, respectively.



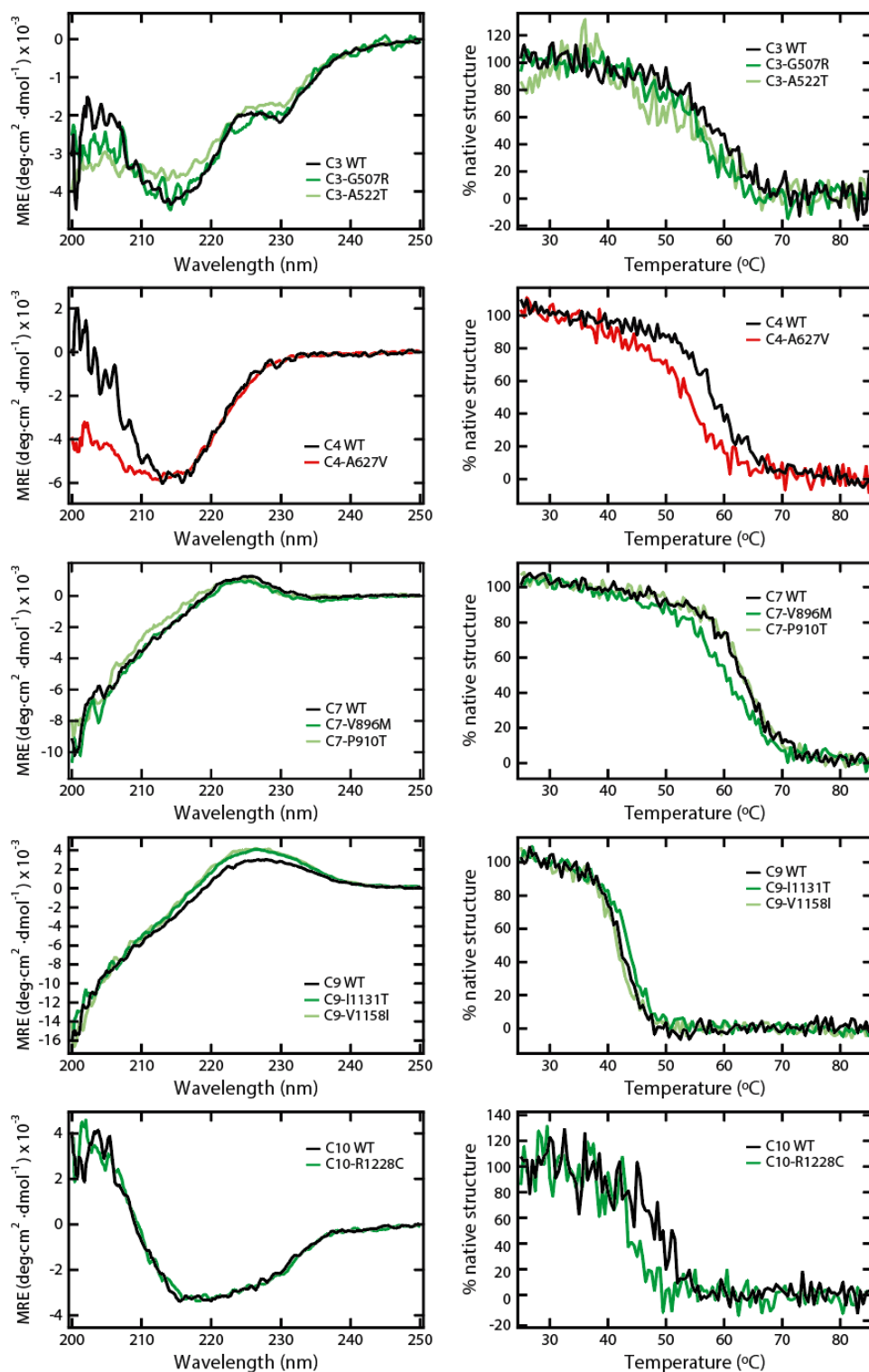
Supplementary Figure S2. Assessment of predicted RNA splicing alterations. (a) Prediction of RNA splicing alteration for different VUS (grey) and pathogenic (red) *MYBPC3* variants. (b-d) Assessment of predicted alterations in RNA splicing using mini-gene assays. CTRL- are non-transfected controls. (e) Assessment of predicted alteration in RNA splicing induced by variant c.3330G>A using peripheral blood. CTRL+, analysis using mRNA obtained from healthy myocardium. CTRL-, analysis using mRNA isolated from HeLa cells, which do not express *MYBPC3*. In panels (b-e), we use “n” and “s” to indicate bands corresponding to native splicing, or to skipping of exons, respectively (the other bands correspond to non-specific amplifications that could not be identified). M corresponds to 1Kb plus DNA ladder (Invitrogen) and base pairs are indicated. Asterisks mark confirmed alterations of RNA splicing. In variant c.2308G>C, no band corresponding to native splicing is detected. In variant c.3330G>A, a new band marking skipping of exon 30 is detected and verified by Sanger sequencing (bottom of the panel)



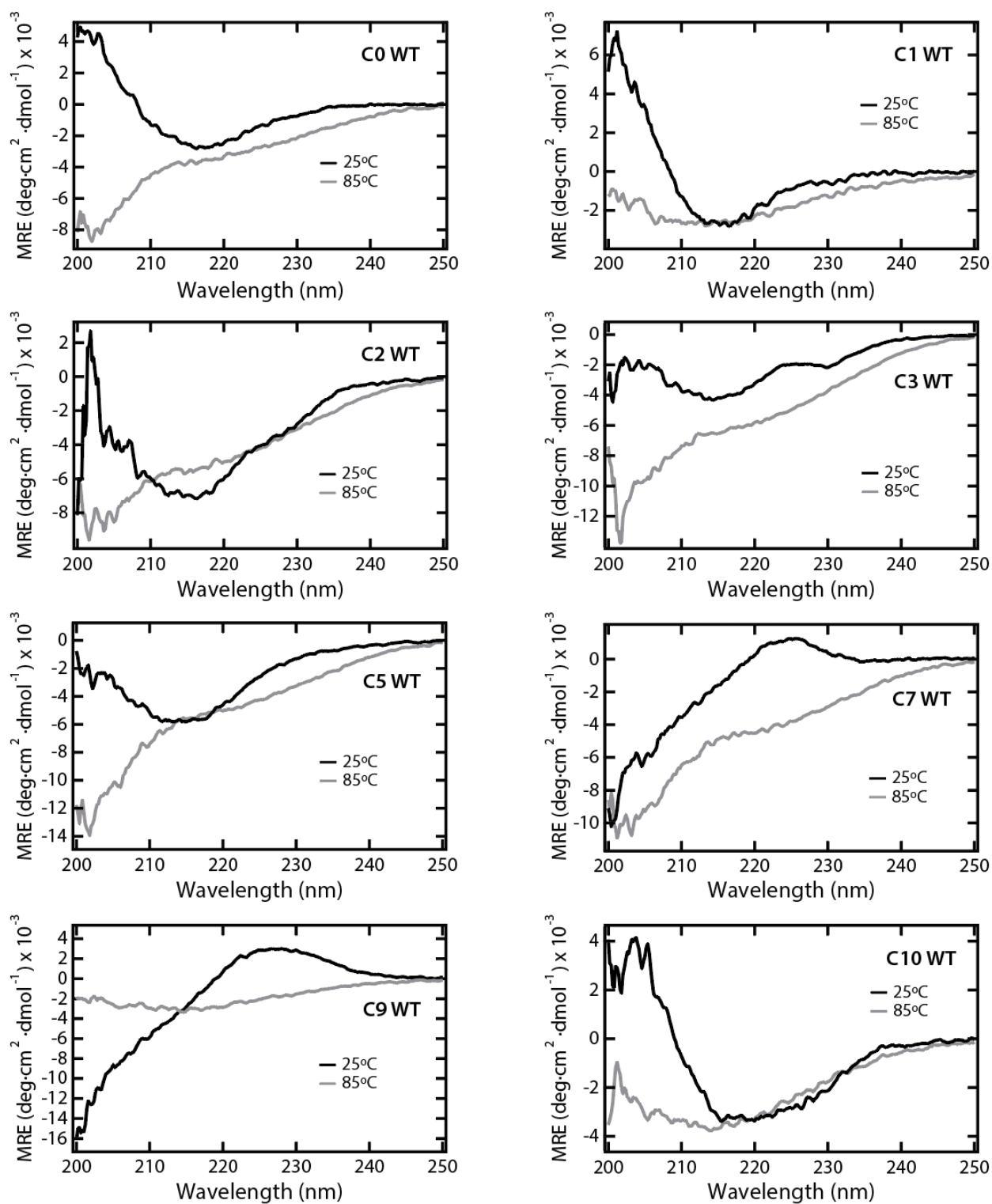
Supplementary Figure S3. RNA splicing of wild-type (WT) MYBPC3 sequences assayed by mini-gene strategy. In these assays, skipping of the *MYBPC3* insert results in a band at ~850 bp while correct splicing results in lower electrophoretic mobility bands (see **Supplementary File S2**). CTRL- are non-transfected controls. M corresponds to 1Kb plus DNA ladder (Invitrogen) and base pairs are indicated. We use “n” and “s” to indicate bands corresponding to native splicing or to skipping of exons, respectively (the other bands correspond to non-specific amplifications that could not be identified).



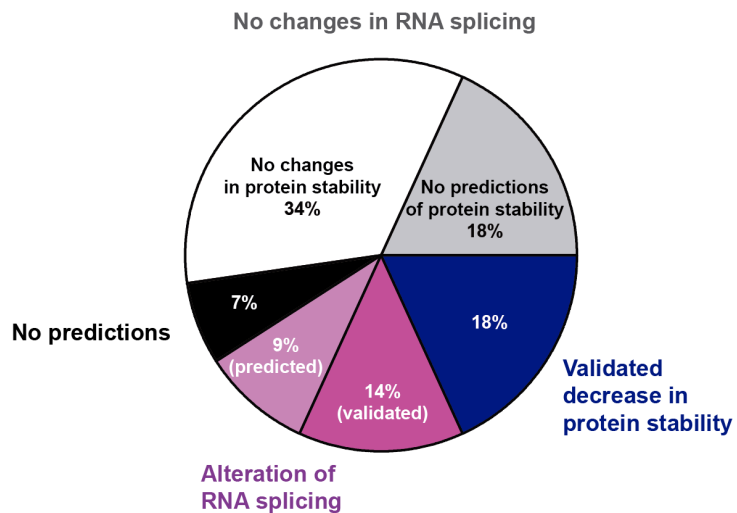
Supplementary Figure S4. Production of cMyBP-C domains in *E. coli*. (a) Coomassie-stained 17% SDS-PAGE gels to examine purity of WT and mutant domain preparations. M₁: Precision Plus Protein Unstained Standards (Bio-Rad). (b) SDS-PAGE analysis of insoluble (I) and soluble (S) fractions from IPTG-induced *E. coli* cultures of WT domains and mutants that could not be purified. *Top*: Coomassie-stained 17% SDS-PAGE gels. *Bottom*: western-blot using anti His-tag antibody. M₂: Precision Plus Protein Dual Color (Bio-Rad). Mutants are colored according to their pathogenic status: pathogenic (red), non-pathogenic (green), VUS (grey). Regions of interest appear in dashed boxes.



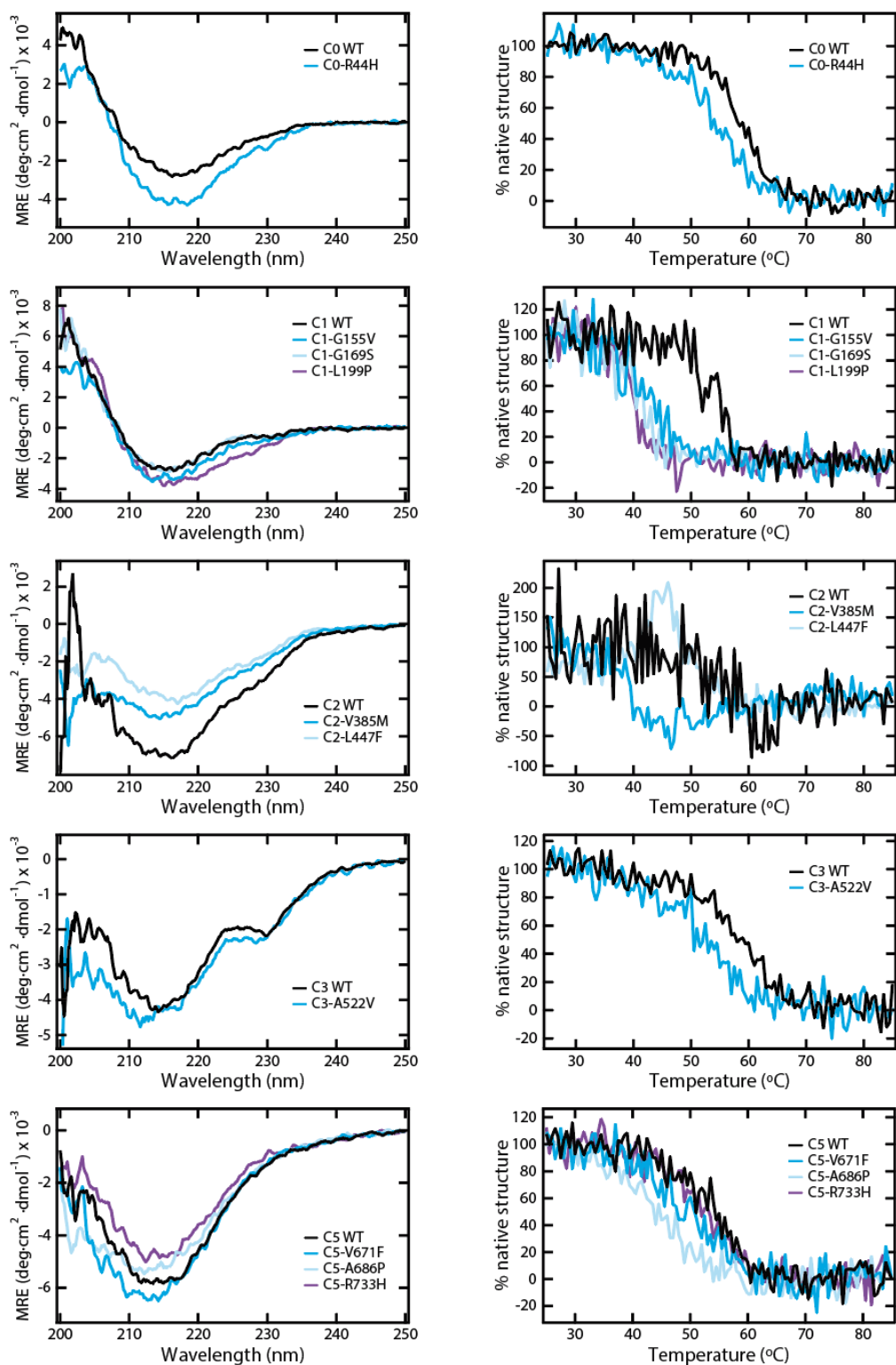
Supplementary Figure S5. Examination of the effect of mutations in the structure and stability of cMyBP-C domains. *Left:* Far-UV CD spectra (given as mean residue ellipticity, MRE) of WT and mutated cMyBP-C domains (green: non-pathogenic variants; red: pathogenic mutations). The spectra of domains C3, C4 and C10 show a minimum around 215 nm, which is typical of β -structure-rich immunoglobulin-like domains^{1,2}. Domains C7 and C9 spectra show positive CD signal at \sim 230 nm, which is typically seen in Fn-III-type domains^{3,4}. No major changes in CD spectra are detected for the variants shown here. *Right:* thermal denaturation profiles for WT and mutant domains.



Supplementary Figure S6. Far-UV CD spectra of cMyBP-C domains at 25 and 85°C. Spectra for domain C4 have been reported elsewhere². CD signals are given as mean residue ellipticity, MRE.



Supplementary Figure S7. Distribution of molecular phenotypes in 44 pathogenic putative non-truncating mutations in MYBPC3. The plot assumes that bioinformatics predictions are able to capture alterations with 100% sensitivity^{5,6}. The pie chart also indicates the fraction of mutations for which no protein stability and/or RNA splicing predictions were available. Mutants with detected alteration of RNA splicing or extensive protein destabilization are grouped regardless of predictions of the other haploinsufficiency driver. The group for which no changes in RNA splicing are predicted includes two subgroups according to the availability of predictions for protein stability.



Supplementary Figure S8. Examination of the effect of VUS in the structure and stability of cMyBP-C domains. *Left:* Far-UV CD spectra (given as mean residue ellipticity, MRE) of WT and mutated cMyBP-C domains. Mutations correspond to the VUS predicted to destabilize the domains in bioinformatics screening. All spectra show a minimum around 215 nm, which is typical of β -structure-rich immunoglobulin-like domains^{1,2}. No major changes in CD spectra that cannot be explained by errors in concentration estimation are detected. *Right:* thermal denaturation profiles for WT and mutant domains.

Supplementary Note S1. Position of variants in the *MYBPC3* gene (ENST00000545968.6). Variants are highlighted in red, green or blue according to their pathogenicity and identified to the right of the *MYBPC3* sequence. Mutation in one-letter amino acid code is also indicated. Format and colors used are indicated below. Variants predicted to induce alterations of splicing are indicated: donor loss (DL), acceptor loss (AL), donor gain (DG), acceptor gain (AG). Validated predictions are underlined and experimentally discarded predictions are crossed out. Exon numbers are indicated at the beginning of each exon.

EXON	Pathogenic mutation
CODING SEQUENCE	Non-pathogenic variant
intron	Variant of Uncertain Significance

AGTCCCTCTTTGGGTGACCTGTGCCTGCTTCGTGCCTGGTGTGACGTCTC ex1
 TCAGG**ATGCCTGAGCCG****GGGAAGAAGCCAG**gtagctttaggactggggtt **c.13G>T (G5W)**
 gggctcaagtgtgggagcaggggggtgtctacaattggggagcagggcta
 ggagggagttcttgaggggggtgacgaggacgtggcctctgagcccagga
 acaggggagccagtcctccaggggccttttttgattctcggtttctttt
 tcccatccctctgatgagaggtgaaggtaaacccaaggtcagggagcag
 agaggggacacagccaagacaggaagcaccgggggtcaaccattctgag
 aatgcaaagggaccccttccctgtcccattgccttccaccttccacagcaa
 ggttccccgcggacagagcccagctttagtatggagctgagccaggtca
 cggcatgccttcagaccagtctctaccactatgggtctcagctctccaa
 cctgggggtgcccgggggtgggtggcattggggtgggttctctctggctgt
 gacattatctgcttcatgagcctgtacgggtgtggcccccatggtgaggg
 gacacagcccctcttctctgagagaggacagtcaggagcccctgaacca
 ggccaagggcagggaaaatcacagcccagggacctgggcctgggctgtgc
 ccttatgaaggttgtccagggcagagatccaggtccccatccccagcgc
 cctcccagggcagctttatctcagttgctgatacccagcctgaggtcctt
 ggaggacaaatttgccacattccaagtaggcagacttccccgcccctg
 ccaagggcccgaatggttgggggaaagggagctgggttcatcacgggtg
 tctccaagcagggaaagtggacacatgcagaaaaagtcttggttgggaggt
 caggaccacagccctggctctcccagctgctagctgtgtgatcttgagg
 agccgcttagcttctctgagcctcagtgctcctcctctgagaaatgaacag
 aataactgcaactacctcagagaactggtagagtattacgtgaggggatg
 catagaaagtgctagcacagatattactgagaggggctgcaggggcccggg
 tgacgctccaaccaggggcccgtgtagcctccacctggccctcag**TCT** ex2
CAGCTTTTAGCAAGAAGCCACGGTCAGTGGAAAGTGGCCGCAGGCAGCCCT **c.39C>T (S13S) DG; c.41A>G (K14R)**
GCCGTGTTTCGAGGCCGAGACAGAGCGGGCAGGAGTGAAGGTGCGCTGGCA **c.50G>A (R17Q); c.74G>A (S25N)**
CGCGGAGGCAGTGACATCAGCGCCAGCAACAAGTACGGCCTGGCCACAG **c.97A>G (T33A); c.104G>A (R35Q)**
AGGGCACACGGCATA CGCTGACAGT CGGGAAGTGGGCCCT GCGGACCAG **c.122G>A (R41H)**
GGATCTTACG CAGTCATTGCTGGCTCCTCCAAGGTCAAGTTCGACCTCAA **c.131G>A (R44H)**
GGTCATAGAGGCA **c.194C>T (T65M) AG; c.205C>T (R69W)**
AGGTCATAGAGGCA **c.220G>A (A74T)**
GGTATAGAGGCA **c.239C>G (A80G)**
GGTATAGAGGCA **c.292G>C (E98Q) DL**
 gtaagatcctgatcagccttccctgaggtttgggt
 gctgggggaggggagcccagcactctccatccatccagggaaacaggag
 gtgctttcacactttcttgcctttgctgtggctgtgccccccgcccaggaa
 cgccctttcccccttttctgcacatgacctctctgagtacccccatgtgc
 catcctggcttgttccagccatggggtaggtgggagagatgaacaagaca
 caaccctctctccccctgcagacctcctggggagatgacctgcacag
 acggccgggaagcccaggagctgtggatgaggggagtgagcccagctct
 gaggggctgctctaaggctggggcagagcagggatggacctggagctgtt
 cagggcagatgcagaggacatgggaactgatggcctgggacggggaggag
 aatgtgagagggcaggtggctctccagctcagcatgagctgcctctgagg
 ggcccaggcagcgggaggacagccatggcagactttcctcatccacagcg
 ggctcatgggtccaatgctcaggagagagaggggtggaggggtctctggtt
 agtggctgcccactcactccatctgatccccctccag**AGAAGGCAGAGCC** ex3
CATGCTGGCCCCCTGCCCCCTGCTGAGGCCACTGGAGCCCCCTGGAG
AAGCCCCGGCCCCAGCCGCTGAGCTGGGAGAAAGTGCCCCAAGTCCCAAA
 Ggtgagaggggctgggcagggaggggagggatccgtgggttagggcgtgtc
 cagggcaggtctcaaaagcctttgctgggcccaggtgagggtggctcagggc
 tataatccccagtagctttgggaggccgaggtgggcccagatcatgaggtcag

gagattgagaccatcctgggtaacatgatgaaacccccatctctactaaaa
atacaaaaaaattagccgggctgggtggcgggcacctgcggtcccagcta
acttgggaggctgaggcaggagaatgggtgtaacctgggaggcggagctt
gcagtgagccgagattgtgcctctgcactccagcctgggtgacagagcaa
gactccatctcaacaacagaaaaagcctttgctcacagGGTCAAGCTC
AGCAGCTCTCAATGGTCCTACCCCTGGAGCCCCGATGACCCCAITGGCC

ex4
c. 440C>T (P147L) ; c. 442G>A (G148R) AG
c. 461T>C (I154T) ; c. 464G>T (G155V)
c. 466C>G (L156V)
c. 472G>A (V158M) ; c. 479G>A (R160Q) AG
c. 492C>T (G164G) DG ; c. 502G>A (V168M)
c. 505G>A (G169S) DL, DG

TCTTCGTGATGCGGCCACAGGATGGCGAGGTGACCGTGGgtgagtgag
ctgctgtgccagcattgggggtgggaagggggggcagcaggacactcccc
aagccgggctgtcgcccctgcctttgagGTGGCAGCATCACCTTCTCA
GCCCGCGTGGCCGGCGCCAGCCTCCTGAAGCCGCCTGTGGTCAAGTGTT

ex5
c. 529C>T (R177C) ; c. 530G>A (R177H)
c. 532G>A (V178M) ; c. 553A>C (K185Q)
c. 560C>G (P187R) ; c. 565G>A (V189I)
c. 581G>A (G194D) ; c. 596T>C (L199P)
c. 598A>G (S200G)
c. 631G>A (D211N) ; c. 649A>G (S217G)

CAAGGSCAAATGGGTGGACCTGAGCAGCAAGGTGGGCCAGCACCTGCAGC

TGCACGACAGCTACGACCGCGCCAGCAAGgtgggtccaccggggctcgtgg
agacacggagagaggggacatggagagccctagaaggcacaaggcacaca
gagggcacatgagacccagaggcacacacgagctgcaagcaaggggtgt
ggggaatctgggaggcaggtggagggggccagggggccacagggagatccc
ggaggcctggggggcagggagtgcatgaggtcatgggagcactgtcgg
ggacctgggagacttgggtggacatgatcacctcaagggggcacctaataa
ggtttggccgggggtggggggtcgcccaggggtggtcaggaagcctggagg
acactgtgaagcagggggcaccagctagtgggggtgtaaagcccctgga
tgggtgagatcagggctaagggctcaagggactctcagggattaaccag
aacaattcctcattatacagacacggaaccaaagccttgagaggttaagt
ggctgctccaaggtcacttagacatagcctagaaccttaagccttcggt
ttttgtgttttgtttttttccgcccctgcccaccagaaccttaaggcttaa
gtccccctgtttgttactccaagcctctgcttttcccaaccttccccag
tcctgggctaggcaagggggcctctagcaagagaggccaacatgttctgc
tgtgccccgtgtgcattgcacaaaagcctgtatttcaccacaacctatgt
gccagcagatggcaatcatgggtttcgagatagtcccctttctctgtaca
aaaactctgtatgggttaactaaagcctgaggggtgcgaagatcgatgagc
atgtgtcactcccagcctcctttaaataatataatataatataatattga
gacagggctcgcctctgtcgcctcaggctggagtgagtggtcaatctcg
gctcactgcaacctccacctcctgggttcaagcgattctcccacctcagc
ctcccagtagctgaaactagaggtgtgcaccaccataacttggctaattt
tcgatttttttagtagagacggaatttcaccacggttggccagggctggtc
ggagctcctggtcttatgtgatccgcccgcctcagcctcccaaagtgggg
attacagggctgagccaccgcccggccactcccagctctcctttaaggg
tgccgagccttgtctcccggccctgggtgtccctgacgcccctcctc
catgcacacagCTCTATCTGTTGAGCTGCACATCACCGATGCCAGCCT

ex6 c. 655G>T (V219F) AL
c. 659A>G (Y220C) DG ; c. 667G>A (E223K) ;
c. 682G>A (D228N)
c. 706A>G (S236G) ; c. 742G>T (D248Y)
c. 768C>A (V256V) ; c. 772G>A (E258K) DL, AG

GCCTTCACTGGCAGCTACCGCTGTGAGGTGTCCACCAAGGACAAATTTGA
CTGCTCCAACCTCAATCTCACTGTCCACGgtgagggggccctgggtgtctg

tcctgggctcgggctccccatgggtcctggtctcctacctccttttccca
acactaaggaggatgcctcgtcccatccagacatgagtgctggccacgtg
cccagtgctgcacacacaggggtgtgagagaaacccaaggcttgcaggg
aggcgtgggggcttagggctgagtcgggtctcatctgggtgggactctg
tttatcatcttgggtgtcacggctcctggccatggcctggcactgtctg
aatgtttgggcatgggtgaaggtgagttgagagatgggtgggaattggg
gacaataaacctgcccacctgcctgggtaccttgacctgggaaaggctgg
gaaggtgagatcctggggcagatgccagcctcatggggtcatgaatggg
caagtctgtgaatactcagaggccgccccagggcagggcttctcaaacg
gccccctctgaagccccttccccatctctccacctttgaaccagAGG

ex7
c. 817C>T (R273C)

CCATGGGCACCGGAGACCTGGACCTCCTATCAGCCTTCCGCAGCACgtga
gtggccatcctcagggcctgggggaggccagtgctggagctcagggcct
tcagggctcgcactgggggtcagggctggggatgatttgcggggcggagc

tgaagtcagtgggggctgcaggggagagcaagcttcccagggcaggtgagg
 atactgagtcctaaccacacagGAGCCTGGCTGGAGGTGGTCCGGCGGATC ex8 c. 833G>A (G278E)
 AGgtaccacctgccccagggccctacctgcacatcccgagacccccagggg
 tctgagacgggtgggagcccaatctggctagtgtcccttttccctcccc
 actccactcccactctgtcctaatacctttccagtcctcactgcagcc
 tcaactgggggtccctctccatagTGATAGCCATGAGGACACTGGGATTCT ex9
 GGACTTCAGCTCACTGCTGAAAAAGAGgtgagtcctgggtggcagttcct
 ggggcagctggtgaggcctggctccaaatcccagcactgtggtttgcccag
 ctgtgtgacctgagcacaactgcacctctctgagttggtttctctgt
 ctgtcgaggggatcccagtggtggaaggagttaaagggctctgcagac
 attatgtcccgtcaacagtcctcctcacagtgctccccacggccactcca
 cacttgaggctgcaaaagctccctccgtaaaactccggggagccagaagga
 acagagagaggggtccccagagctgcaggggtctaccaggtcggcccaactg
 acttatgttctctctgcccctctctcctctcccccgccccctccatta
 tggctgctgctgctgtggcccagAGAgtagaatcggggctctgggtgttt ex10
 gggggcggcagggcgctggtgggtgcagaggggattcccgtcccctctct
 gagaggctgtggtgagagactcagagcaggggtgcccgtccccacggacag
 ggggtgagctctctgtgcccctgggcttctcctgccacccacctatctgtcag
 agcttaggagggataagaaaaagtaatgcacacagggaggtcctgccagag
 cctccggagcagcatgggtgccccacaacacagggagtgcaagtgcggaa
 aatagggaggaagtaaggcccatgggtgggggtccaggtctttgagggaa
 ggtggccatacctctcatgtgccacctacccttttccccacccccacccc
 tggagcagCAGTTTCCGGACCCCGAGgtgagtgcccaacatagcagca ex11
 cctcatcacccttaattctgccaggagcccctccagatccccagcccct
 cttcagctcccctggccccagtcctgcccctggcctgggacccagagcagc
 tccagctggccccaccagaaggggaaggggagaggggacaggggtggctaca
 gctccttggctcctggcccaggaagcccggcccagggggctgcagctcttg
 cccccggccacagcctagactgcccggacacagGGACTCGAAGCTGGAGGC ex12
 ACCAGCAGAGGAGGACGTGTGGGAGATCCTACGGCAGGCACCCCATCTG c. 977G>A (R326Q)
 AGTACGAGCGCATCGCCTTCCAGTACGGCGTCACTGACCTGCGCGGCATG
 CTAAAGAAGGCTCAAGGGCATGAGGCGCGATGAGAAGAAGAGCACAGgtta c. 1052G>A (R351K)
 gcccttccctcagaggggagaggagagggcacaggttagcccttccctaca
 caggagaggagagggcataggttagcccttccccacaggggagaggagag
 ggcacaggttagccccccacctcgtccacatacatggaaagagcggagtc
 cggcttagcacagagactcacaggaaagaagagcccaggttaaccctcc
 ttgtgtagaaaaagccaagaatgccaggttagcccttaccacagagat
 agaagagaagagcaaaagttaggccaggacagccacaaggaaaaggacag
 agctcaggttaaccctcctcaccaaggaaaaatcaggctacactttcttt
 ctctaccctcttctgaaaagaaatgaagcccgggttaaccctctccacacc
 caaaagaaaagggaagagggcccgttaagcctggagagccacacacaggca
 aagaaaagagcctggctaattcttctctcaggcaaaacaaagcaggagggc
 ttgggttaactaccctcacccccaggcagatggaaagaggagagcccagg
 aatagcccttctccactgaggggttgacaagggcgggtgtgagccgggaa
 agcaggggtctcacatgcccctctccccaccatgtctgggtctagcacagg
 gcctggcacacacctcgagcgtctataaacaccgactgaatggaggggt
 cagcttccatgcaggatatgggagacaagcccctccaaagcacacacac
 aaaacacacacgatcatggggaggggagaggagctgggttagtccctccc
 tgctgacctccccaggccccttatccctctgcccctgcccctctgtgtc
 tcagcctcactgggtttcccatcaccctcctgctaggtggcctggccctt
 accggcacctggcccatttaagccagggatcccctgaatgccaccaat
 gttcctctgggttaactcctgaactgctgagcccagagggcaccacagcaa
 aggactgtaggtgccaaggaggaaaagatggaggctggcaaggcagatg
 gggacctccgagggtaggggtgtcttccaggaatagcaacaacagtaaaa
 agagcaaatgtctggccaggtgcagtggtcacgcctgtaatcccagcac
 tttgggagggccgagggcaggtggatcacctgaggttaggcgttcaagacca
 gcctgaccaacatggtgaaaccccgtctctactaaaaatacaaaattacc
 tgggcatggtggcaggcgccctgtaatcccagctactccggagggctgaggg
 aggagaatcacttgaaccgggaggcagaggttgacgtgagtcaggattg
 tgccattgactccaacctgggtgacagaatgagactccatctcaaaaaa
 agtgagtgagttccttccctaaagccagccactaggtgctttatgtaattat
 ctatttaattctcgaacaacactatgatggaaggactattaccatttc

catgttactgaggaaccgagggcacagaggggtttaaggaactagcgcaag
gtcacagagcaccagcagtagatctctgcccctccgagctgactccag
gcccagccagagtatttgaggactcaggggtccttctctgctcgggtgat
ggagccccacttccctcctgggctcagcagcagcaacatgggcttttac
aaacacggccgcaagaggaggcattggttgggagcagggctgggctcaag
accagctctgccacacacctgctgggctgggtggcattgggcccagtcgcc
tctctgagccctatttccccactgcagcagcatggggaccaccgactg
gcctgggggctgagatgggagtgagagtgctgggacagagggctgcta
gggggagcgcctgggaagagtacacaactcaggggttgctgagagaaga
gaaggcacagctgtcccagcttctcctgacaagcttctgtcttctc
tgaagcccctaaccatccctgagctgagcaggtggagaggaccccaa
ggaagacagaaggacaaggtcagacagacagagacaaggaggtgggtga
cacatagacacagataaagaaatgaagacacatgcctgtaatcccagca
cttgggaggctgaggcgggcacatcacctgaggtcaggatttcaagacc
agcccggccaacatggtaaaaccccgtctctactaaaaatacaaaaatta
gctgggctggtggcacatgcctgtaatcccagctactcgggaggccgag
gcaggagaatcacttgaacctgggagggcagaggttgacagtgagccaagat
ggcgccattgcactccagcctggccaacagagcaagactctgtccaaaaa
acaacaaaacagacaaaacaaaacaaaagaaatagagacacagaga
agtgaagcggggcgccacagaggggattggaggggggacctgggccc
agccacagccacagtagcttggcctggggagcaggggtgcgggcgggtggg
gtggccggggctgaggggtggtgctcagCCTTTCAGAAGAAGCTGGAGCC
GGCCTACCAGGTGAGCAAAGGCCACAAGATCCGGCTGACCGTGGAACTGG

CTGACCATGACGCTGAGGTCAAATGGCTCAAGAATGGCCAGGAGATCCAG
ATGAGCGGCAGgtgcagcctgggggtggggaggggggctcgggtggaggtg
gggacccccatagccttgctcctcctgcccctctccacatgcgtatctctga
ctcgggtggtctcagccccatctctctgggctaatttcccatccttt
tgctcctgcccgtccctctctctctccttttctcgggctcacttcc
tcccgtcgggaacacttcaacggccccttctgttctacagCAAgtaaagt
ccctctggatggccttgggggtggggggcacagggattatcatggggcgca
ctgggcccggaggggtgtccgcagcttctcctgccacttccctgcggcccc
caccagGTACATCTTTGAGTCCATCGGTGCCAAGCGTACCCTGACCATC
AGCCAGTGCTCATTGGCGGACGACCGCAGCCTACCAGTGCCTGGTGGGTGG

CGAGAAGTGTAGCACGGAGCTCTTTGTGAAAGgtgggctgggacctgag
gatgtgggaacctggggagggatggcctcaggggagccaacctcatgc
tcaccctgcctggacagAGCCCCCTGTGCTCATCACGCGCCCCCTTGGAGG
ACAGCTGGTGTGTTGGGGCAGCGGGTGGAGTTTGTGAGTGTGAAGTATCG

GAGGAGGGGGCGCAAGTCAAATGgtgagttccagaagcaggggcatggg
tgttgggggcatctgccagaagaggccacagcacttgcaccccaccac
ccggtcagGCTGAAGGACGGGGTGGAGCTGACCGGGAGGAGACCTTCAA

ATACCGGTTCAAGAAGGACGGCAGAGACACCACCTGATCATCAACGAGG
CCAATGCTGGAGGACCGGGGCACTATGCACTGTGCACTAGCGGGGCCAG

GCGCTGGCTGAGCTCATTGTGCAGGgtgagcctggctgggggggacatg
aggctttagggcttggaccctcagccccaccccacctagccctgtagg
ggagcaggcaaacctgggctcaaggcctctgtgaccttgggctttgaca
gcctaaacctcatccttctcatctctaaaatgacgatgctgaggtgaccg
ctccagagggtagaggggtcatacgggctggtgagcatcaccaccc
ctcagacacttgaggttcccttatgtgactgcacatcacaggcaaacat
ggcacacacaggcacacgtgttttccatgcccacatgcaccagacag
tgcgaccagcgccccatgggcccacagccctccacagggattcagcca
caccacacaccctcccagctcaatggctctgccttgcctgagAAAA
GAAGCTGGAGGTGTACCAGAGCATCGCAGACCTGATGGTGGGCGCAAAGG
ACCAGCGGTGTTCAAATGTGAGGTCTCAGATGAGAATGTTTCGGGGTGTG

ex13 c.1112C>G (P371R)
c.1113G>A (P371P) ; c.1128C>A (S376R)
c.1144C>T (R382W) ; c.1153G>A (V385M)

c.1213A>G (M405V) DG; c.1219G>A (G407S)

ex14

ex15 c.1255C>T (R419C)
c.1287G>A (A429A) AG; c.1293C>A (D431E)
c.1294G>A (A432T) ; c.1309G>A (V437M) DG
c.1339C>T (L447F) ; c.1343T>C (F448S)

ex16 c.1369A>G (T457A) ; c.1373G>A (R458H)
c.1386C>A (D462E) ; c.1408C>T (R470W)
c.1412T>A (V471E)
c.1445C>T (A482V)

ex17 c.1466A>T (D489V) DG; c.1468G>C (G490R)
c.1483C>T (R495W) ; c.1483C>G (R495G)
c.1484G>A (R495Q) ; c.1498A>C (K500Q)
c.1504C>T (R502W) ; c.1505G>A (R502Q) AG
c.1519G>A (G507R) ; c.1544A>G (N515S)
c.1553T>C (M518T) ; c.1564G>A (A522T)
c.1565C>T (A522V) ; c.1591G>C (G531R)
c.1591G>A (G531R)
c.1608T>A (A536A) ; c.1624G>C (E542Q) DL

ex18

TGGCTGAAGAATGGGAAGGAGCTGGTGTCCCGACAGCCGCATAAAGGTGTC
CCACATCGGGCGgtgagtggtgcagggcaggtggatgggacaggtggagac
tgagatggagacagagagagacacagggagaaacagagagagagagataa
agacaggtggacagagaggcagatgcacagagacaggacagagactgaga
cagagaccacagagaggagaaaacagacagaccacaaaaagacaaagaga
cagaaagacagaaatagttctatagagacagaaagatatgcacagggagg
cacacacataggagagttcgtcagagacagagaagaacagagggacagag
acaagaggcagcagggagagacacggacggggtcgagcgctccccagca
ccctccccagcttgtgaccagggcagggcagggaggccaccaaggaggcc
ggctctggccagaggccctcactgcctctcccgcctcttctgctcatccct
ggagcaactgggtggtggcgtgctggggccaagttcacagagattaatgag
accagccccctgccagctccaagggcccagccaaggagatgctttgat
gtagaaatcacttttacgctgcctacctctgaaggcacattaaaaagctg
gaaaattagataatatagaaaaaaaaaggcatttttaaaaatcagaatac
caacaagccaggacaaggtgagggcctcctgggaccctggctggggatc
tggcaaggccaggggtgtgtggcccagtggggtccctgagccactgctc
ccctgcagGGTCCACAAACTGACCATTGACGACGTACACCTGCCGACGA
GGCTGACTACAGCTTTGTGCCCGAGGGCTTCGCCTGCAACCTGTCAGCCA
AGCTCCACTTCATGGgtgagcctgctccagggtaggggtgggtcggggcag
tggggccaggagccccctgtcactgggccccctgcctttgccccctgctact
tgctcttccctctcttgcagAGGTCAAGATTGACTTCGTACCCAGGCAGG

ex19 c. 1828G>A (D610N)
c. 1880C>T (A627V)

ex20

gtaagtcttggggccccctgagtccttggttctgctcactttcccgcacccc
accacgcaggcctccccctccactcacagaggggaagagcaaggatcaaaa
gtgggggtcctggggcccagcttcagctttgccactcatgacctgggtc
aattataatctctgtgagcctcagtttccctcttctctaaaaatgggaaccc
tgatagtgccacctcataggatagttataaagatgaggtgacatgatgta
tcagacctgtcaagtgtgctcacatgtgtgactgtttattattacatctt
tcttcttcttccctttttttttttattttttttttttttttttttggagcggagtctcc
ctctgtcgcacagctggagagaagtggcgcatctcggctcactgcaag
ctccgcctcccaggttcacaccactctcctgcctcagcctcctgagtage
tgggactacaggcgcggccaccatgccagctaattatTTTTTgtattt
ttagtagagacgggtttaccatgttagccaggatggtttcgatctcct
gatctcatgatctgcctgcctcggcctcccaaagtgtgggattacaggc
gtgagccactgctcagactgctttgtttgttttaactgagggcagatt
cctgattttatTTTggccagggaacctttttaatgtgtgcatgtgtgctgc
atgtgtgctgcgctgtgtgtgtgtgcatgtgtctgtgtgtgtatgtat
atgtgtgtctgtgtctgtgtgtgtgctgtatgtatgtgtattttgtgtct
gtgtgcatgtgtgtgtctgtgtgtgcatgtgtgtatgtgtatgtgtgtct
gtgtgtatgtgtatatgcgtgtgtgtgtgtgtattgtgtgtgtgtgtatg
tgtgtggcaagacactgatgtttccccagttttcaaaatgctatgctagg
tgacctgacctgaatattacaagcctcccagccaacgtcctgggggtgatg
ggaatgttcagatcttggttggattaataattgcatgggtgtattcatc
tgtcagaactcagcctactgtcagatctgagcataaaactataacctcaata
caaactcaaaaaaccaataaccagggggcccaggctcttgagcagccccgc
cccagtgacctgtgctcctcctctcctcctcctcctcctcctgaactacattg
tgtcttctgcaagAACCTCCCAAGATCCACCTGGACTGCCAGGC CGCATA

ex21 c. 1934C>T (P645L)
c. 1939A>G (I647V) ; c. 1960C>T (R654C) ;
c. 1961G>A (R654H)
c. 1979T>C (V660A) ; c. 2011G>T (V671F)
c. 2035C>T (P679S) ; c. 2056G>C (A686P)
c. 2063C>T (T688M)

CCAGACACCATTGTGGTTGTAGCTGGAAATAAGCTACGTCTGGACGTCCC
TATCTCTGGGGACCCTGCTCCCAGTGTGATCTGGCAGAAGGCTATCACCGC
AGgtactgtgggtccctcctcagtcctcccatctataagatgggtgtgtg
gaaccagccaagtgttaggacctgctgcacacccccaccacatgtgcacg
ccctgctgttggctacccccatgggagagactgggtcagggggcaggcaagg
tgggcagtggtgggtcaggggtggaagaagcagcagagggggcgctccag
gctgagtcagctcctctgctccctacttccctcctgcctgttcccagGG
GAATAAGGCCCCAGCCAGGCCAGCCCCAGATGCCCCAGAGGACACAGGTG
ACAGCGATGAGTGGGTGTTTGACAAGAAGgtgagtgagactgaggtcagg
aggaggctcgtttgtctttcatcactttctacctacgtgggtgcccagagcc
ttggcgaggtctccatggagggtgccacacttggccgggtgtgttctgctgcc
cccagcagggtccctgtggggccccctcacacctcaggcagaggggtctctgt

ex22
c. 2077G>C (A693P)
c. 2139T>G (F713L)

gaagtgtgctgatggccatcacaaggatgtggacaccctctcattgccag
gaagccctcatgactgggctgctccctggctcccttcatcctaagctgac
cttgaccttgaccttgtgctccctctcaactcaggagtagtttctgagac
acttttctgccagtgtagctgccgggtcttgctcctgcctggcactggt
ggttcttctgaaggctggggtcttgaggggtcctcatgatagctcatctg
agaggacagggtggttggcccagggtcccgtgacaaagctagaaccggagcc
cctgccctcagtcgggtgccacagagatgattttgaaactagatgctgacgt
ggatgcagcttcccacaggctgtgttccccccatggacccccgggacat
ctggctgttggcggaggctgcaagggcctctggggctgacttggatctc
accccaactctgcacccccccagCTGCTGTGTGAGACCGAGGGCCGGGTC
CGCGTGGAGACCACCAAGGACCGCAGCATCTTCA CGGTTCGAGGGGGCAGA

GAAGGAAGATGAGGGCGTCTACACGGTTCACAGTGAAGAACCCTGTGGCGC

AGGACCAGGTCAACCTCACAGTCAAGGTCATCGgtgaggccggccggggt

ccaagctggagaacacagaggggagccccaaggagggcccatccgttcg
ctcattcagccactcgacaaacatcacgggcatgctccctgagccgagcg
gcaacaggacagggttttctgccc aaaaggagccccgctctgggggagat
ggaggcagatgcatccagcagatttctgacactgctgtacatgagcc
atgtccagagtgcctttaggaggctgagaagatgggtgaggaaggcattcccag
gcagaggaactgtgtacaaaggggtggaggagggaaggcccttttggg
tgtggagaatgaatgaaacatgtcaggagaggactgggtggggttgggag
gatcagagccaggacaggggtgaatatgggcagtgagaagcctaaaggg
ttgacggaggctggcgacatgatcagaaatgcatcctggtgagaccag
cctggacaacacagtgagactccatatacactaaaaaaaaaaaaaaaaaa
ggaaaagaagaaagaaatgcattctagaaagatctctttggatctggggg
tgggtgggggagcctgtggcggttagttggagtgggaaggggacgagcaa
cgttactcaaggccctgagcggggcagggctgatgtgggtccatcccacc
ccatccagACGTGCCAGACGCACCTGCGGCCCCCAAGATCAGCAACGTGG
GAGAGGACTCCTGCACAGTACAGTGGGAGCCGCCTGCCTACGATGGCGGG
CAGCCCATCCTGGgtgagtgaaggccaccggatggaggtgtgagggcgc
caaacagatccgagggaaaggtggtgtggggatgcctgggttccagaccag
agctgccacctcccctgagccagGCTACATCCTGGAGCCCAAGAAGAAGA
AGAGCTACCGGTGGATGCGGCTGAACTTCGACCTGATT CAGGAGCTGAGT
CATGAAGCGCGGCGCATGATCGAGGGCGTGGTGTACGAGATGCGCGCTA

CGCGGTCAACGCCATCGGCATGTCCAGGCCCAAGCCCTGCCTCCCAGCCCT
TCATGCCTATCGgtgagcctgcctggcctggtcctgccccccgccccctc
cccagttaaaaacctccaataatagcagggtgctctgcaggcagccatgct
agacactcacatccacagtcctcttccatcctcgactggggatactcagc
cgattttacagatgaggaacaggctccaagcagttaaatgacctgctt
gagatctcccagctgggttgggggtggagctgactctcacactacgcccagc
cctagttcacgtttcaagcctctctttccatgtctacaaaatgggaataa
tgacactgcctatctcagagagctgttaggatgatatgggatgaccaggc
aggccatctggcatctaacagggtgctcaataaatgttctattgtcccctgt
tctccacacccttcaaccagggttttccatgaggatggggcaagggc
tgtagtttagtggaggggtctcaggggcatctgtctgtggaaagagtcctg
gaccaagactcagagatggcagaggcagctccatgggtccccggggggcca
actggagtcatccctccctgaagcctcagcttccctcatctgtataatggg
gtctgagtgggcagaacagggtgttgagactgtggcagggctcaggaggac
acctgttcccactagggtgggtgagtcggggggcagctgcctgtggcaag
ggcaggccaaggaccctgggcccagggtggggcacagcttgggaagat
ggcaggaaatcggggcctgtgggggagaagggtccaggcctctcgttttagg
gactgattcctggtttgttcagttcttagtcaactcacctaatacacaagc
gccaggaaattcccagtttctgtagtttttagttttttagtttttttttt
tttttttttttttgagatggagatctcgcctctgtcaccagactggagtg

ex23 c. 2155T>C (C719R) **DG**
c. 2176C>T (R726C) ; c. 2197C>T (R733C)
c. 2198G>A (R733H) ; c. 2210C>T (T737M)
c. 2213T>G (V738G) ; c. 2217G>A (E739E) **AG**
c. 2234A>G (D745G) **DG**; c. 2246A>G (Y749C)
c. 2249C>T (T750M) **AG**; c. 2252T>A (V751D)
c. 2269G>A (V757M) ; c. 2273G>A (G758D)
c. 2286C>G (V762V) **DG**; c. 2288A>G (N763S) **DG**
c. 2300A>G (K767R) ; c. 2308G>A (D770N) **DL**
c. 2308G>C (D770H) **DL**

ex24 c. 2374T>C (W792R)

ex25 c. 2429G>A (R810H)
c. 2458C>T (R820W) ; c. 2459G>A (R820Q)
c. 2498C>T (A833V) ; c. 2503C>T (R835C) **DG**
c. 2537T>A (V846D)
c. 2573G>A (S858N)

agtcctggcgcgatctggggctcactgtaaccttcacctcccagggttcaag
 caattctcccacctcagccttctgagtagctgggattacaggcatccacc
 accatgcccagctaattttttgattttttgtagagacggagtttcaccatg
 ttggccaggctggcttgaactcctgacctcaggtgatcctcccacctcg
 gcctcccaaagtgctgggattacaggcgtgagccaccgtgcctggctgct
 gttgctgtttgttttaagccaatctacagacatgtcttgtaacagggac
 aaaatattccttaaagtggccaaaagccagctgaacaggaagtgccccct
 atgtgaccagtgggcagttcagagcttagggcatggatctccagcttccc
 caggettgtcagaccctctgacctctcctctgcccag**GTCCCCCA** ex26
GCGAACCCACCCACCTGGCAGTAGAGGACGTCTCTGACACCACGGTCTCC
CTCAAGTGGCGGCCCCAGAGCGC**GTGGGAGCAGGAGGCCTGGATGGCTA** c. 2686G>A (V896M)
CAGCGTGGAGTACTGC**CCAGAGGGCT**gtgagtgccccgcccccaacccc c. 2728C>A (P910T)
 cctcccaaaggaagaacatgctcaccttgccattgagcagattcacctg
 tagtcaagtttttaggccacttttgcgaaagttgaggacaccagag
 aaatatctgtcctgttttcagaagtaaaaaagcttgctagtgaaaaaca
 aatgcagagtaagctgactgtaacacttctttgagcagtgcgaaatcag
 caactacattttaaaaacatatttaaggccaggcgcgatggcttacgct
 gtaatcccagcactttgggaggccaaggtgggaggatcacctgaggtcgg
 gagttcgagaccagctctgaccaacgtggagaaaccccgtctctactaaa
 atacaaaattagccgggtgtgggtggggcacctgtgatcccagctacgc
 gggaggctgaggcaggagaatcacttgaactcgggaggcagaagttgcgg
 tgagccaagatcatgccattgcaactccagcctgggagacaagagcgaaac
 tccatctcaaaaataaataaacaataaaaaatttaaaaaacatattta
 atcctggagattcctatcagaggagtgggcagtgaggagtggggtgctcagt
 ggtgacacagctgtggccttgctccccctccccaccaccag**GCTCAGA** ex27
GTGGGTGGCTGCCCTGCAGGGGCTGACAGAGCACACATCGATACTGGTGA
AGGACCTGCCACGGGGGCCGGCTGCTTTTCCGAGTGC**GGCACACAAT** c. 2834G>A (R945Q) AG
ATGGCAGGGCCTGGAGCCCCTGTTACCACCACGGAGCCGGTGACAGTGCA
GGAGATCCTGCgtgagtgccccctttgtgagtcacaagaccgccattga
 cccccaggcccttgggtgtccagtggagggtggggacagttggggaggccc
 agaatgctctgccagaacgctgggcagagacaggaggggttgagccat
 cgtccatgcttaggccttagggaaaaagtgagagaggggtggccaggcac
 agtggctcaagcctgtaatcccagcactttaggaggccaaggcaggcaga
 tcaactgaggctcaggagtttgagaccagcctggccaacatagtgaaccc
 tgtctctactaaaaatacaaaaactagccagggtgtgggtggcgcgctgctg
 tagtccctcaactacttgggaggctgaggcagaagaatcgcttgaccg
 ggagggtggcagttgcaatgagctgagatcacactattgcaactccagctctg
 ggtgacagagtgagacaacgtctcaaaaaaaaaaaagtgagaaagggc
 tctcttgggtgatgtcagtccttagttctggaacagggaagtaaaagc
 cacagtaccaagctctctccaggagtgctcagctccaacaggtaaat
 attgtctatgtagtcagattgggtccctctgggatccacttcccattcctt
 tgttccctgtcccacaaaggggtccatcttttgaaggattgggttctcaa
 agctggaacgaggcagcaaaactcaggtggttaacaacacagggcatagggt
 gtcaaagcccaggcttacacctggctctatgacttactagctgtgtgact
 tcagtcaagttgcttacctctctgatccctgccttttgaagtgggtgagg
 ctggggaagccagctgggcttgggcagcctggagttgctgtgttagcag
 gagctaaaggaggcgcagggcccagcaggcagcttttttcttagctgcag
 ctctctgggccttgtctcaaggagggttgagctgtggagcccctcagag
 ctgtggcgggcccctcacttagctaccactctatacccacag**AACGGCCA** ex28
CGGCTTCAGCTGCCAGGCACCTGCGCCAGACCATTGAGAAGAAGGTCCG
GGAGCCTGTGAACCTTCTCATCCCTTCCAGgtgggactggcccccttcc
 ctgtccccaggggagagaggctatagtgtgttggttcccatccagtgagc
 tgatgtctcagggtggcctgatctgaggtaccagaggctgggggtggcgg
 ccggcccttggagtgatccaggttcagggttaagcttttccctcccctcag
GGCAAGCCC**CGGCCTCAGGTGACCTGGACCAAGAGGGGCAGCCCCTGGC** ex29 c. 3004C>T (R1002W)
AGGCGAGGAGGTGAGCATC**CGCAACAGCCCCACAGACACCATCCTGTTCA** c. 3064C>A (R1022S) ; c. 3065G>T (R1022L)
 c. 3065G>C (R1022P)
TCCGGGCCGCT**CGCCGCGTGCATTACGGCACTTACCAGGTGACGGTGC** c. 3106C>T (R1036C) AG ;
ATTGAGAACATGGAGGACAAGGCCACGCTGGTGTCTGCAGGTTGTTGgtg
 gtggccaaggcctccttgagcccccttgtttcccttccctgggctgggct
 gctggggccaagggtggggccaggggacccaaccacagctcacattttc

cagtccactgccccagcaggcctggccctgggtggcaggggtgggggtggt
ccctggagccagtgacccccctgctcactgtcaggaggcgtggtgacccaa
ctgggtctgtctcccgcag**ACAAGCCAAGTCCTCCCCAGGATCTCCGGGT** ex30
GACTGACGCCTGGGGTCTTAATGTGGCTCTGGAGTGGAAGCCACCCAGG
ATGTCGGCAACACGGAGCTCTGGGGGTACACAGTGCAGAAAGCCGACAAG
AAGACCATgtgagcccagggtctgggggtccccacgtgcaccctgctag **c. 3330G>A (M1110I) DL**
gcccggcagaccagggccgcagctacccttactgtcctcaccgtggacc
cctcaccctccctctgctgatctgaatccctccatagtaggggtggagat
gccaagggcaccagagaggtctctggcatcaggaagggcctggcccag
agatgctcccctcccctcccag**GAGTGGTTCACCGTCTTGGAG** ex31
CATTACCGCCGCACCCACTGCGTGGTGCCAGAGCTCATCATTGGCAATGG **c. 3392T>C (I1131T)**
CTACTACTTCCCGTCTTCAGCCAGAATATGGTTGGCTTTAGTGACAGAG **c. 3413G>A (R1138H)**
CGGCCACCACCAAGGAGCCCGTCTTTATCCCCAGACCAGgtgctgtaccc **c. 3472G>A (V1158I)**
tcattcttccaaccaggggtggtggggcagggaggctgtgggaacagggaga
ggggcctagctttgtgtggccctctcggtagcaagtcctgtcaccaacag
GCATCACCTATGAGCCACCCAACTATAAGGCCCTGGACTTCTCCGAGGCC ex32
CCAAGCTTACCCAGCCCCTGGTGAACCGCTCGGTTCATCGCGGGCTACAC
TGCTATGCTCTGCTGTGCTGTCCGGG**G**TAGCCCCAAGgtagggaaacttta **c. 3617G>A (G1206D)**
ggcgtggtccaggccgaccaggaggcagggctcacaggccccgacgttg
agcagtcctctcccagcctgtctcccctgctttctctccacctgggggt
gtatggaccgggttccctcccctgggcagggccatggtactcactcttg
ttccatgtttgtttccagccttgggcatagtcagggactctcgtgggacc
ccccagtagaaacacagatgtgtctcccctgggtcccctgccaggtcccct
ctcagcctggatggcttcccctcccctctctttaccttatttatag**CCCAAG** ex33
ATTTCTGGTTCAAGAATGGCCTGGACCTGGGAGAAGACGCCCGCTTCCG **c. 3682C>T (R1228C)**
CATGTTACGCAAGCAGGGAGTGTGACTCTGGAGATTAGAAAGCCCTGCC **c. 3709A>C (T1237P)**
CCTTTGACGGGGGCATCTATGTCTGCAGGGCCACCAACTTACAGGGCGAG **c. 3751T>C (Y1251H)**
GCACGGTGTGAGTGCCGCC**T**GGAGGTGCGAGgtgaggagccctcggggcc **c. 3790T>C (C1264R) DG ; c. 3803T>C (L1268P)**
agggcctgggagatgggaagagcgggcggcagtggggaccctgggctttg
ctccgttgcctcggccaagcacctgccctggctgcaagggcacggacc
tgccacgcccagatgggcaatagcttccagaaggctgggaggacacagtg
acatggcctcctcttctgag**TGCCTCAGTGA**CCAGGCTGGCTCCTGGGG ex34
ATGGCCAGgtatgtaccacccgacacccagggcacaagtcaagtggctgag
ccctggcccttggctcctggggcagccatcagtaaattgggaggctgtaggg
gccctccattcactcgtgaagataacctgtgttcagGTACAACCGGATGC ex35
CAGCCCCGTGCCAGGAGCCTGGAGGGAAGTTGGGGAAACCCCTCCCTACT
GTTGGATGTATGTGTGACAAGTGTGTCTCCTGTGCTGCGATGGGGGATCA
GCAGGGCAGTTGTGCGGCAGTCTGAGTGGGTGTTGCACAGACTGGTCCA
CAGGGCTCCTGAAGGAAGCCCCTGGATCTTTGGGGTAAAAGGAGGGTGGC
CTCAAGAAACAATGTCTGGGGACAGGCCTTTCTGGCCTGCTATGTCTTCC
CAATGTTTATTGGGCAATAAAAGATAAGTGCAGTACAGAGAACTCACTC
TTCTCA

Supplementary Note S2. Statistical tests for the association of cMyBP-C haploinsufficiency drivers to pathogenicity.

In the case of alterations of RNA splicing, we considered all variants for which native splicing sites were detected (40 pathogenic with 11 predicted alterations and 22 non-pathogenic with 2 predicted alterations). Among those, 6/8 pathogenic mutations and 0/2 non-pathogenic variants had confirmation of altered splicing (**Table 1**). If we exclude the three positive predictions that could not be assessed experimentally, the contingency table for statistical testing would be:

	Non-pathogenic variants	Pathogenic mutations
Alteration of splicing	0	6
No alteration of splicing	22	31

$$p = 0.046$$

We can also consider expected validation rates of those mutations. Among them, c.292G>C (p.E98Q) is predicted to cause a splicing site loss (86% validation rate considering pathogenic, non-pathogenic and variants of uncertain significance, **Tables 1,2**), while c.2834G>A (p.R945Q) and c.3790T>C (p.C1264R) are predicted to cause a splicing site gain (13% validation rate considering pathogenic, non-pathogenic and variants of uncertain significance, **Tables 1,2**). Hence, we predict that at least one extra variant could be verified if access to blood samples was possible for these mutants. The final contingency table for statistical testing would be:

	Non-pathogenic variants	Pathogenic mutations
Alteration of splicing	0	7
No alteration of splicing	22	33

$$p = 0.037$$

In the case of protein domain destabilization, bioinformatics predictions are available for 21 pathogenic mutations and 12 non-pathogenic variants. Experimental data were collected for the three mutant domains with the highest predicted destabilization in both groups. Six more mutants per group were experimentally studied in domains for which predictions were not available. Hence, the total number of mutants studied was 27 (pathogenic) and 18 (non-pathogenic). The final contingency table for statistical testing is:

	Non-pathogenic variants	Pathogenic mutations
Protein destabilization	1	8
No protein destabilization	17	19

$$p = 0.048$$

Variant (cDNA)	Variant (Protein)	Experimental splicing alteration (myocardium)	Experimental splicing alteration (blood)	Experimental splicing alteration (mini-gene)	Reference
505+5G>C	-	-	Yes	Yes	5,7
772G>A	E258K	Yes	Yes	Yes	5,8-10
821+3G>T	-	Yes	Yes	-	8
821+5G>A	-	-	Yes	Yes	5,11
927-9 G>A	-	Yes	No	Yes	5,8,9,12
1090G>A	A364T	-	Yes	Yes	8,12
1227-13G>A	-	-	Yes	Yes	5,13
1624G>C	E542Q	Yes	Yes	Yes	5,8,11,14
1624+4A>T	-	Yes	Yes	Yes	5,8,9
1928-2 A>G	-	Yes	Yes	-	9,15
3330+5G>C	-	-	Yes	Yes	5,16

Supplementary Table S1. Analysis of RNA splicing of *MYBPC3* variants using different biological sources.

Variant (cDNA)	Variant (Protein)	Pathogenicity	Consequence of RNA splicing alteration	Reference
442G>A	G148R	Pathogenic	Exon 4 deletion 37bp, G136Efs*11	5
655G>T	V219F	Pathogenic	Exon 6 skipping, V219Rfs*42	5,12
772G>A	E258K	Pathogenic	Exon 6 skipping, V219Rfs*42	5,8-10
1213A>G	M405V	VUS	Exon 13 deletion 11bp, M405Qfs*5	5,12
1624G>C	E542Q	Pathogenic	Exon 17 skipping, W486*	This work and ^{5,9,11,12,14}
2308G>A	D770N	Pathogenic	Exon 23 skipping, L717Tfs*52 (predicted as in 2308G>C)	9
2308G>C	D770H	VUS	Exon 23 skipping, L717Tfs*52	This work
3330G>A	M1110I	Pathogenic	Exon 30 skipping, D1064Gfs*38	This work

Supplementary Table S2. Effects at the protein level of confirmed RNA splicing alterations.

Domain-Variant	Structure	Replica	WT			Mutant			$\Delta\Delta G_{WT-MUT}$ (kcal/mol)
			Unfolding time (ns)	Unfolded fraction (time, ns)	ΔG_{unf} (kcal/mol)	Unfolding time (ns)	Unfolded fraction (time)	ΔG_{unf} (kcal/mol)	
C1-P187R	PDB id: 3cx2	1	>1000	$\chi < 0.01$ (1000)	$> 3.92 \pm 0.33$	>1000	$\chi < 0.01$ (1000)	$> 3.92 \pm 0.33$	n.a.
		2	>1000			>1000			
		3	>1000			>1000			
C3-V471E	PDB id: 2mq0	1	>1000	$\chi < 0.01$ (1000)	$> 3.92 \pm 0.33$	>1000	$\chi = 0.33$ (1000)	2.74 ± 0.38	$> 1.18 \pm 0.71$
		2	>1000			830			
		3	>1000			>1000			
C4-D610N	Homology model	1	>1000	$\chi = 0.33$ (1000)	2.74 ± 0.38	520	$\chi > 0.99$ (520)	$< 1.74 \pm 0.47$	$> 1.00 \pm 0.85$
		2	>1000			430			
		3	750			180			
C5-P645L	PDB id: 1gxe	1	250	$\chi > 0.99$ (250)	$< 1.51 \pm 0.50$	0	$\chi > 0.99$ (10)	$< 0.47 \pm 0.60$	$\sim 1.04 \pm 1.1$
		2	50			10			
		3	50			0			
C9-R1138H (His ⁺)	Homology model	1	>1000	$\chi < 0.01$ (1000)	$> 3.92 \pm 0.33$	320	$\chi > 0.99$ (860)	$< 1.90 \pm 0.46$	$> 2.02 \pm 0.79$
		2	>1000			320			
		3	>1000			860			
C9-R1138H (His ⁰)	Homology model	1	>1000	$\chi < 0.01$ (1000)	$> 3.92 \pm 0.33$	>1000	$\chi = 0.66$ (1000)	2.42 ± 0.41	$> 1.5 \pm 0.74$
		2	>1000			630			
		3	>1000			860			
C10-G1206D	Homology model	1	>1000	$\chi < 0.01$ (1000)	$> 3.92 \pm 0.33$	400	$\chi > 0.99$ (400)	$< 1.66 \pm 0.48$	$> 2.26 \pm 0.81$
		2	>1000			10			
		3	>1000			250			
C10-T1237P	Homology model	1	>1000	$\chi < 0.01$ (1000)	$> 3.92 \pm 0.33$	>1000	$\chi = 0.33$ (1000)	2.74 ± 0.38	$> 1.18 \pm 0.71$
		2	>1000			>1000			
		3	>1000			620			
C10-Y1251H	Homology model	1	>1000	$\chi = 0.33$ (1000)	2.74 ± 0.38	100	$\chi = 0.66$ (1000)	2.42 ± 0.41	0.32 ± 0.81
		2	570			630			
		3	>1000			>1000			
C10-L1268P	Homology model	1	>1000	$\chi = 0.33$ (1000)	2.74 ± 0.38	190	$\chi > 0.99$ (200)	$< 1.44 \pm 0.50$	$> 1.30 \pm 0.88$
		2	540			200			
		3	>1000			30			

Supplementary Table S3. Molecular dynamics simulations. Three 1- μ s-long molecular dynamics (MD) simulations were run for each of the WT and mutant C1, C3, C4, C5, C9, and C10 domains indicated. The simulations were run at 410 K in protonation conditions corresponding to pH=7.0. For the C9-R1138H variant, the simulations were run considering protonated or neutral His1138 leading to similar results. To simulate the WT domains, we used high-resolution structures when available in the pdb (domains C1, C3, and C5), and resourced to homology models in the absence of high-resolution structural information. Mutations were introduced by replacing the WT residue side chain by that present in the variant, and selecting the conformer of lowest energy. Unfolding events were determined using clustering analyses (with a 0.3 nm RMSD cutoff) of two dimensional root-mean-square deviation matrices relating frames of a WT trajectory to frames of a mutant trajectory¹⁷. Predicted $\Delta\Delta G$ induced by the mutations were estimated from the number of trajectories in which unfolding events are detected and their unfolding times, according to published formalisms¹⁸. Positive $\Delta\Delta G$ values are indicative of mutant-induced domain destabilization at 298 K.

Supplementary References

- 1 Greenfield, N. J. Using circular dichroism collected as a function of temperature to determine the thermodynamics of protein unfolding and binding interactions. *Nat Protoc* **1**, 2527-2535 (2006). <https://www.ncbi.nlm.nih.gov/pubmed/17406506>.
- 2 Pricolo, M. R., Herrero-Galán, E., Mazzaccara, C., Losi, M. A., Alegre-Cebollada, J. & Frisso, G. Protein Thermodynamic Destabilization in the Assessment of Pathogenicity of a Variant of Uncertain Significance in Cardiac Myosin Binding Protein C. *Journal of Cardiovascular Translational Research* (2020). <https://doi.org/10.1007/s12265-020-09959-6>.
- 3 Yang, L., Falkesgaard, M., Thulstrup, P., Walmod, P., Lo Leggio, L. & Rasmussen, K. Expression, refolding and spectroscopic characterization of fibronectin type III (FnIII)-homology domains derived from human fibronectin leucine rich transmembrane protein (FLRT)-1, -2, and -3. *PeerJ* **5**, e3550 (2017).
- 4 Černý, J., Biedermannová, L., Mikulecký, P., Zahradník, J., Charnavets, T., Šebo, P. & Schneider, B. Redesigning protein cavities as a strategy for increasing affinity in protein-protein interaction: interferon- γ receptor 1 as a model. *Biomed Res Int* **2015**, 716945-716945 (2015). <https://pubmed.ncbi.nlm.nih.gov/26060819>.
- 5 Ito, K., Patel, P. N., Gorham, J. M., McDonough, B., DePalma, S. R., Adler, E. E., . . . Seidman, J. G. Identification of pathogenic gene mutations in LMNA and MYBPC3 that alter RNA splicing. *Proceedings of the National Academy of Sciences of the United States of America* **114**, 7689-7694 (2017). <http://www.ncbi.nlm.nih.gov/pubmed/28679633>.
- 6 Guerois, R., Nielsen, J. E. & Serrano, L. Predicting changes in the stability of proteins and protein complexes: a study of more than 1000 mutations. *Journal of molecular biology* **320**, 369-387 (2002). <http://www.ncbi.nlm.nih.gov/pubmed/12079393>.
- 7 Lin, J., Zheng, D.-D., Tao, Q., Yang, J.-H., Jiang, W.-P., Yang, X.-J., . . . Li, X. Two novel mutations of the MYBPC3 gene identified in Chinese families with hypertrophic cardiomyopathy. *Canadian Journal of Cardiology* **26**, 518-522 (2010). <http://www.sciencedirect.com/science/article/pii/S0828282X10704645>.
- 8 Singer, E. S., Ingles, J., Semsarian, C. & Bagnall, R. D. Key Value of RNA Analysis of MYBPC3 Splice-Site Variants in Hypertrophic Cardiomyopathy. *Circ Genom Precis Med* **12**, e002368 (2019). <https://www.ncbi.nlm.nih.gov/pubmed/30645170>.
- 9 Helms, A. S., Davis, F. M., Coleman, D., Bartolone, S. N., Glazier, A. A., Pagani, F., . . . Day, S. M. Sarcomere mutation-specific expression patterns in human hypertrophic cardiomyopathy. *Circulation. Cardiovascular genetics* **7**, 434-443 (2014). <http://www.ncbi.nlm.nih.gov/pubmed/25031304>.
- 10 Andersen, P. S., Havndrup, O., Bundgaard, H., Larsen, L. A., Vuust, J., Pedersen, A. K., . . . Christiansen, M. Genetic and phenotypic characterization of mutations in myosin-binding protein C (MYBPC3) in 81 families with familial hypertrophic cardiomyopathy: total or partial haploinsufficiency. *Eur J Hum Genet* **12**, 673-677 (2004). <https://www.ncbi.nlm.nih.gov/pubmed/15114369>.
- 11 Carrier, L., Bonne, G., Barend, E., Yu, B., Richard, P., Niel, F., . . . Schwartz, K. Organization and sequence of human cardiac myosin binding protein C gene (MYBPC3) and identification of mutations predicted to produce truncated proteins in familial hypertrophic cardiomyopathy. *Circ Res* **80**, 427-434 (1997). <http://www.ncbi.nlm.nih.gov/pubmed/9048664>.
- 12 Crehalet, H., Millat, G., Albuissou, J., Bonnet, V., Rouvet, I., Rousson, R. & Bozon, D. Combined use of in silico and in vitro splicing assays for interpretation of genomic variants of unknown significance in cardiomyopathies and channelopathies. *2012* **2** (2012). <https://www.pagepressjournals.org/index.php/cardiogen/article/view/423>.
- 13 Jääskeläinen, P., Kuusisto, J., Miettinen, R., Kärkkäinen, P., Kärkkäinen, S., Heikkinen, S., . . . Laakso, M. Mutations in the cardiac myosin-binding protein C gene are the predominant cause of familial hypertrophic cardiomyopathy in eastern Finland. *Journal of Molecular Medicine* **80**, 412-422 (2002). <https://doi.org/10.1007/s00109-002-0323-9>.
- 14 Marston, S., Copeland, O., Gehmlich, K., Schlossarek, S. & Carrier, L. How do MYBPC3 mutations cause hypertrophic cardiomyopathy? *Journal of muscle research and cell motility* **33**, 75-80 (2012). <http://www.ncbi.nlm.nih.gov/pubmed/22057632>.

- 15 Bonne, G., Carrier, L., Bercovici, J., Cruaud, C., Richard, P., Hainque, B., . . . Schwartz, K. Cardiac myosin binding protein-C gene splice acceptor site mutation is associated with familial hypertrophic cardiomyopathy. *Nature genetics* **11**, 438-440 (1995). <<http://www.ncbi.nlm.nih.gov/pubmed/7493026>>.
- 16 Watkins, H., Conner, D., Thierfelder, L., Jarcho, J. A., MacRae, C., McKenna, W. J., . . . Seidman, C. E. Mutations in the cardiac myosin binding protein-C gene on chromosome 11 cause familial hypertrophic cardiomyopathy. *Nature genetics* **11**, 434-437 (1995). <<https://doi.org/10.1038/ng1295-434>>.
- 17 Zhang, M., Zheng, J., Nussinov, R. & Ma, B. Oncogenic Mutations Differentially Affect Bax Monomer, Dimer, and Oligomeric Pore Formation in the Membrane. *Scientific Reports* **6**, 33340 (2016). <<https://doi.org/10.1038/srep33340>>.
- 18 Galano-Frutos, J. J., García-Cebollada, H. & Sancho, J. Molecular dynamics simulations for genetic interpretation in protein coding regions: where we are, where to go and when. *Briefings in Bioinformatics* (2019). <<https://doi.org/10.1093/bib/bbz146>>.