

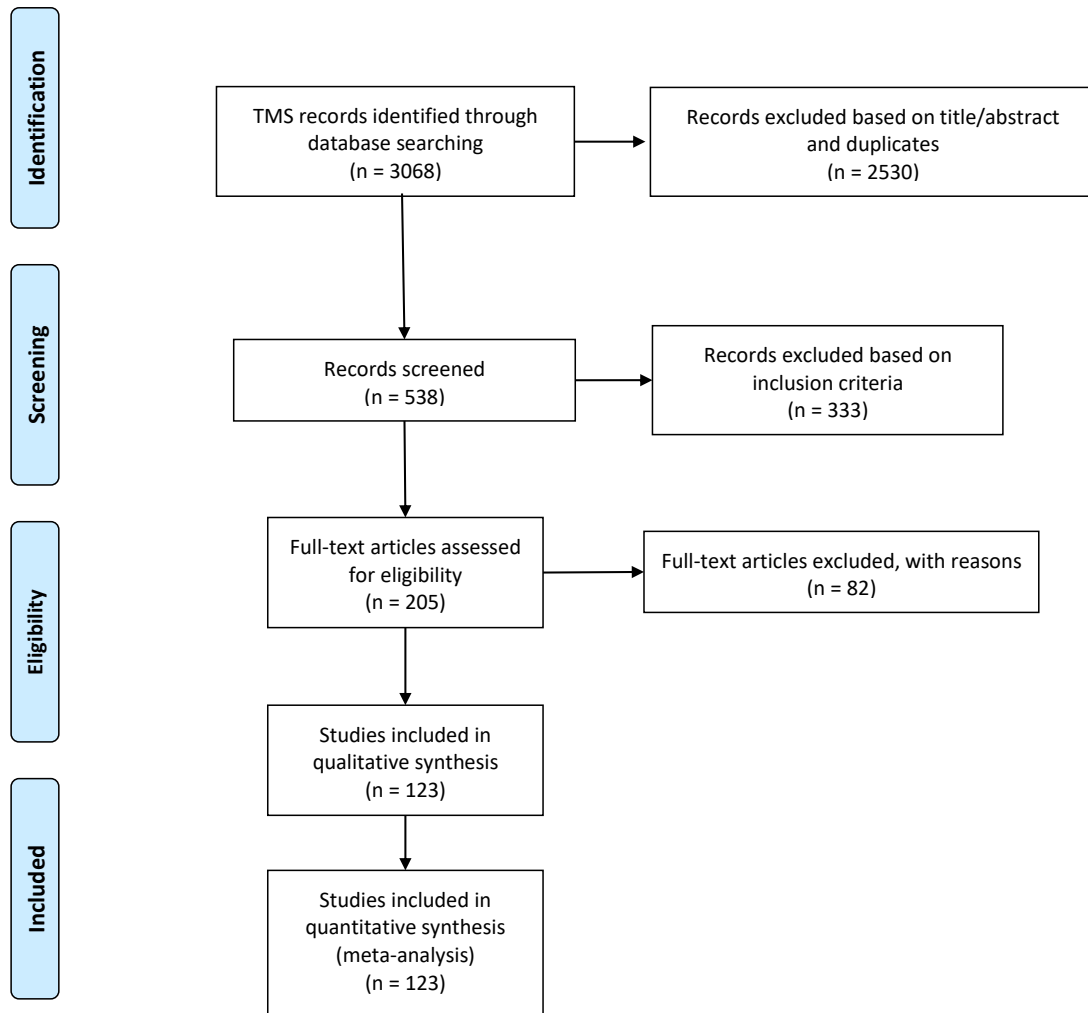
Supplementary material

This file contains

- Figures 1-11
- Tables 1-14



PRISMA 2009 Flow Diagram



From: Moher D, Liberati A, Tetzlaff J, Altman DG, The PRISMA Group (2009). Preferred Reporting Items for Systematic Reviews and Meta-Analyses: The PRISMA Statement. PLoS Med 6(7): e1000097. doi:10.1371/journal.pmed1000097

For more information, visit www.prisma-statement.org.

Figure 1. PRISMA flow chart. In adherence with the PRISMA guidelines,¹ two independent researchers (A.J. and W.M.) conducted the literature search and extracted the data. Their independent searches were compared by S.W.

Variability ratio including the second period of the crossover trials

The same meta-analysis with the second period of the crossover trial included shows that the same direction of the effect observed in the main analysis.

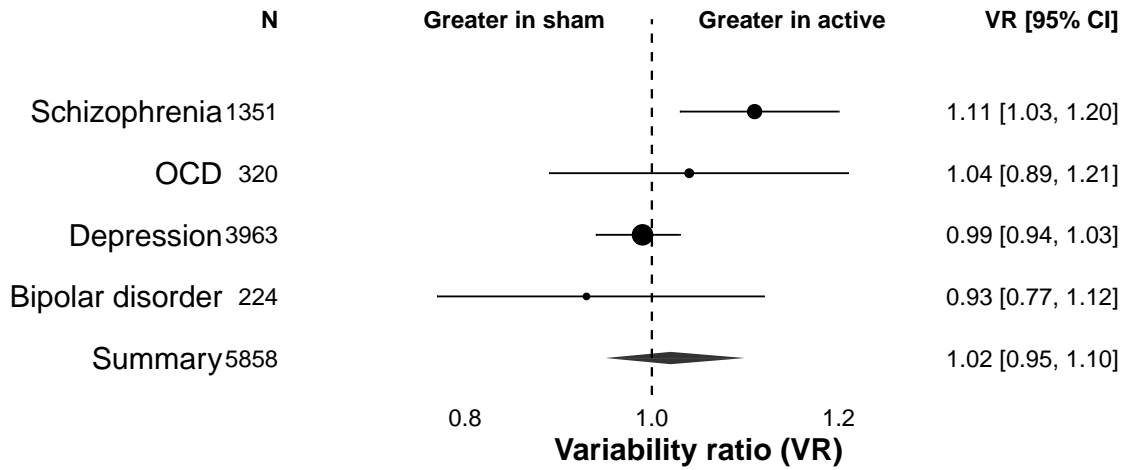


Figure 2. Variability ratio (VR) stratified by disorder. The forest plot shows the VR together with its 95% confidence interval (CI) for active vs sham by disorder. The direction of results did not change when including the second period of each crossover trial.

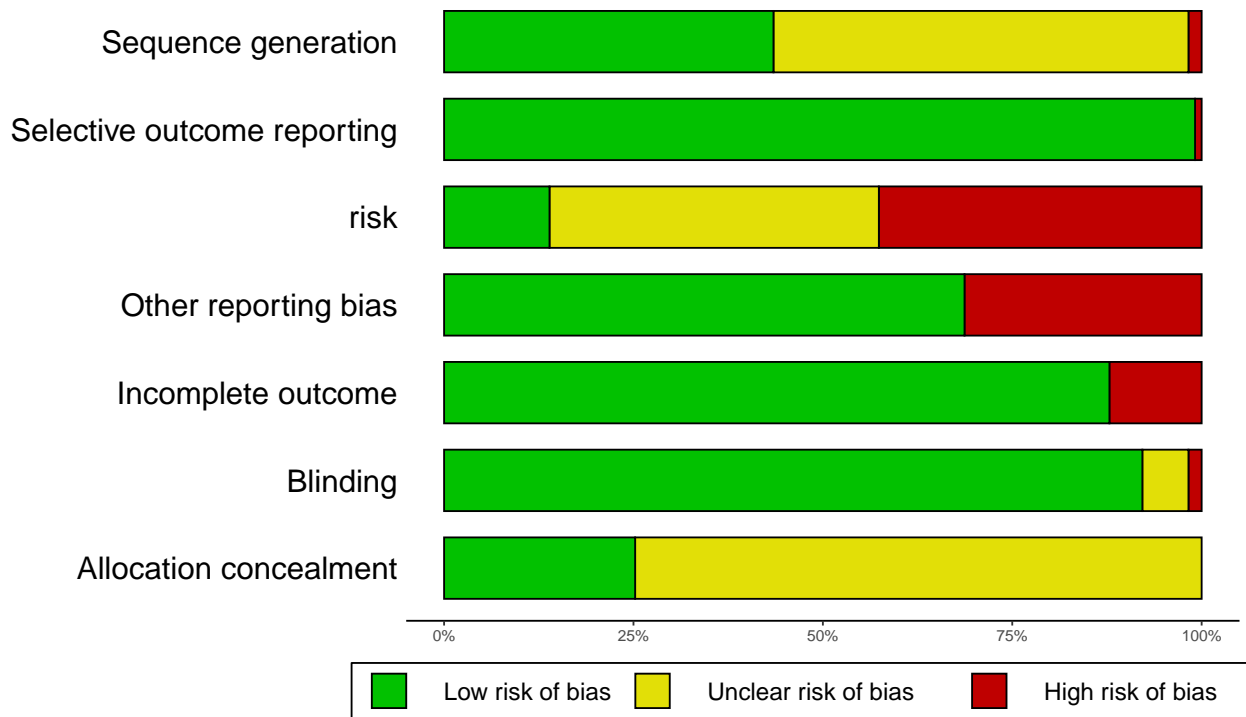


Figure 3. Risk of bias assessment. In adherence with the PRISMA guidelines,¹ two independent researchers (A.J. and W.M.) conducted the literature search and screened the articles, eliminated duplicates, decided whether the article met the inclusion criteria, and extracted all relevant data from the final articles. Their independent searches were compared by S.W., discrepancies investigated, and resolved by discussion. The risk of bias of the included studies was assessed independently by S.W. and N.M. according to the Cochrane Handbook for Systematic Reviews of Interventions.² The bar chart was produced with the *dmatar* package³ in R. See also the following table with the risk of bias assessment for each of the included studies.

Cochrane Risk of Bias Assessment for all studies

Studies	Random sequence generation	Allocation concealment	Selective reporting	Blinding (participants and personnel)	Blinding (outcome assessment)	Incomplete outcome data	Other sources of bias	Summary	Rating
Anderson et al., 2007	unclear	low	low	unclear	low	low	low	unclear	C
Avery et al., 2006	low	unclear	low	low	low	low	high	high	A
Baeken et al., 2013	low	unclear	low	low	low	low	high	high	A
Baeken et al., 2015	low	unclear	low	unclear	unclear	low	high	high	A
Bais et al., 2014	low	unclear	low	low	unclear	low	low	unclear	C
Barr et al., 2012	low	unclear	low	unclear	unclear	low	low	unclear	C
Benadhira et al., 2017	unclear	unclear	low	low	unclear	low	low	unclear	C
Berman et al., 2000	unclear	unclear	low	low	low	high	low	high	A
Blumberger et al., 2012	low	low	low	low	low	low	low	low	B
Blumberger et al., 2012a	unclear	unclear	low	low	low	low	low	unclear	C
Blumberger et al., 2016	low	unclear	low	low	low	low	low	unclear	C
Boggio et al., 2008	low	unclear	low	low	low	low	high	high	A
Bortolomasi et al., 2007	unclear	unclear	low	low	low	high	high	high	A
Boutros et al., 2002	low	unclear	low	low	low	low	high	high	A
Bretlau et al., 2008	unclear	unclear	low	unclear	low	low	low	unclear	C
Brunelin et al., 2012	unclear	unclear	low	low	low	low	low	unclear	C
Brunoni et al., 2013	low	low	low	low	low	low	low	low	B
Brunoni et al., 2013a	low	low	low	low	low	low	low	low	B
Brunoni et al., 2014	low	low	low	unclear	low	low	low	unclear	C
Brunoni et al., 2017	low	unclear	low	low	low	low	high	high	A
Carpenter et al., 2017	low	low	low	low	unclear	low	low	unclear	C
Carretero et al., 2009	unclear	unclear	low	low	unclear	low	low	unclear	C
Dlabac-de Lange et al., 2015	low	low	low	low	unclear	low	low	unclear	C
Dolberg et al., 2002	unclear	unclear	low	unclear	unclear	low	high	high	A
Elbeh et al., 2016	unclear	low	low	unclear	low	low	low	unclear	C

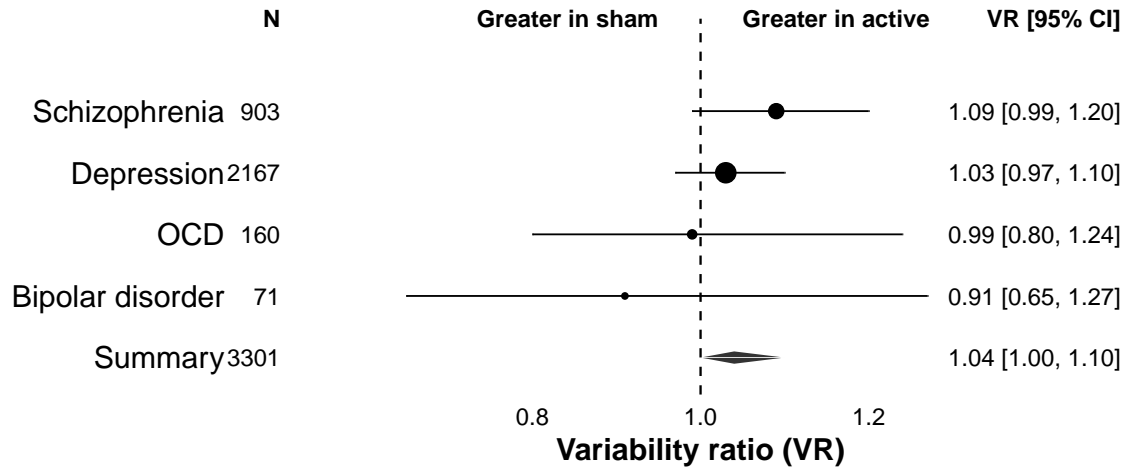


Figure 4. Sensitivity analysis. We excluded all studies for which risk of bias was high and re-analyzed the data. The forest plot shows the VR together with its 95% confidence interval (CI) for active vs sham by disorder. The VR was not increased after active stimulation compared with sham, for neither of the diagnostic groups.

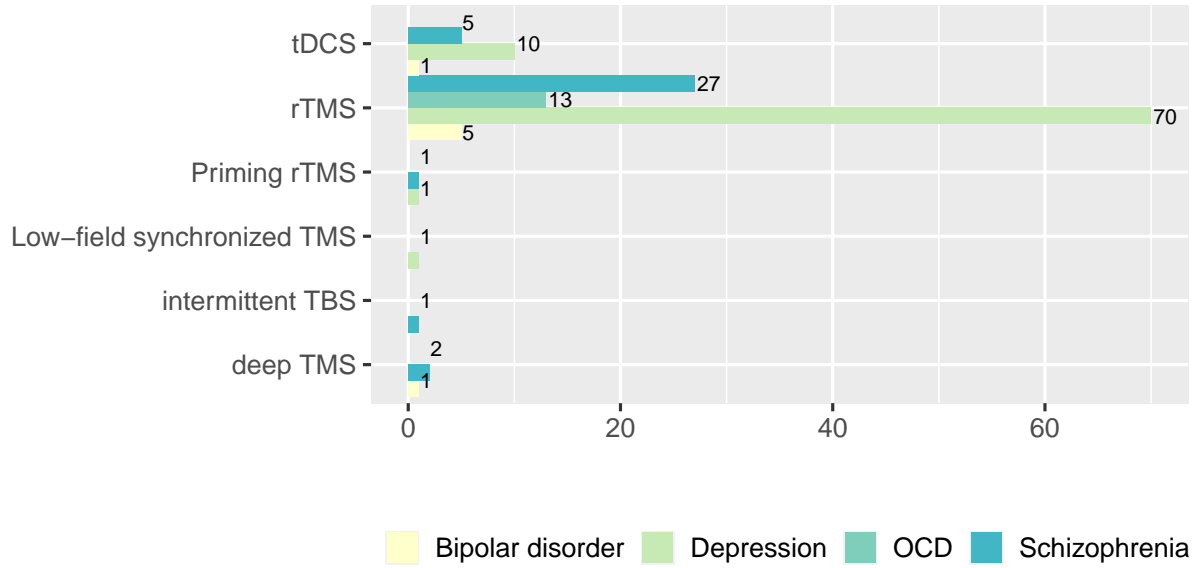


Figure 5. Brain stimulation methods and disorder. The frequency bar plot shows the number of studies that investigated which non-invasive brain stimulation method in which psychiatric population.

Additional plots for main analysis

VR by disorder by stimulation method

Major depressive disorder

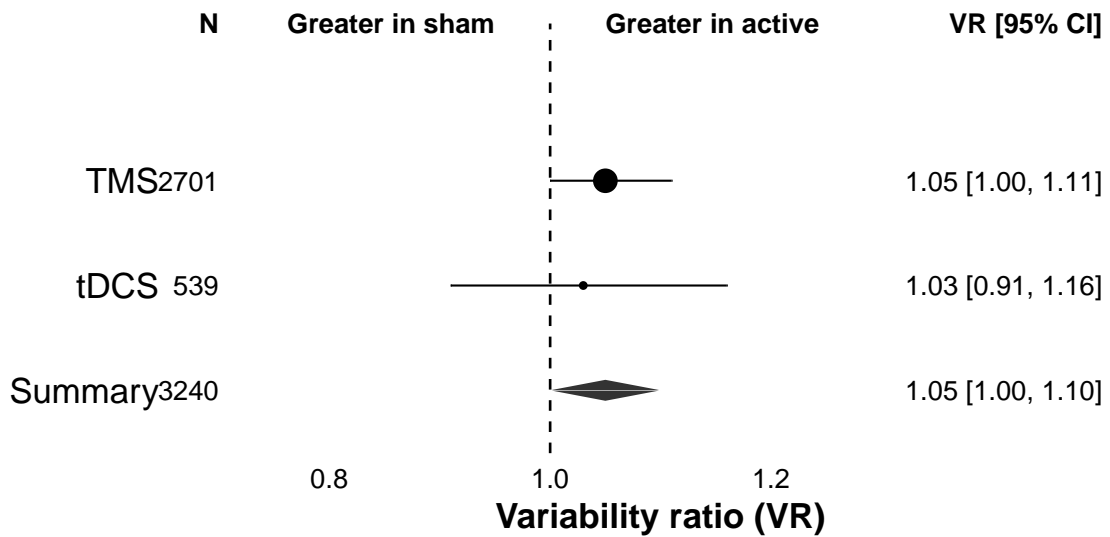


Figure 6. Variability ratio (VR) by stimulation method in the depression studies. The forest plot shows the VR together with its 95% confidence interval (CI) for active vs sham by stimulation method. The variability was not increased after active stimulation compared with sham, with the exception for rTMS.

Schizophrenia spectrum disorder

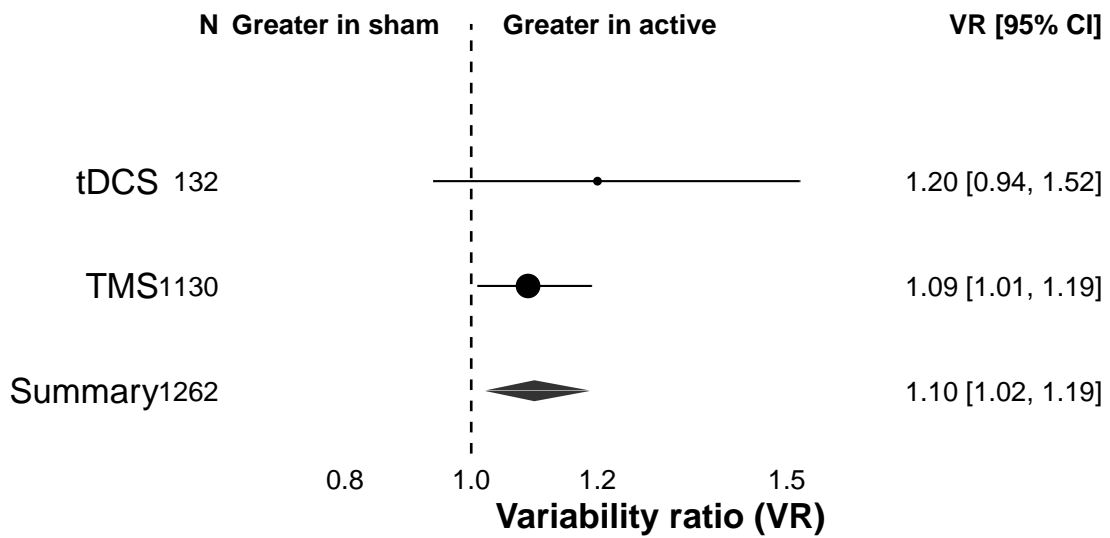


Figure 7. Variability ratio (VR) by stimulation method in the schizophrenia studies. The forest plot shows the VR together with its 95% confidence interval (CI) for active vs sham by stimulation method. The variability was not increased after active stimulation compared with sham.

Obsessive-compulsive disorder

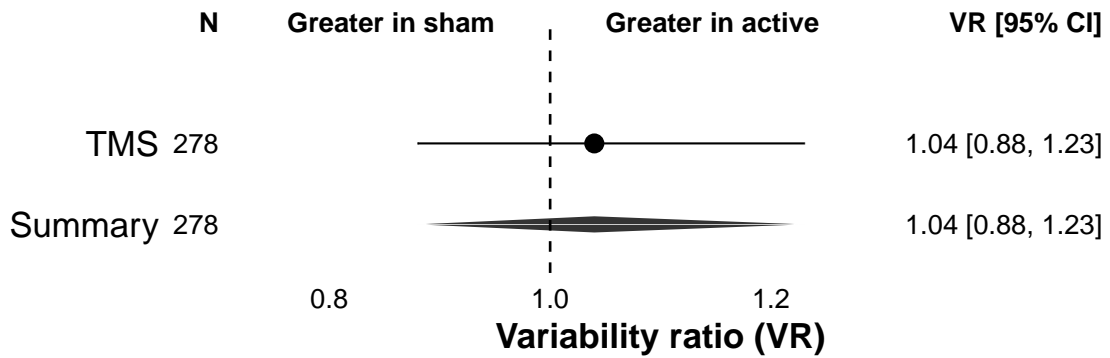


Figure 8. Variability ratio (VR) by stimulation method in the OCD studies. The forest plot shows the VR together with its 95% confidence interval (CI) for active vs sham by stimulation method. The variability was not increased after active stimulation compared with sham.

Bipolar disorder

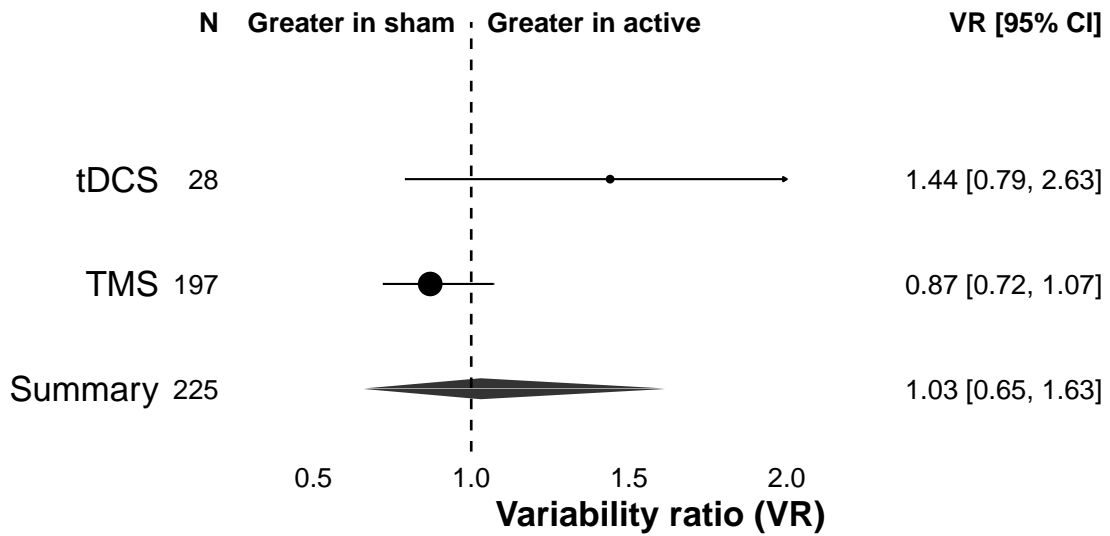


Figure 9. Variability ratio (VR) by stimulation method in the bipolar disorder studies. The forest plot shows the VR together with its 95% confidence interval (CI) for active vs sham by stimulation method. The variability was not increased after active stimulation compared with sham.

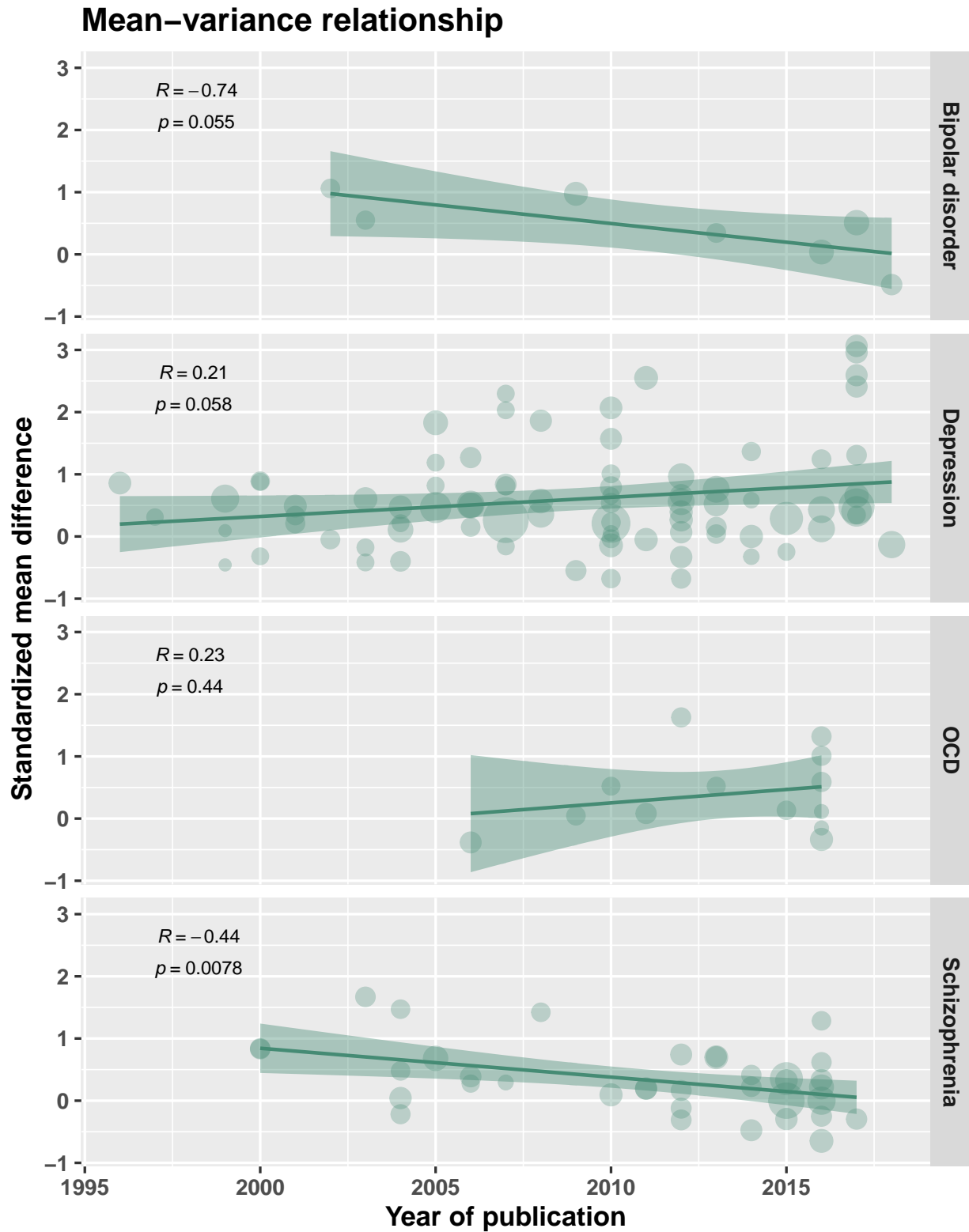


Figure 10. Relationship of effect size and year of publication. The bubble plot shows the relationship between the standardized mean differences (SMD) and year of publication. Only studies in patients with a schizophrenia spectrum diagnosis showed a significant relationship between decreasing effect sizes and time.

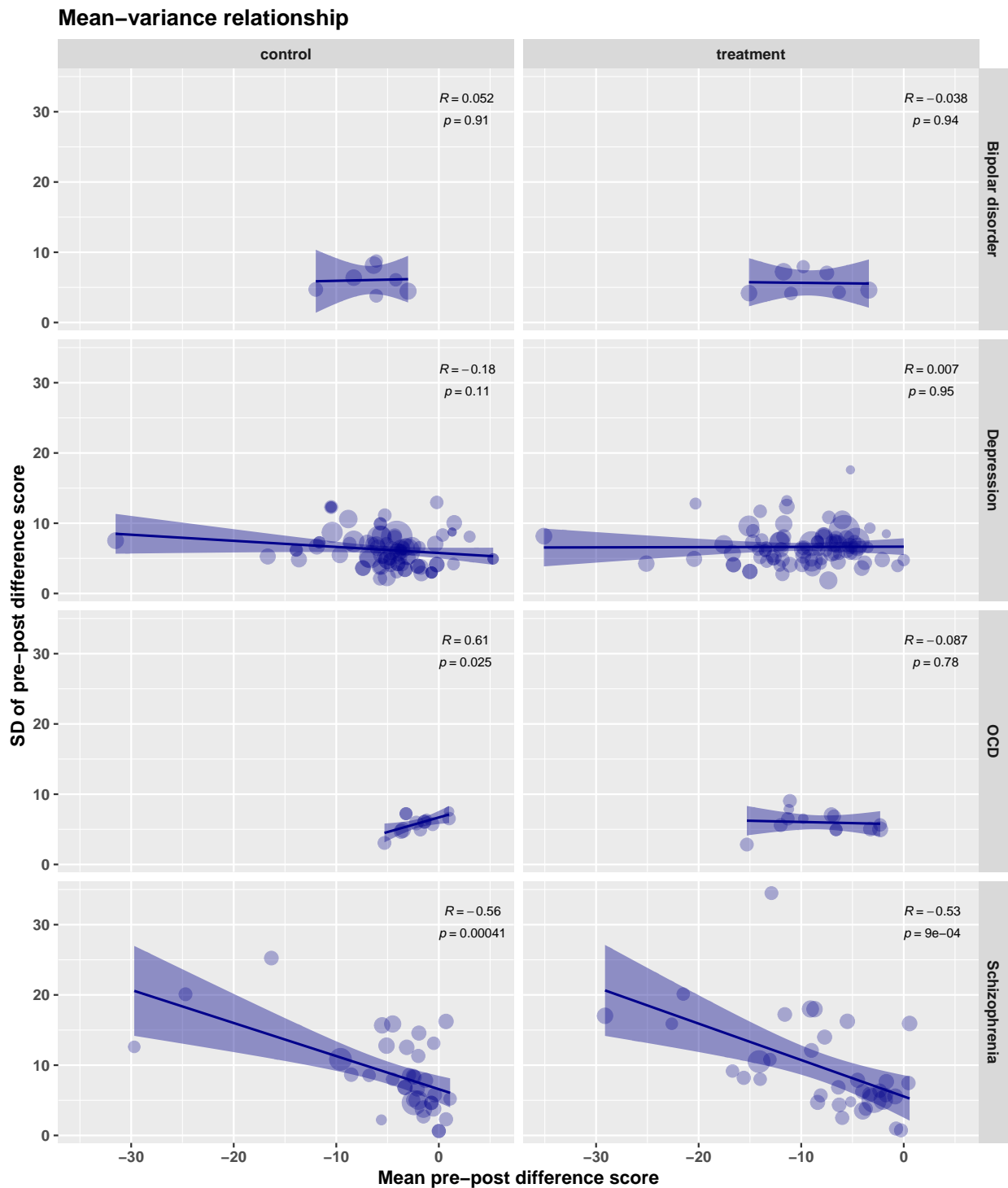


Figure 11. Mean-variance relationship. The bubble plot shows a significant mean-variance relationship for studies in patients with schizophrenia. It was suggested that this may limit the variability ratio in its applicability to identify shifts in variances and would call for the use of the coefficient of variation ratio (CVR) instead.⁴ Yet, the CVR is scale-dependent and should only be used for outcome data on the ratio scale with a true zero.⁵

Table 1
Descriptives for TMS in depression studies.

Study	Design	Scale	N	Age	t0(M)	t0(SD)	t1(M)	t1(SD)	t1-t0(M)	t1-t0(SD)
Anderson et al., 2007	RCT	MADRS	13.00	48.00	26.70	3.60	15.00	9.70	-11.70	8.08
Avery et al., 2006	RCT	HDRS 17	35.00	44.30	23.50	3.90	15.70	8.72	-7.80	7.80
Baeken et al., 2013 (1)	crossover	HDRS 17	9.00	51.78	26.33	8.15	19.63	8.35	-6.70	7.42
Baeken et al., 2015 (1)	crossover	HDRS	9.00	50.78	25.44	6.79	17.89	6.79	-7.55	6.10
Benadhira et al., 2017	RCT	HDRS 17	10.00	51.80	9.10	4.65	8.50	4.01	-0.60	3.93
Berman et al., 2000	RCT	HDRS 25	10.00	45.20	37.10	9.20	23.10	14.89	-14.00	11.70
Blumberger et al., 2012 (1)	RCT	HDRS 17	22.00	48.90	26.00	3.30	19.60	5.60	-6.40	4.50
Blumberger et al., 2012 (2)	RCT	HDRS 17	26.00	58.00	25.10	3.80	15.30	6.70	-9.80	5.38
Blumberger et al., 2016 (2)	RCT	HDRS 17	40.00	46.50	26.00	3.40	19.60	7.78	-6.40	7.00
Blumberger et al., 2016 (1)	RCT	HDRS 17	40.00	46.40	24.10	3.20	17.30	7.88	-6.80	7.20
Bortolomasi et al., 2007	RCT	HAMD 24	12.00	NA	25.17	7.80	11.33	9.00	-13.84	7.63
Boutros et al., 2002	RCT	HDRS	12.00	49.50	34.40	10.10	27.10	13.20	-7.30	10.83
Bretlau et al., 2008	RCT	HDRS	22.00	53.10	25.30	3.00	16.40	4.50	-8.90	3.63
Carpenter et al., 2017	RCT	HDRS 24	47.00	45.60	31.30	5.50	16.20	11.06	-15.10	9.60
Carretero et al., 2009	RCT	HDRS 17	14.00	47.50	19.40	5.40	15.60	3.80	-3.80	4.38
Fitzgerald et al., 2003 (1)	crossover	MADRS	20.00	42.20	36.05	7.55	30.80	7.50	-5.25	6.76

Table 14 continued

Study	Design	Scale	N	Age	t0(M)	t0(SD)	t1(M)	t1(SD)	t1-t0(M)	t1-t0(SD)
Fitzgerald et al., 2006	RCT	MADRS	25.00	46.80	34.00	5.90	26.20	10.20	-7.80	8.19
Fitzgerald et al., 2012 (2)	RCT	HDRS 17	22.00	40.45	24.30	3.60	22.20	6.00	-2.10	4.82
Fitzgerald et al., 2012 (1)	RCT	HDRS 17	24.00	43.40	23.70	3.80	19.60	4.20	-4.10	3.61
Garcia-Toro et al., 2001	RCT	HDRS 21	17.00	51.50	27.11	6.65	20.06	8.73	-7.05	5.66
Garcia-Toro et al., 2001a	RCT	HDRS 21	11.00	43.20	25.90	6.40	16.10	7.70	-9.80	6.44
George et al., 1997 (1)	crossover	HDRS 21	7.00	42.43	30.00	4.00	23.00	9.00	-7.00	7.35
George et al., 2000 (1)	RCT	HDRS 21	10.00	42.60	30.00	5.80	22.20	10.60	-7.80	8.53
George et al., 2000 (2)	RCT	HDRS 21	10.00	42.20	26.30	5.90	13.50	5.80	-12.80	5.26
George et al., 2010	RCT	HDRS	92.00	47.70	26.26	4.95	21.61	9.26	-4.65	7.46
Hausmann et al., 2004	RCT	HDRS 21	25.00	46.28	32.30	5.90	17.60	9.00	-14.70	7.25
Holtzheimer et al., 2004	RCT	HDRS 17	7.00	40.40	22.70	5.30	14.60	3.20	-8.10	4.26
Hoppner et al., 2003 (2)	RCT	HDRS 21	10.00	52.00	22.80	4.70	16.50	7.00	-6.30	5.65
Hoppner et al., 2003 (1)	RCT	HDRS 21	10.00	60.36	22.50	4.50	14.50	6.00	-8.00	4.91
Huang et al., 2012	RCT	HDRS 17	28.00	32.77	22.71	2.27	15.36	1.73	-7.35	1.86
Januel et al., 2006	RCT	HDRS 17	11.00	38.64	21.73	3.52	9.90	5.95	-11.83	4.78
Kang et al., 2016	RCT	HDRS 17	12.00	42.80	24.10	6.40	10.10	3.80	-14.00	5.14
Klein et al., 1999	RCT	HDRS 17	36.00	60.50	25.80	5.60	13.70	9.20	-12.10	7.39

Table 14 continued

Study	Design	Scale	N	Age	t0(M)	t0(SD)	t1(M)	t1(SD)	t1-t0(M)	t1-t0(SD)
Koerselman et al., 2004	RCT	HDRS 17	26.00	51.00	25.90	4.33	21.10	7.47	-4.80	6.00
Kreuzer et al., 2012	RCT	HDRS modified	21.00	45.30	21.43	5.30	8.74	6.10	-12.69	5.17
Krstic et al., 2014	RCT	HDRS 24	11.00	50.70	30.09	3.53	16.73	5.71	-13.36	4.59
Leuchter et al., 2015	RCT	HDRS 17	59.00	46.70	21.78	3.79	12.78	5.90	-9.00	4.75
Manes et al., 2001	RCT	HDRS	10.00	60.50	22.70	5.20	13.70	5.40	-9.00	4.77
Mantovani et al., 2013	RCT	HDRS 24	12.00	40.20	31.90	6.50	25.30	9.80	-6.60	7.90
Mogg et al., 2008	RCT	HDRS 17	29.00	55.00	20.50	4.40	16.00	8.24	-4.50	6.64
Moller et al., 2006	RCT	HDRS 17	10.00	54.00	22.10	7.00	13.80	7.00	-8.30	6.29
Mosimann et al., 2004	RCT	HDRS 21	15.00	60.00	28.50	4.60	23.30	7.20	-5.20	5.79
Nongpiur et al., 2011	RCT	HDRS 21	18.00	33.28	29.00	5.97	8.56	4.68	-20.44	4.92
O'Reardon et al., 2007	RCT	MADRS	155.00	47.90	32.80	6.00	27.00	11.10	-5.80	8.93
Padberg et al., 1999 (1)	RCT	HDRS	6.00	63.50	30.20	9.50	28.50	9.40	-1.70	8.50
Padberg et al., 1999 (2)	RCT	HDRS	6.00	46.70	26.70	9.40	21.50	21.50	-5.20	17.60
Paillere-Martinot et al., 2010 (3)	RCT	MADRS	7.00	NA	34.70	6.00	23.30	14.50	-11.40	13.20
Paillere-Martinot et al., 2010 (1)	RCT	MADRS	18.00	48.19	32.00	7.78	17.30	11.82	-14.70	8.90
Paillere-Martinot et al., 2010 (2)	RCT	MADRS	9.00	NA	34.00	8.50	13.70	15.37	-20.30	12.80
Pallanti et al., 2010 (1)	RCT	HDRS	20.00	47.60	28.75	6.01	22.00	6.71	-6.75	5.75

Table 14 continued

Study	Design	Scale	N	Age	t0(M)	t0(SD)	t1(M)	t1(SD)	t1-t0(M)	t1-t0(SD)
Pallanti et al., 2010 (2)	RCT	HDRS	20.00	51.20	27.95	5.89	16.00	7.60	-11.95	6.25
Pascual-Leone et al., 1996	crossover	HDRS 21	17.00	48.60	25.20	13.50	13.80	14.00	-11.40	12.37
Ray et al., 2011	RCT	HDRS	20.00	36.75	29.60	3.79	4.50	5.23	-25.10	4.25
Rossini et al., 2005	RCT	HDRS 24	50.00	48.40	25.10	3.50	13.01	8.08	-12.09	7.28
Rumi et al., 2005	RCT	HDRS 17	22.00	39.30	29.71	6.38	13.00	6.38	-16.71	5.74
Speer et al., 2014 (1)	RCT	HDRS 28	8.00	41.30	35.80	10.60	32.50	10.10	-3.30	9.31
Speer et al., 2014 (2)	RCT	HDRS 28	8.00	39.60	28.60	7.60	25.10	6.90	-3.50	6.55
Stern et al., 2007 (2)	RCT	HDRS 21	10.00	52.30	27.60	3.90	27.60	5.90	0.00	4.75
Stern et al., 2007 (3)	RCT	HDRS 21	10.00	52.80	27.90	3.80	15.80	4.80	-12.10	3.97
Stern et al., 2007 (1)	RCT	HDRS 21	10.00	53.20	27.80	3.20	15.10	6.00	-12.70	4.83
Su et al., 2005 (1)	RCT	HDRS 21	10.00	43.60	23.20	7.50	9.80	7.10	-13.40	6.57
Su et al., 2005 (2)	RCT	HDRS 21	10.00	43.20	26.50	5.20	12.30	7.70	-14.20	6.21
Theleiteris et al., 2017 (1)	RCT	HDRS 17	26.00	39.10	30.60	3.20	15.60	3.70	-15.00	3.13
Theleiteris et al., 2017 (3)	RCT	HDRS 17	26.00	39.10	30.60	3.20	15.60	3.70	-15.00	3.13
Theleiteris et al., 2017 (2)	RCT	HDRS 17	26.00	38.90	29.70	4.60	13.10	4.50	-16.60	4.09
Theleiteris et al., 2017 (4)	RCT	HDRS 17	26.00	38.90	29.70	4.60	13.10	4.50	-16.60	4.09
Triggs et al., 2010 (2)	RCT	HDRS 24	18.00	46.70	28.20	6.00	19.80	9.10	-8.40	7.33

Table 14 continued

Study	Design	Scale	N	Age	t0(M)	t0(SD)	t1(M)	t1(SD)	t1-t0(M)	t1-t0(SD)
Triggs et al., 2010 (4)	RCT	HDRS 24	18.00	46.70	28.20	6.00	19.80	9.10	-8.40	7.33
Triggs et al., 2010 (1)	RCT	HDRS 24	16.00	48.50	27.20	4.80	13.70	7.60	-13.50	6.11
Triggs et al., 2010 (3)	RCT	HDRS 24	16.00	48.50	27.20	4.80	13.70	7.60	-13.50	6.11
Wang et al., 2017	RCT	HDRS 24	22.00	28.82	43.50	9.89	8.41	4.02	-35.09	8.16
Zheng et al., 2010	RCT	HDRS 17	19.00	26.90	24.60	3.00	13.50	5.10	-11.10	4.10

Note. HDRS, Hamilton Depression Rating Scale; MADRS, Montgomery-Asberg Depression Rating Scale; NA, not available; RCT, randomized controlled trial; t0, baseline; t1, outcome; t1-t0, pre-post difference score.

Table 2
Descriptives for tDCS in depression studies.

Study	Design	Scale	N	Age	t0(M)	t0(SD)	t1(M)	t1(SD)	t1-t0(M)	t1-t0(SD)
Brunoni et al., 2013 (2)	RCT	MADRS	23.00	41.20	30.80	5.80	19.10	12.20	-11.70	9.91
Brunoni et al., 2013a (1)	crossover	MADRS	30.00	41.00	30.73	6.72	13.17	8.46	-17.56	7.00
Brunoni et al., 2014	RCT	HDRS 21	20.00	46.10	25.60	5.80	20.00	9.80	-5.60	7.87
Brunoni et al., 2017	RCT	HDRS 17	94.00	44.60	21.80	3.90	12.80	8.10	-9.00	7.10
Loo et al., 2010a	RCT	MADRS	20.00	48.95	29.20	4.87	23.60	7.72	-5.60	6.21
Loo et al., 2012	RCT	MADRS	31.00	47.80	30.40	6.02	20.60	7.57	-9.80	6.26
Loo et al., 2018 (1)	RCT	MADRS	42.00	48.93	29.00	6.48	23.00	12.96	-6.00	10.48
Palm et al., 2012 (1)	crossover	HDRS 24	11.00	56.00	33.00	7.30	28.20	8.80	-4.80	7.36
Rigonatti et al., 2008	RCT	BDI	21.00	51.60	23.00	4.58	13.09	4.58	-9.91	4.12
Salehinejad et al., 2017	RCT	HDRS	12.00	26.80	24.58	2.57	12.75	3.36	-11.83	2.76

Note. HDRS, Hamilton Depression Rating Scale; Hemi, hemisphere; MADRS, Montgomery-Asberg Depression Rating Scale; NA, not available; RCT, randomized controlled trial; t0, baseline; t1, outcome; t1-t0, pre-post difference score

Table 3
Descriptives for TMS in schizophrenia studies.

Study	Design	Scale	N	Age	t0(M)	t0(SD)	t1(M)	t1(SD)	t1-t0(M)	t1-t0(SD)
Bais et al., 2014 (2)	RCT	PANSS P3	15.00	33.90	4.60	0.63	4.33	0.90	-0.27	0.73
Bais et al., 2014 (1)	RCT	PANSS P3	16.00	37.20	5.19	0.66	4.44	1.21	-0.75	0.97
Barr et al., 2012	RCT	PANSS Negative	13.00	40.46	14.85	6.43	15.31	9.22	0.46	7.46
Blumberger et al., 2012a (2)	RCT	PSYRATS	17.00	43.80	32.12	6.17	30.38	6.59	-1.74	5.75
Blumberger et al., 2012a (1)	RCT	PSYRATS	17.00	36.60	30.82	6.56	28.47	7.48	-2.35	6.36
Dlabac-de Lange et al., 2015	RCT	SANS	16.00	41.80	56.60	15.70	51.10	19.60	-5.50	16.24
Fitzgerald et al., 2008	RCT	SANS	12.00	37.20	55.50	4.10	38.80	11.00	-16.70	9.17
Garg et al., 2016	RCT	PANSS	20.00	32.40	96.30	20.36	87.60	19.60	-8.70	17.97
Hajak et al., 2004	RCT	PANSS	10.00	37.90	82.20	15.60	68.20	17.53	-14.00	8.00
Hoffman et al., 2005	RCT	HCS	27.00	35.10	10.00	0.00	6.00	3.50	-4.00	3.50
Hoffman et al., 2000	RCT	HCS	12.00	41.80	8.50	2.20	4.80	4.39	-3.70	3.80
Hoffman et al., 2003	RCT	HCS	12.00	35.80	10.00	0.00	4.00	2.50	-6.00	2.50
Holi et al., 2004	RCT	PANSS	11.00	38.50	105.20	41.20	92.30	34.30	-12.90	34.49
Jandl et al., 2006 (1)	crossover	PSYRATS	14.00	36.30	29.07	3.89	20.07	14.01	-9.00	12.10
Kimura et al., 2016	RCT	AHRS	16.00	44.60	22.90	6.80	18.40	9.70	-4.50	7.86
Klirova et al., 2013 (1)	crossover	AHRS	14.00	NA	24.90	5.10	18.60	4.50	-6.30	4.35

Table 14 continued

Study	Design	Scale	N	Age	t0(M)	t0(SD)	t1(M)	t1(SD)	t1-t0(M)	t1-t0(SD)
Koops et al., 2016	RCT	AHRS	37.00	38.00	24.00	5.00	22.00	6.00	-2.00	5.02
Li et al., 2016	RCT	SANS	25.00	45.20	88.10	17.90	79.00	21.50	-9.10	18.00
Loo et al., 2010 (1)	crossover	AHRS	18.00	33.80	22.69	6.85	21.86	4.82	-0.83	5.55
Mcintosh et al., 2004	crossover	PANSS P3	16.00	35.90	34.30	7.70	32.60	9.10	-1.70	7.65
Paillore-Martinot et al., 2017	RCT	SAPS	15.00	32.07	42.13	17.52	30.53	20.37	-11.60	17.22
Poulet et al., 2004	crossover	AHRS	10.00	34.90	25.90	3.60	12.85	11.38	-13.05	10.80
Prikryl et al., 2013	RCT	SANS	23.00	31.60	68.35	14.18	39.22	21.11	-29.13	17.03
Quan et al., 2015	RCT	PANSS	78.00	46.87	69.38	11.64	55.27	11.74	-14.11	10.51
Rabany et al., 2014	RCT	SANS	20.00	33.10	55.00	20.12	47.28	24.51	-7.72	14.00
Rollnik et al., 2000	RCT	BPRS	12.00	40.40	48.90	10.20	33.30	6.40	-15.60	8.20
Rosa et al., 2007	RCT	PANSS Positive	6.00	29.83	23.67	2.42	18.50	5.82	-5.17	4.79
Saba et al., 2006	RCT	PANSS	8.00	30.70	88.00	10.49	65.38	19.73	-22.62	15.89
Slotema et al., 2011 (2)	RCT	AHRS	22.00	38.00	26.00	6.60	22.70	6.40	-3.30	5.85
Slotema et al., 2011 (1)	RCT	AHRS	20.00	36.00	26.60	6.30	22.60	7.40	-4.00	6.24
Wobrock et al., 2015	RCT	PANSS Negative	76.00	36.20	25.60	4.60	22.70	6.10	-2.90	4.99

Table 14 continued

Study	Design	Scale	N	Age	t0(M)	t0(SD)	t1(M)	t1(SD)	t1-t0(M)	t1-t0(SD)
-------	--------	-------	---	-----	-------	--------	-------	--------	----------	-----------

Note. AHRS, auditory hallucinations rating scale; BPRS, brief psychiatric rating scale; HCS, hallucination change scale; NA, not available; SANS, scale for the assessment of negative symptoms; SAPS, scale for the assessment of positive symptoms; PSYRATS, psychotic symptom rating scale; RCT, randomized controlled trial; t0, baseline; t1, outcome; t1-t0, pre-post difference score.

Table 4
Descriptives for tDCS in schizophrenia studies.

Study	Design	Scale	N	Age	t0(M)	t0(SD)	t1(M)	t1(SD)	t1-t0(M)	t1-t0(SD)
Brunelin et al., 2012	RCT	AHRS	15.00	40.40	28.30	4.10	19.90	5.80	-8.40	4.70
Frohlich et al., 2016	RCT	AHRS	13.00	43.38	27.00	6.90	20.62	8.13	-6.38	6.84
Mondino et al., 2016	RCT	AHRS	11.00	36.70	27.20	4.10	19.10	7.10	-8.10	5.70
Palm et al., 2016	RCT	SANS	10.00	38.40	59.60	23.00	38.10	21.70	-21.50	20.12
Smith et al., 2015	RCT	PANSS	17.00	46.76	65.14	18.38	65.71	16.96	0.57	15.93

Note. AHRS, auditory hallucinations rating scale; BPRS, brief psychiatric rating scale; HCS, hallucination change scale; Hemi, hemisphere; NA, not available; SANS, scale for the assessment of negative symptoms; SAPS, scale for the assessment of positive symptoms; PSYRATS, psychotic symptom rating scale; RCT, randomized controlled trial; t0, baseline; t1, outcome; t1-t0, pre-post difference score.

Table 5
Descriptives for TMS in OCD studies.

Study	Design	Scale	N	Age	t0(M)	t0(SD)	t1(M)	t1(SD)	t1-t0(M)	t1-t0(SD)
Elbeh et al., 2016 (2)	RCT	YBOCS	15.00	28.90	25.30	4.70	18.50	8.50	-6.80	6.84
Elbeh et al., 2016 (1)	RCT	YBOCS	15.00	26.80	26.70	6.50	14.70	5.90	-12.00	5.60
Gomes et al., 2012	RCT	YBOCS	12.00	35.50	36.40	3.20	21.10	3.10	-15.30	2.83
Haghighi et al., 2015 (1)	crossover	YBOCS	10.00	34.90	30.40	6.54	19.10	7.74	-11.30	6.51
Hawken et al., 2016	RCT	YBOCS	10.00	33.00	28.00	4.74	16.90	11.04	-11.10	9.05
Jahangard et al., 2016 (1)	crossover	YBOCS	5.00	32.40	31.00	6.52	21.20	7.76	-9.80	6.51
Kang et al., 2009	RCT	YBOCS	10.00	28.60	26.50	5.64	24.20	6.71	-2.30	5.63
Mansur et al., 2011	RCT	YBOCS	13.00	42.10	30.00	3.84	26.75	6.28	-3.25	5.04
Mantovani et al., 2010	RCT	YBOCS	9.00	39.70	26.00	5.40	19.40	5.60	-6.60	4.95
Mantovani et al., 2013a	RCT	YBOCS	9.00	39.70	26.00	5.40	19.40	5.60	-6.60	4.95
Pelissolo et al., 2016	RCT	YBOCS	20.00	39.10	30.20	4.20	27.80	5.90	-2.30	5.00
Prasko et al., 2006	RCT	YBOCS	18.00	28.90	29.82	5.88	22.76	8.76	-7.06	7.06
Shayganfard et al., 2016 (1)	crossover	YBOCS	5.00	33.80	33.00	3.08	21.80	9.31	-11.20	7.87

Note. NA, not available; OCD, obsessive-compulsive disorder; RCT, randomized controlled trial; t0, baseline; t1, outcome; t1-t0, pre-post difference score; YBOCS, Yale-Brown obsessive compulsive scale.

Table 6
Descriptives for TMS in bipolar disorder studies.

Study	Design	Scale	N	Age	t0(M)	t0(SD)	t1(M)	t1(SD)	t1-t0(M)	t1-t0(SD)
Dolberg et al., 2002	RCT	HDRS	10.00	51.80	22.00	4.80	15.70	4.80	-6.30	4.31
Fitzgerald et al., 2016	RCT	HDRS 17	23.00	46.30	23.20	4.00	19.80	5.70	-3.40	4.62
Hernandez-Ribas et al., 2013	RCT	HDRS	10.00	42.60	19.70	3.80	8.70	5.06	-11.00	4.14
Kaptsan et al., 2003	RCT	BPRS	11.00	43.80	35.40	9.90	25.60	5.90	-9.80	7.95
Praharaj et al., 2009	RCT	YMRS	21.00	29.76	20.85	5.21	5.76	3.26	-15.09	4.19
Tavares et al., 2017	RCT	HDRS 17	25.00	43.50	25.80	5.25	14.08	8.99	-11.72	7.22

Note. BPRS, Brief psychiatric rating scale; HDRS, Hamilton Depression Rating Scale; NA, not available; RCT, randomized controlled trial; t0, baseline; t1, outcome; t1-t0, pre-post difference score; YMRS, Young Mania Rating Scale.

Table 7
Descriptives for tDCS in bipolar disorder studies.

Study	Design	Scale	N	Age	t0(M)	t0(SD)	t1(M)	t1(SD)	t1-t0(M)	t1-t0(SD)
Loo et al., 2018 (2)	RCT	MADRS	19.00	49.11	31.50	4.36	24.00	8.72	-7.50	7.05

Note. BPRS, Brief psychiatric rating scale; HDRS, Hamilton Depression Rating Scale; Hemi, hemisphere; NA, not available; RCT, randomized controlled trial; t0, baseline; t1, outcome; t1-t0, pre-post difference score; YMRS, Young Mania Rating Scale.

Table 8
Descriptives for TMS in depression studies.

Study	Design	Scale	N	Age	t0(M)	t0(SD)	t1(M)	t1(SD)	t1-t0(M)	t1-t0(SD)
Anderson et al., 2007	RCT	MADRS	13.00	48.00	26.70	3.60	15.00	9.70	-11.70	8.08
Avery et al., 2006	RCT	HDRS 17	35.00	44.30	23.50	3.90	15.70	8.72	-7.80	7.80
Baeken et al., 2013 (1)	crossover	HDRS 17	9.00	51.78	26.33	8.15	19.63	8.35	-6.70	7.42
Baeken et al., 2015 (1)	crossover	HDRS	9.00	50.78	25.44	6.79	17.89	6.79	-7.55	6.10
Benadhira et al., 2017	RCT	HDRS 17	10.00	51.80	9.10	4.65	8.50	4.01	-0.60	3.93
Berman et al., 2000	RCT	HDRS 25	10.00	45.20	37.10	9.20	23.10	14.89	-14.00	11.70
Blumberger et al., 2012 (1)	RCT	HDRS 17	22.00	48.90	26.00	3.30	19.60	5.60	-6.40	4.50
Blumberger et al., 2012 (2)	RCT	HDRS 17	26.00	58.00	25.10	3.80	15.30	6.70	-9.80	5.38
Blumberger et al., 2016 (2)	RCT	HDRS 17	40.00	46.50	26.00	3.40	19.60	7.78	-6.40	7.00
Blumberger et al., 2016 (1)	RCT	HDRS 17	40.00	46.40	24.10	3.20	17.30	7.88	-6.80	7.20
Bortolomasi et al., 2007	RCT	HAMD 24	12.00	NA	25.17	7.80	11.33	9.00	-13.84	7.63
Boutros et al., 2002	RCT	HDRS	12.00	49.50	34.40	10.10	27.10	13.20	-7.30	10.83
Bretlau et al., 2008	RCT	HDRS	22.00	53.10	25.30	3.00	16.40	4.50	-8.90	3.63
Carpenter et al., 2017	RCT	HDRS 24	47.00	45.60	31.30	5.50	16.20	11.06	-15.10	9.60
Carretero et al., 2009	RCT	HDRS 17	14.00	47.50	19.40	5.40	15.60	3.80	-3.80	4.38
Fitzgerald et al., 2003 (1)	crossover	MADRS	20.00	42.20	36.05	7.55	30.80	7.50	-5.25	6.76

Table 14 continued

Study	Design	Scale	N	Age	t0(M)	t0(SD)	t1(M)	t1(SD)	t1-t0(M)	t1-t0(SD)
Fitzgerald et al., 2006	RCT	MADRS	25.00	46.80	34.00	5.90	26.20	10.20	-7.80	8.19
Fitzgerald et al., 2012 (2)	RCT	HDRS 17	22.00	40.45	24.30	3.60	22.20	6.00	-2.10	4.82
Fitzgerald et al., 2012 (1)	RCT	HDRS 17	24.00	43.40	23.70	3.80	19.60	4.20	-4.10	3.61
Garcia-Toro et al., 2001	RCT	HDRS 21	17.00	51.50	27.11	6.65	20.06	8.73	-7.05	5.66
Garcia-Toro et al., 2001a	RCT	HDRS 21	11.00	43.20	25.90	6.40	16.10	7.70	-9.80	6.44
George et al., 1997 (1)	crossover	HDRS 21	7.00	42.43	30.00	4.00	23.00	9.00	-7.00	7.35
George et al., 2000 (1)	RCT	HDRS 21	10.00	42.60	30.00	5.80	22.20	10.60	-7.80	8.53
George et al., 2000 (2)	RCT	HDRS 21	10.00	42.20	26.30	5.90	13.50	5.80	-12.80	5.26
George et al., 2010	RCT	HDRS	92.00	47.70	26.26	4.95	21.61	9.26	-4.65	7.46
Hausmann et al., 2004	RCT	HDRS 21	25.00	46.28	32.30	5.90	17.60	9.00	-14.70	7.25
Holtzheimer et al., 2004	RCT	HDRS 17	7.00	40.40	22.70	5.30	14.60	3.20	-8.10	4.26
Hoppner et al., 2003 (2)	RCT	HDRS 21	10.00	52.00	22.80	4.70	16.50	7.00	-6.30	5.65
Hoppner et al., 2003 (1)	RCT	HDRS 21	10.00	60.36	22.50	4.50	14.50	6.00	-8.00	4.91
Huang et al., 2012	RCT	HDRS 17	28.00	32.77	22.71	2.27	15.36	1.73	-7.35	1.86
Januel et al., 2006	RCT	HDRS 17	11.00	38.64	21.73	3.52	9.90	5.95	-11.83	4.78
Kang et al., 2016	RCT	HDRS 17	12.00	42.80	24.10	6.40	10.10	3.80	-14.00	5.14
Klein et al., 1999	RCT	HDRS 17	36.00	60.50	25.80	5.60	13.70	9.20	-12.10	7.39

Table 14 continued

Study	Design	Scale	N	Age	t0(M)	t0(SD)	t1(M)	t1(SD)	t1-t0(M)	t1-t0(SD)
Koerselman et al., 2004	RCT	HDRS 17	26.00	51.00	25.90	4.33	21.10	7.47	-4.80	6.00
Kreuzer et al., 2012	RCT	HDRS modified	21.00	45.30	21.43	5.30	8.74	6.10	-12.69	5.17
Krstic et al., 2014	RCT	HDRS 24	11.00	50.70	30.09	3.53	16.73	5.71	-13.36	4.59
Leuchter et al., 2015	RCT	HDRS 17	59.00	46.70	21.78	3.79	12.78	5.90	-9.00	4.75
Manes et al., 2001	RCT	HDRS	10.00	60.50	22.70	5.20	13.70	5.40	-9.00	4.77
Mantovani et al., 2013	RCT	HDRS 24	12.00	40.20	31.90	6.50	25.30	9.80	-6.60	7.90
Mogg et al., 2008	RCT	HDRS 17	29.00	55.00	20.50	4.40	16.00	8.24	-4.50	6.64
Moller et al., 2006	RCT	HDRS 17	10.00	54.00	22.10	7.00	13.80	7.00	-8.30	6.29
Mosimann et al., 2004	RCT	HDRS 21	15.00	60.00	28.50	4.60	23.30	7.20	-5.20	5.79
Nongpiur et al., 2011	RCT	HDRS 21	18.00	33.28	29.00	5.97	8.56	4.68	-20.44	4.92
O'Reardon et al., 2007	RCT	MADRS	155.00	47.90	32.80	6.00	27.00	11.10	-5.80	8.93
Padberg et al., 1999 (1)	RCT	HDRS	6.00	63.50	30.20	9.50	28.50	9.40	-1.70	8.50
Padberg et al., 1999 (2)	RCT	HDRS	6.00	46.70	26.70	9.40	21.50	21.50	-5.20	17.60
Paillere-Martinot et al., 2010 (3)	RCT	MADRS	7.00	NA	34.70	6.00	23.30	14.50	-11.40	13.20
Paillere-Martinot et al., 2010 (1)	RCT	MADRS	18.00	48.19	32.00	7.78	17.30	11.82	-14.70	8.90
Paillere-Martinot et al., 2010 (2)	RCT	MADRS	9.00	NA	34.00	8.50	13.70	15.37	-20.30	12.80
Pallanti et al., 2010 (1)	RCT	HDRS	20.00	47.60	28.75	6.01	22.00	6.71	-6.75	5.75

Table 14 continued

Study	Design	Scale	N	Age	t0(M)	t0(SD)	t1(M)	t1(SD)	t1-t0(M)	t1-t0(SD)
Pallanti et al., 2010 (2)	RCT	HDRS	20.00	51.20	27.95	5.89	16.00	7.60	-11.95	6.25
Pascual-Leone et al., 1996	crossover	HDRS 21	17.00	48.60	25.20	13.50	13.80	14.00	-11.40	12.37
Ray et al., 2011	RCT	HDRS	20.00	36.75	29.60	3.79	4.50	5.23	-25.10	4.25
Rossini et al., 2005	RCT	HDRS 24	50.00	48.40	25.10	3.50	13.01	8.08	-12.09	7.28
Rumi et al., 2005	RCT	HDRS 17	22.00	39.30	29.71	6.38	13.00	6.38	-16.71	5.74
Speer et al., 2014 (1)	RCT	HDRS 28	8.00	41.30	35.80	10.60	32.50	10.10	-3.30	9.31
Speer et al., 2014 (2)	RCT	HDRS 28	8.00	39.60	28.60	7.60	25.10	6.90	-3.50	6.55
Stern et al., 2007 (2)	RCT	HDRS 21	10.00	52.30	27.60	3.90	27.60	5.90	0.00	4.75
Stern et al., 2007 (3)	RCT	HDRS 21	10.00	52.80	27.90	3.80	15.80	4.80	-12.10	3.97
Stern et al., 2007 (1)	RCT	HDRS 21	10.00	53.20	27.80	3.20	15.10	6.00	-12.70	4.83
Su et al., 2005 (1)	RCT	HDRS 21	10.00	43.60	23.20	7.50	9.80	7.10	-13.40	6.57
Su et al., 2005 (2)	RCT	HDRS 21	10.00	43.20	26.50	5.20	12.30	7.70	-14.20	6.21
Theleiteris et al., 2017 (1)	RCT	HDRS 17	26.00	39.10	30.60	3.20	15.60	3.70	-15.00	3.13
Theleiteris et al., 2017 (3)	RCT	HDRS 17	26.00	39.10	30.60	3.20	15.60	3.70	-15.00	3.13
Theleiteris et al., 2017 (2)	RCT	HDRS 17	26.00	38.90	29.70	4.60	13.10	4.50	-16.60	4.09
Theleiteris et al., 2017 (4)	RCT	HDRS 17	26.00	38.90	29.70	4.60	13.10	4.50	-16.60	4.09
Triggs et al., 2010 (2)	RCT	HDRS 24	18.00	46.70	28.20	6.00	19.80	9.10	-8.40	7.33

Table 14 continued

Study	Design	Scale	N	Age	t0(M)	t0(SD)	t1(M)	t1(SD)	t1-t0(M)	t1-t0(SD)
Triggs et al., 2010 (4)	RCT	HDRS 24	18.00	46.70	28.20	6.00	19.80	9.10	-8.40	7.33
Triggs et al., 2010 (1)	RCT	HDRS 24	16.00	48.50	27.20	4.80	13.70	7.60	-13.50	6.11
Triggs et al., 2010 (3)	RCT	HDRS 24	16.00	48.50	27.20	4.80	13.70	7.60	-13.50	6.11
Wang et al., 2017	RCT	HDRS 24	22.00	28.82	43.50	9.89	8.41	4.02	-35.09	8.16
Zheng et al., 2010	RCT	HDRS 17	19.00	26.90	24.60	3.00	13.50	5.10	-11.10	4.10

Note. HDRS, Hamilton Depression Rating Scale; MADRS, Montgomery-Asberg Depression Rating Scale; NA, not available; RCT, randomized controlled trial; t0, baseline; t1, outcome; t1-t0, pre-post difference score.

Table 9
Descriptives for tDCS in depression studies.

Study	Design	Scale	N	Age	t0(M)	t0(SD)	t1(M)	t1(SD)	t1-t0(M)	t1-t0(SD)
Brunoni et al., 2013 (2)	RCT	MADRS	23.00	41.20	30.80	5.80	19.10	12.20	-11.70	9.91
Brunoni et al., 2013a (1)	crossover	MADRS	30.00	41.00	30.73	6.72	13.17	8.46	-17.56	7.00
Brunoni et al., 2014	RCT	HDRS 21	20.00	46.10	25.60	5.80	20.00	9.80	-5.60	7.87
Brunoni et al., 2017	RCT	HDRS 17	94.00	44.60	21.80	3.90	12.80	8.10	-9.00	7.10
Loo et al., 2010a	RCT	MADRS	20.00	48.95	29.20	4.87	23.60	7.72	-5.60	6.21
Loo et al., 2012	RCT	MADRS	31.00	47.80	30.40	6.02	20.60	7.57	-9.80	6.26
Loo et al., 2018 (1)	RCT	MADRS	42.00	48.93	29.00	6.48	23.00	12.96	-6.00	10.48
Palm et al., 2012 (1)	crossover	HDRS 24	11.00	56.00	33.00	7.30	28.20	8.80	-4.80	7.36
Rigonatti et al., 2008	RCT	BDI	21.00	51.60	23.00	4.58	13.09	4.58	-9.91	4.12
Salehinejad et al., 2017	RCT	HDRS	12.00	26.80	24.58	2.57	12.75	3.36	-11.83	2.76

Note. HDRS, Hamilton Depression Rating Scale; Hemi, hemisphere; MADRS, Montgomery-Asberg Depression Rating Scale; NA, not available; RCT, randomized controlled trial; t0, baseline; t1, outcome; t1-t0, pre-post difference score

Table 10
Descriptives for TMS in schizophrenia studies.

Study	Design	Scale	N	Age	t0(M)	t0(SD)	t1(M)	t1(SD)	t1-t0(M)	t1-t0(SD)
Bais et al., 2014 (2)	RCT	PANSS P3	15.00	33.90	4.60	0.63	4.33	0.90	-0.27	0.73
Bais et al., 2014 (1)	RCT	PANSS P3	16.00	37.20	5.19	0.66	4.44	1.21	-0.75	0.97
Barr et al., 2012	RCT	PANSS Negative	13.00	40.46	14.85	6.43	15.31	9.22	0.46	7.46
Blumberger et al., 2012a (2)	RCT	PSYRATS	17.00	43.80	32.12	6.17	30.38	6.59	-1.74	5.75
Blumberger et al., 2012a (1)	RCT	PSYRATS	17.00	36.60	30.82	6.56	28.47	7.48	-2.35	6.36
Dlabac-de Lange et al., 2015	RCT	SANS	16.00	41.80	56.60	15.70	51.10	19.60	-5.50	16.24
Fitzgerald et al., 2008	RCT	SANS	12.00	37.20	55.50	4.10	38.80	11.00	-16.70	9.17
Garg et al., 2016	RCT	PANSS	20.00	32.40	96.30	20.36	87.60	19.60	-8.70	17.97
Hajak et al., 2004	RCT	PANSS	10.00	37.90	82.20	15.60	68.20	17.53	-14.00	8.00
Hoffman et al., 2005	RCT	HCS	27.00	35.10	10.00	0.00	6.00	3.50	-4.00	3.50
Hoffman et al., 2000	RCT	HCS	12.00	41.80	8.50	2.20	4.80	4.39	-3.70	3.80
Hoffman et al., 2003	RCT	HCS	12.00	35.80	10.00	0.00	4.00	2.50	-6.00	2.50
Holi et al., 2004	RCT	PANSS	11.00	38.50	105.20	41.20	92.30	34.30	-12.90	34.49
Jandl et al., 2006 (1)	crossover	PSYRATS	14.00	36.30	29.07	3.89	20.07	14.01	-9.00	12.10
Kimura et al., 2016	RCT	AHRS	16.00	44.60	22.90	6.80	18.40	9.70	-4.50	7.86
Klirova et al., 2013 (1)	crossover	AHRS	14.00	NA	24.90	5.10	18.60	4.50	-6.30	4.35

Table 14 continued

Study	Design	Scale	N	Age	t0(M)	t0(SD)	t1(M)	t1(SD)	t1-t0(M)	t1-t0(SD)
Koops et al., 2016	RCT	AHRS	37.00	38.00	24.00	5.00	22.00	6.00	-2.00	5.02
Li et al., 2016	RCT	SANS	25.00	45.20	88.10	17.90	79.00	21.50	-9.10	18.00
Loo et al., 2010 (1)	crossover	AHRS	18.00	33.80	22.69	6.85	21.86	4.82	-0.83	5.55
Mcintosh et al., 2004	crossover	PANSS P3	16.00	35.90	34.30	7.70	32.60	9.10	-1.70	7.65
Paillore-Martinot et al., 2017	RCT	SAPS	15.00	32.07	42.13	17.52	30.53	20.37	-11.60	17.22
Poulet et al., 2004	crossover	AHRS	10.00	34.90	25.90	3.60	12.85	11.38	-13.05	10.80
Prikryl et al., 2013	RCT	SANS	23.00	31.60	68.35	14.18	39.22	21.11	-29.13	17.03
Quan et al., 2015	RCT	PANSS	78.00	46.87	69.38	11.64	55.27	11.74	-14.11	10.51
Rabany et al., 2014	RCT	SANS	20.00	33.10	55.00	20.12	47.28	24.51	-7.72	14.00
Rollnik et al., 2000	RCT	BPRS	12.00	40.40	48.90	10.20	33.30	6.40	-15.60	8.20
Rosa et al., 2007	RCT	PANSS Positive	6.00	29.83	23.67	2.42	18.50	5.82	-5.17	4.79
Saba et al., 2006	RCT	PANSS	8.00	30.70	88.00	10.49	65.38	19.73	-22.62	15.89
Slotema et al., 2011 (2)	RCT	AHRS	22.00	38.00	26.00	6.60	22.70	6.40	-3.30	5.85
Slotema et al., 2011 (1)	RCT	AHRS	20.00	36.00	26.60	6.30	22.60	7.40	-4.00	6.24
Wobrock et al., 2015	RCT	PANSS Negative	76.00	36.20	25.60	4.60	22.70	6.10	-2.90	4.99

Table 14 continued

Study	Design	Scale	N	Age	t0(M)	t0(SD)	t1(M)	t1(SD)	t1-t0(M)	t1-t0(SD)
-------	--------	-------	---	-----	-------	--------	-------	--------	----------	-----------

Note. AHRS, auditory hallucinations rating scale; BPRS, brief psychiatric rating scale; HCS, hallucination change scale; NA, not available; SANS, scale for the assessment of negative symptoms; SAPS, scale for the assessment of positive symptoms; PSYRATS, psychotic symptom rating scale; RCT, randomized controlled trial; t0, baseline; t1, outcome; t1-t0, pre-post difference score.

Table 11
Descriptives for tDCS in schizophrenia studies.

Study	Design	Scale	N	Age	t0(M)	t0(SD)	t1(M)	t1(SD)	t1-t0(M)	t1-t0(SD)
Brunelin et al., 2012	RCT	AHRS	15.00	40.40	28.30	4.10	19.90	5.80	-8.40	4.70
Frohlich et al., 2016	RCT	AHRS	13.00	43.38	27.00	6.90	20.62	8.13	-6.38	6.84
Mondino et al., 2016	RCT	AHRS	11.00	36.70	27.20	4.10	19.10	7.10	-8.10	5.70
Palm et al., 2016	RCT	SANS	10.00	38.40	59.60	23.00	38.10	21.70	-21.50	20.12
Smith et al., 2015	RCT	PANSS	17.00	46.76	65.14	18.38	65.71	16.96	0.57	15.93

Note. AHRS, auditory hallucinations rating scale; BPRS, brief psychiatric rating scale; HCS, hallucination change scale; Hemi, hemisphere; NA, not available; SANS, scale for the assessment of negative symptoms; SAPS, scale for the assessment of positive symptoms; PSYRATS, psychotic symptom rating scale; RCT, randomized controlled trial; t0, baseline; t1, outcome; t1-t0, pre-post difference score.

Table 12
Descriptives for TMS in OCD studies.

Study	Design	Scale	N	Age	t0(M)	t0(SD)	t1(M)	t1(SD)	t1-t0(M)	t1-t0(SD)
Elbeh et al., 2016 (2)	RCT	YBOCS	15.00	28.90	25.30	4.70	18.50	8.50	-6.80	6.84
Elbeh et al., 2016 (1)	RCT	YBOCS	15.00	26.80	26.70	6.50	14.70	5.90	-12.00	5.60
Gomes et al., 2012	RCT	YBOCS	12.00	35.50	36.40	3.20	21.10	3.10	-15.30	2.83
Haghighi et al., 2015 (1)	crossover	YBOCS	10.00	34.90	30.40	6.54	19.10	7.74	-11.30	6.51
Hawken et al., 2016	RCT	YBOCS	10.00	33.00	28.00	4.74	16.90	11.04	-11.10	9.05
Jahangard et al., 2016 (1)	crossover	YBOCS	5.00	32.40	31.00	6.52	21.20	7.76	-9.80	6.51
Kang et al., 2009	RCT	YBOCS	10.00	28.60	26.50	5.64	24.20	6.71	-2.30	5.63
Mansur et al., 2011	RCT	YBOCS	13.00	42.10	30.00	3.84	26.75	6.28	-3.25	5.04
Mantovani et al., 2010	RCT	YBOCS	9.00	39.70	26.00	5.40	19.40	5.60	-6.60	4.95
Mantovani et al., 2013a	RCT	YBOCS	9.00	39.70	26.00	5.40	19.40	5.60	-6.60	4.95
Pelissolo et al., 2016	RCT	YBOCS	20.00	39.10	30.20	4.20	27.80	5.90	-2.30	5.00
Prasko et al., 2006	RCT	YBOCS	18.00	28.90	29.82	5.88	22.76	8.76	-7.06	7.06
Shayganfard et al., 2016 (1)	crossover	YBOCS	5.00	33.80	33.00	3.08	21.80	9.31	-11.20	7.87

Note. NA, not available; OCD, obsessive-compulsive disorder; RCT, randomized controlled trial; t0, baseline; t1, outcome; t1-t0, pre-post difference score; YBOCS, Yale-Brown obsessive compulsive scale.

Table 13
Descriptives for TMS in bipolar disorder studies.

Study	Design	Scale	N	Age	t0(M)	t0(SD)	t1(M)	t1(SD)	t1-t0(M)	t1-t0(SD)
Dolberg et al., 2002	RCT	HDRS	10.00	51.80	22.00	4.80	15.70	4.80	-6.30	4.31
Fitzgerald et al., 2016	RCT	HDRS 17	23.00	46.30	23.20	4.00	19.80	5.70	-3.40	4.62
Hernandez-Ribas et al., 2013	RCT	HDRS	10.00	42.60	19.70	3.80	8.70	5.06	-11.00	4.14
Kaptsan et al., 2003	RCT	BPRS	11.00	43.80	35.40	9.90	25.60	5.90	-9.80	7.95
Praharaj et al., 2009	RCT	YMRS	21.00	29.76	20.85	5.21	5.76	3.26	-15.09	4.19
Tavares et al., 2017	RCT	HDRS 17	25.00	43.50	25.80	5.25	14.08	8.99	-11.72	7.22

Note. BPRS, Brief psychiatric rating scale; HDRS, Hamilton Depression Rating Scale; NA, not available; RCT, randomized controlled trial; t0, baseline; t1, outcome; t1-t0, pre-post difference score; YMRS, Young Mania Rating Scale.

Table 14
Descriptives for tDCS in bipolar disorder studies.

Study	Design	Scale	N	Age	t0(M)	t0(SD)	t1(M)	t1(SD)	t1-t0(M)	t1-t0(SD)
Loo et al., 2018 (2)	RCT	MADRS	19.00	49.11	31.50	4.36	24.00	8.72	-7.50	7.05

Note. BPRS, Brief psychiatric rating scale; HDRS, Hamilton Depression Rating Scale; Hemi, hemisphere; NA, not available; RCT, randomized controlled trial; t0, baseline; t1, outcome; t1-t0, pre-post difference score; YMRS, Young Mania Rating Scale.

Conflict of interest

SW, PH, WM, NM, and AJ report no conflicts of interest.

Funding/Support

The study had no funder or financial supporter.

References

1. Moher, D. *et al.* Preferred reporting items for systematic review and meta-analysis protocols (prisma-p) 2015 statement. *Systematic reviews* **4**, 1 (2015).
2. Higgins, J. P. & Green, S. *Cochrane handbook for systematic reviews of interventions*. vol. 4 (John Wiley & Sons, 2011).
3. Harrer, M., Cuijpers, P., Furukawa, T. & Ebert, D. D. *Dmetar: Companion r package for the guide 'doing meta-analysis in r*. (R package version 0.0.9000, 2019).
4. Nakagawa, S. *et al.* Meta-analysis of variation: Ecological and evolutionary applications and beyond. *Methods Ecol Evol* **6**, 143–152 (2015).
5. Mills, H. L. *et al.* Detecting heterogeneity of intervention effects using analysis and meta-analysis of differences in variance between arms of a trial. *medRxiv* (2020) doi:10.1101/2020.03.07.20032516.