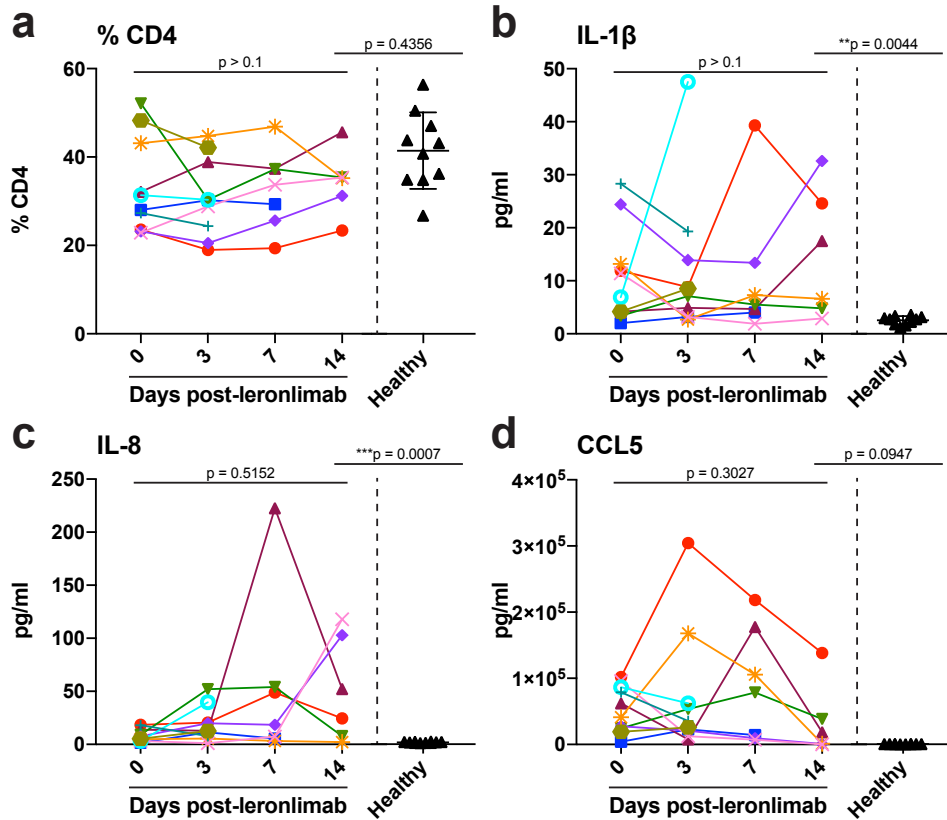
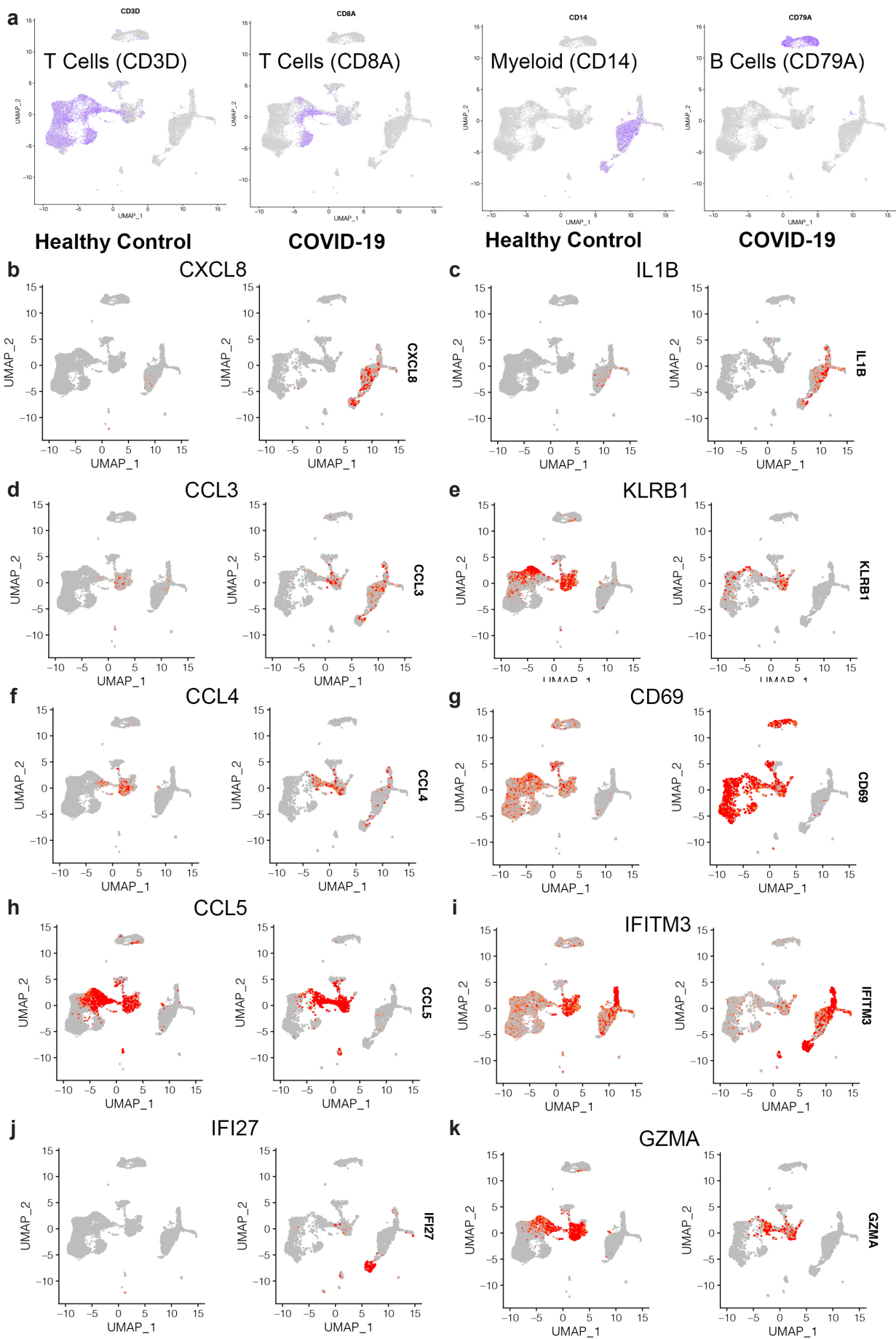


Supplementary Figure 1. Complete blood count and serum chemistry values in critically ill COVID-19 patients after leronlimab administration. a-d, Peripheral blood levels of platelets (a), hemoglobin (b), white blood cells (c), and lymphocytes (d). Serum levels of ferritin (e), C-reactive protein (f), Procalcitonin (g), D-dimer, values >20 graphed as 20 (h), aspartate aminotransferases (AST), values <20 graphed as 0 (i), alanine aminotransferase (ALT), values <10 graphed as 0 (j), blood urea nitrogen (BUN) (k), creatinine (CREA) (l), sodium (m), and total bilirubin (n). Gray boxes indicate standard reference ranges for each parameter.

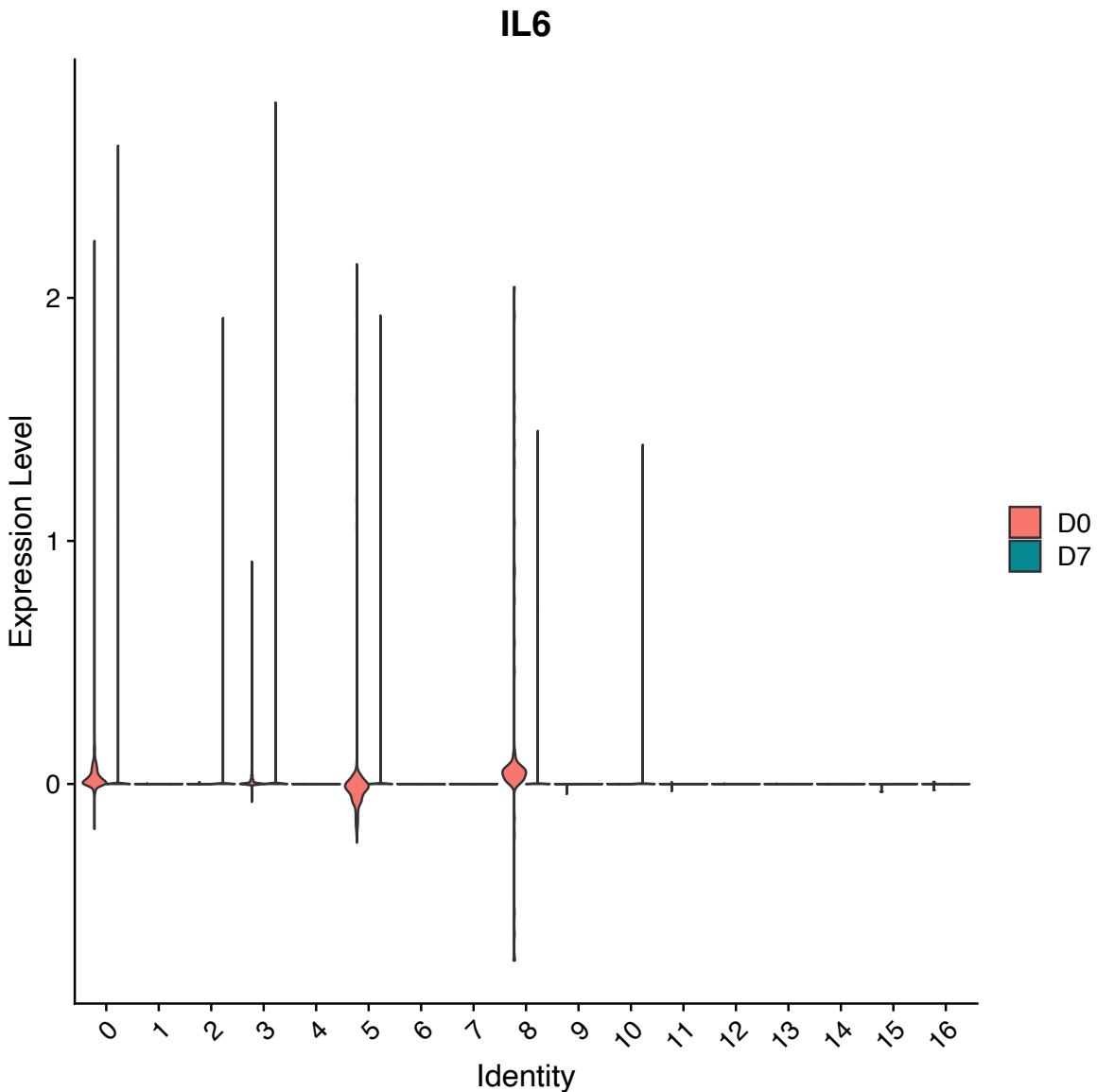


Supplementary Figure 2. Immunological parameters in critically ill COVID19 patients after leronlimab administration. a-d, Peripheral blood CD4+ T cell percentages of CD3+ cells, and plasma levels of IL-1 β (b), IL-8 (c), and CCL5 (d) at days 0 (n=10), 3 (n=10), 7 (n=7), and 14 (n=6) post-leronlimab administration. Healthy controls (n=10) shown in black triangles. Graphs display p-values calculated by Dunn's Kruskal-Wallis test: not significant $p > 0.05$, * $p \leq 0.05$, ** $p \leq 0.01$, *** $p \leq 0.001$, **** $p \leq 0.0001$.

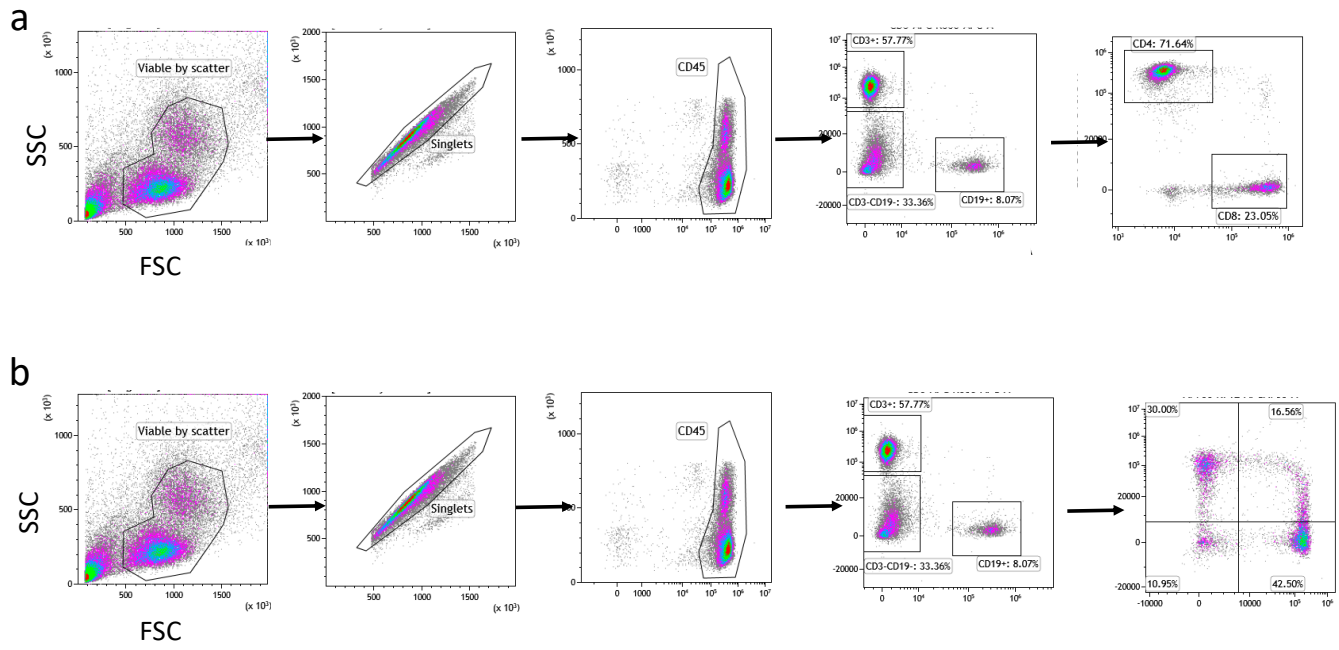


Supplementary Figure 3. Single-cell transcriptomics associated with critical COVID-19.

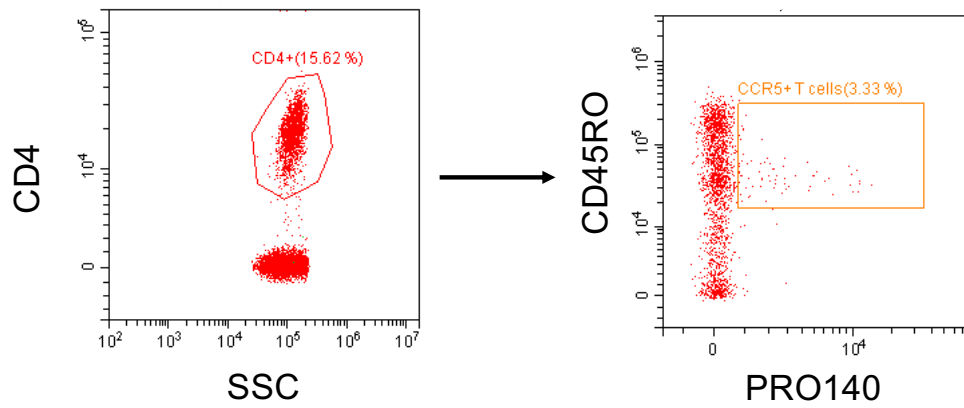
a-k, UMAP feature plots of single-cell transcriptome profiles CD3⁺ T cells versus CD8⁺ T cells versus CD14⁺ myeloid cells versus CD79a B cells (**a**) of CXCL8 (**b**), IL-1 β (**c**), CCL3 (**d**), KLRB1 (**e**), CCL4 (**f**), CD69 (**fg**), CCL5 (**h**), IFITIM3 (**i**), IFI27 (**j**), and Granzyme A (**k**) in a healthy uninfected participant and severe COVID-19 participants.



Supplementary Figure 4. Violin plot of IL-6 gene transcripts in single cell transcriptome clusters of COVID-19 participants before and 7 days following leronlimab. Low levels of IL-6 transcription are observed across multiple cell clusters at day 7 post leronlimab (D7) compared to baseline (D0). Of note, IL6 gene expression significantly reduced in myeloid cell cluster 8 comparing baseline and 7 days post leronlimab.



Supplementary Figure 5. Example gating strategy for flow cytometry. a-b, Gating hierarchy for determination of peripheral blood CD4+ and CD8+ T cells: viable/singlets/CD45+/CD3+CD19-/CD4+ or CD8+ (**a**), and for peripheral blood monocytes: viable/singlets/CD45+/CD3-CD19-/CD14+CD16+ according to methods (**b**).



Supplementary Figure 6. Example gating strategy of CCR5 receptor occupancy for flow cytometry. Leronlimab-PE was used to stain the peripheral blood of a COVID-19 patient that had received 700mg subcutaneous Leronlimab.

Immune Profiling Markers	luorochrom	Clone	Vendor	µg per Test
CD8	BUV496	RPA-T8	BD	0.2
CD4	BUV661	SK3	BD	0.08
CD45	BUV805	HI30	BD	0.1
CD103	BV421	Ber-ACT8	BioLegend	0.2
TIM3	BV605	7D3	BD	0.6
CD56	BV650	HCD56	BioLegend	0.3
LAG-3	BV711	11C3C65	BioLegend	0.3
CD14	BV786	M5E2	BioLegend	0.3
PD-1	BB700	EH12.1	BD	0.6
FoxP3	PE	259D/C7	BD	0.3
CD19	PE-Dazzle5	HIB19	BioLegend	0.15
CD3	APC	UCHT1	BioLegend	0.05
CTLA-4	PE-Cy7	BN13	BioLegend	0.3
CD16	AF700	3G8	BioLegend	0.75
HLA-DR	APC/Fire750	L243	BioLegend	0.6

Receptor Occupancy Markers	luorochrom	Clone	Vendor	µg per Test
CD4	FITC	SK3	BioLegend	0.1
CD14	PerCP Cy5.5	HCD14	BioLegend	0.6
PRO140	PE	PRO140	IncellDx	0.25
CD16	Alexa647	3G8	BD	0.5
FoxP3	Alexa647	206D	Biolegend	0.12
CD45RO	PE-Cy7	UCHL1	Beckman Coulter	0.25

Supplementary Table 1. List of antibodies utilized in the study.