

Definition of follow-up and sources of genotype data

The follow-up of these subjects were defined from the date of study entry to the date of the latest of the two follow-up questionnaires, for details we refer to earlier papers (1,2).

The genotyping and construction of the 313-variant polygenic risk score (PRS) are described in Mavaddat *et al.* (3).

Risk factors in extended BOADICEA and IBIS models

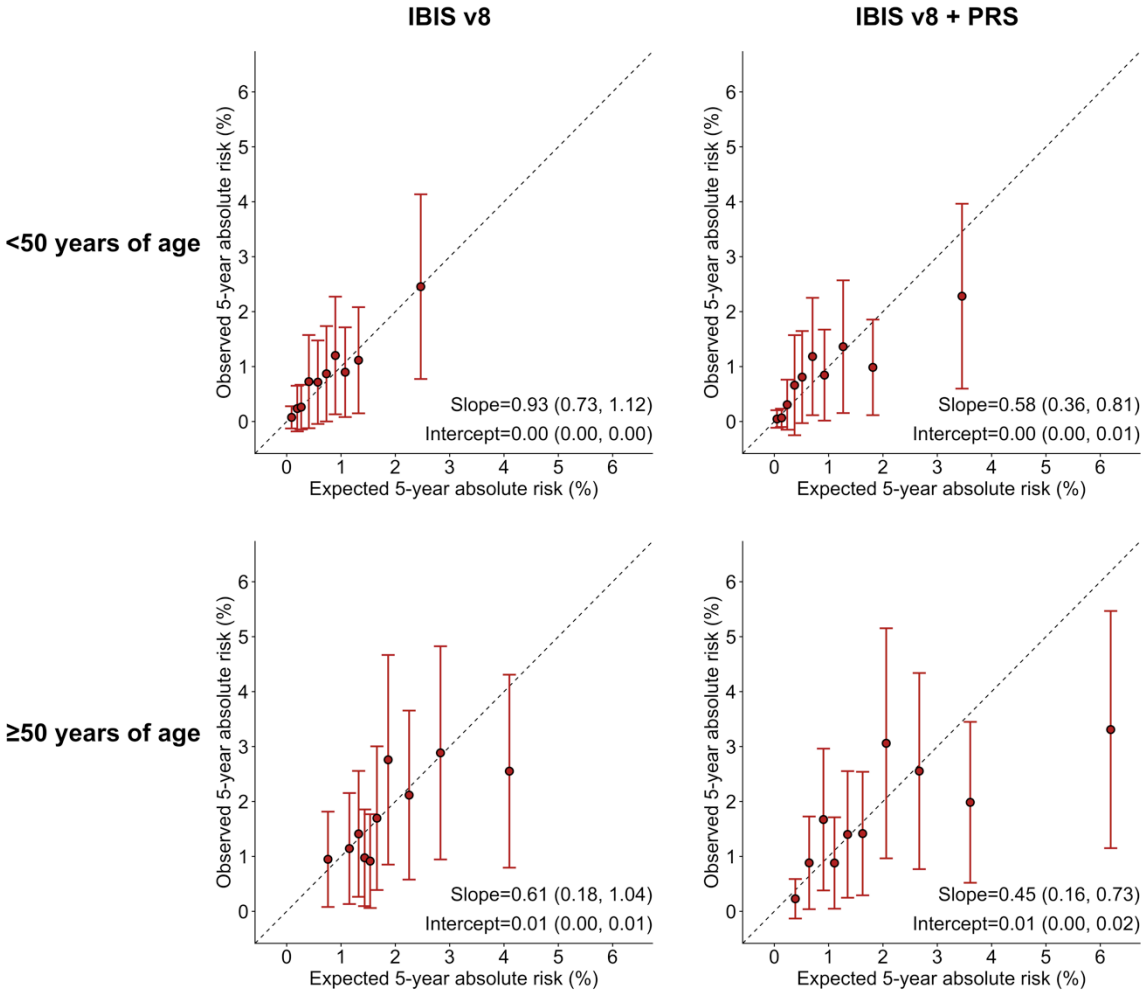
The incorporation of reproductive and lifestyle risk factors and the 313-SNP PRS to the original BOADICEA model (version 5.0) are described in detail in Lee *et al.* (4) (see Table 2 of Lee *et al.* for a summary). For details on the risk factors included in the IBIS (version 8.0) model we refer the reader to Pal Choudhury *et al.* (2), in particular Supplementary Table 4 of that paper. The 313-SNP PRS is incorporated to this model using the approach described in Brentnall *et al.* (5).

Model validation methods

The standardized model validation methods recently implemented in the iCARE tool (6) were used to run comparative validation analyses of five-year absolute risk estimated based on the updated versions of the BOADICEA and Tyrer-Cuzick models. Further details on methods are provided in the Pal Choudhury *et al.* (6). In brief, the models predicting five-year risk of breast cancer were evaluated for calibration, i.e., whether the model-based risks are unbiased for subjects with different risk factor profiles and discrimination, i.e., the ability of the model to separate the cases and controls. The follow-up for a subject was defined to be the minimum of observed follow-up and five years. Absolute risk

calibration was evaluated by comparing the observed number of breast cancer patients within the follow-up period and the expected number of such patients estimated by the model, both overall and within deciles of predicted absolute risk accounting for multiple comparisons for the ten decile categories using Bonferroni correction. The calibration slope and intercepts were reported based on a linear regression of the decile-specific observed proportion of cases within five-years and average of the predicted five-year absolute risk. Calibration was also assessed in terms of relative risks, defined with respect to the average five-year risk in the study population, through a similar comparison of the observed and expected quantities. Model discrimination was assessed using the Area Under the Receiver Operating Characteristics Curve (AUC). We account for the non-random sampling of cases and controls using sampling weights by an inverse probability weighted approach (6).

Supplementary Figure 1: Calibration and discrimination of five-year absolute risk predictions of breast cancer based on the Tyrer-Cuzick model before [IBIS v8] and after [IBIS v8 + PRS] incorporating the recently developed PRS, based on 313 common germline variants, for women in the nested case-control sample of the Generations Study cohort with risk categories based on deciles of predicted five-year absolute risk. Estimates and 95% confidence intervals of calibration slope and intercept are also reported.



IBIS = International Breast Cancer Intervention Study, PRS = polygenic risk score

References

1. Swerdlow AJ, Jones ME, Schoemaker MJ, et al. The Breakthrough Generations Study: Design of a long-term UK cohort study to investigate breast cancer aetiology. *Br J Cancer*. 2011. doi:10.1038/bjc.2011.337
2. Choudhury PP, Wilcox AN, Brook MN, et al. Comparative validation of breast cancer risk prediction models and projections for future risk stratification. *JNCI J Natl Cancer Inst*. 2019. doi:10.1093/jnci/djz113
3. Mavaddat N, Michailidou K, Dennis J, et al. Polygenic Risk Scores for Prediction of Breast Cancer and Breast Cancer Subtypes. *Am J Hum Genet*. 2019. doi:10.1016/j.ajhg.2018.11.002
4. Lee A, Mavaddat N, Wilcox AN, et al. BOADICEA: a comprehensive breast cancer risk prediction model incorporating genetic and nongenetic risk factors. *Genet Med*. 2019. doi:10.1038/s41436-018-0406-9
5. Brentnall AR, van Veen EM, Harkness EF, et al. A case-control evaluation of 143 single nucleotide polymorphisms for breast cancer risk stratification with classical factors and mammographic density. *Int J Cancer*. 2019. doi:10.1002/ijc.32541
6. Pal Choudhury P, Maas P, Wilcox A, et al. iCARE: An R package to build, validate and apply absolute risk models. *PLoS One*. 2020;15(2):e0228198. <https://doi.org/10.1371/journal.pone.0228198>.