

Supplementary Information

Ultra-Sensitive High-Resolution Profiling of Anti-SARS-CoV-2 Antibodies for Detecting Early Seroconversion in COVID-19 Patients

Maia Norman^{*1,2,3}, Tal Gilboa^{*1,2,4}, Alana F. Ogata^{1,2,4}, Adam M. Maley^{1,2,4}, Limor Cohen^{1,2,5}, Yongfei Cai⁶, Jun Zhang⁶, Jared E. Feldman⁷, Blake M. Hauser⁷, Timothy M. Caradonna⁷, Bing Chen^{6,8}, Aaron G. Schmidt^{7,9}, Galit Alter⁷, Richelle C. Charles^{10,11}, Edward T. Ryan^{10,11,12} and David R. Walt^{1,2,4,#}

¹ Department of Pathology, Brigham and Women's Hospital, Boston, MA

² Wyss Institute for Biologically Inspired Engineering at Harvard University, Boston, MA

³ Tufts University School of Medicine, Boston, MA

⁴ Harvard Medical School, Boston, MA

⁵ Department of Chemical Biology, Harvard University, Boston, MA

⁶ Division of Molecular Medicine, Boston Children's Hospital, Boston, MA

⁷ Ragon Institute of MGH, MIT and Harvard, Cambridge, MA

⁸ Department of Pediatrics, Harvard Medical School, Boston, MA

⁹ Department of Microbiology, Harvard Medical School, Boston, MA

¹⁰ Division of Infection Diseases, Massachusetts General Hospital, Boston, MA

¹¹ Department of Medicine, Harvard Medical School, Boston, MA

¹² Department of Immunology and Infectious Diseases, Harvard T.H. Chan School of Public Health, Boston, MA

* Authors contributed equally to this work

Corresponding author, email: dwalt@bwh.harvard.edu

Table of Content:

Supplementary Figure 1: RBD sequence and purification characterization

Supplementary Figure 2: Spike protein sequence and purification characterization

Supplementary Figure 3: Bead coupling validation

Supplementary Tables 1-3: Detector antibody screening

Supplementary Figure 4: Dilution linearity of immunoglobulin assays

Supplementary Table 4: Spike and recovery of the IgG assay

Supplementary Table 5: Clinical Characteristics of the MGH cohort

Supplementary Figure 5: Simoa serological assay results using 1000x dilution

Supplementary Figure 6: ROC curves for all the individual assays

Supplementary Table 6: AUC results for all the individual assays

Figure S1: RBD sequence and purification characterization

RBD represents amino acid residues 319-529 from full-length SARS-CoV-2 spike glycoprotein (GenBank Accession no. MN975262.1)

>SARS CoV2 RBD pVRC

```
GCTAGCCGCGTACAGCCCCTGAAAGCATTGTTTCGCTTTCCCAACATAACAACTT
GTGCCCTTTGGAGAGGTCTTCAATGCTACGAGATTTGCCTCCGTCTACGCTTGGA
ATCGGAAACGGATTAGCAACTGCGTGGCTGACTATTCAGTGCTGTACAACCTGCT
TCTTTCTCAACATTCAAGTGTTACGGGGTCTCTCCAACATAAAGTGAATGATCTTTGTT
TTACGAACGTATACGCAGATTCTTTTCGTAATACGAGGCGATGAGGTGAGGCAGATC
GCCCCGGGCAAACCTGGTAAAATAGCTGACTACAATTACAAGTTGCCGGACGACTT
CACTGGGTGTGTTATTGCCTGGAATTCTAATAACTTGGATTCCAAAGTAGGAGGCAA
TTACAACATCTTTACAGGCTTTTCCGGAAATCTAACTTGAAACCGTTTGAAAGGGA
CATCTCAACGGAGATCTACCAGGCAGGGTCCACGCCTTGCAATGGGGTAGAGGGT
TTTAATTGTTATTTTCCCTTGCAGTCATATGGTTTCCAACCGACAAATGGTGTGGGT
ACCAGCCGTACCGGGTCGTGGTATTGTCCTTCGAGTTGCTCCATGCGCCAGCGAC
TGTATGTGGGCCCAAAAAGGGCGCCGGCTCCAGCCTTGAGGTCCTCTTCCAAGGA
CCCGGTTCAAGGCTCCAGCCACCATCACCATCATCACCACGGGGGTTCTGGCT
CCAGCATGGATGAGAAAACCGGCTGGAGAGGCGGTCACGTCGTAGAGGGGTT
GGCTGGCGAACTCGAACAACCTTCGAGCGAGATTGGAACACCATCCCCAGGGTCAG
CGGGAGCCTTGATGAGCGGCCGCT
```

NheI

KasI

NotI

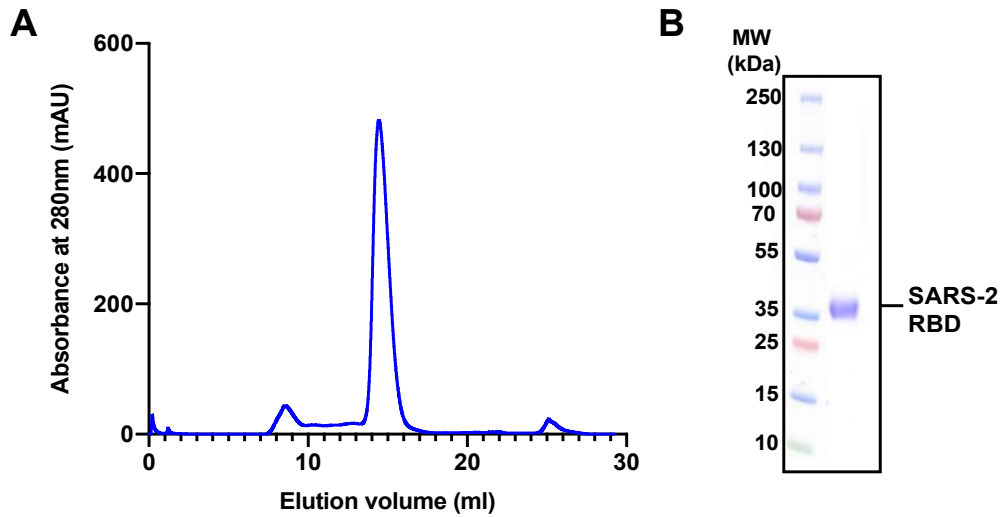
>translation SARS CoV2 RBD pVRC

```
RVQPTEIVRFPNITNLCPFGEVFNATRFASVYAWNRKRISNCVADYSVLYNSASFSTF
KCYGVSPTKLNLDLFTNVYADSFVIRGDEVQRQIAPGQTGKIADYNYKLPDDFTGCVIAW
NSNNLDSKVGNYNYLYRFRKSNLKPFRDISTEIYQAGSTPCNGVEGFNCYFPLQS
YGFQPTNGVGYQPYRVVLSFELLHAPATVCGPKKGAGSSLEVLFGPGSGSSHHHH
HHHHGGSGSSMDEKTTGWRGGHVVVEGLAGELEQLRARLEHHPQGQREP
```

HRV 3C Cleavage Site

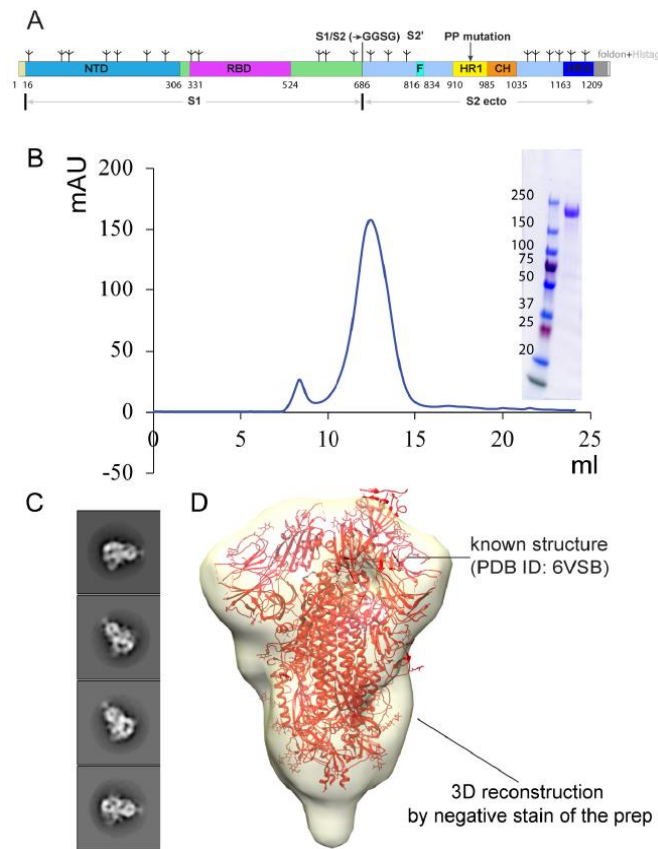
8xHis Tag

Streptavidin-Binding Peptide (SBP) Tag



Supplementary Figure 1. Purification and biochemical characterization of SARS-CoV-2 (SARS-2) RBD. A) Representative size exclusion chromatography profile of SARS-2 RBD eluting at approximately 14.5 ml. B) SDS-PAGE analysis (reducing conditions) of the purified SARS-2 RBD.

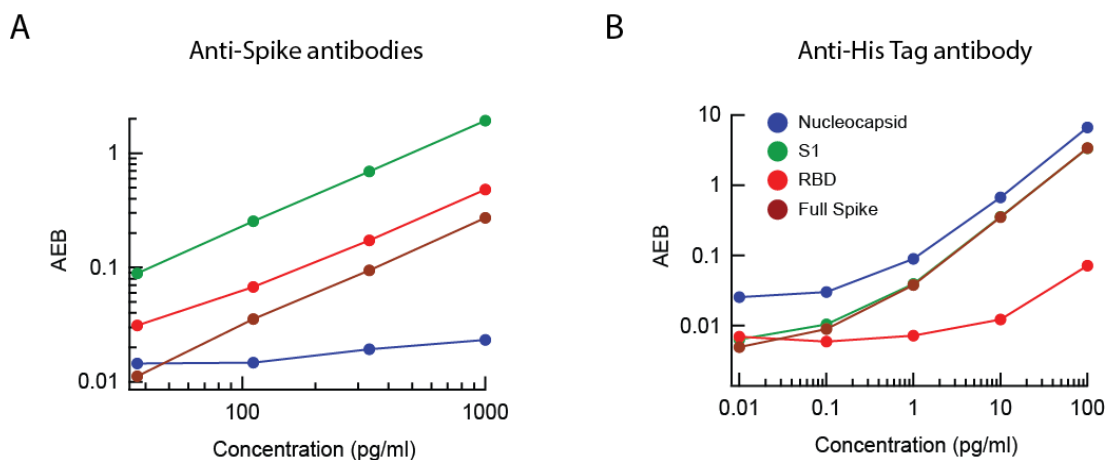
Figure S2: Spike protein sequence and purification validation



Supplementary Figure 2. Production of a stabilized S ectodomain trimer in the prefusion conformation. (A) Schematic representation of the construct design. Various segments include: NTD, N-terminal domain; RBD, receptor-binding domain; S1/S2, S1/S2 cleavage site; S2', S2' cleavage site; F, fusion peptide; HR1, heptad repeat 1; PP mutation, two proline residues introduced to stabilize the prefusion conformation; CH, central helix region; HR2, heptad repeat 2; foldon trimerization tag and a His tag; and tree-like symbols for glycans. (B) The purified S ectodomain trimer was resolved by gel-filtration chromatography. Inset, fractions of the peak were analyzed by Coomassie stained SDS-PAGE. (C) Negative stain EM of the S trimer showing representative 2D class averages, box size 220 Å. (D) 3D reconstruction showing the defined shape of S trimer, superimposed with the atomic model of S trimer (PDB: 6VSB).

Figure S3: Bead coupling validation

In order to confirm that coupling was successful, we tested the beads in two ways. First, we tested the three proteins which had His tags. To that end we loaded all four beads and used a biotinylated anti-his tag antibody for detection in decreasing quantities. As expected, the three His tagged proteins gave high signal while the RBD protein, which had its His tag removed, gave low signal. Next, to ensure the RBD protein had also been conjugated properly to the bead, we introduced a recombinant human anti-RBD domain antibody (CR3022) and used an anti-human IgG biotinylated detector to complete the immunocomplex. Since the Spike protein and S1 also contain the RBD domain we expected that the antibody would bind to all three, but that it would not bind to the nucleocapsid protein.



Supplementary Tables 1-3: Detector antibody screening

In order to identify the best antibodies for detection of IgM and IgA, we screened candidates using a sandwich Simoa immunoassay for the given immunoglobulin. Commercially available human-plasma-derived immunoglobulins was used as our protein standard. Each antibody was screened against all other candidate antibodies in order to establish high binding affinity on the Simoa platform, and tight binders were

selected for further analysis. Below, are tables indicating signal to noise ratios (SNR) for each antibody pair.

Supplementary Table 1: IgA detector cross-testing

IgA detector	411502	MAB4787	AB214003	AB224184	A80109B	AB128739	AB128731
411502		10.59	41.94	48.74	115.36	14.79	1.25
MAB4787	0.16		121.78	4.81	25.7	64.51	4.13
AB214003	61.49	13.28		28.72	58.25	3.88	1.08

Supplementary Table 2: IgM detector cross-testing

IgM detector	MII401	MII402	MAB9435	MAB94351	314502	A80-100B
MII401		3.62	1.59	1.29	41.60	NaN
MII402	33.01		1.14	1.30	23.48	NaN
MAB9435	1.04	1.00		1.10	0.19	0.89
MAB94351	0.94	1.04	0.32		NaN	0.35
314502	15.75	2.72	0.80	0.91		5.49

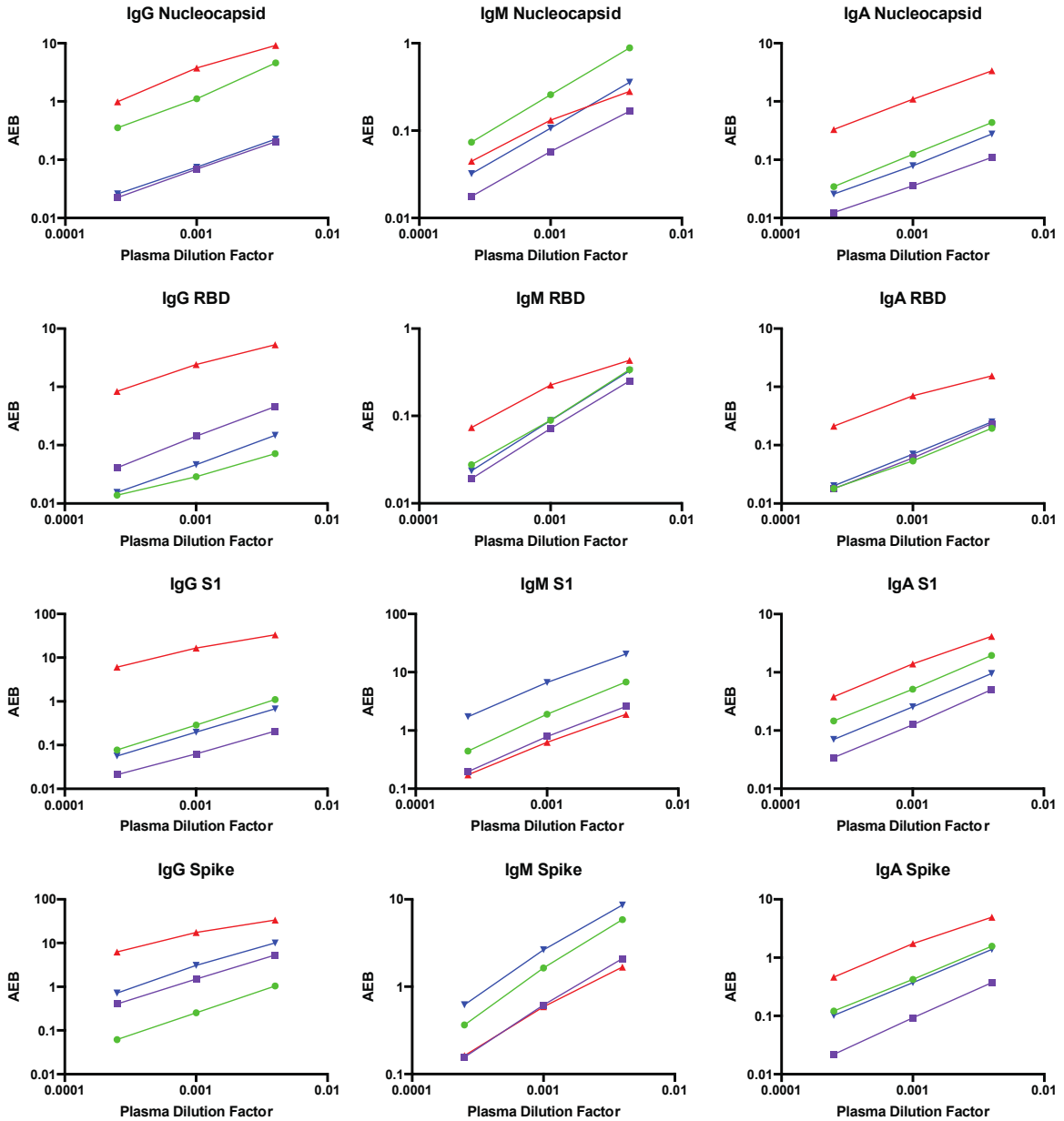
Since the antibodies to be screened for IgG detection were mouse, rabbit and goat IgGs, we could not screen them using the above method because of species cross-reactivity. Instead, we screened anti-IgG detector antibodies using a mixture of three commercially available recombinant human IgGs to S1 (Creative Biolabs CR3022, CBFYR-0119, CBFYR-0120) and viral antigens coated beads. As expected, the beads that showed high SNR are those that have an RBD domain (RBD, S1, Spike) but not the nucleocapsid. A80-148B was chosen for further analysis due to its high SNR.

Supplementary Table 3:

IgG Detector	A80-148B	410701	409302
Nucleocapsid bead SNR	2.68	1.34	1.44
S1 bead SNR	216.29	143.28	10.11
RBD bead SNR	66.31	15.77	24.42
Spike bead SNR	651.27	4.69	34.34

Supplementary Figure 4: Linearity of dilution for all immunoglobulin assays

Four COVID 19+ patient samples were diluted three times (250x, 1000x & 4000x). Below we demonstrate that in all 12 assays the AEB values (signal) diluted linearly for all patients.



Supplementary Table 4: Spike and recovery for IgG assay

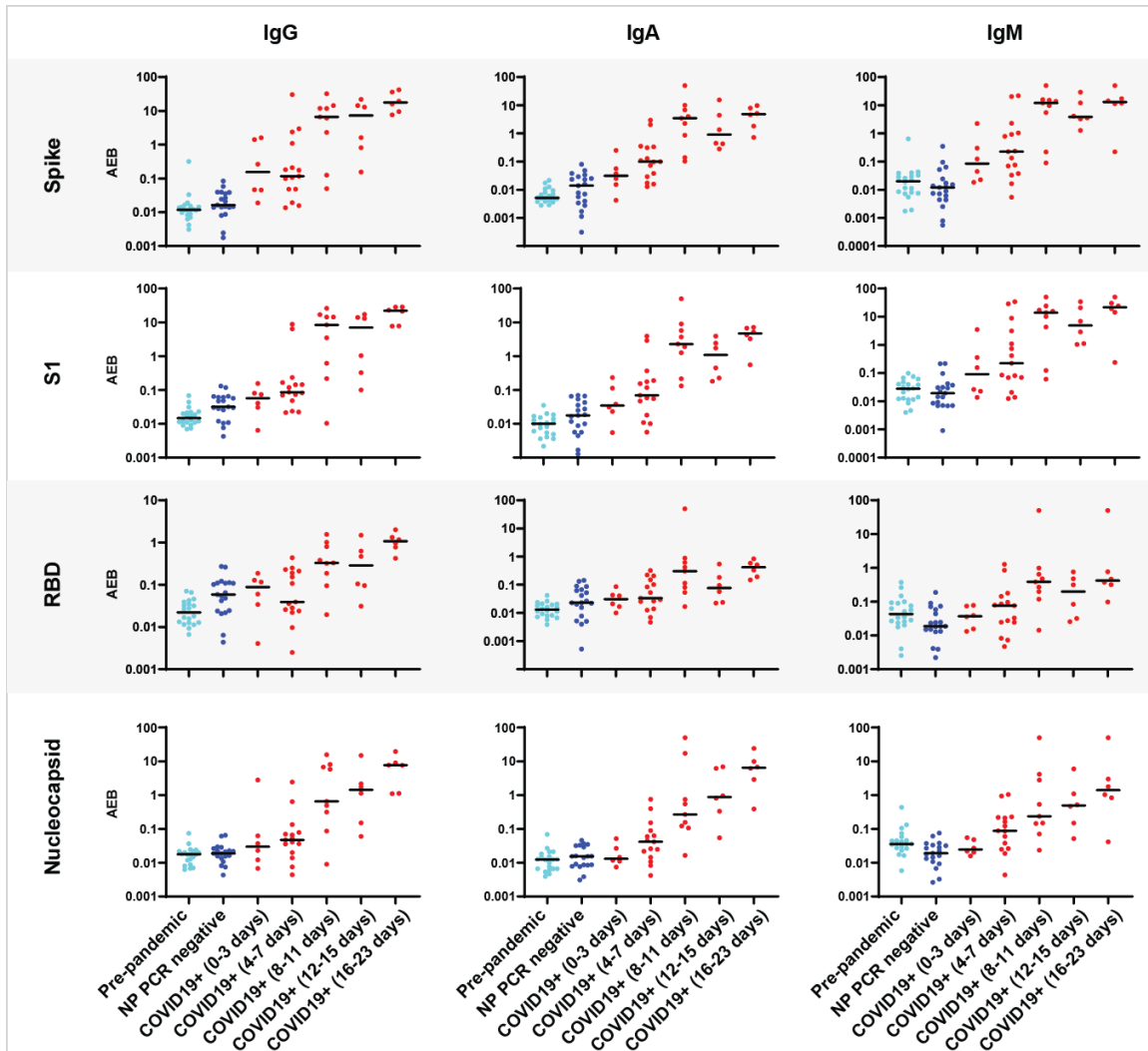
In order to establish that the assays were accurate and quantitative, we created a calibration curve using three recombinant human IgG antibodies to S1 that we serially diluted (Creative Biolabs CR3022, CBFYR-0119, CBFYR-0120). We then spiked these antibodies into pre-pandemic pooled human plasma (BIOIVT) in order to show good recovery at relevant dilution factors. We did not have recombinant IgM or IgA human antibodies to SARS-CoV-2, so this validation could only be done for IgG.

Spiked concentration (pg/ml)	Dilution factor	AEB	Measured concentration (pg/ml)	% Recovery
250	250	0.128359	230.5	92.2
250	500	0.138653	251.1	100.4
250	1000	0.142077	258.1	103.2
1000	250	0.425218	892.7	89.3
1000	500	0.423456	888.1	88.8
1000	1000	0.408272	849.8	85.0

Supplementary Table 5: Clinical characteristics of MGH cohort

Patient characteristics	NP PCR Positive (n= 21)	NP PCR Negative (n=19)	Pre-pandemic control (n=20)
Age (25 th , 75 th quartile)	58 (45, 72)	61 (41, 75)	55 (33, 59)
Male (%)	20 (90.9)	11 (57.9)	8 (40)
Symptoms at presentation (%)			
Fever	16 (72.7)	4 (21)	NA
Cough	17 (77.2)	5 (26.3)	NA
SOB	15 (68.2)	5 (26.3)	NA
Sore throat	0 (0)	1 (5.3)	NA
Myalgia	4 (18.2)	2 (10.5)	NA
Risk Factors			
Diabetes	4 (18.2)	NA	NA
Immunosuppression	2 (9.1)	NA	NA
Lung disease	2 (9.1)	NA	NA
Heart disease	7 (31.8)	NA	NA
Clinical Outcome (%)			
Required Ventilation	12 (54.5)	NA	NA
Discharged from hospital	11 (0.5)	NA	NA
Still admitted	9 (45)	NA	NA
Death	2 (10)	NA	NA
CoV related death	2 (10)	NA	NA

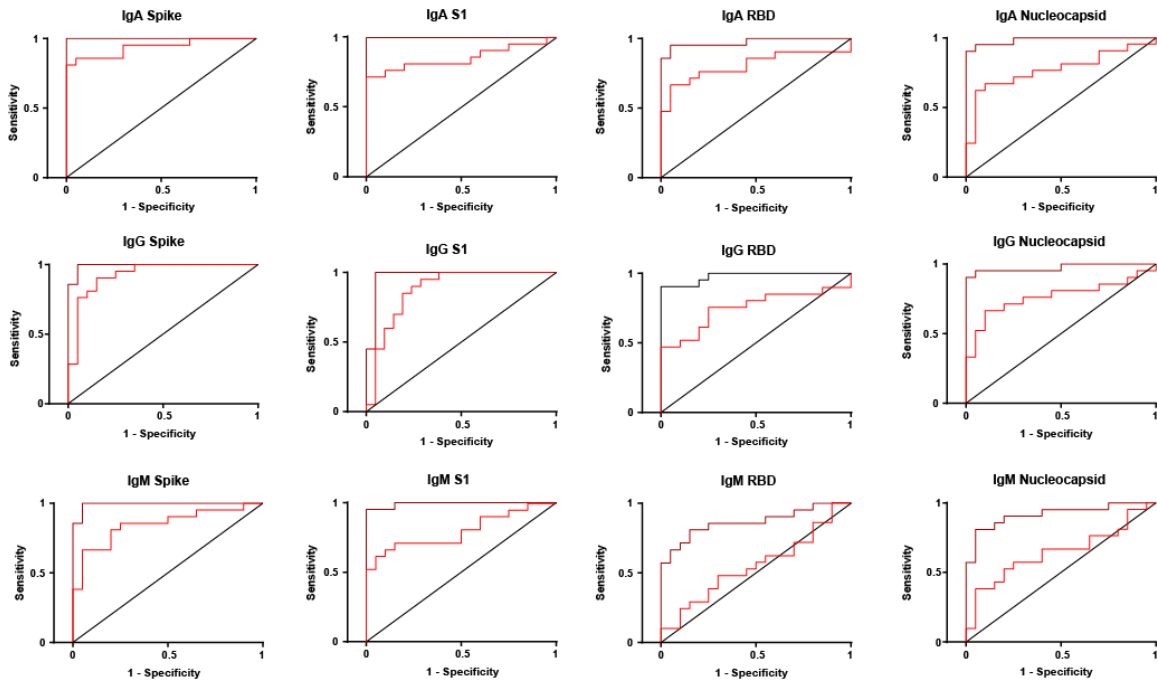
Supplementary Figure 5: Simoa serological assay results using 1000x dilution



Supplementary Figure 5. Simoa serological assay results for IgG, IgM, and IgA against the four viral targets: Spike, S1 subunit, Receptor Binding Domain, and Nucleocapsid for pre-pandemic samples (light blue, n=20), NP PCR negative samples (dark blue, n=19) and COVID-19 positive samples (red, n=21, two timepoints each). The COVID-19 positive samples were divided into five groups according to time since symptom onset. Black lines indicate the mean AEB (average enzyme per bead) value of each population.

Supplementary Figure 6: ROC curves for all the individual assays

Receiver operating characteristic curves (ROC) curves were plotted for each assay at 4000x dilution comparing the pre-pandemic group (n=20) to COVID19+ patients, separated into two lines for discrimination (first week n=21) and discrimination (after one week n=21).



Supplementary Table 6: AUC results

AUC results for all ROC curves presented in Supplementary figure 5

Immunoglobulin	Viral target	AUC - Early	95% confidence interval	AUC - Late	95% confidence interval
IgM	Spike	0.85	0.7253 - 0.97	0.99	0.9757 - 1
	S1	0.80	0.6640 - 0.9408	0.99	0.9757 - 1
	RBD	0.55	0.3662 - 0.7243	0.87	0.7533 - 0.9811
	Nucleocapsid	0.64	0.4695 - 0.8162	0.92	0.8282 - 1
IgG	Spike	0.93	0.8467 - 1	0.99	0.9757 - 1
	S1	0.88	0.767-0.9901	0.97	0.9217 - 1
	RBD	0.76	0.6014-0.9129	0.98	0.9435 - 1
	Nucleocapsid	0.77	0.6122 - 0.9212	0.97	0.9254 - 1
IgA	Spike	0.94	0.8635 - 1	1.00	1.000-1.000
	S1	0.85	0.7214 - 0.9786	1.00	1.000-1.000
	RBD	0.81	0.6631 - 0.9512	0.97	0.9284 - 1
	Nucleocapsid	0.77	0.6168 - 0.9213	0.99	0.9581 - 1
IgM	All antigens	0.87	0.7587-0.9747	1.00	1.000-1.000
IgG	All antigens	0.93	0.8487-1	0.9976	0.991-1
IgA	All antigens	0.95	0.8825 - 1	1.00	1.000-1.000