

Supplementary Materials

for

***ACE2* and *TMPRSS2* expression by clinical, HLA, immune, and microbial correlates across 34 human cancers and matched normal tissues: implications for SARS-COV-2 COVID-19**

Running Title: Multi-dimensional correlates of *ACE2* and *TMPRSS2* expression

Authors: Riyue Bao^{1,2}, Kyle Hernandez^{3,4}, Lei Huang⁵, Jason J. Luke^{1,2,*}

¹University of Pittsburgh Medical Center Hillman Cancer Center, Pittsburgh, PA

²Department of Medicine, University of Pittsburgh, Pittsburgh, PA

³Center for Translational Data Science, University of Chicago, Chicago, IL

⁴Department of Medicine, University of Chicago, Chicago, IL

⁵Center for Research Informatics, University of Chicago, Chicago, IL

***Corresponding Author:**

Jason J. Luke, MD, FACP

Associate Professor of Medicine

University of Pittsburgh Medical Center and Hillman Cancer Center

5150 Centre Ave. Room 564

Pittsburgh PA 15232

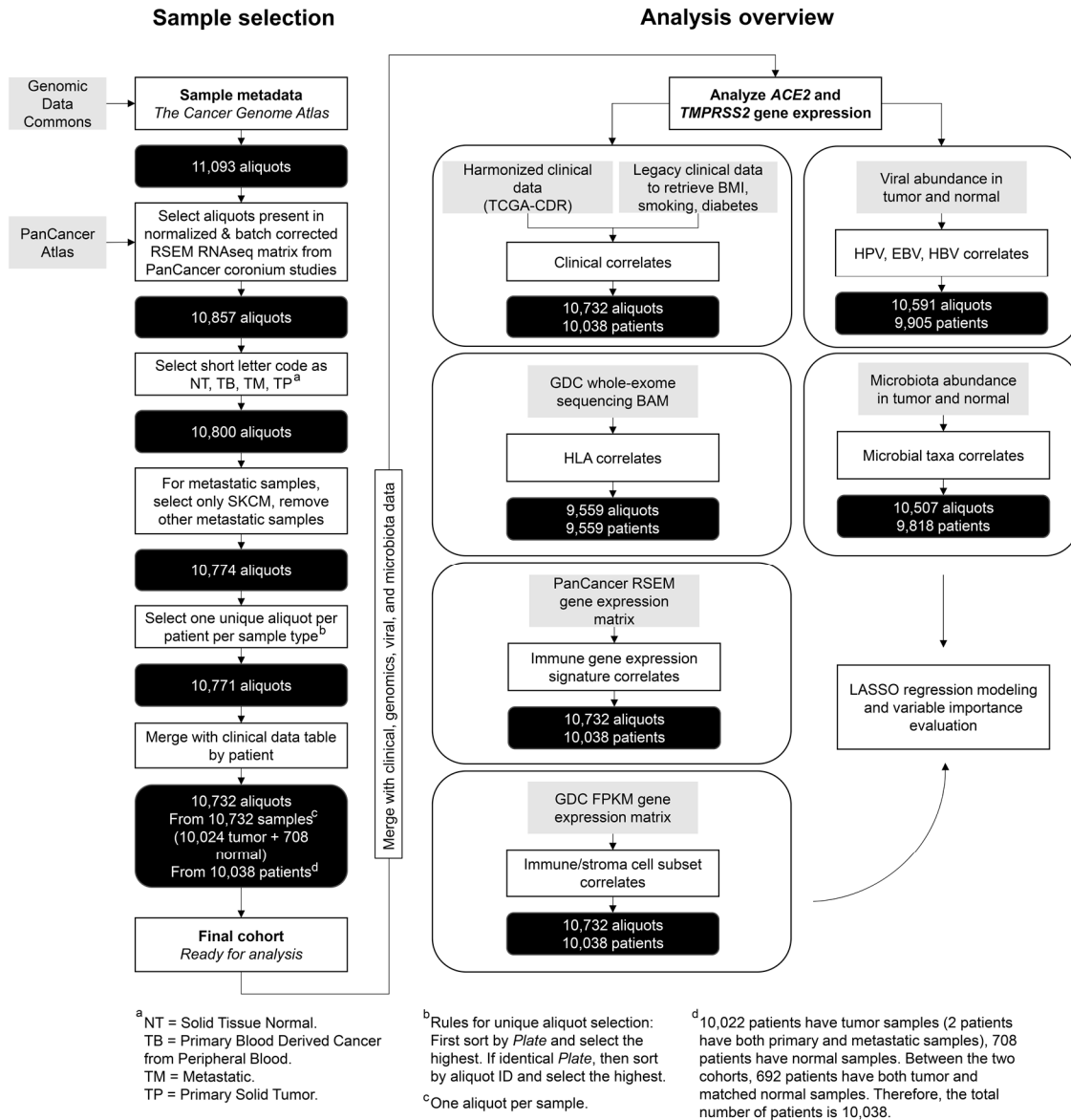
Telephone: (412) 647-2811

Fax: (412) 623-7948

lukejj@upmc.edu

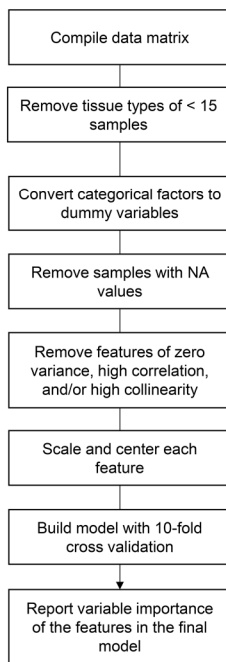
This document contains **Supplementary Figures 1** and **2**. **Supplementary Tables 1** to **11** are provided separately as an Excel Spreadsheet file.

Supplementary Figures

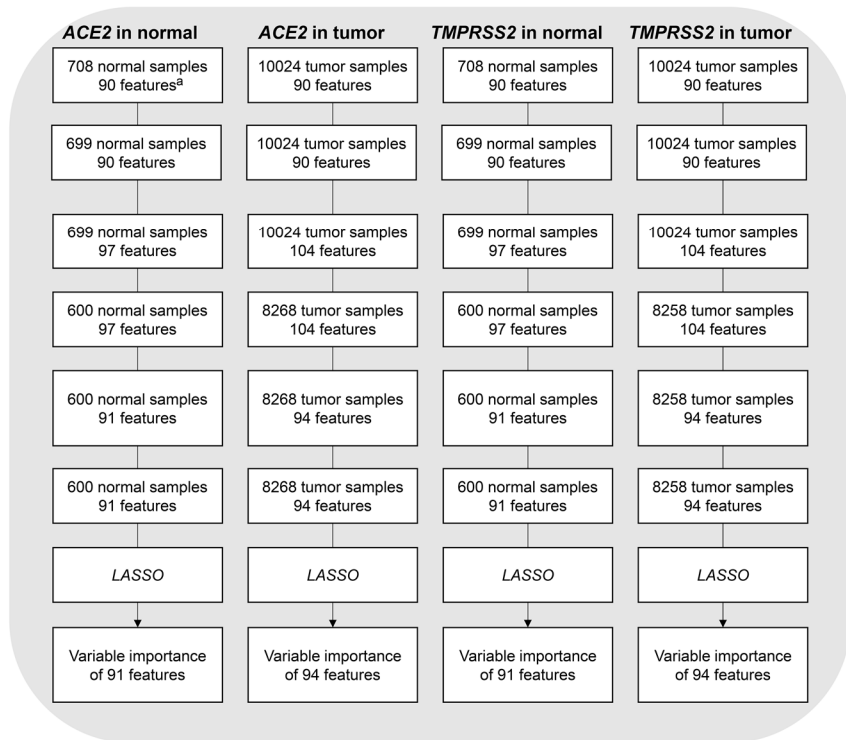


Supplementary Figure 1. Sample selection workflow.

Analysis procedure



Four analysis sets



^a 90 features consist of: tissue type, clinical (age, gender, race), immune expression signatures (ISG, T cell-inflamed, myeloid, angiogenesis, and TGF- β), immune cell subsets (macrophage M1, macrophage M2, CD8 T cells, CD4 T cells), non-immune cell subsets (epithelial cell), HPV status, and 75 microbiota taxa identified from microbiota correlation analysis.

Supplementary Figure 2. Analytical workflow for variable importance evaluation using LASSO regression.