

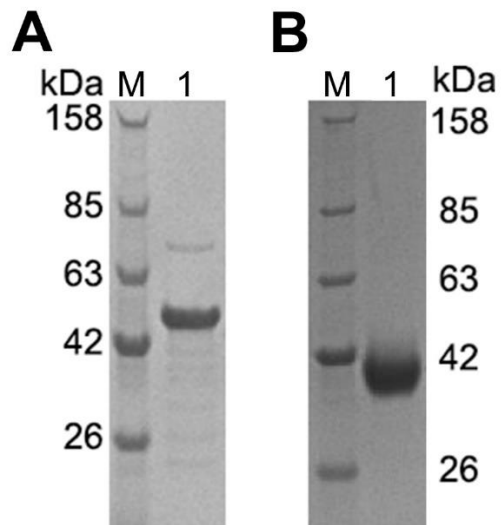
Supplementary Table 1. Information of the 87 RT-qPCR confirmed COVID-19 patients.

Patients No.	Disease severity	Underlying disease*
1	Critical (ICU)	1, 2, 3
2	Critical (ICU)	4, 5, 6
3	Critical (ICU)	7, 4, 8, 9
4	Critical (ICU)	10, 11
5	Critical (ICU)	5, 12
6	Severe	4
7	Severe	none
8	Severe	none
9	Severe	4
10	Severe	none
11	Severe	none
12	Severe	4, 13
13	Severe	1
14	Severe	none
15	Severe	none
16	Severe	4, 7, 10, 14, 15
17	Severe	4
18	Severe	4
19	Severe	4, 10, 16
20	Severe	none
21	Severe	none
22	Severe	17
23	Moderate	none
24	Moderate	none
25	Moderate	none
26	Moderate	none
27	Moderate	18
28	Moderate	none
29	Moderate	19, 5
30	Moderate	none
31	Moderate	20, 21, 22
32	Moderate	4, 10, 19
33	Moderate	none
34	Moderate	none
35	Moderate	19
36	Moderate	4
37	Moderate	10, 1, 23
38	Moderate	none
39	Moderate	none
40	Moderate	none
41	Moderate	19, 20
42	Moderate	4

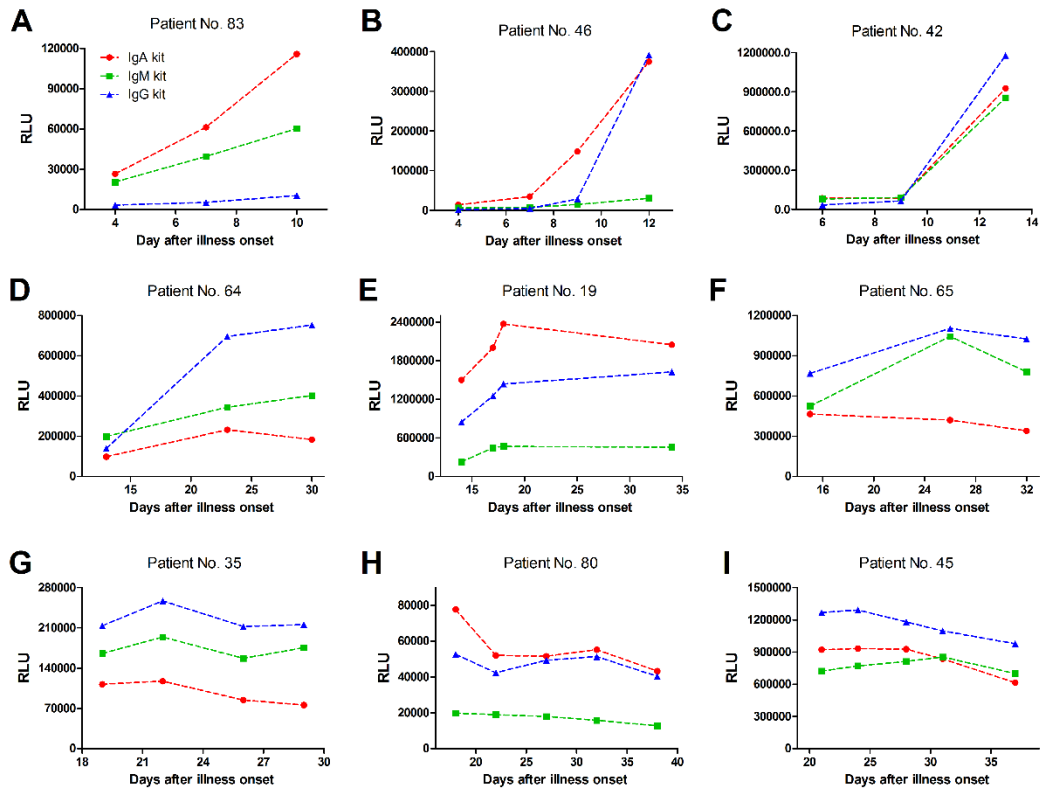
43	Moderate	24
44	Moderate	25
45	Moderate	none
46	Moderate	none
47	Moderate	3, 4, 10, 26
48	Moderate	none
49	Moderate	none
50	Moderate	none
51	Moderate	27
52	Moderate	4, 28
53	Moderate	none
54	Moderate	none
55	Moderate	4, 10, 29
56	Moderate	none
57	Moderate	none
58	Moderate	4,30
59	Moderate	none
60	Moderate	none
61	Moderate	none
62	Moderate	none
63	Moderate	none
64	Moderate	31, 32
65	Moderate	10
66	Moderate	none
67	Moderate	none
68	Moderate	33
69	Moderate	none
70	Moderate	1
71	Moderate	none
72	Moderate	none
73	Moderate	none
74	Moderate	1
75	Moderate	none
76	Moderate	none
77	Moderate	none
78	Moderate	none
79	Mild	none
80	Mild	none
81	Mild	none
82	Mild	none
83	Mild	4,34
84	Mild	4
85	Mild	none
86	Mild	none

Among these COVID-19 patients, five were critical and admitted to the ICU, one was died of cerebral hemorrhage after stroke. Seventeen patients had severe COVID-19, and all of whom required oxygen supplementation. Fifty-six patients had moderate and nine patients had mild COVID-19. The median age of patients was 48 years (range 21–91), and the average age was 47.4 years. Thirty-seven (42.5%) patients had underline illnesses; the most common one was hypertension in 18 patients (20.7%). A total 216 serum samples were taken from the 87 COVID-19 patients, 56 (64.4%), 38 (43.7%), 22 (25.3%) and 10 (11.5%) patients were taken blood for more than 2, 3, 4 and 5 times, respectively.

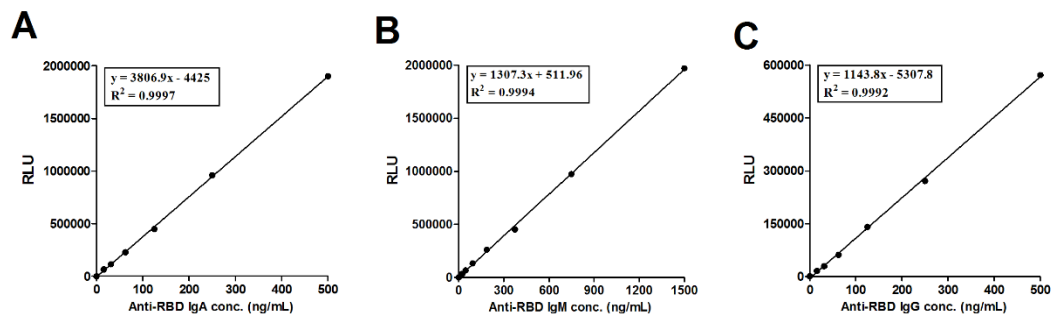
*Underlying illness: 1. Hepatitis B; 2. Postoperative hepatocellular carcinoma; 3. Respiratory failure; 4. Hypertension; 5. Cerebral infarction; 6. Upper gastrointestinal bleeding; 7. Coronary heart disease; 8. Cholecystectomy; 9. Benign prostatic hyperplasia; 10. Diabetes; 11. 1. Hepatitis B; 2. Postoperative hepatocellular carcinoma; 3. Respiratory failure; 4. Hypertension; 5. Cerebral infarction; 6. Upper gastrointestinal bleeding; 7. Coronary heart disease; 8. Cholecystectomy; 9. Benign prostatic hyperplasia; 10. Diabetes; 11. Rheumatoid Arthritis; 12. Hernia surgery; 13. Lower extremity arterial occlusion; 14. Heart valve disease; 15. Atrial fibrillation; 16. Expansion; 17. Car accident caused multiple soft tissue, intracranial hemorrhage, and improved after conservative; 18. Chronic gastritis; 19. Hyperlipidemia 20. Leukopenia; 21. Anemia; 22. Sinus tachycardia; 23. Fatty Liver; 24. Proteinuria; 25. Hyperthyroidism; 26. Hypoproteinemia; 27. Uremia; 28. Left nephrectomy; 29. Breast cancer; 30. Parkinson; 31. Frozen shoulder; 32. Rheumatism; 33. Nasal drip syndrome; 34. Hyperuricemia.



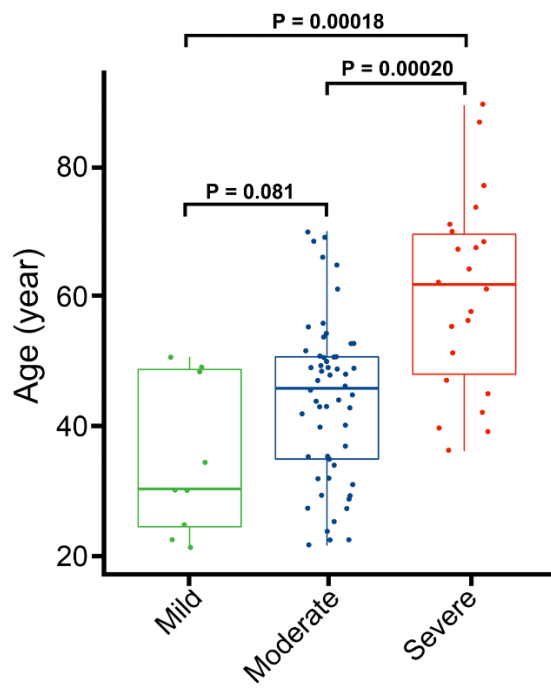
Supplementary Figure 1. Purification of recombinant SARS-CoV-2 nucleocapsid protein (NP, A) and receptor-binding domain (RBD, B) of the spike protein. After SDS-PAGE separation based on molecular weight (kDa) together with protein size markers (M), the proteins were stained with Coomassie Blue. A is staining of purified NP (predicted molecular mass of 49.5 kDa). B is staining of purified RBD (predicted molecular mass of 30.3 kDa).



Supplementary Figure 2. Representative testing results of sera collected at consecutive time points after illness onset by RBD-specific kits (IgA, red; IgM green; and IgG, blue). A-I were testing results of sera from nine individual COVID-19 patients.



Supplementary Figure 3. Standard curves for antibody concentration vs. RLU. Standard curves were constructed based on immunoassay of 7-8 concentrations of anti-RBD IgA (A) or IgM (B) or IgG (C) antibodies purified from a serum pool of SARS-CoV-2 infected patients.



Supplementary Figure 4. Correlation between patient age and disease severity. Mild: 9; moderate: 56, and severe: 22 patients.