

Supplementary Web Appendix Regarding The Manuscript:

Liver transplantation without graft ischemia in humans

by

Zhiyong Guo, Qiang Zhao, Shanzhou Huang, Changjun Huang, et al

Table of contents	PAGE
TABLES	3-11
Table S1. The characteristics of the extended criteria donors.	3
Table S2. Organ utilization in the two groups.	4
Table S3. The characteristics and transplant outcomes of kidney transplant recipients.	5-6
Table S4. The donor and recipient operation characteristics.	7
Table S5. The liver functions tests of the patients with early allograft dysfunction (EAD).	8-9
Table S6. Causes of patient death.	10
Table S7. The liver function recovery in the extended versus standard criteria donor subgroups.	11
FIGURES	12-17
Figure S1. The results of renal function tests and patient/graft survival post renal transplantation in the ischemia-free liver transplantation (IFLT) and conventional liver transplantation donors.	12
Figure S2. The body temperature of the recipients in the ischemia-free liver transplantation (IFLT) and conventional liver transplantation (CLT) group.	13
Figure S3. The results of coagulation function tests post-transplantation.	14
Figure S4. Parameters of machine perfusion during ischemia-free liver transplantation (IFLT).	15
Figure S5. The results of liver function tests post-transplantation between the two groups.	16
Figure S6. Ischemia-free liver transplantation (IFLT) facilitates successful transplantation of extended criteria donor (ECD) livers.	17
Figure S7. Patient (A) and graft survival (B) in patients with versus without early allograft dysfunction (EAD) in the conventional liver transplantation (CLT) group.	18

Supplemental Table 1. The characteristics of the extended criteria donors.

Donors	Criteria	Donors	Criteria
IFLT-01	85-95% macrovesicular steatosis	CLT-34	30-40% macrovesicular steatosis
IFLT-08	Tbil 4.89mg/dL	CLT-38	35% macrovesicular steatosis
IFLT-13	Tbil 3.40mg/dL	CLT-50	Tbil 3.58mg/dL
IFLT-15	Age 66 years	CLT-51	Na ⁺ 168mmol/L
IFLT-17	Na ⁺ 166mmol/L	CLT-55	Age 62 years; Na ⁺ 177mmol/L; Tbil 3.66mg/dL
IFLT-23	30-40% macrovesicular steatosis	CLT-57	Na ⁺ 166mmol/L
IFLT-25	Tbil 4.01mg/dL	CLT-60	Na ⁺ 168mmol/L
IFLT-27	Age 64 years	CLT-61	Na ⁺ 185mmol/L
IFLT-33	Tbil 3.91mg/dL	CLT-73	Na ⁺ 169mmol/L
IFLT-34	Na ⁺ 169mmol/L	CLT-84	Na ⁺ 166mmol/L
IFLT-37	Tbil 3.98mg/dL	CLT-86	Tbil 8.42mg/dL; Na ⁺ 168mmol/L
IFLT-38	Tbil 3.56mg/dL	CLT-91	Na ⁺ 174mmol/L
CLT-01	Na ⁺ 177mmol/L	CLT-92	Na ⁺ 166mmol/L
CLT-02	Tbil 4.69mg/dL	CLT-94	Tbil 6.88mg/dL
CLT-05	Tbil 3.96mg/dL; CIT 736 min	CLT-96	30-40% macrovesicular steatosis; CIT 756 min
CLT-11	Na ⁺ 184mmol/L	CLT-104	Tbil 3.15mg/dL
CLT-13	Na ⁺ 174mmol/L	CLT-112	Tbil 3.39mg/dL
CLT-18	30-40% macrovesicular steatosis	CLT-118	CIT 764 min
CLT-20	Na ⁺ 173mmol/L	CLT-127	Tbil 4.33mg/dL
CLT-29	Tbil 6.82mg/dL	CLT-128	60% macrovesicular steatosis
CLT-33	Na ⁺ 168mmol/L		

CIT, cold ischemia time; CLT, conventional liver transplantation; extended criteria donors (ECD); IFLT, ischemia-free liver transplantation; Tbil, total bilirubin.

Supplemental Table 2. Organ utilization in the two groups.*

Donor organ disposition	IFLT group (n=38)			CLT group (n=130)			P values†
	Authorization not obtained or not requested	Retrieved but discarded	Transplanted	Authorization not obtained or not requested	Retrieved but discarded	Transplanted	
Left kidney	1 (2.6%)	3 (7.9%)	34 (89.5%)	3 (2.3%)	12 (9.2%)	115 (88.5%)	1.00
Right kidney	1 (2.6%)	4 (10.5)	33 (86.8%)	3 (2.3%)	15 (11.5%)	112 (86.2%)	1.00
Kidney (overall)	2 (2.6%)	7 (9.2%)	67 (88.2%)	6 (2.4%)	27 (10.1%)	227 (88.5%)	1.00
Heart	26 (68.4%)	2 (5.3%)	10 (26.3%)	116 (89.2%)	0	14 (10.8%)	0.002
Lung	33 (86.8%)	0	5 (13.2%)	124 (95.4%)	0	6 (4.6%)	0.13
Pancreas	38 (100%)	0	0	126 (96.9%)	1 (0.8%)	3 (2.3%)	1.00

* Data are presented as n (%). IFLT, ischemia-free liver transplantation; CLT, conventional liver transplantation.

† P values apply to comparisons of the entire IFLT group with the CLT group and were calculated with Fisher's exact test for discrete variables.

Supplemental Table 3. The characteristics and transplant outcomes of kidney transplant recipients.*

	CLT, N=217	IFLT, N=67	P values†
Age (years)	46.4 ± 12.2	48.9 ± 13.6	0.16
Sex			
Male	162 (74.7%)	48 (71.6%)	0.64
Female	55 (25.3%)	19 (28.4%)	
Body mass index	22.5 ± 3.5	22.4 ± 3.6	0.84
Blood type			<0.001
A	76 (35.0%)	7 (10.4%)	
B	38 (17.5%)	19 (28.4%)	
AB	15 (6.9%)	1 (1.5%)	
O	88 (40.6%)	40 (59.7%)	
Underlying disease			0.96
Chronic glomerulonephritis	179 (82.5%)	56 (83.6%)	
IgA nephropathy	17 (7.8%)	5 (7.5%)	
Diabetic nephropathy	10 (4.6%)	2 (3.0%)	
Polycystic kidney disease	4 (1.8%)	1 (1.5%)	
Other‡	7 (3.2%)	3 (4.5%)	
Cold ischemia time (min)	527 ± 224	479 ± 233	0.13
Primary nonfunction	1 (0.5%)	0	1.00
Delayed graft function	23 (10.6%)	6 (9.0%)	0.82
Hospital stay (days)	19.6 ± 11.9	20.2 ± 11.7	0.74

* Data are presented as n (%) or the mean ± standard deviation. Of the 130 CLT and 38 IFLT donors, 217 kidneys and 67 kidneys were transplanted, respectively. CLT, conventional liver transplantation; IFLT, ischemia-free liver transplantation.

† P values apply to comparisons of the entire IFLT group with the CLT group and were calculated with Fisher's exact test for discrete variables and with a 2-tailed Student's T-test for continuous variables.

‡Other underlying disease: Henoch-Schonlein purpura nephritis, membranous nephropathy, systemic lupus erythematosus with nephritis, hypertensive nephropathy or nephritis of an unknown origin.

Definition of DGF: Need for at least one postoperative dialysis session during the first 7 days after transplantation or postoperative day 10 creatinine concentration has not fallen below 221 $\mu\text{mol/L}$.¹

Definition of PNF: Permanent loss of allograft function starting immediately after transplantation.²

1. Perico N, Cattaneo D, Sayegh MH, Remuzzi G. Delayed graft function in kidney transplantation. *Lancet* 2004;364:1814-27.
2. El-Zoghby ZM, Stegall MD, Lager DJ, et al. Identifying specific causes of kidney allograft loss. *Am J Transplant* 2009;9:527-35.

Supplemental Table 4. The donor and recipient operation characteristics. *

Characteristics	IFLT (N=38)	CLT (N=130)	P Value†
Liver retrieval time (min)	207 (159-383)	45 (26-128)	<0.001
Anhepatic phase (min)	48.5 (30-100)	50.5 (23-125)	0.97
Recipient operation time (min)	385 (238-515)	445 (285-945)	<0.001
Blood loss (ml)	1925 (100-5,000)	2000 (300-15,000)	0.49
Intraoperative use of RBCs (ml)	800 (0-3,228)	1125 (0-15,600)	0.16
Intraoperative use of FFP (ml)	1600 (300-3,300)	1550 (0-9,550)	0.94

* Data are presented as the median (range). IFLT, ischemia-free liver transplantation; CLT, conventional liver transplantation; RBC, red blood cell; FFP, fresh frozen plasma.

† P values apply to comparisons of the entire IFLT group with the CLT group and were calculated with the 2-tailed Mann-Whitney test for continuous variables.

Supplemental Table 5. Liver functions tests of patients with early allograft dysfunction (EAD).

Recipients	Peak ALT (U/L) within 7 days	Peak AST (U/L) within 7 days	INR on Day 7	Tbil on Day 7 (mg/dL)
IFLT-7	4,112	3,474	0.75	11.87
CLT-4	8,515	2,629	1.07	9.08
CLT-7	4,013	976	1.13	9.51
CLT-8	1,255	537	1.10	10.11
CLT-11	4,458	1,596	1.16	10.75
CLT-12	6,740	2,232	1.08	22.98
CLT-19	2,778	1,819	1.31	2.97
CLT-20	2,541	633	NA	NA
CLT-21	1,130	408	1.07	17.62
CLT-25	2,496	781	1.20	13.75
CLT-28	5,108	3,872	1.35	5.67
CLT-30	3,428	733	1.11	7.46
CLT-32	2,407	983	1.07	2.22
CLT-36	952	644	0.97	14.88
CLT-38	13,114	4,965	1.32	21.13
CLT-39	1,677	86	1.64	24.17
CLT-40	480	211	1.06	18.71
CLT-41	2,861	1,176	1.16	10.61
CLT-42	4,635	1,177	1.08	13.34
CLT-44	9,951	5,380	1.07	10.65
CLT-58	2,817	2,027	1.22	21.60
CLT-60	4,186	2,422	1.16	32.70
CLT-61	7,395	3,735	NA	NA
CLT-63	1,600	437	1.32	22.58
CLT-64	2,227	445	1.15	2.65
CLT-65	4,849	2,636	1.10	5.43
CLT-66	2,671	843	1.10	5.34
CLT-69	3,339	1,803	1.07	9.90
CLT-70	6,076	3,792	1.02	23.41
CLT-73	2,270	994	1.24	6.53
CLT-75	3,974	1,748	1.16	3.45

CLT-79	2,026	1,428	1.18	10.20
CLT-82	5,097	2,243	NA	8.67
CLT-83	1,285	715	1.07	23.00
CLT-86	3,244	1,387	NA	6.86
CLT-87	884	718	2.28	8.44
CLT-89	25,083	10,500	1.20	21.46
CLT-90	711	351	1.11	13.88
CLT-91	12,464	3,105	0.90	24.12
CLT-93	3,660	876	1.32	1.80
CLT-94	7,236	1,357	0.99	4.99
CLT-101	3,986	1,415	1.14	15.80
CLT-102	2,504	1,060	0.91	3.81
CLT-103	443	152	0.93	19.09
CLT-104	3,596	693	1.33	20.49
CLT-108	4,086	777	0.98	1.73
CLT-110	809	272	1.51	13.98
CLT-112	1,171	512	1.89	3.16
CLT-113	2,035	1,186	1.16	19.31
CLT-114	10,728	3,803	1.04	22.50
CLT-115	9,289	2,834	1.10	NA
CLT-116	1,358	1,042	1.00	14.19
CLT-117	2,499	1,074	1.10	2.42
CLT-119	1,633	385	1.06	NA
CLT-122	4,121	2,811	1.26	10.20
CLT-123	2,110	1,468	1.11	2.30
CLT-125	10,686	6,797	1.10	16.77
CLT-130	750	506	2.28	7.98

ALT, alanine aminotransferase; AST, aspartate aminotransferase; CLT, conventional liver transplantation; EAD, early allograft dysfunction; IFLT, ischemia-free liver transplantation; INR, international normalized ratio; NA, not applicable; Tbil, total bilirubin.

Supplemental Table 6. Causes of patient death.

Recipients	Cause of death	Survival days
IFLT-28	Lung infection; Septic shock	22
CLT-03	Rejection	317
CLT-05	HAT; Portal vein thrombosis; Lung infection	14
CLT-18	HAT; Lung infection; Septic shock	9
CLT-20	PNF	1
CLT-34	Lung infection; Septic shock	210
CLT-38	Lung infection; Acute kidney injury; Suspicious portal vein thrombosis	40
CLT-39	Intra-abdominal infection; Hepatic necrosis; Septic shock	33
CLT-60	Heart failure; Acute kidney injury	27
CLT-61	PNF; Lung infection; Septic shock; Acute kidney injury	9
CLT-69	Lung infection; Septic shock	19
CLT-83	Intra-abdominal infection; Lung infection; Liver failure	23
CLT-85	HAT; Biliary leakage; Intra-abdominal infection	149
CLT-89	HAT; Intra-abdominal infection	22
CLT-91	Liver failure; Acute kidney injury	27
CLT-101	Tumor recurrence	351
CLT-103	Esophageal-mediastinal fistula; Mediastinal infection; Pyothorax; Septic shock	80
CLT-115	PNF; Lung infection; Septic shock	4
CLT-116	HAT; Intra-abdominal hemorrhage	16
CLT-118	HAT; Intra-abdominal infection	118
CLT-119	PNF	1

CIT, cold ischemia time; CLT, conventional liver transplantation; HAT; hepatic artery thrombosis; IFLT, ischemia-free liver transplantation.

Supplemental Table 7. Liver function recovery in the extended versus standard criteria donor subgroups.

Outcomes	IFLT_ECD (A)	IFLT_SCD (B)	CLT_ECD (C)	CLT_SCD (D)	P Value†			
					A vs. B	A vs. C	A vs. D	C vs. D
EAD	0/12	1/26	16/29	41/101	1.00	0.001	0.004	0.23
Peak AST (U/L)	365 (149-4112)	329 (228-984)	1959 (302-13114)	1325 (149-20583)	0.43	<0.001	<0.001	0.04
Peak ALT (U/L)	259 (66-404)	150 (48-3474)	750 (123-6426)	658 (86-10500)	0.53	<0.001	<0.001	0.19
Peak Tbil (mg/dL)	4.75 (2.68-12.47)	3.67 (1.04-12.82)	9.33 (2.53-51.97)	9.15 (1.50-36.46)	0.55	0.03	0.04	0.40
Tbil on POD 7 (mg/dL)	1.65 (0.77-12.47)	2.68 (0.68-11.87)	7.30 (1.16-51.97)	3.61 (0.56-37.08)	0.47	0.004	0.04	0.16
INR on POD 7	1.09 (0.96-1.33)	1.13 (0.95-1.51)	1.14 (0.90-1.89)	1.09 (0.91-2.28)	0.07	0.12	0.52	0.10

* Data are expressed as n or the median (range). AST, aspartate aminotransferase; ALT, alanine aminotransferase; CLT, conventional liver transplantation; EAD, early allograft dysfunction; ECD, extended criteria donor; IFLT, ischemia-free liver transplantation; INR, international normalized ratio; POD, postoperative day; Tbil, total bilirubin.

† P values were calculated with Fisher's exact test for discrete variables and a 2-tailed Mann-Whitney test for continuous variables.

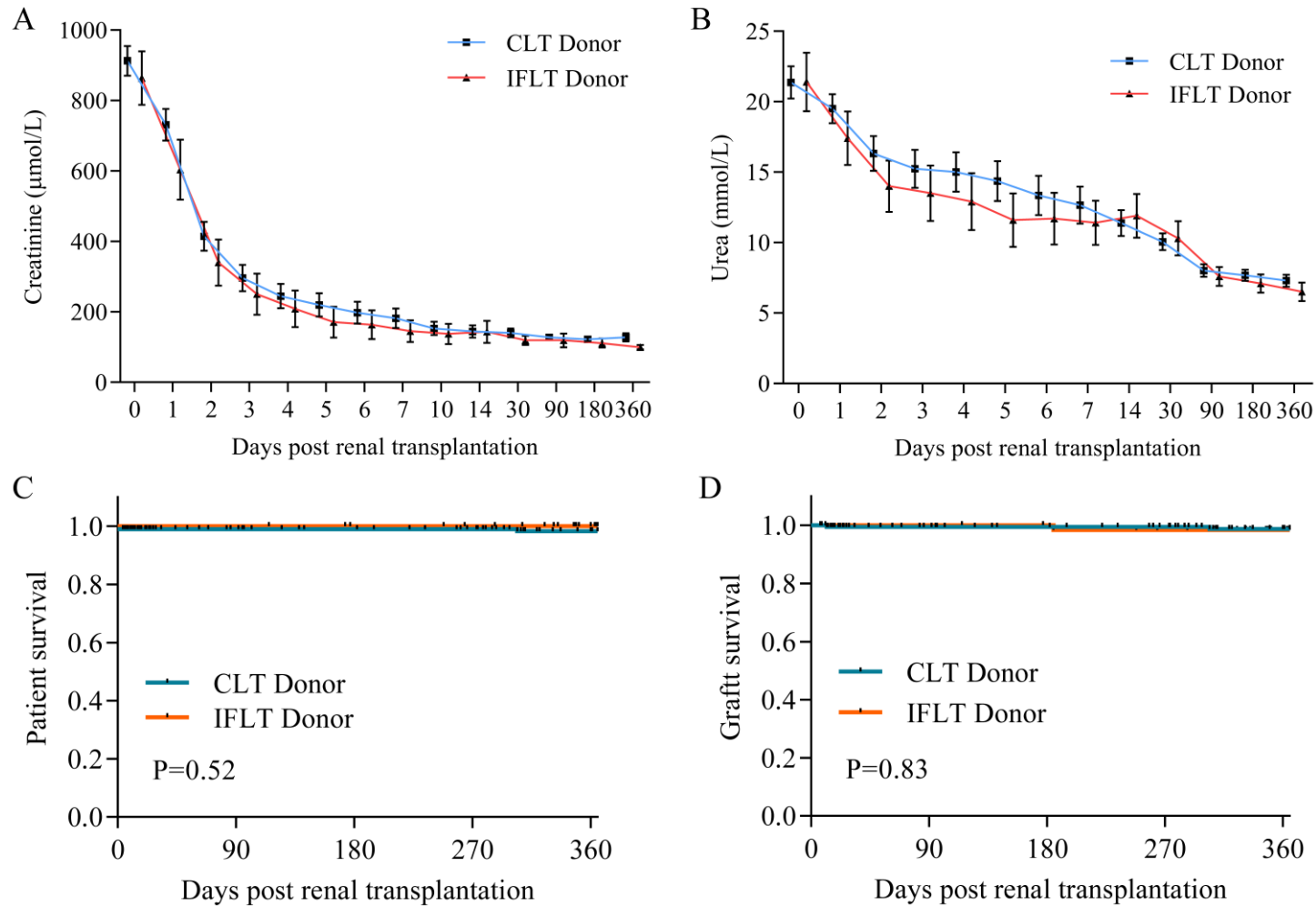


Figure S1. The results of renal function tests and patient/graft survival post renal transplantation in ischemia-free liver transplantation (IFLT) and conventional liver transplantation (CLT) donors. Data on the Figure A and Figure B are presented as mean \pm standard deviation. The levels of creatinine (A) and urea (B) postrenal transplantation in the IFLT and CLT donor groups. P values were calculated with the 2-tailed Student's T-test. There was no statistic difference between the two groups. Kaplan-Meier methods were used to analyze patient (C) and graft (D) survival postrenal transplantation in the IFLT and CLT donor groups. P values were calculated with the log-rank test.

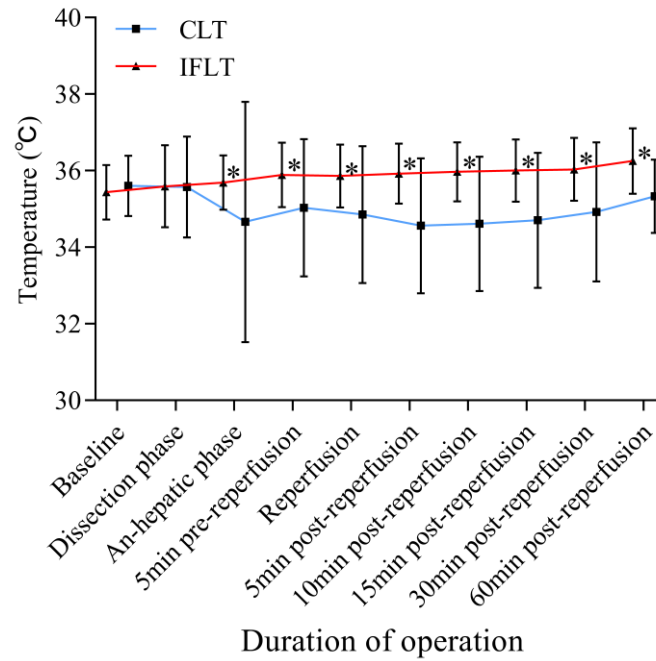


Figure S2. The body temperature of the recipients in the ischemia-free liver transplantation (IFLT) and conventional liver transplantation (CLT) groups. Data on the Figure is presented as mean \pm standard deviation. P value was calculated with the 2-tailed Student's T-test. * Denotes a P value < 0.05.

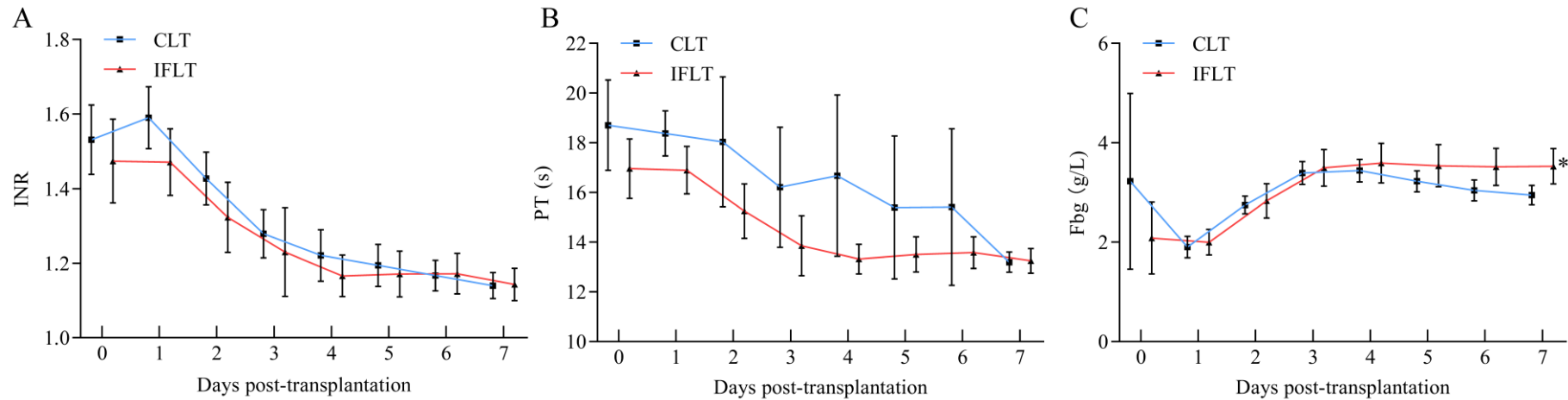


Figure S3. The results of coagulation function tests posttransplantation. Data on the Figures are presented as mean \pm standard deviation. The levels of international normalized ratio (INR) **(A)**, prothrombin time (PT) **(B)** and fibrinogen (Fbg) **(C)** during the early phase posttransplantation. P values were calculated with the 2-tailed Mann-Whitney test. * Denote a P value < 0.05. CLT, conventional liver transplantation; IFLT, ischemia-free liver transplantation.

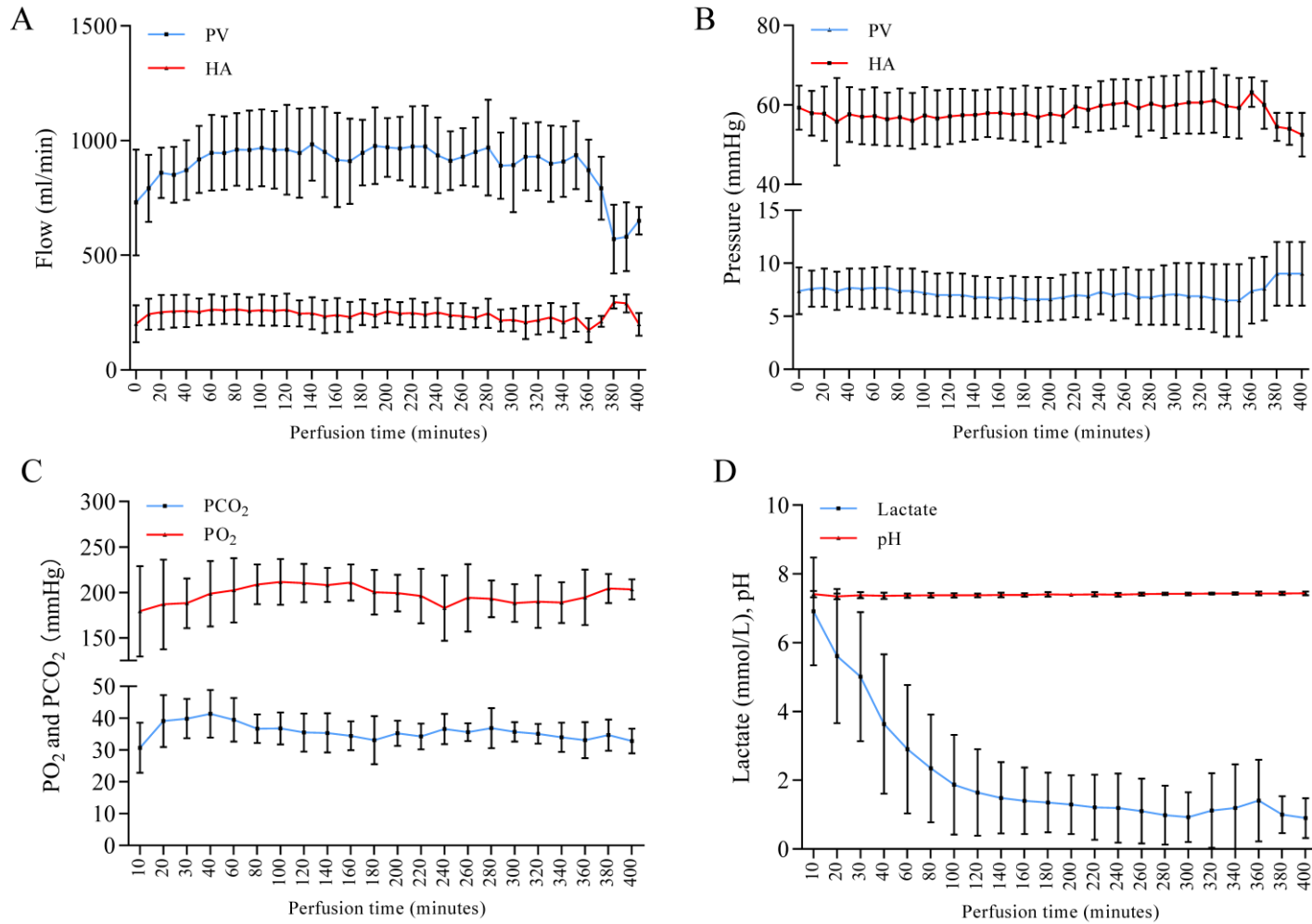


Figure S4. Parameters of machine perfusion during ischemia-free liver transplantation (IFLT). Data on the Figures are presented as mean \pm standard deviation. The pressure (A) and flow (B) of both the portal vein (PV) and hepatic artery (HA) throughout IFLT. The partial pressure of carbon dioxide (pO₂), partial pressure of carbon dioxide (pCO₂) (C), Pondus Hydrogenii (pH) value and lactate (D) levels in the perfusate during IFLT.

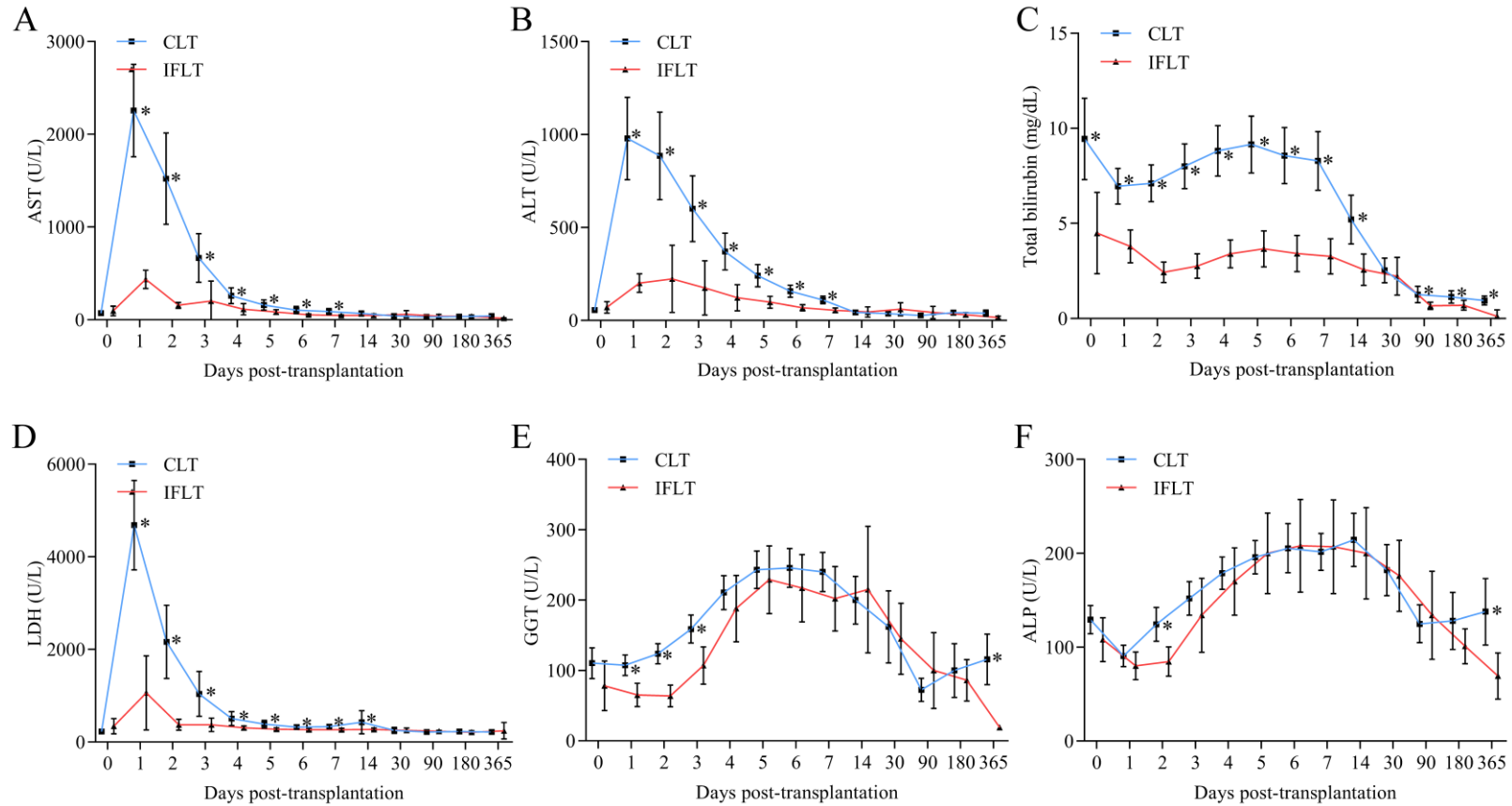


Figure S5. The results of liver function tests posttransplantation between the two groups.

Data on the Figures are presented as mean \pm standard deviation. The cumulative release of aspartate aminotransferase (AST) (A), alanine aminotransferase (ALT) (B), total bilirubin (Tbil) (C), lactate dehydrogenase (LDH) (D), gamma-glutamyl transpeptidase (GGT) (E) and alkaline phosphatase (ALP) (F) within one year posttransplantation between ischemia-free liver transplantation (IFLT) and conventional liver transplantation (CLT). P values were calculated with the 2-tailed Mann-Whitney test. * Denotes a P value < 0.05.

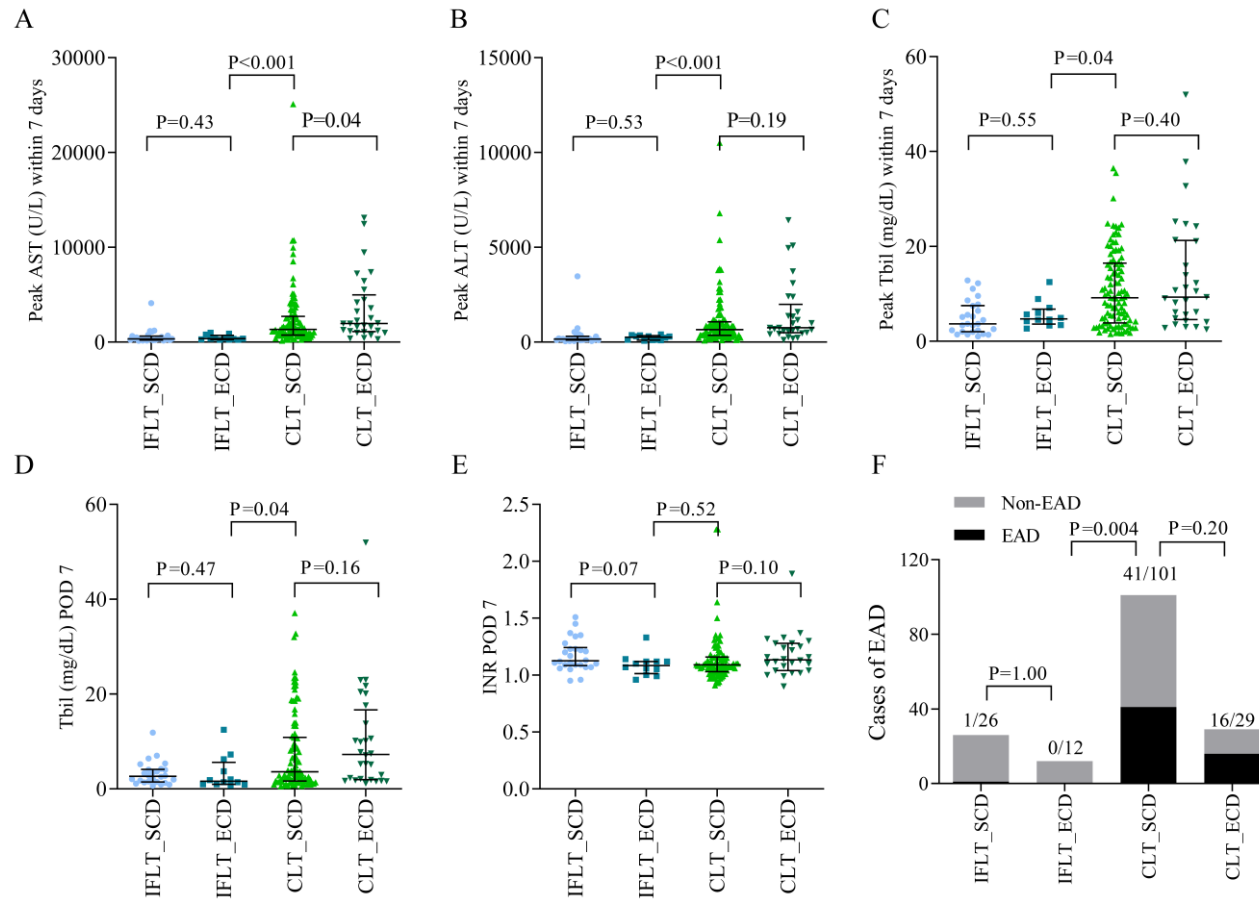


Figure S6. Ischemia-free liver transplantation (IFLT) facilitates successful transplantation of extended criteria donor (ECD) livers. Data on the Figures A to E are presented as mean \pm standard deviation. There were 26, 12, 101 and 29 patients in the IFLT_SCD, IFLT_ECD, CLT_SCD and CLT_ECD subgroups, respectively. The results of posttransplant liver function tests, including aspartate aminotransferase (AST) (A), alanine aminotransferase (ALT) (B), total bilirubin (Tbil) (C & D) and international normalized ratio (INR) (E) in the four subgroups. P values were calculated with the 2-tailed Mann-Whitney test. Data on the Figure F are presented as n. There were 1, 0, 41 and 16 early allograft dysfunction (EAD) patients in the IFLT_SCD, IFLT_ECD, CLT_SCD and CLT_ECD subgroups, respectively. The incidence of EAD in the four subgroups (F). P values were calculated with the Fisher's exact test. CLT, conventional liver transplantation; POD, post operation day; SCD, standard criteria donor.

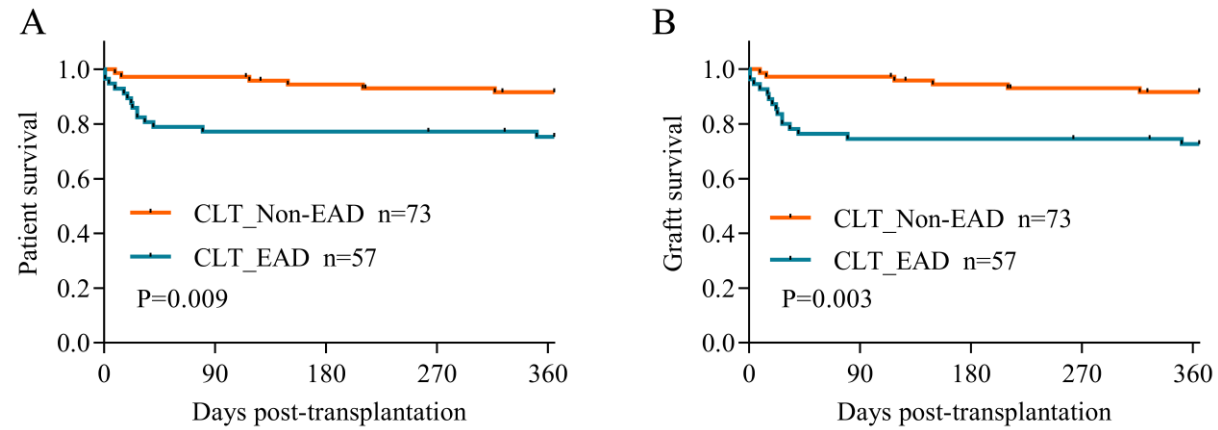


Figure S7. Patient and graft survival in patients with and without early allograft dysfunction (EAD) in the conventional liver transplantation (CLT) group. Kaplan-Meier methods were used to analyze patient (C) and graft (D) survival in the two subgroups. P values were calculated with the log-rank test.