

Supplemental Materials

The immune profile of the fecal microbiome in allogeneic hematopoietic stem cell transplantation



Marcel A. de Leeuw & Manuel X. Duval, GeneCreek

Contents

Supplemental analyses	1
Linear model performance at aGvHD onset	1
GM changes through allo-HSCT	1
In silico screening	2

List of Figures

S1	ROC analysis of the aGvHD onset linear model	1
S2	Strict anaerobe proportion change through allo-HSCT	1
S3	Gram staining balance change through allo-HSCT	2
S4	biological safety level at aGvHD onset	2
S5	Co-exclusion by and co-occurrence with QPS species	3
S6	Co-exclusion and co-occurrence between QPS species	4

List of Tables

Supplemental analyses

Linear model performance at aGvHD onset

The linear model from figure 6 as applied to the originating combined “onset” dataset, can be scored according to a receiver operating characteristic (ROC) model, since the response variable is binary, Fig. S1.

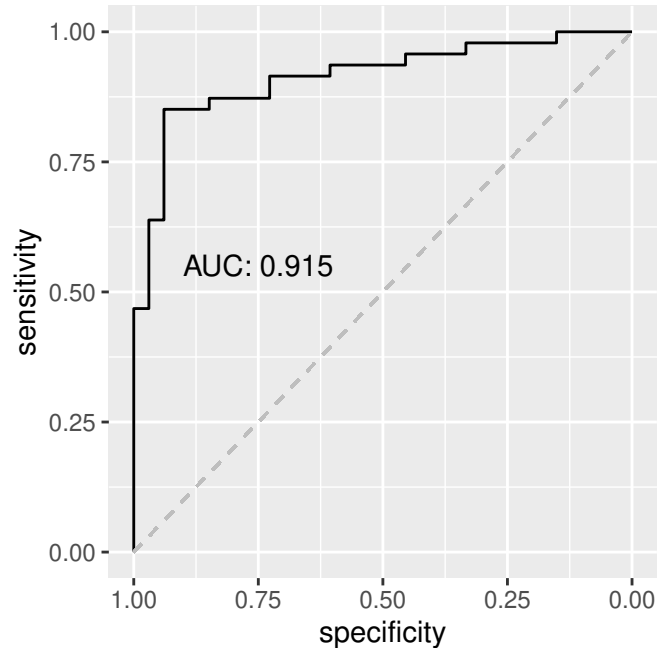


Figure S1: ROC analysis of the aGvHD onset linear model. Combination of datasets, 68 subjects, 80 samples.

GM changes through allo-HSCT

The proportion of strict anaerobes shows a paradoxical evolution across allo-HSCT, with non-aGvHD patients showing the lowest level, Fig S2. One could have expected to find the strongest depletion in aGvHD patients.

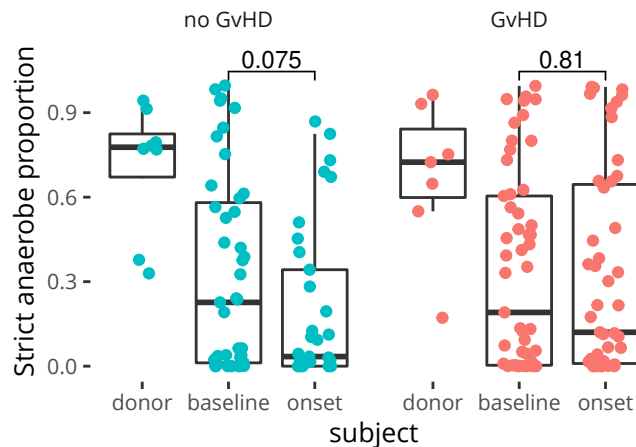


Figure S2: Strict anaerobe proportion change through allo-HSCT. Combination of datasets, 172 subjects, 191 samples. Numbers reflect Wilcoxon signed rank test p-values.

The gram staining balance also evolves through allo-HSCT with a boost of gram positive bacteria which is more tampered in controls at aGvHD onset, fig S3. Thus in controls, the antibiotics regime has eliminated more

anaerobes and gram positive bacteria.

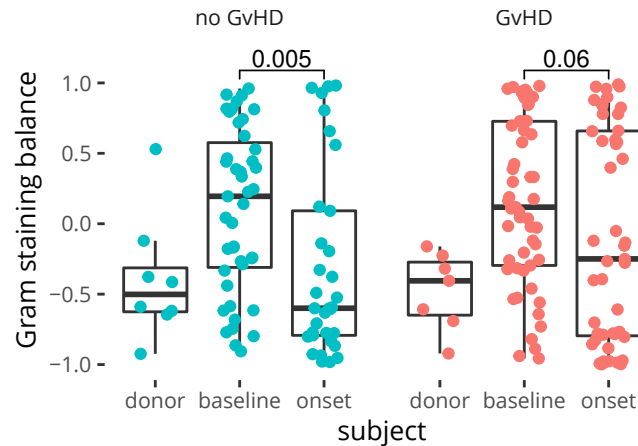


Figure S3: Gram staining balance change through allo-HSCT. Combination of datasets, 172 subjects, 191 samples. Numbers reflect Wilcoxon signed rank test p-values.

Another remarkable feature of the aGvHD control GM is the higher average biological safety level (BSL) which reaches significance at aGvHD onset, Fig. S4. This could be indicative of a different use of oral antibiotics.

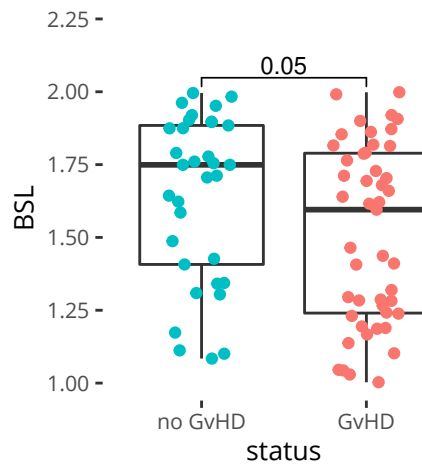


Figure S4: biological safety level at aGvHD onset. Combination of datasets, 68 subjects, 80 samples. Numbers reflect Wilcoxon signed rank test p-values.

In silico screening

To investigate if qualified presumption of safety (QPS), other than *Bifidobacterium longum* are of therapeutic interest, we computed pairwise χ^2 tests for all QPS with mortality and aGvHD case associated species, Fig. 7, main manuscript. Supplemental Fig. S5 provides the same analysis for control associated species and Fig. S6 provides pairwise χ^2 tests results between QPS species, the former to assess respect of control associated species and the

latter to assess compatibility of QPS species for combination therapy.

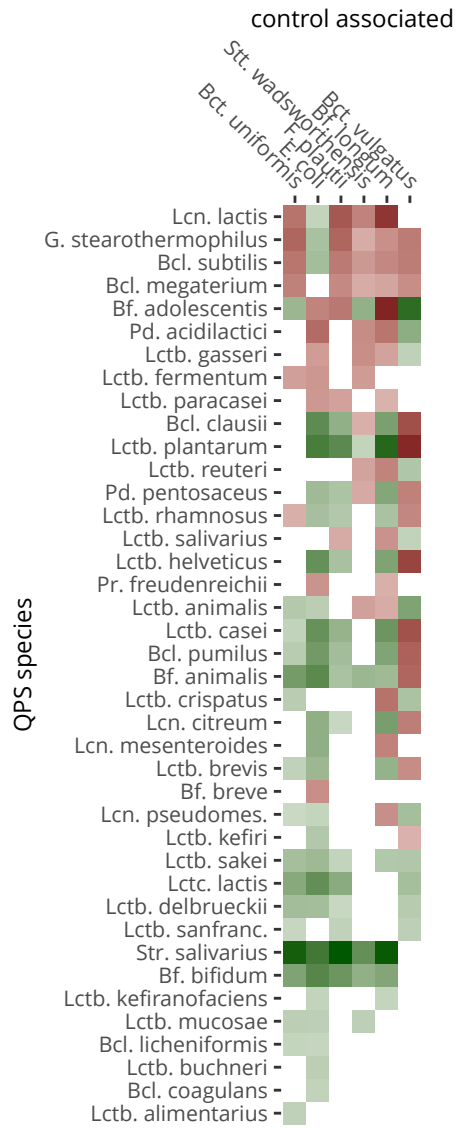


Figure S5: Co-exclusion by and co-occurrence with QPS species. Putative inhibition is in shades of red, potential synergy in shades of green. White reflect neutrality or too little combined prevalence to make a call. Genera are abbreviated as follows: **Bcl.:** *Bacillus*, **Bf.:** *Bifidobacterium*, **Gb.:** *Geobacillus*, **Lcn.:** *Leuconostic*, **Lctb.:** *Lactobacillus*, **Lctc.:** *Lactococcus*, **Pd.:** *Pediococcus*, **S.:** *Streptococcus*.

