

Supplementary Appendix

Table of Contents

Supplementary Information A: Close contact data	1
Table S1.....	2
Movie S1.....	3
Figure S1	3
Figure S2	4
Figure S3	5
Figure S4	6
Figure S5	7

Investigators:

Yuguo Li^{1*}, Ph.D.; Hua Qian², Ph.D.; Jian Hang³, Ph.D.; Xuguang Chen⁴, M.Sc.; Ling Hong³, Ph.D.; Peng Liang⁵, M.Sc.; Jiansen Li⁴, M.Sc.; Shenglan Xiao¹, Ph.D.; Jianjian Wei⁶, Ph.D.; Li Liu⁷, Ph.D.; and Min Kang⁴, M.Sc.

1. Department of Mechanical Engineering, University of Hong Kong, Hong Kong, China
2. School of Energy and Environment, Southeast University, Nanjing, China
3. School of Atmospheric Sciences, Sun Yat-sen University, Guangzhou, China
4. Guangdong Provincial Center for Disease Control and Prevention, Guangzhou, China
5. Guangdong Field Epidemiology Training Program, Ganzi Tibetan Autonomous Prefecture Center for Disease Control and Prevention, Sichuan, China
6. Institute of Refrigeration and Cryogenics and Key Laboratory of Refrigeration and Cryogenic Technology of Zhejiang Province, Zhejiang University, Hangzhou, China
7. School of Architecture, Tsinghua University, Beijing, China

Supplementary Information A: Close contact data

Upon arriving at the restaurant, families A, B, and C took the elevator to the third floor and did not remain in the reception area, as they had previously booked tables. Family A used the elevator in two groups. One patron from T18 shared the lift with the first group. The second comprised the remaining two members of family A alone. Families B and C and patient C1 used the elevator separately.

Shortly after being seated, patient A4 and two unaffected females of family A left their table to use the restroom. During the meal, patient A4 left his/her table two additional times to go to the catering room and to retrieve new chopsticks or a spoon. An unaffected male member of

family C used the restroom shortly after sitting down and overlapped there for 1 min with three members of family A. Some members of the three families used the restroom immediately prior to leaving the restaurant. The sharing of items (e.g., a kettle) was not observed between the three tables and no conversations occurred between the three families. During the meal, patrons at TA were active, with instances of members standing up and talking left and right, whereas patrons at TB and TC were comparatively inactive.

Table S1. Number of cases and susceptible patrons ($n = 89$) at 18 different tables of Restaurant X during lunch on Jan. 24, 2020.

Table number	Number of patrons	Number of infected	Attack rate (%)	Normalized measured concentration	Normalized predicted concentration
TA	10	5	50.00	1.00	1.00
TB	4	3	75.00	0.87	1.04
TC	7	2	28.57	0.98	0.93
T04	0	0	NA	-	1.00
T05	2	0	0.00	-	0.62
T06	4	0	0.00	-	0.47
T07	3	0	0.00	-	0.42
T08	2	0	0.00	-	0.42
T09	10	0	0.00	-	0.32
T10	6	0	0.00	0.55	0.52
T11	7	0	0.00	-	0.57
T12	2	0	0.00	-	0.50
T13	6	0	0.00	-	0.55
T14	3	0	0.00	-	0.63
T15	8	0	0.00	0.58	0.54
T16	5	0	0.00	0.70	0.56
T17	5	0	0.00	0.86	0.75
T18	5	0	0.00	0.73	0.85
Total	89	10	11.24		

Movie 1: Spread of exhaled droplet nuclei in the restaurant as predicted by computational fluid dynamics. The concentration is coloured with red as the highest concentration and blue as the lowest. (see file: Movie mp4- Spread of exhaled droplets in Restaurant X.mp4)

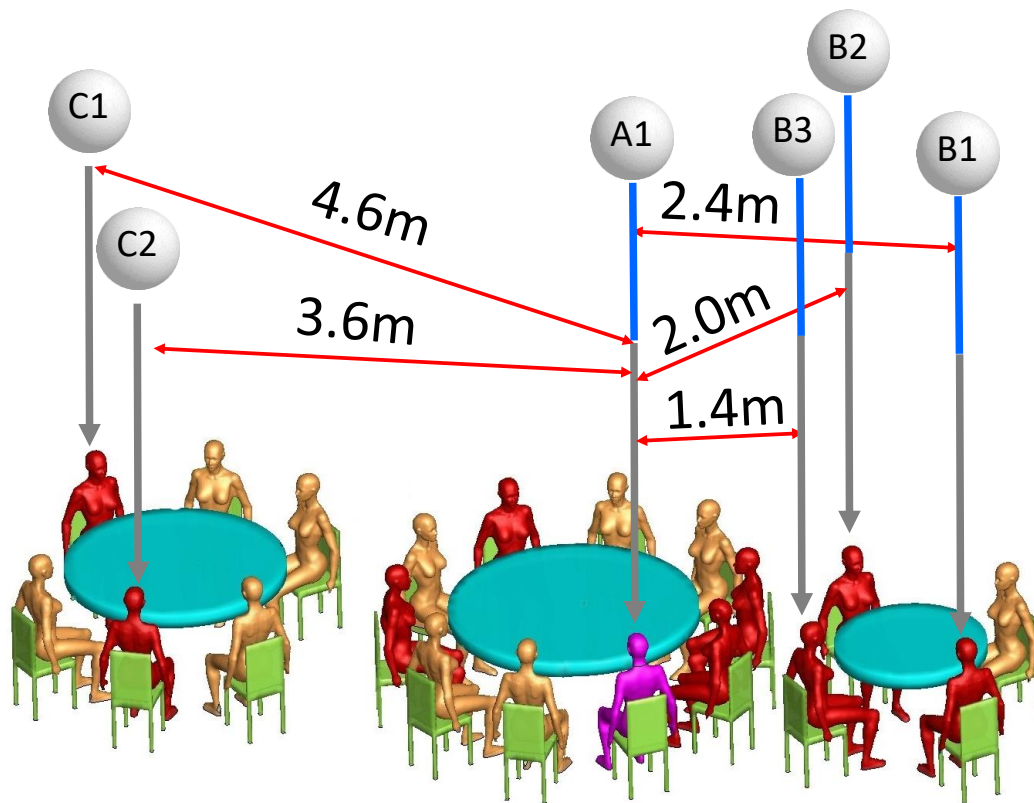


Figure S1. Distances between index patient A1 (magenta) and the five infected individuals of families B and C (red).

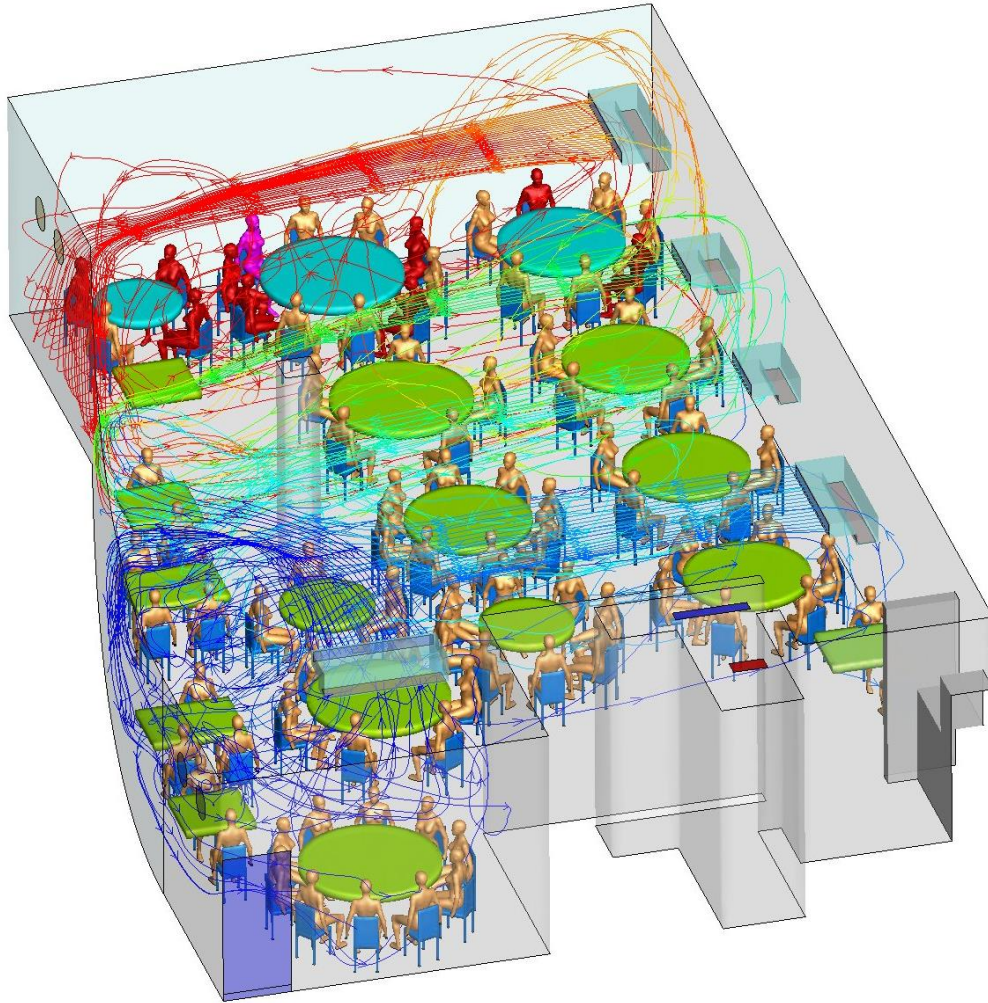


Figure S2. Simulated air streamlines originated from the air conditioning units in the restaurant using computational fluid dynamics. The index patient A1 is shown in magenta, other infected in red and other non-infected in gold color. Only a single human body is used to represent all patrons.

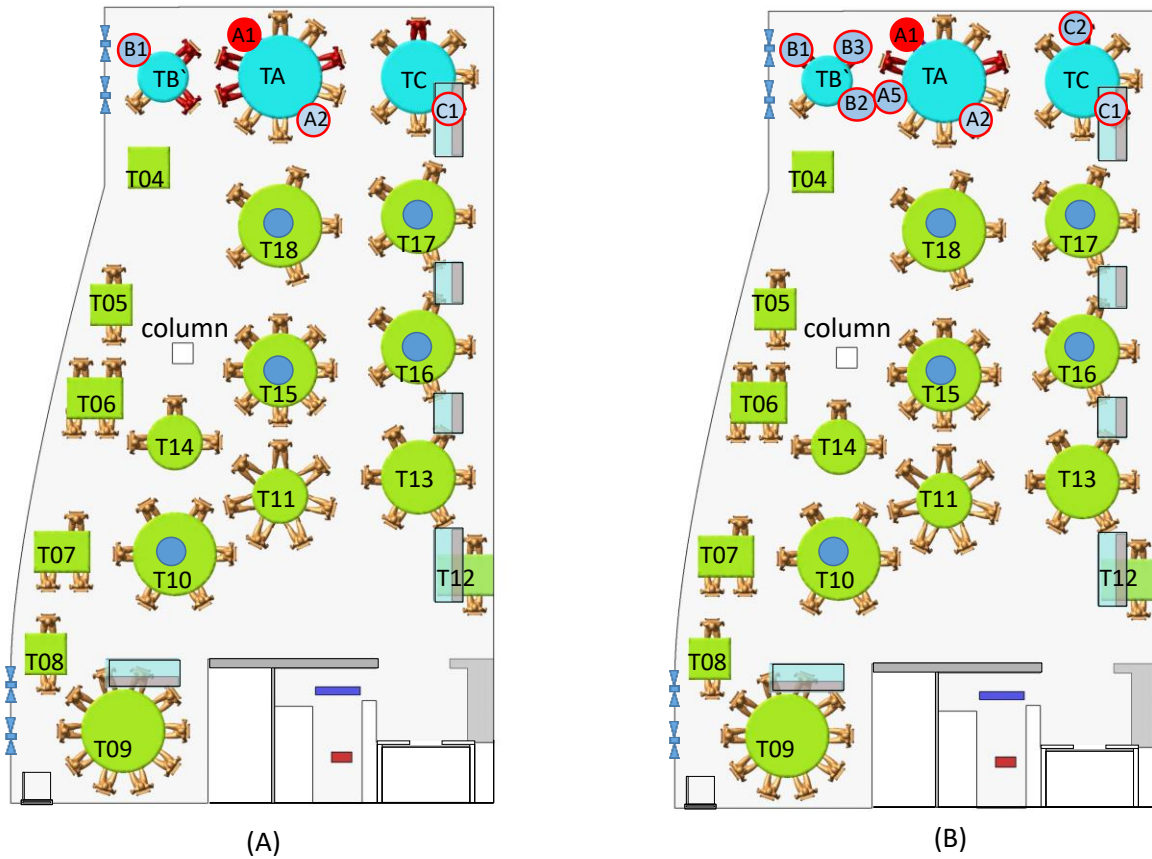
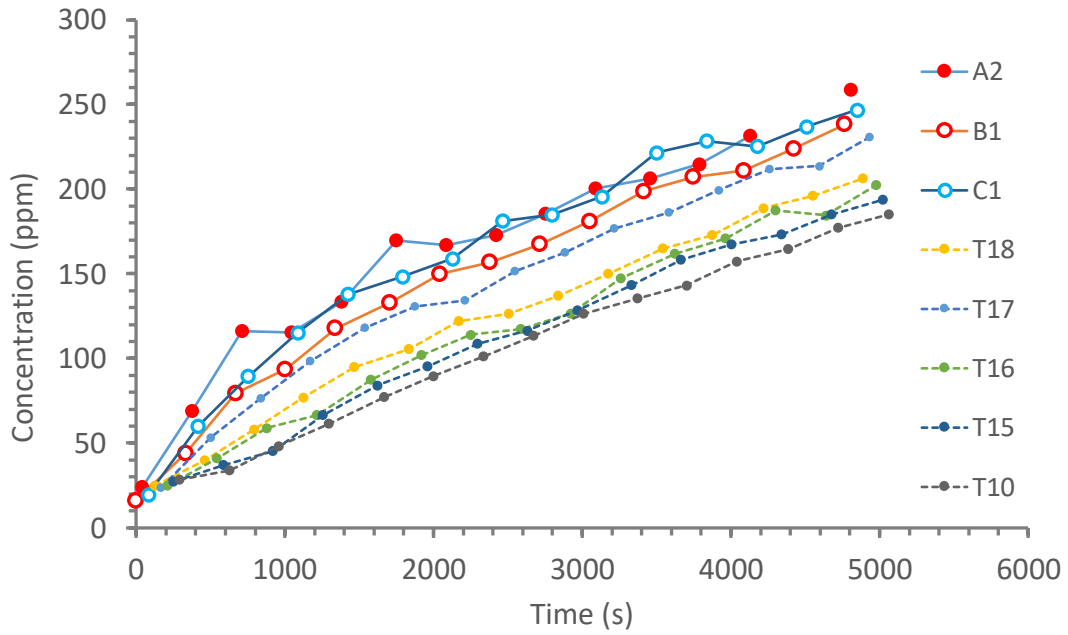
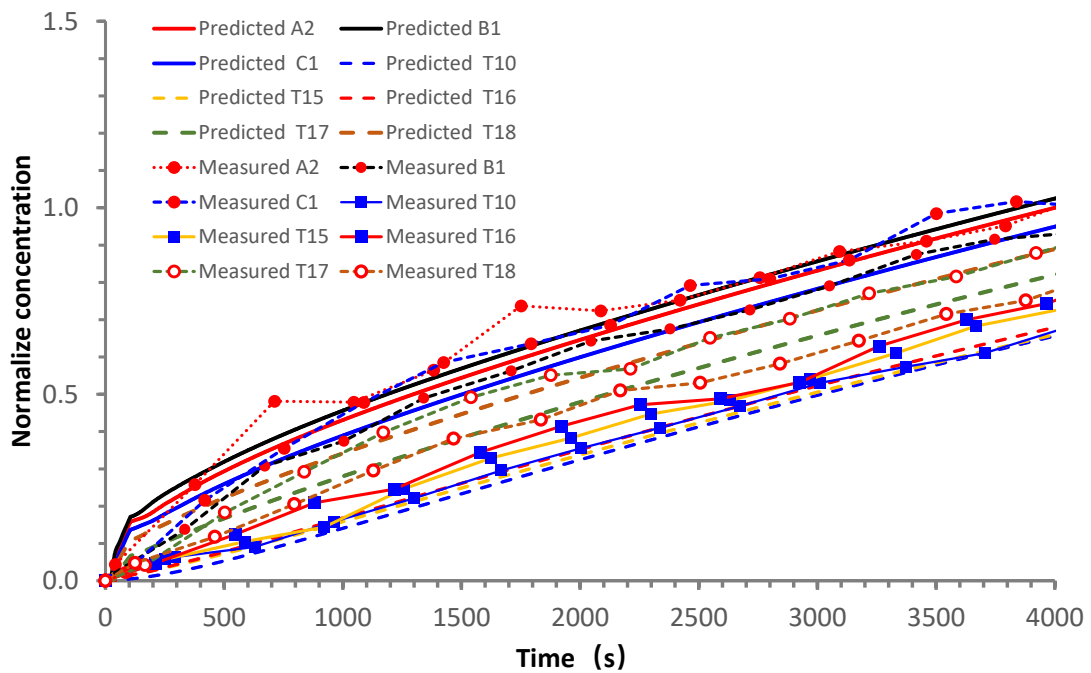


Figure S3. Location of tracer gas (ethane) concentration sensors on the floor plan during the (A) afternoon test and (B) morning test with a “leak”. The red seat indicates the position of index patient A1. Small red-outlined circles indicate the seating location of the infected patrons. Small blue circles indicate the location of the tracer gas sensors. The tables are numbered TA, TB, and TC for families A, B, and C, respectively, and T04–T18 for the other tables. The morning test with a “leak” was unintended; the tracer gas leaked due to a damaged pipe below TA. Nevertheless, the measured data from test (B) also support the observed distribution in test (A).



(A)



(B)

Figure S4. (A) Measured temporal concentration profiles at monitoring points during exhaled tracer spread test (A) in Figure S3. The non-zero concentration at time zero is due to residual gas in the restaurant from previous tests. The results for monitoring points at tables beyond the ABC zone are shown as dashed lines and those in the ABC zone are shown as solid lines. (B)

Comparison between measured and predicted concentrations (all normalized by A2 value at 4000s).

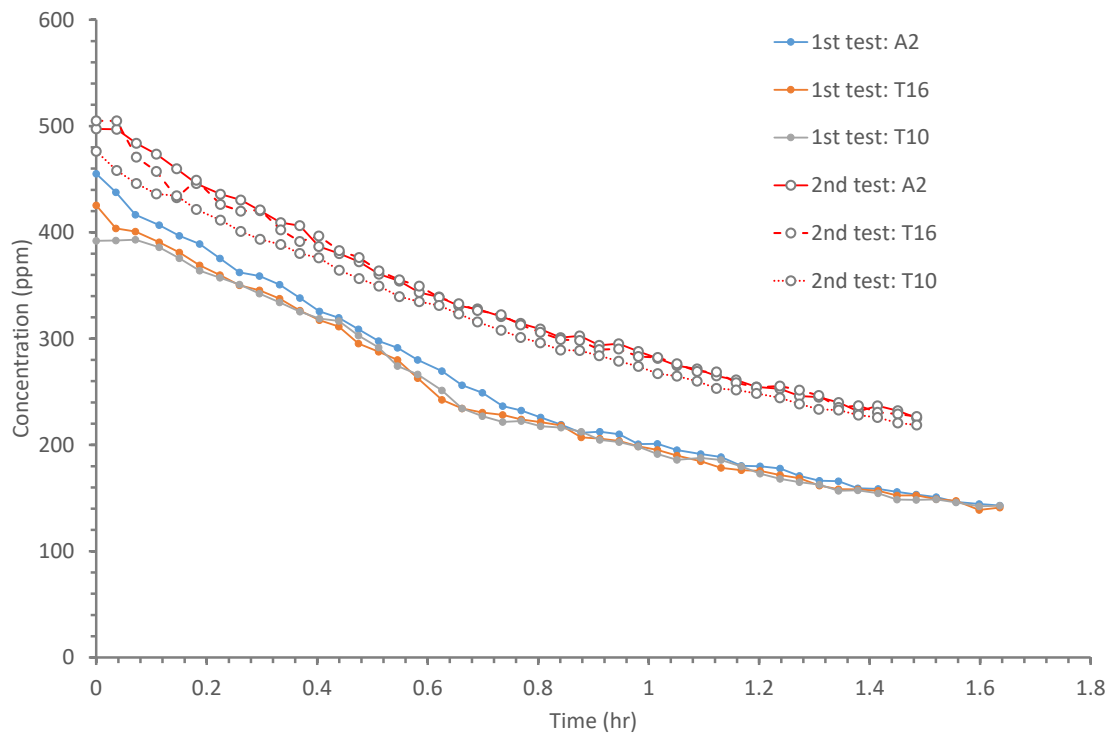


Figure S5. Measured tracer gas concentration profile from two tracer gas decay tests. The concentrations were monitored at three locations during each test: seat A2, Table 10 (T10), and Table 16 (T16).