

Supplementary table 1. Information of the 87 RT-qPCR confirmed COVID-19 patients.

Patients No.	Disease severity	Underlying disease
1	High severe	1, 2, 3
2	High severe	4, 5, 6
3	High severe	7, 4, 8, 9
4	High severe	10, 11
5	High severe	5, 12
6	Severe	4
7	Severe	none
8	Severe	none
9	Severe	4
10	Severe	none
11	Severe	none
12	Severe	4, 13
13	Severe	1
14	Severe	none
15	Severe	none
16	Severe	4, 7, 10, 14, 15
17	Severe	4
18	Severe	4
19	Severe	4, 10, 16
20	Severe	none
21	Severe	none
22	Severe	17
23	Moderate	none
24	Moderate	none
25	Moderate	none
26	Moderate	none
27	Moderate	18
28	Moderate	none
29	Moderate	19, 5
30	Moderate	none
31	Moderate	20, 21, 22
32	Moderate	4, 10, 19
33	Moderate	none
34	Moderate	none
35	Moderate	19
36	Moderate	4
37	Moderate	10, 1, 23
38	Moderate	none
39	Moderate	none
40	Moderate	none
41	Moderate	19, 20

42	Moderate	4
43	Moderate	24
44	Moderate	25
45	Moderate	none
46	Moderate	none
47	Moderate	3, 4, 10, 26
48	Moderate	none
49	Moderate	none
50	Moderate	none
51	Moderate	27
52	Moderate	4, 28
53	Moderate	none
54	Moderate	none
55	Moderate	4, 10, 29
56	Moderate	none
57	Moderate	none
58	Moderate	4,30
59	Moderate	none
60	Moderate	none
61	Moderate	none
62	Moderate	none
63	Moderate	none
64	Moderate	31, 32
65	Moderate	10
66	Moderate	none
67	Moderate	none
68	Moderate	33
69	Moderate	none
70	Moderate	1
71	Moderate	none
72	Moderate	none
73	Moderate	none
74	Moderate	1
75	Moderate	none
76	Moderate	none
77	Moderate	none
78	Moderate	none
79	Mild	none
80	Mild	none
81	Mild	none
82	Mild	none
83	Mild	4,34
84	Mild	4
85	Mild	none

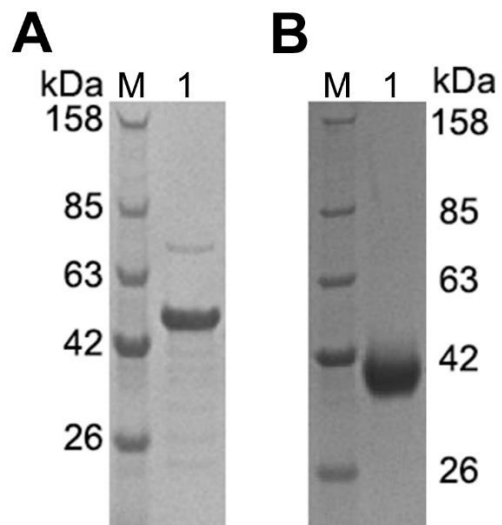
86	Mild	none
87	Mild	none

Underlying illness: 1. Hepatitis B; 2. Postoperative hepatocellular carcinoma; 3. Respiratory failure; 4. Hypertension; 5. Cerebral infarction; 6. Upper gastrointestinal bleeding; 7. Coronary heart disease; 8. Cholecystectomy; 9. Benign prostatic hyperplasia; 10. Diabetes; 11. 1. Hepatitis B; 2. Postoperative hepatocellular carcinoma; 3. Respiratory failure; 4. Hypertension; 5. Cerebral infarction; 6. Upper gastrointestinal bleeding; 7. Coronary heart disease; 8. Cholecystectomy; 9. Benign prostatic hyperplasia; 10. Diabetes; 11. Rheumatoid Arthritis; 12. Hernia surgery; 13. Lower extremity arterial occlusion; 14. Heart valve disease; 15. Atrial fibrillation; 16. Expansion; 17. Car accident caused multiple soft tissue, intracranial hemorrhage, and improved after conservative; 18. Chronic gastritis; 19. Hyperlipidemia 20. Leukopenia; 21. Anemia; 22. Sinus tachycardia; 23. Fatty Liver; 24. Proteinuria; 25. Hyperthyroidism; 26. Hypoproteinemia; 27. Uremia; 28. Left nephrectomy; 29. Breast cancer; 30. Parkinson; 31. Frozen shoulder; 32. Rheumatism; 33. Nasal drip syndrome; 34. Hyperuricemia.

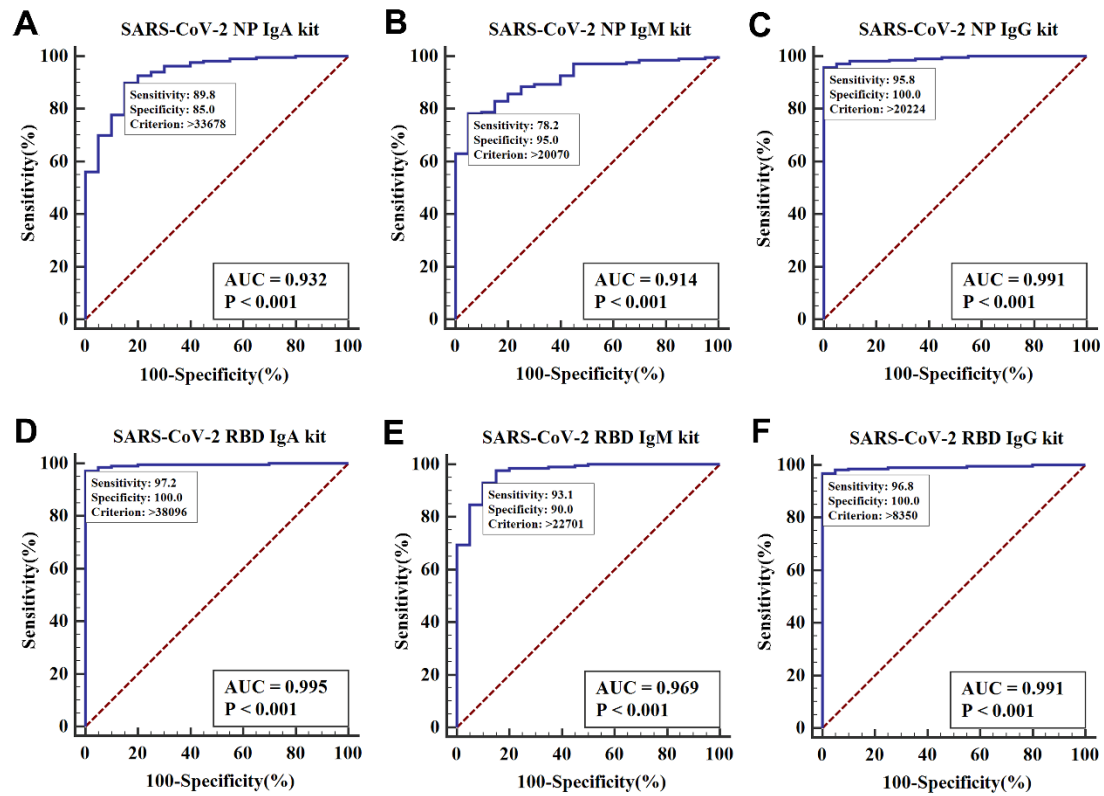
Supplementary table 2. False positive cases diagnosed by the current RBD-based kits.

Kit type	False-positive cases					
	Healthy cases		Interfering cases		Once suspected cases	
	%	n	%	n	%	n
IgA kit	0.61	2/330	4.35	6/138	6.67	1/15
IgM kit	5.45	18/330	9.42	13/138	40.0	6/15
IgG kit	0	0/330	0.73	1/138	0	0/15

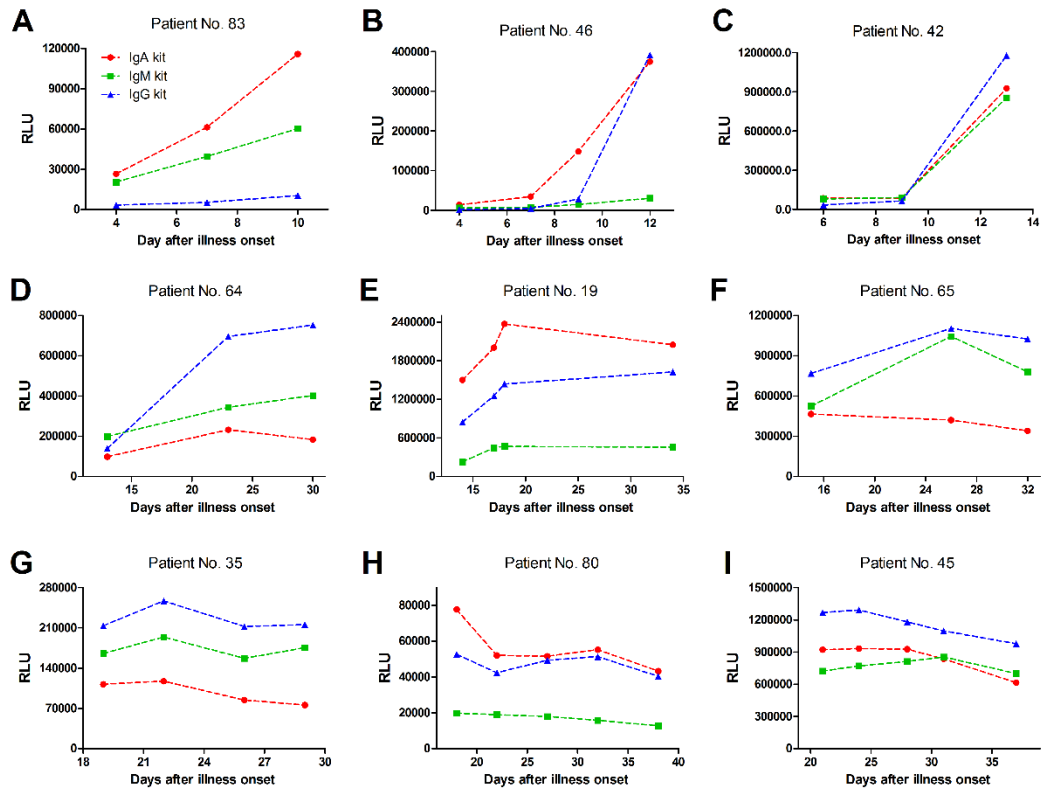
Most of false-positive outcomes in the IgA and IgG tests are from patients who were tested negative for SARS-CoV-2 viral RNA and had other underlying diseases. For example, the four of six “false-positive” samples by the RBD IgA test included two patients who had kidney diseases and high-level self-antibodies, one had liver cirrhosis, and another had breast cancer.



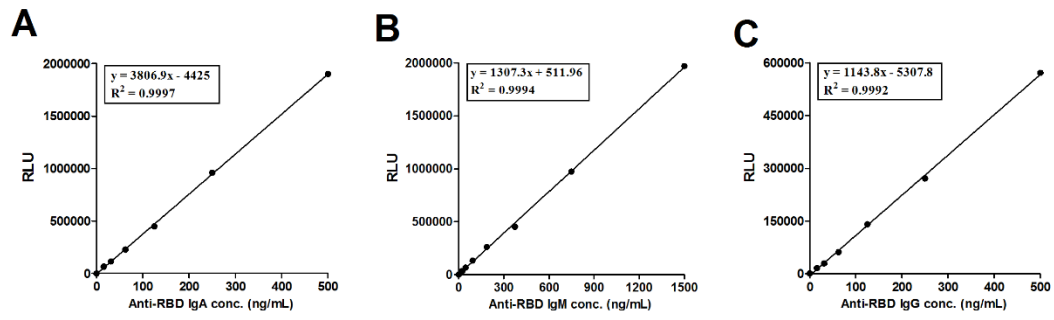
Supplementary figure 1. Purification of recombinant SARS-CoV-2 nucleocapsid protein (NP, A) and receptor-binding domain (RBD, B) of the spike protein. After SDS-PAGE separation based on molecular weight (kDa) together with protein size markers (M), the proteins were stained with Coomassie Blue. A is staining of purified NP (predicted molecular mass of 49.5 kDa). B is staining of purified RBD (predicted molecular mass of 30.3 kDa).



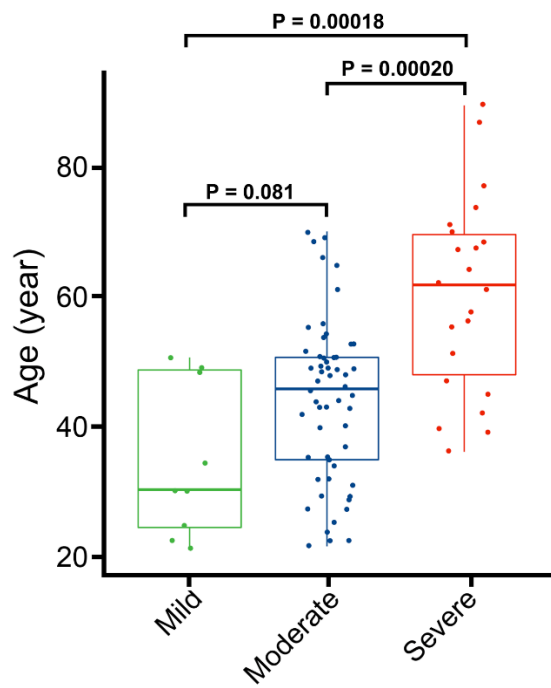
Supplementary figure 2. The receiver operating characteristic (ROC) curve analysis for SARS-CoV-2 diagnosis by NP-specific IgA, IgM, and IgG kit (A, B, and C, respectively), and RBD-specific IgA, IgM, and IgG kit (D, E, and F), respectively. Twenty sera of 20 SARS-CoV-2 negative patients and 216 sera of SARS-CoV-2 infected patients were used. AUC, area under the curve of ROC.



Supplementary figure 3. Representative testing results of sera collected at consecutive time points after illness onset by RBD-based kits (IgA, red; IgM green; and IgG, blue). A-I were testing results of sera from nine individual COVID-19 patients.



Supplementary figure 4. Standard curves for antibody concentration vs. RLU. Standard curves were constructed based on immunoassay of 7-8 concentrations of anti-RBD IgA (A) or IgM (B) or IgG (C) antibodies purified from a serum pool of SARS-CoV-2 infected patients.



Supplementary figure 5. Correlation between patient age and disease severity. Mild: 9; moderate: 56, and severe: 22 patients.