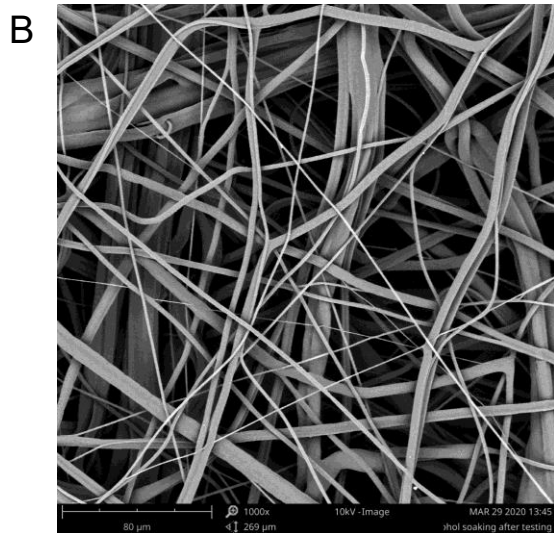
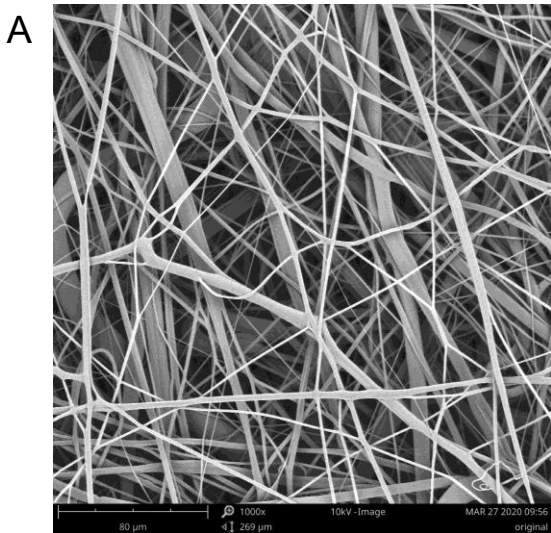
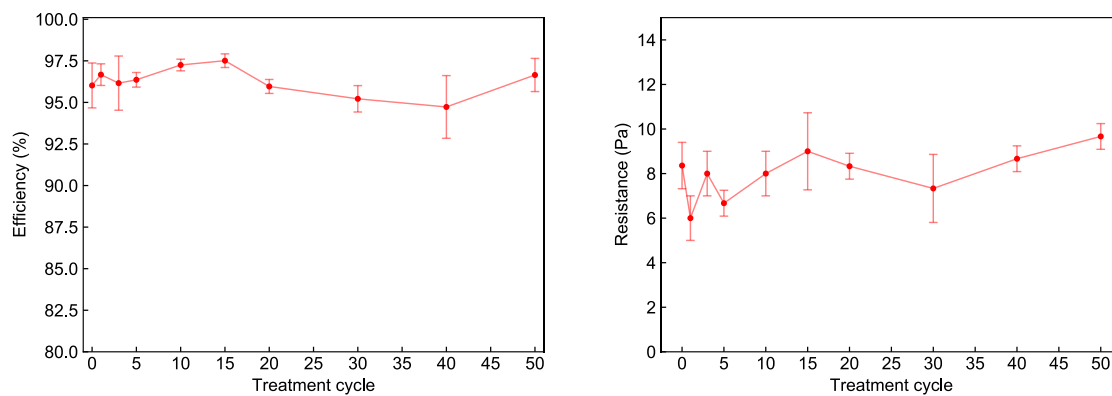


Supplementary Material for:

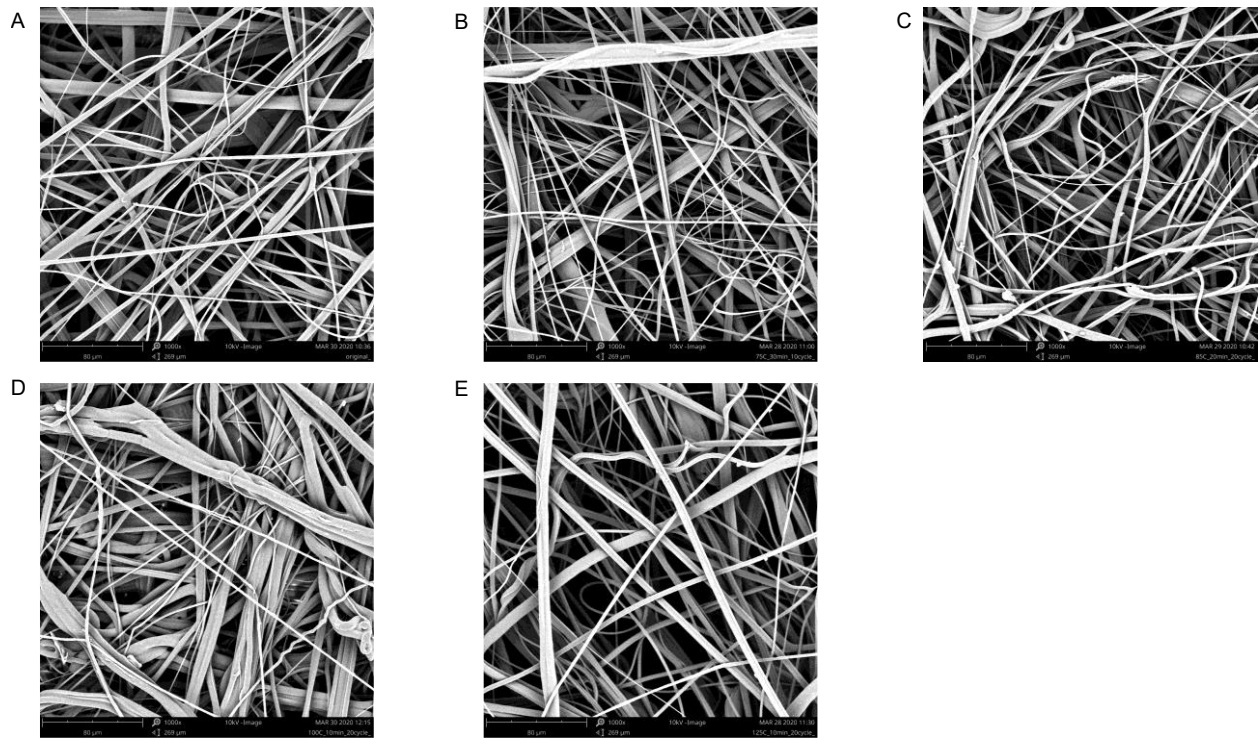
**Can N95 respirators be reused after disinfection? And for how many times?**



**Figure S1. Comparison of fibers before and after alcohol treatment.** A. Before treatment, B. after treatment. No differences in morphology, or damages were observed.



**Figure S2. Dry heat of 75 °C effect on meltblown fabrics.** A. Efficiency, B. Pressure drop. No major changes were observed in the filtration properties of the meltblown fabric after fifty cycles of 75 °C dry heat (30 minutes per cycle).



**Figure S3. SEM images of the meltblown fabric after different temperature treatments.** A. Original conditions. B. 75 °C (30 minutes). C. 85 °C (20 minutes). D. 100 °C (10 minutes). E. 125 °C (10 minutes). No significant changes were found in any of the heated samples compared with the original sample.

**Table S1. Filtration efficiency and pressure drop after ten-cycles of treatment.** We note that steam clearly had degradation in the filtration efficiency.

Treatment	Mode of application	Treatment time (min/cycle)	Filtration efficiency (%)	Pressure drop (Pa)
Initial samples			96.52 ± 1.37	8.7 ± 1.0
Dry heat (75 °C)	Static-air oven	30	97.25 ± 0.34	8.0 ± 1.0
Steam	Beaker of boiling water	10	80.65 ± 2.97	8.3 ± 1.2
UVGI (254 nm, 8 W)	Sterilization cabinet	30	96.78 ± 0.80	9.0 ± 1.7

**Table S2. Evolution of filtration efficiency based on steam treatment in a meltblown.** We see that after cycle 5 the efficiency has a significant drop.

Cycle	Efficiency (%)	Pressure drop (Pa)
Initial	$96.52 \pm 1.37$	$8.7 \pm 1.0$
Steam (10 min/cycle)		
1	$97.97 \pm 0.41$	$10.0 \pm 0.0$
3	$96.41 \pm 1.07$	$9.0 \pm 1.0$
5	$85.04 \pm 1.05$	$7.3 \pm 1.2$
10	$80.65 \pm 2.97$	$8.3 \pm 1.2$

**Table S3. Evolution of filtration efficiency with various temperatures in environmental chamber SH-642.** The humidity was set to the minimum set point, 30% RH at 85 °C. Above 85 °C the humidity cannot be well-controlled and will be <30% RH.

Cycle	Efficiency (%)	Pressure Drop (Pa)
Initial	96.02 ± 1.35	8.3 ± 1.0
75 °C (30 minutes/cycle)		
1	95.35 ± 0.96	8.0 ± 1.0
3	94.99 ± 0.79	7.6 ± 0.5
5	95.25 ± 0.77	7.3 ± 1.1
10	95.94 ± 1.84	8.6 ± 0.5
15	94.44 ± 0.37	7.0 ± 1.0
20	96.49 ± 0.59	6.6 ± 0.5
85 °C (20 minutes/cycle)		
1	95.96 ± 0.36	7.6 ± 0.5
3	96.81 ± 0.85	7.6 ± 1.5
5	95.56 ± 1.16	8.0 ± 1.7
10	95.40 ± 0.27	7.6 ± 0.5
15	96.07 ± 0.21	8.0 ± 1.7
20	96.79 ± 0.18	9.0 ± 0.0
100 °C (10 minutes/cycle)		
1	94.71 ± 0.72	7.3 ± 0.5
3	94.79 ± 0.30	8.0 ± 0.0
5	94.58 ± 0.78	9.0 ± 1.0
10	94.11 ± 1.37	8.6 ± 1.1
15	95.95 ± 0.91	10.0 ± 1.0
20	95.03 ± 1.31	9.6 ± 0.5
125 °C (10 minutes/cycle)		
1	96.23 ± 0.65	9.6 ± 1.1
3	93.98 ± 0.38	9.6 ± 1.5
5	91.08 ± 1.64	7.6 ± 0.5
10	90.68 ± 1.01	8.3 ± 1.1
15	90.94 ± 1.04	8.0 ± 1.7
20	91.27 ± 1.62	8.0 ± 1.7