

1 **Transmission potential of COVID-19 in Iran**

2 **Technical Appendix**

3
4 Authors: Kamalich Muniz-Rodriguez¹, MPH, Isaac Chun-Hai Fung^{1*}, PhD, Shayesteh R. Ferdosi, PhD,
5 Sylvia K. Ofori, MPH, Yiseul Lee, MPH, Amna Tariq, MPH, Gerardo Chowell*, PhD

6 Affiliations: Jiann-Ping Hsu College of Public Health, Georgia Southern University (I. C.-H. Fung, K.
7 Muniz-Rodriguez, S. K. Ofori), Brain Tumor Unit, The Translational Genomics Research Institute (S. R.
8 Ferdosi), School of Public Health, Georgia State University (Y. Lee, A. Tariq, G. Chowell)

9 ¹ These two individuals serve as co-first authors.

10 Correspondence should be addressed to: I. C. H. Fung, Department of Biostatistics, Epidemiology and
11 Environmental Health Sciences, Jiann-Ping Hsu College of Public Health, Georgia Southern University.
12 Telephone: 912-478-5079. Email: cfung@georgiasouthern.edu; G. Chowell, Department of Population
13 Health Sciences, School of Public Health, Georgia State University. Telephone: 404-413-9322. Fax: 404-
14 413-2344. Email: gchowell@gsu.edu.

17 **Technical Appendix**

18 **Estimate of reproduction number from daily reported cases (Method 1)**

19 Using the daily curve of reported cases in Iran, we estimate the reproduction number of COVID-19 (Table
20 S2, Figure S1). For this purpose, we first characterize the daily reported incidence using the generalized
21 growth model (GGM) (1). This model characterizes the growth profile via two parameters: the growth rate
22 parameter (r) and the scaling of the growth rate parameter (p). The model captures diverse epidemic profiles
23 ranging from constant incidence ($p = 0$), sub-exponential or polynomial growth ($0 < p < 1$), and
24 exponential growth ($p = 1$) (1). The serial interval is assumed to follow a gamma distribution with a mean
25 of 4.41 days and a standard deviation of 3.17 days based on recent reports (2, 3).

26 Next, to estimate the most recent estimate of R_t , we simulate the progression of incident reported cases from
27 the calibrated GGM, and apply the discretized probability distribution (ρ_i) of the serial interval using the
28 renewal equation (4-6) given by

$$29 \quad R_{t_i} = \frac{I_i}{\sum_{j=0}^i (t_i - j) \rho_i}.$$

30 In the renewal equation we denote the total incidence at calendar time t_i by I_i . Here, the denominator
31 represents the total number of cases that contribute to the incidence cases at time t_i . Next, we estimate
32 R_t from 300 simulated curves assuming a Poisson error structure to derive the uncertainty bounds around
33 our estimate of the reproduction number (7) (Table S4).

34 **Estimate of reproduction number from epidemic doubling times (Method 2)**

35 We ran simulation to generate 10,000 sets of estimates of epidemic doubling times for a given time series
36 of cumulative number of reported cases (Table S3), and to compute the arithmetic mean of each set. Then,
37 the harmonic mean of these estimates was calculated across 10,000 sets of simulations and was reported as
38 our estimated epidemic doubling time, with 95% confidence interval (Table S5).

39 Next, we drew 10,000 random values for the serial interval from a gamma distribution with a mean of 4.41

40 days and a standard deviation of 3.17 days (2, 3). We generate 10,000 values for the reproduction number
41 by calculating the reproduction number for each pair of values (arithmetic mean of epidemic doubling time
42 and serial interval respectively) following the equation as in Vynnycky and White (8), Table 4.1, Equation
43 4.14:

$$44 \quad \text{Reproduction number} = 1 + \text{growth rate} \times \text{serial interval}$$

45 We reported the mean and 95% confidence intervals (CI) of the 10,000 estimated values of the reproduction
46 number (Table S5).

47 **Results for Regions of Iran**

48 Iran is geographically arranged into five regions, each of which contains a number of provinces (see Table
49 S1). In addition to estimating the reproduction number of COVID-19 across Iran, we further analyzed the
50 data for each of the five regions of Iran.

51 Tables S4 and S5, and Figures S2 to S8, present our estimates for Regions 1 to 5 using Methods 1 and 2.
52 The estimates obtained from Method 1 had a smaller variance. The estimates obtained from Method 2 had
53 a larger variance, given the large variance of the serial interval estimate that we used. Given that the 95%
54 CIs of our reproduction number estimates obtained via Method 2 were large, they overlapped with those
55 obtained via Method 1.

56 From February 19 through March 1, it appeared that whether it was for Iran as a whole, or for its five
57 regions, the point estimate of the estimated basic reproduction number for each region was 2.0 or higher
58 before the effect of social distancing interventions kicked in. From March 6 through 19, the effective
59 reproduction number for each region had dropped to a range from 1.48 of Region 3 to 1.77 of Region 5.
60 However, the 95% CI of each region's estimate does not overlap with 1. Therefore, the transmission of
61 SARS-CoV-2 (that causes COVID-19) remains active in all 5 regions of Iran (as effective reproduction
62 number >1) before the Persian New Year Day of March 20, 2020.

63 **This study in the context of recent pre-print literature on the 2020 COVID-19 epidemic in Iran**

64 On April 2, 2020, we searched for “COVID-19” and “Iran” on medRXiv pre-print servers and identified 6
65 manuscripts that fit mathematical or statistical models to COVID-19 case count data obtained via official
66 Iranian reports. See Table S6 for a summary. Three of these papers provide reproduction number estimates
67 (9-11). Our estimates of the basic reproduction number are comparable to theirs. These three papers also
68 identified a lower effective reproduction number for the Iranian epidemic once social distancing
69 interventions kicked in. However, only one paper suggested that the effective reproduction number has
70 dropped below unity by March 20, 2020 (10). The other two estimated an effective reproduction number
71 >1 (9, 11), that is consistent with our results.

72 **References**

- 73 1. Viboud C, Simonsen L, Chowell G. A generalized-growth model to characterize the early ascending
74 phase of infectious disease outbreaks. *Epidemics*. 2016 2016/06/01/;15:27-37.
- 75 2. Nishiura H, Linton NM, Akhmetzhanov AR. Serial interval of novel coronavirus (2019-nCoV)
76 infections. *medRxiv*. 2020:2020.02.03.20019497.
- 77 3. You C, Deng Y, Hu W, Sun J, Lin Q, Zhou F, et al. Estimation of the Time-Varying Reproduction
78 Number of COVID-19 Outbreak in China. *medRxiv*. 2020:2020.02.08.20021253.
- 79 4. Nishiura H, Chowell G. Early transmission dynamics of Ebola virus disease (EVD), West Africa,
80 March to August 2014. *Euro Surveill*. 2014 Sep 11;19(36).
- 81 5. H. Nishiura GC. The Effective Reproduction Number as a Prelude to Statistical Estimation of Time-
82 Dependent Epidemic Trends; 2009.
- 83 6. Paine S, Mercer GN, Kelly PM, Bandaranayake D, Baker MG, Huang QS, et al. Transmissibility
84 of 2009 pandemic influenza A(H1N1) in New Zealand: effective reproduction number and influence of age,
85 ethnicity and importations. *Euro Surveill*. 2010 Jun 17;15(24).
- 86 7. Chowell G. Fitting dynamic models to epidemic outbreaks with quantified uncertainty: A primer
87 for parameter uncertainty, identifiability, and forecasts. *Infectious Disease Modelling*. 2017;2(3):379-98.
- 88 8. Vynnycky E, White RG. *An Introduction to Infectious Disease Modelling*. Oxford: Oxford
89 University Press; 2010.
- 90 9. Ahmadi A, Fadaei Y, Shirani M, Rahmani F. Modeling and Forecasting Trend of COVID-19
91 Epidemic in Iran. *medRxiv*. 2020:2020.03.17.20037671.
- 92 10. Ghaffarzadegan N, Rahmandad H. Simulation-based Estimation of the Spread of COVID-19 in
93 Iran. *medRXiv*. 2020:2020.03.22.20040956.
- 94 11. Sahafizadeh E, Sartoli S. Estimating the reproduction number of COVID-19 in Iran using epidemic
95 modeling. *medRXiv*. 2020:2020.03.20.20038422.
- 96 12. Zahiri A, RafieeNasab S, Roohi E. Prediction of Peak and Termination of Novel Coronavirus
97 Covid-19 Epidemic in Iran. *medRXiv*. 2020:2020.03.29.20046532.
- 98 13. Zareie B, Roshani A, Mansournia MA, Rasouli MA, Moradi G. A model for COVID-19 prediction
99 in Iran based on China parameters. *medRXiv*. 2020:2020.03.19.20038950.
- 100 14. Zhan C, Tse CK, Lai Z, Hao T, Su J. Prediction of COVID-19 Spreading Profiles in South Korea,
101 Italy and Iran by Data-Driven Coding. *medRXiv*. 2020:2020.03.08.20032847.

102

Table S1. Regions and provinces of Iran.

Region	Provinces
1	Qom Province (QOM), Tehran Province (TEH), Mazandaran Province (MAZ), Alborz Province (ALB), Semnan Province (SEM), Golestan Province (GOL), Qazvin Province (QAZ).
2	Esfahan (ESF), Fars (FRS), Hormozgan (HOR), Kohgiluyeh and Boyer-Ahmad (KOH), Chaharmahal and Bakhtiari (CHA), and Bushehr (BUS).
3	Gilan Province (GIL), Ardabil Province (ARD), East Azerbaijan Province (AZS), West Azerbaijan Province (AZG), Kurdistan (or Kordestan) Province (KUR).
4	Markazi (MAR), Hamedan (HAM), Khazistan (KHZ), Kermanshah (KRS), Lorestan (LOR), and Ilam (ILM).
5	Razavi Khorasan (KHR), Sistan and Baluchestan (SIS), Yazd (YAZ), South Khorasan (KHS), Kerman (KER), and North Khorasan (KHN).

Table S2. Daily number of new reported COVID-19 cases in Iran and its five regions.

Date (yyyy-mm-dd)	Iran	Region 1	Region 2	Region 3	Region 4	Region 5
2020-02-19	2	2	-	-	-	-
2020-02-20	3	2	-	-	1	-
2020-02-21	13	11	-	2	-	-
2020-02-22	10	10	-	-	-	-
2020-02-23	15	12	-	2	1	-
2020-02-24	18	11	2	2	3	-
2020-02-25	34	29	2	2	0	1
2020-02-26	44	21	5	10	6	2
2020-02-27	106	58	8	32	6	2
2020-02-28	143	98	10	32	3	0
2020-02-29	205	125	20	31	23	6
2020-03-01	385	245	23	28	67	22
2020-03-02	523	422.1805†	20.9259†	30.8184†	42.1267†	11.1281†
2020-03-03	835	528.6418†	17.0741†	39.4146†	59.4522†	16.0099†
2020-03-04	586	424	15	54	62	31
2020-03-05	591‡	256	150	122	49	69
2020-03-06	1234	693	180	175	112	74
2020-03-07	1076	663	126	99	82	106
2020-03-08	743	378	104	68	140	53
2020-03-09	595	265	89	119	92	30
2020-03-10	881	508	72	63	138	100
2020-03-11	958	485	200	90	78	105
2020-03-12	1075	605	62	150	183	75
2020-03-13	1289	614	147	237	121	170
2020-03-14	1365	624	173	272	186	110
2020-03-15	1209	562	149	156	126	216
2020-03-16	1053	480	189	160	97	127

2020-03-17	1178	566	118	203	134	157
2020-03-18	1192	505	255	199	120	113
2020-03-19	1046	359	160	210	140	177

†The daily new cases for each of the 5 regions on March 2 and 3, 2020, were interpolated using cubic spline.

‡The reported number of the national total on March 5 does not match the sum of the 5 regions.

Table S3. Daily cumulative number of daily reported COVID-19 cases in Iran.

Date (yyyy-mm-dd)	Iran	Region 1	Region 2	Region 3	Region 4	Region 5
2020-02-19	2	2	-	-	-	-
2020-02-20	5	4	-	-	1	-
2020-02-21	18	15	-	2	1	-
2020-02-22	28	25	-	2	1	-
2020-02-23	43	37	-	4	2	-
2020-02-24	61	48	2	6	5	-
2020-02-25	95	77	4	8	5	1
2020-02-26	139	98	9	18	11	3
2020-02-27	245	156	17	50	17	5
2020-02-28	388	254	27	82	20	5
2020-02-29	593	379	47	113	43	11
2020-03-01	978	624	70	141	110	33
2020-03-02	1501	NR	NR	NR	NR	NR
2020-03-03	2336	NR	NR	NR	NR	NR
2020-03-04	2922	1984	183	345	273	82
2020-03-05	3513	2240	333	467	322	151
2020-03-06	4747	2933	513	642	434	225
2020-03-07	5823	3596	639	741	516	331
2020-03-08	6566	3974	743	809	656	384
2020-03-09	7161	4239	832	928	748	414
2020-03-10	8042	4747	904	991	886	514
2020-03-11	9000	5232	1104	1081	964	619
2020-03-12	10075	5837	1166	1231	1147	694
2020-03-13	11364	6451	1313	1468	1268	864
2020-03-14	12729	7075	1486	1740	1454	974
2020-03-15	13938	7637	1635	1896	1580	1190
2020-03-16	14991	8117	1824	2056	1677	1317

2020-03-17	16169	8683	1942	2259	1811	1474
2020-03-18	17361	9188	2197	2458	1931	1587
2020-03-19	18407	9547	2357	2668	2071	1764

NR: Not reported by the Iranian Government.

Table S4. Method 1 (February 19 through March 1, 2020): Estimated epidemic growth rate (95% Confidence intervals, CI), scaling parameter (95% CI) and basic reproduction number obtained via a generalized growth model.

	Epidemic growth rate (r, 95% CI)	Scaling parameter, p	Basic reproduction number (95% CI)
Iran	0.65 (0.56, 0.75)	0.96 (0.93, 1)	4.4 (3.9, 4.9)
Region 1	0.55 (0.51, 0.65)	0.99 (0.94, 1)	4.3 (3.8, 4.6)
Region 2	1.20 (0.58, 2.20)	0.76 (0.52, 1)	3.4 (2.3, 5.0)
Region 3	3.00 (1.50, 5.00)	0.52 (0.37, 0.69)	2.1 (1.7, 2.7)
Region 4	0.75 (0.67, 0.96)	0.97 (0.87, 1)	5.8 (4.4, 6.4)
Region 5	0.83 (0.68, 1.30)	0.94 (0.72, 1)	6.0 (3.8, 7.3)

Table S5. Method 2 (February 19 through March 1, and March 6 through 19, 2020): Estimated epidemic doubling time (95% Confidence intervals, CI), epidemic growth rate (95% CI) and the basic (or effective) reproduction number (95% CI) obtained via Method 2. Epidemic growth rate (r) = $\ln(2)/$ doubling time. Reproduction number was calculated based on equation: $R_0 = 1 + \text{growth rate} \times \text{serial interval}$, assuming serial interval following a gamma distribution with a mean of 4.41 days and a standard deviation of 3.17 days.

	Estimated epidemic doubling times (95% CI)*		Epidemic growth rate (r, 95% CI)		Basic Reproduction number (95% CI) §	Effective Reproduction number (95% CI) §
	Feb 19 – Mar 1	Mar 6 – 19	Feb 19 – Mar 1	Mar 6 – 19	Feb 19 – Mar 1	Mar 6 – 19
Iran	1.20 (1.05, 1.45)	5.46 (5.29, 5.65)	0.58 (0.48, 0.66)	0.13 (0.12, 0.13)	3.50 (1.28, 8.14)	1.55 (1.06, 2.57)
Region 1	1.32 (1.16, 1.61)	6.04 (5.80, 6.29)	0.53 (0.43, 0.60)	0.11 (0.11, 0.12)	3.28 (1.26, 7.59)	1.50 (1.06, 2.42)
Region 2	1.12 (0.87, 1.59)	5.71 (5.32, 6.04)	0.62 (0.44, 0.80)	0.12 (0.11, 0.13)	3.69 (1.29, 8.84)	1.53 (1.06, 2.50)
Region 3	1.38 (1.12, 1.78)	6.23 (5.86, 6.51)	0.50 (0.39, 0.62)	0.11 (0.11, 0.12)	3.17 (1.24, 7.24)	1.48 (1.06, 2.37)
Region 4	1.67 (1.43, 2.30)	5.19 (4.58, 5.79)	0.41 (0.30, 0.49)	0.13 (0.12, 0.15)	2.79 (1.20, 6.15)	1.58 (1.07, 2.65)
Region 5	1.13 (0.92, 1.61)	3.92 (3.54, 4.32)	0.62 (0.43, 0.75)	0.18 (0.16, 0.20)	3.66 (1.30, 8.79)	1.77 (1.09, 3.19)

*Harmonic mean of the arithmetic means of 10,000 sets of simulated epidemic doubling times. §Calculated based on the 10,000 arithmetic means of 10000 sets of simulated epidemic doubling times and 10,000 random numbers drawn from a gamma distribution with a mean serial interval of 4.41 days (SD: 3.17 days).

Table S6: Manuscript pre-prints on the COVID-19 epidemic in Iran fit to Iranian official reports available on medRxiv as of April 2, 2020

Papers	medRxiv pre-print version as of Apr 2, 2020	Iranian official COVID-19 reports*: time range	Other data sources	Methods	Basic reproduction number	Effective reproduction number after social distancing implemented
Ahmadi et al. (9)	Pre-print version 2	February 19 through March 19, 2020	Not applied	Logistic differential equation, Gompertz differential equation, Von Bertalanffy's differential growth equation, Cubic Polynomial Polynomials	4.7	1.75 (Gompertz)
Ghaffarzadegan & Rahmandad (10)	Pre-print version 1	February 19 through March 19, 2020	unofficial reports; and international media news reports	Compartmental (SEIR) model fit to reported data	2.72 (90% CI, 2.57, 2.92)	<1 by March 20, 2020
Sahafizadeh and Sartoli (11)	Pre-print version 2	February 22 through March 18, 2020	Not applied	Compartmental (SIR) model fit to data	4.86 (1st week, with Feb 19, 2020 as day zero)	4.5 (2nd week); 4.29 (3 rd week); 2.1 (4 th week)
Zahiri et al. (12)	Pre-print version 1	February 19 through March 24, 2020	China's official COVID-19 reports	Compartmental (SIR) model fit to data; also fit Iranian data to the epidemic curve in China	Not reported	Not reported
Zareie et al.(13)	Pre-print version 1	January 22 [†] to March 8, 2020	China's official COVID-19 reports	Compartmental (SIR) model fit to China's data to obtain parameter estimates and then applied to Iran's data	Not reported	Not reported
Zhan et al.(14)	Pre-print version 1	February 19 through March 6, 2020	China's official COVID-19 reports	Compartmental (SEIR) model fit to epidemic data in 367 cities in China to generate historical profiles of epidemics (sets of	Not reported	Not reported

parameter values) that were compared to observed data in South Korea, Italy and Iran to make predictions based on the best-fit epidemic profiles of the SEIR model

Notes: Manuscript pre-prints uploaded to medRxiv server (medrxiv.org) are working papers and they are not (or have not yet been) peer-reviewed.

* Official daily reports of deaths, recovered and cumulative number of infected individuals from the Iranian Ministry of Health and Medical Education. †The abstract of Zareie et al. mentioned “January 22”; however, the first confirmed cases of Iran were reported on February 19, 2020.

Figure S1. Cumulative incidence curve of Iran and its Regions 1 to 5. The data for the five regions on March 2 and 3, 2020 were imputed.

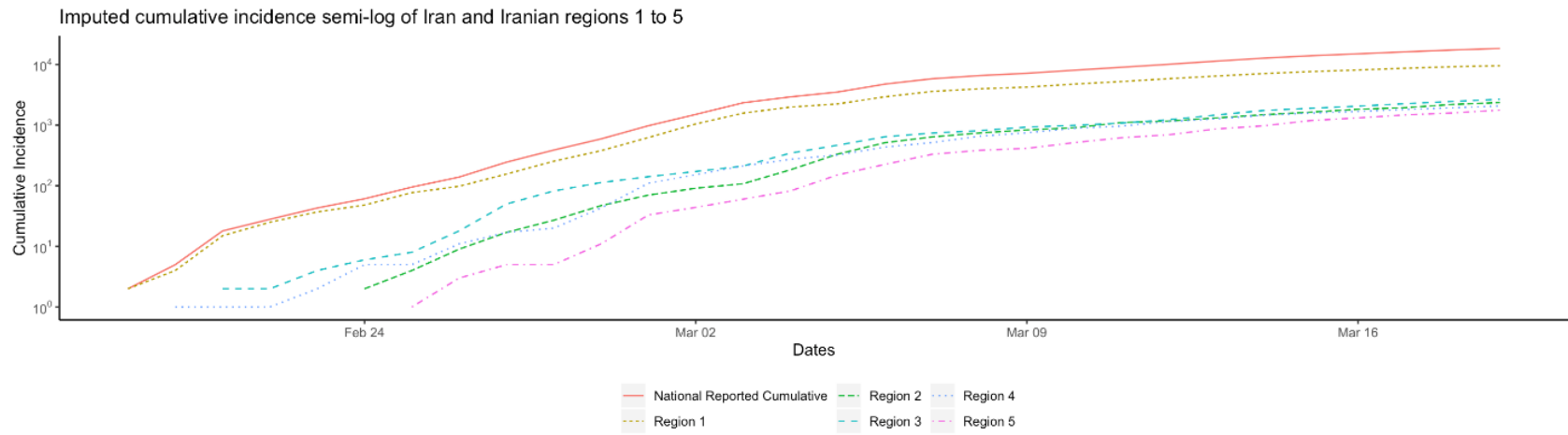
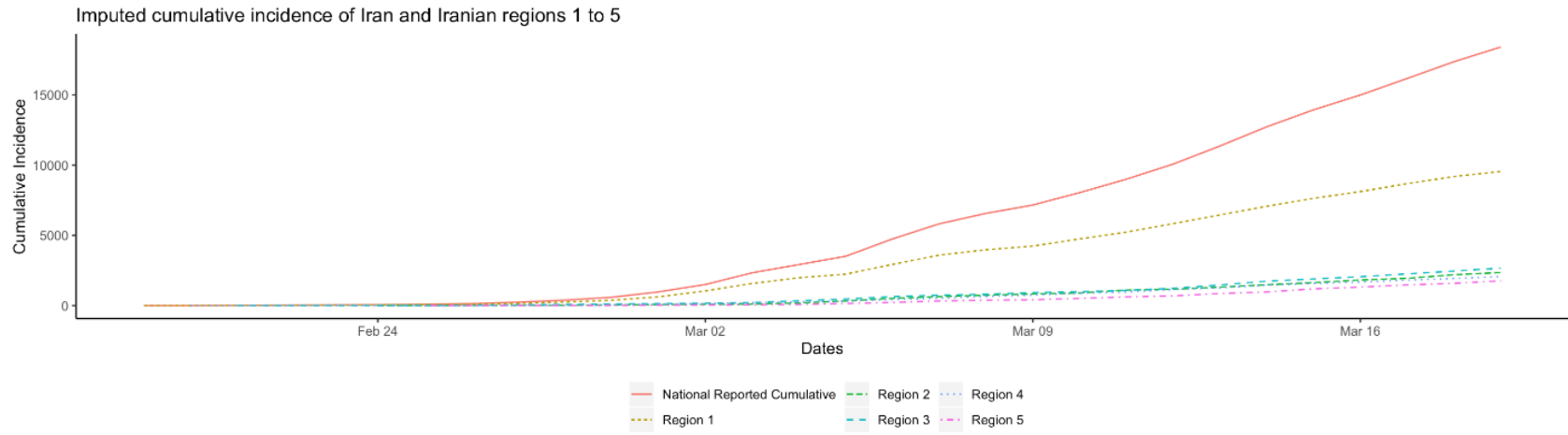


Figure S2: Method 1: Region 1. The mean basic reproduction number of COVID-19 in Region 1, Iran, with 95% confidence interval. Estimates for growth rate, r , and the scaling of the growth rate parameter, p , are also provided. The plot in the lower panel depicts the fit of the Generalized Growth Model to the Iranian data assuming Poisson error structure as of March 1, 2020.

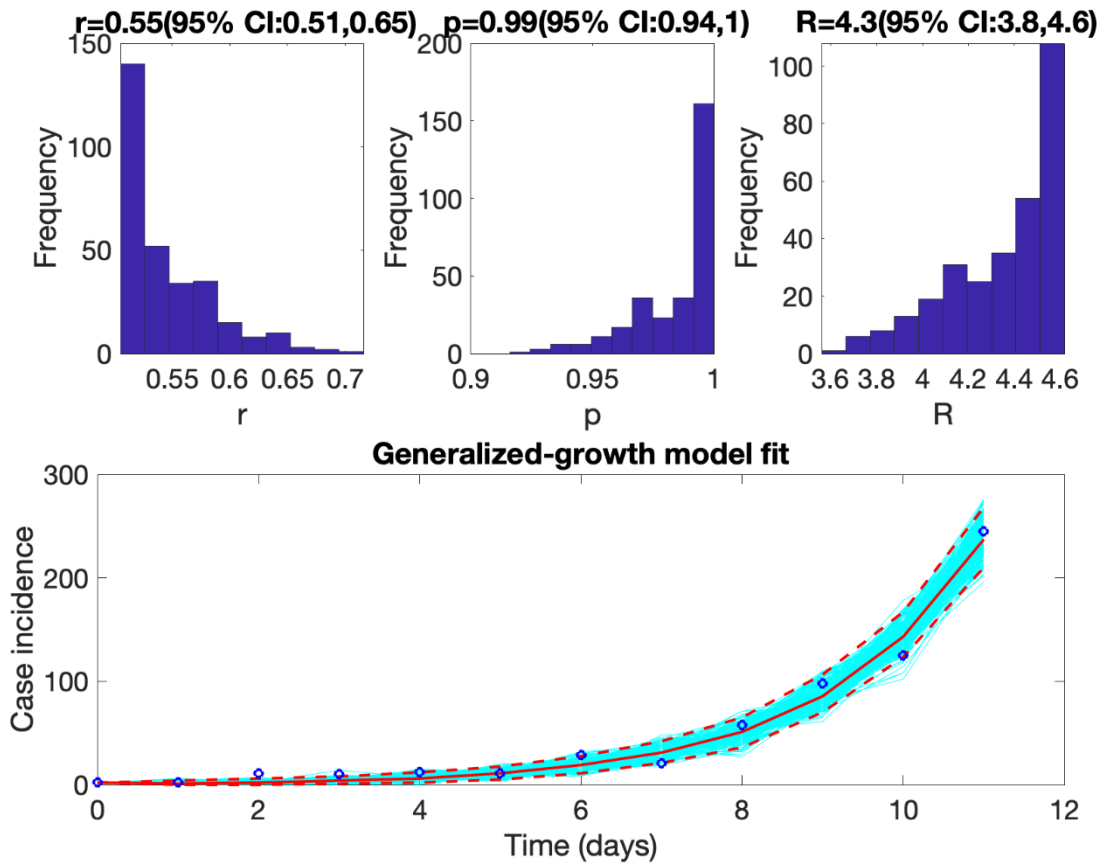


Figure S3: Method 1: Region 2. The mean basic reproduction number of COVID-19 in Region 2, Iran, with 95% confidence interval. Estimates for growth rate, r , and the scaling of the growth rate parameter, p , are also provided. The plot in the lower panel depicts the fit of the Generalized Growth Model to the Iranian data assuming Poisson error structure as of March 1, 2020.

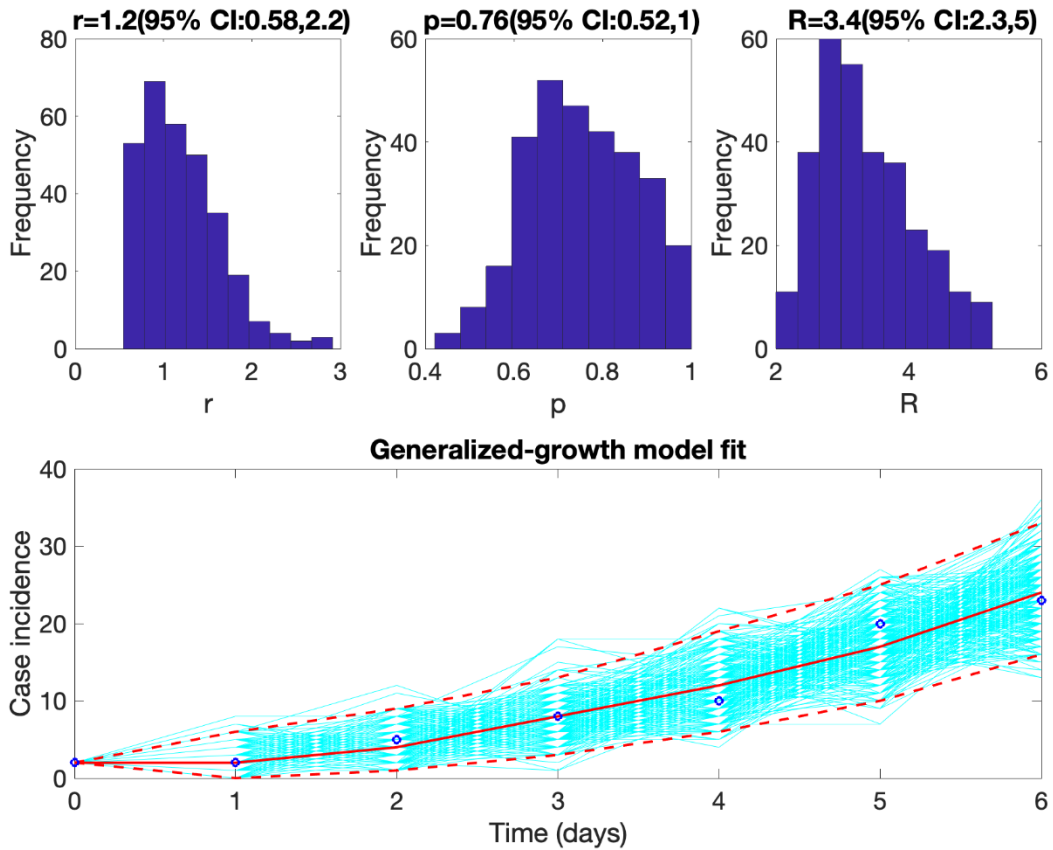


Figure S4: Method 1: Region 3. The mean basic reproduction number of COVID-19 in Region 3, Iran, with 95% confidence interval. Estimates for growth rate, r , and the scaling of the growth rate parameter, p , are also provided. The plot in the lower panel depicts the fit of the Generalized Growth Model to the Iranian data assuming Poisson error structure as of March 1, 2020.

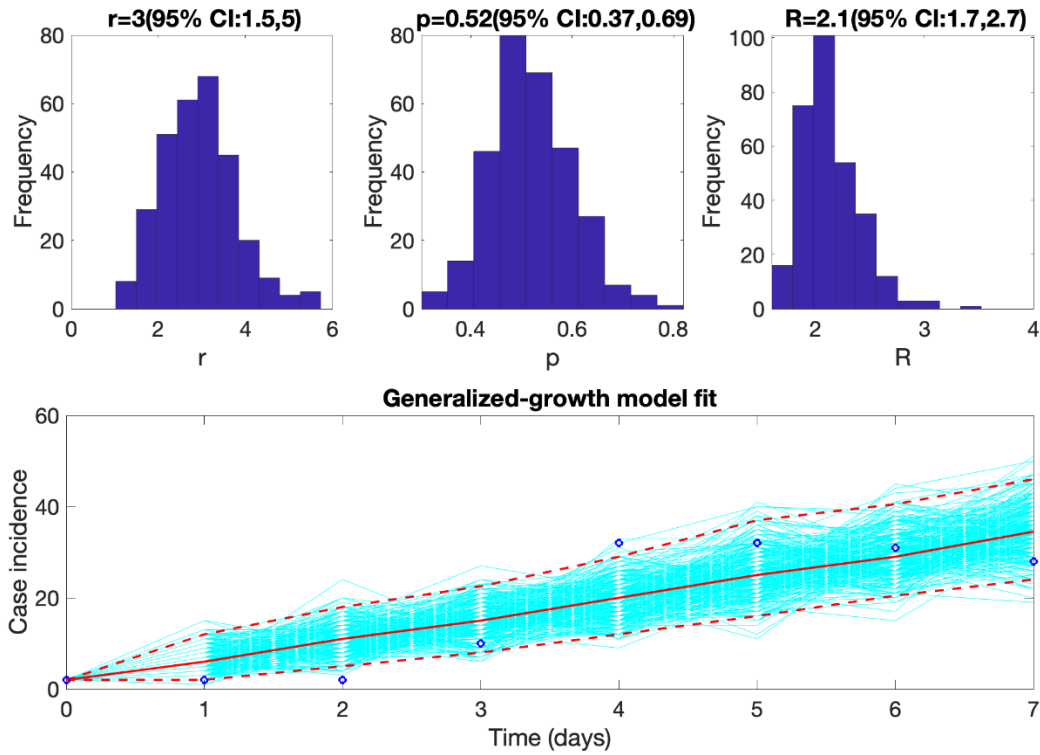


Figure S5: Method 1: Region 4. The mean basic reproduction number of COVID-19 in Region 4, Iran, with 95% confidence interval. Estimates for growth rate, r , and the scaling of the growth rate parameter, p , are also provided. The plot in the lower panel depicts the fit of the Generalized Growth Model to the Iranian data assuming Poisson error structure as of March 1, 2020.

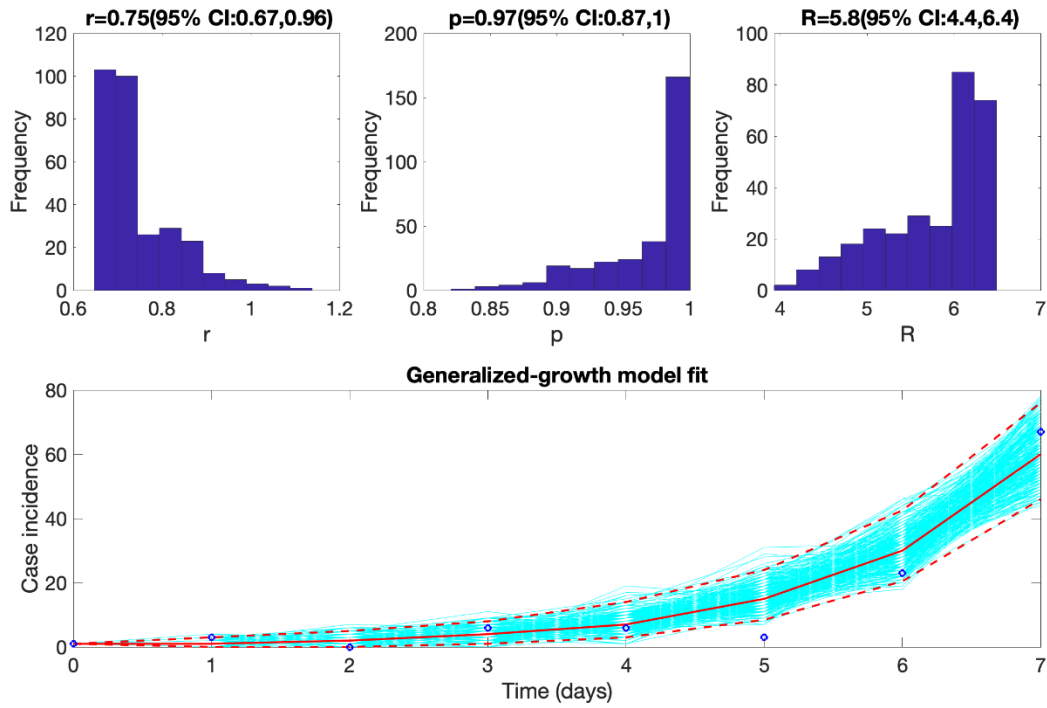


Figure S6: Method 1: Region 5. The mean basic reproduction number of COVID-19 in Region 5, Iran, with 95% confidence interval. Estimates for growth rate, r , and the scaling of the growth rate parameter, p , are also provided. The plot in the lower panel depicts the fit of the Generalized Growth Model to the Iranian data assuming Poisson error structure as of March 1, 2020.

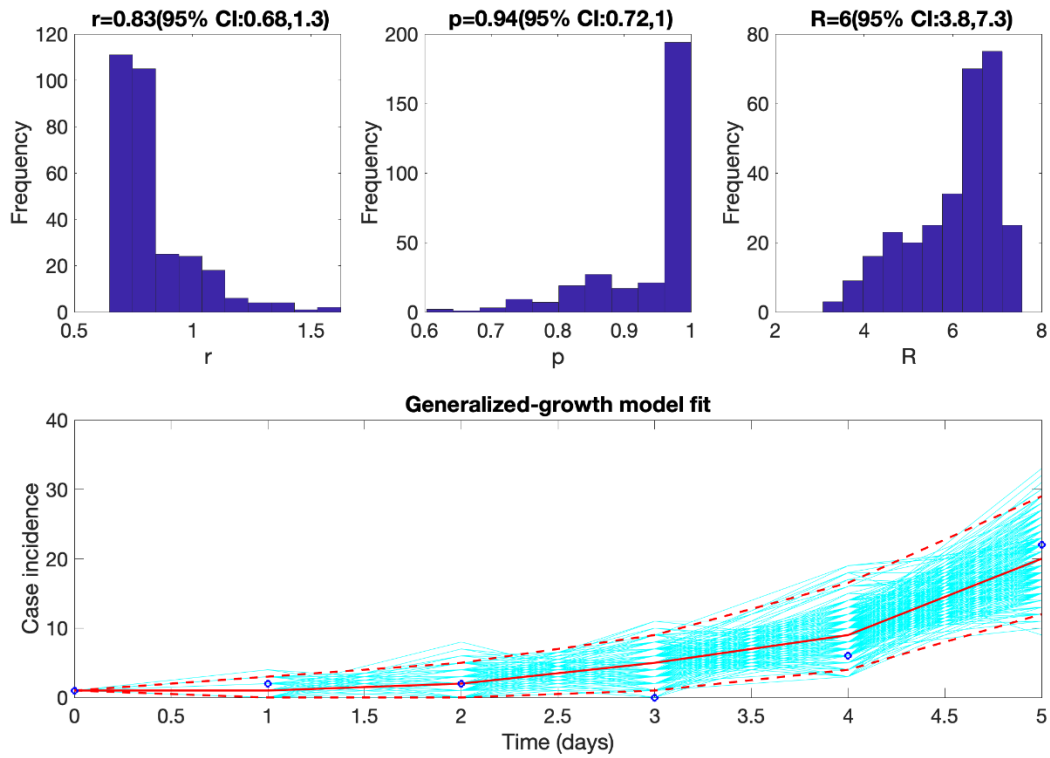


Figure S7. Method 2: Part 1 (February 19 through March 1, 2020): The COVID-19 epidemic doubling time (black diamond) and the harmonic mean of the arithmetic means of 10,000 estimates with 95% confidence intervals (circle and bar) of Iran and its five regions.

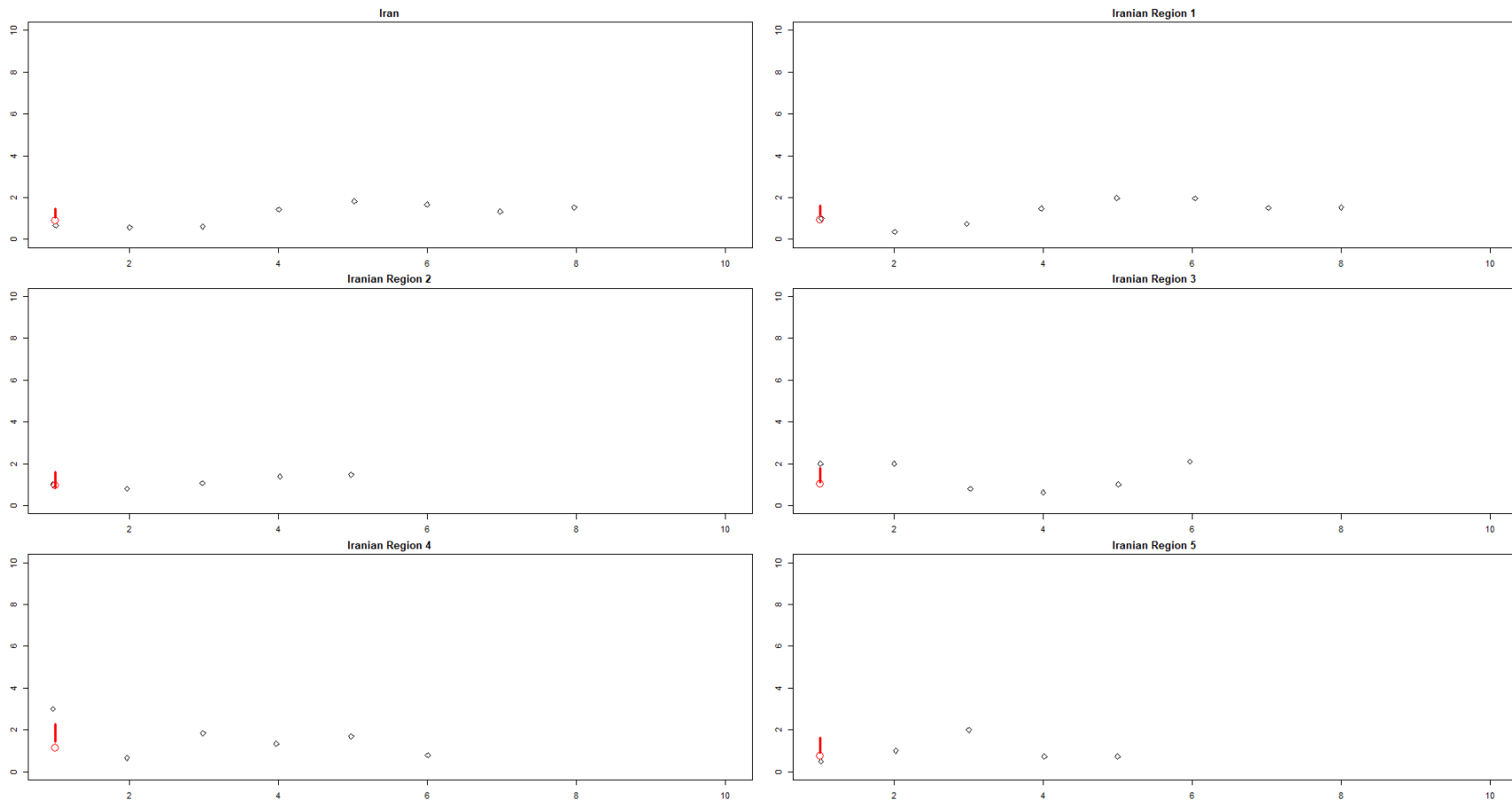
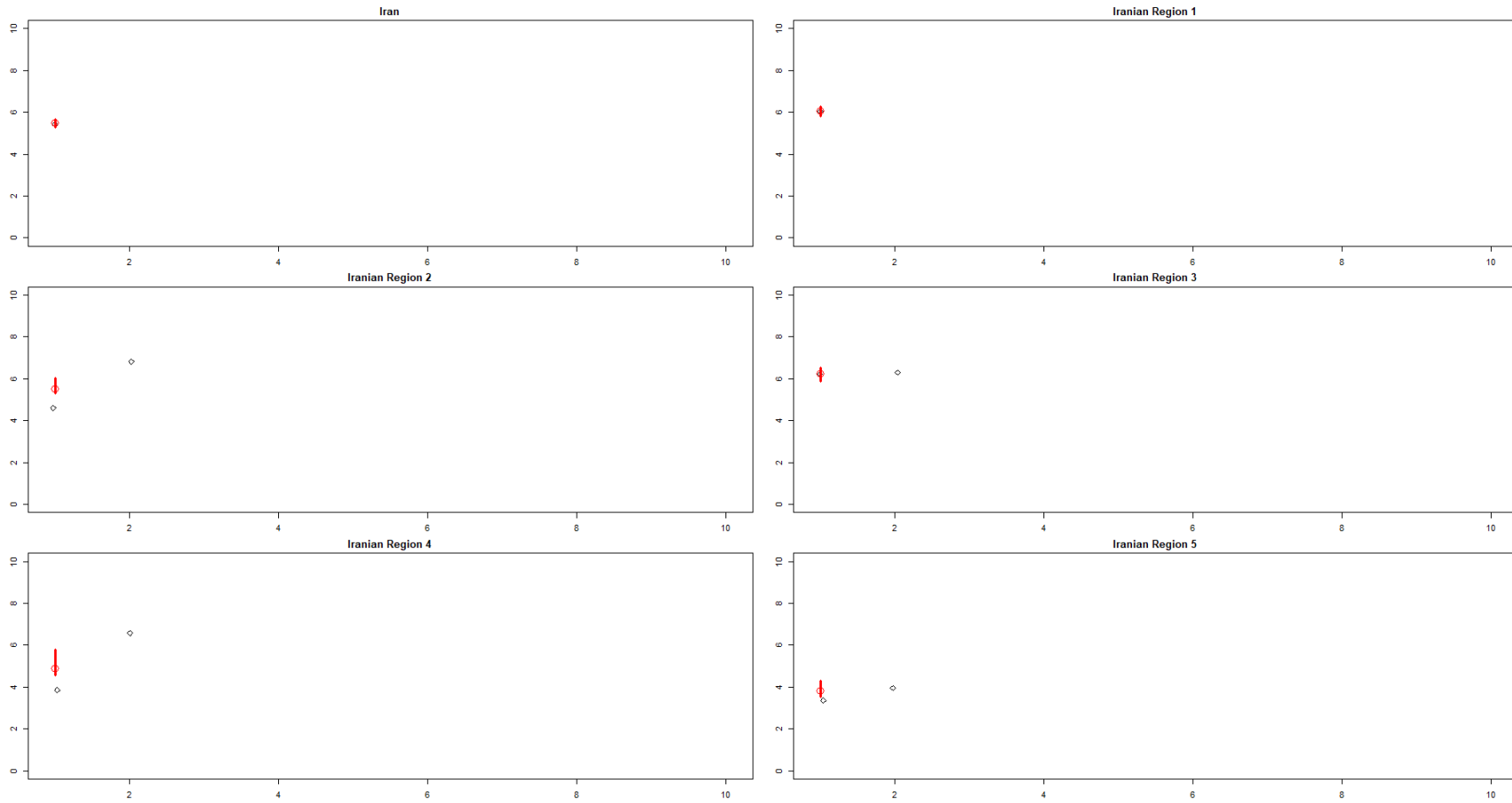


Figure S8. Method 2: Part 2 (March 6 through 19, 2020): The COVID-19 epidemic doubling time (black diamond) and the harmonic mean of the arithmetic means of 10,000 estimates with 95% confidence intervals (circle and bar) of Iran and its five regions.



Authors' contribution:

Conceptualization of the project: I. C. H. Fung and G. Chowell

MATLAB codes: G. Chowell

R codes: K. Muniz-Rodriguez and I. C. H. Fung

Data analysis (Method 1): G. Chowell

Data analysis (Method 2): K. Muniz-Rodriguez and I. C. H. Fung

Writing the first draft of the manuscript: I. C. H. Fung

Writing the section on Method 1 in Technical Appendix: G. Chowell

Manuscript editing: G. Chowell, I. C. H. Fung and K. Muniz-Rodriguez

Downloading Iranian official press releases and double-checking data: S. R. Ferdosi

Downloading news reports about COVID-19 epidemic in Iran: S. R. Ferdosi, S. K. Ofori

International COVID-19 epidemic data and press release curation team at Georgia Southern University: K.

Muniz-Rodriguez, S. K. Ofori

International COVID-19 epidemic data curation team at Georgia State University: Y. Lee, A. Tariq