

Supplementary Information for:

Can N95 respirators be reused after disinfection? And for how many times?

Lei Liao¹, Wang Xiao¹, Mervin Zhao¹, Xuanze Yu¹, Haotian Wang¹, Qiqi Wang¹, Steven Chu²⁻³, Yi Cui^{4-5*}

¹C Air, Inc., Sunnyvale CA, USA

²Department of Physics, Stanford University, Stanford CA, USA

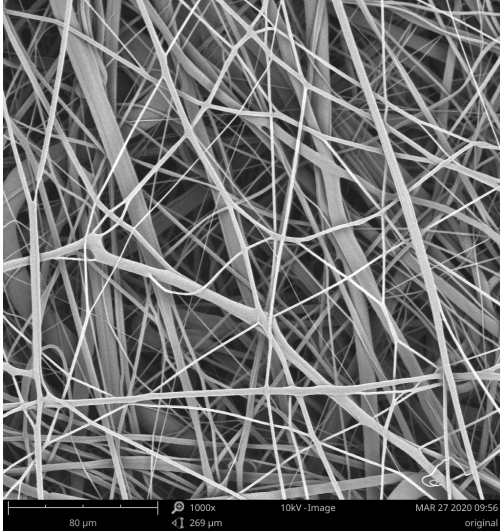
³Department of Molecular and Cellular Physiology, Stanford University, Stanford CA, USA

⁴Department of Materials Science and Engineering, Stanford University, Stanford CA, USA

⁵Stanford Institute for Materials and Energy Sciences, SLAC National Accelerator Laboratory, Menlo Park CA, USA

*Correspondence to: yicui@stanford.edu

A



B



Figure S1. Comparison of fibers before and after alcohol treatment. A. Before treatment, B. after treatment. No differences in morphology, or damages were observed.

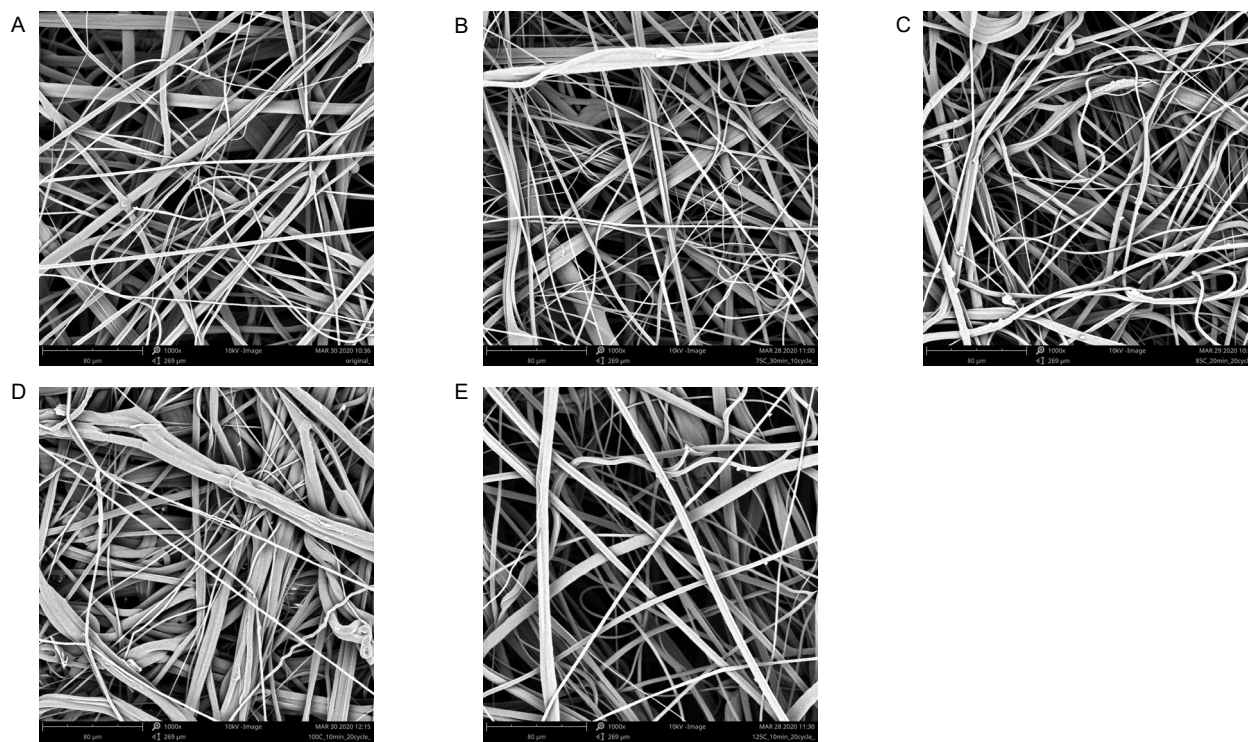


Figure S2. SEM images of the meltblown fabric after different temperature treatments. A. Original conditions. **B.** 75 °C (30 minutes). **C.** 85 °C (20 minutes). **D.** 100 °C (10 minutes). **E.** 125 °C (10 minutes). No significant changes were found in any of the heated samples compared with the original sample.

Table S1. Filtration efficiency and pressure drop after ten-cycles of treatment. We note that steam clearly had degradation in the filtration efficiency.

Treatment	Mode of application	Treatment time (min)/cycle	Filtration efficiency (%)	Pressure drop (Pa)
Initial samples			96.52 ± 1.37	8.7 ± 1.0
Dry heat (75 °C)	Static-air oven	30	97.25 ± 0.34	8.0 ± 1.0
Steam	Beaker of boiling water	10	80.65 ± 2.97	8.3 ± 1.2
UVGI (254 nm, 8 W)	Sterilization cabinet	30	96.78 ± 0.80	9.0 ± 1.7

Table S2. Evolution of filtration efficiency based on steam treatment in a meltblown. We see that after cycle 5 the efficiency has a significant drop.

Cycle	Efficiency (%)	Pressure drop (Pa)
Initial	96.52 ± 1.37	8.7 ± 1.0
Steam (10 min/cycle)		
1	97.97 ± 0.41	10.0 ± 0.0
3	96.41 ± 1.07	9.0 ± 1.0
5	85.04 ± 1.05	7.3 ± 1.2
10	80.65 ± 2.97	8.3 ± 1.2

Table S3. Evolution of filtration efficiency with various temperatures in environmental chamber SH-642. The humidity was set to the minimum set point, 30% RH at 85 °C. Above 85 °C the humidity cannot be well-controlled and will be <30% RH.

Cycle	Efficiency (%)	Pressure Drop (Pa)
Initial	96.02 ± 1.35	8.3 ± 1.0
75 °C (30 minutes/cycle)		
1	95.35 ± 0.96	8.0 ± 1.0
3	94.99 ± 0.79	7.6 ± 0.5
5	95.25 ± 0.77	7.3 ± 1.1
10	95.94 ± 1.84	8.6 ± 0.5
15	94.44 ± 0.37	7.0 ± 1.0
20	96.49 ± 0.59	6.6 ± 0.5
85 °C (20 minutes/cycle)		
1	95.96 ± 0.36	7.6 ± 0.5
3	96.81 ± 0.85	7.6 ± 1.5
5	95.56 ± 1.16	8.0 ± 1.7
10	95.40 ± 0.27	7.6 ± 0.5
15	96.07 ± 0.21	8.0 ± 1.7
20	96.79 ± 0.18	9.0 ± 0.0
100 °C (10 minutes/cycle)		
1	94.71 ± 0.72	7.3 ± 0.5
3	94.79 ± 0.30	8.0 ± 0.0
5	94.58 ± 0.78	9.0 ± 1.0
10	94.11 ± 1.37	8.6 ± 1.1
15	95.95 ± 0.91	10.0 ± 1.0
20	95.03 ± 1.31	9.6 ± 0.5
125 °C (10 minutes/cycle)		
1	96.23 ± 0.65	9.6 ± 1.1
3	93.98 ± 0.38	9.6 ± 1.5
5	91.08 ± 1.64	7.6 ± 0.5
10	90.68 ± 1.01	8.3 ± 1.1
15	90.94 ± 1.04	8.0 ± 1.7
20	91.27 ± 1.62	8.0 ± 1.7