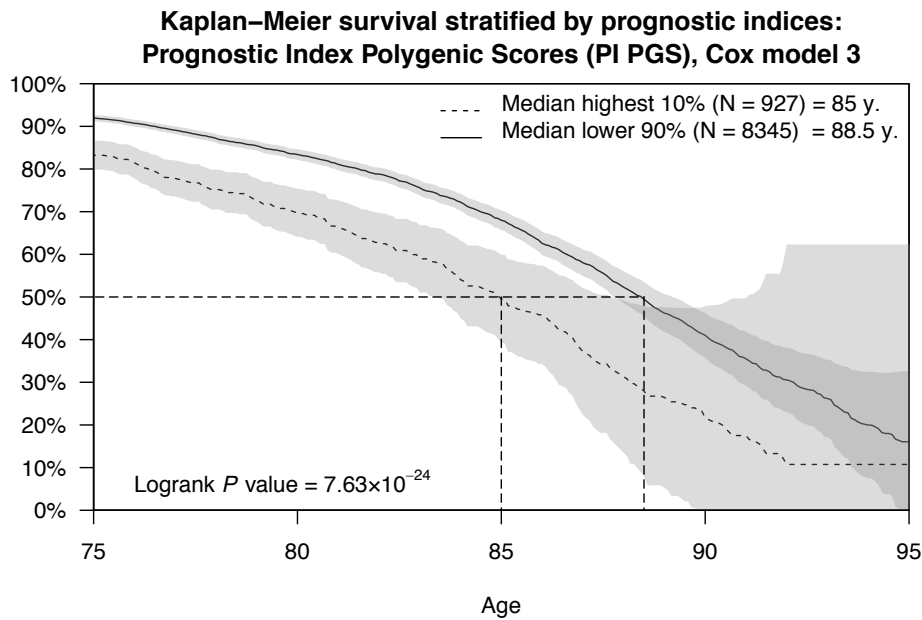
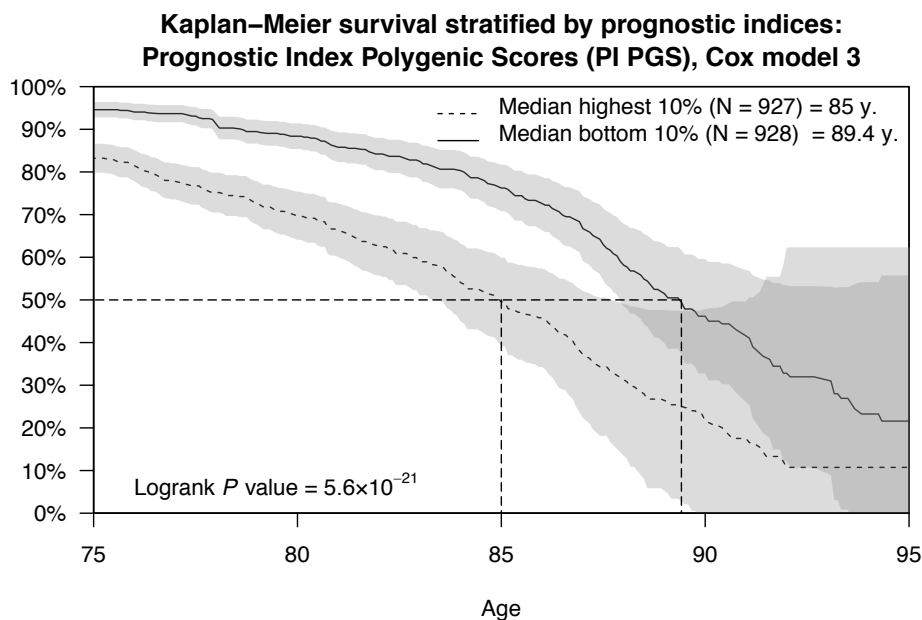


Figure 1. Kaplan-Meier survival curves stratified by the prognostic index of the polygenic scores. Using the prognostic index of the polygenic scores (\widehat{PI}_{PGS}), computed with the coefficient estimates of Cox models (3) and (4), we performed two comparisons of stratified survival functions. The first comparison (panels **a** and **c**) was stratified by the top versus lower nine deciles of the PI distribution, while the second comparison (panels **b** and **d**) was stratified by the top versus bottom decile. The dashed lines display the median survival in the two strata. The log-rank P value indicates whether the survival functions (not the median) of the two strata are different.

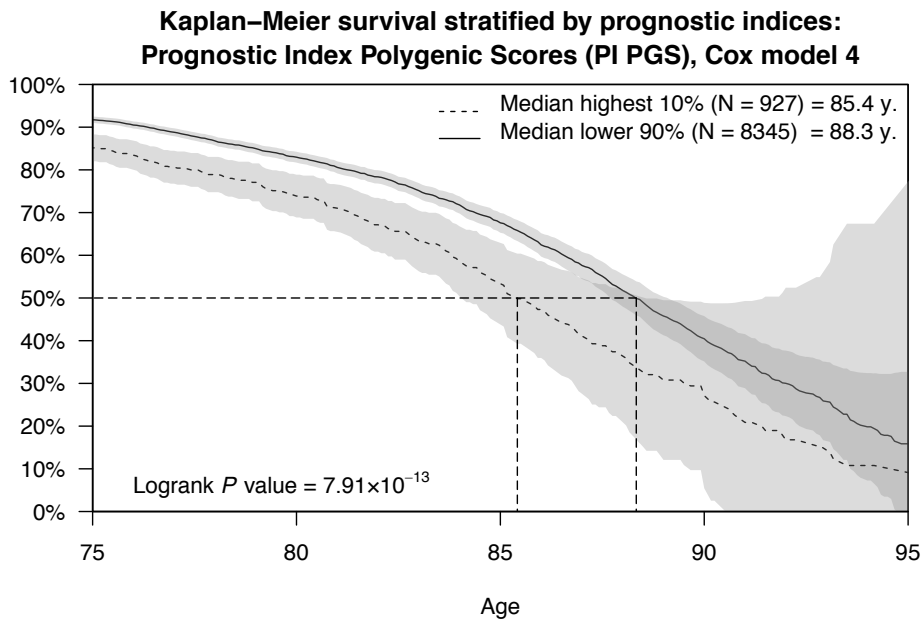
a



b



c



d

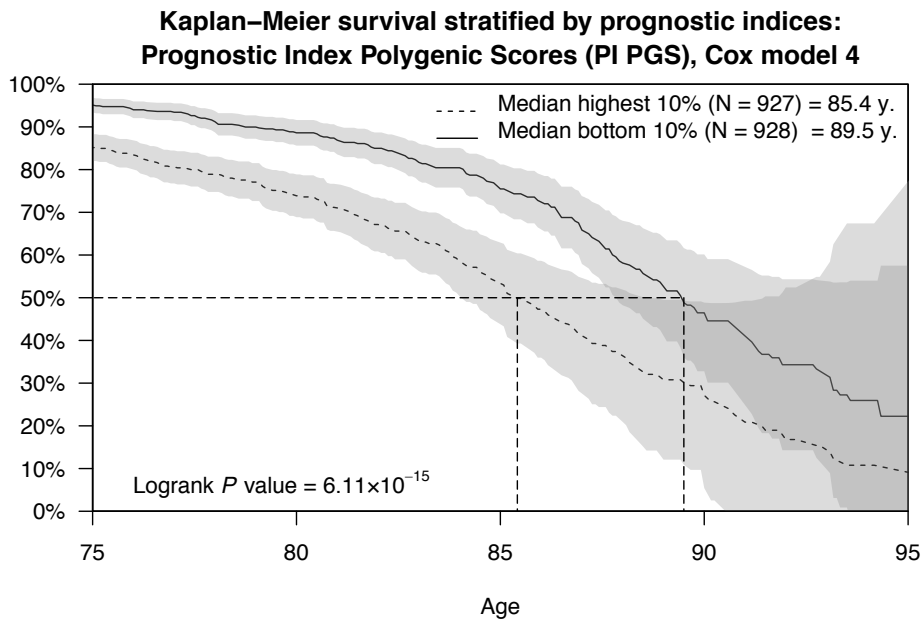
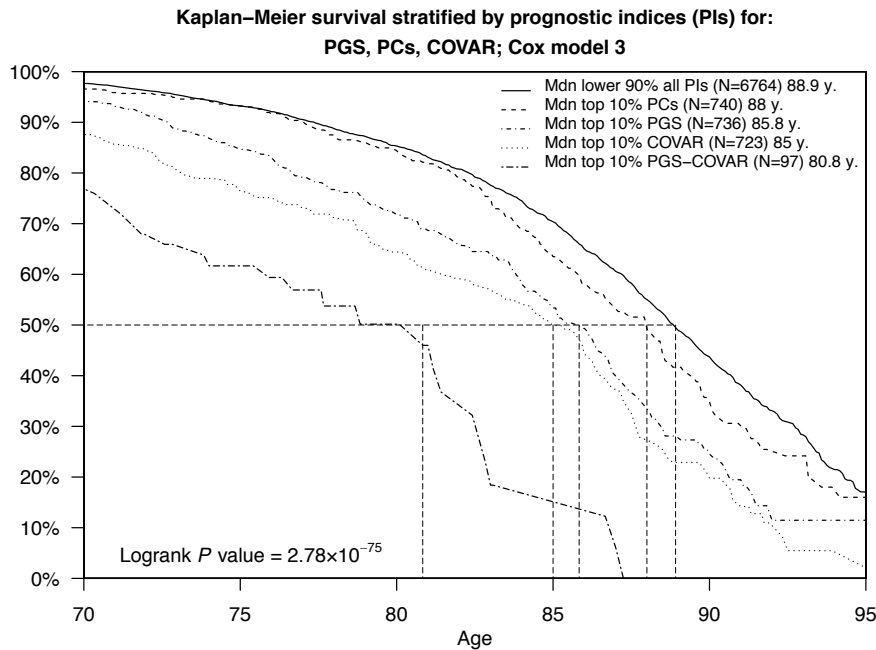
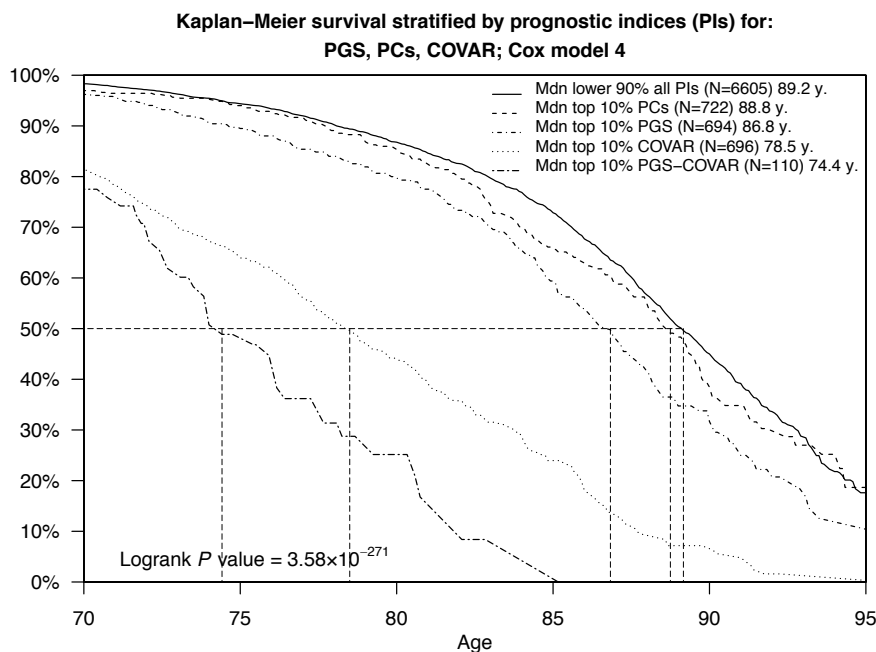


Figure 2 Kaplan-Meier survival curves stratified by the three prognostic indices. Using the prognostic indices of the polygenic scores (\widehat{PI}_{PGS}), the genetic PCs (\widehat{PI}_{PC}), and the covariates (\widehat{PI}_{COVAR}), computed with the coefficient estimates of Cox models 3 (panel **a**) and 4 (panel **b**), we compared the simultaneously stratified survival functions by the top versus lower nine deciles of the distribution of the three PIs. The dashed lines display the median survival in the strata. The logrank P value indicates whether the survival functions (not the median) of the strata are different. Three strata are not displayed in the figure and are instead reported in **Table 5**.

a



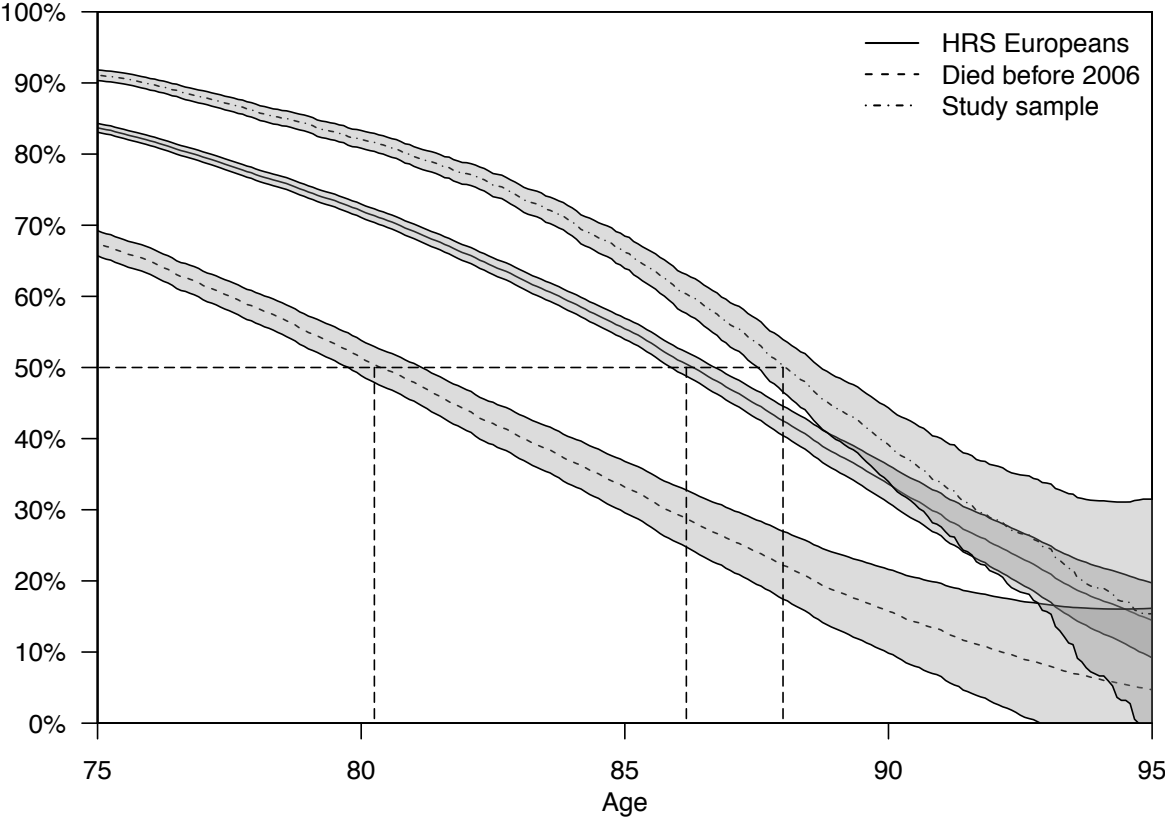
b



Supplementary Figure 1. Kaplan-Meier survival curves for European HRS respondents.

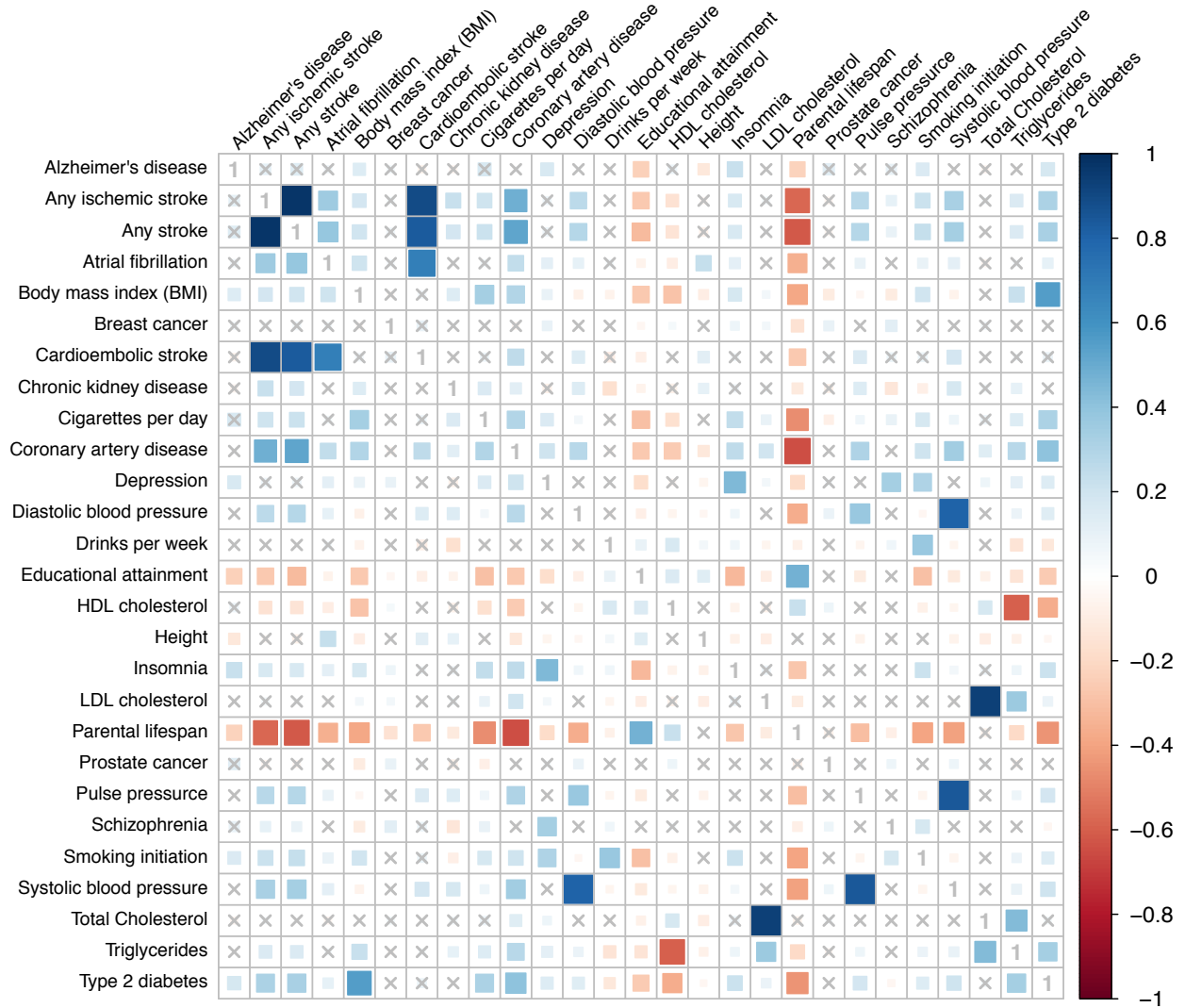
The figure displays estimated Kaplan-Meier survival curves for the full sample of European HRS respondents ($N = 27,345$), and the subset of those that died prior to the collection of genotype data ($N = 5,940$), as well as our genotyped study sample ($N = 9,272$). The dashed lines show the median survival of these three groups. The grey areas are 95% confidence intervals.

Survival curves European HRS respondents



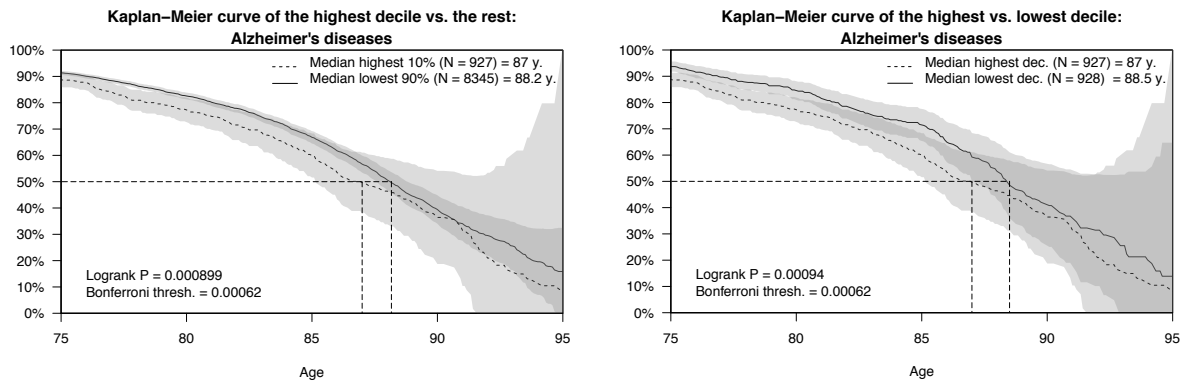
Supplementary Figure 2. Genetic correlations (r_g) estimated with LD Score regression.

The figure displays pair-wise genetic correlations estimated with the LD Score regression method¹. Grey crosses show estimates with P value greater than 0.05.

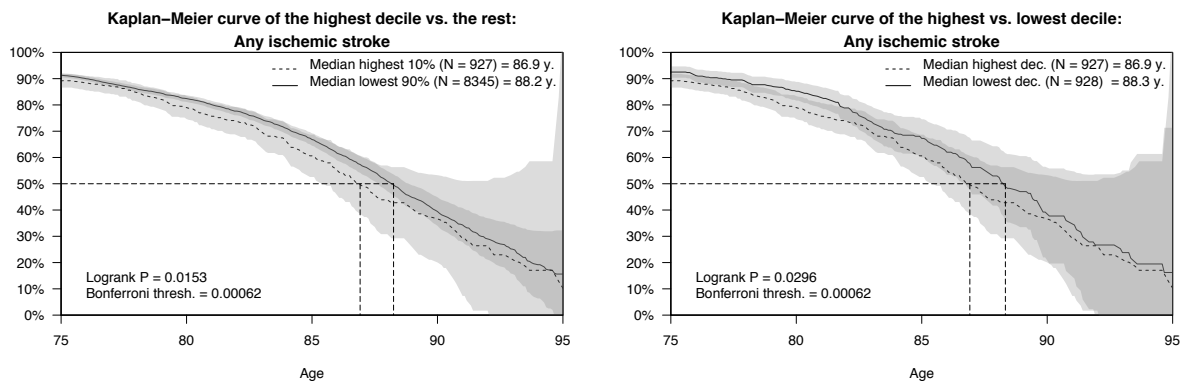


Supplementary Figure 3. Univariate survival analysis of respondent survival. For each polygenic score, we performed two comparisons of stratified survival functions: the first comparison (left column) was stratified by the top versus lower nine deciles of the polygenic score distribution, and the second comparison (right column) was stratified by the top versus bottom decile. The dashed lines display the median survival in the two strata. The logrank *P* value indicates whether the survival functions (not the median) of the two strata in each comparison are different. The grey areas are 95% confidence intervals. The Bonferroni-corrected *P* value threshold is equal to 0.05/81, corrected for testing 27 traits across the respondents, and their mothers and fathers; and should be considered conservative.

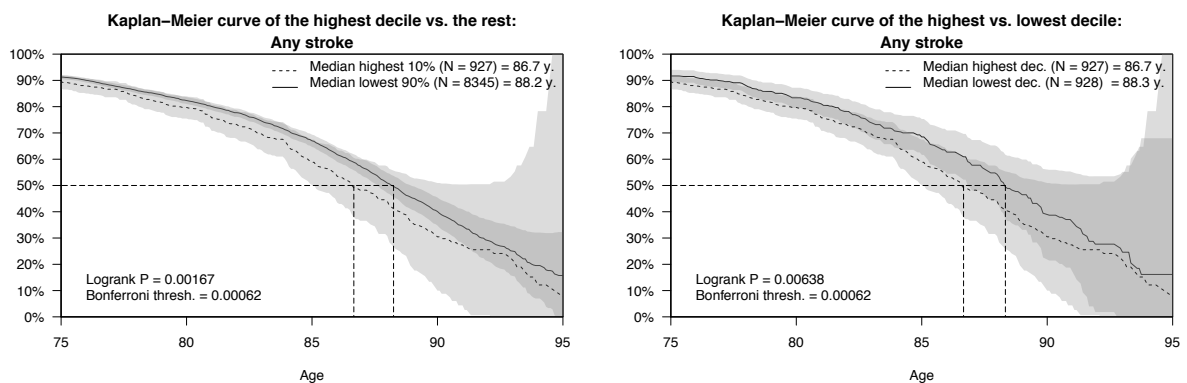
a



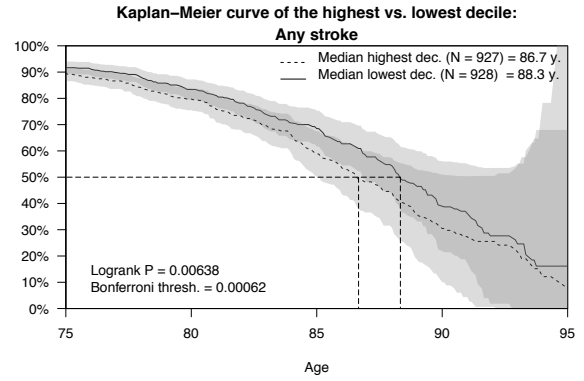
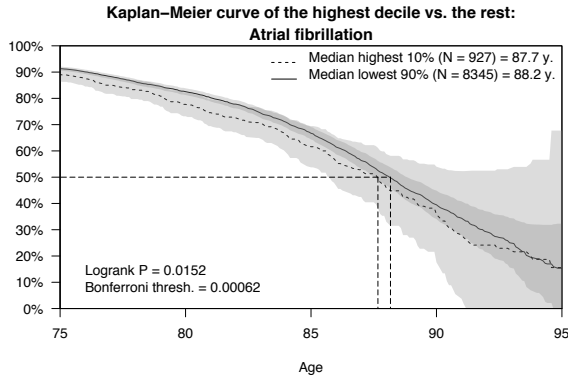
b



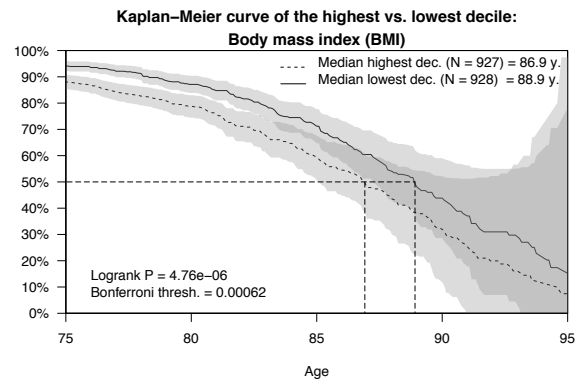
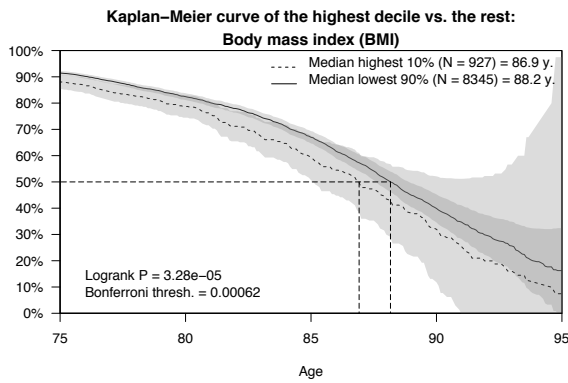
c



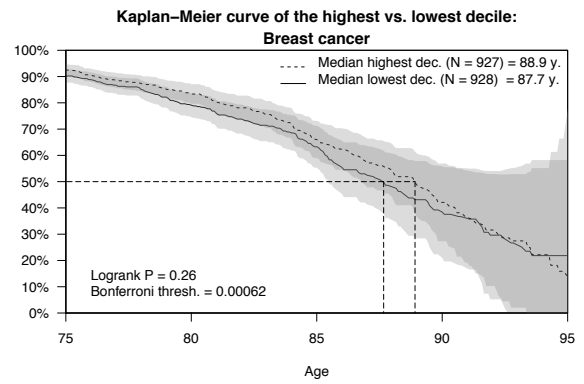
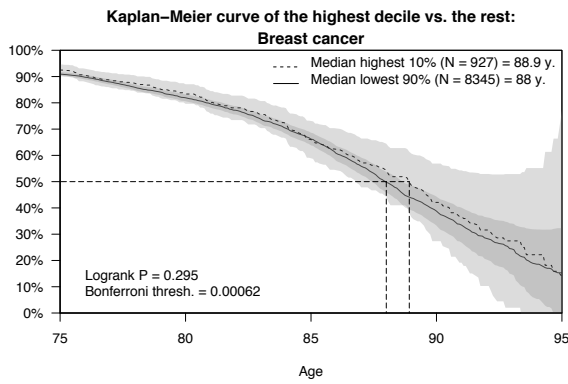
d



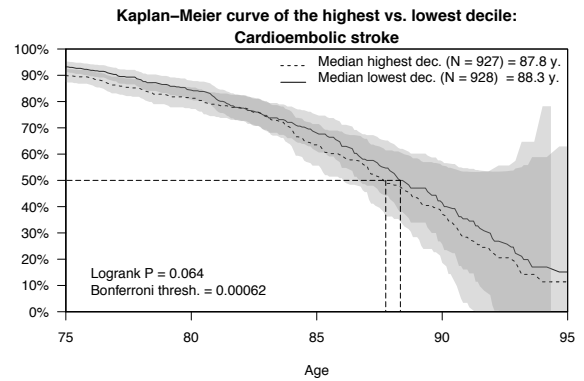
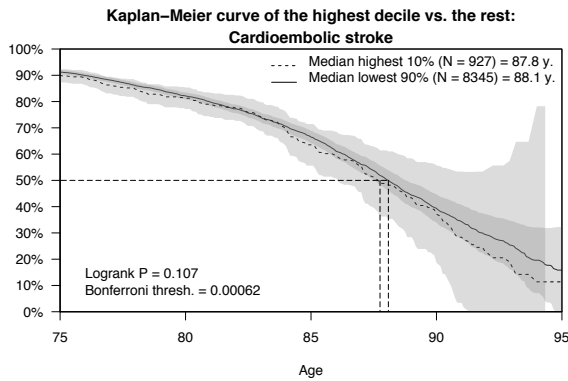
e



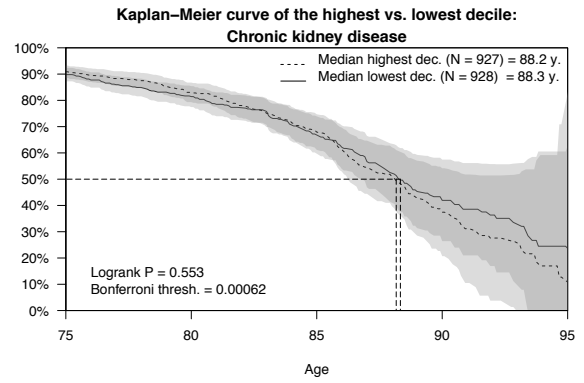
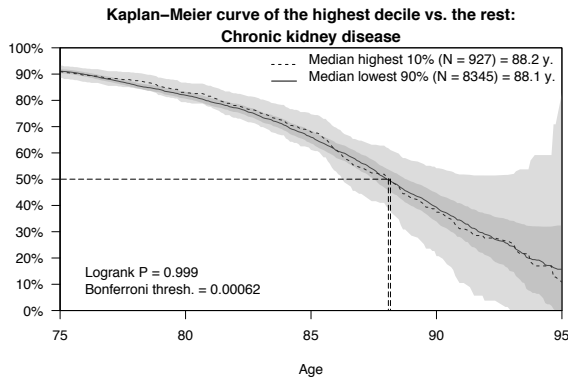
f



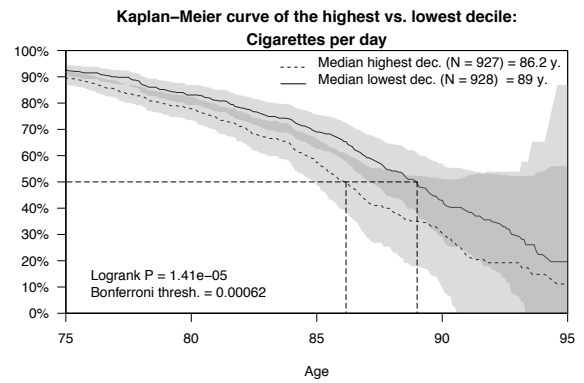
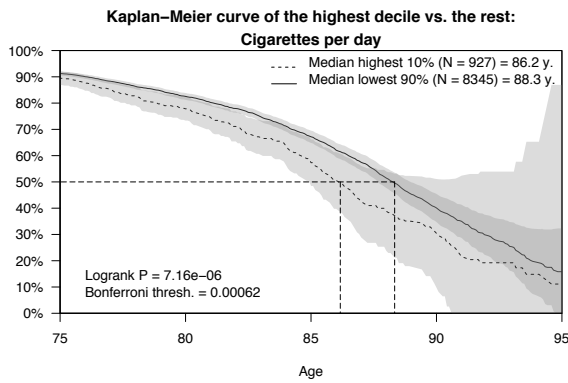
g



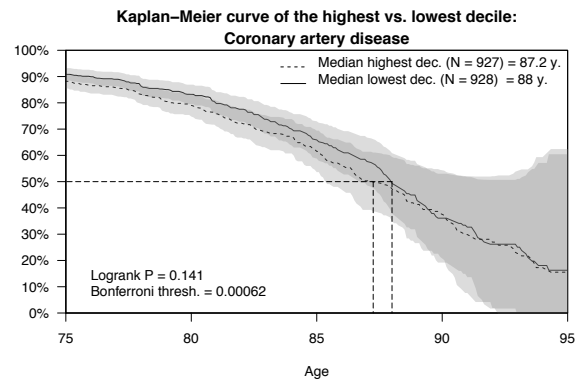
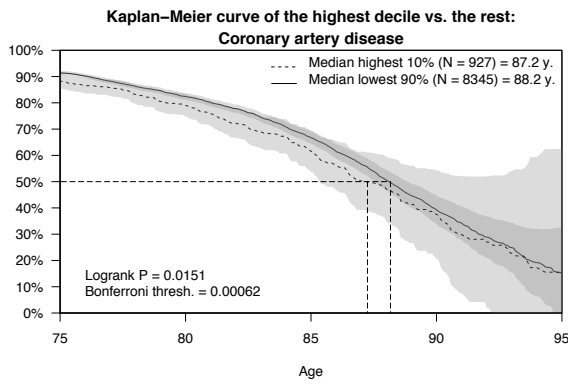
h



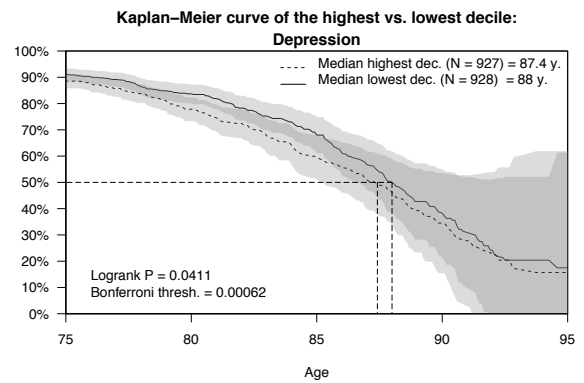
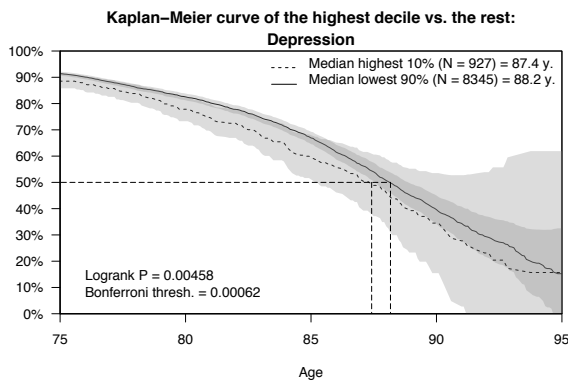
i



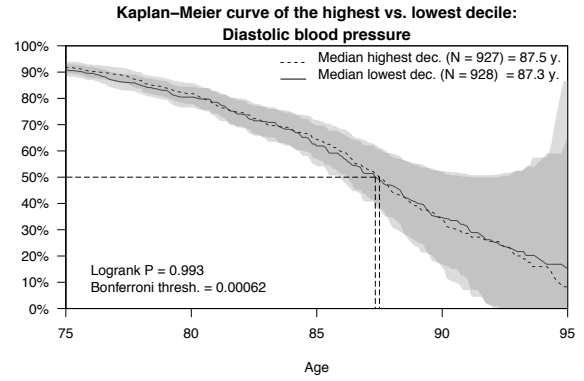
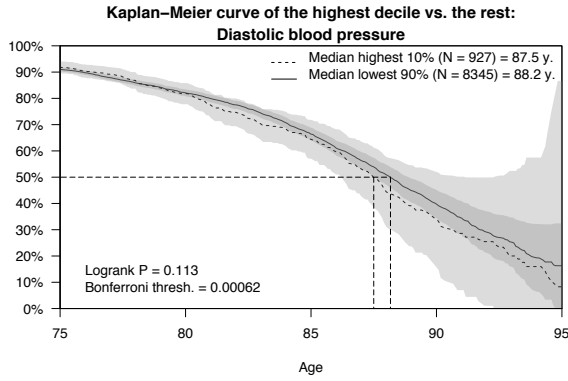
j



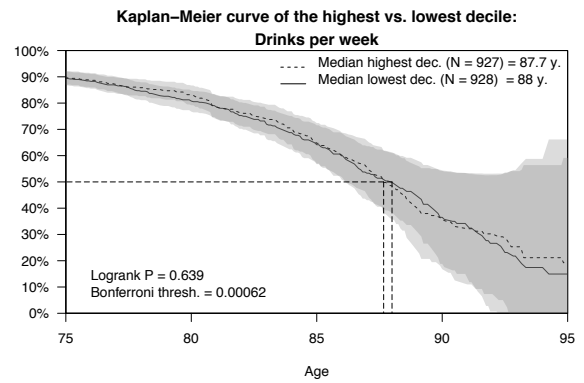
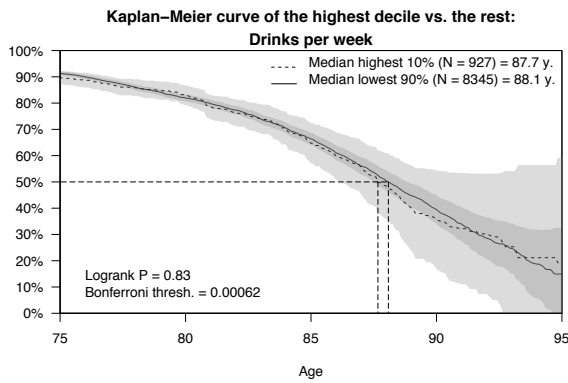
k



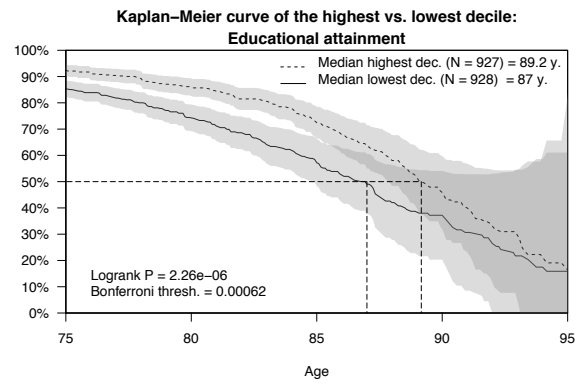
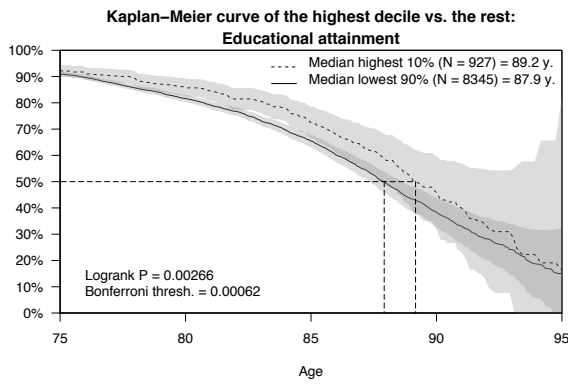
l



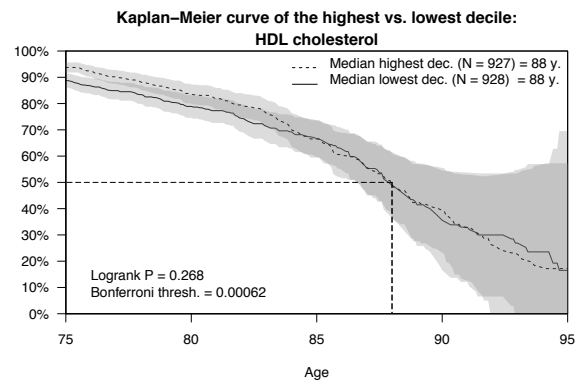
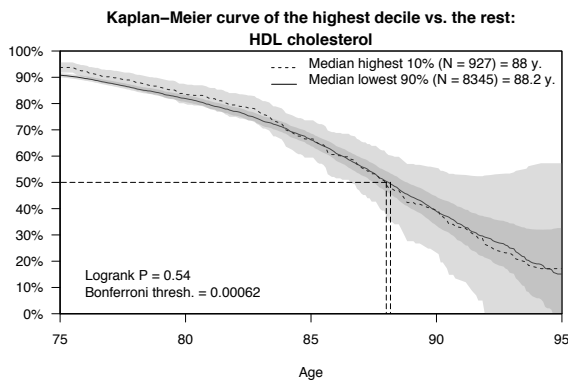
m



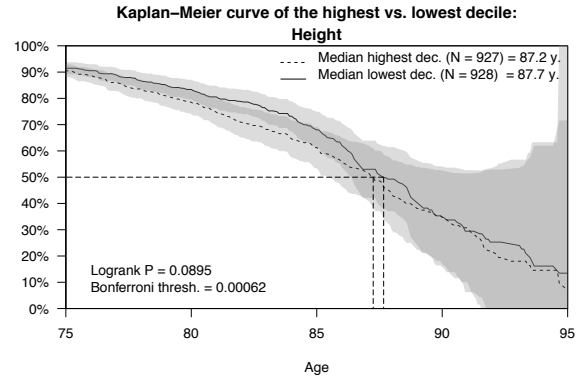
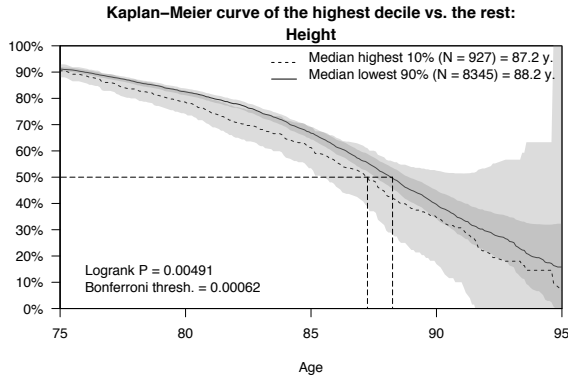
n



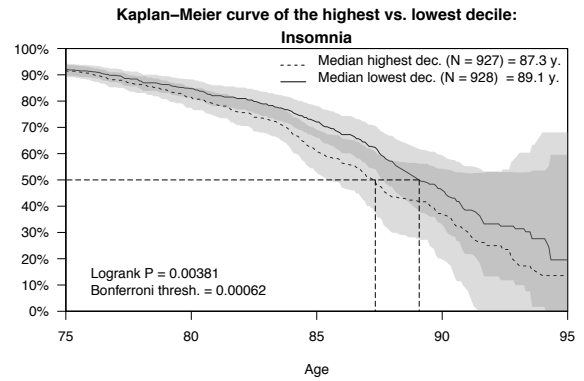
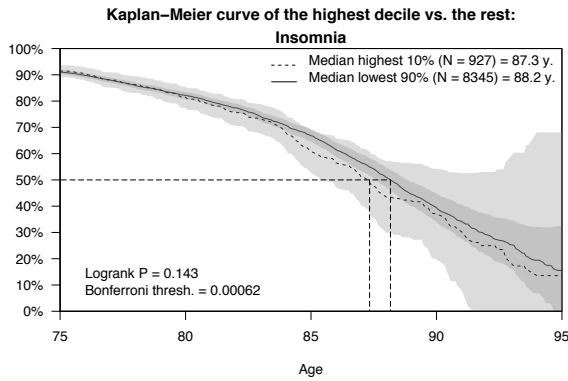
o



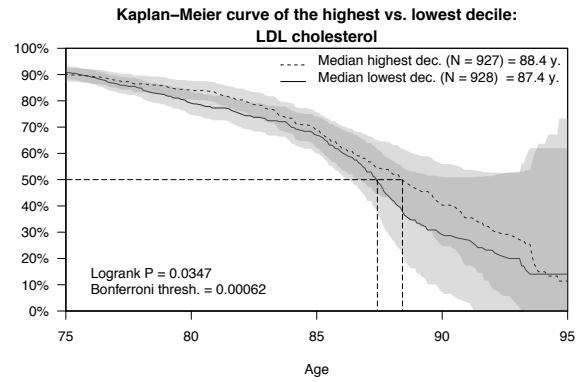
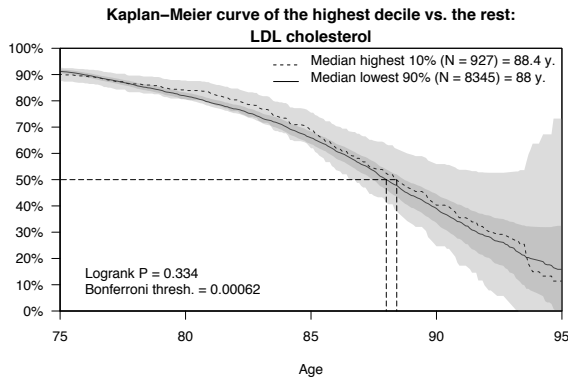
p



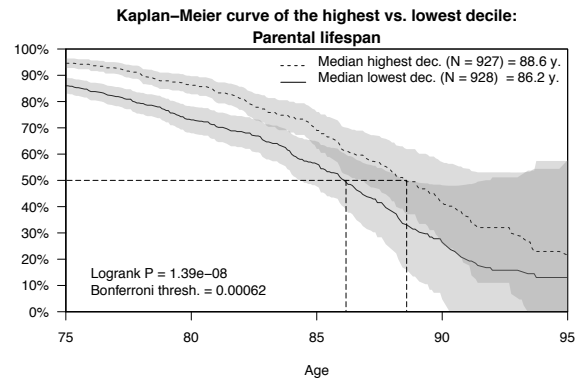
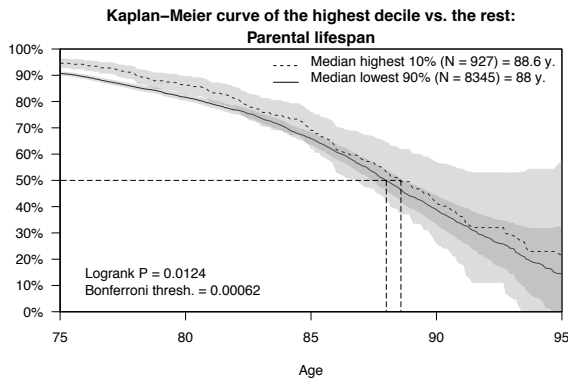
q



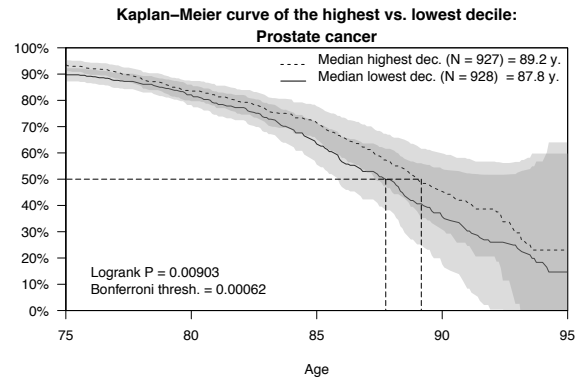
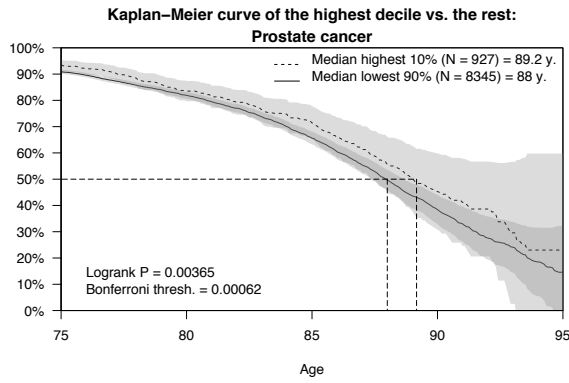
r



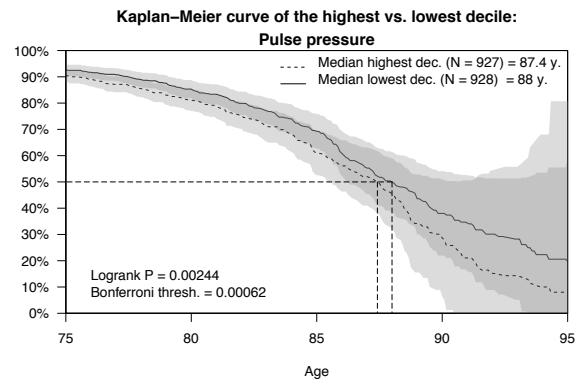
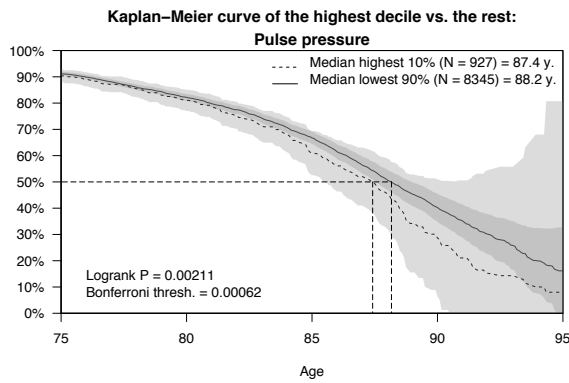
s



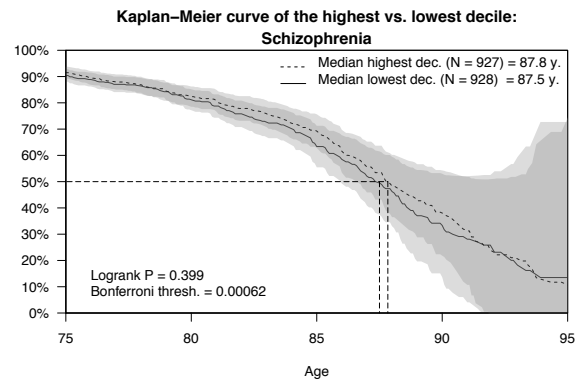
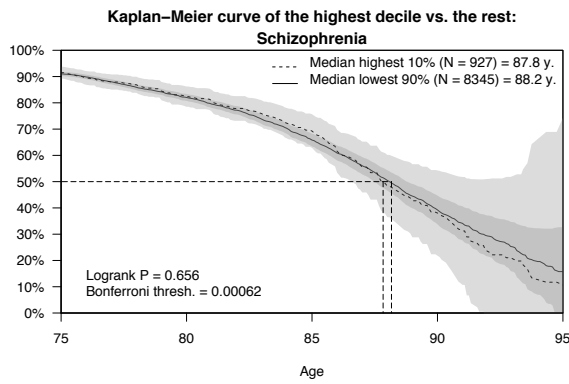
t



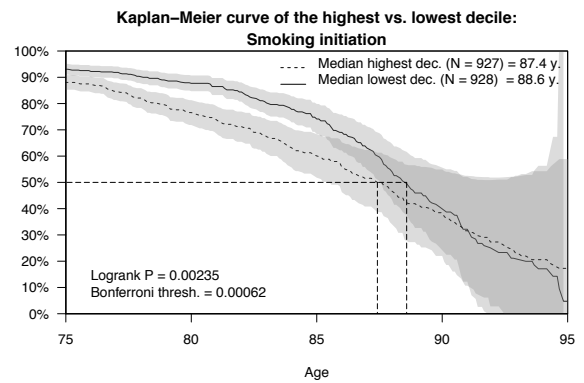
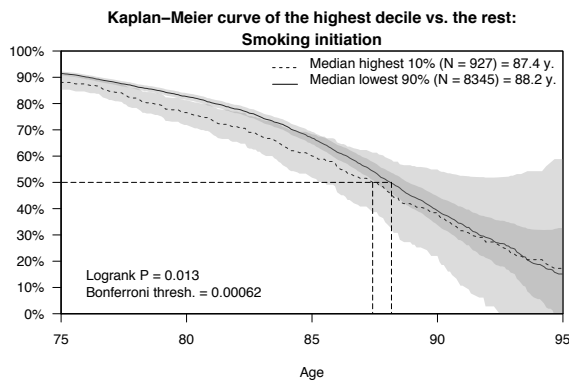
u



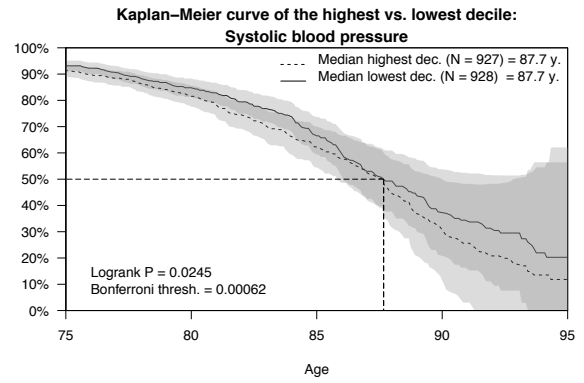
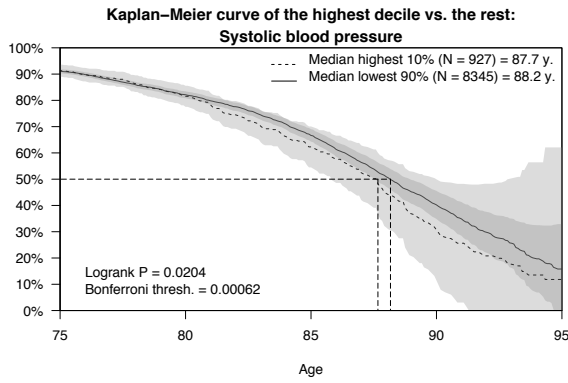
v



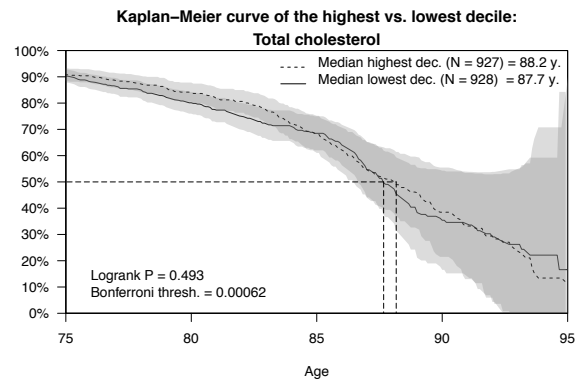
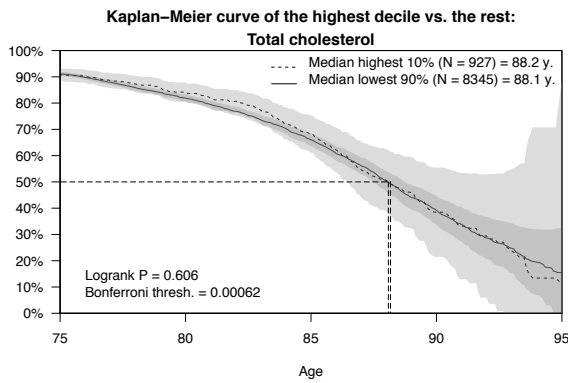
x



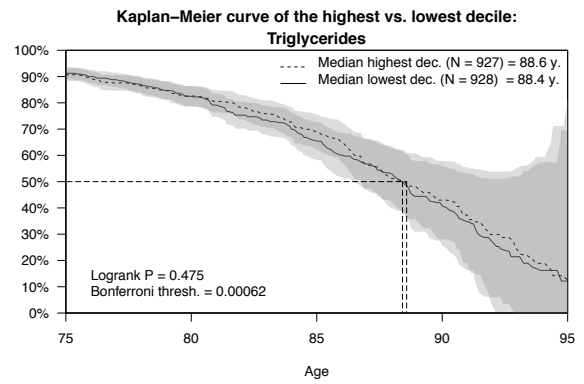
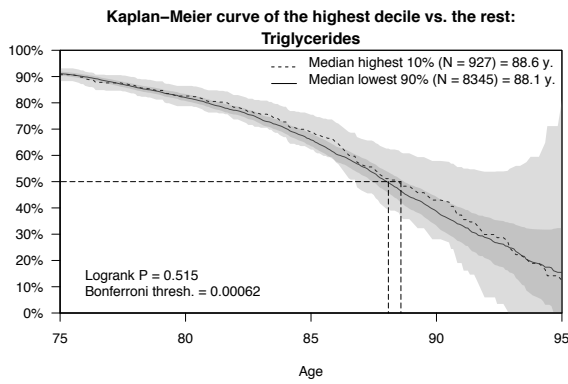
y



z

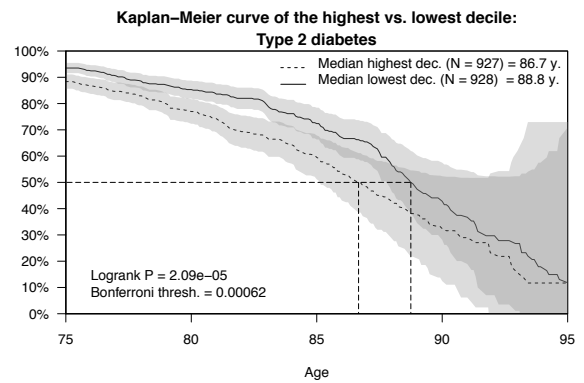
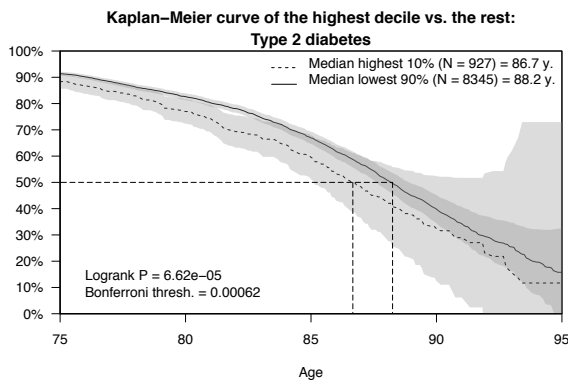


aa



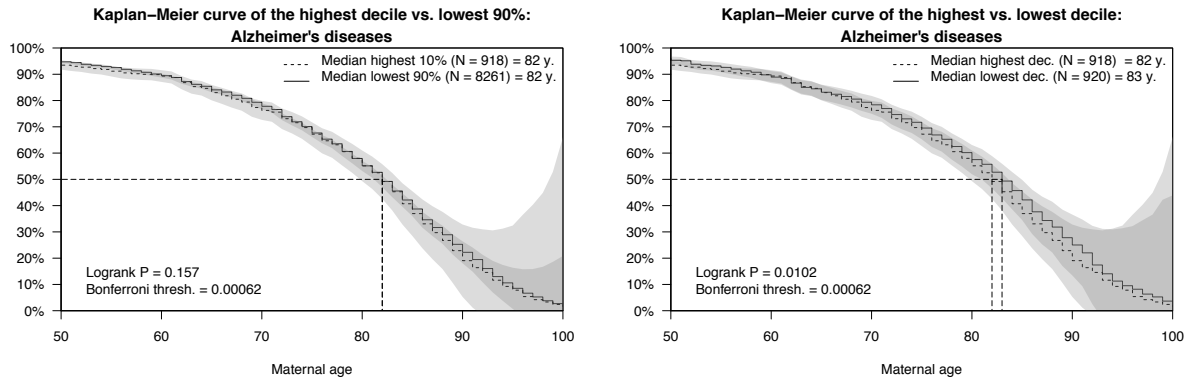
b

b

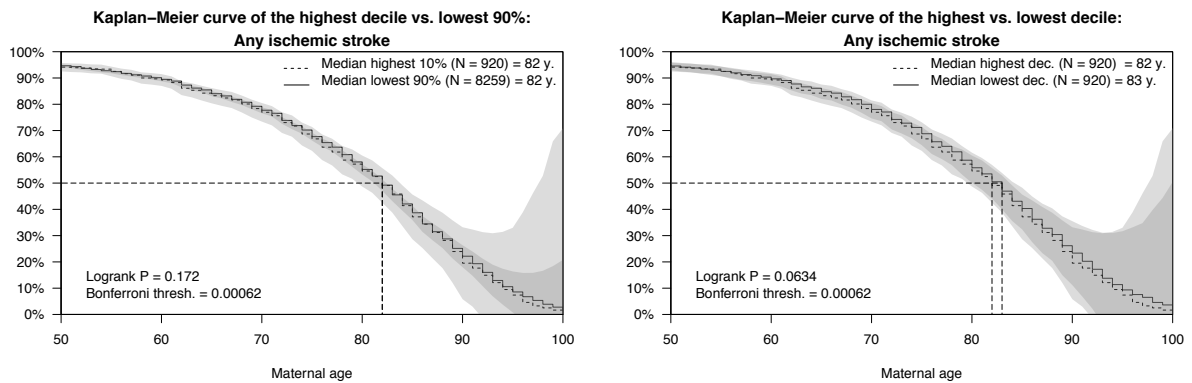


Supplementary Figure 4. Univariate survival analysis of maternal survival. For each polygenic score, we performed two comparisons of stratified survival functions: the first comparison (left column) was stratified by the top versus lower nine deciles of the polygenic score distribution, and the second comparison (right column) was stratified by the top versus bottom decile. The dashed lines display the median survival in the two strata. The logrank *P* value indicates whether the survival functions (not the median) of the two strata in each comparison are different. The grey areas are 95% confidence intervals. The Bonferroni-corrected *P* value threshold is equal to 0.05/81, corrected for testing 27 traits across the respondents, and their mothers and fathers; and should be considered conservative.

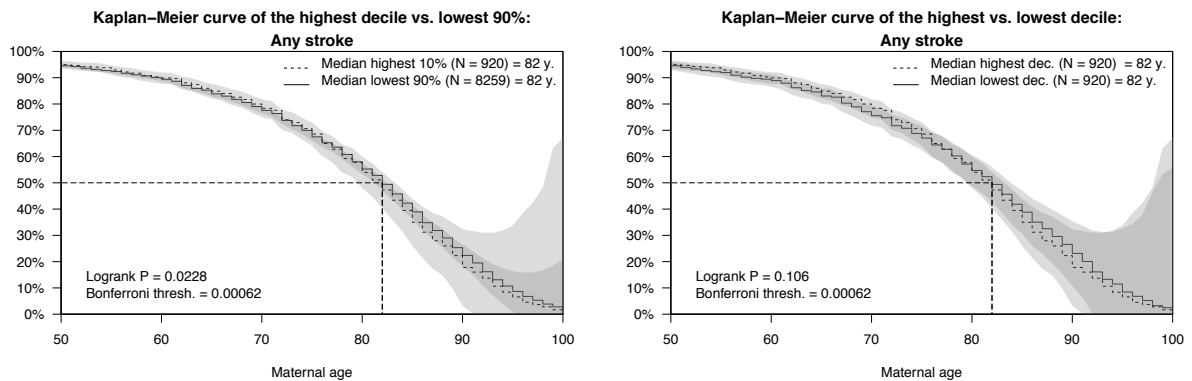
a



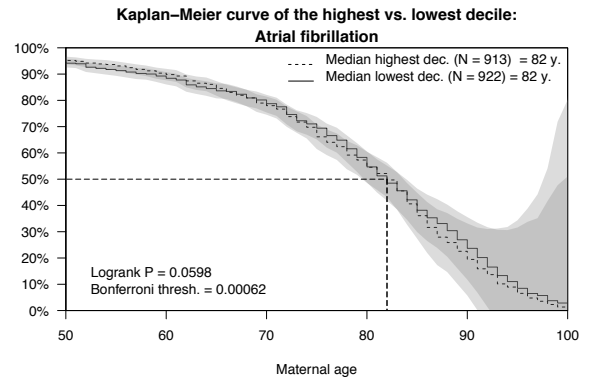
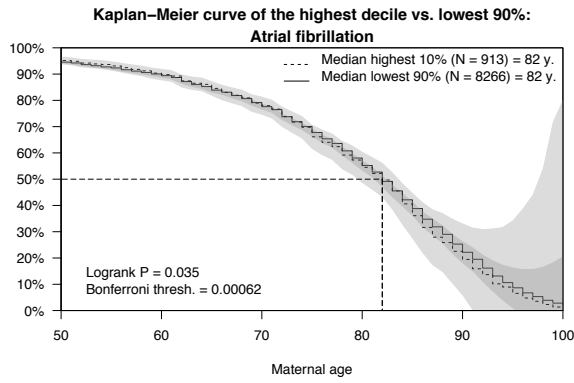
b



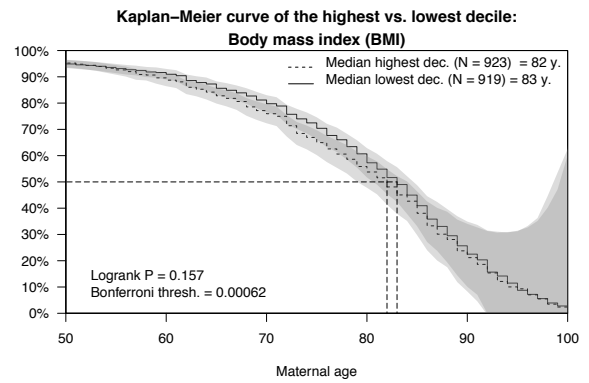
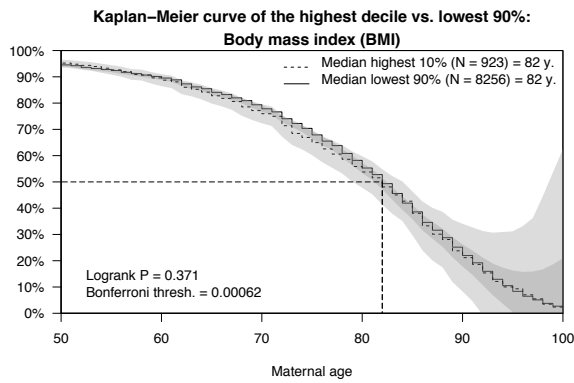
c



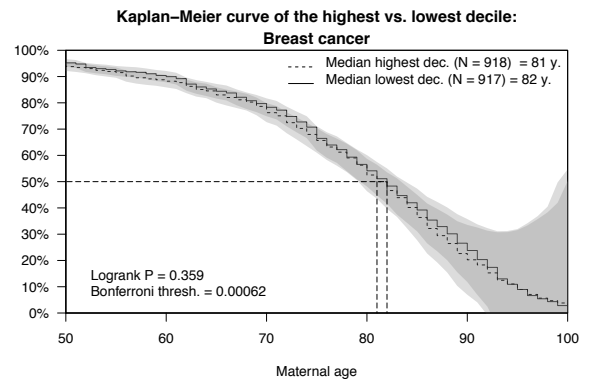
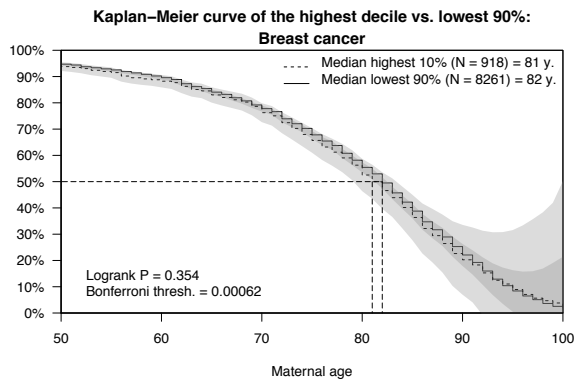
d



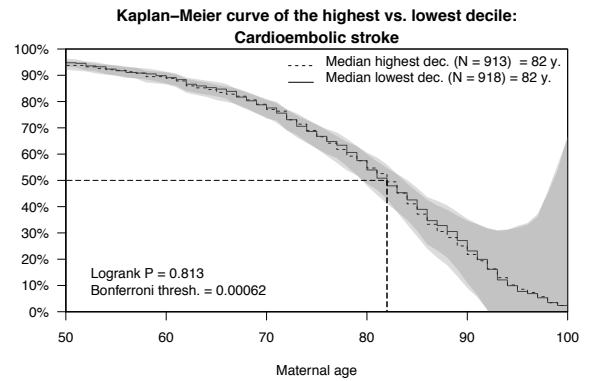
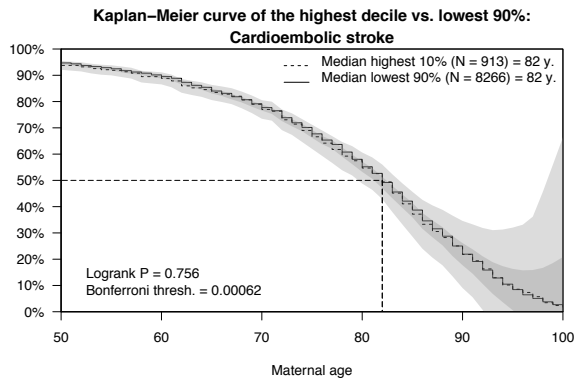
e



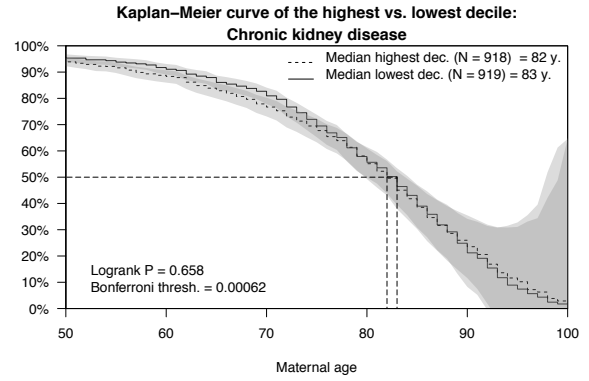
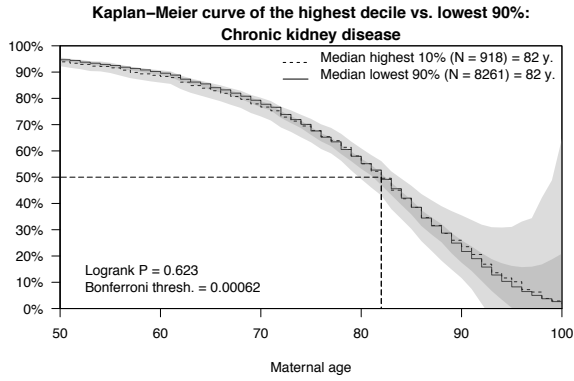
f



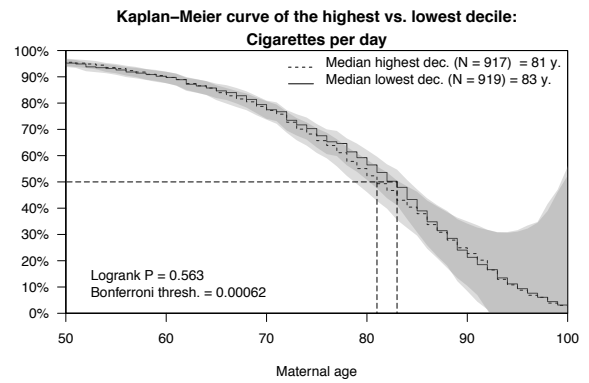
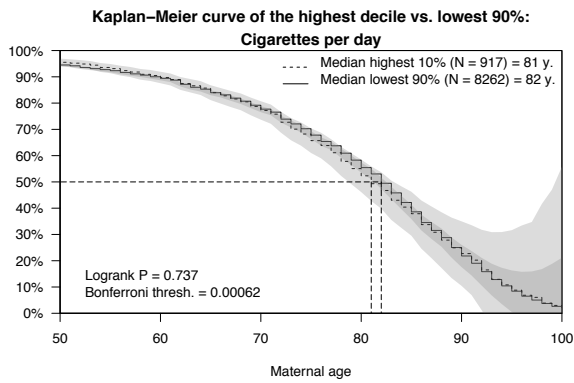
g



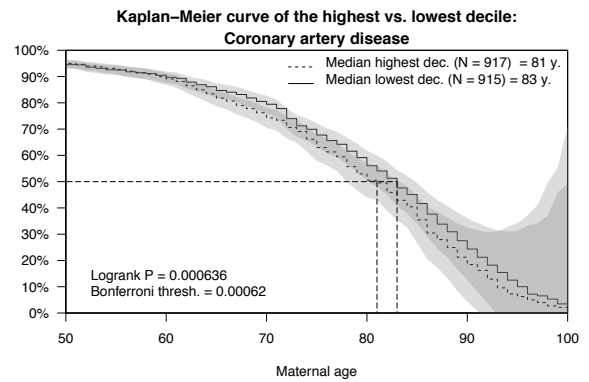
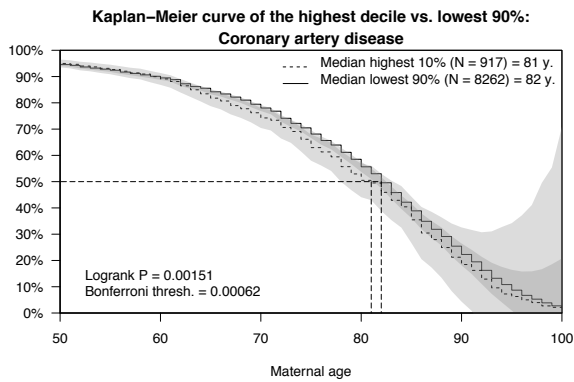
h



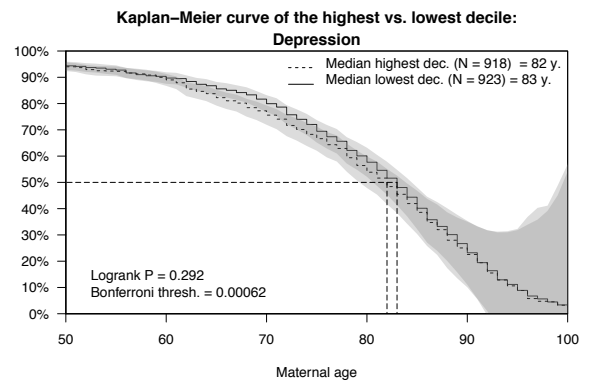
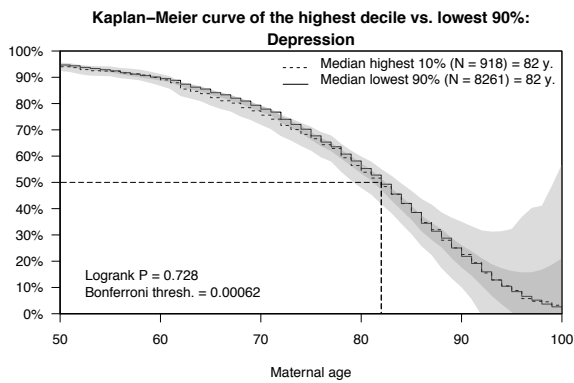
i



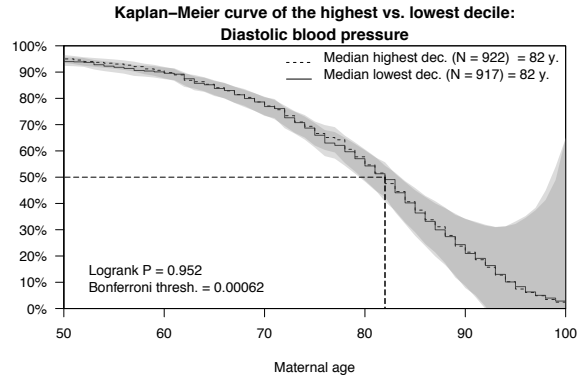
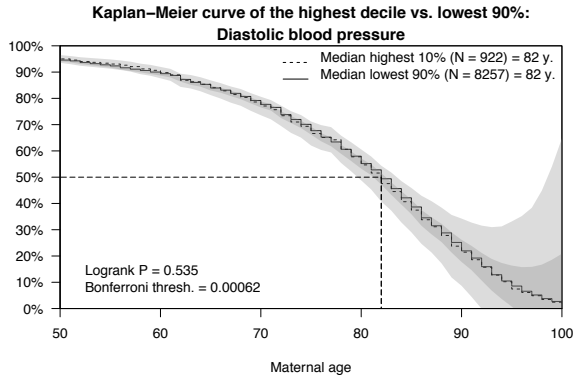
j



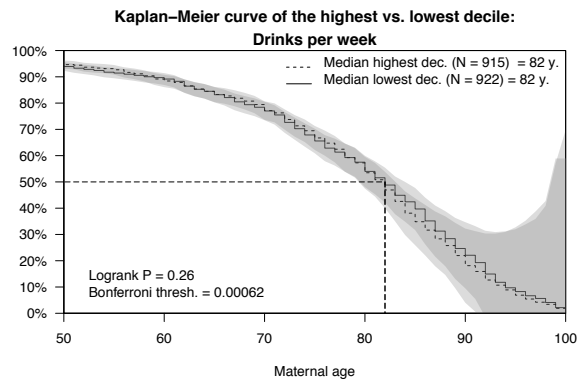
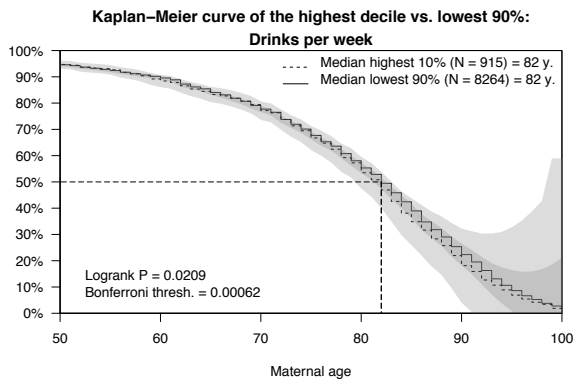
k



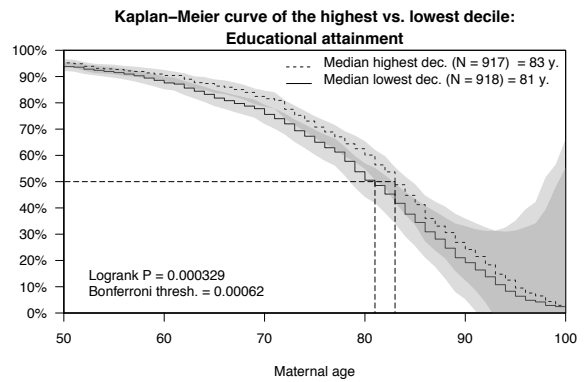
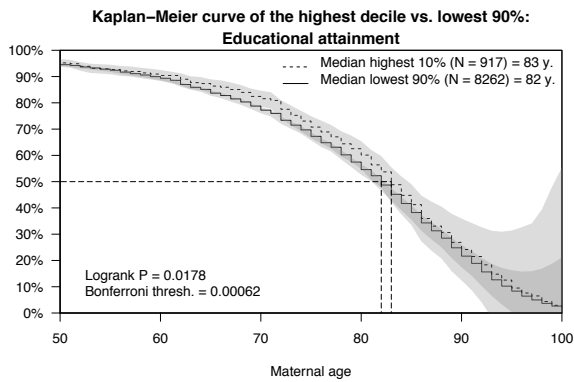
l



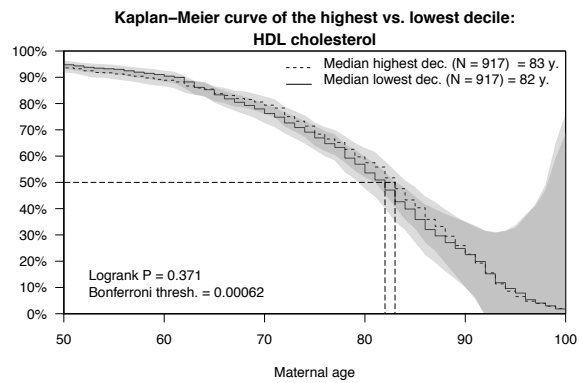
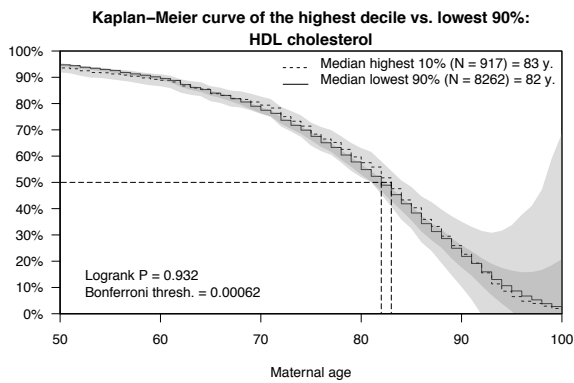
m



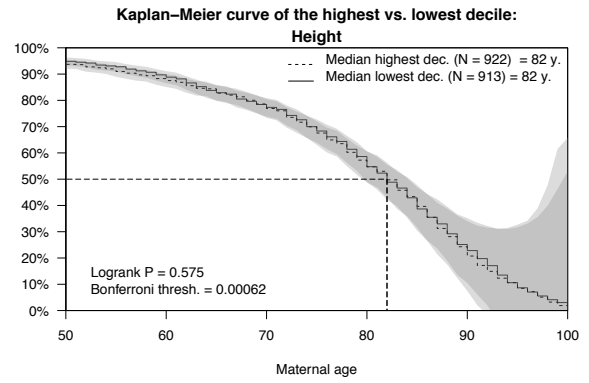
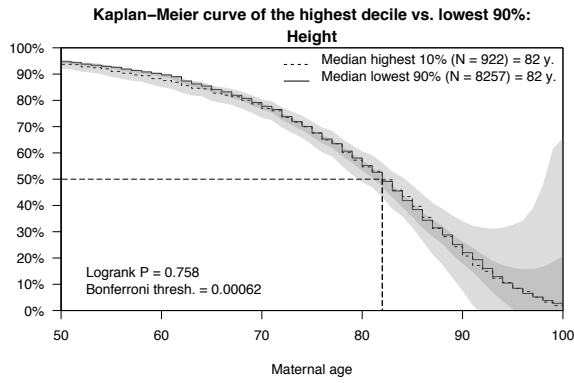
n



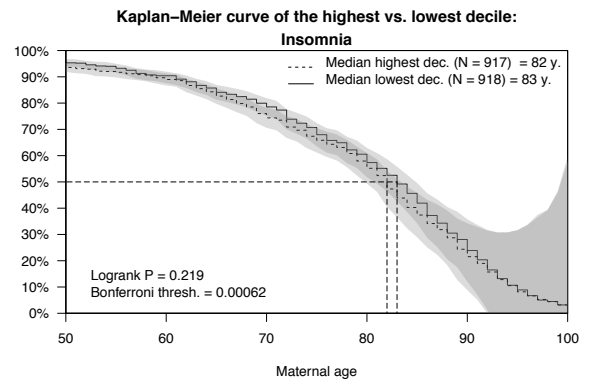
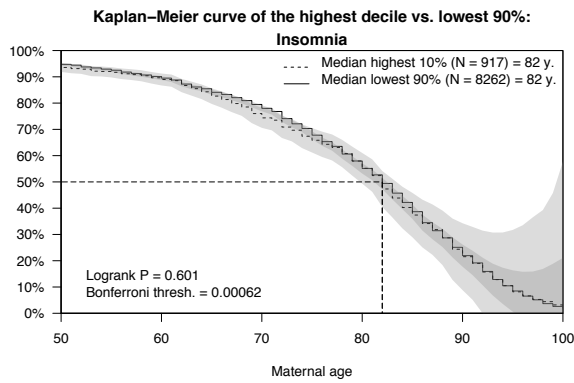
o



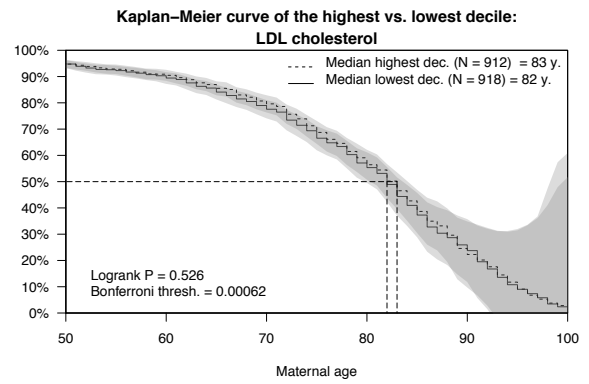
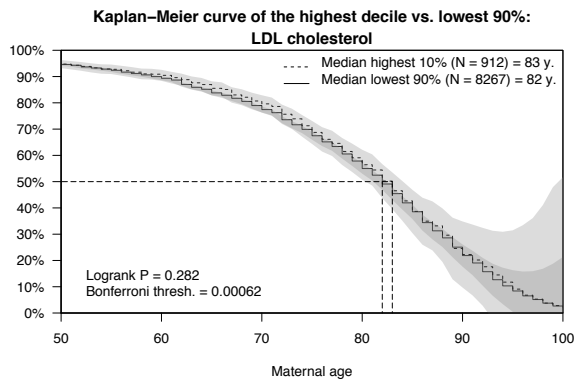
p



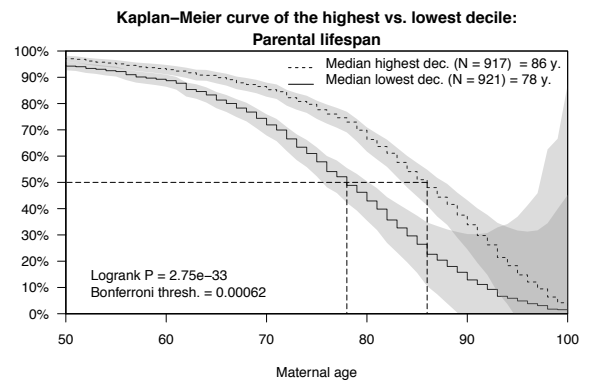
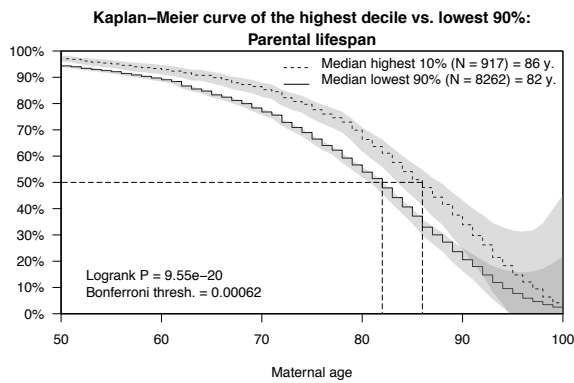
q



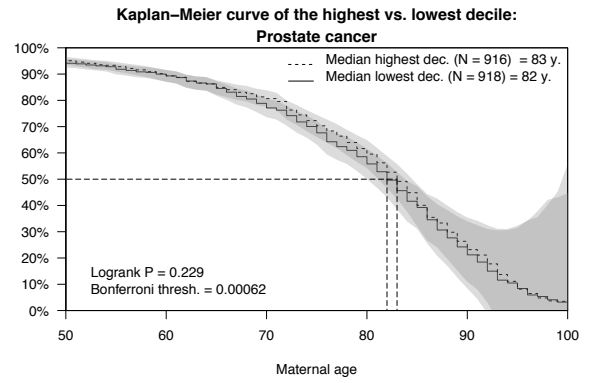
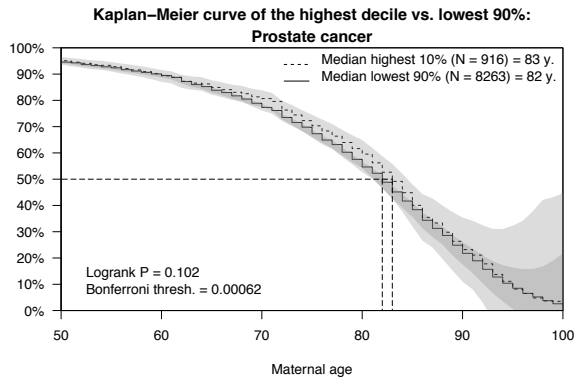
r



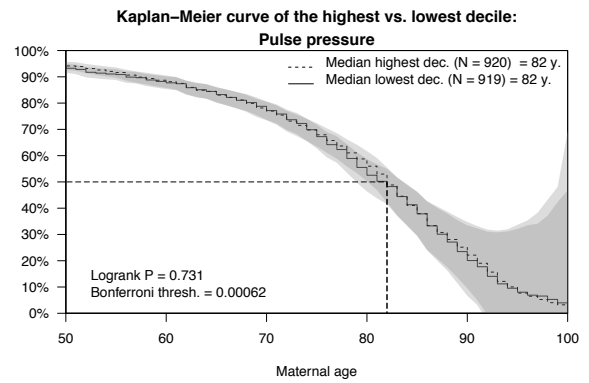
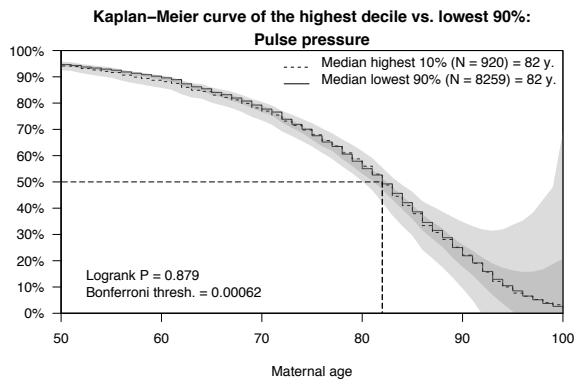
s



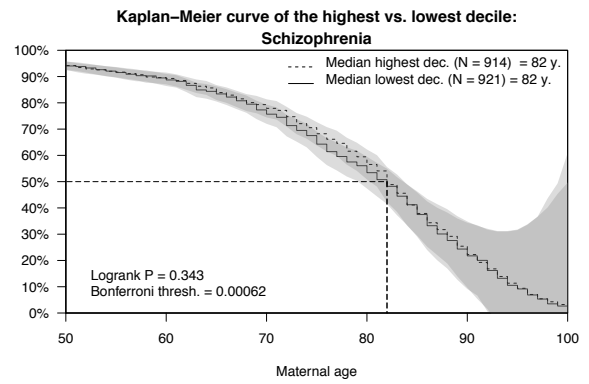
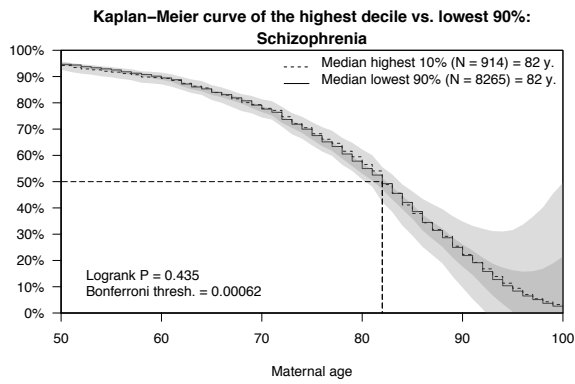
t



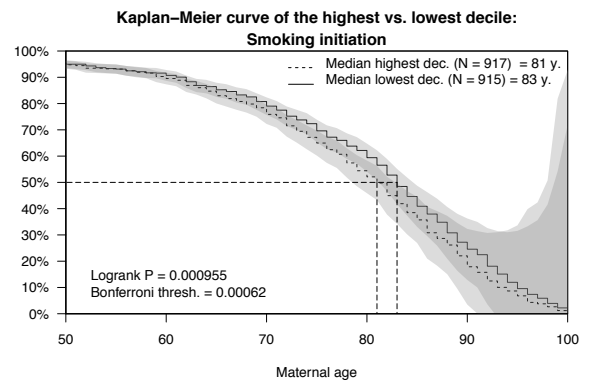
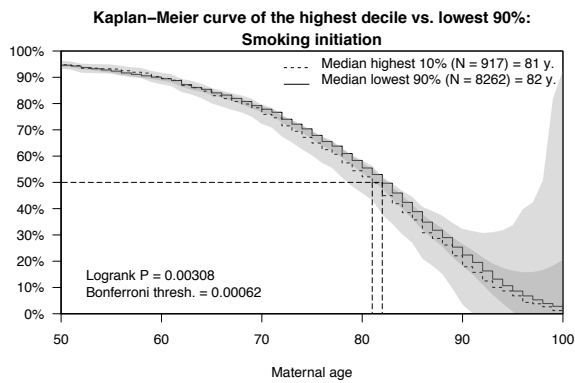
u



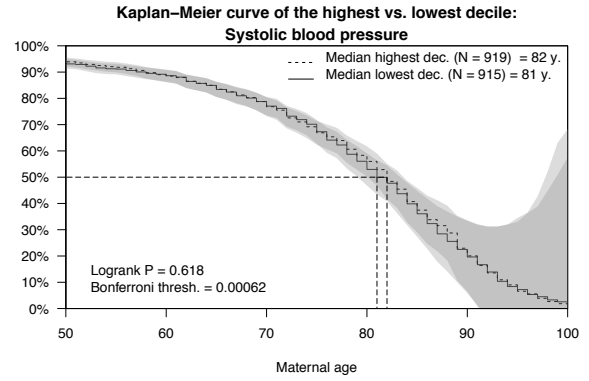
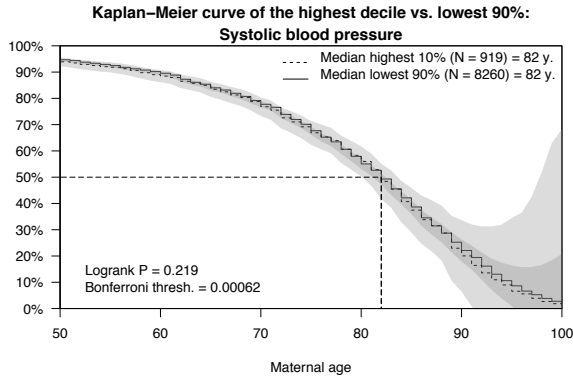
v



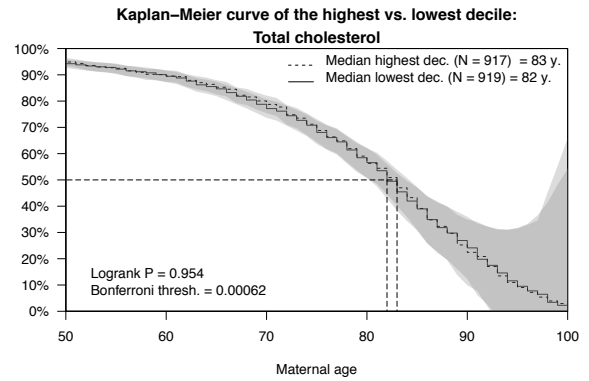
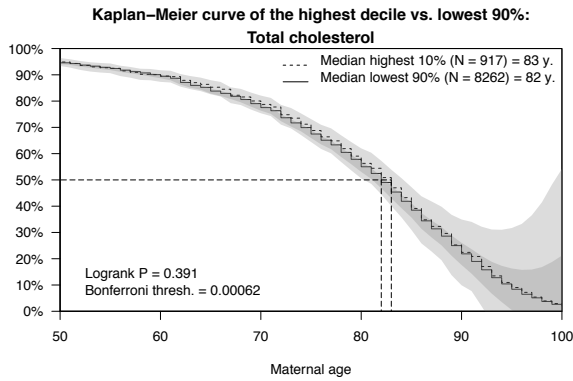
x



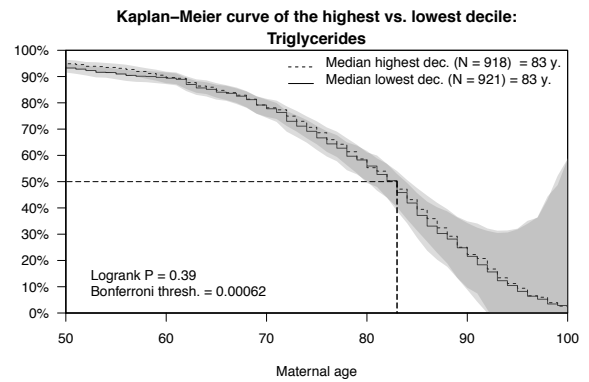
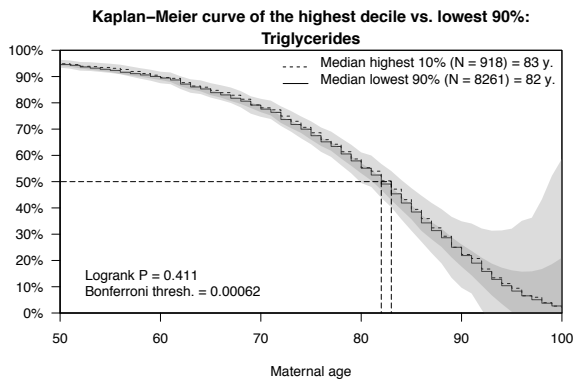
y



z

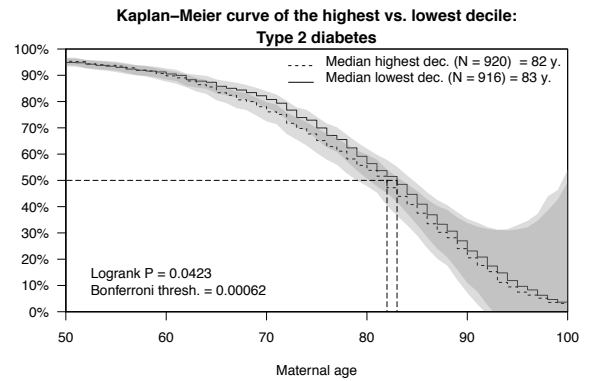
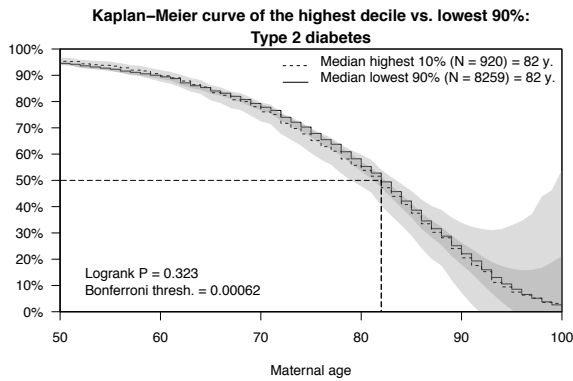


aa



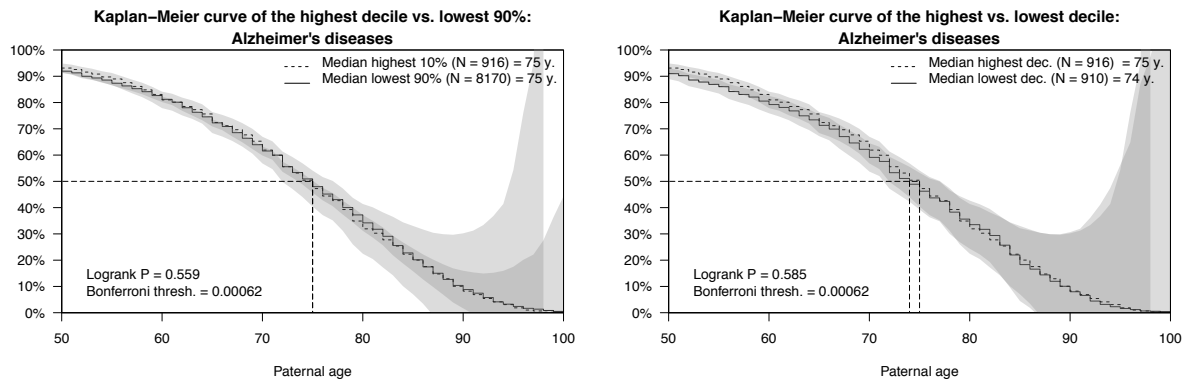
b

b

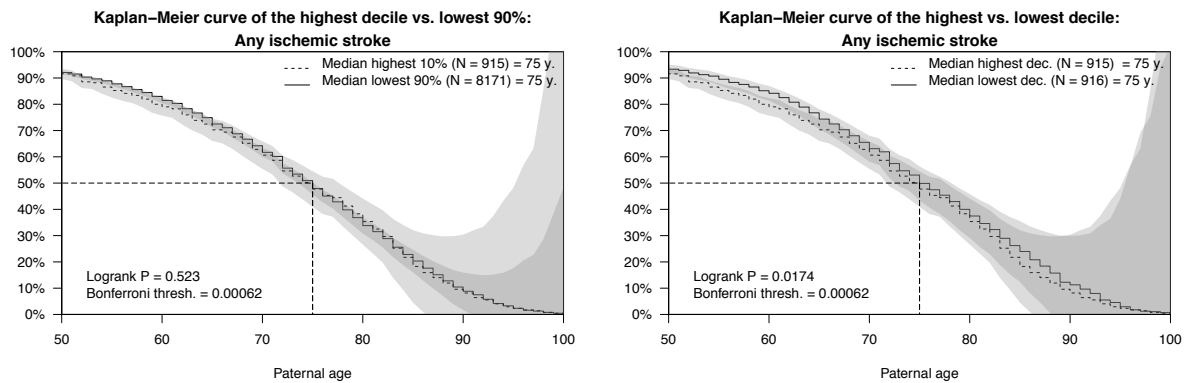


Supplementary Figure 5. Univariate survival analysis of paternal survival. For each polygenic score, we performed two comparisons of stratified survival functions: the first comparison (left column) was stratified by the top versus lower nine deciles of the polygenic score distribution, and the second comparison (right column) was stratified by the top versus bottom decile. The dashed lines display the median survival in the two strata. The logrank P value indicates whether the survival functions (not the median) of the two strata in each comparison are different. The grey areas are 95% confidence intervals. The Bonferroni-corrected P value threshold is equal to $0.05/81$, corrected for testing 27 traits across the respondents, and their mothers and fathers; and should be considered conservative.

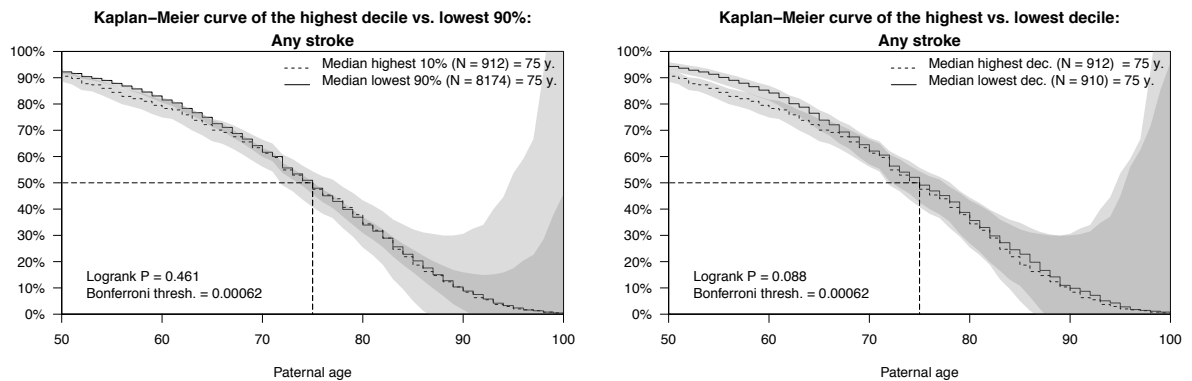
a



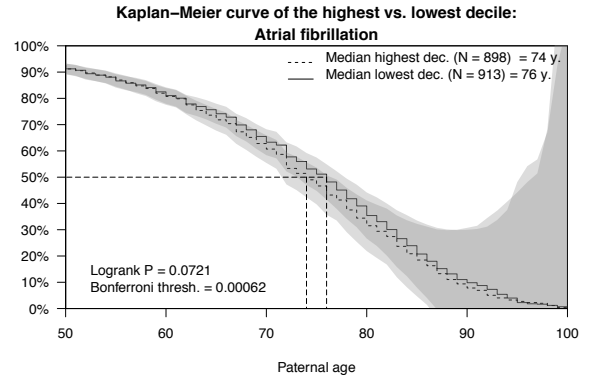
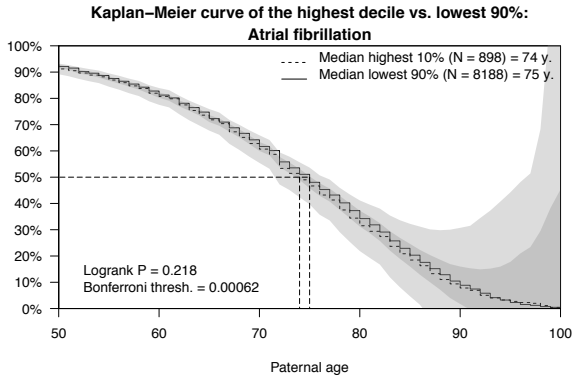
b



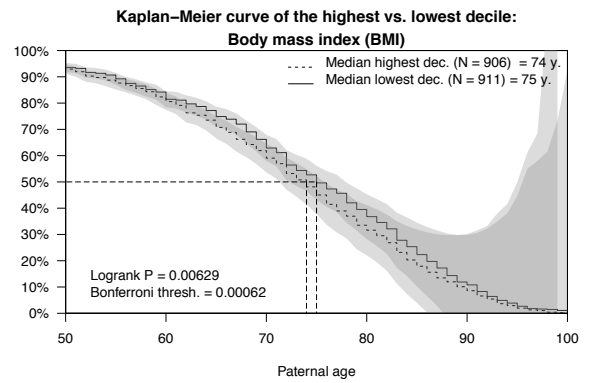
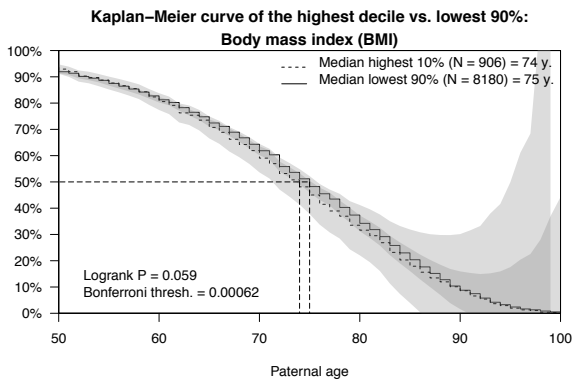
c



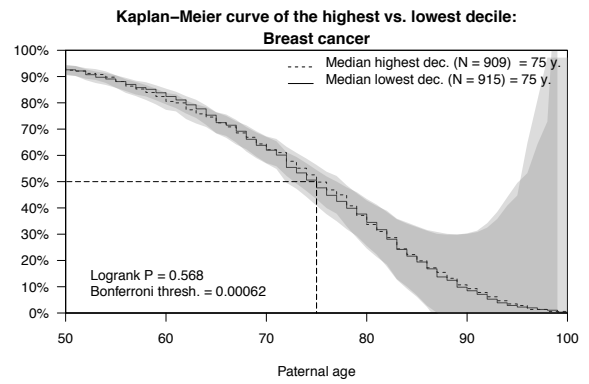
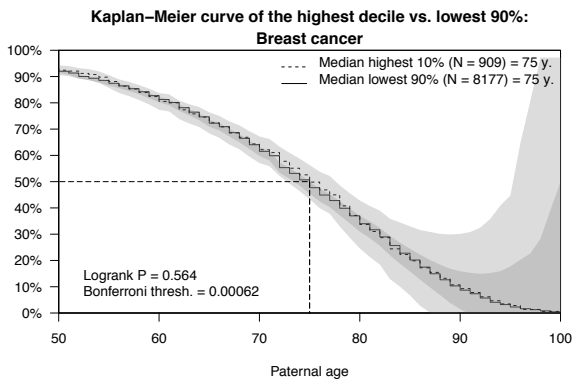
d



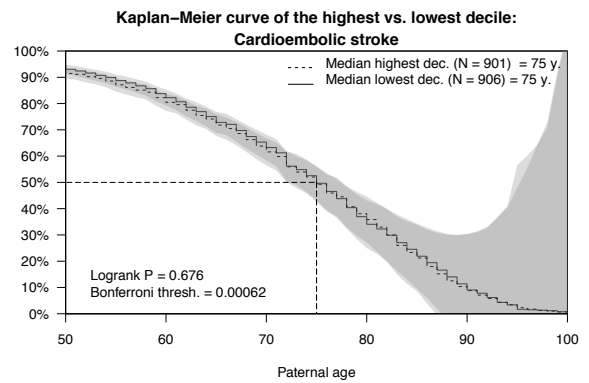
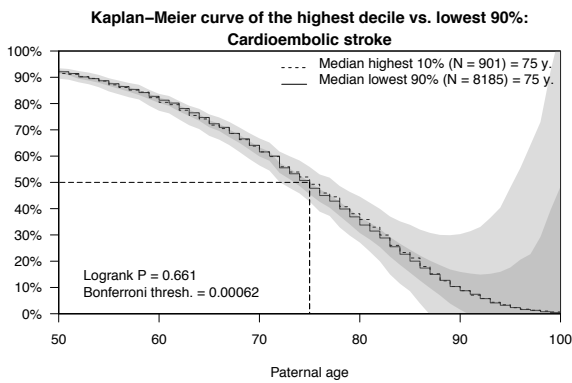
e



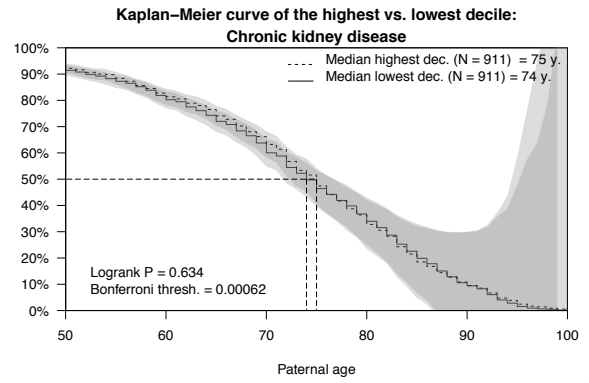
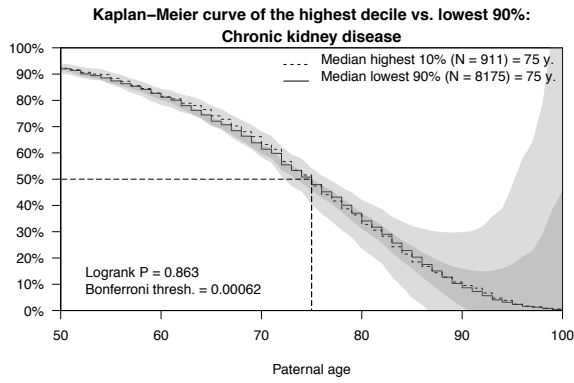
f



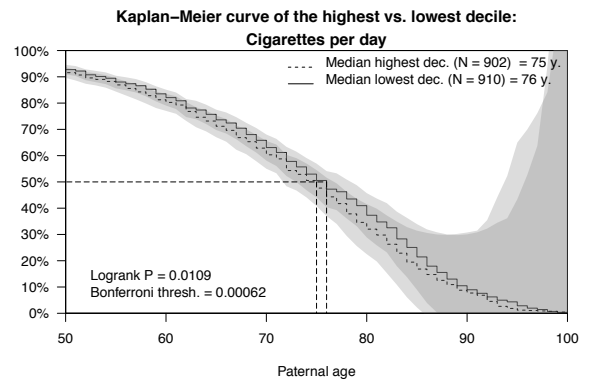
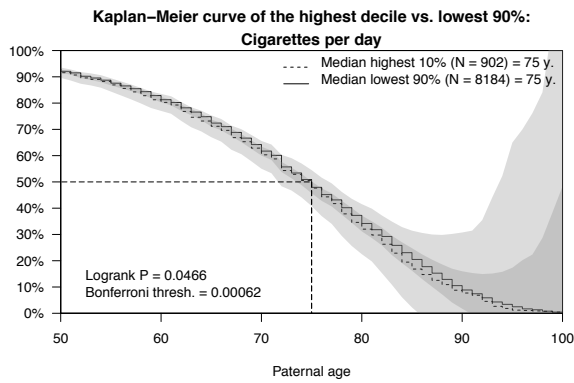
g



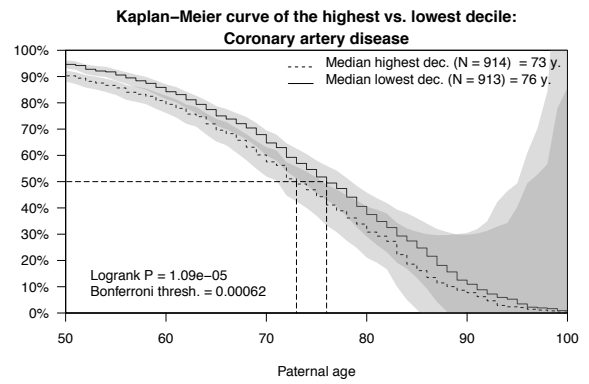
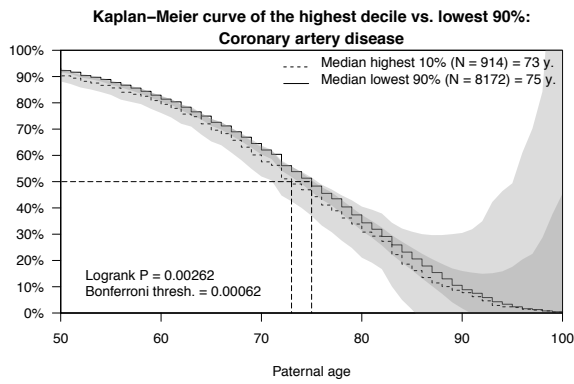
h



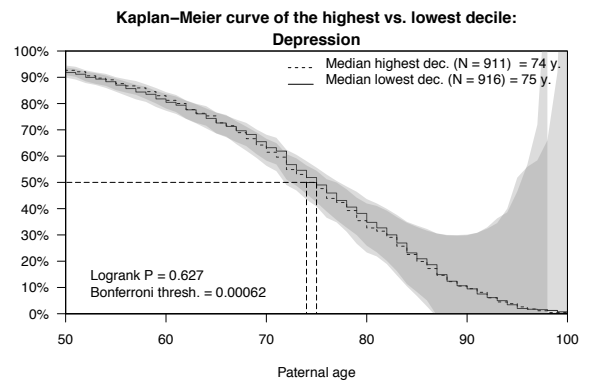
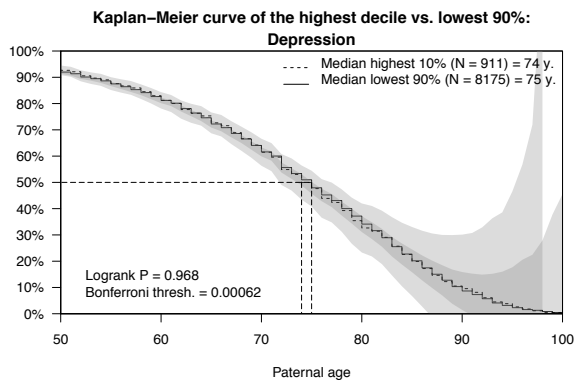
i



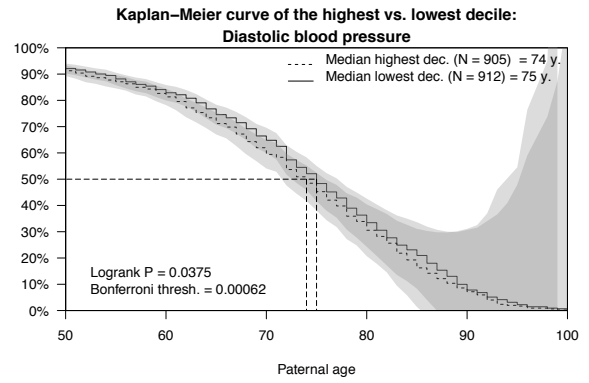
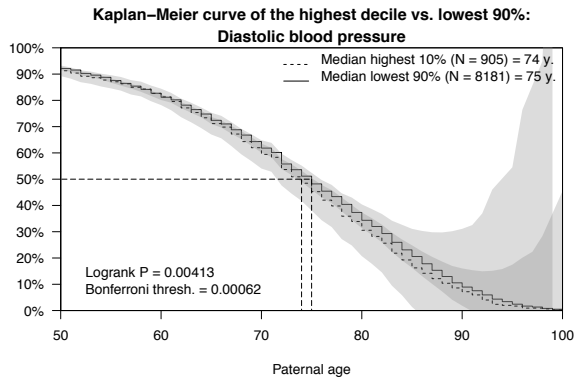
j



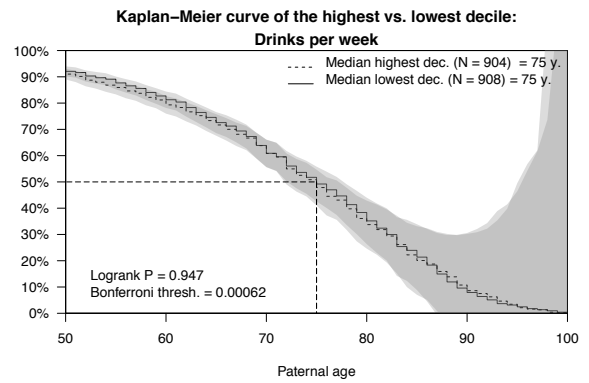
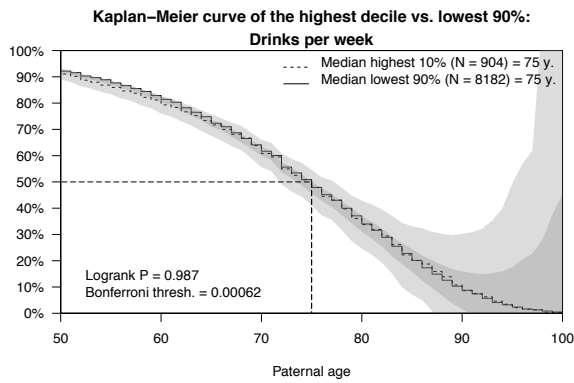
k



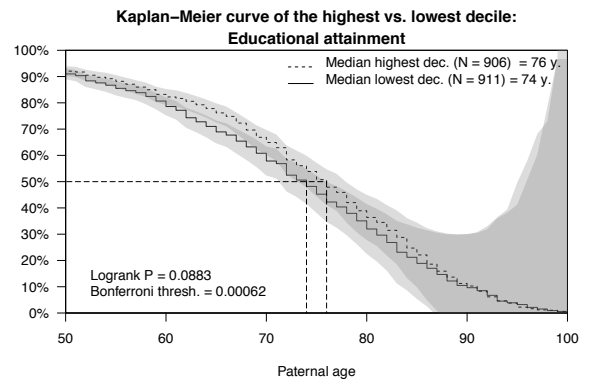
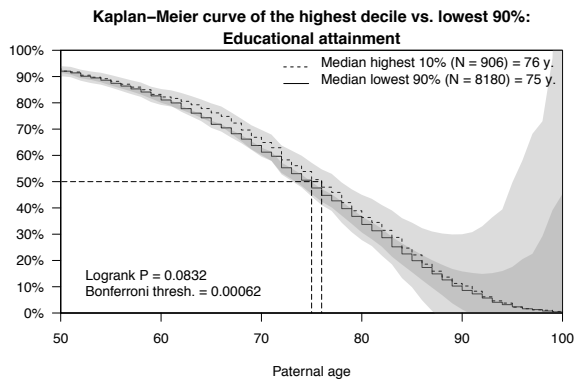
l



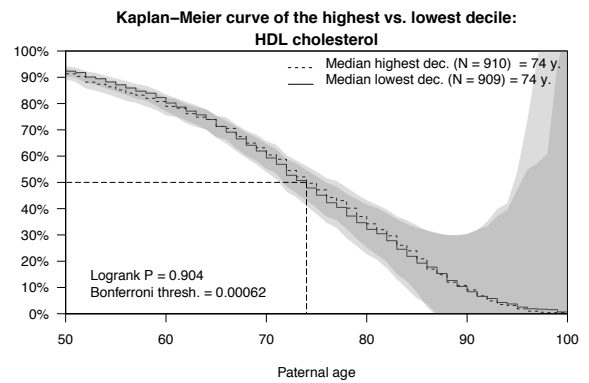
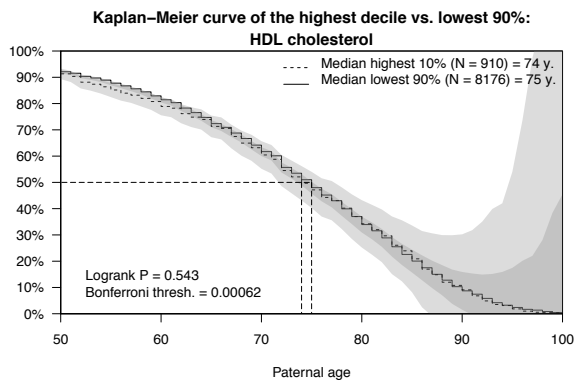
m



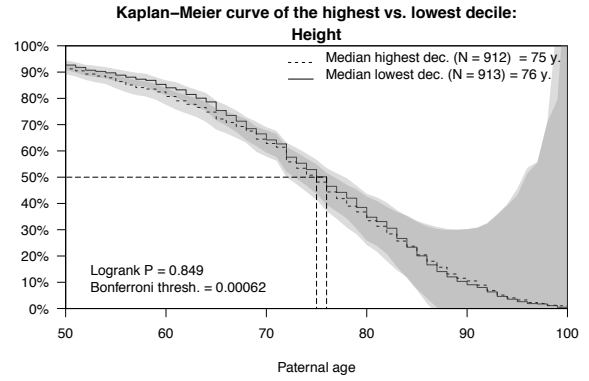
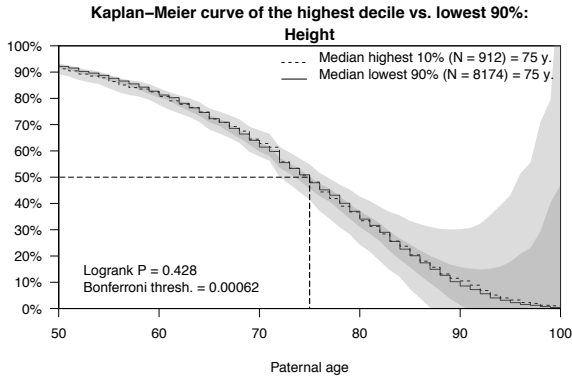
n



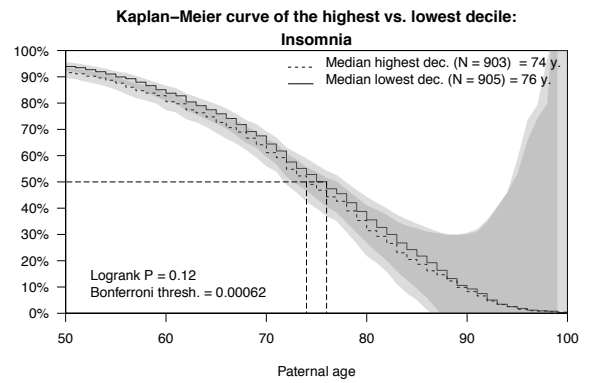
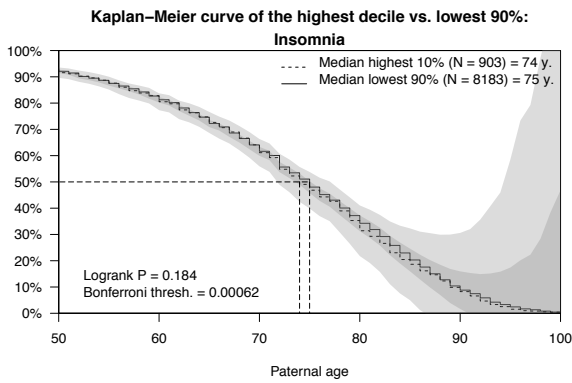
o



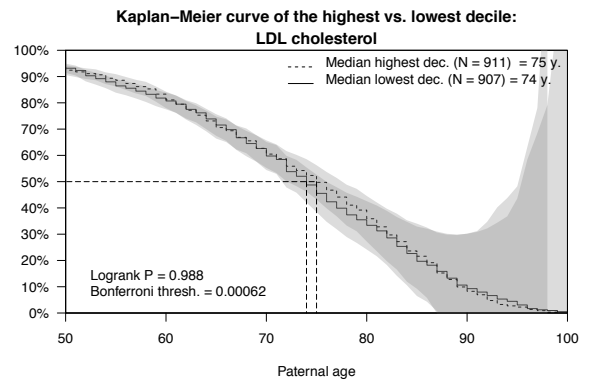
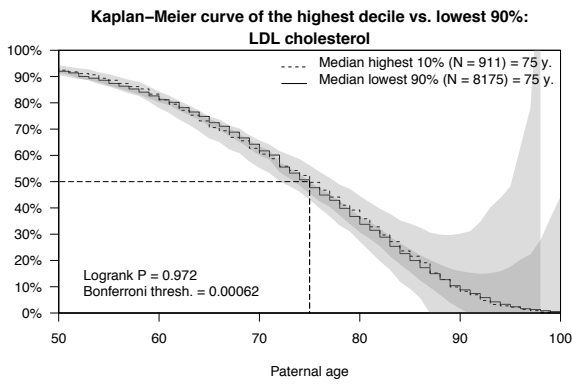
P



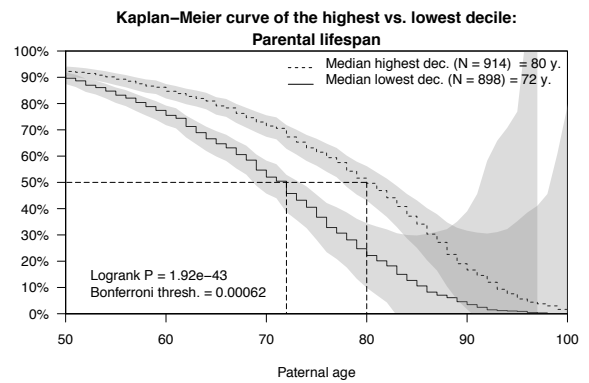
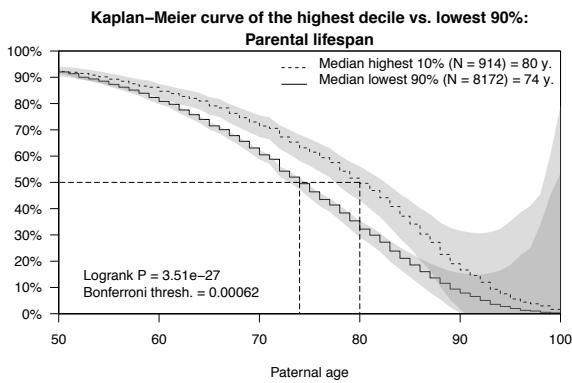
Q



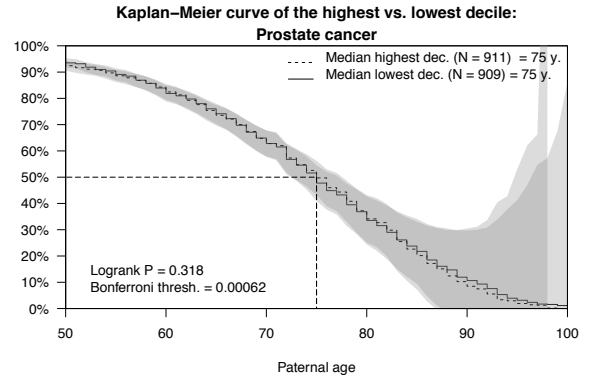
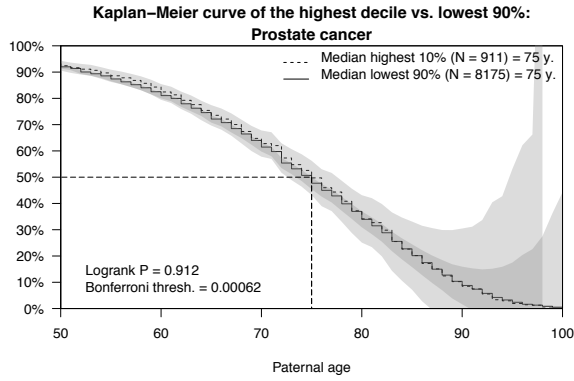
R



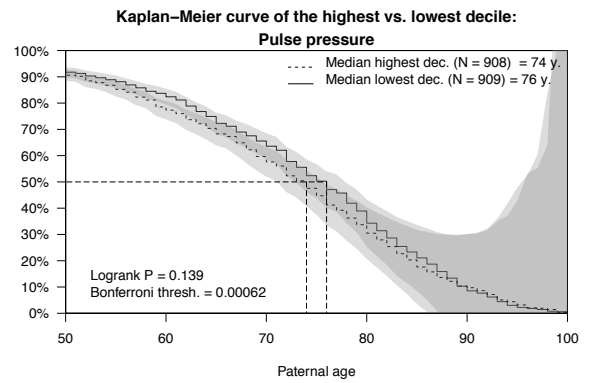
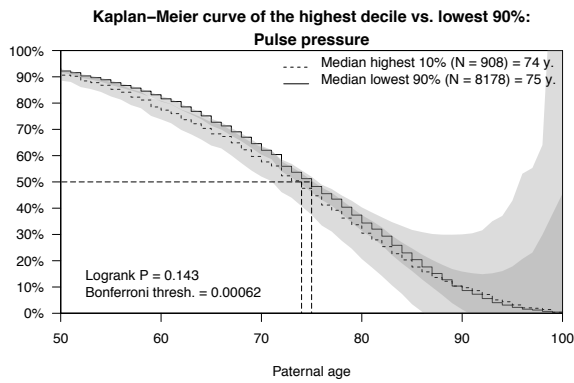
S



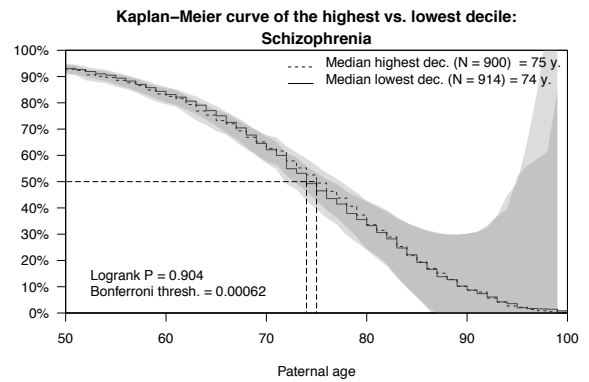
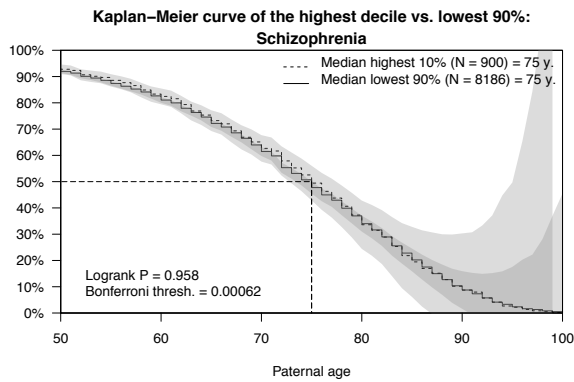
t



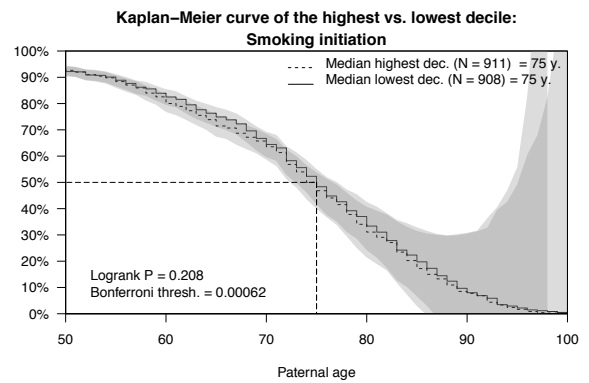
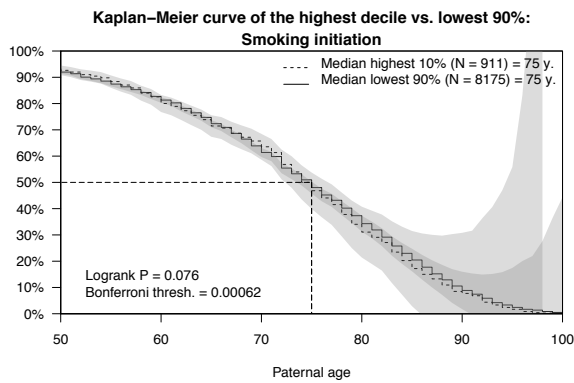
u



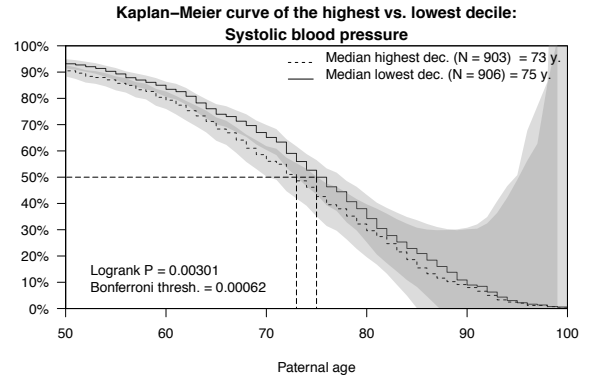
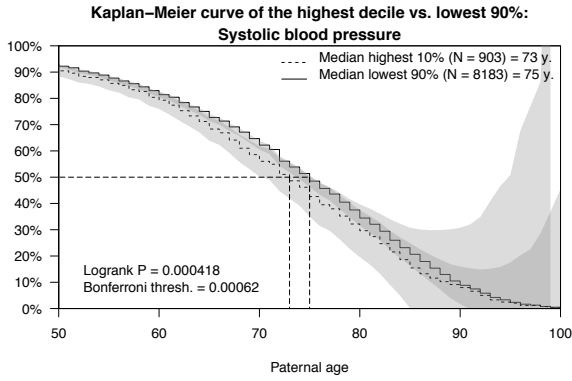
v



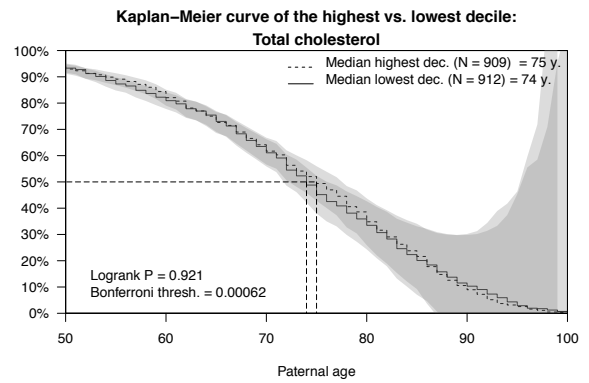
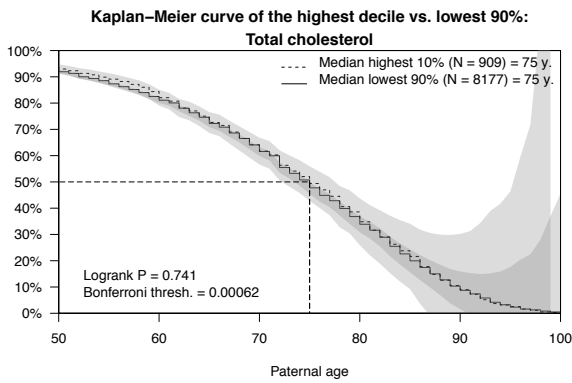
x



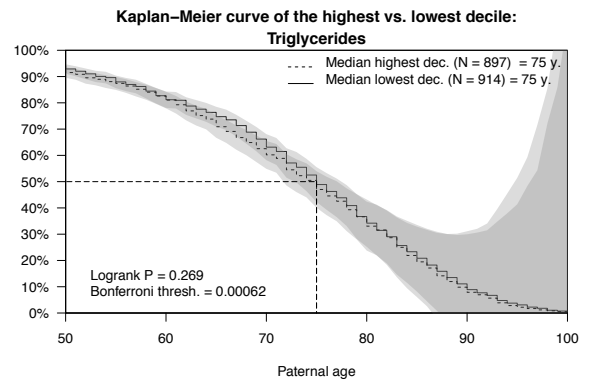
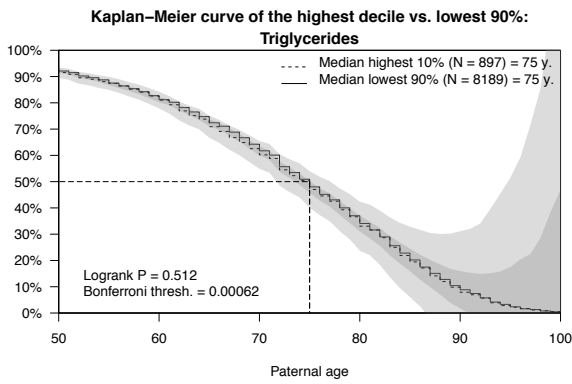
y



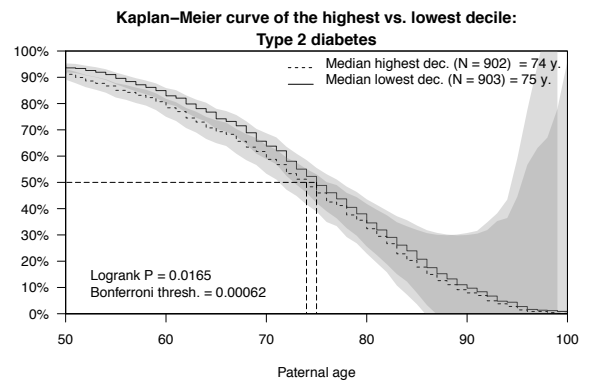
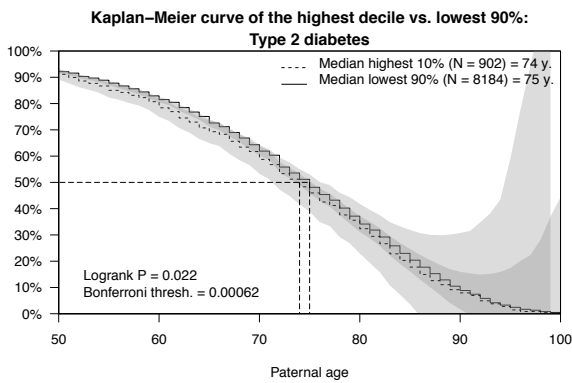
z



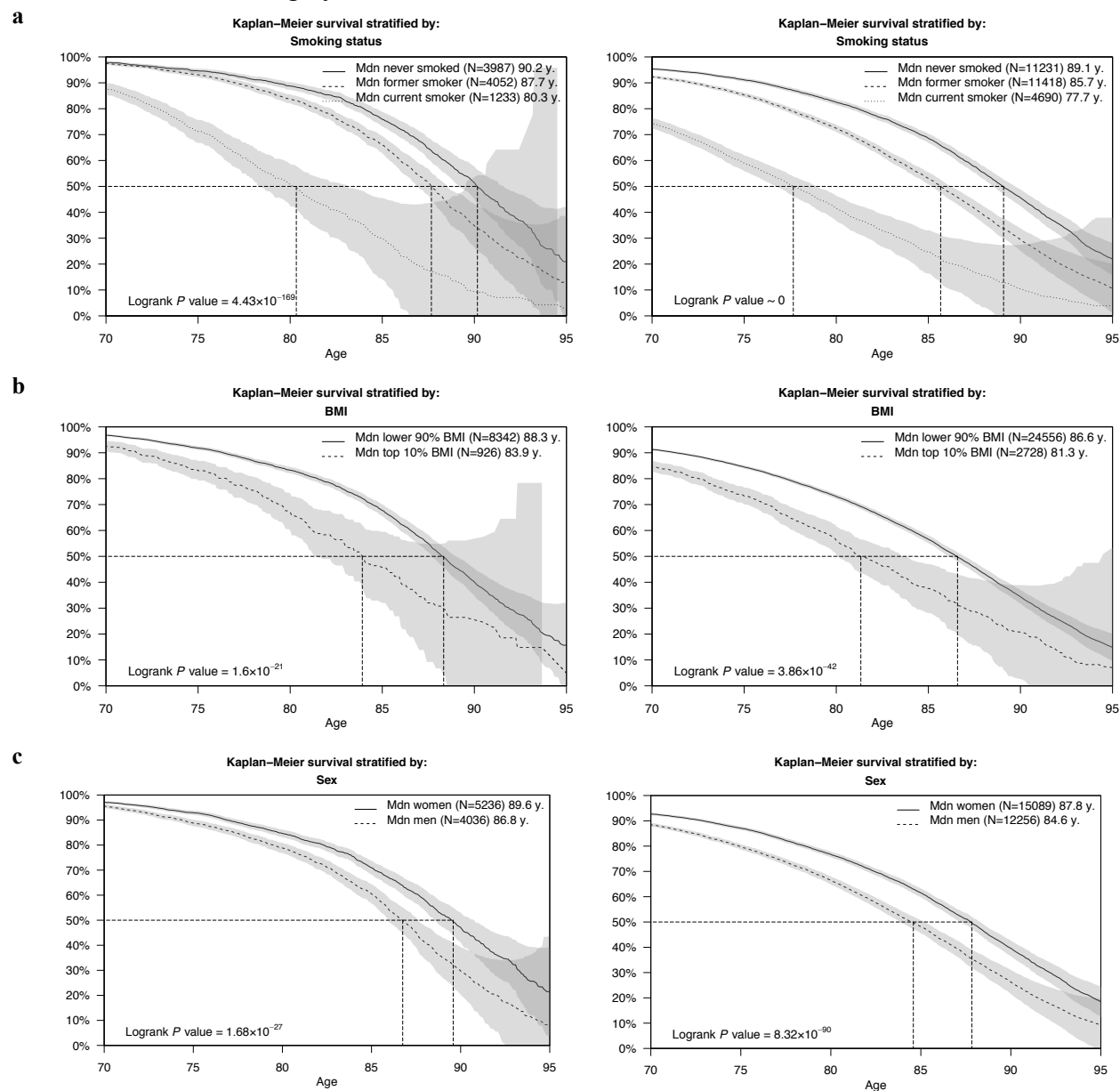
aa



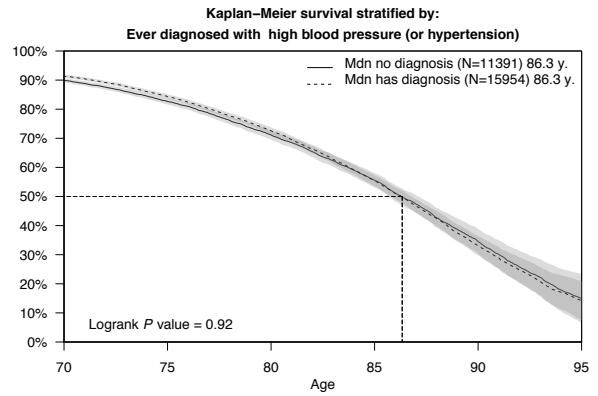
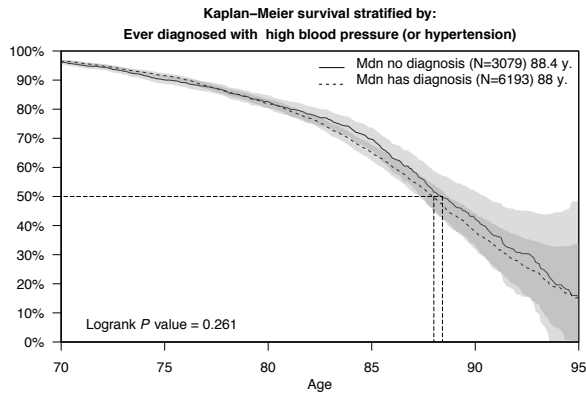
b
b



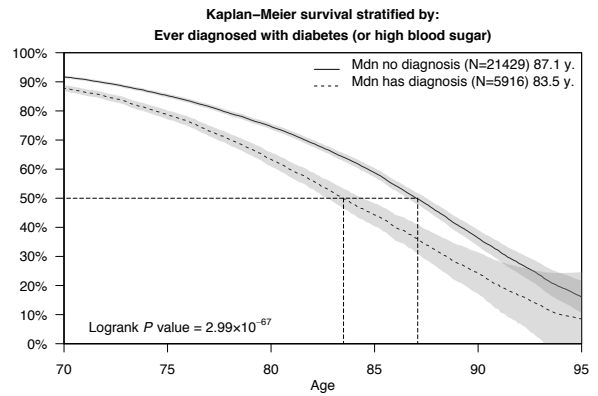
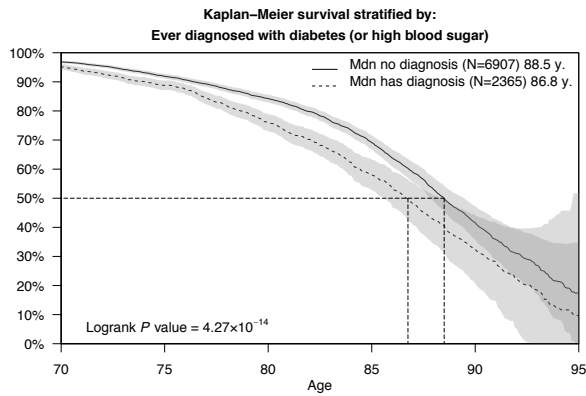
Supplementary Figure 6. Kaplan-Meier survival functions stratified by conventional actuarial risk factors. We estimated Kaplan-Meier survival functions stratified by the following conventional actuarial risk factors: (panel **a**) smoking status; (panel **b**) body mass index (BMI); (panel **c**) sex; ever diagnosed with high blood pressure (panel **d**); ever diagnosed with diabetes (panel **e**); Ever diagnosed with cancer (panel **f**); Ever diagnosed with chronic lung disease (panel **g**); Ever diagnosed with heart conditions (panel **h**); Ever diagnosed with stroke (panel **i**). The left-most column displays the analysis in our genotyped study sample, and the right-most column in all European HRS respondents ($N = 27,345$). The dashed lines display the median survival in the strata. The logrank P value indicates whether the survival functions (not the median) of the strata are different. The grey areas are 95% confidence intervals.



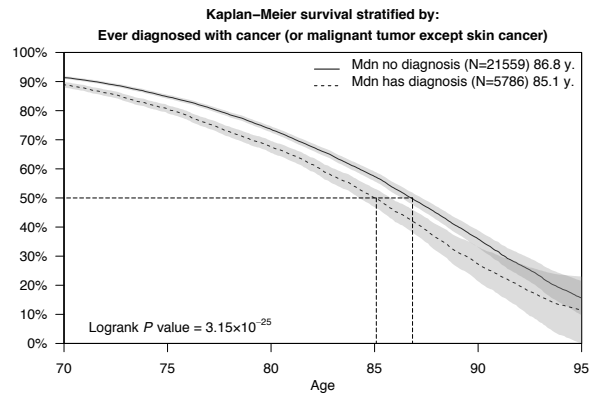
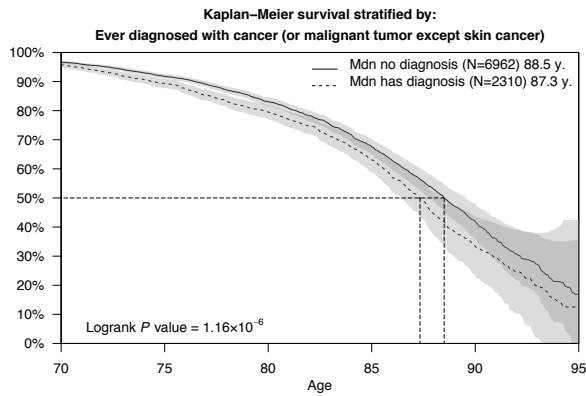
d



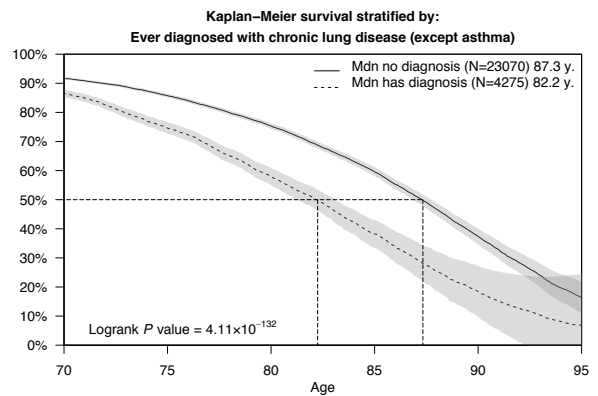
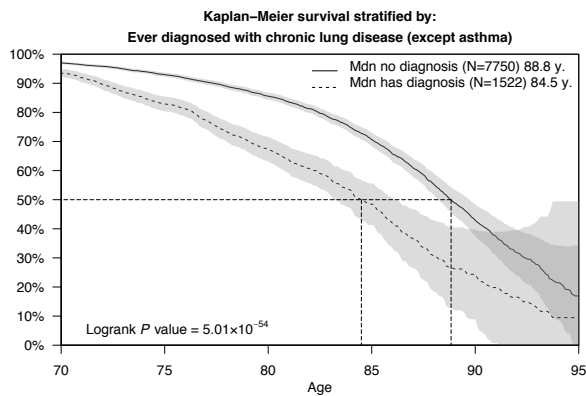
e



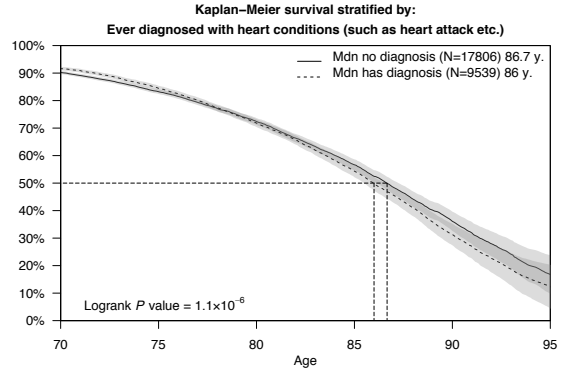
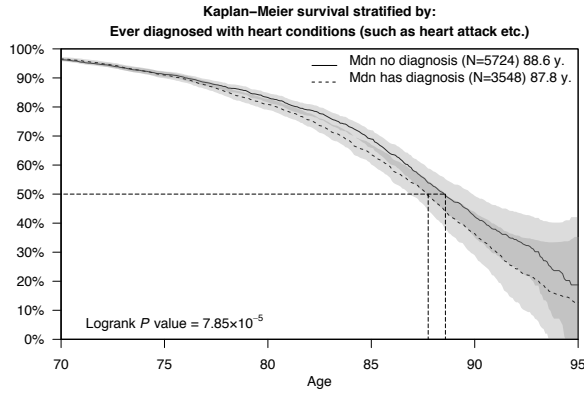
f



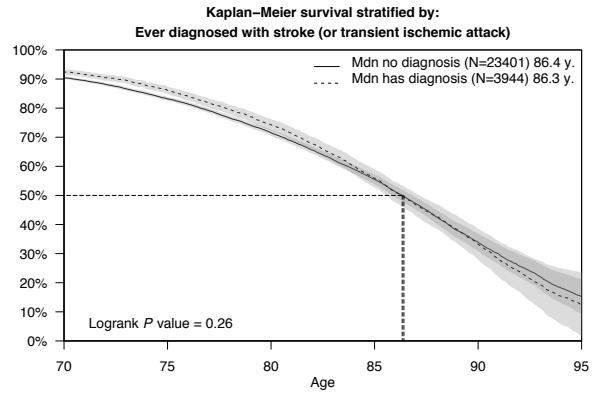
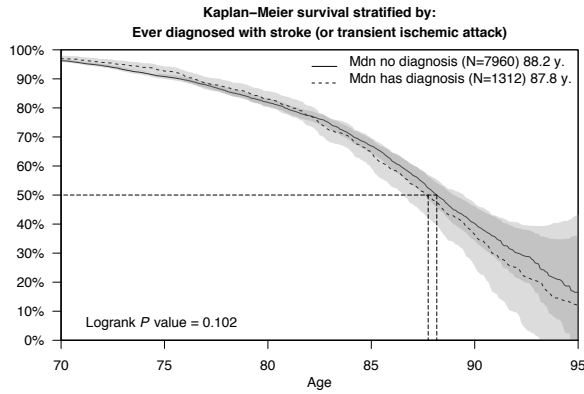
g



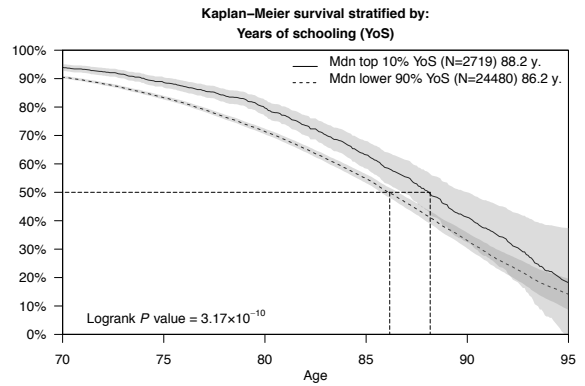
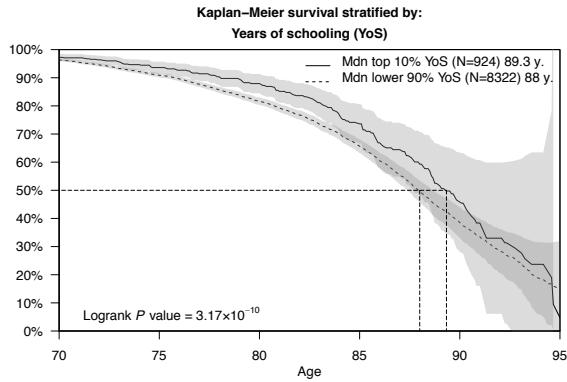
h



i



j



k

