

SUPPLEMENTARY INFORMATION

Supplementary Tables

Table S1.	Sources of contributing data for genetic analyses and association statistics.....	2
Table S2.	Binding specificity of protein C SOMAmer reagents.....	4
Table S3.	Selection of instrumental variables for Mendelian randomization analyses	5
Table S4.	Summary of the results from Mendelian randomization analyses.....	6
Table S5.	Characteristics of the participants in the <i>PROCR</i> -p.S219G recall-by-genotype study	7

Supplementary Figures

Figure S1.	Protein C levels and risk of cardiovascular diseases.....	8
Figure S2.	Results from Mendelian randomization analyses	10
Figure S3.	EPCR monoclonal antibody testing for flow cytometry	12
Figure S4.	Quantification of surface EPCR on HUVECs	12
Figure S5.	Quantification of surface EPCR on U937 cells	13
Figure S6.	Quantification of surface EPCR on monocytes and neutrophils	13
Figure S7.	Gene expression profiles of <i>PROCR</i> , <i>ITGB2</i> and <i>ITGAM</i>	14

Suppl. Table 1. Sources of contributing data for genetic analyses and association statistics. The data comprise the latest available GWAS summary statistics for a range of cardiovascular diseases and risk factors. All data were collected from participants of European ancestry. Abbreviations: PMID, PubMed identifier; RbG, recall-by-genotype study; UKBB, UK Biobank; SE, standard error; MAF, minor allele frequency; OR, odds ratio.

Source	PMID	Phenotype	Number of participants	Number of cases	Number of controls	Used for Phenome-scan	Used for HyPrColoc	Used for MR	Allele	MAF	P-value	OR/beta	SE
ARIC	20802025	Factor VII	10,140	–	–	No	Yes	No	rs867186-G	0.097	8.72E-20	0.050	0.005
ARIC	20802025	Protein C	8,911	–	–	Yes	Yes	Yes	rs867186-G	0.096	8.71E-237	0.455	0.014
Astle W	27863252	Mean platelet volume	173,480	–	–	Yes	No	No	rs867186-G	NA	6.95E-01	-0.002	0.006
Astle W	27863252	Monocyte count	173,480	–	–	Yes	No	No	rs867186-G	NA	4.77E-01	0.004	0.006
Astle W	27863252	Platelet count	173,480	–	–	Yes	No	No	rs867186-G	NA	1.65E-01	0.009	0.006
Astle W	27863252	Neutrophil count	173,480	–	–	Yes	No	No	rs867186-G	NA	7.32E-03	0.017	0.006
CHARGE	30586737	Factor VIII	32,610	–	–	Yes	No	No	rs867186-G	0.103	1.80E-01	-0.017	0.004
CHARGE	28053049	Factor XI	16,169	–	–	Yes	No	No	rs867186-G	0.110	8.10E-02	0.028	0.004
CHARGE	30642921	Factor VII	23,434	–	–	Yes	No	No	rs867186-G	0.104	3.25E-64	0.256	0.003
GLGC	24097068	HDL cholesterol	183,651	–	–	Yes	No	No	rs867186-G	0.098	4.19E-01	-0.004	0.006
GLGC	24097068	LDL cholesterol	169,627	–	–	Yes	No	No	rs867186-G	0.098	5.32E-01	0.000	0.006
GLGC	24097068	Total cholesterol	183,793	–	–	Yes	No	No	rs867186-G	0.098	7.28E-01	0.001	0.006
GLGC	24097068	Triglycerides	174,314	–	–	Yes	No	No	rs867186-G	0.098	6.96E-01	0.003	0.006
INVENT	25772935	Venous thromboembolism	60,139	7,507	52,632	Yes	No	No	rs867186-G	0.101	1.21E-04	0.142	0.037
Mahajan A	30297969	Type 2 diabetes	298,957	48,286	250,671	Yes	No	No	rs867186-G	0.109	6.88E-01	-0.013	0.012
MEGASTROKE	29531354	Cardioembolic stroke	347,338	8,092	339,246	Yes	No	Yes	rs867186-G	0.103	1.96E-02	-0.074	0.032
MEGASTROKE	29531354	Any stroke	504,077	63,647	440,430	Yes	No	Yes	rs867186-G	0.101	1.77E-03	-0.044	0.014
MEGASTROKE	29531354	Ischemic stroke	485,144	57,270	427,874	Yes	No	Yes	rs867186-G	0.100	3.60E-03	-0.044	0.015
MEGASTROKE	29531354	Large-artery stroke	238,380	6,080	232,300	Yes	No	Yes	rs867186-G	0.101	4.75E-01	-0.028	0.039
MEGASTROKE	29531354	Small-vessel stroke	284,377	11,071	273,306	Yes	No	Yes	rs867186-G	0.089	6.38E-01	0.015	0.032
RbG	<i>This study</i>	Activated protein C	52	–	–	Yes	No	No	rs867186-G	NA	4.23E-01	-0.135	0.167
RbG	<i>This study</i>	Thrombin/antithrombin-III	51	–	–	Yes	No	No	rs867186-G	NA	4.59E-01	-0.127	0.170
RbG	<i>This study</i>	Protein C activity	51	–	–	Yes	No	No	rs867186-G	NA	2.05E-04	0.595	0.148
RbG	<i>This study</i>	sEPCR	52	–	–	Yes	No	No	rs867186-G	NA	3.29E-22	1.097	0.065
Suhre K	28240269	Factor IX	1,000	–	–	Yes	No	No	rs867186-G	NA	6.73E-02	-0.122	0.067
Suhre K	28240269	Protein S	1,000	–	–	Yes	No	No	rs867186-G	NA	2.94E-01	-0.073	0.069
Suhre K	28240269	Factor XI	1,000	–	–	Yes	No	No	rs867186-G	NA	8.79E-01	-0.010	0.067
Suhre K	28240269	Fibrinogen	1,000	–	–	Yes	No	No	rs867186-G	NA	9.81E-01	-0.002	0.069
Suhre K	28240269	Factor V	1,000	–	–	Yes	No	No	rs867186-G	NA	5.91E-01	0.037	0.070
Suhre K	28240269	Factor VII	1,000	–	–	Yes	No	No	rs867186-G	NA	8.85E-02	0.118	0.069
Suhre K	28240269	Protein C	1,000	–	–	Yes	No	No	rs867186-G	NA	5.45E-38	0.838	0.062
Sun B	29875488	Factor VIII	3,301	–	–	Yes	No	No	rs867186-G	NA	6.46E-02	-0.082	0.045
Sun B	29875488	Antithrombin-III	3,301	–	–	Yes	No	No	rs867186-G	NA	9.12E-01	-0.005	0.045
Sun B	29875488	Tissue factor	3,301	–	–	Yes	No	No	rs867186-G	NA	9.77E-01	0.001	0.045

Sun B	29875488	Prothrombin	3,301	-	-	Yes	No	No	rs867186-G	NA	6.03E-02	0.084	0.045
Sun B	29875488	Factor X	3,301	-	-	Yes	No	No	rs867186-G	NA	5.13E-02	0.087	0.045
Sun B	29875488	Factor Xa	3,301	-	-	Yes	No	No	rs867186-G	NA	8.71E-03	0.117	0.045
Sun B	29875488	Activated protein C	3,301	-	-	Yes	Yes	Yes	rs867186-G	NA	8.71E-09	0.256	0.044
UKBB	NA	Aortic aneurysm	367,643	1,295	366,348	Yes	No	No	rs867186-G	0.088	5.09E-01	-0.046	0.070
UKBB	NA	Hypertension	367,643	119,500	248,143	Yes	No	No	rs867186-G	0.088	6.88E-03	-0.024	0.009
UKBB	NA	Pulmonary embolism	367,643	5,097	362,546	Yes	No	Yes	rs867186-G	0.088	5.52E-04	0.122	0.035
UKBB	NA	Venous thromboembolism	367,643	12,719	354,924	Yes	No	Yes	rs867186-G	0.088	1.87E-09	0.136	0.023
UKBB	NA	Deep venous thrombosis	367,643	8,891	358,752	Yes	Yes	Yes	rs867186-G	0.088	2.62E-10	0.170	0.027
van der Harst P	29212778	Coronary artery disease	547,261	122,733	424,528	Yes	Yes	Yes	rs867186-G	0.103	6.84E-12	-0.057	0.008

Suppl. Table 2. Binding specificity of protein C SOMAmer reagents. We measured the binding activity (K_d value) of the three pivotal SOMAmer reagents targeting protein C to each of the commercially available proteins, i.e. protein C, APC, sEPCR, thrombin, factor VIIa, protein S, factor V and thrombomodulin. The SOMAmers were '2961-1_2' (annotated as 'Protein C'), '3758-63_3' (annotated as 'APC') and '3758-68_3' (annotated as 'APC'). We confirmed that '2961-1_2' binds both protein C and APC while SOMAmers '3758-63_3' and '3758-68_3' specifically bind APC. None of the three SOMAmers showed binding activity for the other proteins tested.

We then tested whether sEPCR and thrombomodulin interfere with the SOMAmer reagent binding to protein C or whether sEPCR, protein S and factor VIIa interfere with the SOMAmer reagents binding to APC. The results indicate sEPCR and thrombomodulin do not compete with '2961-1_2' for binding to protein C, and sEPCR, protein S and factor VIIa do not compete with '2961-1_2', '3758-63_3' or '3758-68_3' for binding to APC.

	2961-1_2	3758-63_3	3758-68_3
Protein C	$2.3 \times 10^{-8} \text{ M}$	$> 1.0 \times 10^{-7} \text{ M}$	$> 1.0 \times 10^{-7} \text{ M}$
APC	$2.1 \times 10^{-8} \text{ M}$	$1.2 \times 10^{-8} \text{ M}$	$6.8 \times 10^{-9} \text{ M}$
sEPCR	<i>no binding at protein concentrations up to $1.0 \times 10^{-7} \text{ M}$</i>		
Thrombin			
Factor VIIa			
Protein S			
Factor V			
Thrombomodulin			

Suppl. Table 3. Selection of instrumental variables for Mendelian randomization analyses. The tables provides further details on the instrumental variables that we selected for the construction of a multi-allelic genetic score at the *PROCR* region to estimate the causal associations between PC/APC and cardiovascular outcomes (i.e. CAD and DVT) (Methods). Further information on the data sources for these analyses are provided in Suppl. Table 4. Abbreviations: chr, chromosome; SE, standard error; P-val, P-value; EAF, effect allele frequency.

SNP	Chr	Position (GRCh37)	Effect allele	Other allele	Exposure	Units	Sample size	EAF	β	SE	P-val	F-stat	Correct causal direction
rs867186	20	33764554	A	G	APC	SD	3,301	0.914	-0.256	0.044	8.71E-09	33	TRUE
rs112928119	20	33726451	C	T	PC	SD	8,911	0.773	0.135	0.010	3.93E-40	176	TRUE
rs145578591	20	33970133	G	A	PC	SD	8,911	0.982	-0.382	0.034	1.54E-29	127	TRUE
rs146348076	20	32526802	T	A	PC	SD	8,911	0.976	-0.345	0.029	8.00E-33	142	TRUE
rs148316982	20	35367029	A	C	PC	SD	8,911	0.978	-0.209	0.032	1.05E-10	42	TRUE
rs17332951	20	32764183	T	C	PC	SD	8,911	0.951	-0.314	0.020	3.59E-57	254	TRUE
rs182198088	20	33628212	T	C	PC	SD	8,911	0.991	-0.411	0.046	6.86E-19	79	TRUE
rs185595411	20	34222491	G	T	PC	SD	8,911	0.986	-0.428	0.038	5.99E-29	125	TRUE
rs190284633	20	32833621	G	A	PC	SD	8,911	0.990	-0.340	0.043	4.57E-15	61	TRUE
rs2425068	20	34214723	T	C	PC	SD	8,911	0.941	-0.206	0.023	2.31E-19	81	TRUE
rs34140587	20	32506150	C	G	PC	SD	8,911	0.392	0.059	0.009	1.60E-11	45	TRUE
rs4911468	20	33694254	A	T	PC	SD	8,911	0.320	-0.054	0.010	1.38E-08	32	TRUE
rs56317999	20	35386235	G	A	PC	SD	8,911	0.972	-0.176	0.029	1.20E-09	37	TRUE
rs6088887	20	34171324	G	A	PC	SD	8,911	0.807	0.071	0.011	4.45E-11	43	TRUE
rs6120993	20	34185161	G	T	PC	SD	8,911	0.860	-0.069	0.012	2.94E-08	31	TRUE
rs7263119	20	32254831	G	T	PC	SD	8,911	0.517	0.049	0.009	1.32E-08	32	TRUE
rs7271630	20	32449398	T	C	PC	SD	8,911	0.840	-0.107	0.012	6.89E-20	83	TRUE
rs73105074	20	33213192	A	C	PC	SD	8,911	0.959	0.146	0.025	2.79E-09	35	TRUE
rs867186	20	33764554	A	G	PC	SD	8,911	0.904	-0.455	0.014	1.00E-200	1,080	TRUE
rs906466	20	35048632	G	A	PC	SD	8,911	0.807	-0.073	0.011	1.52E-11	46	TRUE

Suppl. Table 4. Summary of the results from Mendelian randomization analyses. We applied the Wald’s ratio method when only 1 instrumental variant was available and the inverse- variance weighted (IVW) method in a multiplicative random-effect meta-analysis framework when >3 instrumental variants were available. We also applied the MR-Egger regression and MR-PRESSO to estimate causal effects. Further, we performed several sensitivity analyses to assess the robustness of our results to potential violations of the MR assumptions (Methods). β -values (causal effect estimates), odds ratios and P-values were derived the different MR methods. Q-statistic and respective P-values are shown from the Cochran’s Q-test for heterogeneity. Egger-intercept and respective P-values are provided for horizontal pleiotropy by MR-Egger. Abbreviations: IVW, inverse-variance weighting; SE, standard error; P-val, P-value; CI, confidence interval; N, number; OR, odds ratio.

Protein C → Cardiovascular outcomes:

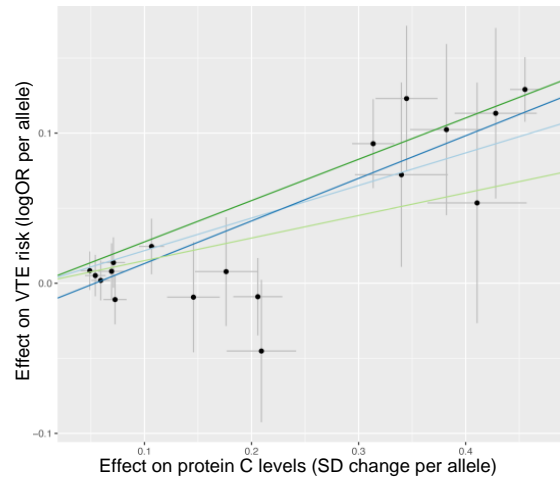
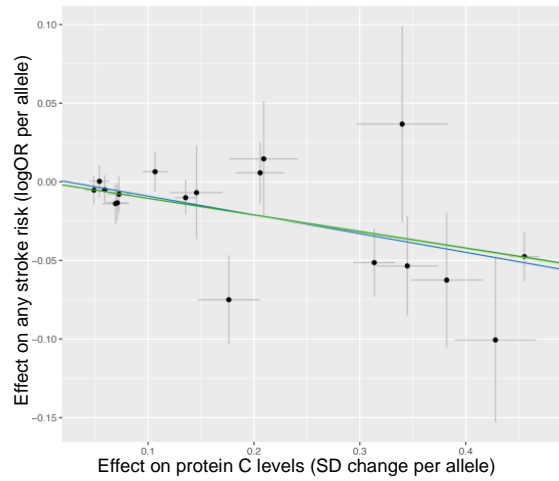
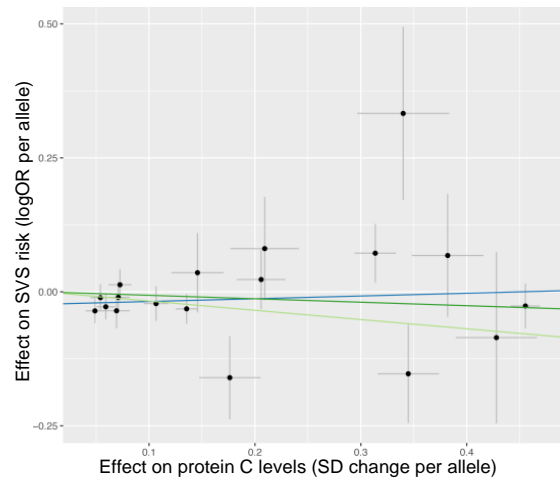
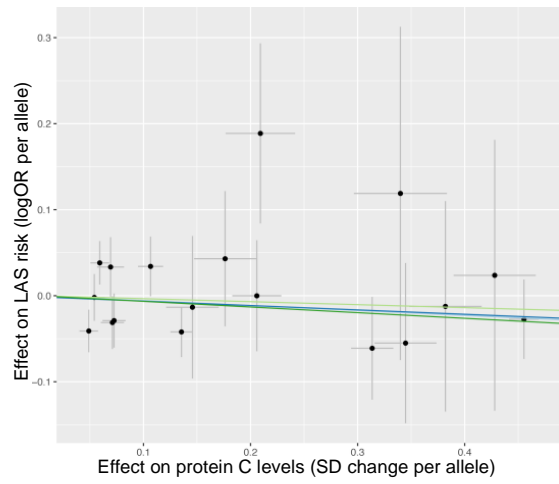
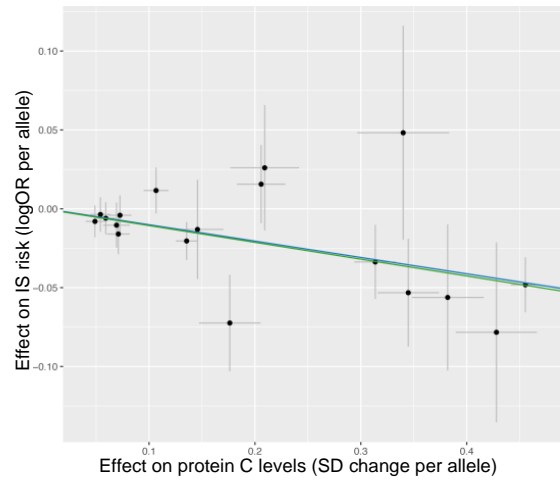
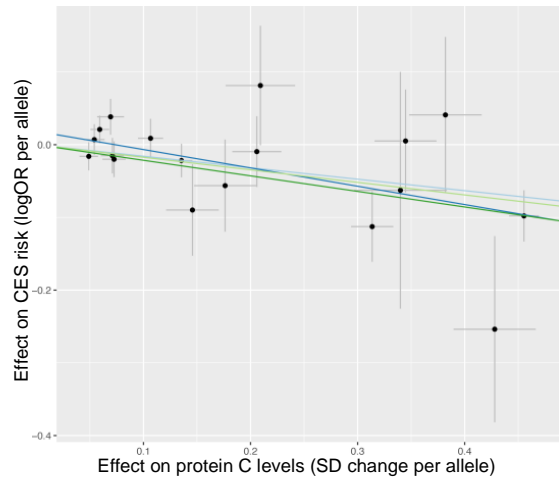
Exposure	Outcome	N (SNPs)	MR Wald’s Ratio/IVW				MR-Egger				MR-PRESSO		
			β (SE)	OR [95% CI]	P-val	Q-stat (P-val)	β (SE)	OR [95% CI]	P-val	Egger intercept (P-val)	β (SE)	OR [95% CI]	P-val
PC	CAD	19	-0.13 (0.013)	0.88 [0.86,0.90]	4.17E-24	17.24 (0.51)	-0.14 (0.018)	0.87 [0.84,0.90]	7.42E-14	0.002 (0.44)	-0.13 (0.012)	0.88 [0.86,0.90]	5.27E-09
PC	Stroke	18	-0.11 (0.023)	0.90 [0.86,0.94]	2.86E-06	13.79 (0.68)	-0.12 (0.034)	0.89 [0.83,0.95]	3.94E-04	0.003 (0.59)	-0.11 (0.020)	0.90 [0.86,0.94]	7.26E-05
PC	Ischemic stroke	18	-0.10 (0.025)	0.90 [0.86,0.95]	3.77E-05	12.48 (0.77)	-0.10 (0.037)	0.90 [0.84,0.97]	4.70E-03	0.0003 (0.96)	-0.10 (0.021)	0.90 [0.87,0.94]	1.64E-04
PC	Large-artery stroke	18	-0.06 (0.064)	0.94 [0.83,1.07]	3.76E-01	15.86 (0.53)	-0.05 (0.096)	0.95 [0.79,1.15]	5.98E-01	-0.001 (0.93)	-0.06 (0.062)	0.94 [0.84,1.07]	3.72E-01
PC	Cardioembolic stroke	18	-0.16 (0.051)	0.85 [0.77,0.94]	2.10E-03	17.83 (0.40)	-0.25 (0.075)	0.78 [0.67,0.90]	7.32E-04	0.019 (0.09)	-0.16 (0.051)	0.85 [0.77,0.94]	6.85E-03
PC	Small-vessel stroke	18	-0.06 (0.066)	0.94 [0.82,1.07]	3.32E-01	21.24 (0.22)	0.05 (0.094)	1.05 [0.88,1.27]	5.84E-01	-0.023 (0.10)	-0.06 (0.066)	0.94 [0.82,1.07]	3.46E-01
PC	DVT	18	0.30 (0.037)	1.34 [1.25,1.44]	8.70E-16	14.21 (0.65)	0.36 (0.053)	1.44 [1.30,1.59]	4.53E-12	-0.016 (0.07)	0.30 (0.034)	1.34 [1.26,1.43]	9.76E-08
PC	PE	18	0.16 (0.052)	1.17 [1.06,1.29]	2.65E-03	19.01 (0.33)	0.24 (0.071)	1.27 [1.11,1.46]	6.91E-04	-0.019 (0.10)	0.16 (0.052)	1.17 [1.06,1.29]	7.97E-03
PC	VTE	18	0.22 (0.032)	1.24 [1.17,1.32]	1.05E-11	17.80 (0.40)	0.28 (0.045)	1.33 [1.22,1.45]	2.10E-10	-0.015 (0.04)	0.22 (0.032)	1.24 [1.17,1.32]	3.10E-06
APC	CAD	1	-0.22 (0.033)	0.80 [0.75,0.85]	9.01E-12	NA	NA	NA	NA	NA	NA	NA	NA
APC	Stroke	1	-0.19 (0.062)	0.83 [0.73,0.94]	2.76E-03	NA	NA	NA	NA	NA	NA	NA	NA
APC	Ischemic stroke	1	-0.19 (0.068)	0.83 [0.72,0.95]	5.60E-03	NA	NA	NA	NA	NA	NA	NA	NA
APC	Large-artery stroke	1	-0.11 (0.180)	0.90 [0.63,1.28]	5.54E-01	NA	NA	NA	NA	NA	NA	NA	NA
APC	Cardioembolic stroke	1	-0.38 (0.138)	0.68 [0.52,0.89]	5.42E-03	NA	NA	NA	NA	NA	NA	NA	NA
APC	Small-vessel stroke	1	-0.10 (0.163)	0.90 [0.65,1.24]	5.28E-01	NA	NA	NA	NA	NA	NA	NA	NA
APC	DVT	1	0.62 (0.099)	1.87 [1.54,2.26]	2.74E-10	NA	NA	NA	NA	NA	NA	NA	NA
APC	PE	1	0.45 (0.132)	1.58 [1.22,2.04]	5.56E-04	NA	NA	NA	NA	NA	NA	NA	NA
APC	VTE	1	0.50 (0.084)	1.66 [1.40,1.95]	1.92E-09	NA	NA	NA	NA	NA	NA	NA	NA

Cardiovascular outcomes → protein C:

Exposure	Outcome	N (SNPs)	MR IVW				MR-PRESSO		
			β (SE)	OR [95% CI]	P-val	Q-stat (P-val)	β (SE)	OR [95% CI]	P-val
CAD	APC	138	-0.01 (0.049)	0.99 [0.90,1.09]	0.837	144.15 (0.32)	-0.01 (0.049)	0.99 [0.90,1.09]	0.837
VTE	APC	19	-0.06 (0.045)	0.94 [0.86,1.02]	0.157	22.71 (0.20)	-0.06 (0.045)	0.94 [0.86,1.02]	0.174
DVT	APC	17	-0.06 (0.037)	0.94 [0.87,1.01]	0.101	18.23 (0.31)	-0.06 (0.037)	0.94 [0.87,1.01]	0.120

Suppl. Table 5. Characteristics of the participants in the *PROCR-p.S219G* recall-by-genotype study. Characteristics of healthy volunteers are presented as mean and standard deviation (in brackets) or percentage, as appropriate. Characteristics were compared between the homozygous groups (Methods). Abbreviations: DSP, diastolic blood pressure; HR, heart rate; SBP, systolic blood pressure.

	rs867186-AA	rs867186-AG	rs867186-GG	P-value
Number of participants	18	16	18	–
Female (%)	33.3	31.2	33.3	0.60
Current smokers (%)	0	0	0	–
Family history (%)	66.7	81.2	77.8	–
Age (year)	49.6 (11.4)	49.6 (8.0)	49.9 (10.6)	0.93
Height (cm)	173.9 (9.2)	173.0 (8.5)	175.3 (8.4)	0.64
Weight (kg)	76.1 (12.5)	76.6 (11.2)	78.1 (11.4)	0.57
BMI (kg/m ²)	25.1 (3.4)	25.6 (3.1)	25.4 (2.6)	0.78
Body fat (%)	24.6 (8.8)	23.6 (9.5)	24.2 (8.5)	0.89
SBP, seated (mmHg)	125.6 (14.7)	127.6 (15.4)	126.5 (17.8)	0.85
DBP, seated (mmHg)	75.0 (11.5)	80.1 (9.4)	78.0 (12.8)	0.38
HR, seated (beats/min)	69.6 (20.6)	64.9 (9.6)	65.4 (11.8)	0.44
SBP, standing (mmHg)	123.6 (12.5)	130.7 (17.9)	125.6 (16.5)	0.65
DBP, standing (mmHg)	78.0 (12.0)	82.6 (9.9)	81.5 (10.7)	0.29
HR, standing (beats/min)	74.3 (13.1)	72.8 (11.6)	72.8 (14.3)	0.75



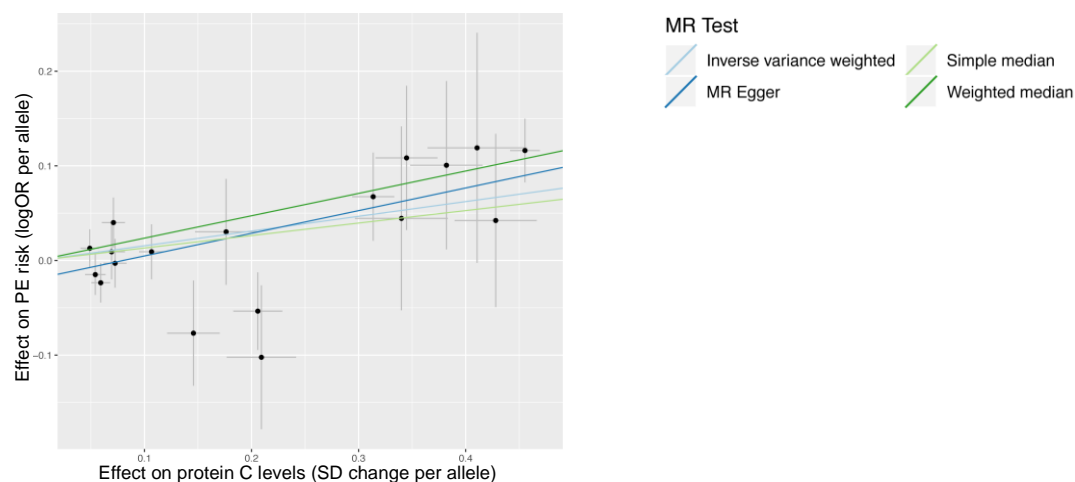
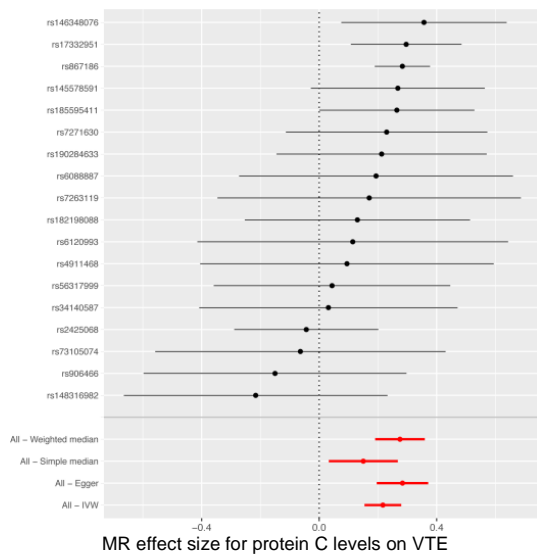
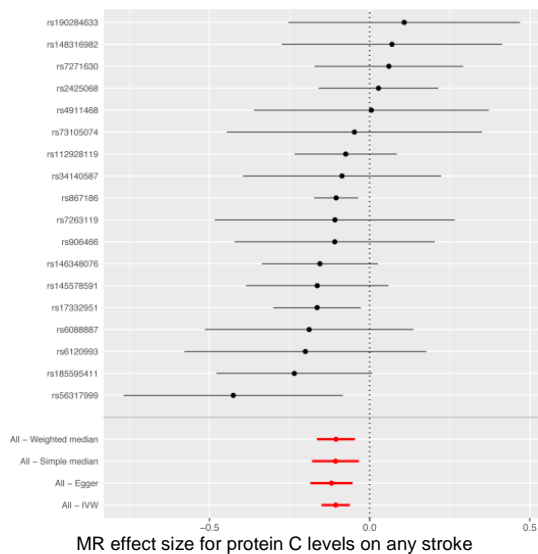
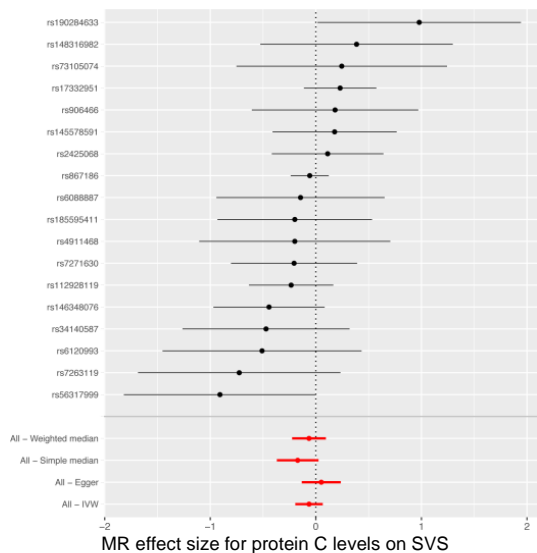
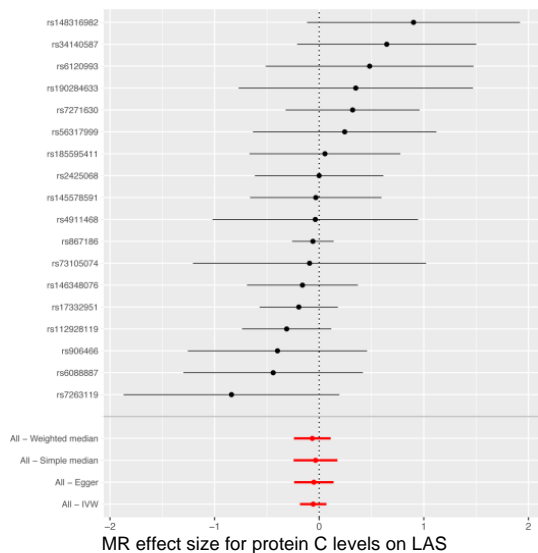
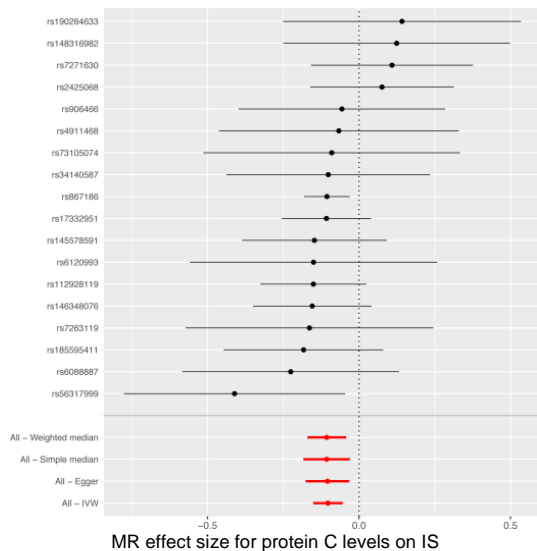
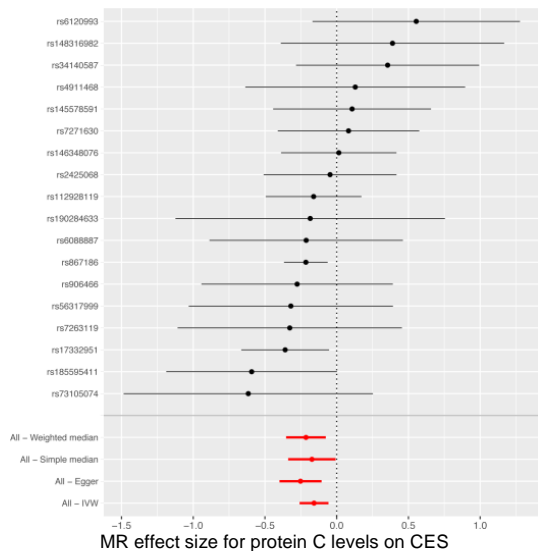


Figure S1. Protein C levels and risk of cardiovascular diseases. Scatter plot showing the estimated effect sizes and 95% confidence intervals on plasma protein C levels (from linear regression) and risk of several cardiovascular diseases (from logistic regression) for each variant used in the genetic score. The different regression lines indicate the effect sizes as calculated by different MR tests. Abbreviations: LAS, large-artery stroke; IS, ischemic stroke; CES, cardioembolic stroke; SVS, small-vessel stroke; VTE, venous thromboembolism; PE, pulmonary embolism.



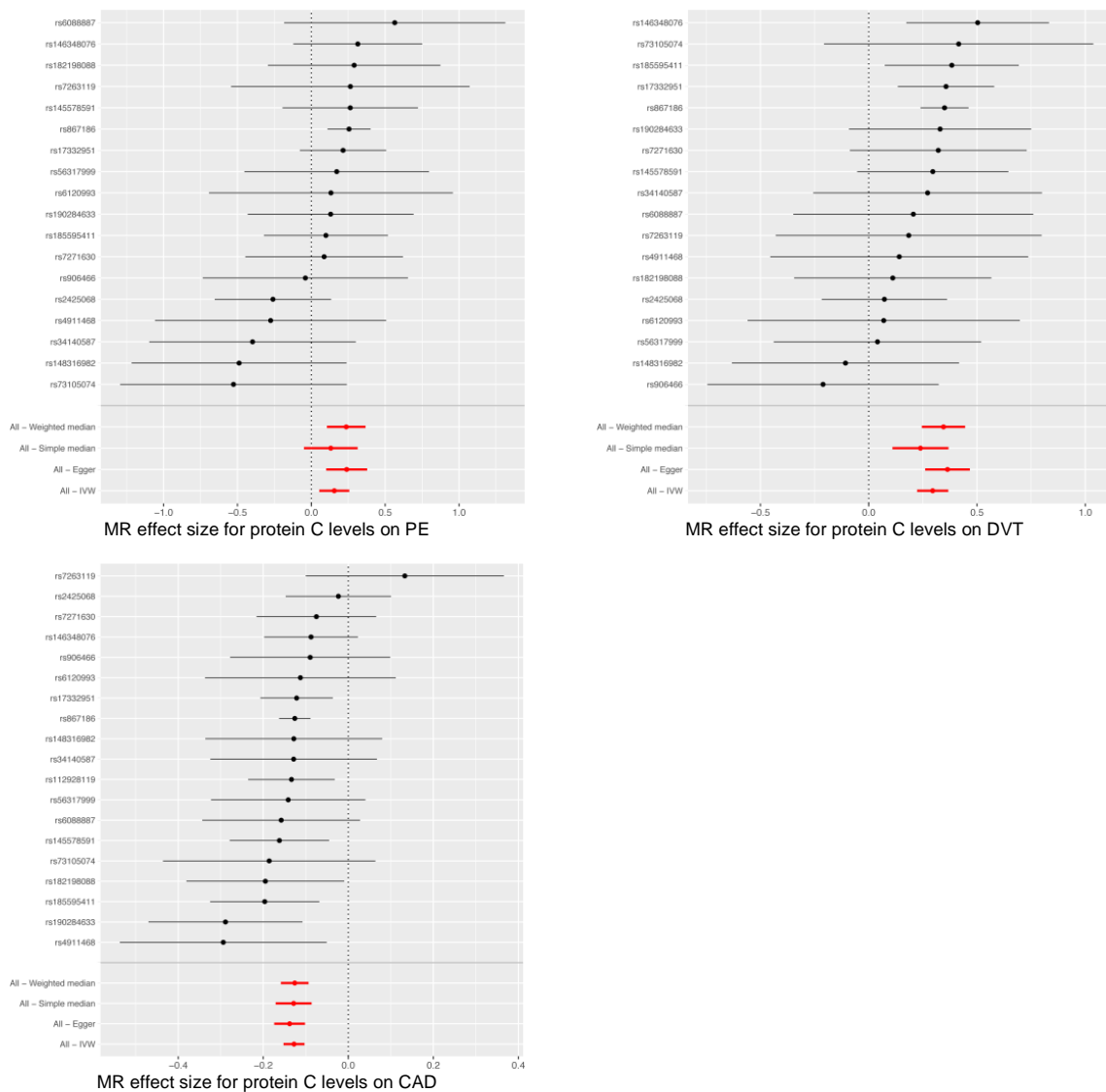


Figure S2. Results from Mendelian randomization analyses. Forest plot showing the MR effect sizes and 95% confidence intervals (IVW method). Abbreviations: LAS, large-artery stroke; IS, ischemic stroke; CES, cardioembolic stroke; SVS, small-vessel stroke; VTE, venous thromboembolism; PE, pulmonary embolism; DVT, deep vein thrombosis; CAD, coronary artery disease.

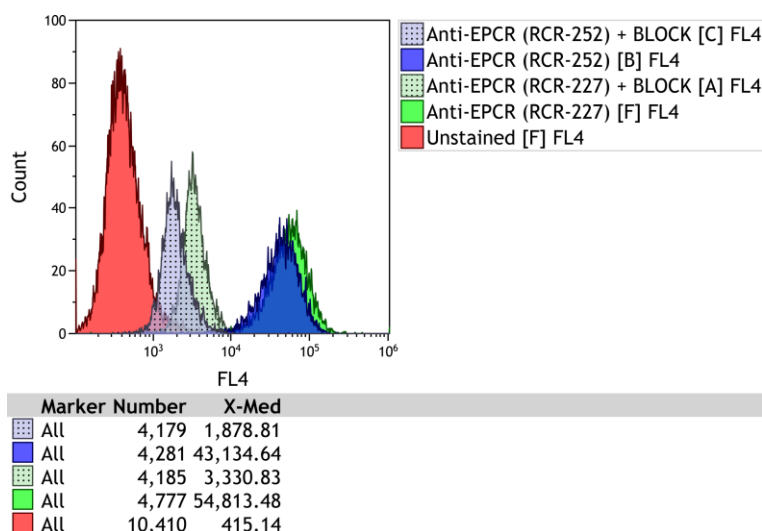


Figure S3. EPCR monoclonal antibody testing for flow cytometry. Fluorescence intensities (FL4 channel) for human umbilical vein endothelial cells (HUVECs) stained using two allophycocyanin (APC)-conjugated EPCR monoclonal antibodies derived from distinct clones, RCR-252 and RCR-227. EPCR has been shown to be highly expressed on the surface of HUVECs (Medina et al. (2014) *Arterioscler Thromb Vasc Biol.* 34(3), 684-90). Accordingly, both antibodies yielded very high signals with median fluorescence intensities (MFI) of 43,135 and 54,813 for clones RCR-252 and RCR-227, respectively, relative to an unstained MFI of 415. To confirm the specificity of these signals, we incubated HUVECs with an unconjugated EPCR monoclonal antibody derived from the RCR-252 clone ('BLOCK') prior to the addition of an APC-conjugated antibody and subsequent flow cytometry. For both clones, we observed a marked reduction in MFI signal with a 5:1 ratio of unconjugated to APC-conjugated antibody. Taken together, these findings indicate that both of the APC-conjugated antibodies (RCR-252 and RCR-227) are specific to the EPCR protein. Abbreviations: X-Med, median fluorescence intensity.

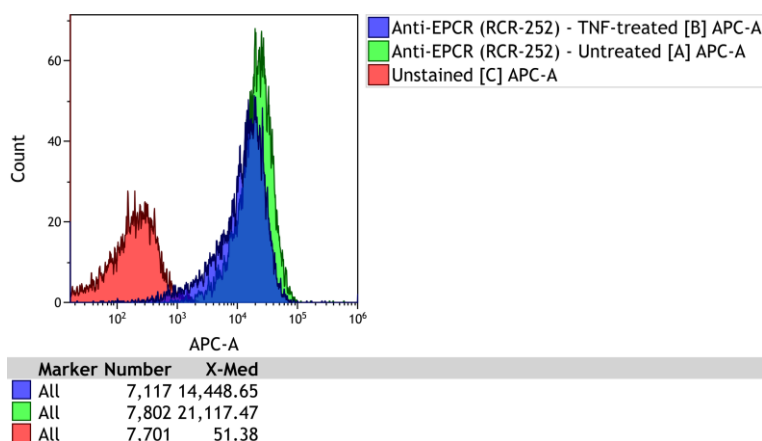


Figure S4. Quantification of surface EPCR on HUVECs. Fluorescence intensities (APC-A channel) for HUVECs treated with 10 ng/ml tumor necrosis factor (TNF) or vehicle control and stained using an APC-conjugated EPCR monoclonal antibody derived from the RCR-252 clone. Abbreviations: X-Med, median fluorescence intensity.

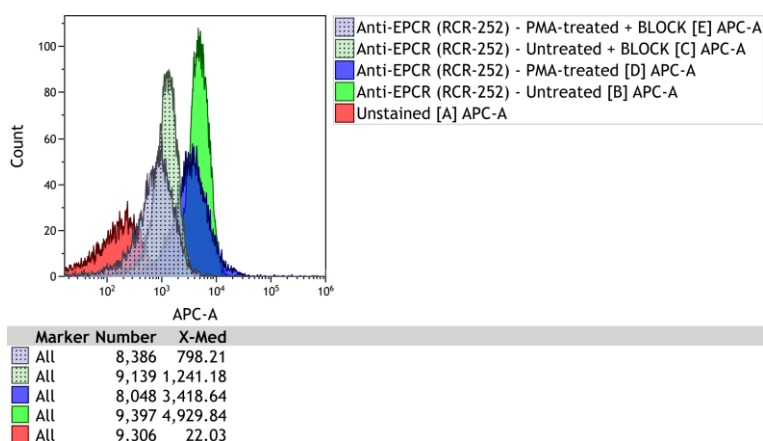


Figure S5. Quantification of surface EPCR on U937 cells. Fluorescence intensities (APC-A channel) for U937 cells treated with 100 ng/ml phorbol 12-myristate 13-acetate (PMA) or vehicle control and stained using an APC-conjugated EPCR monoclonal antibody derived from the RCR-252 clone. The specificity of the vehicle control signal was assessed by pre-incubating cells with an unconjugated blocking antibody ('BLOCK') prior to staining. Abbreviations: X-Med, median fluorescence intensity.

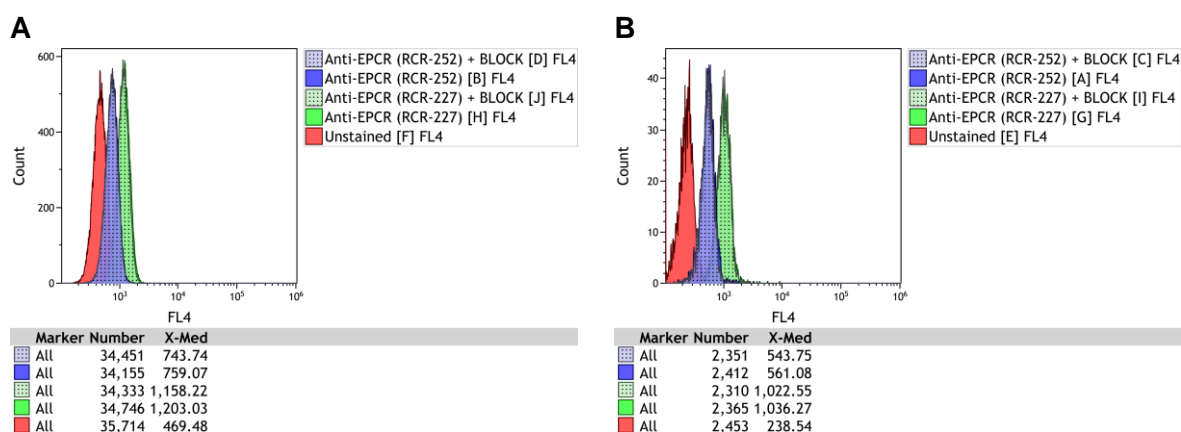


Figure S6. Quantification of surface EPCR on monocytes and neutrophils. Previous studies have indicated that EPCR is expressed in other cell types beyond endothelial cells, including immune cells such as monocytes and neutrophils (Gleeson et al. (2012) *Cell Mol Life Sci.* 69(5), 717-26). To explore this, we performed flow cytometry in both primary human neutrophils (A) and monocytes (B) using two APC-conjugated EPCR monoclonal antibodies derived from distinct clones (RCR-252 and RCR-227). We observed small MFI signals (FL4 channel) of comparable magnitude for both cell types, suggesting that EPCR may be weakly expressed on the surface of monocytes and neutrophils. However, when we pre-incubated both cell types with unconjugated EPCR antibody ('BLOCK') we did not observe any reduction in signal. This indicates that the small signal observed in monocytes and neutrophils using the APC-conjugated antibodies reflects non-specific binding, suggesting that EPCR is not expressed at detectable (by flow cytometry) levels on the surface of either of these two cell types. Abbreviations: X-Med, median fluorescence intensity.

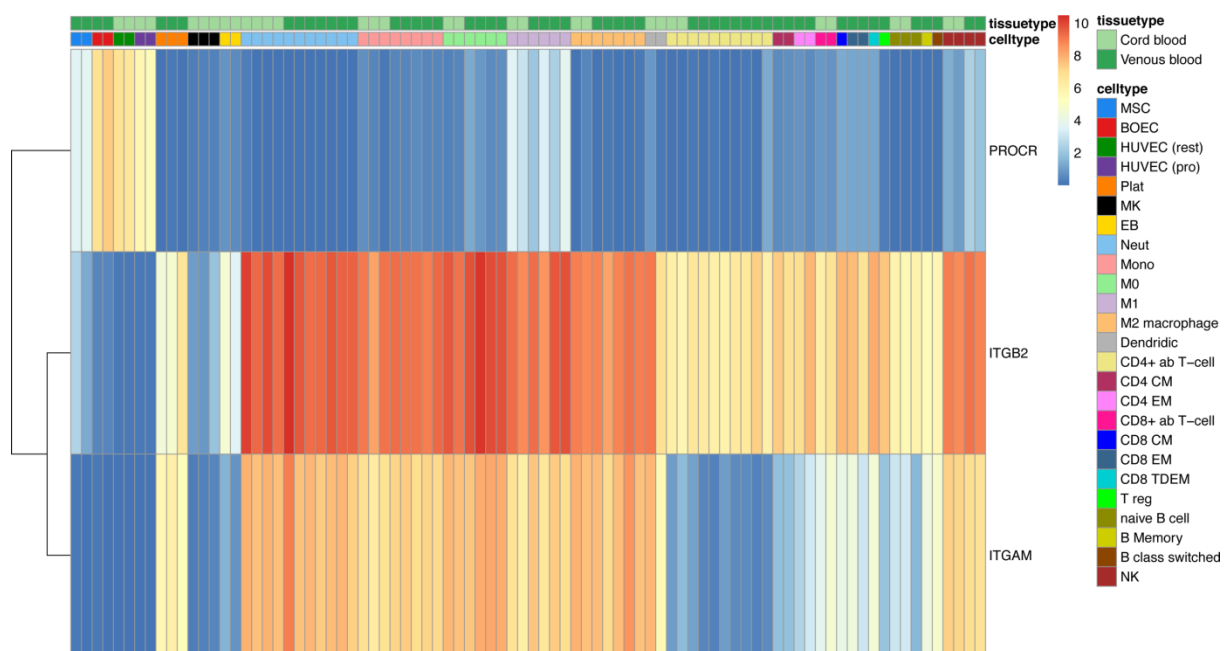


Figure S7. Gene expression profiles of *PROCOR*, *ITGB2* and *ITGAM*. Heatmap showing the normalized expression levels of selected candidate genes across a wide range of primary human blood cells (Grassi et al. (2019) *bioRxiv* 764613). Data are shown for the *PROCOR* gene (encoding the endothelial protein C receptor), *ITGAM* (CD11b) and *ITGB2* (CD18). CD11b and CD18 constitute the Macrophage-1 antigen.