

Monitoring Disease Transmissibility of 2019 Novel Coronavirus Disease in Zhejiang, China

Appendix

Likelihood formulation for instantaneous reproduction number (R_t)

Method 1: Imported cases were plugged into the reproduction number estimation equation from Wallinga and Teunis (1), and Cori et al. (2). As the total number of reported cases ($I(t)$) at time t ($t = 0, 1, 2, 3 \dots$) is the sum of local cases ($h_L(t)$) and imported cases ($h_I(t)$), the total number of infections from all the infected cases at time t can be computed as

$$\sum_{s=1}^t w_s I(t-s) = \sum_{s=1}^t w_s [h_L(t-s) + h_I(t-s)],$$

given w_s is a serial interval distribution. Suppose the time-varying reproduction number R_t is the average number of secondary cases generated by each infected individual provided that the conditions remained as they were at time t (2), the expected number of local infections is

$$E[h_L(t)] = R_t \sum_{s=1}^t w_s [h_L(t-s) + h_I(t-s)]$$

With a pre-determined distribution of w_s and assuming the number of local infections follows a Poisson distribution, a likelihood function can be formed (3),

$$L(R_t) = \prod_t \left(\frac{\{E[h_L(t)]\}^{n_L(t)} e^{-E[h_L(t)]}}{n_L(t)!} \right)$$

where $n_L(t)$ is the observed numbers of local cases on day t .

Method 2: Method 2 is based on the framework of simple susceptible-exposed-infectious-recovered (SEIR) model which classifies a population into one of four compartments at each time point t : susceptible ($S(t)$), latent ($E(t)$), infectious ($I(t)$), or recovered (4,5). In the model, a susceptible individual could be infected by either an import case or a local case. We assume $h_I(t)$ be the number of imported cases causing an influx to the disease transmission system and $\beta S(t)I(t)/N$ be the number of local

infected cases (in a latent status) given a local population size N and a transmission rate β . Similar to previous model setting (6,7), the model can be described with the following differential equations, which define the rates of subject movement at each time step:

$$\begin{aligned}\frac{dS(t)}{dt} &= -\frac{\beta S(t)I(t)}{N} \\ \frac{dE(t)}{dt} &= \frac{\beta S(t)I(t)}{N} - \alpha E(t) \\ \frac{dI(t)}{dt} &= \alpha E(t) - \gamma I(t) + h_I(t)\end{aligned}$$

where $1/\alpha$ is the average length of latent period and $1/\gamma$ is the length of infectious period. With $\alpha E(t)$ being the expected number of local cases reported and Poisson-distributed outcomes assumed, a likelihood function from the transmission model is formed

$$L(\beta) = \prod_t \left(\frac{(\alpha E(t))^{n_{L,t}} e^{-\alpha E(t)}}{n_{L,t}!} \right)$$

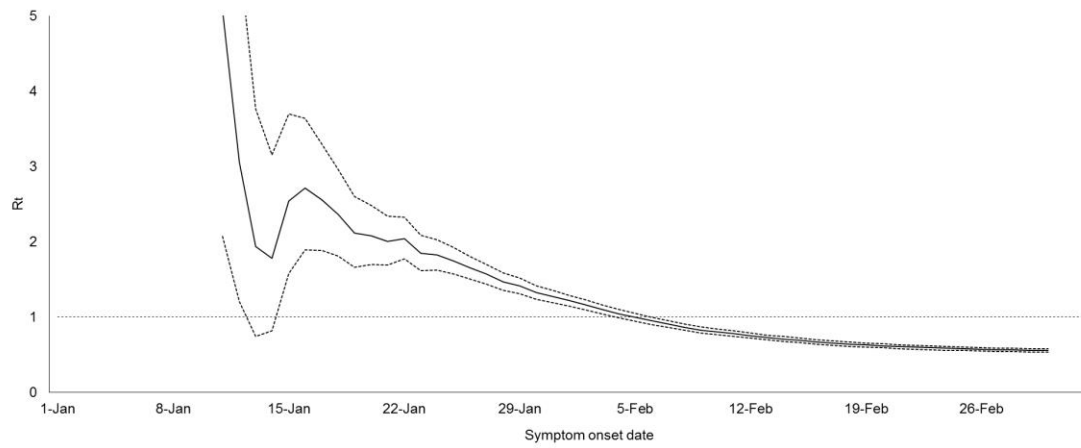
By solving the likelihood, we can obtain the R_t as $\beta S(t)/N\gamma$ (4,5).

Estimation

In method 1, we assumed the serial interval follows a lognormal distribution with mean 7.5 days and standard deviation 3.4 days (8). In method 2, we assumed the mean latent duration was fixed at 5.2 days (8) and the mean infectious duration was 2.3 days (i.e. difference between mean serial interval and latent duration). Maximum likelihood methods were used to solve the model parameters based on the time series data of the confirmed cases.

References

1. Wallinga J, Teunis P. Different epidemic curves for severe acute respiratory syndrome reveal similar impacts of control measures. *Am J Epidemiol*. 2004 Sep 15;160(6):509-16.
2. Cori A, Ferguson NM, Fraser C, Cauchemez S. A new framework and software to estimate time-varying reproduction numbers during epidemics. *Am J Epidemiol*. 2013 Nov 1;178(9):1505-12.
3. Glass K, Mercer GN, Nishiura H, McBryde ES, Becker NG. Estimating reproduction numbers for adults and children from case data. *J R Soc Interface*. 2011 Sep 7;8(62):1248-59.
4. Kermack WO, McKendrick AG. Contributions to the mathematical theory of epidemics, part I. *Proceedings of the Royal Society of London, Series A*. 1927 Aug 1;115(772):700-721.
5. Diekmann O, Heesterbeek JAP. *Mathematical Epidemiology of Infectious Diseases: Model Building, Analysis and Interpretation*. New York: John Wiley & Sons; 2000.
6. Chong KC, Wang X, Liu S, Cai J, Su X, Zee BC, et al. Interpreting the transmissibility of the avian influenza A (H7N9) infection from 2013 to 2015 in Zhejiang Province, China. *Epidemiol Infect*. 2016 Jun;144(8):1584-91.
7. Chong KC, Zee BC, Wang MH. A statistical method utilizing information of imported cases to estimate the transmissibility for an influenza pandemic. *BMC Med Res Methodol*. 2017 Feb 21;17(1):31.
8. Li Q, Guan X, Wu P, Wang X, Zhou L, Tong Y, et al. Early transmission dynamics in Wuhan, China, of novel coronavirus–infected pneumonia. *N Engl J Med*. 2020 Jan 29.



Appendix Figure. Estimated instantaneous reproduction number (R_t) (solid line) and 95% confidence intervals (dotted lines) assuming the serial interval following a gamma distribution with mean 7.5 days and standard deviation 3.4 days.