

Supporting information file

Forecasting the Cumulative Number of COVID-19 Deaths in China: Can More Lives Be Saved?

Zuqin Zhang, Cheng Long, Wei Yao, Qi Ying and Xinmiao Fu

Methods

Sources of data

We collected the daily cumulative number of confirmed cases and deaths (from Jan 21, 2020 to Feb 29, 2020) of COVID-19 patients from official websites of the National Health Commission of China and Hubei Provincial Health Commissions. The cumulative number of confirmed cases and deaths of 2003 SARS in China and worldwide were obtained from the official website of WHO.

Data fitting with the Boltzmann function

Data were organized in Microsoft Excel and then incorporated into Microcal Origin software (note: 2021 Jan 21 was set as day 1 and so on). The Boltzmann function was applied to data simulation for each set of data regarding different geographic regions (e.g., China, Hubei Province and so on) and parameters of each function were obtained, with the potential total number of confirmed cases being directly given by parameter A_2 . Estimation of critical dates was performed by predicting the cumulative number of confirmed cases in the coming days post Feb 23, 2020. The Boltzmann function for simulation is expressed as follows:

$$C(x) = A_2 + \frac{A_1 - A_2}{1 + e^{(x-x_0)/dx}} \quad (1)$$

where $C(x)$ is the cumulative number of confirmed cases at day x ; A_1 , A_2 , x_0 , and dx are constants. In particular, A_2 represents the estimated potential total number of confirmed cases or deaths of. Details of derivation of the Boltzmann function for epidemic analysis are described in our recent report ¹.

Furthermore, we assume that the number of deaths (designated as $D(x)$) is proportional to the number of confirmed cases (i.e., $C(x)$) under specific circumstances, although the former has a lag time behind the latter. Then, $D(x)$ can also be expressed in the form of Boltzmann function.

Estimation of uncertainty in the non-linear regression

A Monte Carlo technique is applied to assess the uncertainty in the estimated total number of confirmed cases due to the uncertainty in the reported number cases. 1000 non-linear regressions were performed with the same time series data but each data point in the time series was perturbed by multiplying with a random scaling factor that represents the relative uncertainty. We assumed that the relative uncertainty follows a single-sided normal

distribution with a mean of 1.0 and a standard deviation of 2.5%. This implies that all reported cases are positive but there is a tendency to miss-reporting some positive cases so that the reported numbers represent a lower limit. The resulting mean and 95% confidence interval (CI) were presented.

Data fitting with the Richards function

The Richards function was applied to data simulation for each set of data regarding different geographic regions (e.g., China, Hubei Province and so on) and parameters of each function were obtained, with the potential total number of confirmed cases being directly given by parameter b . The Richards function for simulation is expressed as follows according to earlier report^{2,3}:

$$I(x) = \frac{b}{(1 + e * \exp^{-c(x-d)})^{1/e}} \quad (1)$$

where $I(x)$ is the cumulative number of infected cases at day x ; b , c , d and e are constants. In particular, b represents the estimated potential total number of infected cases or deaths of. Furthermore, we assume that the number of deaths (designated as $D(x)$) is proportional to the number of infected cases (i.e., $I(x)$) under specific circumstances, although the former has a lag time behind the latter. Then, $D(x)$ can also be expressed in the form of Richards function.

Results

Table S1 cumulative numbers of COVID-19 confirmed cases before and after adjustment and the numbers of deaths

| date | mainland China | | | | | Hubei | | | | | Wuhan | | | | |
|------|----------------|-------|-------|-------|------|-------|-------|-------|-------|------|-------|-------|-------|-------|------|
| | a | b | c | d | e | a | b | c | d | e | a | b | c | d | e |
| 1/21 | 440 | | 440 | 608 | 9 | 375 | | 375 | 543 | 9 | | | | | 9 |
| 1/22 | 571 | | 571 | 770 | 17 | 444 | | 444 | 643 | 17 | | | | | 17 |
| 1/23 | 830 | | 830 | 1076 | 25 | 549 | | 549 | 795 | 24 | 459 | | 459 | 764 | 23 |
| 1/24 | 1287 | | 1287 | 1614 | 41 | 729 | | 729 | 1056 | 39 | 572 | | 572 | 952 | 38 |
| 1/25 | 1975 | | 1975 | 2447 | 56 | 1052 | | 1052 | 1524 | 52 | 618 | | 618 | 1029 | 45 |
| 1/26 | 2744 | | 2744 | 3382 | 80 | 1423 | | 1423 | 2061 | 76 | 698 | | 698 | 1162 | 63 |
| 1/27 | 4515 | | 4515 | 5732 | 106 | 2714 | | 2714 | 3931 | 100 | 1590 | | 1590 | 2647 | 85 |
| 1/28 | 5974 | | 5974 | 7567 | 132 | 3554 | | 3554 | 5147 | 125 | 1905 | | 1905 | 3171 | 104 |
| 1/29 | 7711 | | 7711 | 9767 | 170 | 4586 | | 4586 | 6642 | 162 | 2261 | | 2261 | 3764 | 129 |
| 1/30 | 9692 | | 9692 | 12295 | 213 | 5806 | | 5806 | 8409 | 204 | 2639 | | 2639 | 4393 | 159 |
| 1/31 | 11791 | | 11791 | 14997 | 259 | 7153 | | 7153 | 10359 | 249 | 3215 | | 3215 | 5352 | 192 |
| 2/1 | 14380 | | 14380 | 18448 | 304 | 9074 | | 9074 | 13142 | 294 | 4109 | | 4109 | 6840 | 224 |
| 2/2 | 17205 | | 17205 | 22215 | 361 | 11177 | | 11177 | 16187 | 350 | 5142 | | 5142 | 8560 | 265 |
| 2/3 | 20438 | | 20438 | 26499 | 425 | 13522 | | 13522 | 19583 | 414 | 6384 | | 6384 | 10627 | 313 |
| 2/4 | 24324 | | 24324 | 31800 | 490 | 16678 | | 16678 | 24154 | 479 | 8351 | | 8351 | 13902 | 362 |
| 2/5 | 28018 | | 28018 | 36833 | 563 | 19665 | | 19665 | 28480 | 549 | 10117 | | 10117 | 16842 | 414 |
| 2/6 | 31161 | | 31161 | 41073 | 636 | 22112 | | 22112 | 32024 | 618 | 11618 | | 11618 | 19340 | 478 |
| 2/7 | 34546 | | 34546 | 45731 | 722 | 24953 | | 24953 | 36138 | 699 | 13603 | | 13603 | 22645 | 545 |
| 2/8 | 37198 | | 37198 | 49346 | 811 | 27100 | | 27100 | 39248 | 780 | 14982 | | 14982 | 24940 | 608 |
| 2/9 | 40171 | | 40171 | 53453 | 908 | 29631 | | 29631 | 42913 | 871 | 16902 | | 16902 | 28137 | 681 |
| 2/10 | 42638 | | 42638 | 56860 | 1016 | 31728 | | 31728 | 45950 | 974 | 18454 | | 18454 | 30720 | 748 |
| 2/11 | 44750 | | 44750 | 59707 | 1113 | 33366 | | 33366 | 48323 | 1068 | 19558 | | 19558 | 32558 | 820 |
| 2/12 | 59804 | 13332 | 46472 | 62105 | 1367 | 48206 | 13332 | 34874 | 50507 | 1310 | 32994 | 12364 | 20630 | 34343 | 1036 |
| 2/13 | 63851 | 15384 | 48467 | 64874 | 1445 | 51986 | 15384 | 36602 | 53009 | 1383 | 35991 | 14031 | 21960 | 36557 | 1079 |
| 2/14 | 66496 | 16522 | 49974 | 66956 | 1523 | 54406 | 16522 | 37884 | 54866 | 1457 | 37914 | 14953 | 22961 | 38223 | 1123 |
| 2/15 | 68500 | 17410 | 51090 | 68500 | 1665 | 56249 | 17410 | 56249 | 56249 | 1596 | 39462 | 15756 | 23705 | 39462 | 1233 |
| 2/16 | 70548 | | | 70548 | 1770 | 58182 | | | 58182 | 1696 | 41152 | | | 41152 | 1309 |
| 2/17 | 72436 | | | 72436 | 1868 | 59989 | | | 59989 | 1789 | 42752 | | | 42752 | 1381 |
| 2/18 | 74185 | | | 74185 | 2004 | 61682 | | | 61682 | 1921 | 44412 | | | 44412 | 1497 |
| 2/19 | 74576 | | | 74576 | 2118 | 62031 | | | 62031 | 2029 | 45027 | | | 45027 | 1585 |
| 2/20 | 75465 | | | 75465 | 2236 | 62662 | | | 63088 | 2144 | 45346 | | | 45346 | 1684 |
| 2/21 | 76288 | | | 76288 | 2345 | 63454 | | | 63454 | 2250 | 45660 | | | 45660 | 1774 |
| 2/22 | 76936 | | | 76936 | 2442 | 64084 | | | 64084 | 2346 | 46201 | | | 46201 | 1856 |
| 2/23 | 77150 | | | 77150 | 2592 | 64287 | | | 64287 | 2495 | 46607 | | | 46607 | 1987 |

| | | | | | | | | | | | | | | | |
|------|-------|--|--|-------|------|-------|--|--|-------|------|-------|--|--|-------|------|
| 2/24 | 77658 | | | 77658 | 2663 | 64786 | | | 64786 | 2563 | 47071 | | | 47071 | 2043 |
| 2/25 | 78064 | | | 78064 | 2715 | 65187 | | | 65187 | 2615 | 47441 | | | 47441 | 2085 |
| 2/26 | 78497 | | | 78497 | 2744 | 65596 | | | 65596 | 2641 | 47824 | | | 47824 | 2104 |
| 2/27 | 78824 | | | 78824 | 2788 | 65914 | | | 65914 | 2682 | 48137 | | | 48137 | 2132 |
| 2/28 | 79251 | | | 79251 | 2835 | 66337 | | | 66337 | 2727 | 48557 | | | 48557 | 2169 |
| 2/29 | 79824 | | | 79824 | 2870 | 66907 | | | 66907 | 2761 | 49122 | | | 49122 | 2195 |

a: reported cumulative number of confirmed cases.

b: cumulative number of confirmed cases determined by clinical features.

c: cumulative cases without those determined by clinical features.

d: adjusted cumulative number of confirmed cases for fitting are colored in red.

e: cumulative number of COVID-19 deaths for regression analysis.

Table S2 Prediction of the daily number of new COVID-19 deaths in Hubei Province and Wuhan City by the established Boltzmann functions ^a.

| | | | | | | | | | | | | | | | |
|--------------|------|------|------|------|------|------|------|------|------|------|------|------|------|------|------|
| Date | 3/1 | 3/2 | 3/3 | 3/4 | 3/5 | 3/6 | 3/7 | 3/8 | 3/9 | 3/10 | 3/11 | 3/12 | 3/13 | 3/14 | 3/15 |
| Hubei | 40 | 35 | 30 | 27 | 23 | 20 | 18 | 15 | 13 | 11 | 10 | 8 | 7 | 6 | 5 |
| Wuhan | 34 | 30 | 26 | 23 | 20 | 18 | 15 | 13 | 12 | 10 | 9 | 7 | 6 | 6 | 5 |
| Date | 3/16 | 3/17 | 3/18 | 3/19 | 3/20 | 3/21 | 3/22 | 3/23 | 3/24 | 3/25 | 3/26 | 3/27 | 3/28 | 3/29 | 3/30 |
| Hubei | 5 | 4 | 3 | 3 | 3 | 2 | 2 | 2 | 1 | 1 | 1 | 1 | 1 | 1 | 1 |
| Wuhan | 4 | 4 | 3 | 3 | 2 | 2 | 2 | 1 | 1 | 1 | 1 | 1 | 1 | 1 | 0 |

^a Parameters of the established Boltzmann function for Hubei Province are as follows. A1: -70.604; A2: 3096.8; x0: 25.375; dx: 6.5043. Parameters of the function Wuhan City are shown in the insert of **Fig. 1B**.

Figure S1

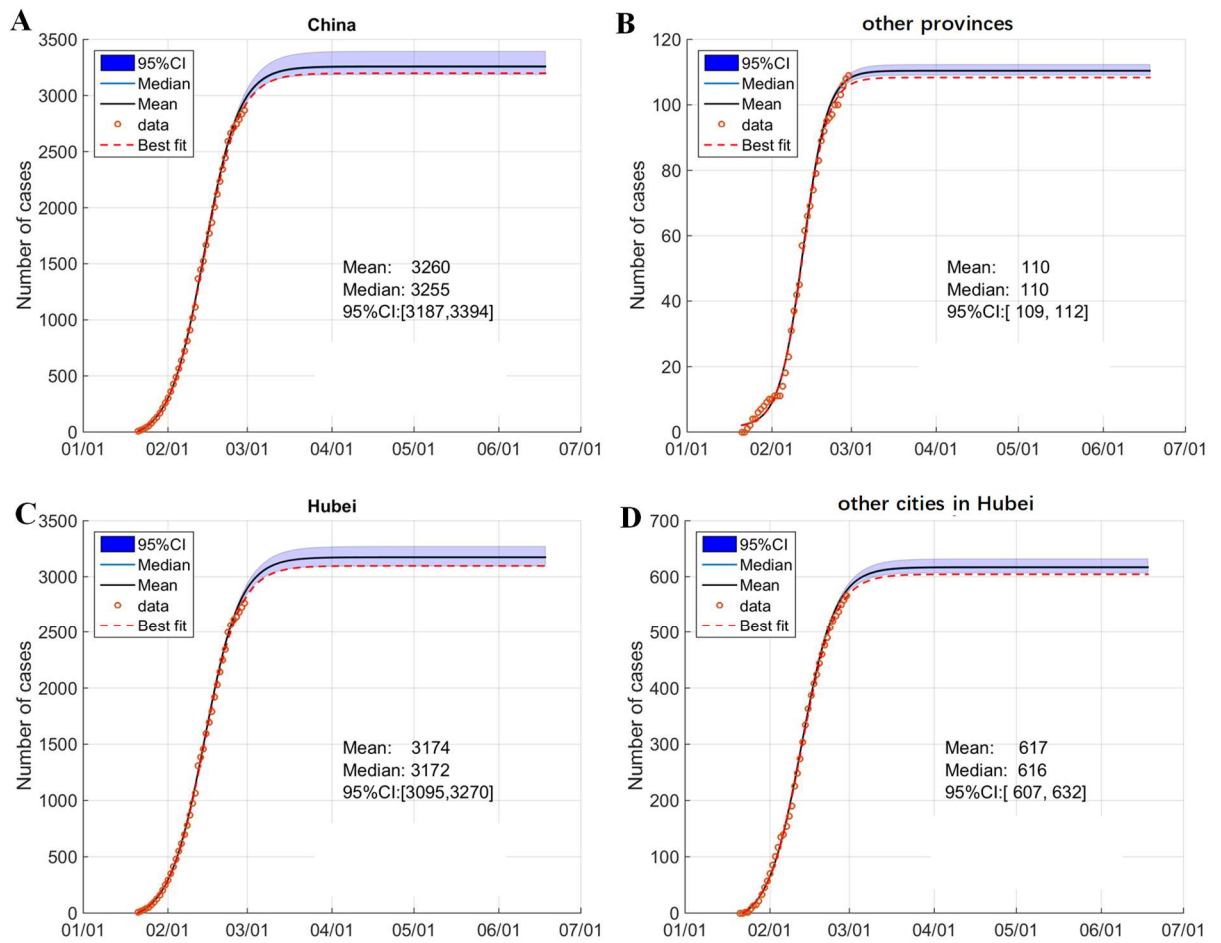


Figure S1. Analysis of the uncertainty of COVID-19 deaths for mainland China, other provinces, Hubei and other cities in Hubei using the Boltzmann function

Data of mainland China (panel A), other provinces (panel B), Hubei Province (panel C) and other cities in Hubei (panel D) were fitted to the Boltzmann function assuming that the relative uncertainty of the data followed a single-sided normal distribution with a mean of 1.0 and a standard deviation of 2.5%. The original data are shown as circles. The simulated results are presented as colored lines as indicated. The insets show key statistics. Results for Wuhan City is shown **Fig. 1E**.

Figure S2

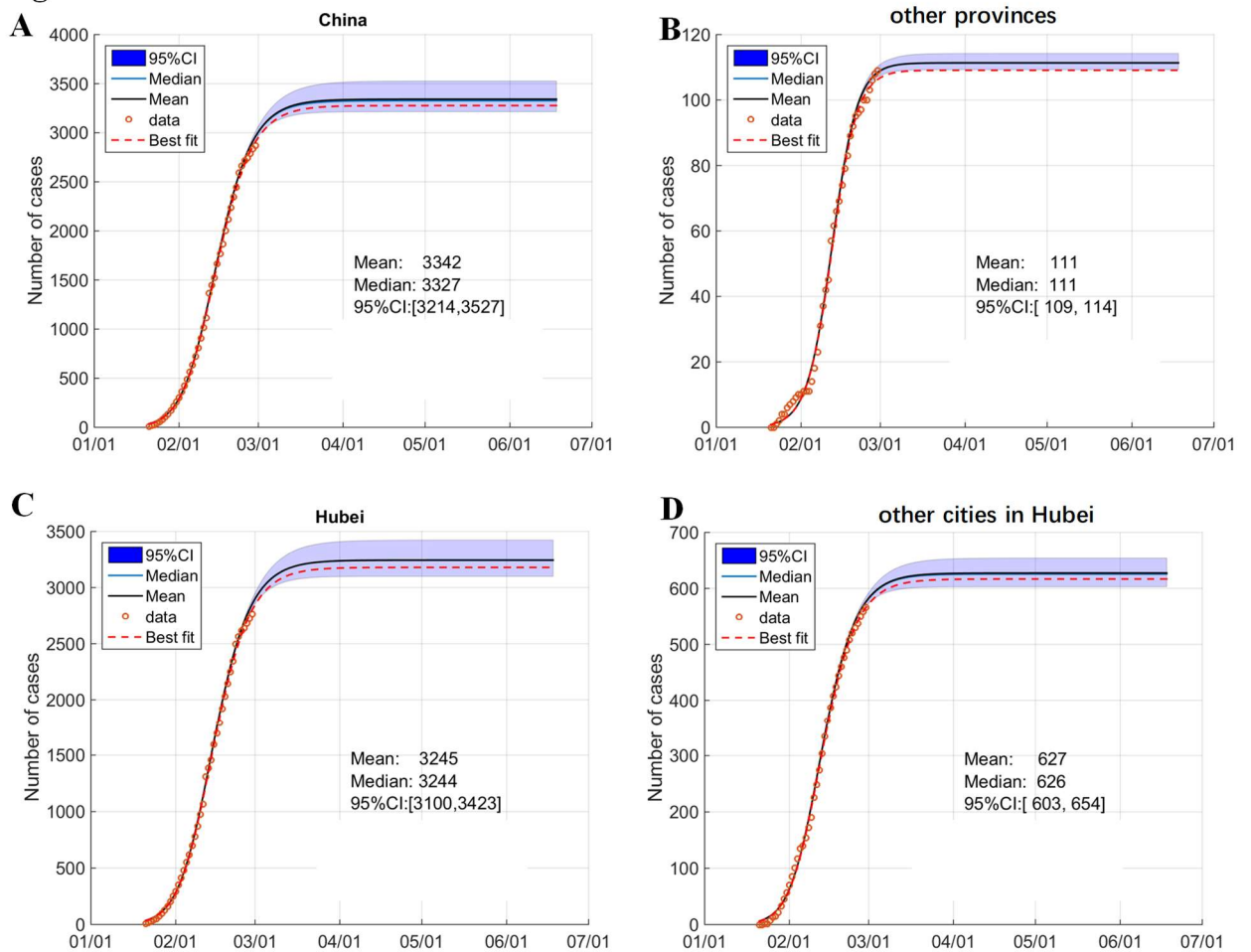


Figure S2. Analysis of the uncertainty of COVID-19 deaths for mainland China, other provinces, Hubei and other cities in Hubei using the Richards function

Data of mainland China (panel A), other provinces (panel B), Hubei Province (panel C) and other cities in Hubei (panel D) were fitted to the Richards function assuming that the relative uncertainty of the data followed a single-sided normal distribution with a mean of 1.0 and a standard deviation of 2.5%. The original data are shown as circles. The simulated results are presented as colored lines as indicated. The insets show key statistics. Results for Wuhan City is shown **Fig. 1F**.

1. Fu, X., et al., Simulating and Forecasting the Cumulative Confirmed Cases of SARS-CoV-2 in China by Boltzmann Function-based Regression Analyses. *Journal of Infection*, 2020; <https://doi.org/10.1016/j.jinf.2020.02.019>.
2. Wang, X.S., J. Wu, and Y. Yang, Richards model revisited: Validation by and application to infection dynamics. *Journal of Theoretical Biology*, 2012. 313 12–19.
3. Hsieh, Y.H., Richards Model: A Simple Procedure for Real-time Prediction of Outbreak Severity. *Modeling and Dynamics of Infectious Diseases*, 2009; p. 216-236 https://doi.org/10.1142/9789814261265_0009.