

Supplementary Material for “Trends in Transmissibility of 2019 Novel Coronavirus-infected Pneumonia in Wuhan and 29 Provinces in China”

Huazhen Lin^a, Wei Liu^a, Hong Gao^a, Jinyu Nie^a, Qiao Fan^b

^a*Center of Statistical Research and School of Statistics, Southwestern University of Finance and Economics, Chengdu, China*

^b*Centre for Quantitative Medicine, Program in Health Services & Systems Research, Duke-NUS Medical School, Singapore*

1. Figures for 28 provinces

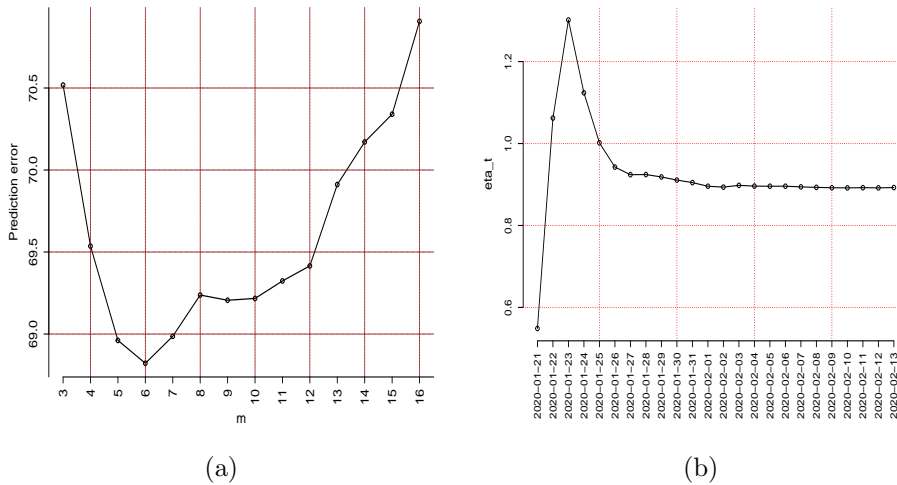


Figure 1: (a) Prediction error vs m ; (b) The pointwise estimates for $\eta(t)$ when $m = 6$.

Email address: linhz@swufe.edu.cn (Huazhen Lin)

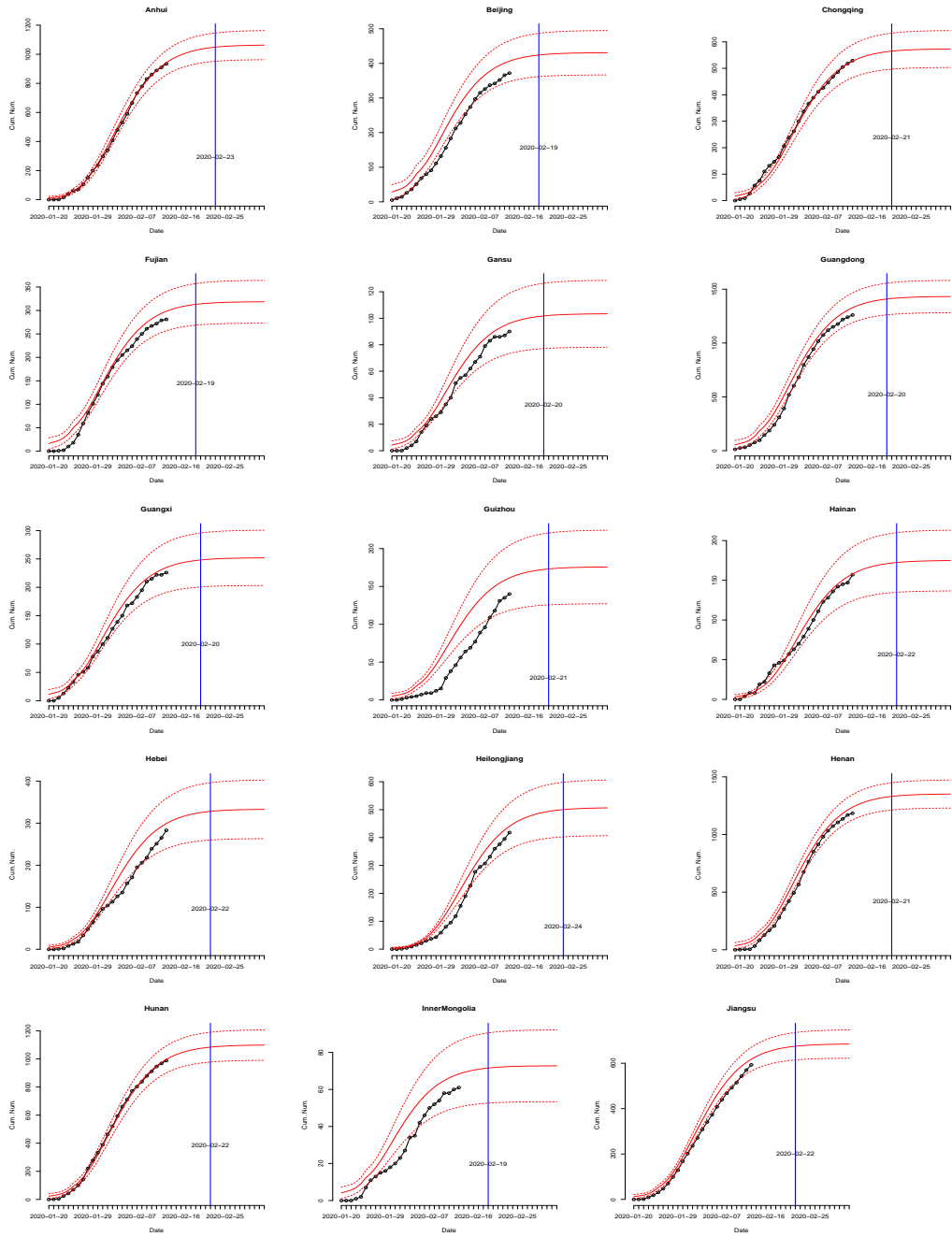


Figure 2: The estimated (red-solid) and observed (black-dotted) number of infectious over time t , as well as 95% CI (red-dashed) of the estimators.

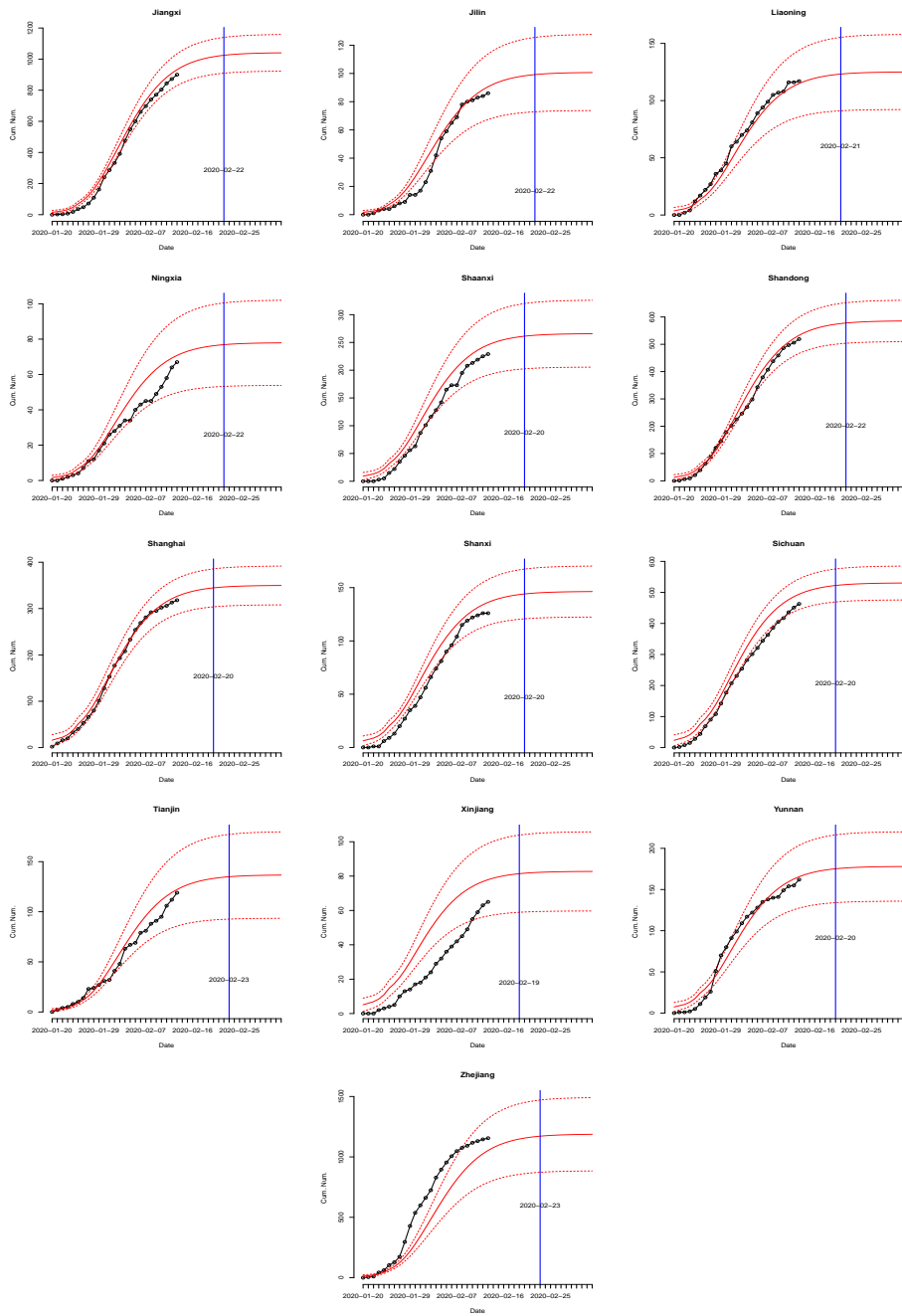


Figure 3: (a)-(j): The estimated (red-solid) and observed (black-dotted) number of infectious over time t , as well as 95% CI (red-dashed) of the estimators.

2. Figures for Hubei province

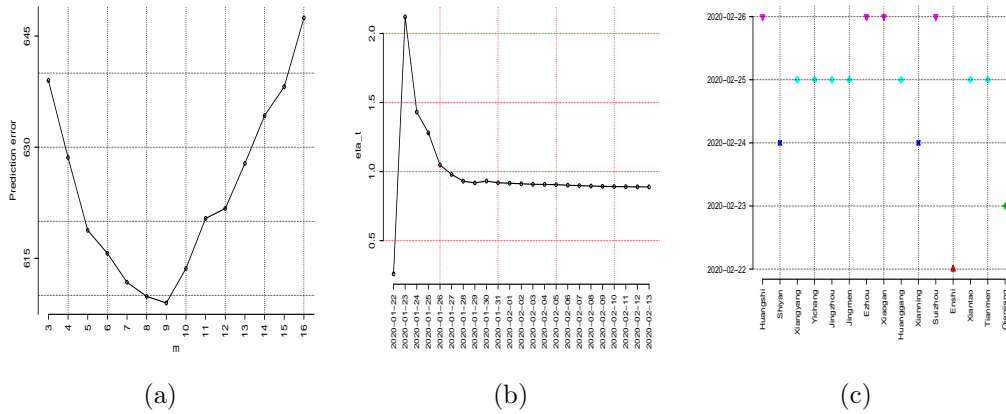


Figure 4: (a) Prediction error vs m for Hubei; (b) The pointwise estimates for $\eta(t)$ when $m = 9$ in Hubei; (c) The day reaching plateau by cities in Hubei.

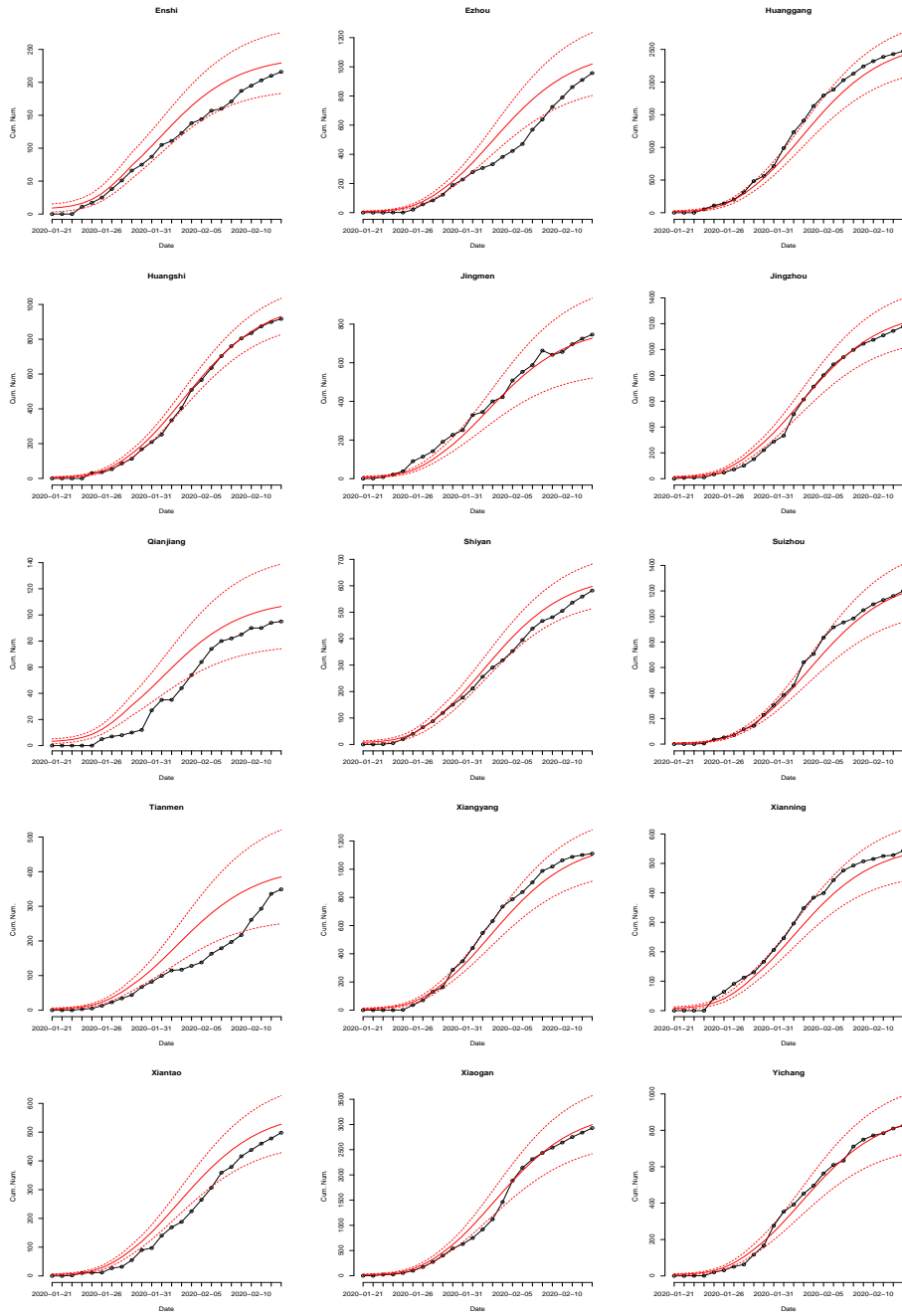
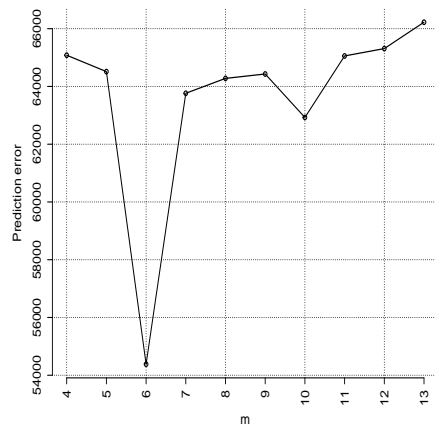
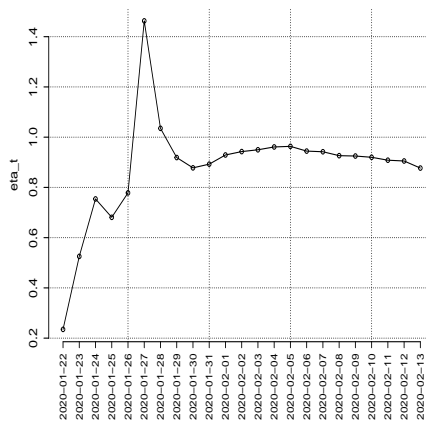


Figure 5: The estimated (red-solid) and observed (black-dotted) cumulative number of infectious over time t , as well as 95% CI (red-dashed) of the estimators for the cities in Hubei.

3. Figures for WuHan city



(a)



(b)

Figure 6: (a) Prediction error vs m for Wuhan; (b) The pointwise estimates for $\eta(t)$ when $m = 6$ in Wuhan.