

1 **SUPPLEMENTAL MATERIAL**

2 **Polygenic modulation of lipoprotein(a)-associated cardiovascular risk.**

3

4 **Brief title:** Genetic modulation of lipoprotein(a)-associated cardiovascular risk.

5

6 Mark Trinder<sup>a,b</sup>, MSc, Liam R. Brunham<sup>a,b,c,d</sup>, MD, PhD.

7

8 <sup>a</sup> Centre for Heart Lung Innovation, University of British Columbia, Vancouver, BC, Canada.

9 <sup>b</sup> Experimental Medicine Program, University of British Columbia, Vancouver, British  
10 Columbia, Canada

11 <sup>c</sup> Department of Medicine, University of British Columbia, Vancouver, British Columbia,  
12 Canada

13 <sup>d</sup> Department of Medical Genetics, University of British Columbia, Vancouver, British  
14 Columbia, Canada

15 **SUPPLEMENTAL METHODS**

16 ***Biochemical measurements.***

17           The detailed description of the serum biochemistry analyses have been described  
18 ([http://biobank.ndph.ox.ac.uk/showcase/showcase/docs/serum\\_biochemistry.pdf](http://biobank.ndph.ox.ac.uk/showcase/showcase/docs/serum_biochemistry.pdf) and  
19 [http://biobank.ndph.ox.ac.uk/showcase/showcase/docs/serum\\_hb1ac.pdf](http://biobank.ndph.ox.ac.uk/showcase/showcase/docs/serum_hb1ac.pdf)). All serum  
20 biochemistry results described were performed using the Beckman Coulter AU5800 platform  
21 (Beckman Coulter (UK), Ltd) other than hemoglobin A1c, which was performed using Bio-Rad  
22 Variant II Turbo analysers (Bio-Rad Laboratories, Inc.). The general details for each assay are  
23 displayed in Online Only Table 1. Results for serum biochemistry are reported for samples  
24 obtained at the time of study enrolment unless otherwise stated.

25 ***Definition of cardiovascular events.***

26           A detailed description of the UK Biobank’s algorithm for identifying an individual’s first  
27 myocardial infarction or stroke event have been described (myocardial infarction:  
28 [http://biobank.ndph.ox.ac.uk/showcase/showcase/docs/alg\\_outcome\\_mi.pdf](http://biobank.ndph.ox.ac.uk/showcase/showcase/docs/alg_outcome_mi.pdf); stroke:  
29 [http://biobank.ndph.ox.ac.uk/showcase/showcase/docs/alg\\_outcome\\_stroke.pdf](http://biobank.ndph.ox.ac.uk/showcase/showcase/docs/alg_outcome_stroke.pdf)).

30 **SUPPLEMENTAL TABLES**31 **Supplemental Table 1. Serum biochemistry assay details.** HDL-C: high-density lipoprotein

32 cholesterol; LDL-C: low-density lipoprotein cholesterol.

<b>Serum assay</b>	<b>Assay Manufacturer</b>	<b>Analytical Platform</b>	<b>Analysis Methodology</b>	<b>Reported Units</b>	<b>Manufacturer's Analytical Range</b>
Total cholesterol	Beckman Coulter (UK), Ltd	Beckman Coulter AU5800	Enzymatic	mmol/L	0.5 - 18
Direct LDL-C	Beckman Coulter (UK), Ltd	Beckman Coulter AU5800	Enzymatic Selective Protection	mmol/L	0.26 -10.3
Triglycerides	Beckman Coulter (UK), Ltd	Beckman Coulter AU5800	Enzymatic	mmol/L	0.1 - 11.3
HDL-C	Beckman Coulter (UK), Ltd	Beckman Coulter AU5800	Enzyme Immuno-inhibition	mmol/L	0.05 - 4.65
Lipoprotein(a)	Randox Bioscience, UK	Beckman Coulter AU5800	Immuno-turbidimetric	nmol/L	5.76 - 189
Hemoglobin A1c	Bio-Rad Laboratories, Inc.	Bio-Rad Variant II Turbo analysers	High Performance Liquid Chromatography	mmol/mol	15 - 184
C-reactive protein	Beckman Coulter (UK), Ltd	Beckman Coulter AU5800	Immuno-turbidimetric	mg/L	0.08 - 80

33

34 **Supplemental Table 2.** Phenotype codes used for determining the prevalence of peripheral  
35 vascular disease and aortic stenosis.

<b>Cardiovascular Phenotype</b>	<b>Self-Reported Non-Cancer Illnesses</b>	<b>International Classification of Diseases Codes</b>
Peripheral vascular disease	<ul style="list-style-type: none"><li>• 1067 peripheral vascular disease</li></ul>	<ul style="list-style-type: none"><li>• I73 Other peripheral vascular diseases</li></ul>
Aortic Stenosis	<ul style="list-style-type: none"><li>• 1490 aortic stenosis</li></ul>	<ul style="list-style-type: none"><li>• I35.0 Aortic (valve) stenosis</li><li>• I35.2 Aortic (valve) stenosis with insufficiency</li></ul>

36

37 **Supplemental Table 3. Enrollment characteristics and cardiovascular history of the study group stratified by quintiles of**  
38 **coronary artery disease genomic risk score percentile.** Coronary artery disease genomic risk score percentiles were calculated with  
39 the inclusion of genetic loci within and around the *LPA* gene. High-density lipoprotein cholesterol (HDL-C), interquartile range (IQR),  
40 low-density lipoprotein cholesterol (LDL-C) standard deviation (SD).

Characteristic	Measurement	Quintiles of Coronary Artery Disease Genomic Risk Score Percentile					p
		≤20	20-40	40-60	60-80	80-100	
n	no.	81778	81779	81779	81779	81781	n/a
Age	mean (SD)	56.9 (8.0)	56.9 (8.0)	56.9 (8.0)	57.0 (8.0)	56.9 (8.0)	0.12
Female sex	no. (%)	44285 (54.2)	44109 (53.9)	44113 (53.9)	44330 (54.2)	44245 (54.1)	0.74
Hypertension	no. (%) / n	19479 (23.9) / 81654	21165 (25.9) / 81650	22242 (27.2) / 81652	23224 (28.4) / 81655	24778 (30.3) / 81645	<0.0001
Severe hypercholesterolemia	no. (%) / n	4740 (6.1) / 77849	5768 (7.4) / 77872	6427 (8.3) / 77799	6978 (9.0) / 77844	8065 (10.4) / 77794	<0.0001
Diabetes mellitus	no. (%) / n	3524 (4.3) / 81610	3662 (4.5) / 81580	3885 (4.8) / 81590	4211 (5.2) / 81613	4491 (5.5) / 81610	<0.0001
Obesity	no. (%) / n	18564 (22.8) / 81540	18987 (23.3) / 81520	20044 (24.6) / 81532	20218 (24.8) / 81512	21066 (25.8) / 81496	<0.0001
Current smoker	no. (%) / n	8088 (9.9) / 81523	8110 (10.0) / 81505	8359 (10.3) / 81480	8323 (10.2) / 81486	8440 (10.4) / 81467	0.009
Total cholesterol (mmol/L)	median (IQR) / n	5.67 (1.47) / 77989	5.76 (1.51) / 78020	5.81 (1.54) / 77941	5.85 (1.57) / 77982	5.93 (1.63) / 77943	<0.0001
LDL-C (mmol/L)	median (IQR) / n	3.50 (1.11) / 77849	3.58 (1.14) / 77872	3.62 (1.16) / 77799	3.66 (1.17) / 77844	3.72 (1.21) / 77794	<0.0001
Triglycerides (mmol/L)	median (IQR) / n	1.46 (1.08) / 77940	1.49 (1.10) / 77954	1.50 (1.11) / 77873	1.51 (1.11) / 77916	1.52 (1.13) / 77884	<0.0001
HDL-C (mmol/L)	median (IQR) / n	1.42 (0.51) / 71302	1.41 (0.50) / 71454	1.40 (0.50) / 71355	1.40 (0.50) / 71307	1.38 (0.50) / 71422	<0.0001
Lipoprotein(a) (nmol/L)	median (IQR) / n	16.2 (32.4) / 63900	17.87 (38.3) / 63514	19.2 (45.2) / 63344	22.2 (62.1) / 62058	34.1 (101.0) / 57204	<0.0001
HbA1c (mmol/mol)	median (IQR) / n	35.1 (4.8) / 77928	35.1 (4.9) / 77880	35.2 (5.0) / 77919	35.2 (5.1) / 77966	35.3 (5.1) / 78078	<0.0001
C-reactive protein (mg/L)	median (IQR) / n	1.30 (2.05) / 77848	1.32 (2.06) / 77843	1.34 (2.09) / 77767	1.35 (2.13) / 77819	1.36 (2.16) / 77759	<0.0001

42 **Supplemental Table 4. Enrollment characteristics and cardiovascular history of the study group stratified by quintiles of**  
43 **coronary artery disease genomic risk score percentile.** Coronary artery disease genomic risk score percentiles were calculated after  
44 excluding genetic loci within and around the *LPA* gene. High-density lipoprotein cholesterol (HDL-C), interquartile range (IQR), low-  
45 density lipoprotein cholesterol (LDL-C) standard deviation (SD).

Characteristic	Measurement	Quintiles of Coronary Artery Disease Genomic Risk Score Percentile (without <i>LPA</i> )					p
		≤20	20-40	40-60	60-80	80-100	
n	no.	81777	81780	81779	81779	81781	n/a
Age	mean (SD)	56.9 (8.0)	56.9 (8.0)	56.9 (8.0)	56.9 (8.0)	56.9 (8.0)	0.5
Female sex	no. (%)	44237 (54.1)	44237 (54.1)	44151 (54.0)	44286 (54.2)	44171 (54.0)	0.96
Hypertension	no. (%) / n	19531 (23.9) / 81655	21088 (25.8) / 81644	22119 (27.1) / 81652	23394 (28.6) / 81655	24756 (30.3) / 81650	<0.0001
Severe hypercholesterolemia	no. (%) / n	4841 (6.2) / 77814	5913 (7.6) / 77847	6384 (8.2) / 77826	7003 (9.0) / 77849	7837 (10.1) / 77822	<0.0001
Diabetes mellitus	no. (%) / n	3564 (4.4) / 81608	3662 (4.5) / 81584	3864 (4.7) / 81605	4192 (5.1) / 81592	4491 (5.5) / 81614	<0.0001
Obesity	no. (%) / n	18571 (22.8) / 81539	19079 (23.4) / 81536	19826 (24.3) / 81515	20197 (24.8) / 81506	21206 (26.0) / 81504	<0.0001
Current smoker	no. (%) / n	8062 (9.9) / 81525	8174 (10.0) / 81496	8308 (10.2) / 81491	8381 (10.3) / 81488	8395 (10.3) / 81461	0.02
Total cholesterol (mmol/L)	median (IQR) / n	5.68 (1.48) / 77964	5.77 (1.52) / 77988	5.81 (1.54) / 77974	5.86 (1.58) / 77977	5.90 (1.61) / 77972	<0.0001
LDL-C (mmol/L)	median (IQR) / n	3.51 (1.11) / 77814	3.59 (1.14) / 77847	3.62 (1.16) / 77826	3.66 (1.18) / 77849	3.70 (1.20) / 77822	<0.0001
Triglycerides (mmol/L)	median (IQR) / n	1.45 (1.08) / 77914	1.48 (1.10) / 77916	1.50 (1.11) / 77912	1.52 (1.11) / 77908	1.54 (1.13) / 77917	<0.0001
HDL-C (mmol/L)	median (IQR) / n	1.42 (0.51) / 71306	1.41 (0.50) / 71428	1.40 (0.50) / 71294	1.40 (0.50) / 71372	1.38 (0.49) / 71440	<0.0001
Lipoprotein(a) (nmol/L)	median (IQR) / n	19.8 (51.68) / 62054	20.1 (51.1) / 62039	20.1 (50.6) / 62133	20.2 (50.7) / 62101	20.4 (50.2) / 61693	0.26
HbA1c (mmol/mol)	median (IQR) / n	35.1 (4.9) / 77887	35.1 (4.9) / 77934	35.1 (5.0) / 77913	35.2 (5.2) / 78002	35.3 (5.2) / 78035	<0.0001
C-reactive protein (mg/L)	median (IQR) / n	1.30 (2.05) / 77818	1.32 (2.06) / 77838	1.33 (2.09) / 77777	1.35 (2.12) / 77801	1.36 (2.16) / 77802	<0.0001

47 **Supplemental Table 5. Prevalence of myocardial infarction versus deciles of coronary artery disease genomic risk score for**  
 48 **individuals with and without elevated lipoprotein(a).** Coronary artery disease genomic risk score percentiles were calculated with  
 49 the inclusion and exclusion of genetic loci within and around the *LPA* gene.

Lipoprotein(a) Strata	Genomic Risk Score	Deciles of Coronary Artery Disease Genomic Risk Score Percentile (events / n [%])									
		≤10	10-20	20-30	30-40	40-50	50-60	60-70	70-80	80-90	90-100
Non-elevated (< 120 nmol/L)	with <i>LPA</i>	663 / 30118 [2.20]	744 / 29598 [2.51]	832 / 29208 [2.85]	945 / 28694 [3.29]	969 / 28441 [3.41]	1111 / 28007 [3.97]	1115 / 27158 [4.11]	1238 / 26080 [4.75]	1329 / 24566 [5.41]	1372 / 19882 [6.90]
Elevated (≥ 120 nmol/L)	with <i>LPA</i>	55 / 1836 [3]	73 / 2348 [3.11]	90 / 2597 [3.47]	114 / 3015 [3.78]	150 / 3186 [4.71]	186 / 3710 [5.01]	207 / 4119 [5.03]	244 / 4701 [5.19]	345 / 5530 [6.24]	558 / 7226 [7.72]
Overall	with <i>LPA</i>	933 / 40890 [2.28]	1065 / 40888 [2.60]	1208 / 40888 [2.95]	1398 / 40891 [3.42]	1486 / 40890 [3.63]	1708 / 40889 [4.18]	1798 / 40889 [4.40]	2016 / 40890 [4.93]	2344 / 40890 [5.73]	3085 / 40891 [7.54]
Non-elevated (< 120 nmol/L)	without <i>LPA</i>	575 / 27230 [2.11]	710 / 27185 [2.61]	742 / 27166 [2.73]	844 / 27097 [3.11]	892 / 27208 [3.28]	1032 / 27302 [3.78]	1132 / 27249 [4.15]	1224 / 27177 [4.50]	1381 / 27132 [5.09]	1786 / 27006 [6.61]
Elevated (≥ 120 nmol/L)	without <i>LPA</i>	112 / 3759 [2.98]	132 / 3880 [3.40]	157 / 3846 [4.08]	178 / 3930 [4.53]	181 / 3845 [4.71]	196 / 3778 [5.19]	227 / 3810 [5.96]	247 / 3865 [6.39]	259 / 3810 [6.80]	333 / 3745 [8.89]
Overall	without <i>LPA</i>	953 / 40890 [2.33]	1165 / 40887 [2.85]	1249 / 40889 [3.05]	1418 / 40891 [3.47]	1506 / 40889 [3.68]	1687 / 40890 [4.13]	1851 / 40890 [4.53]	2020 / 40889 [4.94]	2257 / 40890 [5.52]	2935 / 40891 [7.18]

50

51 **Supplemental Table 6. Prevalence of peripheral vascular disease versus deciles of coronary artery disease genomic risk score**  
52 **for individuals with and without elevated lipoprotein(a).** Coronary artery disease genomic risk score percentiles were calculated  
53 with the inclusion and exclusion of genetic loci within and around the *LPA* gene.

Lipoprotein(a) Strata	Genomic Risk Score	Deciles of Coronary Artery Disease Genomic Risk Score Percentile (events / n [%])									
		≤10	10-20	20-30	30-40	40-50	50-60	60-70	70-80	80-90	90-100
Non-elevated (< 120 nmol/L)	with <i>LPA</i>	299 / 30118 [0.99]	323 / 29598 [1.09]	327 / 29208 [1.12]	316 / 28694 [1.1]	307 / 28441 [1.08]	332 / 28007 [1.19]	333 / 27158 [1.23]	301 / 26080 [1.15]	307 / 24566 [1.25]	316 / 19882 [1.59]
Elevated (≥ 120 nmol/L)	with <i>LPA</i>	17 / 1836 [0.93]	31 / 2348 [1.32]	33 / 2597 [1.27]	39 / 3015 [1.29]	41 / 3186 [1.29]	46 / 3710 [1.24]	61 / 4119 [1.48]	69 / 4701 [1.47]	101 / 5530 [1.83]	121 / 7226 [1.67]
Overall	with <i>LPA</i>	415 / 40890 [1.01]	456 / 40888 [1.12]	486 / 40888 [1.19]	450 / 40891 [1.1]	487 / 40890 [1.19]	510 / 40889 [1.25]	532 / 40889 [1.30]	534 / 40890 [1.31]	590 / 40890 [1.44]	720 / 40891 [1.76]
Non-elevated (< 120 nmol/L)	without <i>LPA</i>	280 / 27230 [1.03]	284 / 27185 [1.04]	294 / 27166 [1.08]	299 / 27097 [1.1]	301 / 27208 [1.11]	304 / 27302 [1.11]	342 / 27249 [1.26]	361 / 27177 [1.33]	296 / 27132 [1.09]	400 / 27006 [1.48]
Elevated (≥ 120 nmol/L)	without <i>LPA</i>	45 / 3759 [1.20]	45 / 3880 [1.16]	45 / 3846 [1.17]	59 / 3930 [1.50]	44 / 3845 [1.14]	59 / 3778 [1.56]	59 / 3810 [1.55]	55 / 3865 [1.42]	75 / 3810 [1.97]	73 / 3745 [1.95]
Overall	without <i>LPA</i>	445 / 40890 [1.09]	458 / 40887 [1.12]	479 / 40889 [1.17]	501 / 40891 [1.23]	468 / 40889 [1.14]	503 / 40890 [1.23]	550 / 40890 [1.35]	575 / 40889 [1.41]	542 / 40890 [1.33]	659 / 40891 [1.61]

54



55 **Supplemental Table 7. Prevalence of aortic stenosis versus deciles of coronary artery disease genomic risk score for individuals**  
56 **with and without elevated lipoprotein(a).** Coronary artery disease genomic risk score percentiles were calculated with the inclusion  
57 and exclusion of genetic loci within and around the *LPA* gene.

Lipoprotein(a) Strata	Genomic Risk Score	Deciles of Coronary Artery Disease Genomic Risk Score Percentile (events / n [%])									
		≤10	20-30	20-30	30-40	40-50	50-60	60-70	70-80	80-90	90-100
Non-elevated ( $< 120$ nmol/L)	with <i>LPA</i>	116 / 30118 [0.39]	144 / 29598 [0.49]	159 / 29208 [0.54]	154 / 28694 [0.54]	141 / 28441 [0.5]	140 / 28007 [0.5]	165 / 27158 [0.61]	158 / 26080 [0.61]	139 / 24566 [0.57]	137 / 19882 [0.69]
Elevated ( $\geq 120$ nmol/L)	with <i>LPA</i>	9 / 1836 [0.49]	18 / 2348 [0.77]	14 / 2597 [0.54]	21 / 3015 [0.70]	23 / 3186 [0.72]	25 / 3710 [0.67]	40 / 4119 [0.97]	56 / 4701 [1.19]	56 / 5530 [1.01]	55 / 7226 [0.76]
Overall	with <i>LPA</i>	166 / 40890 [0.41]	218 / 40888 [0.53]	217 / 40888 [0.53]	229 / 40891 [0.56]	227 / 40890 [0.56]	245 / 40889 [0.60]	268 / 40889 [0.66]	308 / 40890 [0.75]	289 / 40890 [0.71]	339 / 40891 [0.83]
Non-elevated ( $< 120$ nmol/L)	without <i>LPA</i>	112 / 27230 [0.41]	138 / 27185 [0.51]	127 / 27166 [0.47]	160 / 27097 [0.59]	135 / 27208 [0.5]	132 / 27302 [0.48]	150 / 27249 [0.55]	169 / 27177 [0.62]	165 / 27132 [0.61]	165 / 27006 [0.61]
Elevated ( $\geq 120$ nmol/L)	without <i>LPA</i>	25 / 3759 [0.67]	27 / 3880 [0.70]	26 / 3846 [0.68]	36 / 3930 [0.92]	34 / 3845 [0.88]	38 / 3778 [1.01]	31 / 3810 [0.81]	44 / 3865 [1.14]	29 / 3810 [0.76]	27 / 3745 [0.72]
Overall	without <i>LPA</i>	191 / 40890 [0.47]	230 / 40887 [0.56]	224 / 40889 [0.55]	276 / 40891 [0.67]	227 / 40889 [0.56]	239 / 40890 [0.58]	273 / 40890 [0.67]	283 / 40889 [0.69]	278 / 40890 [0.68]	285 / 40891 [0.70]

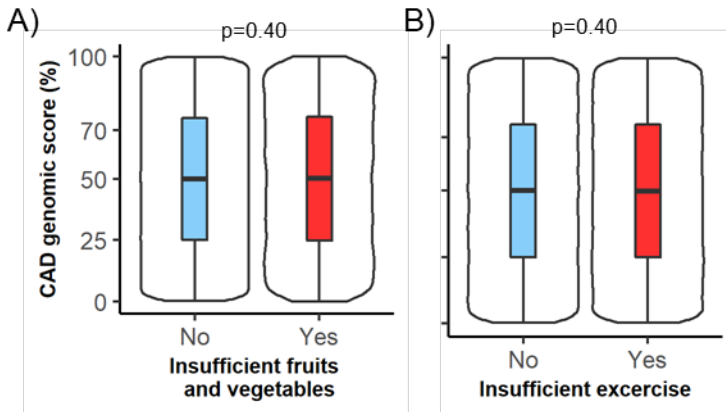
58

59 **Supplemental Table 8. Prevalence of ischemic stroke versus deciles of coronary artery disease genomic risk score for**  
60 **individuals with and without elevated lipoprotein(a).** Coronary artery disease genomic risk score percentiles were calculated with  
61 the inclusion and exclusion of genetic loci within and around the *LPA* gene.

Lipoprotein(a) Strata	Genomic Risk Score	Deciles of Coronary Artery Disease Genomic Risk Score Percentile (events / n [%])									
		≤10	20-30	20-30	30-40	40-50	50-60	60-70	70-80	80-90	90-100
Non-elevated (< 120 nmol/L)	with <i>LPA</i>	319 / 30118 [1.06]	298 / 29598 [1.01]	324 / 29208 [1.11]	305 / 28694 [1.06]	343 / 28441 [1.21]	356 / 28007 [1.27]	342 / 27158 [1.26]	295 / 26080 [1.13]	299 / 24566 [1.22]	302 / 19882 [1.52]
Elevated (≥ 120 nmol/L)	with <i>LPA</i>	26 / 1836 [1.42]	21 / 2348 [0.89]	31 / 2597 [1.19]	50 / 3015 [1.66]	40 / 3186 [1.26]	55 / 3710 [1.48]	62 / 4119 [1.51]	72 / 4701 [1.53]	78 / 5530 [1.41]	95 / 7226 [1.31]
Overall	with <i>LPA</i>	431 / 40890 [1.05]	439 / 40888 [1.07]	475 / 40888 [1.16]	471 / 40891 [1.15]	493 / 40890 [1.21]	539 / 40889 [1.32]	534 / 40889 [1.31]	501 / 40890 [1.23]	524 / 40890 [1.28]	640 / 40891 [1.57]
Non-elevated (< 120 nmol/L)	without <i>LPA</i>	290 / 27230 [1.07]	294 / 27185 [1.08]	267 / 27166 [0.98]	292 / 27097 [1.08]	308 / 27208 [1.13]	339 / 27302 [1.24]	333 / 27249 [1.22]	346 / 27177 [1.27]	336 / 27132 [1.24]	378 / 27006 [1.4]
Elevated (≥ 120 nmol/L)	without <i>LPA</i>	45 / 3759 [1.20]	55 / 3880 [1.42]	50 / 3846 [1.30]	57 / 3930 [1.45]	61 / 3845 [1.59]	48 / 3778 [1.27]	49 / 3810 [1.29]	62 / 3865 [1.6]	62 / 3810 [1.63]	41 / 3745 [1.09]
Overall	without <i>LPA</i>	427 / 40890 [1.04]	486 / 40887 [1.19]	463 / 40889 [1.13]	475 / 40891 [1.16]	493 / 40889 [1.21]	515 / 40890 [1.26]	529 / 40890 [1.29]	546 / 40889 [1.34]	536 / 40890 [1.31]	577 / 40891 [1.41]

62

63 **SUPPLEMENTAL FIGURES**



64

65 **Supplemental Figure 1. Genomic scores for coronary artery disease do not associate with**

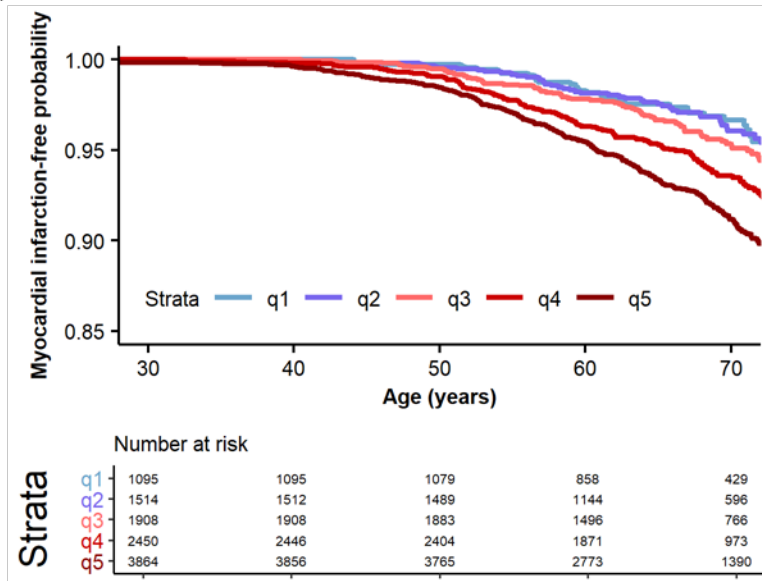
66 **fruit and vegetable intake and exercise.** The distribution of coronary artery disease genomic

67 score percentiles are displayed for (A) insufficient intake of fruits and vegetables and (B)

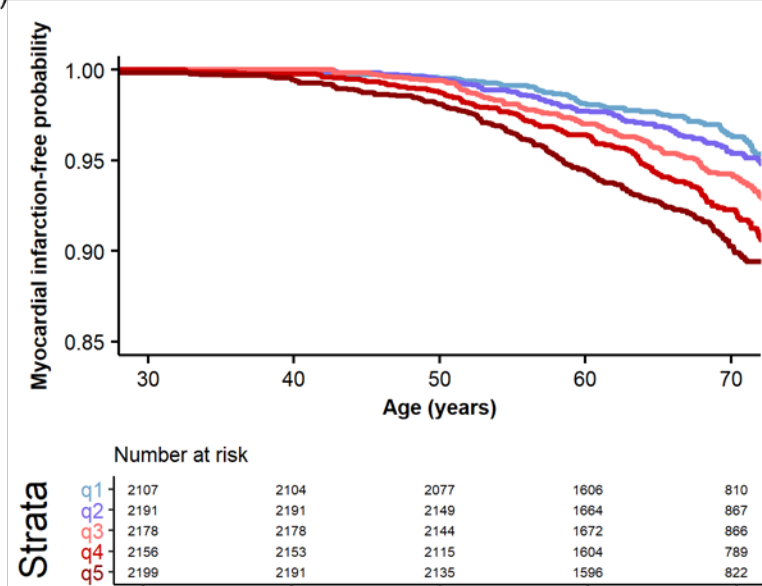
68 insufficient exercise assessed at study enrollment. Boxplots display the median and interquartile

69 range. The boxplot's whiskers show the range and the accompanying density distribution.

A)

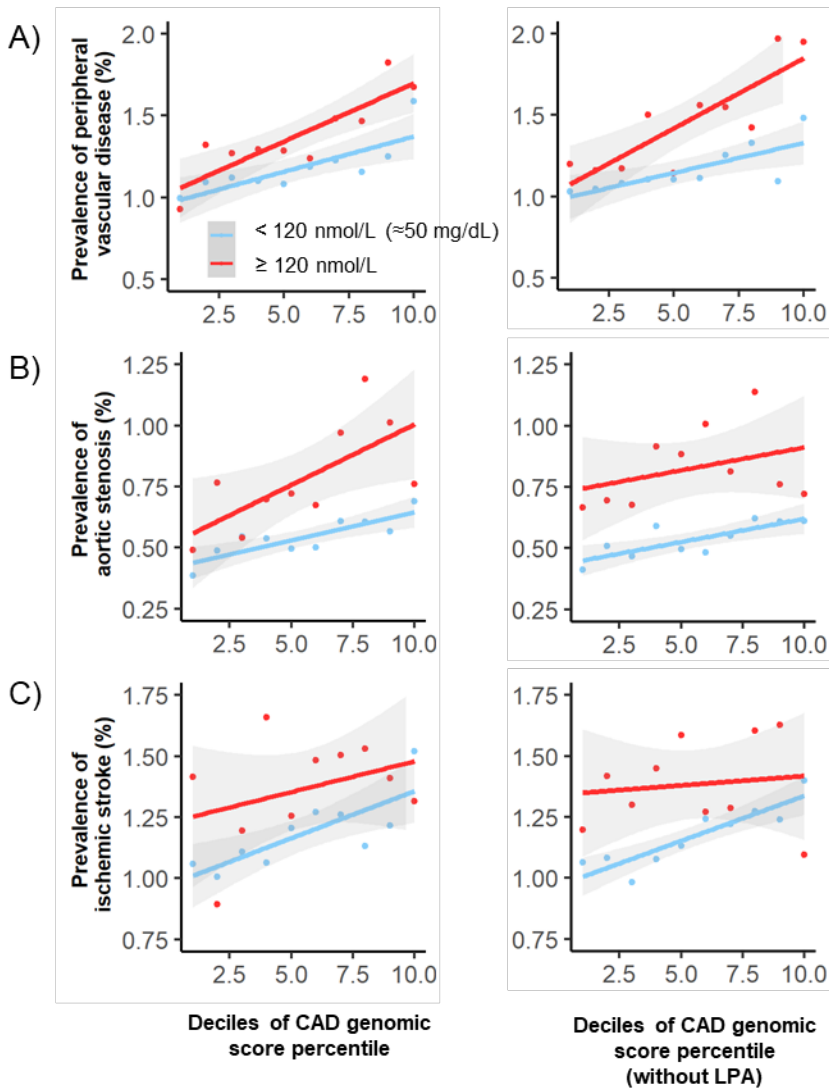


B)



70

71 **Supplemental Figure 2. Coronary artery disease genomic risk scores are a modifier of risk**  
 72 **of myocardial infarction for individuals with extremely elevated lipoprotein(a).** Time-to-  
 73 first-event analyses are displayed for risk of myocardial infarction events stratified by quintiles  
 74 of coronary artery disease genomic risk score percentile among individuals with extremely  
 75 elevated lipoprotein(a) ( $\geq 168$  nmol/L,  $\approx 70$  mg/dL) calculated (A) with and (B) without genetic  
 76 variants in proximity to the *LPA* gene.



77

78 **Supplemental Figure 3.** The prevalence of (A) peripheral vascular disease, (B) aortic stenosis,  
 79 and (C) ischemic stroke is displayed for each decile of coronary artery disease genomic risk  
 80 score percentile calculated with and without genetic variants in proximity to the *LPA* gene. Solid  
 81 lines depict linear regression analyses and gray shading indicate the associated 95% confidence  
 82 interval stratified by non-elevated versus elevated lipoprotein(a) levels.